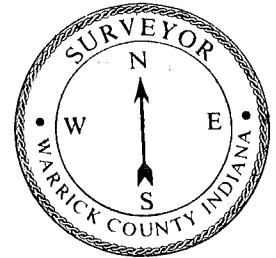


CORNER RECORD
WARRICK COUNTY



DESCRIPTION:

NW CORNER NE 1/4

SECTION 1, T. 7 S. R. 9 W.

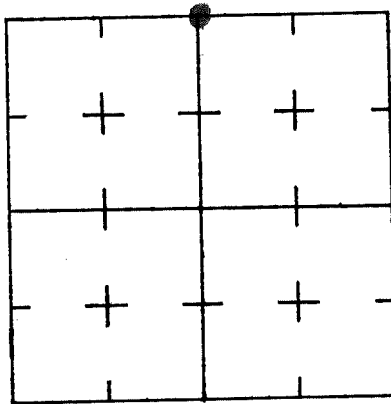
2nd PRINCIPLE MERIDIAN

CYPRESS ACRE - 2 - SECTION "A"

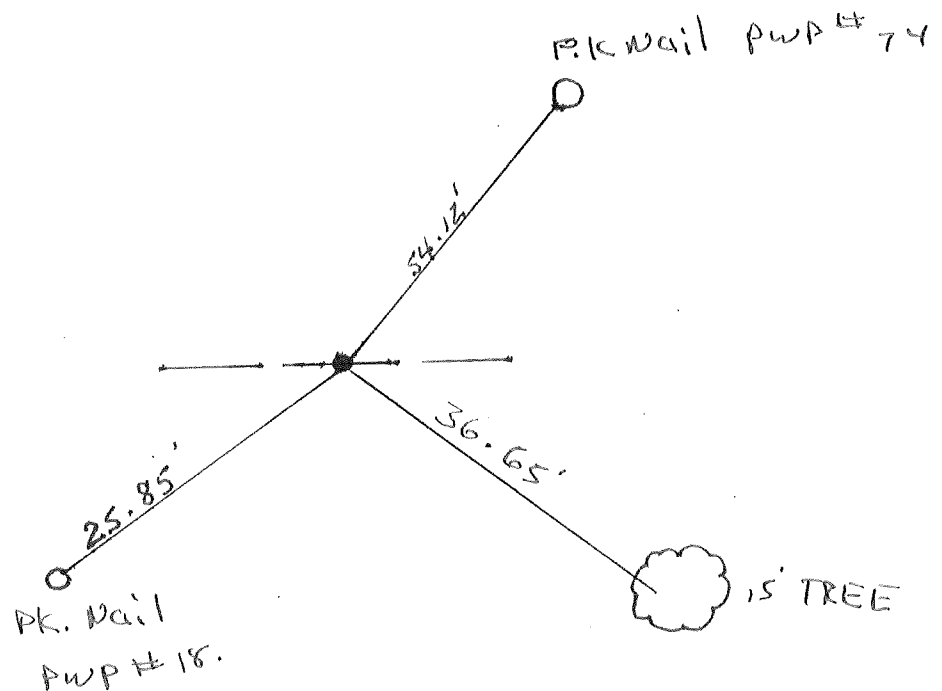
WARRICK COUNTY SURVEYOR

MICHAEL IRVIN

INDICATE CORNER REFERENCED



DESCRIBE CORNER REFERENCED



STATE PLANE COORDINATE DATA

INDIANA ZONE: WEST

X _____

Y _____

ESTABLISHED BY:

APPROVED BY

DATE

REFERENCED BY:

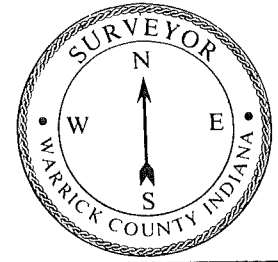
Elmo D Dockery

DATE

Nov 10, 1976.



CORNER RECORD
WARRICK COUNTY



DESCRIPTION:

SW CORNER NE 1/4

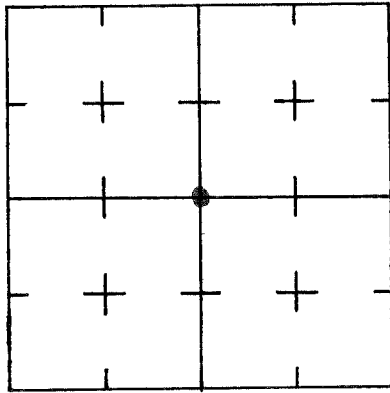
SECTION 1, T. 7 S. R. 9 W.

2nd PRINCIPLE MERIDIAN

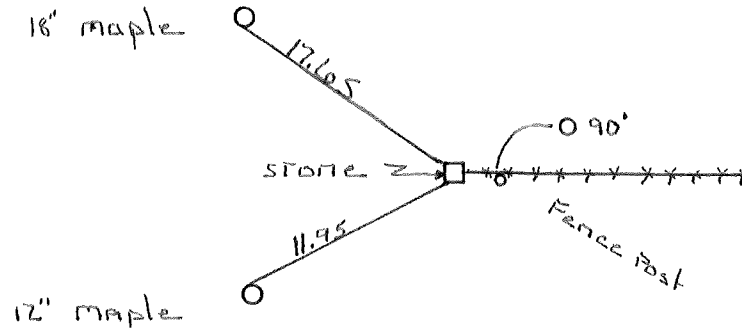
CYPRESS ACRES NO. 3 SEC. "A"

WARRICK COUNTY SURVEYOR
MICHAEL IRVIN

INDICATE CORNER REFERENCED



DESCRIBE CORNER REFERENCED



STATE PLANE COORDINATE DATA

INDIANA ZONE: WEST

X _____

Y _____

ESTABLISHED BY:

APPROVED BY

DATE

REFERENCED BY:

EDWIN O. BOYD

DATE

MARCH 6th 1979

1. The first part of the document discusses the importance of maintaining accurate records of all transactions and activities. It emphasizes that this is essential for ensuring transparency and accountability in the organization's operations.

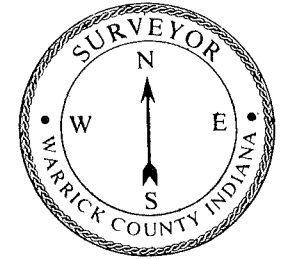
2. The second part of the document outlines the various methods and tools used to collect and analyze data. It highlights the need for consistent data collection procedures and the use of advanced analytical techniques to derive meaningful insights from the data.

3. The third part of the document focuses on the role of technology in data management and analysis. It discusses how modern software solutions can streamline data collection, storage, and processing, thereby improving efficiency and accuracy.

4. The fourth part of the document addresses the challenges associated with data management, such as data quality, security, and privacy. It provides strategies to mitigate these risks and ensure that the data remains reliable and secure throughout its lifecycle.

5. The fifth part of the document concludes by summarizing the key findings and recommendations. It stresses the importance of a data-driven approach in decision-making and the need for continuous monitoring and improvement of data management practices.

**CORNER RECORD
WARRICK COUNTY**



DESCRIPTION:

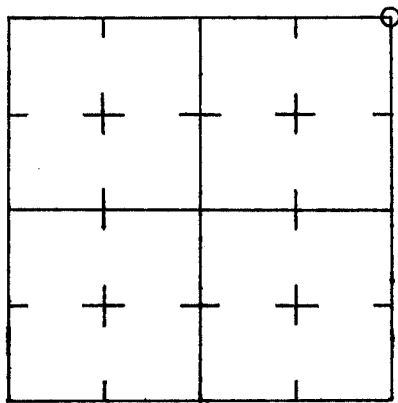
NE CORNER NE 1/4 NE 1/4

SECTION 2, T. 7 S. R. 9 W.

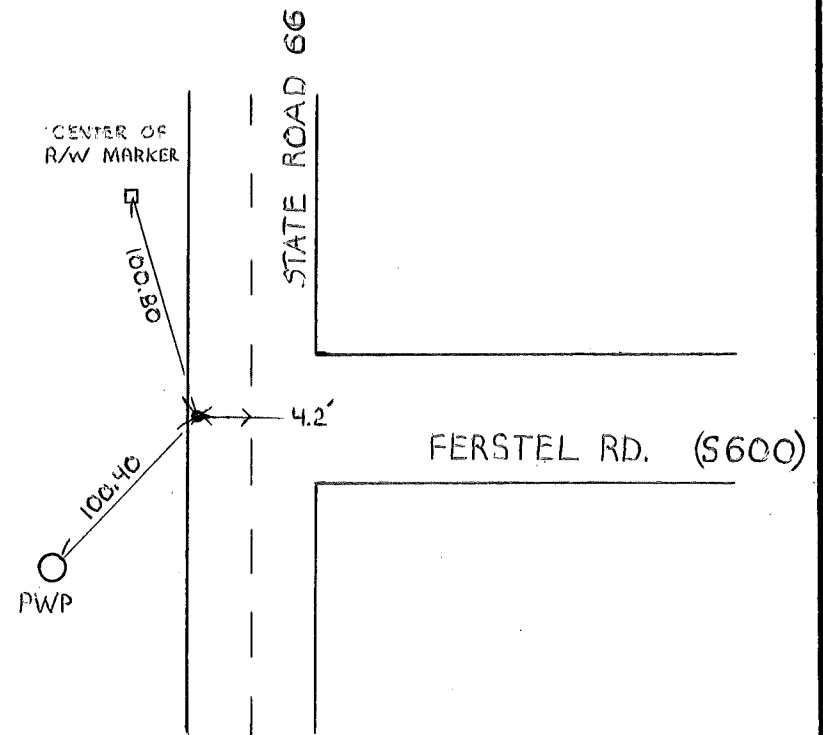
2nd PRINCIPLE MERIDIAN

**WARRICK COUNTY SURVEYOR
MICHAEL IRVIN**

INDICATE CORNER REFERENCED



DESCRIBE CORNER REFERENCED



STATE PLANE COORDINATE DATA

INDIANA ZONE: WEST

X _____

Y _____

ESTABLISHED BY:

APPROVED BY

DATE
3-19-73

REFERENCED BY: GEORGE T. WANDEL

DATE

000005

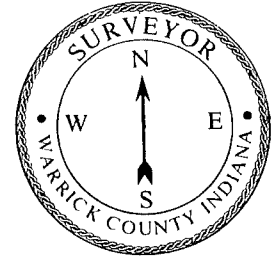
NE CORNER SECT - 2 - 7 - 9
NW CORNER SECT - 1 - 7 - 9

Type of Monument - BRASS PLUG

DATE 3-19-73

REFERENCED BY - GEORGE T. WANDEL

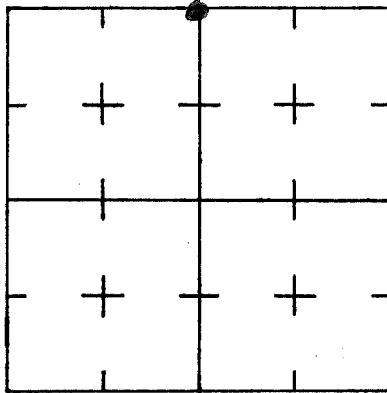
CORNER RECORD
WARRICK COUNTY



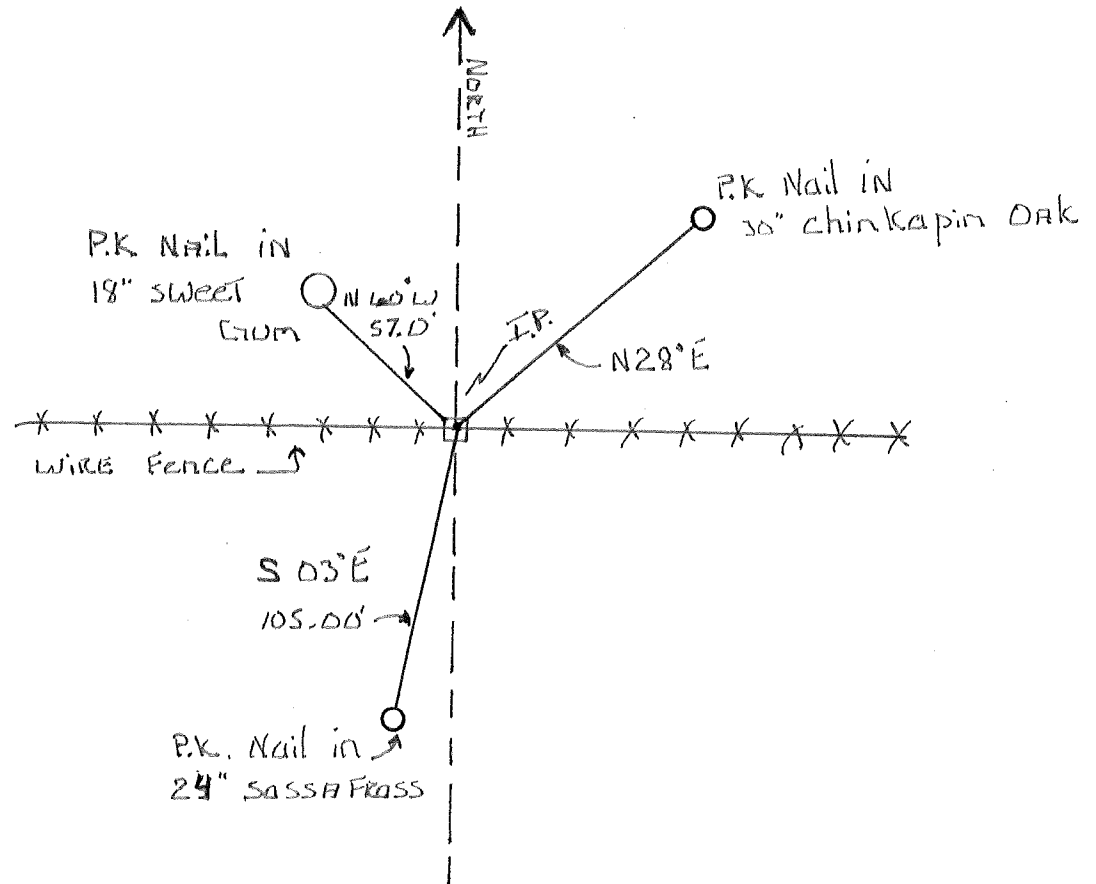
DESCRIPTION: ~~NW 1/4 NE 1/4~~
NW CORNER ~~NW 1/4 NE 1/4~~
SECTION 2, T. 7 S. R. 9 W.
2nd PRINCIPLE MERIDIAN
Lake Vale Estates

WARRICK COUNTY SURVEYOR
MICHAEL IRVIN

INDICATE CORNER REFERENCED



DESCRIBE CORNER REFERENCED



STATE PLANE COORDINATE DATA

INDIANA ZONE: WEST

X _____

Y _____

ESTABLISHED BY:

APPROVED BY

DATE

REFERENCED BY:

DATE

Andy Easley

Oct 10, 1984

130

131

132

133

134

135

136

137

138

139

140

141

142

143

144

145

146

147

148

149

150

151

152

153

154

155

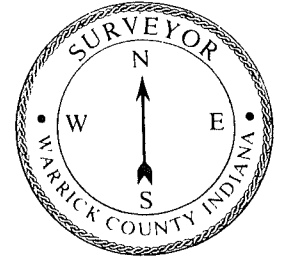
156

157

158

159

CORNER RECORD
WARRICK COUNTY



DESCRIPTION:

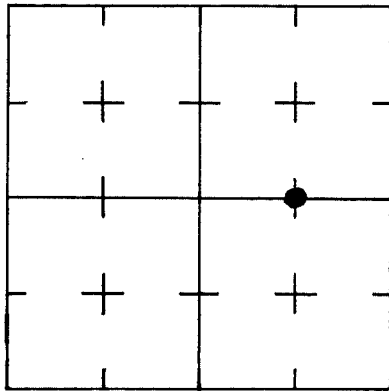
NW CORNER NE 1/4 SE 1/4

SECTION 2, T. 7 S. R. 9 W.

2nd PRINCIPLE MERIDIAN

WARRICK COUNTY SURVEYOR
KARAN HARGRAVE-BARNHILL

INDICATE CORNER REFERENCED



DESCRIBE CORNER REFERENCED

OLD STONEHOUSE ESTATES

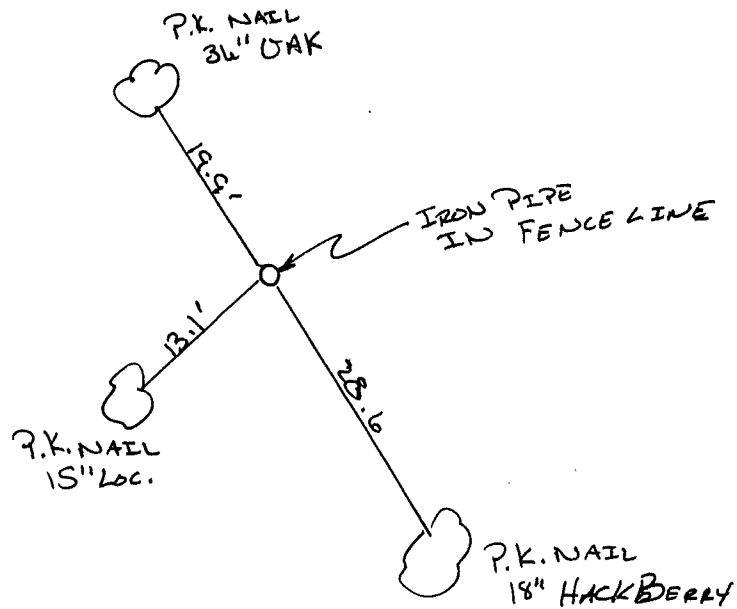
STATE PLANE COORDINATE DATA

INDIANA ZONE: WEST

X _____

Y _____

ESTABLISHED BY:



APPROVED BY

DATE

REFERENCED BY:

DATE

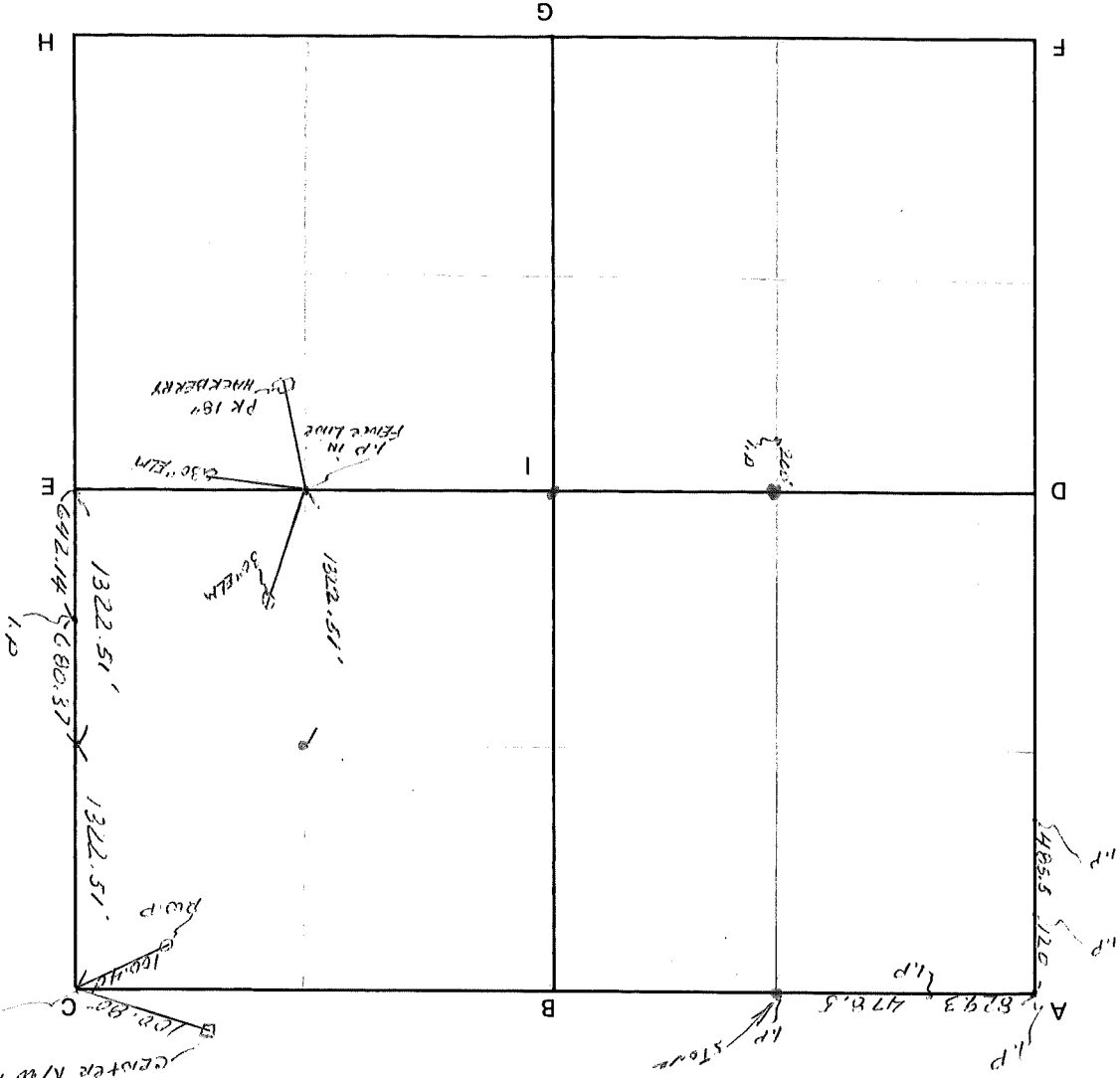
GEORGE T. WANDEL

10-20-80

CORNER CODE SYSTEM
Warrick County

Center R/W Market
 BRASS plug House Est.
 (Old stone House Est.)

NOTES



RECORD OF SECTION CORNERS

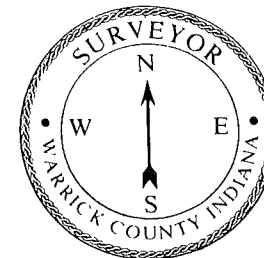
7 Warrick County 9

2

Section _____ Township _____ Range _____ 2nd Principle Meridian _____

Date	Cor	Location	Description of		Distance from Corner	Bearing from Corner (North Assumed)	Cond	Check By	Remarks
			Monument	Reference					
/12/73		1. I.P. in fence line	1pk nail	Hackberry	13 th ?	none	unknown	George Mandel	nw cor. ne1/4 se1/4
		2. pk nail 30" elm 3. pk nail 30" Elm			? ?	none none	unknown unknown		
/12/73		1. pwp 2. center r/w marker			100.4 100.8			George Mandel ne cor. ne1/4 ne1/4	

CORNER RECORD
WARRICK COUNTY



DESCRIPTION:

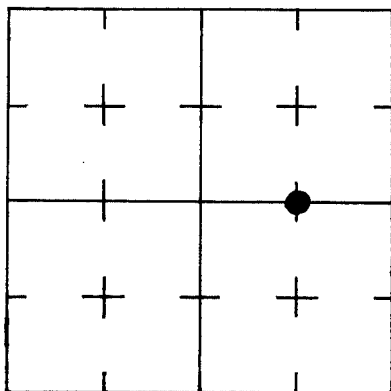
SW CORNER SE/4 NE/4

SECTION 2, T. 7 S. R. 9 W.

2nd PRINCIPLE MERIDIAN

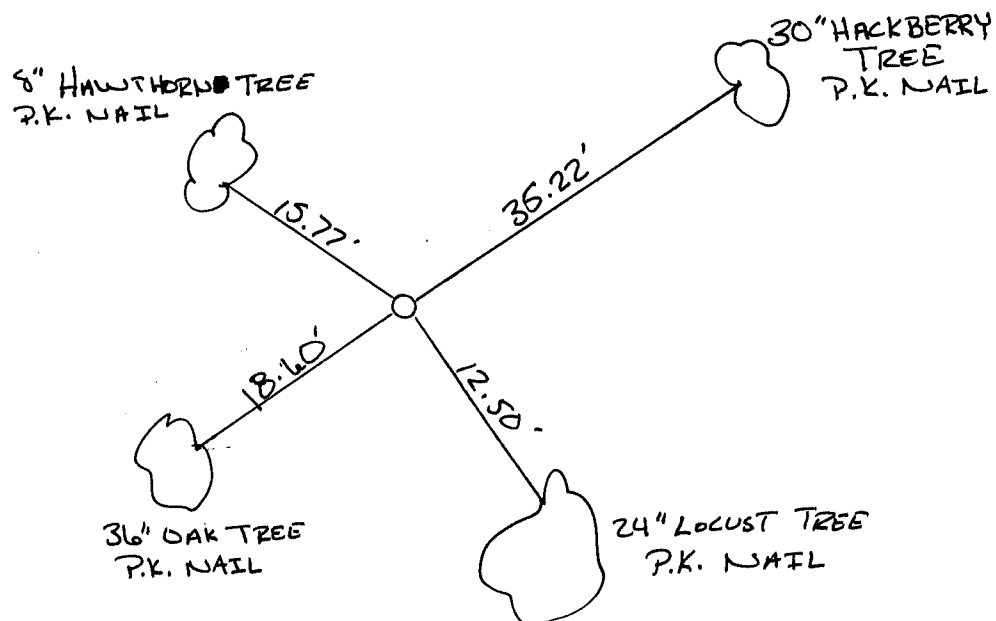
WARRICK COUNTY SURVEYOR
KARAN HARGRAVE-BARNHILL

INDICATE CORNER REFERENCED



DESCRIBE CORNER REFERENCED

OLD STONE HOUSE ESTATES



STATE PLANE COORDINATE DATA

INDIANA ZONE: WEST

X _____

Y _____

ESTABLISHED BY:

APPROVED BY

DATE

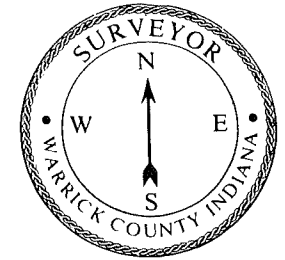
REFERENCED BY:

DATE

RALPH A. EASLEY JR.

9-14-87

CORNER RECORD
WARRICK COUNTY



DESCRIPTION:

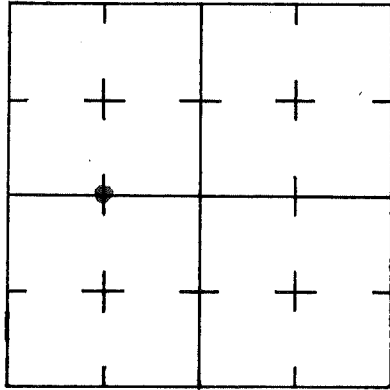
S.W. CORNER SE 1/4 NE 1/4

SECTION 2, T. 7 S. R. 9 W.

2nd PRINCIPLE MERIDIAN

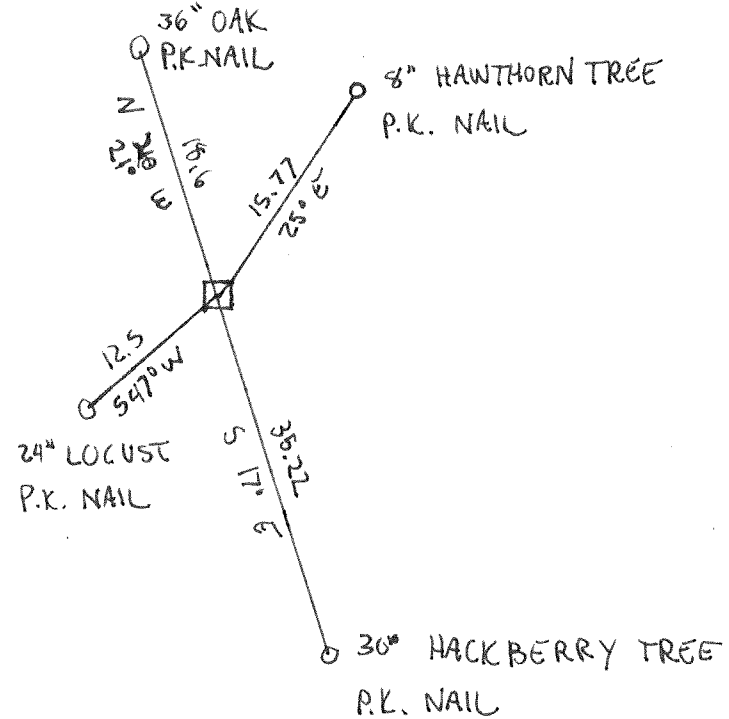
WARRICK COUNTY SURVEYOR
KARAN HARGRAVE-BARNHILL

INDICATE CORNER REFERENCED



DESCRIBE CORNER REFERENCED

LAKEVALE ESTATES - SEC "D"



STATE PLANE COORDINATE DATA

INDIANA ZONE: WEST

X _____

Y _____

ESTABLISHED BY:

APPROVED BY

DATE

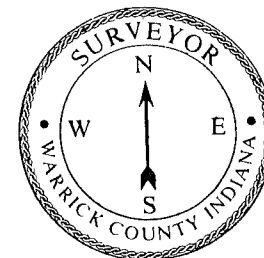
REFERENCED BY:

DATE

RALPH A. EASLEY JR.

DEC 7, 1993

**CORNER RECORD
WARRICK COUNTY**



DESCRIPTION:

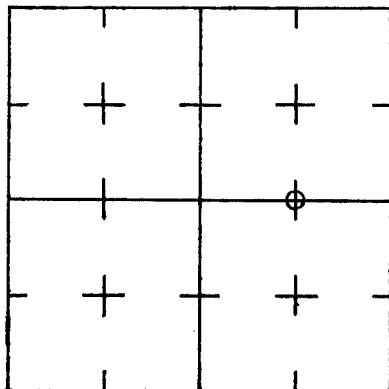
NW CORNER NE ¹/₄ SE ¹/₄

SECTION 2, T. 7 S. R. 9 W.

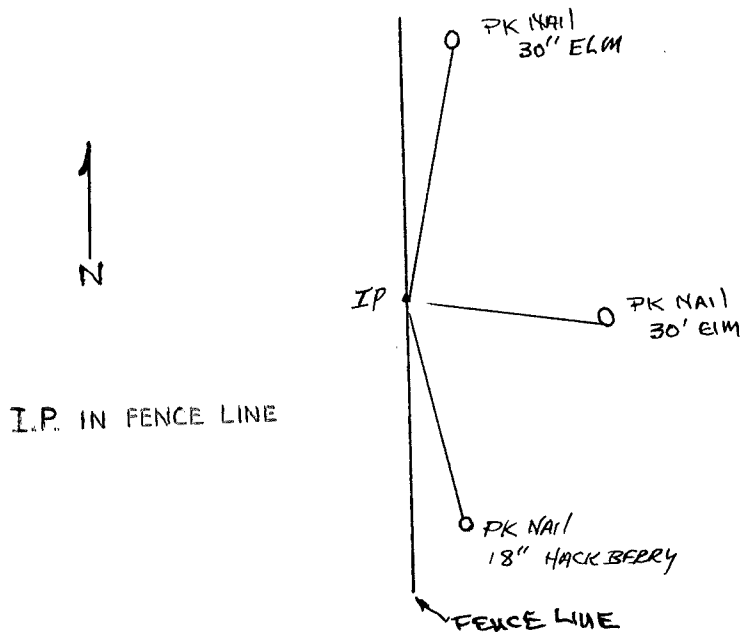
2nd PRINCIPLE MERIDIAN

**WARRICK COUNTY SURVEYOR
MICHAEL IRVIN**

INDICATE CORNER REFERENCED



DESCRIBE CORNER REFERENCED



STATE PLANE COORDINATE DATA

INDIANA ZONE: WEST

X _____

Y _____

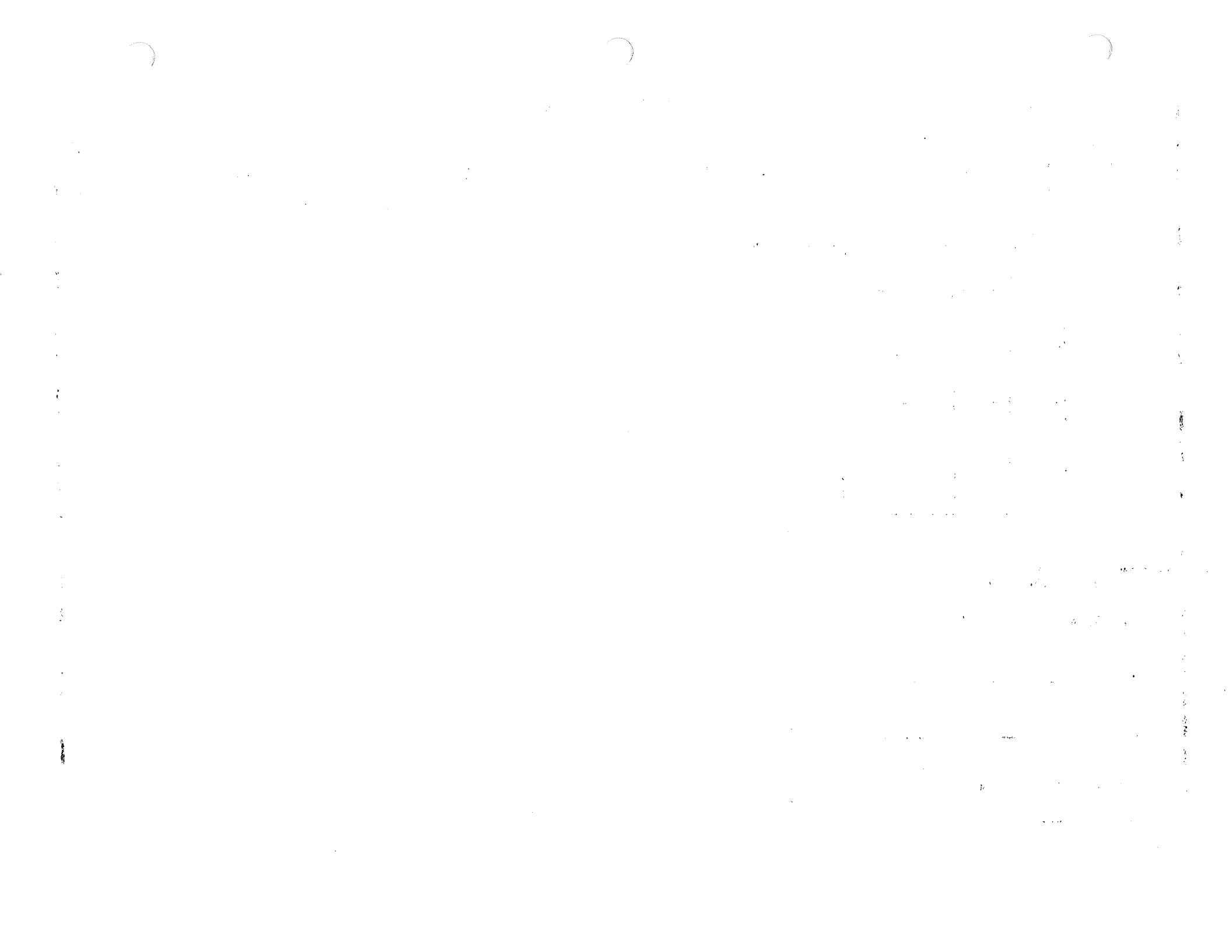
ESTABLISHED BY:

APPROVED BY

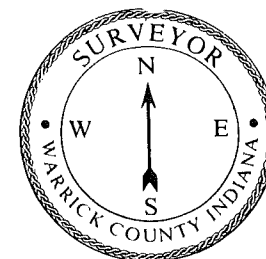
DATE
3-19-73

REFERENCED BY: GEORGE T. WENDELL

DATE



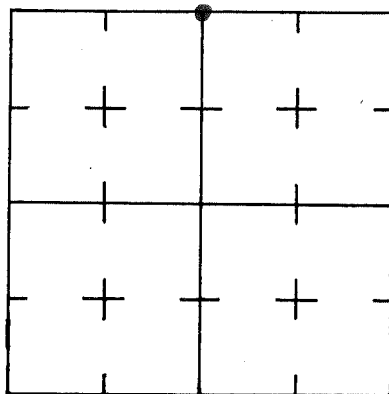
**CORNER RECORD
WARRICK COUNTY**



DESCRIPTION:
N.W CORNER W 1/2 E 1/2
 SECTION 2, T. 7 S. R. 9 W.
 2nd PRINCIPLE MERIDIAN

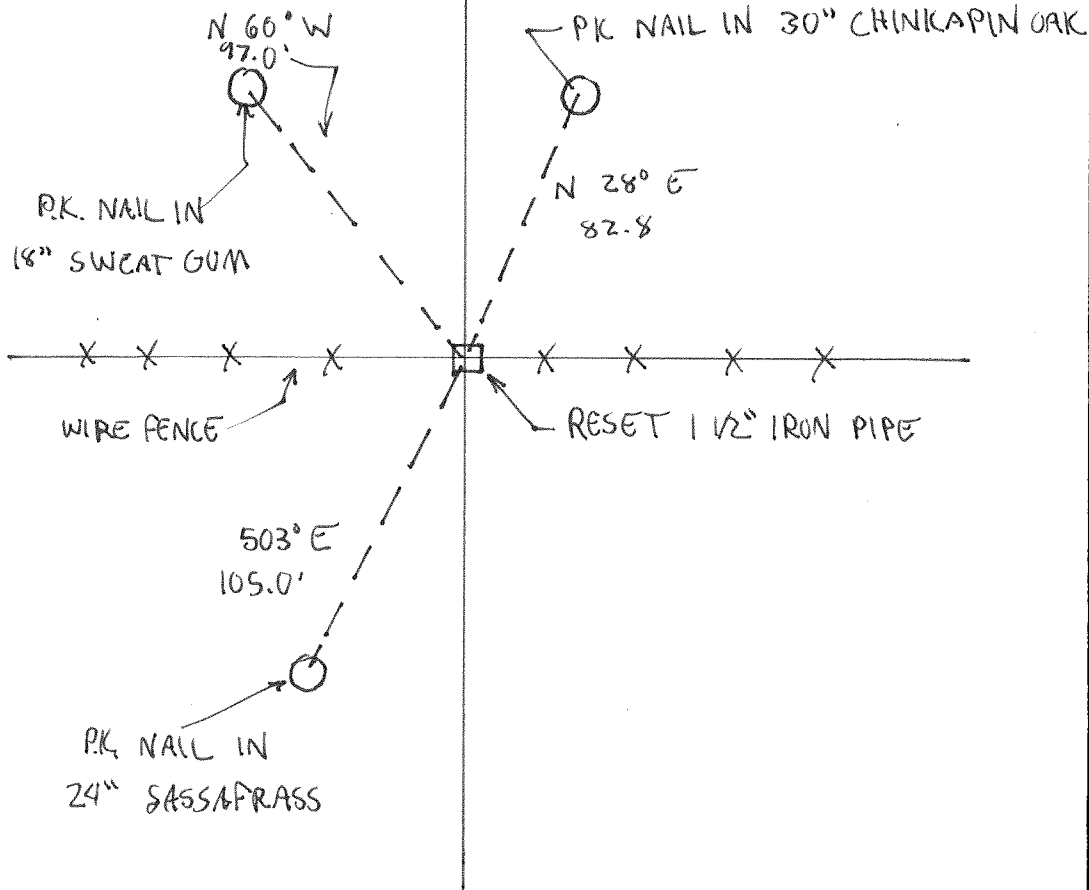
**WARRICK COUNTY SURVEYOR
KARAN HARGRAVE-BARNHILL**

INDICATE CORNER REFERENCED



DESCRIBE CORNER REFERENCED

LACEVALE SEC "B"



STATE PLANE COORDINATE DATA

INDIANA ZONE: WEST

X _____

Y _____

ESTABLISHED BY:

APPROVED BY

DATE

REFERENCED BY:

DATE

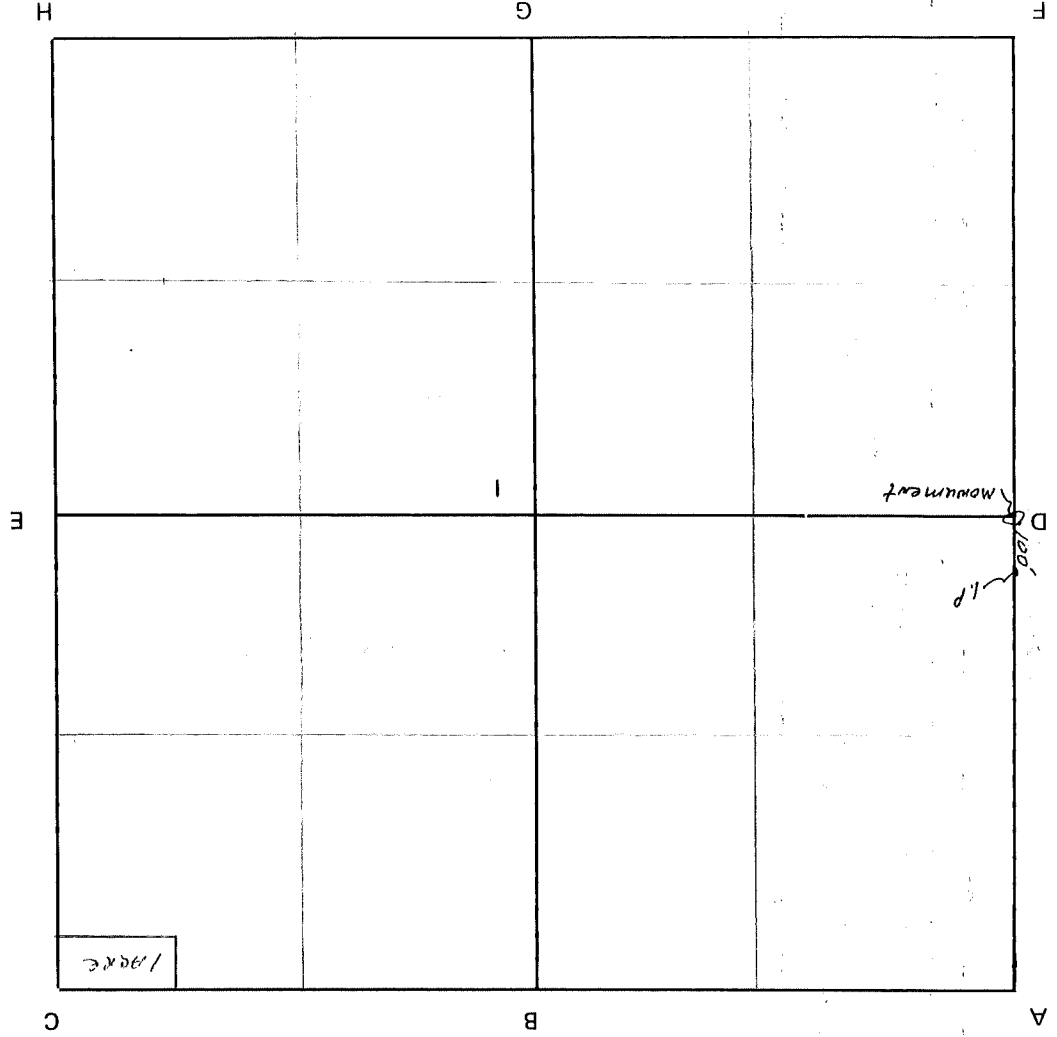
RALPH A EASLEY

NOV 5, 1993

Section 3 Township 7 South Range 9 West 2nd P.M.

CORNER CODE SYSTEM
Warrick County

NOTES



RECORD OF SECTION CORNERS

Warrick County

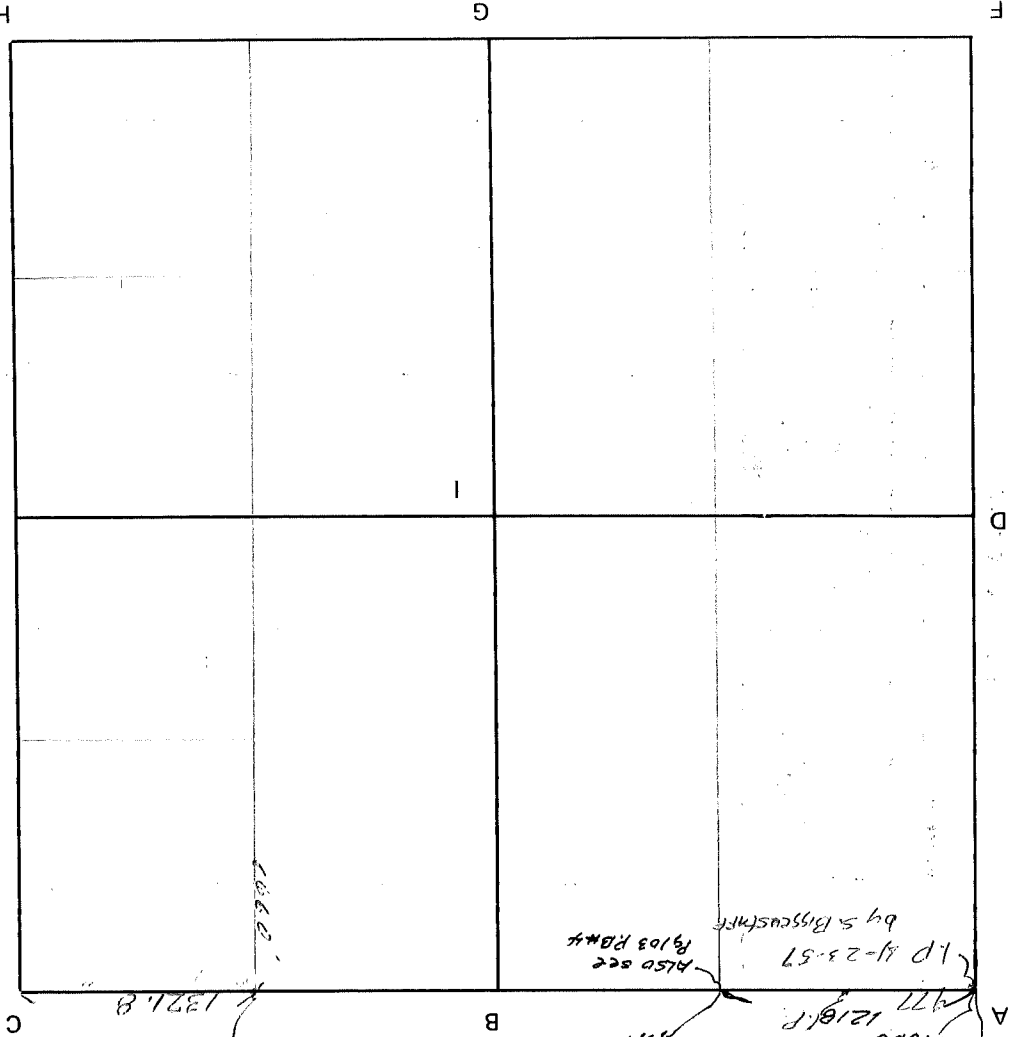
Section 3 Township 7 South Range 9 West 2nd Principle Meridian

Date	Cor	Description of		Distance from Corner	Azimuth from Corner (North Assumed)	Cond	Check By	Remarks
		Monument	Reference					
	A							
	B							
	C							
	D							
	E							
	F							
	G							
	H							
	I							

Section 5 Township South Range 9 West 2nd P.M.

CORNER CODE SYSTEM
Warrick County

LP (Rowers Place)



NOTES

RECORD OF SECTION CORNERS

Warrick County

Section 5

Township

7 South

Range

9 West

2nd Principle Meridian

Date	Cor	Description of		Distance from Corner	Azimuth from Corner (North Assumed)	Cond	Check By	Remarks
		Monument	Reference					
	A							
	B							
	C							
	D							
	E							
	F							
	G							
	H							
	I							

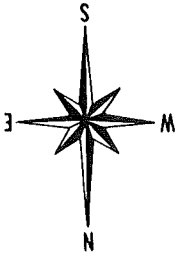
CORNER RECORD
WARRICK COUNTY

DESCRIPTION: ~~NE~~ CORNER NW 1/4 NW 1/4

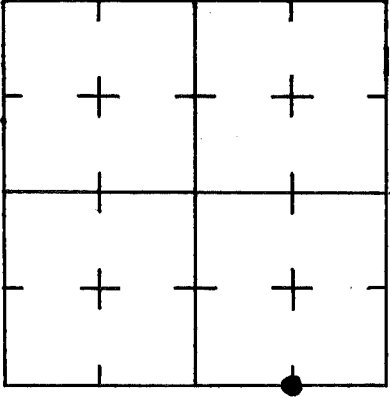
SECTION 5, T. 7 S., R. 9 W.

2nd PRINCIPAL MERIDIAN

WARRICK COUNTY SURVEYOR
MICHAEL F. FELDBUSCH, L.S.



INDICATE CORNER REFERENCED



STATE PLANE COORDINATE DATA

INDIANA ZONE: WEST

X

Y

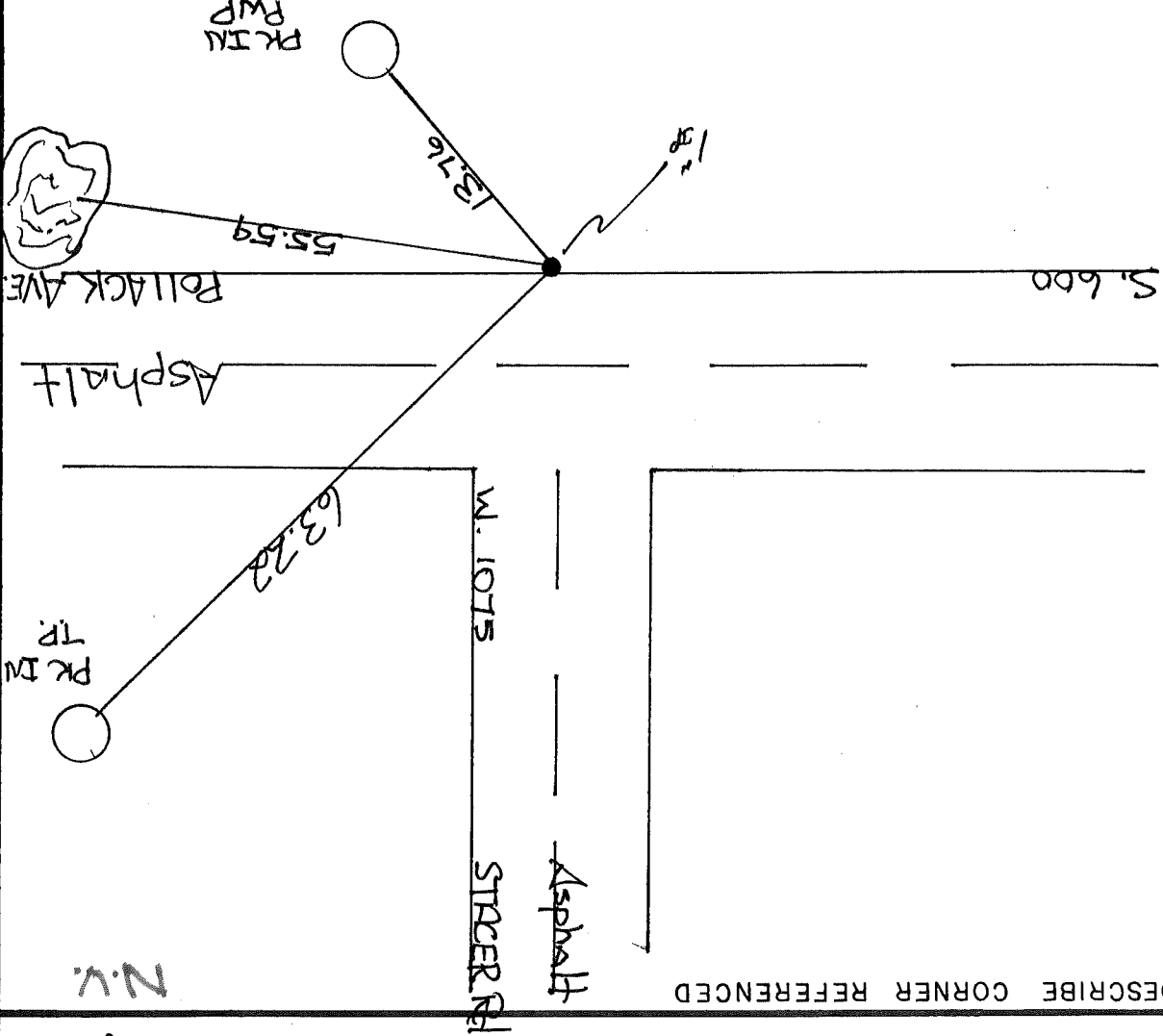
ESTABLISHED BY:

APPROVED BY

DATE

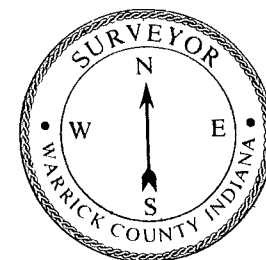
REFERENCED BY:

DATE



Handwritten signature and date: 4-21-83

CORNER RECORD
WARRICK COUNTY



DESCRIPTION:

NE CORNER NW¹/₄ NE¹/₄

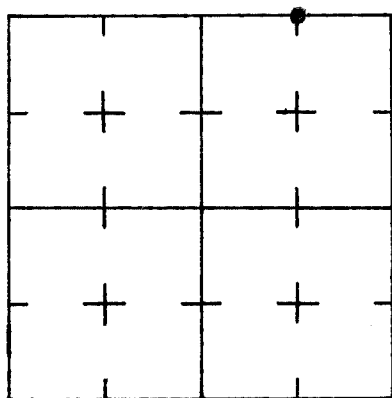
SECTION 5, T. 7 S. R. 9 W.

2nd PRINCIPLE MERIDIAN

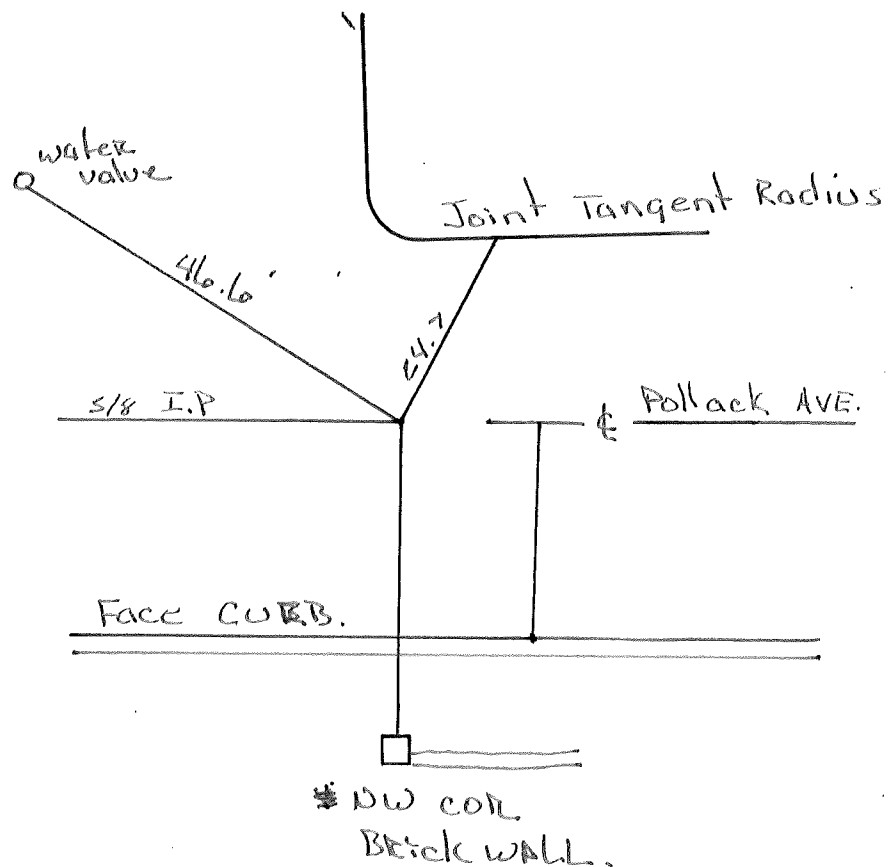
River Bluff sub

WARRICK COUNTY SURVEYOR
MICHAEL IRVIN

INDICATE CORNER REFERENCED



DESCRIBE CORNER REFERENCED



STATE PLANE COORDINATE DATA

INDIANA ZONE: WEST

X _____

Y _____

ESTABLISHED BY:

APPROVED BY

DATE

REFERENCED BY:

DATE

Alvin L. Paul

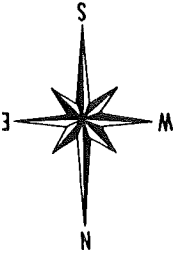
NOV 17, 1986

CORNER RECORD
WARRICK COUNTY

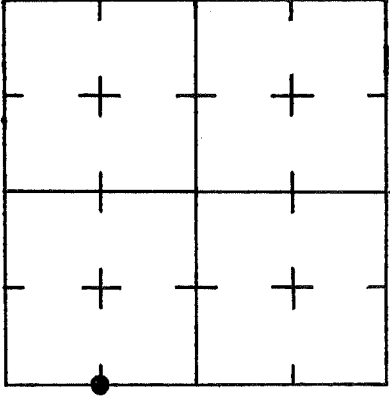
DESCRIPTION:
NW CORNER ~~NE 1/4 NE 1/4~~

SECTION 5, T. 7 S.,
R. 9 W., 2nd PRINCIPAL MERIDIAN

WARRICK COUNTY SURVEYOR
MICHAEL F. FELDBUSCH, L.S.



INDICATE CORNER REFERENCED



STATE PLANE COORDINATE DATA

INDIANA ZONE: WEST

X

Y

ESTABLISHED BY:

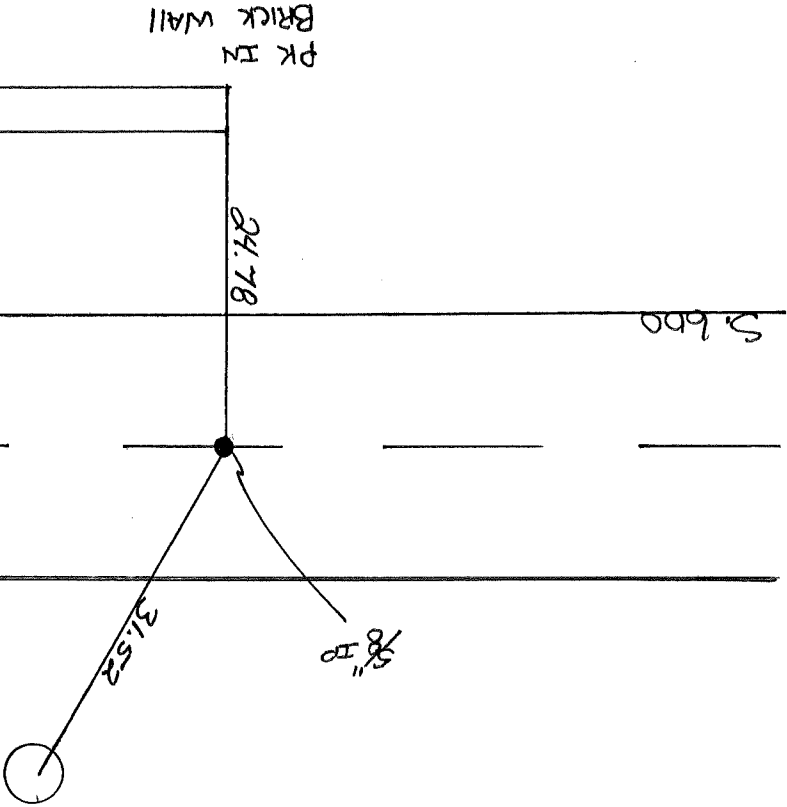
APPROVED BY

DATE

REFERENCED BY:

DATE

DESCRIBE CORNER REFERENCED



CENTER OF
MANHOLE COVER

N.V.

Asphalt

Rollock Av

PK IN
BRICK WALL

24.78

5/8"
IP

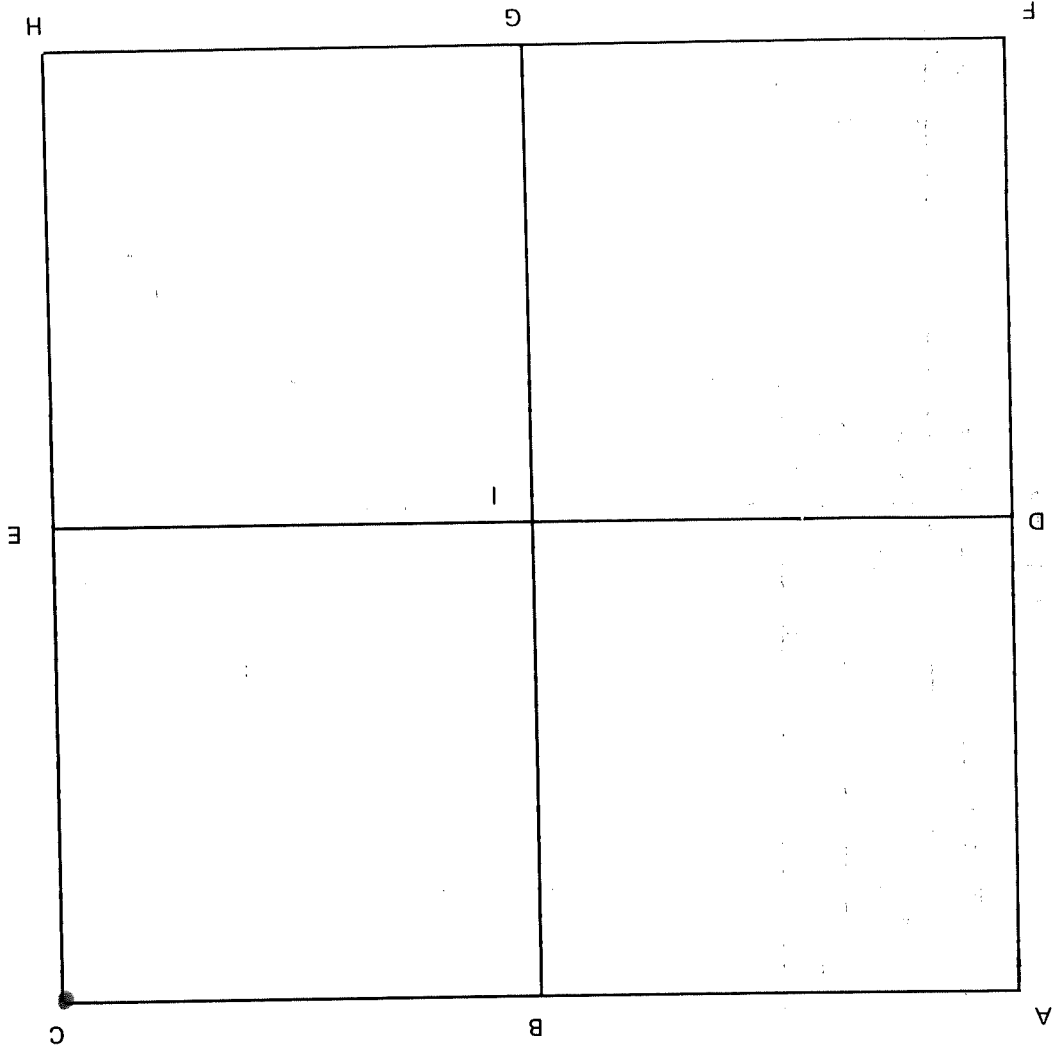
31.52

4-21-83

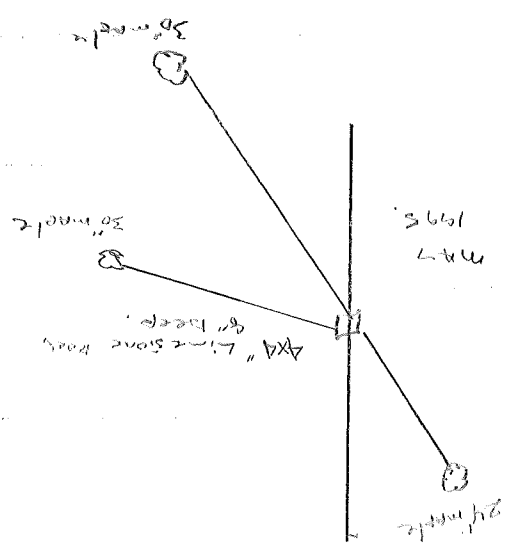
Handwritten signature: My Beck

Section 12 Township 7 South Range 9 West 2nd P.M.

CORNER CODE SYSTEM
Warrick County



NOTES



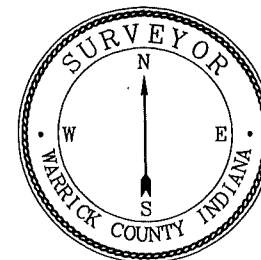
RECORD OF SECTION CORNERS

Warrick County

Section 12 Township 7 South Range 9 West 2nd Principle Meridian

Date	Cor	Description of		Distance from Corner	Azimuth from Corner (North Assumed)	Cond	Check By	Remarks
		Monument	Reference					
	A							
	B							
	C							
	D							
	E							
	F							
	G							
	H							
	I							

CORNER RECORD SPENCER COUNTY



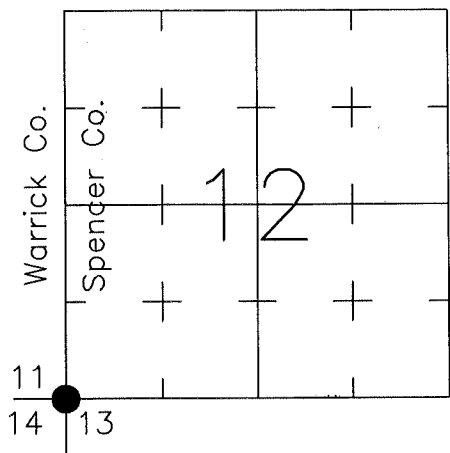
DESCRIPTION:

SOUTHWEST CORNER _____
SECTION 12, T. 7 S., R. 8 W.
2nd PRINCIPAL MERIDIAN

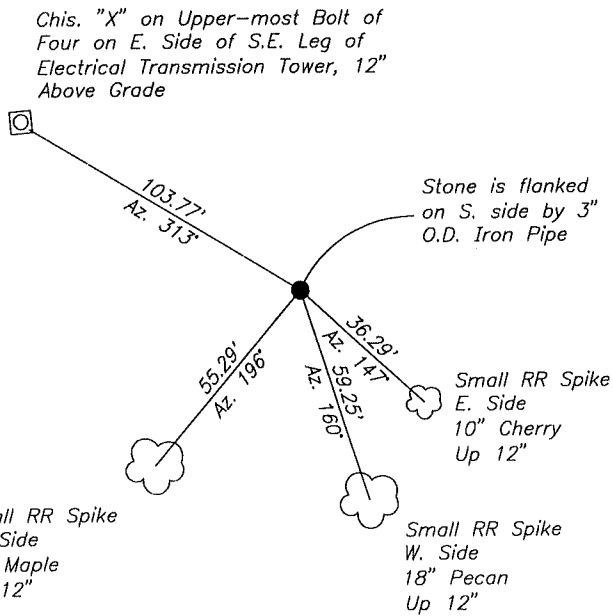
WARRICK COUNTY SURVEYOR
KARAN HARGRAVE-BARNHILL

FOR NOTES ON CORNER HISTORY SEE REVERSE.

INDICATE CORNER REFERENCED:



MONUMENT TYPE: SANDSTONE
SIZE: 8" X 4"
DEPTH/HEIGHT: 8" BELOW GRADE
REFERENCE TIE DRAWING:



STATE PLANE COORDINATE DATA:
INDIANA WEST ZONE, NAD 83 (1997)
U.S. SURVEY FEET

X
Y

COORDINATES ESTABLISHED BY:

APPROVED BY:

DATE:

REFERENCED BY: M.BADGER/G.M.BURRESS DATE: 3/21/03

APPROVED BY: P.JONES, RLS#9600016

DATE: 7/29/03

CORNER FILE CODE:
T7S-R8W-J-21

CORNER HISTORY:

ORIGINAL USPLS SURVEY: Corner established by Sam H. Smith, Nov. 12, 1806 "Post".

COUNTY SURVEYOR'S BOOKS: Spencer Co. Book 8 Pp. 46-47; Wm. W. Wells SCS Nov. 8, 1809 "Stone Original trees standing".

Warrick Co. Book 1 P. 102 (Sec. No. is unclear, appears to subdivide the NE 1/4 of Sec. 14 but does not identify monuments).

OTHER SURVEYS AND PLATS: No current corner record cards were available in either Warrick or Spencer Counties.

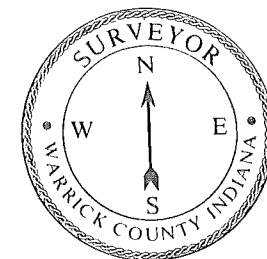
1975 road plans for S.R. 66, INDOT Proj. F-174) include ties to a stone found.

VERIFICATION OF CORNER POSITION: April, 2003: The sandstone shown was found in place. Ties were made to centerline control monuments in SR 66; the stone's position was consistent with the 1975 road plan dimensions. For additional information, see the Boundary Retracement Survey dated 7/10/03, recorded in _____ in Warrick Co. and in _____ in Spencer County (Bernardin-Lochmueller & Assoc. Proj. No. 102-0060-05V/SV0B).

Perry E. Jones 7/29/03

CORNER FILE CODE:
T7S-R8W-J-21

CORNER RECORD
WARRICK COUNTY



DESCRIPTION:

SW CORNER NE 1/4

SECTION 1, T. 7 S. R. 9 W.

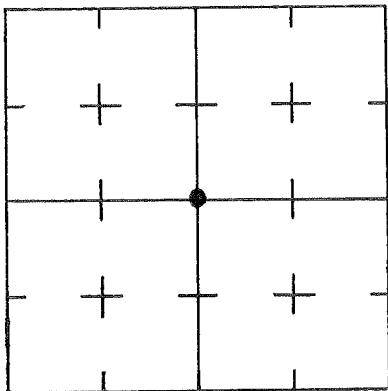
2nd PRINCIPLE MERIDIAN

WARRICK COUNTY SURVEYOR

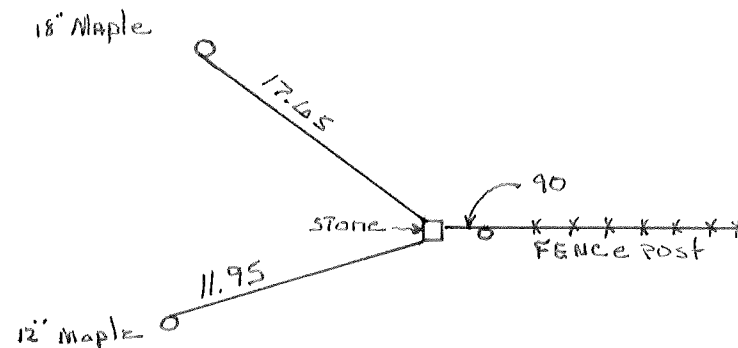
MICHAEL IRVIN

CUPRESS ACRES NO. 3 - SEC. "A" # 296

INDICATE CORNER REFERENCED



DESCRIBE CORNER REFERENCED



STATE PLANE COORDINATE DATA

INDIANA ZONE: WEST

X _____

Y _____

ESTABLISHED BY:

APPROVED BY

DATE

REFERENCED BY:

DATE

EDWIN O. BOYD

MARCH 10, 1982

