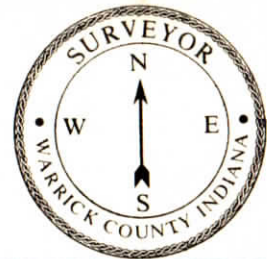


CORNER RECORD
WARRICK COUNTY

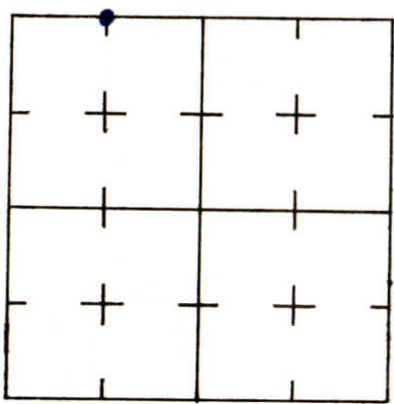


DESCRIPTION:

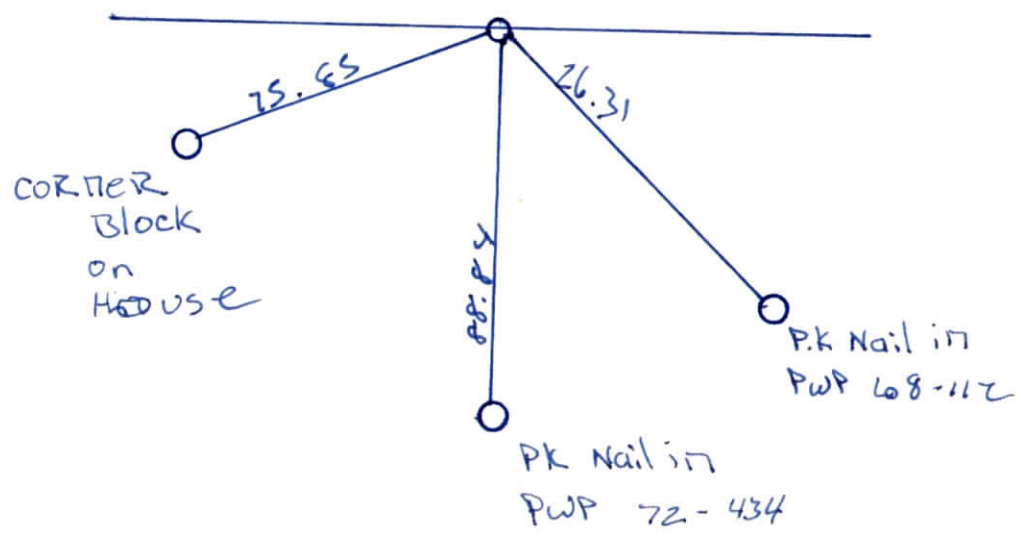
NE CORNER NW 1/4 NW 1/4
SECTION 36, T. 6 S. R. 9 W.
2nd PRINCIPLE MERIDIAN
Heritage Place 5th Addition

WARRICK COUNTY SURVEYOR
MICHAEL IRVIN

INDICATE CORNER REFERENCED



DESCRIBE CORNER REFERENCED



STATE PLANE COORDINATE DATA

INDIANA ZONE: WEST

X _____

Y _____

ESTABLISHED BY:

APPROVED BY

DATE

REFERENCED BY:

DATE

Michael E. Feldbusch

NOV 17, 1986

CORNER RECORD
WARRICK COUNTY



DESCRIPTION :

NE CORNER NW/4 NW/4

SECTION 36, T. 6 S. R. 9 W.

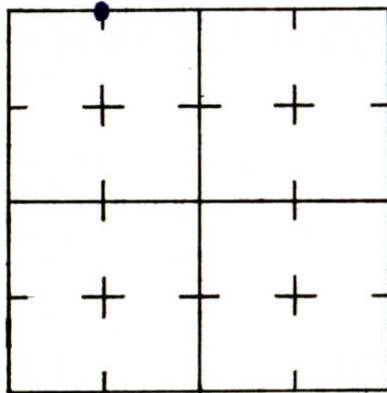
2nd PRINCIPLE MERIDIAN

Heritage Place

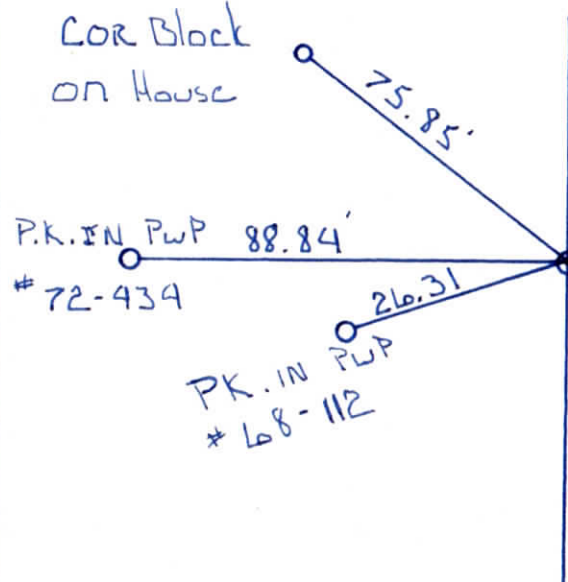
WARRICK COUNTY SURVEYOR

MICHAEL IRVIN

INDICATE CORNER REFERENCED



DESCRIBE CORNER REFERENCED



STATE PLANE COORDINATE DATA

INDIANA ZONE: WEST

X _____

Y _____

ESTABLISHED BY:

APPROVED BY

DATE

REFERENCED BY:

DATE

Albert K Holtz

July 10 1985

CORNER RECORD
WARRICK COUNTY

DESCRIPTION:

NE CORNER NW 1/4 NW 1/4

SECTION 36, T. 6 S. R. 9 W.

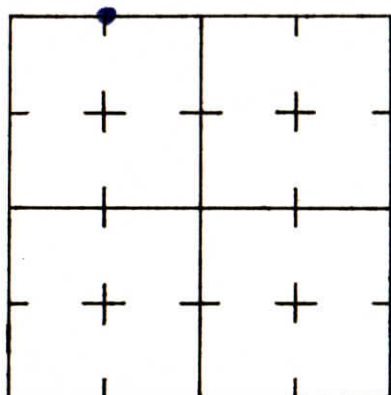
2nd PRINCIPLE MERIDIAN

Spring Corner Sub Division

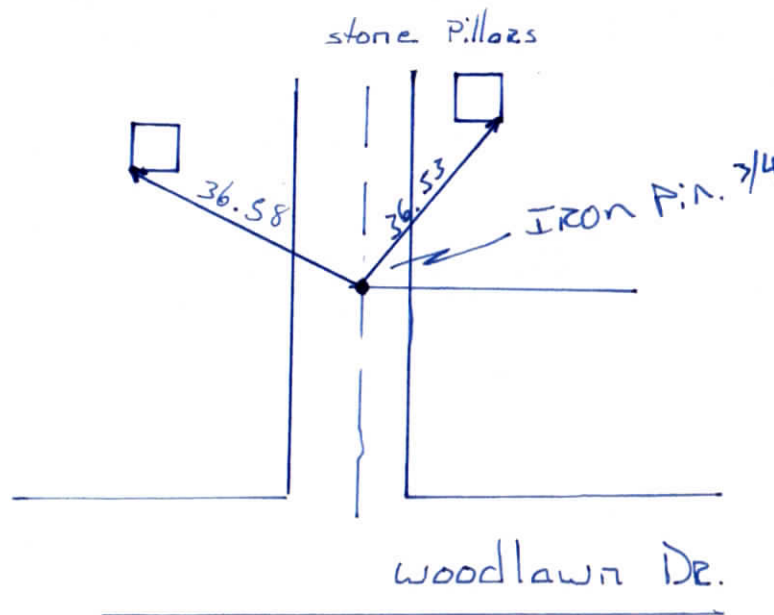
WARRICK COUNTY SURVEYOR
MICHAEL IRVIN



INDICATE CORNER REFERENCED



DESCRIBE CORNER REFERENCED



STATE PLANE COORDINATE DATA

INDIANA ZONE: WEST

X _____

Y _____

ESTABLISHED BY:

APPROVED BY

DATE

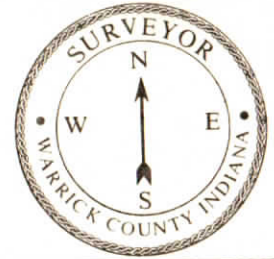
REFERENCED BY:

DATE

Elmo A. Dockery

Sept. 14 1983

CORNER RECORD
WARRICK COUNTY



DESCRIPTION :

SW CORNER SW¹/₄ SW¹/₄

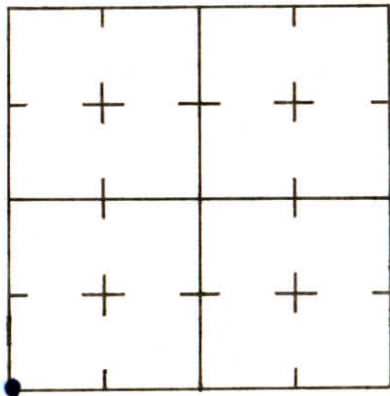
SECTION 36, T. 6 S. R. 9 W.

2nd PRINCIPLE MERIDIAN

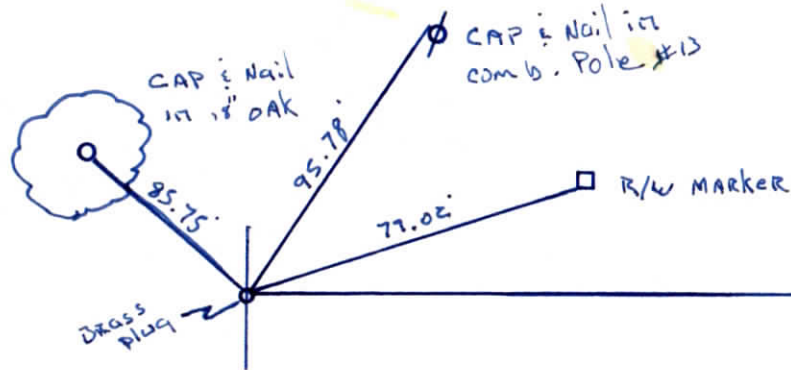
WARRICK COUNTY SURVEYOR
MICHAEL IRVIN

Whispering Hills Subdivision - section "B"

INDICATE CORNER REFERENCED



DESCRIBE CORNER REFERENCED



STATE PLANE COORDINATE DATA

INDIANA ZONE: WEST

X _____

Y _____

ESTABLISHED BY:

APPROVED BY

DATE

REFERENCED BY:

DATE

Ralph A. Easley, Jr.

Oct 11, 1977

CORNER RECORD
WARRICK COUNTY



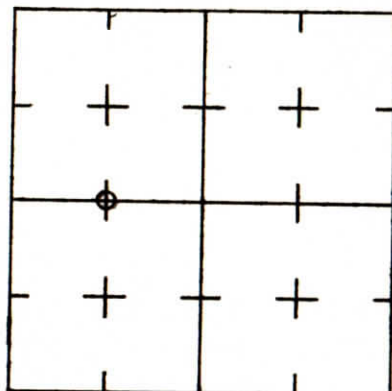
DESCRIPTION:

NE CORNER NW¹/₄ SW¹/₄

SECTION 36, T. 6 S. R. 9 W.
2nd PRINCIPLE MERIDIAN

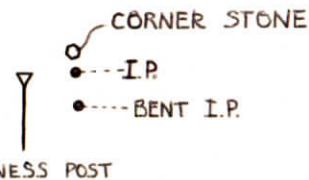
WARRICK COUNTY SURVEYOR
MICHAEL IRVIN

INDICATE CORNER REFERENCED



DESCRIBE CORNER REFERENCED

SHARON RD.



STATE PLANE COORDINATE DATA

INDIANA ZONE: WEST

X _____

Y _____

ESTABLISHED BY:

I.P. NEXT TO CORNER STONE
WITNESS POST SET NEXT TO STONE SOUTH
OF SHARON RD.

APPROVED BY

NOT VERIFIED

DATE
10/22/73

REFERENCED BY:

DATE

000064

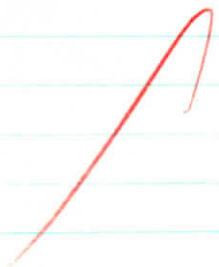
NE cor NW $\frac{1}{4}$ SW $\frac{1}{4}$ sec 36-T65R 9W

Type Monument: I.P. next to corner stone

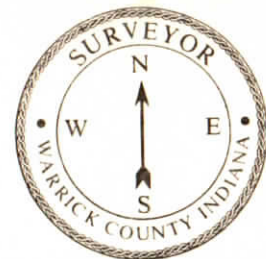
(witness post set next to stone south of Skyrin rd)

Date referenced: 10-22-73

referenced by: SWC



**CORNER RECORD
WARRICK COUNTY**



DESCRIPTION:

SW CORNER sw/4 sw/4

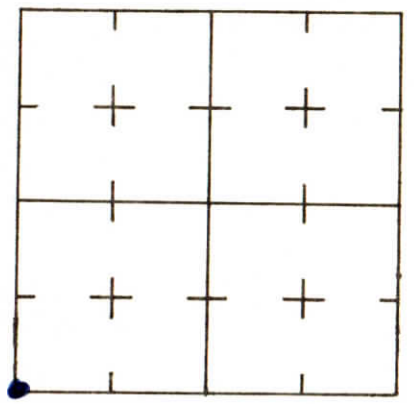
SECTION 36, T. 6 S. R. 9 W.

2nd PRINCIPLE MERIDIAN

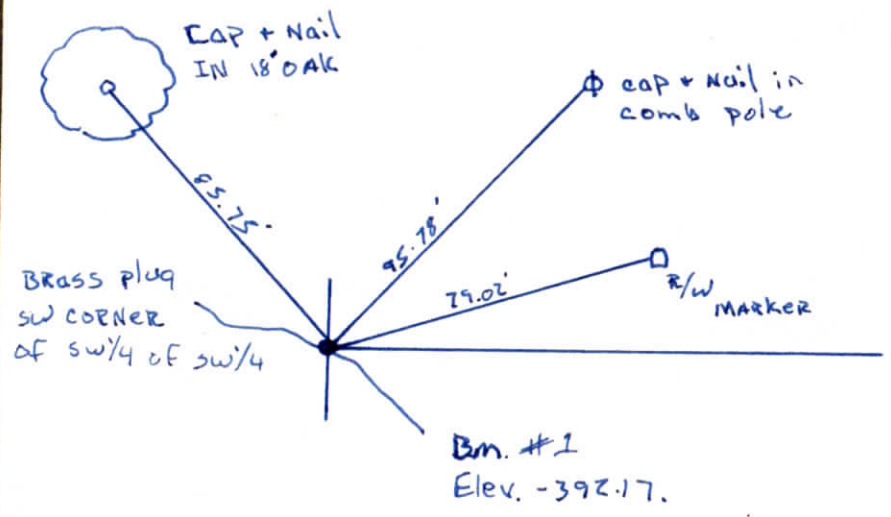
Whispering Hills Subdivision sec "B" # 271

**WARRICK COUNTY SURVEYOR
MICHAEL IRVIN**

INDICATE CORNER REFERENCED



DESCRIBE CORNER REFERENCED



STATE PLANE COORDINATE DATA

INDIANA ZONE: WEST

X _____

Y _____

ESTABLISHED BY:

APPROVED BY

DATE

REFERENCED BY:

DATE

Ralph A Easley, Jr

Oct. 12, 1977

CORNER RECORD
WARRICK COUNTY

DESCRIPTION :

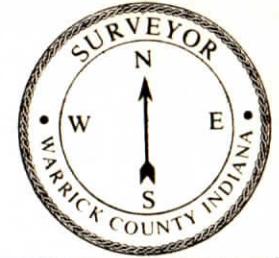
NW CORNER NW 1/4 NE 1/4

SECTION 36, T. 6 S. R. 9 W.

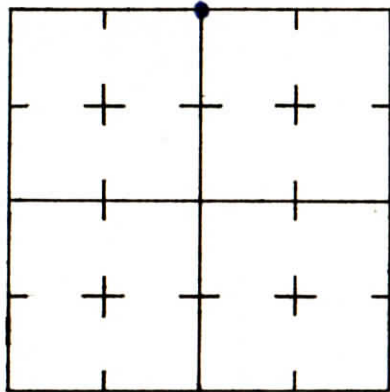
2nd PRINCIPLE MERIDIAN

Plantation Manor

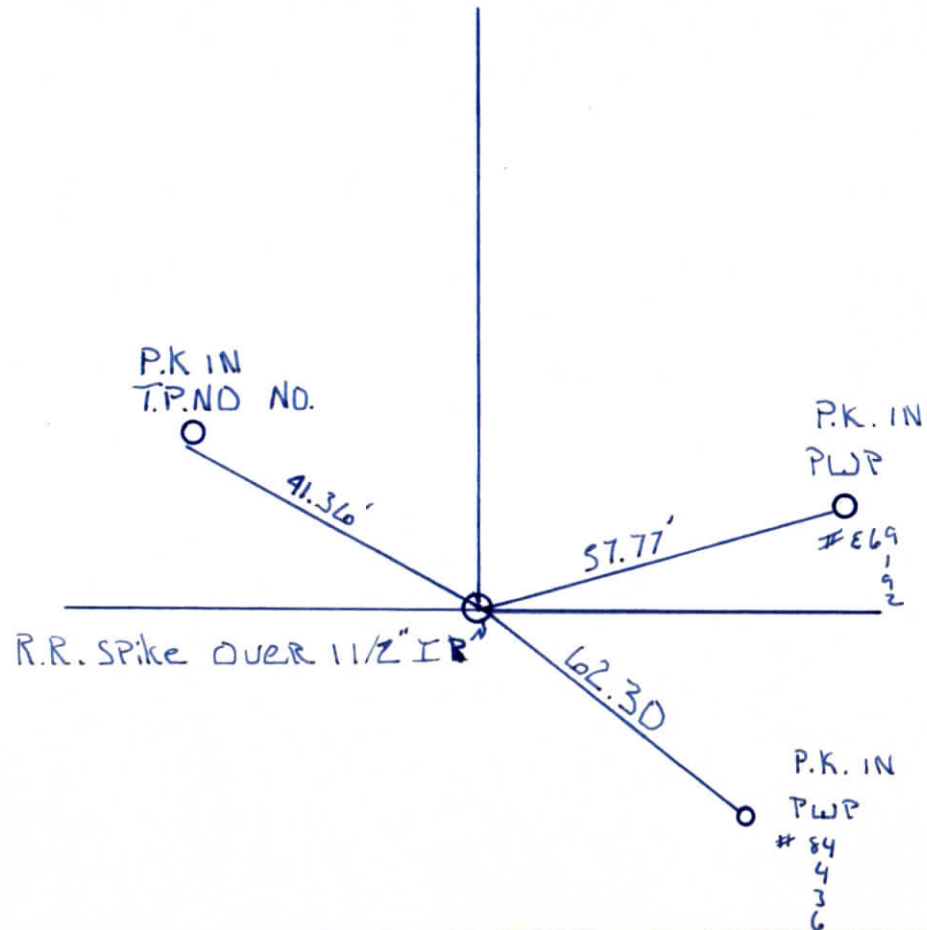
WARRICK COUNTY SURVEYOR
MICHAEL IRVIN



INDICATE CORNER REFERENCED



DESCRIBE CORNER REFERENCED



STATE PLANE COORDINATE DATA

INDIANA ZONE: WEST

X _____

Y _____

ESTABLISHED BY:

APPROVED BY

DATE

REFERENCED BY:

DATE

Albert K. Holtz

MAY 9, 1984

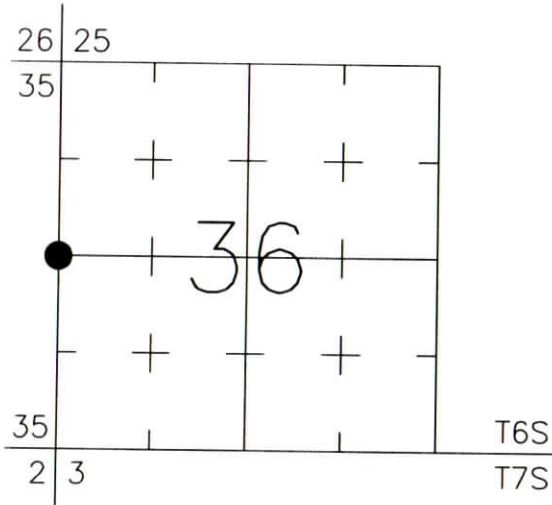
CORNER RECORD
WARRICK COUNTY



DESCRIPTION:
SOUTHWEST CORNER NORTHWEST QUARTER
SECTION 36, T. 6 S., R. 9 W.
2nd PRINCIPLE MERIDIAN

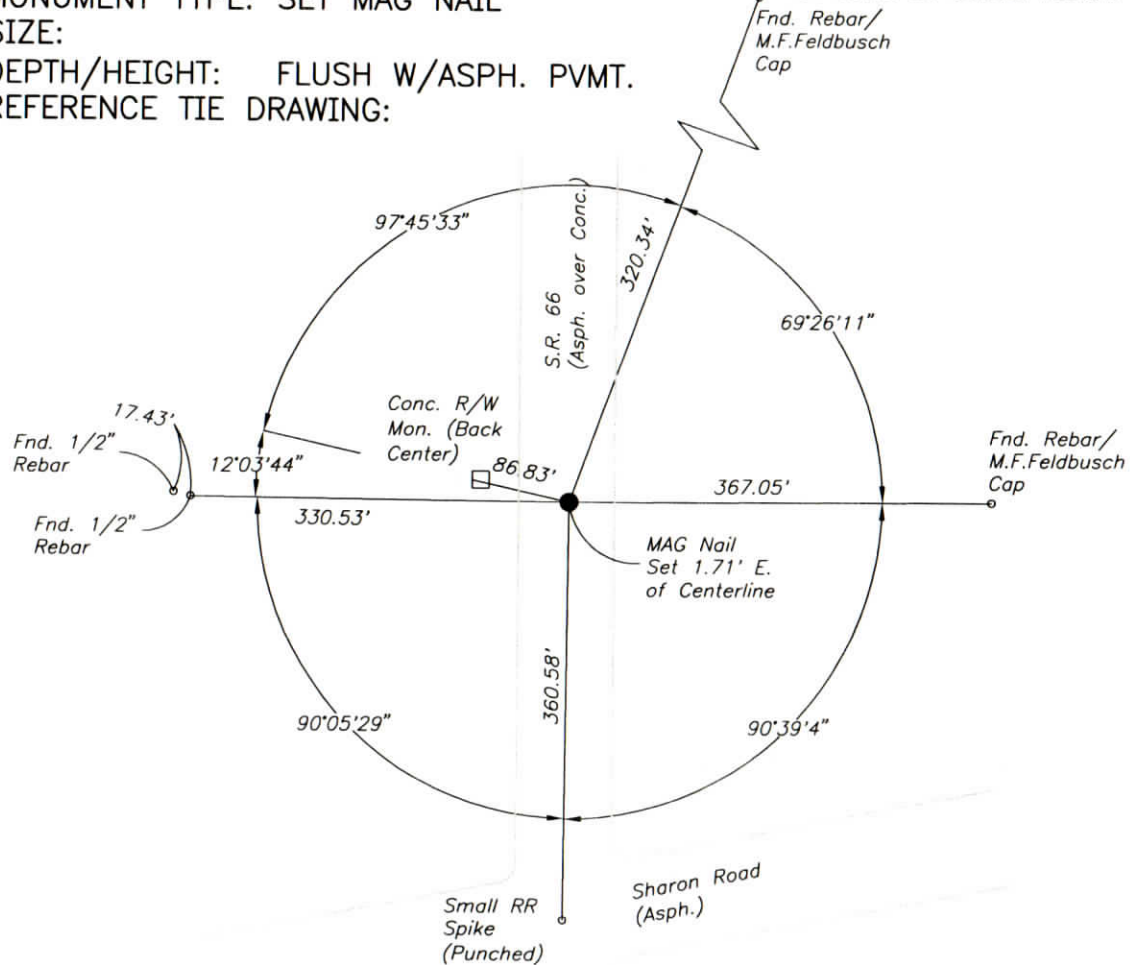
WARRICK COUNTY SURVEYOR
KARAN HARGRAVE-BARNHILL

INDICATE CORNER REFERENCED:



MONUMENT TYPE: SET MAG NAIL
SIZE:
DEPTH/HEIGHT: FLUSH W/ASPH. PVMT.
REFERENCE TIE DRAWING:

FOR NOTES ON CORNER HISTORY SEE REVERSE.



STATE PLANE COORDINATE DATA:
INDIANA WEST ZONE, NAD 83 (1997)
U.S. SURVEY FEET

X _____

Y _____

COORDINATES ESTABLISHED BY:

APPROVED BY:

DATE:

REFERENCED BY: D.DREES/C.BINKLEY

APPROVED BY: P.JONES, RLS#9600016

DATE: 8/28/02

DATE: 8/29/02

CORNER FILE CODE:
T6S-R9W-X-21

CORNER HISTORY:

CORNER FILE CODE:
T6S-R9W-X-21

ORIGINAL USPLS SURVEY: Corner established by Jacob Fowler, Dec. 18, 1805 "Post".

COUNTY SURVEYOR'S BOOKS: Book 1 P. 18: Isaac Adams WCS May 5, 1853 "Stone"

Book 3 P. 156: Louis Meyer WCS Dec. 14, 1910 "Old Corner"

Book 3 P. 283 B.C.Samples WCS Feb. 25, 1932 "Old corner found"

OTHER SURVEYS AND PLATS: "Corner Code System" card shows undated notation "Stone 4' east of centerline".

Road plans for SR 66, INDOT (State Hwy. Comm.) Proj. 174(1) 1954, give a station and offset to the 1/4-section corner (do not identify a found monument), being 4' east of the proposed centerline.

The 1976 plat of Sudamar Heights ties to the corner (no monument identified), being 1.71' east of centerline.

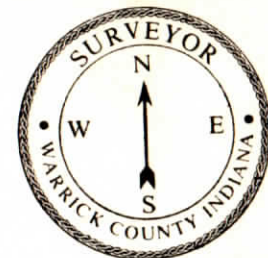
Location Control Route Survey for SR 66 (Doc. 1997R-007360) (section corner ties performed in 1991); no monument was found.

VERIFICATION OF CORNER POSITION: August, 2002: The corner position shown was re-established using the Plat of Sudamar Heights. The plat dimension of 1.71' east of the SR 66 centerline was held to determine the easting (being in a long tangent section, this was considered the most reliable evidence), the northing position was determined using monuments found along the southern line of Sudamar Heights. The re-established position is subject to the following uncertainties; 1.3' westerly based on dimensions to lot corners in Sudamar Heights, 2.3' easterly based on the 4' offset called for in the 1954 road plans, and up to 18' northerly based on re-established stationing from the 1954 road plans. Rebars found along the north line of the SE 1/4 of Section 35 aligned reasonably well with the re-established northing. A MAG nail was set 8/28/02.

COMMENTS/RECOMMENDATIONS: Upcoming construction along S.R. 66 will likely involve replacement of this corner monument. If the construction project involves removal of existing concrete pavement, it may also provide an opportunity to search for the stone identified on the old Corner Code System card in order to resolve the above-described uncertainties.

Perry E. Jones 8/29/02

CORNER RECORD
WARRICK COUNTY



DESCRIPTION:

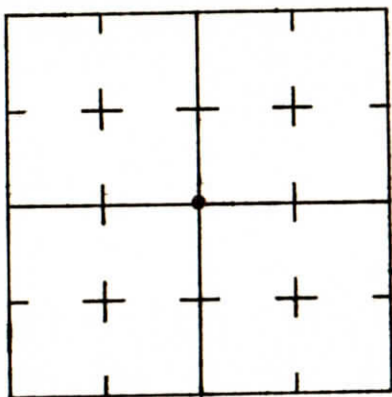
NE CORNER SW 1/4

SECTION 36, T. 6 S. R. 9 W.

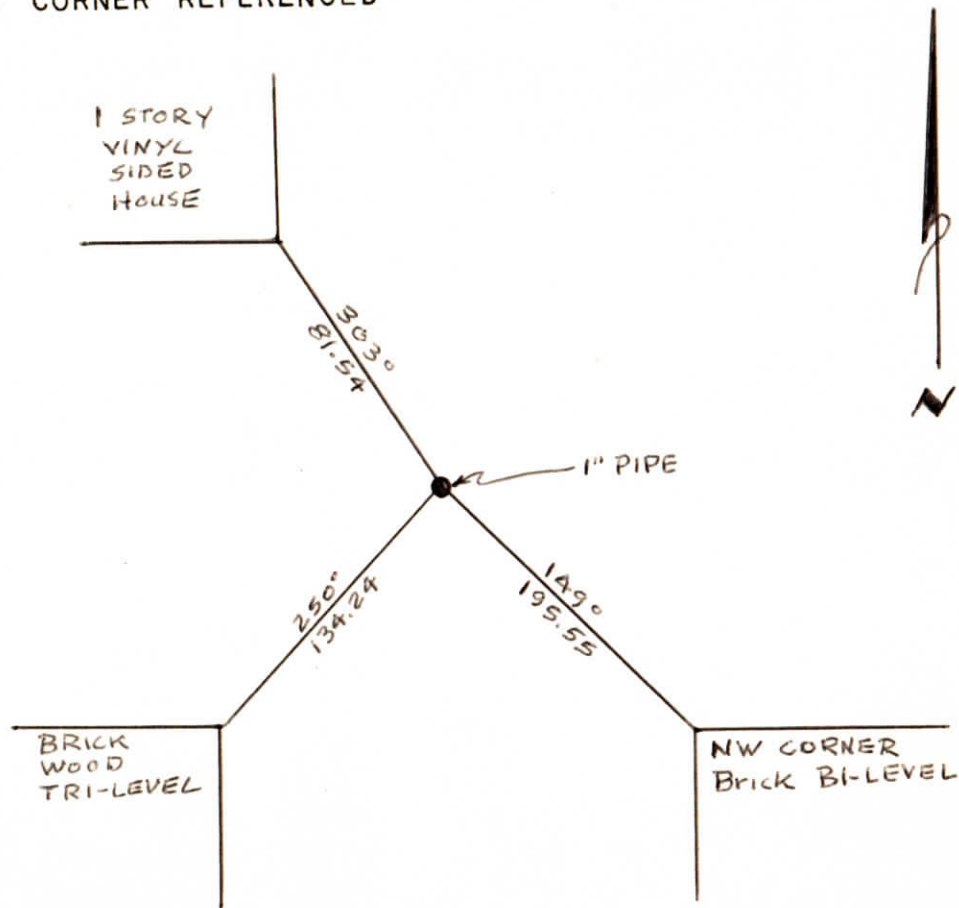
2nd PRINCIPLE MERIDIAN

WARRICK COUNTY SURVEYOR
MICHAEL IRVIN

INDICATE CORNER REFERENCED



DESCRIBE CORNER REFERENCED



STATE PLANE COORDINATE DATA

INDIANA ZONE: WEST

X _____

Y _____

ESTABLISHED BY:

APPROVED BY

DATE

REFERENCED BY: *Mike Feldbusch*

DATE

CORNER RECORD
WARRICK COUNTY



WARRICK COUNTY SURVEYOR
MICHAEL F. FELDBUSCH, L.S.

DESCRIPTION:

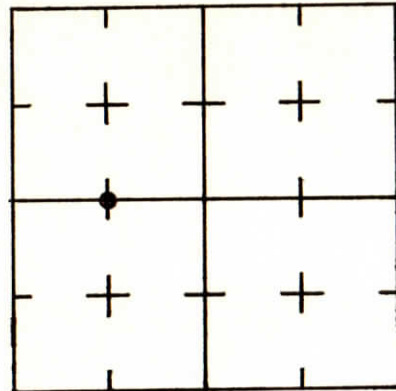
SE CORNER SW 1/4 NW 1/4
SECTION 36, T. 6 S. R. 9 W.
2nd PRINCIPAL MERIDIAN

DESC
SW
SECTI
2nd
Roy

NOT VERIFIED

INDICATE CORNER REFERENCED

DESCRIBE CORNER REFERENCED

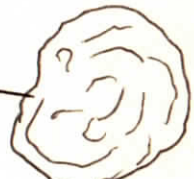


PK IN
36" TREE

29.22'

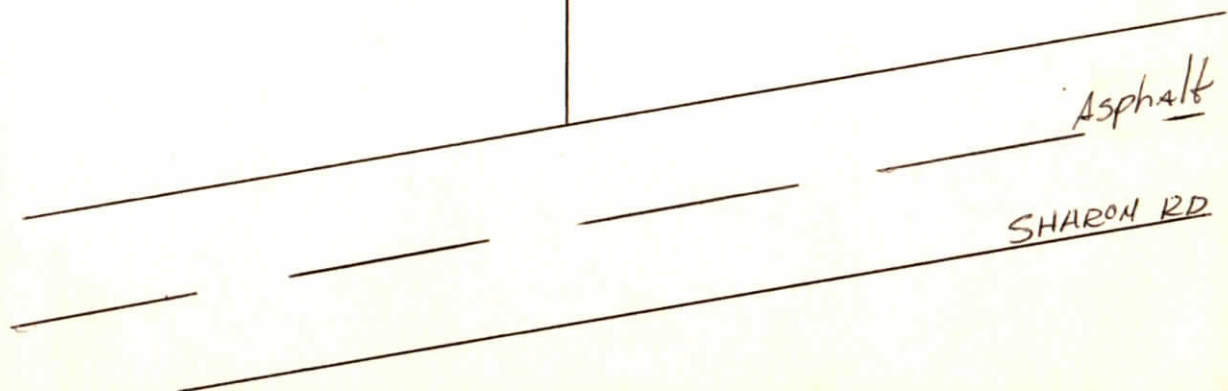
5/8" IP
W/ FENCE
POLE

38.28'



PK IN
38" TREE

129.79'



Asphalt

SHARON RD

STATE PLANE COORDINATE DATA

INDIANA ZONE: WEST

X _____

Y _____

ESTABLISHED BY:

STATE P
INDIANA

X _____

Y _____

ESTABL

APPROV

APPROVED BY

DATE

REFERENCED BY:

DATE

Hay Beck

4/3/84

CORNER RECORD
WARRICK COUNTY



DESCRIPTION:

NE CORNER SE 1/4 SW 1/4

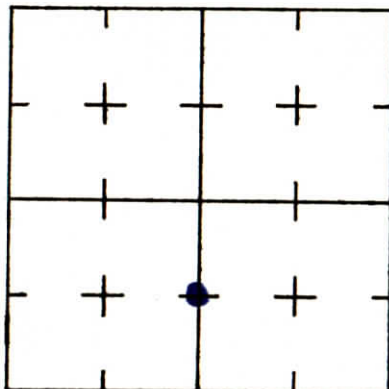
SECTION 36, T. 6 S. R. 9 W.

2nd PRINCIPLE MERIDIAN

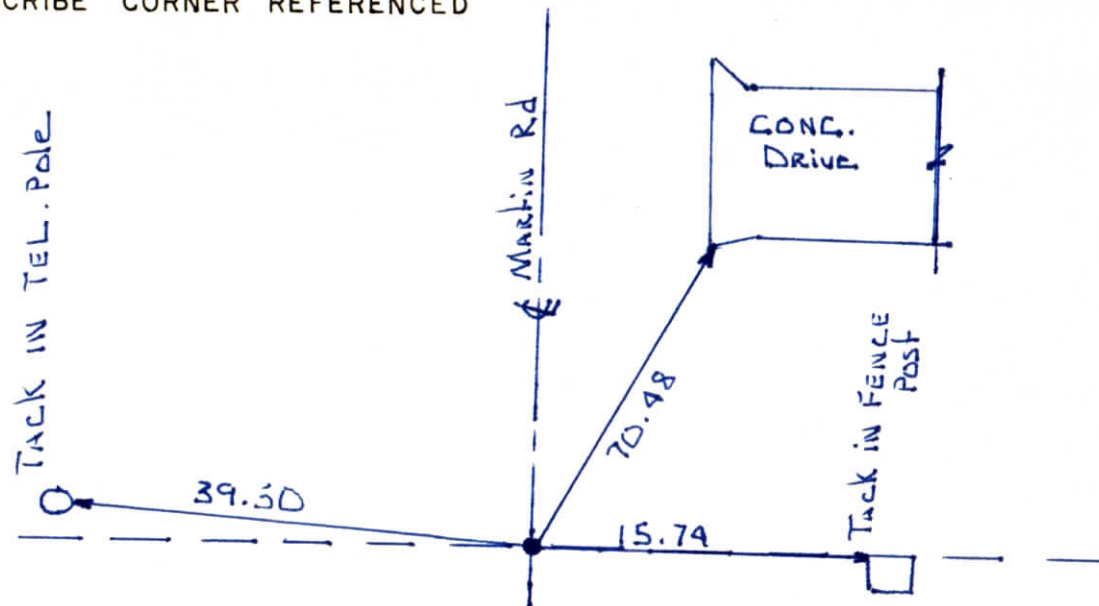
Ridge wood Subdivision # 240

WARRICK COUNTY SURVEYOR
MICHAEL IRVIN

INDICATE CORNER REFERENCED



DESCRIBE CORNER REFERENCED



STATE PLANE COORDINATE DATA

INDIANA ZONE: WEST

X _____

Y _____

ESTABLISHED BY:

APPROVED BY

DATE

REFERENCED BY:

DATE

Elmo D Dockery

Nov. 10, 1976

**CORNER RECORD
WARRICK COUNTY**

DESCRIPTION :

SE CORNER SW¹/₄

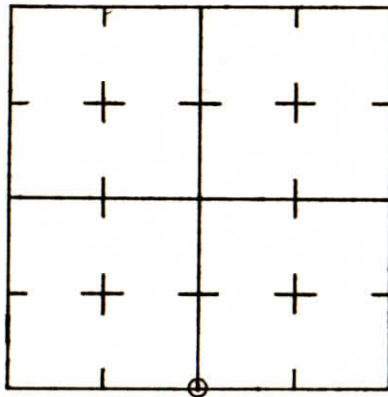
SECTION 36, T. 6 S. R. 9 W.

2nd PRINCIPLE MERIDIAN

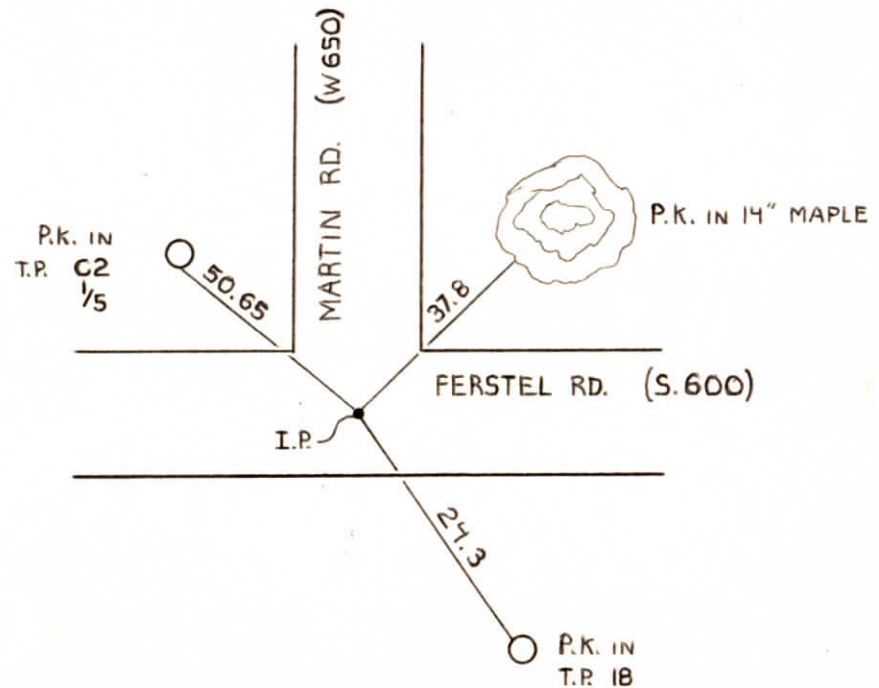
**WARRICK COUNTY SURVEYOR
MICHAEL IRVIN**



INDICATE CORNER REFERENCED



DESCRIBE CORNER REFERENCED



STATE PLANE COORDINATE DATA

INDIANA ZONE: WEST

X _____

Y _____

ESTABLISHED BY:

APPROVED BY

DATE
6/18/73

REFERENCED BY:

DATE


000028

~~SE cor SW $\frac{1}{4}$ & SW cor SE $\frac{1}{4}$ sec 36-65-9W~~
~~NE cor NW $\frac{1}{4}$ & NW cor NE $\frac{1}{4}$ sec 1-75-9W~~

Type of Monument: I.P. (existing)

Date referenced: 6/18/73

referenced by: SWC



CORNER RECORD
WARRICK COUNTY



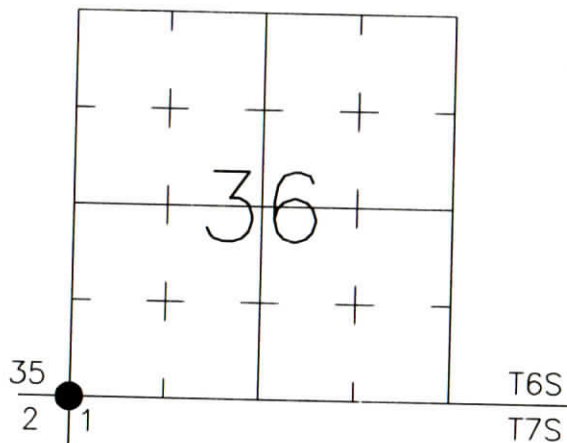
DESCRIPTION:

SOUTHWEST CORNER

SECTION 36, T. 6 S., R. 9 W.
2nd PRINCIPLE MERIDIAN

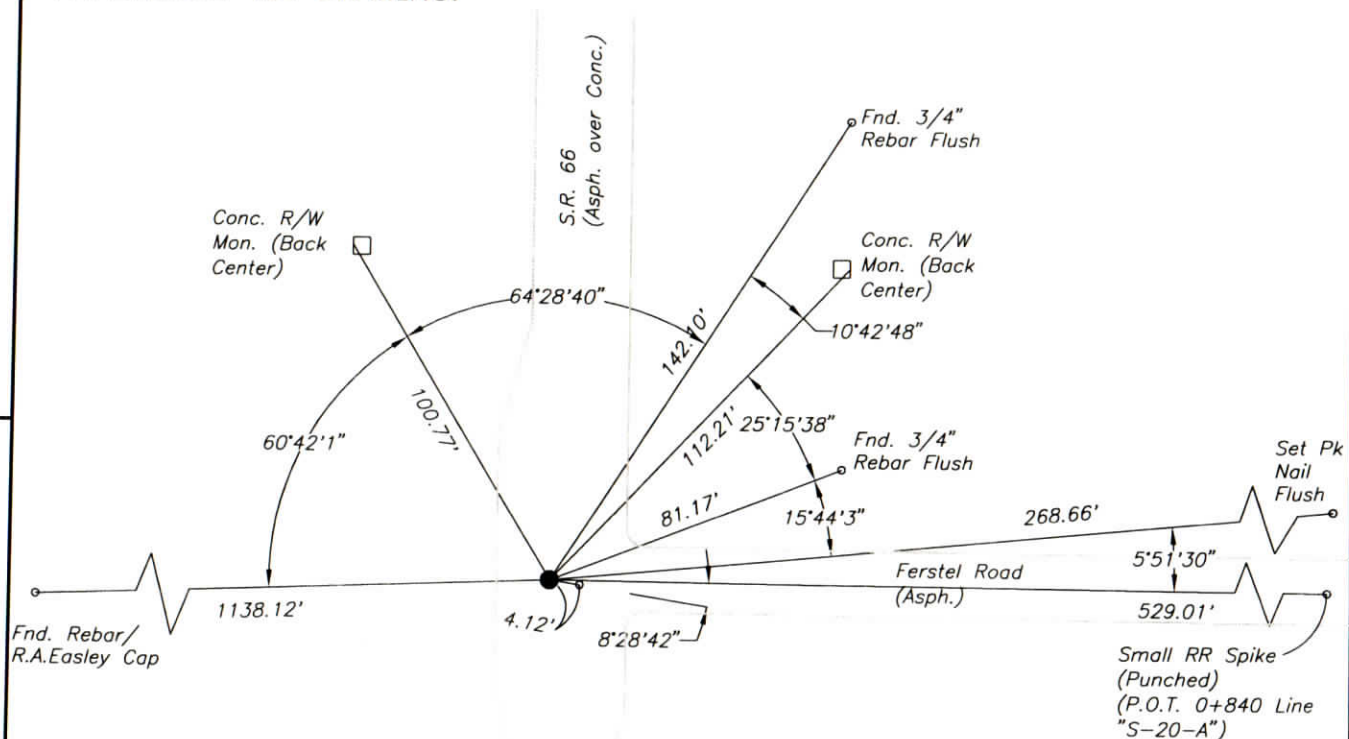
WARRICK COUNTY SURVEYOR
KARAN HARGRAVE-BARNHILL

INDICATE CORNER REFERENCED:



MONUMENT TYPE: BRASS PLUG IN CONC. PVMT.
SIZE: 1" DIA.
DEPTH/HEIGHT: 5" BELOW ASPH. GRADE
REFERENCE TIE DRAWING:

FOR NOTES ON CORNER HISTORY SEE REVERSE.



STATE PLANE COORDINATE DATA:
INDIANA WEST ZONE, NAD 83 (1997)
U.S. SURVEY FEET

X _____

Y _____

COORDINATES ESTABLISHED BY:

APPROVED BY:

DATE:

REFERENCED BY: D.DREES/C.BINKLEY

DATE: 8/28/02

APPROVED BY: P.JONES, RLS#9600016

DATE: 8/29/02

CORNER FILE CODE:
T6S-R9W-Z-21

CORNER HISTORY:

CORNER FILE CODE:
T6S-R9W-Z-21

ORIGINAL USPLS SURVEY: Corner established by Jacob Fowler, Dec. 14, 1805 "Post".

COUNTY SURVEYOR'S BOOKS: Book 1 P. 18: Isaac Adams WCS May 5, 1853 "Stone".

Book 3 P. 249: G.M. Emmerson Dep. WCS March 9, 1920 "Stone" (Syc. 24 S70E 69L, Stone N70E 70L).

Book 3 P. 283: B.C.Samples WCS Feb. 25, 1932 "No corner found".

OTHER SURVEYS AND PLATS: "Corner Code System" card shows an undated notation of "IP 4' west of centerline" and a reference for a brass plug as taken from the plat of Old Stone House Estates. "Corner Record" card shows a reference to a brass plug as taken from the 1977 plat of Whispering Hills Subdivision Sec. "B". plug as taken from the plat of Old Stone House Estates.

Road plans for SR 66, INDOT (State Hwy. Comm.) Proj. 174(1) 1954, give a station and offset to the section corner (do not identify a found monument) being 15' W of the proposed centerline, and call for a Type B Monument to be set.

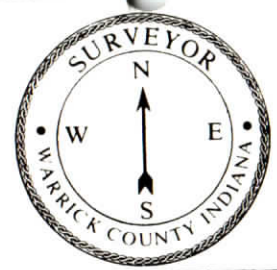
A brass plug is shown as the corner on the 1973 plat of Clifmeere and the 1977 plat of Whispering Hills Subdivision Section "A".

Location Control Route Survey for SR 66 (Doc. 1997R-007360) (section corner ties performed in 1991); a brass plug in concrete pavement was found approximately 4' west of centerline. This offset agrees with the "Corner Code System" cards but not the old road plans.

VERIFICATION OF CORNER POSITION: August, 2002: The brass plug shown was tied to lot corners of Lots 1 and 35 in Whispering Hills Subdivision Section "A". Measured dimensions were reasonably consistent with plat dimensions (generally within 0.1').

COMMENTS/RECOMMENDATIONS: Upcoming construction along S.R. 66 will likely involve the replacement of this monument.
Perry E. Jones 8/29/02

CORNER RECORD
WARRICK COUNTY



DESCRIPTION :

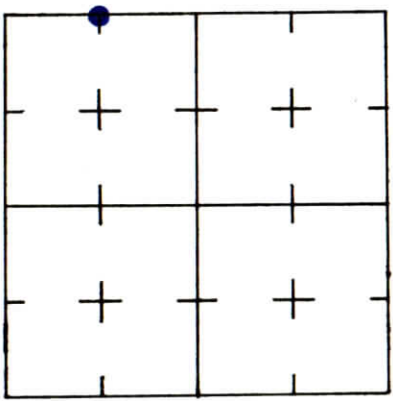
NE CORNER North 1/4 1/4

SECTION 36, T. 6 S. R. 9 W.

2nd PRINCIPLE MERIDIAN

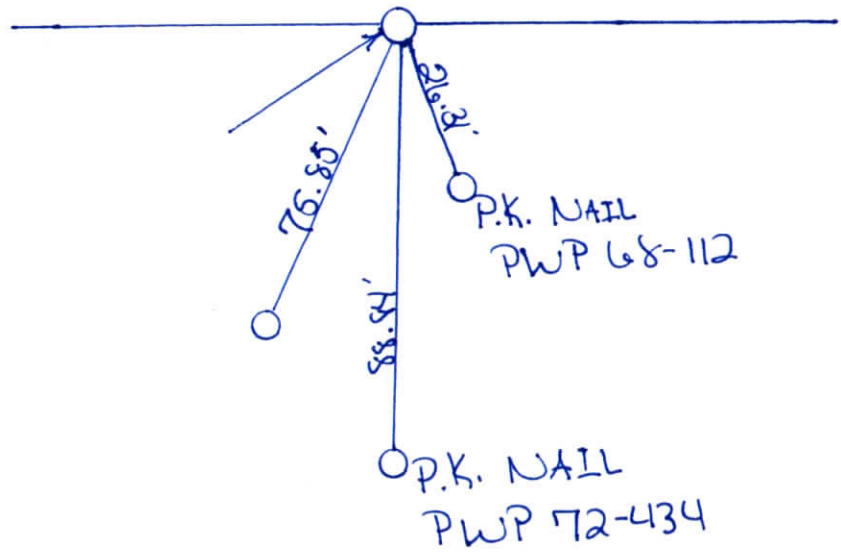
WARRICK COUNTY SURVEYOR
KARAN HARGRAVE-BARNHILL

INDICATE CORNER REFERENCED



DESCRIBE CORNER REFERENCED

HERITAGE PLACE (5th Addition)



STATE PLANE COORDINATE DATA

INDIANA ZONE: WEST

X _____

Y _____

ESTABLISHED BY:

APPROVED BY

DATE

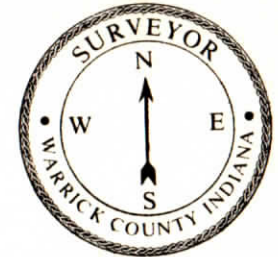
REFERENCED BY:

DATE

MICHAEL F. FELDRUSCH

10-28-86

CORNER RECORD
WARRICK COUNTY



DESCRIPTION:

SW CORNER SE 1/4 NE 1/4

SECTION 36, T. 6 S. R. 9 W.

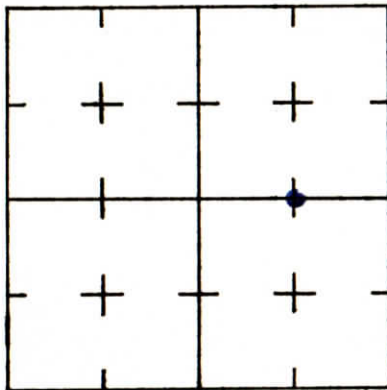
2nd PRINCIPLE MERIDIAN

Royal Highlands Sub

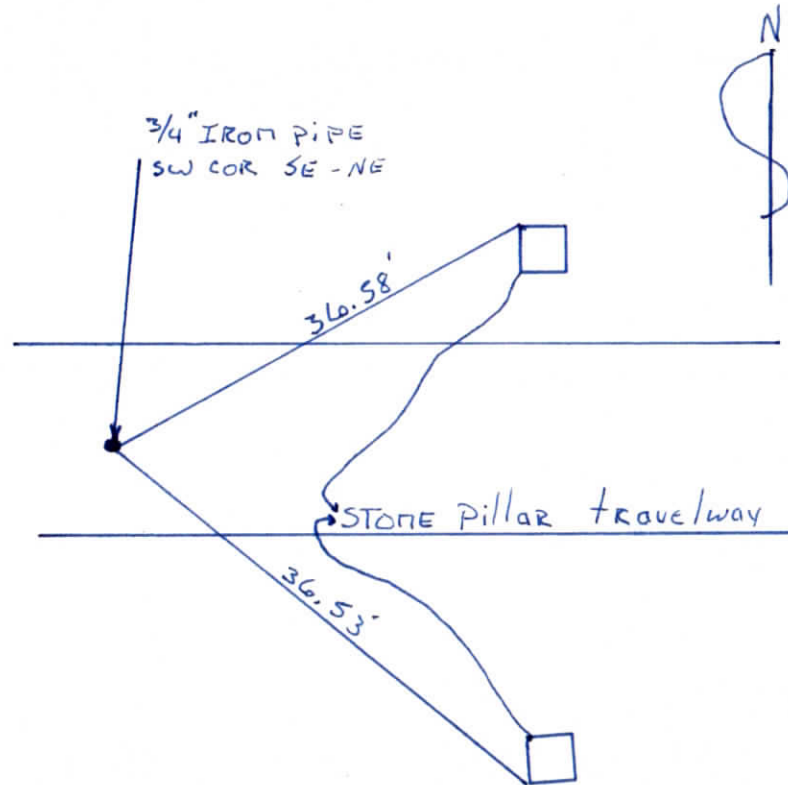
WARRICK COUNTY SURVEYOR

MICHAEL IRVIN

INDICATE CORNER REFERENCED



DESCRIBE CORNER REFERENCED



STATE PLANE COORDINATE DATA

INDIANA ZONE: WEST

X _____

Y _____

ESTABLISHED BY:

APPROVED BY

DATE

REFERENCED BY:

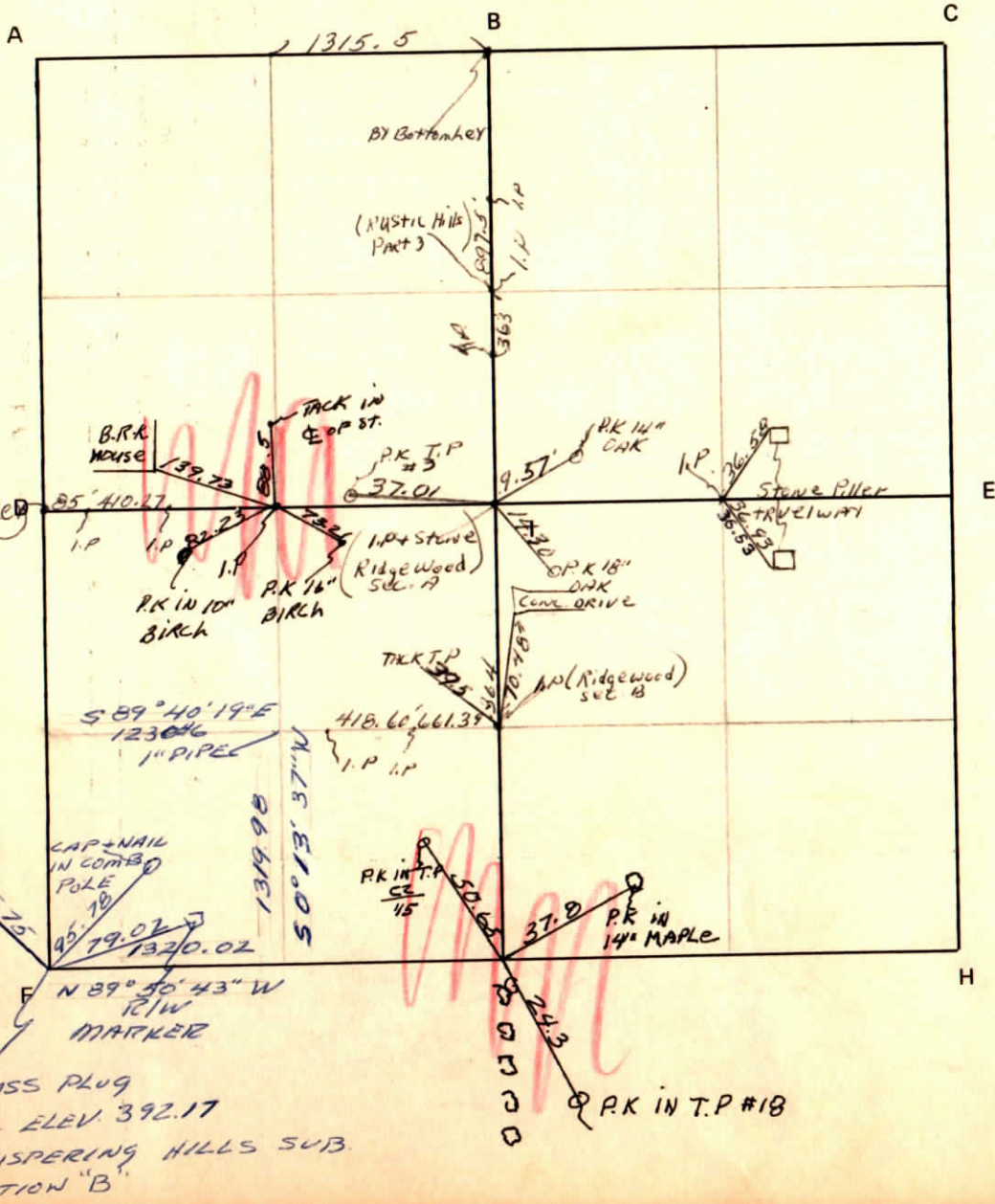
DATE

Elmo A Dockery

April 14, 1976.

CORNER CODE SYSTEM
Warrick County

NOTES



RECORD OF SECTION CORNERS

Warrick County

Section 36 Township 6 South Range 9 West 2nd Principle Meridian

Date	Cor	Description of		Distance from Corner	Azimuth from Corner (North Assumed)	Cond	Check By	Remarks
		Monument	Reference					
6/18/73	A G	iron pin	1)pk in T.P. c2 175	50.65				SWC
	B		2)pk in 14" Maple	37.8				
10/22/73			3)PK in TP 18	24.3				SWC
8/9/74	C	iron pin	1)BR. house	61.93				Elmo Dockery
			2)BR. House	83.85				Windsong East
	D		3)pk pwp #71- 28	14.07				sec. A nwc. sw 1/4 SW 1/4
	E							
	F							
	G							
	H							
	I							