



# RECORD OF SECTION CORNERS

Warrick County

Section 28 Township 6 South Range 9 West 2nd Principle Meridian

Date	Cor	Location	Description of		Distance from Corner	Bearing from Corner (North Assumed)	Cond	Check By	Remarks
			Monument	Reference					
	A								
	B								
	C								
6-6-73 & 7-15-74	D	SW cor. NW $\frac{1}{4}$	7/8" re-bar	1) PK nail 2) Post 3) Post 4) Post	36.75' 36.7' 46.9' 31.0'	N 44° E S 26° E S 52° W N 71° W	good	GAT	Found in place In FWP # Z85148 Post of STOP sign Post of CABLE sign Post of MAIL box
6-18-73	E	SE cor. NE $\frac{1}{4}$	1" iron pipe	1) Post 2) PK nail 3) PK nail 4) PK nail	59.4' 39.03' 60.72' 80.51'	N 76° E S 64° E S 72° W N 80° W	good	GAT	Found in place Post of STOP sign In FWP # 66546 In tele pole # 41275S In FWP # Z85130
7-9-73 & 7-23-74	F	SW cor. SW $\frac{1}{4}$	7/8" re-bar & 1/2" rod	<del>1) Post</del> 2) Post NORA	<del>34.9'</del> 34.9'	<del>N 71° E</del> S 37° W	good	GAT	Found in place <del>Post of STOP sign</del> Post of SURVEY MARKER
7-9-73 & 7-26-74	G	SE cor. SW $\frac{1}{4}$	2" iron pipe (decay- ing wooden post in 6" tile 0.4' West)	1) iron pipe 2) PK nail 3) PK nail	21.0' 98.8' 26.39'	N 00° S 79° E S 19° W	good	GAT	Found in place 1-3/4" lot pin In FWP # D8 In post of WATER marker

CORNER RECORD  
WARRICK COUNTY

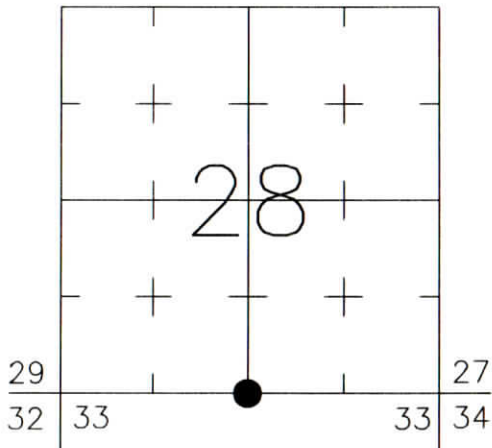


DESCRIPTION:  
SOUTHWEST CORNER SOUTHEAST QUARTER  
SECTION 28, T. 6 S., R. 9 W.  
2nd PRINCIPLE MERIDIAN

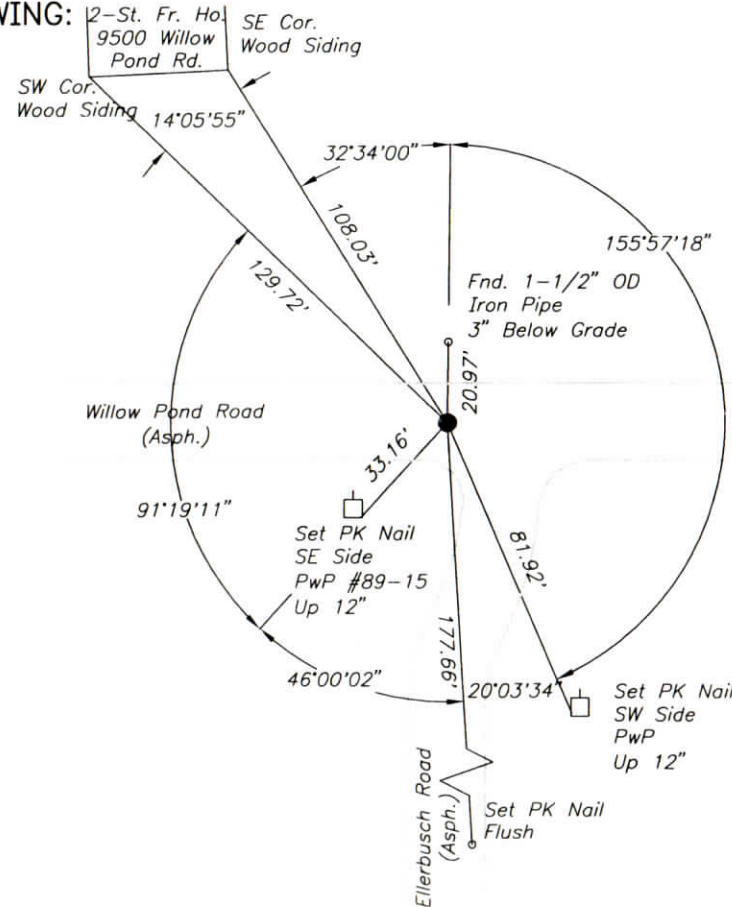
WARRICK COUNTY SURVEYOR  
KARAN HARGRAVE-BARNHILL

FOR NOTES ON CORNER HISTORY SEE REVERSE.

INDICATE CORNER REFERENCED:



MONUMENT TYPE: REBAR  
SIZE: 5/8" DIA.  
DEPTH/HEIGHT: 7" BELOW PVMT. GRADE  
REFERENCE TIE DRAWING:



STATE PLANE COORDINATE DATA:  
INDIANA WEST ZONE, NAD 83 (1997)  
U.S. SURVEY FEET

X ---

Y ---

COORDINATES ESTABLISHED BY:

APPROVED BY:

DATE:

REFERENCED BY: R.HAHN/K.KLEIN

DATE: 9/5/02

APPROVED BY: P.JONES, RLS#9600016

DATE: 9/11/02

CORNER FILE CODE:  
T6S-R9W-V-11

CORNER HISTORY:

CORNER FILE CODE:  
T6S-R9W-V-11

ORIGINAL USPLS SURVEY: Corner established by Jacob Fowler, Dec. 19, 1805 "In Pond" (probably not set).

COUNTY SURVEYOR'S BOOKS: Book 1 P. 208 F.L.Davis WCS Sept. 1, 1864 (Mon. not identified).

Book 3 P. 141: Louis Meyer WCS Nov. 10, 1909 "Old Corner".

Book 3 P. 265 B.C.Samples Surveyor Aug. 27, 1929 "Corner Stone found in place 3-1/2' under road" (6" tile on top, 36" map. 23' WSW, 36" syc. 31' WNW, Cor. Post 14' N).

OTHER SURVEYS AND PLATS: "Corner Record" card shows a 1973 reference (monument not identified).

A 5/8" rebar 3" below grade, was tied in on the Lincoln Ave. Route Survey (Bernardin-Lochmueller & Assoc. 1990, unrecorded).

A plat of survey by Steven A. Sherwood (Doc. 2001-008743) shows a 5/8" iron rod 7" below grade.

VERIFICATION OF CORNER POSITION: September, 2002: The 5/8" rebar shown was found in place, the size and depth being consistent with the 2001 Steven Sherwood survey. None of the reference objects shown on the 1973 Corner Record card were found; a pipe was found 20.97' north of the rebar, where the 1973 reference showed a 5/8" rebar being 20.00' north.

Perry E. Jones 9/11/02



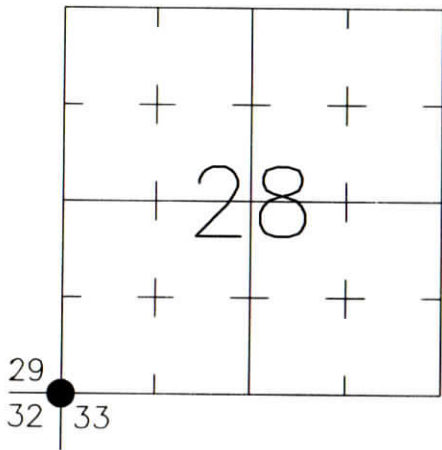
CORNER RECORD  
WARRICK COUNTY



DESCRIPTION:  
SOUTHWEST CORNER \_\_\_\_\_  
SECTION 28, T. 6 S., R. 9 W.  
2nd PRINCIPLE MERIDIAN

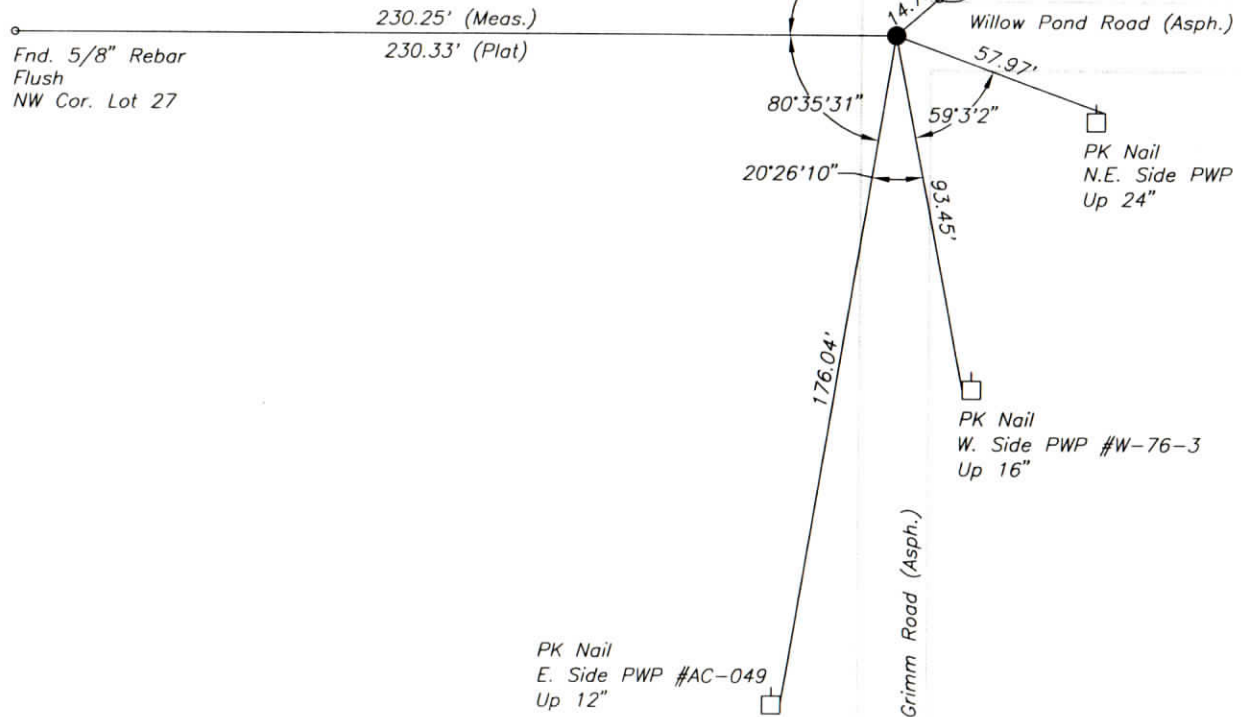
WARRICK COUNTY SURVEYOR  
KARAN HARGRAVE-BARNHILL

INDICATE CORNER REFERENCED:



MONUMENT TYPE: REBAR  
SIZE: 1/2" DIA.  
DEPTH/HEIGHT: 5" BELOW PVMT. GRADE  
REFERENCE TIE DRAWING:

FOR NOTES ON CORNER HISTORY SEE REVERSE.



STATE PLANE COORDINATE DATA:  
INDIANA WEST ZONE, NAD 83 (1997)  
U.S. SURVEY FEET

X \_\_\_\_\_  
Y \_\_\_\_\_

COORDINATES ESTABLISHED BY:

APPROVED BY:

DATE:

REFERENCED BY: K.KLEIN/M.BURRESS

DATE: 8/29/02

APPROVED BY: P.JONES, RLS#9600016

DATE: 9/12/02

CORNER FILE CODE:  
T6S-R9W-V-09

CORNER HISTORY:

CORNER FILE CODE:  
T6S-R9W-V-09

ORIGINAL USPLS SURVEY: Corner established by Jacob Fowler, Dec. 19, 1805 "Post".

COUNTY SURVEYOR'S BOOKS: Book 1 P. 57: W.B. Wright WCS November, 1855 (Not identified, Stone presumed).

Book 1 P. 112: John C. Frary WCS Feb. 1859 "Estab. By Wright".

Book 1 P. 208: F.L. Davis WCS Sept. 1, 1864 "Stone marked SW S 28".

OTHER SURVEYS AND PLATS: "Corner Record" card shows 1983 reference to a 1/2" IP 14" deep (in gravel).

A 5/8" rebar 10" below (crushed stone) road grade, was tied in on the Lincoln Ave. Route Survey (Bernardin-Lochmueller & Assoc. 1990, unrecorded).

The plat of Kenosha Hills Section C Phase VII (Doc. 1998R-010453) ties to a found iron pin.

VERIFICATION OF CORNER POSITION: August, 2002: The 1/2" rebar shown was found in place, reasonably consistent with the 1983 Corner Record card reference ties and with ties obtained on the 1990 Lincoln Avenue survey. The measured distance to the northwest corner of Lot 27 of Kenosha Hills Section C Phase VII checked within 0.08' of the platted dimension.

Perry E. Jones 9/12/02

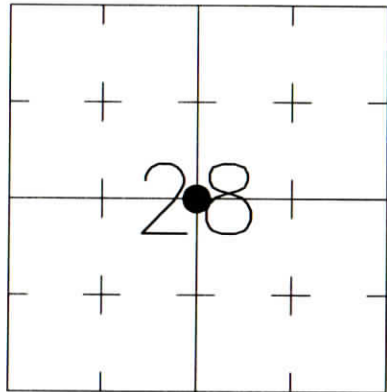
CORNER RECORD  
WARRICK COUNTY



DESCRIPTION:  
SOUTHWEST CORNER NORTHEAST QUARTER  
SECTION 28, T. 6 S., R. 9 W.  
2nd PRINCIPLE MERIDIAN

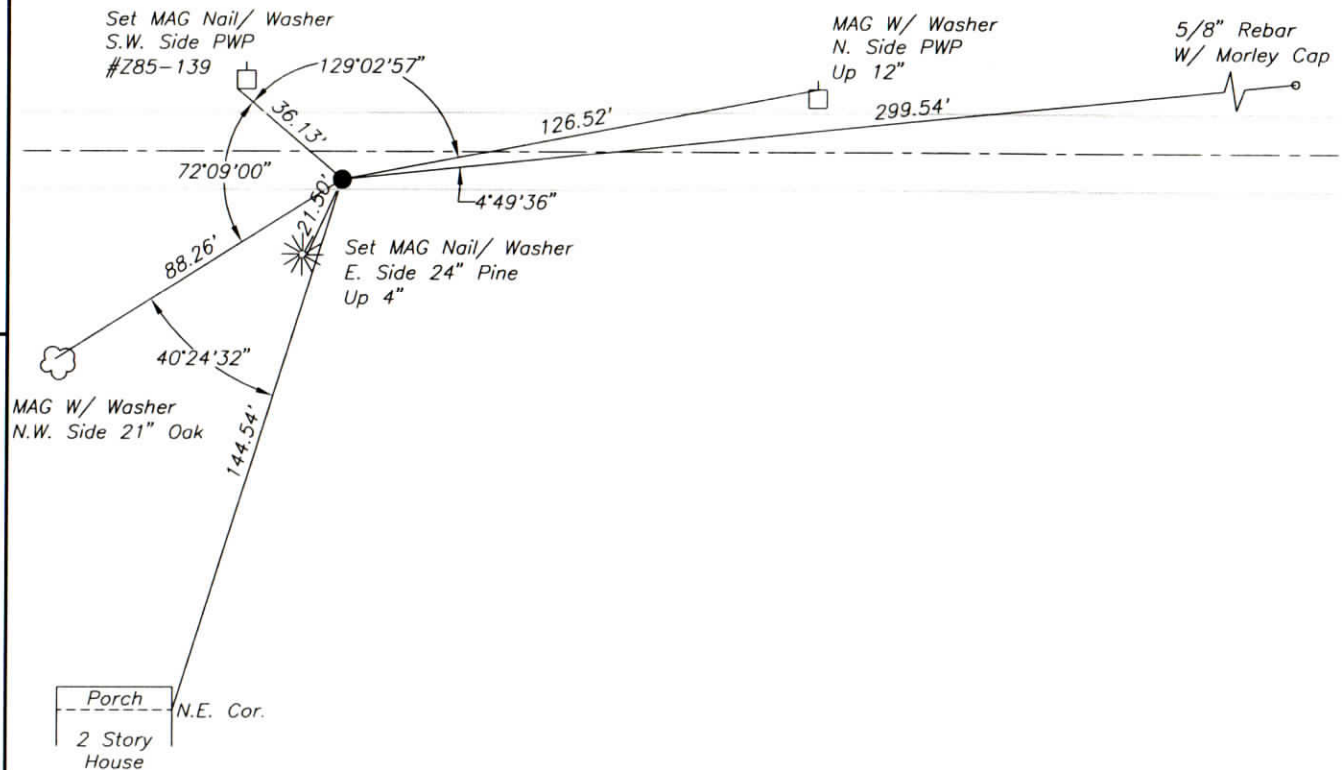
WARRICK COUNTY SURVEYOR  
KARAN HARGRAVE-BARNHILL

INDICATE CORNER REFERENCED:



MONUMENT TYPE: REBAR  
SIZE: 5/8" DIA.  
DEPTH/HEIGHT: 4" BELOW PVMT. GRADE  
REFERENCE TIE DRAWING:

FOR NOTES ON CORNER HISTORY SEE REVERSE.



STATE PLANE COORDINATE DATA:  
INDIANA WEST ZONE, NAD 83 (1997)  
U.S. SURVEY FEET

X \_\_\_\_\_

Y \_\_\_\_\_

COORDINATES ESTABLISHED BY:

APPROVED BY:

DATE:

REFERENCED BY: D.DREES/C.BINKLEY

DATE: 9/3/02

APPROVED BY: P.JONES, RLS#9600016

DATE: 9/26/02

CORNER FILE CODE:  
T6S-R9W-T-11

CORNER HISTORY:

CORNER FILE CODE:  
T6S-R9W-T-11

ORIGINAL USPLS SURVEY: (Center of Section not monumented by USPLS Survey)

COUNTY SURVEYOR'S BOOKS: Book 1 P. 208 F.L.Davis WCS Sept. 1, 1864 (Mon. not identified)

OTHER SURVEYS AND PLATS: "Corner Record" card shows a 1983 reference to a 5/8" IP.

Lincoln Ave. Route Survey (Bernardin-Lochmueller & Assoc. 1990, unrecorded) tied in and referenced a 5/8" iron pin 4" below grade.

A plat of survey by Steven A. Sherwood (Doc. 2001-008743) shows a 5/8" iron rod 4" below grade.

VERIFICATION OF CORNER POSITION: September, 2002: The 5/8" rebar shown was found in place, the size and depth being consistent with the 2001 Steven Sherwood survey, and reference ties consistent with the 1983 Corner Record card reference.

Perry E. Jones 9/26/02



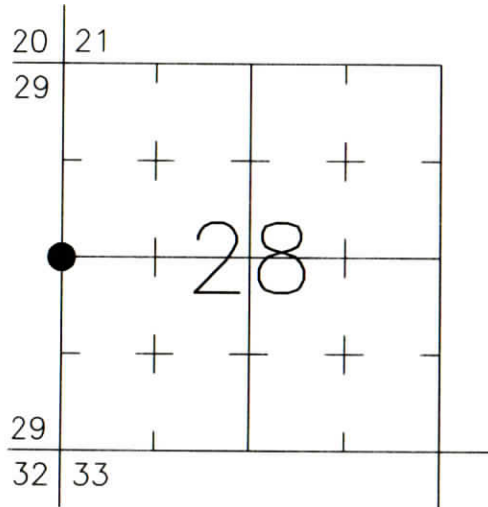
# CORNER RECORD WARRICK COUNTY



DESCRIPTION:  
SOUTHWEST CORNER NORTHWEST QUARTER  
SECTION 28, T. 6 S., R. 9 W.  
 2nd PRINCIPLE MERIDIAN

**WARRICK COUNTY SURVEYOR**  
 KARAN HARGRAVE-BARNHILL

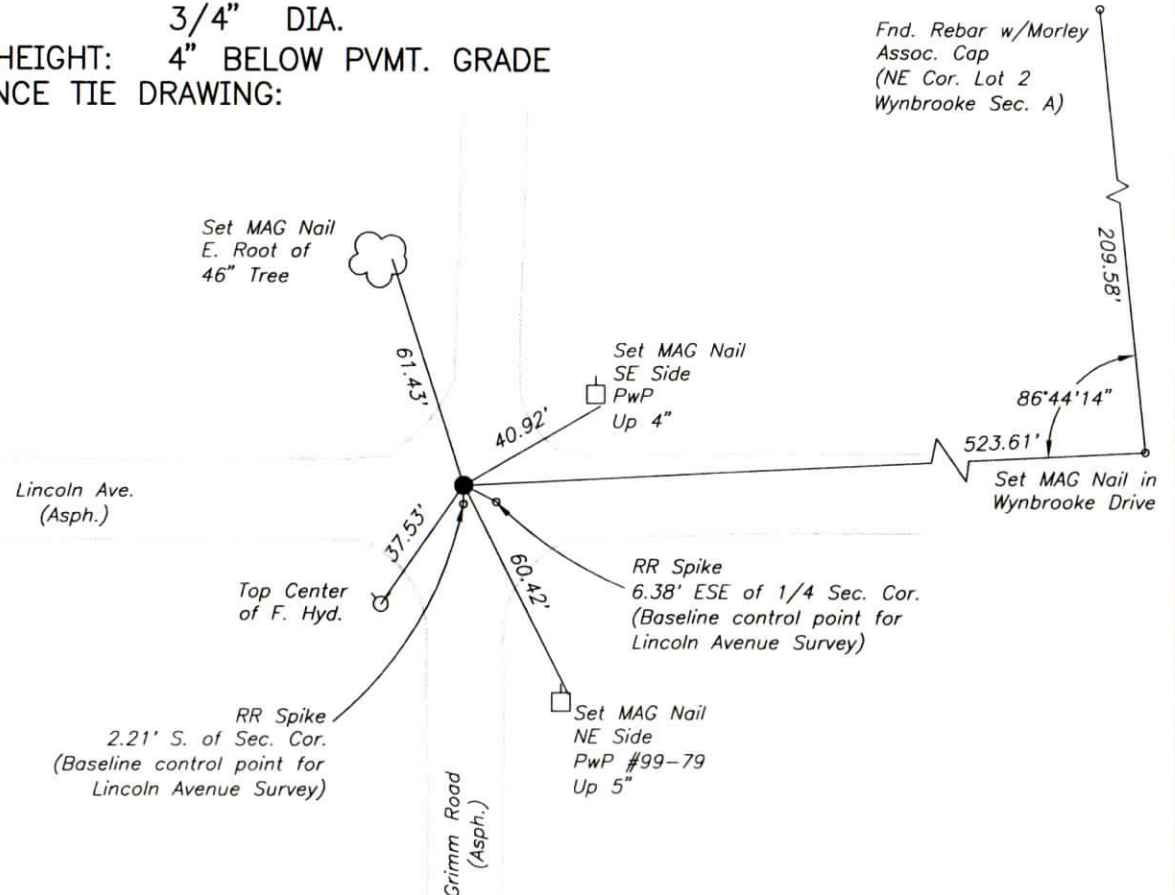
INDICATE CORNER REFERENCED:



MONUMENT TYPE: IRON PIN  
 SIZE: 3/4" DIA.  
 DEPTH/HEIGHT: 4" BELOW PVMT. GRADE  
 REFERENCE TIE DRAWING:

FOR NOTES ON CORNER HISTORY SEE REVERSE.

*Fnd. Rebar w/Morley  
 Assoc. Cap  
 (NE Cor. Lot 2  
 Wynbrooke Sec. A)*



STATE PLANE COORDINATE DATA:  
 INDIANA WEST ZONE, NAD 83 (1997)  
 U.S. SURVEY FEET

X \_\_\_\_\_

Y \_\_\_\_\_

COORDINATES ESTABLISHED BY:

APPROVED BY:

DATE:

REFERENCED BY: D.DREES/C.BINKLEY  
 /J.CRANE  
 APPROVED BY: P.JONES, RLS#9600016

DATE: 2/13/03

DATE: 3/13/03

CORNER FILE CODE:  
 T6S-R9W-T-09

CORNER HISTORY:

CORNER FILE CODE:  
T6S-R9W-T-09

ORIGINAL USPLS SURVEY: Corner established by Jacob Fowler, Dec. 19, 1805 "Post".

COUNTY SURVEYOR'S BOOKS: Book 1 P. 57: W.B. Wright WCS November, 1855 (Not identified, Stone presumed).

Book 1 P. 208: F.L.Davis WCS Sept. 1, 1864 (Mon. not identified).

Book 4 P. 95: C. Warren Abbott WCS 1946 "Set 1-1/2" iron pipe 4" long".

OTHER SURVEYS AND PLATS: "Corner Record" card shows a 1983 reference to a 5/8" IP 6" deep.

Lincoln Ave. Route Survey (Bernardin-Lochmueller & Assoc. 1990, unrecorded) tied in and referenced a 3/4" iron pin 4" below grade.

The 2002 plat of Wynbrooke Section A shows ties to a mag nail found flush.

VERIFICATION OF CORNER POSITION: March, 2003; the MAG nail shown on the Wynbrooke Section A plat was found, its position referenced, and removed. The 3/4" iron pin shown was uncovered and found to vertically beneath the MAG nail's position. Ties were made to lot corner monuments in Wynbrook Section A which matched plat dimensions within 0.07 feet.

Perry E. Jones 3/12/03

CORNER RECORD  
WARRICK COUNTY

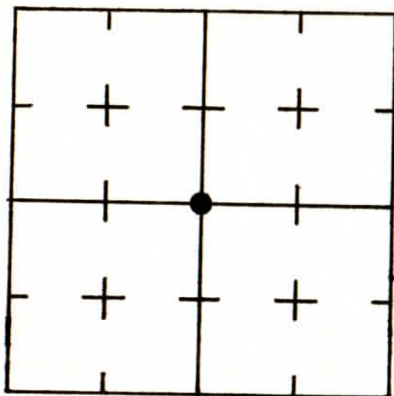
DESCRIPTION: ~~CENTER OF SEC.~~  
SE CORNER SE 1/4 NW 1/4

SECTION 28, T. 6 S. R. 9 W.  
2<sup>nd</sup> PRINCIPAL MERIDIAN

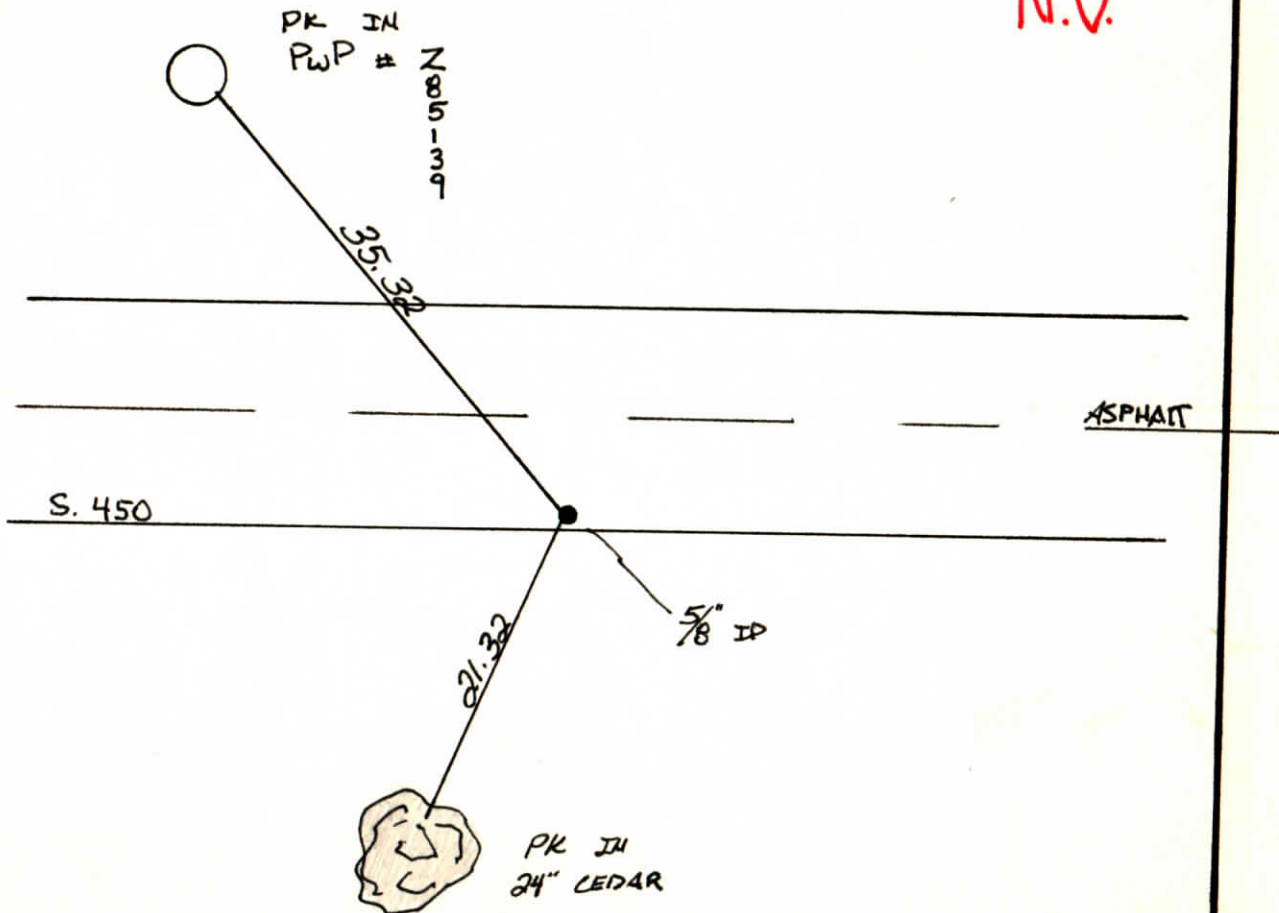
WARRICK COUNTY SURVEYOR  
MICHAEL F. FELDBUSCH, L.S.



INDICATE CORNER REFERENCED



DESCRIBE CORNER REFERENCED



N.V.

STATE PLANE COORDINATE DATA

INDIANA ZONE: WEST

X \_\_\_\_\_

Y \_\_\_\_\_

ESTABLISHED BY:  
\_\_\_\_\_

APPROVED BY

DATE

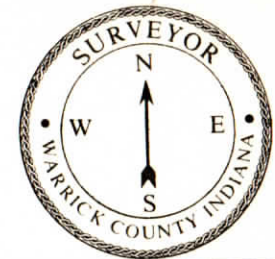
REFERENCED BY:

*Jay Beck*

DATE

5-31-83

CORNER RECORD  
WARRICK COUNTY



DESCRIPTION :

SE CORNER NW1/4 NE1/4

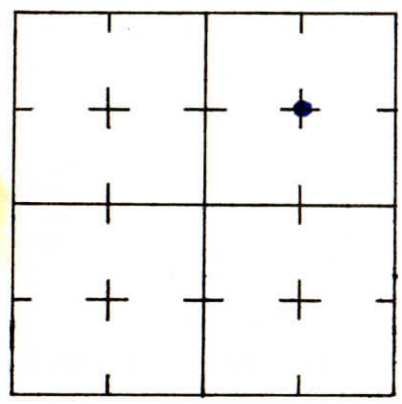
SECTION 28, T. 6 S. R. 9 W.

2<sup>nd</sup> PRINCIPLE MERIDIAN

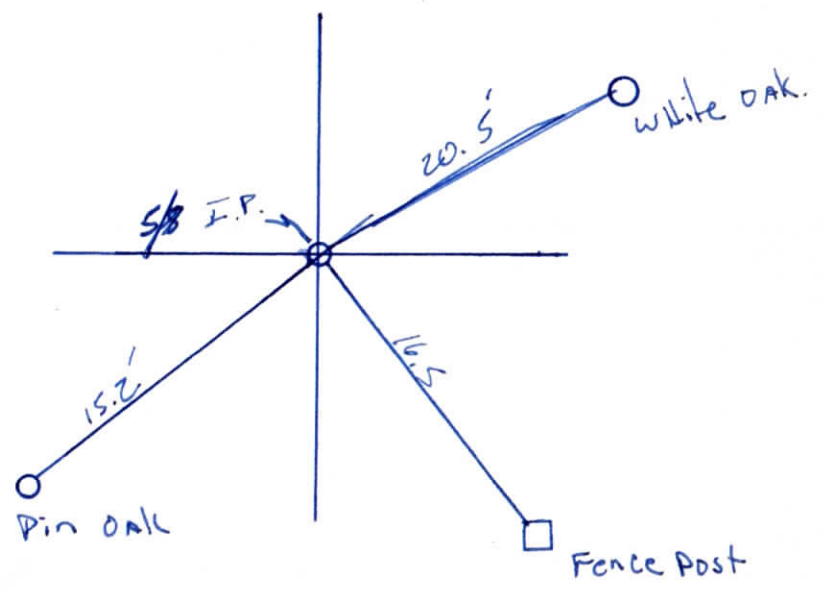
Country Place Estates

WARRICK COUNTY SURVEYOR  
MICHAEL IRVIN

INDICATE CORNER REFERENCED



DESCRIBE CORNER REFERENCED



STATE PLANE COORDINATE DATA

INDIANA ZONE: WEST

X \_\_\_\_\_

Y \_\_\_\_\_

ESTABLISHED BY:

\_\_\_\_\_

APPROVED BY

DATE

REFERENCED BY:

DATE

Richard C. Eicker

Feb 18, 1987



CORNER RECORD  
WARRICK COUNTY

DESCRIPTION :

SW CORNER NW 1/4

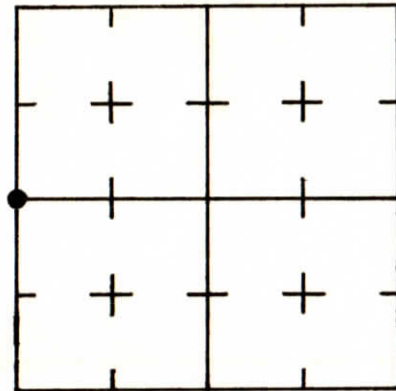
SECTION 28, T. 6 S. R. 9 W.

2<sup>nd</sup> PRINCIPAL MERIDIAN

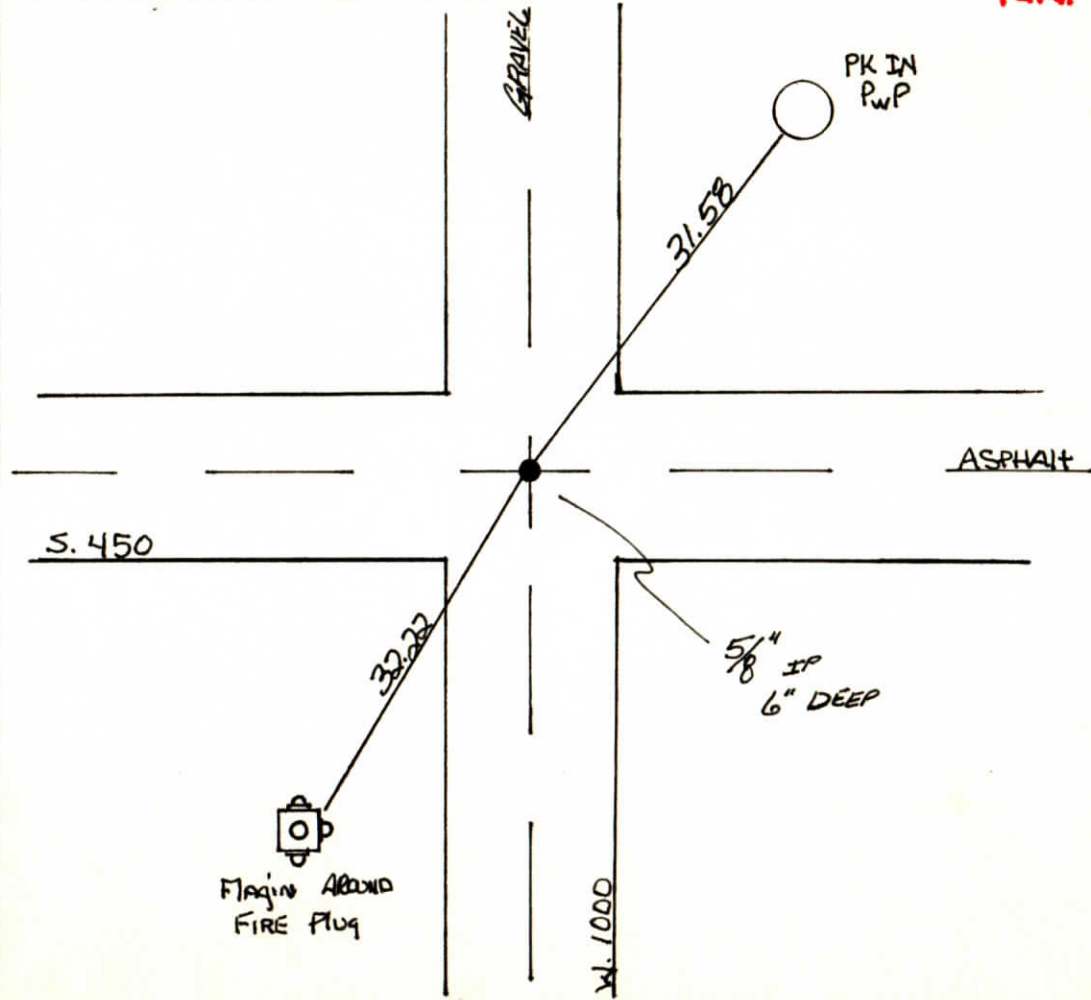
WARRICK COUNTY SURVEYOR  
MICHAEL F. FELDBUSCH, L.S.



INDICATE CORNER REFERENCED



DESCRIBE CORNER REFERENCED



STATE PLANE COORDINATE DATA

INDIANA ZONE: WEST

X \_\_\_\_\_

Y \_\_\_\_\_

ESTABLISHED BY:

\_\_\_\_\_

APPROVED BY

DATE

REFERENCED BY:

DATE

*Ray Beck*

6-1-83

CORNER RECORD  
WARRICK COUNTY

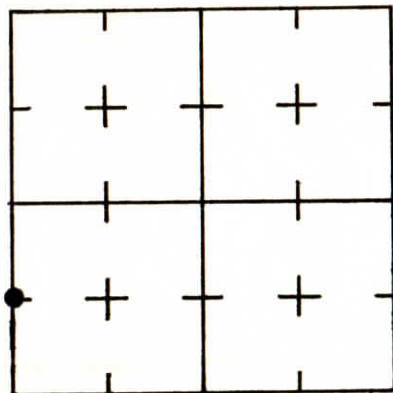
DESCRIPTION:

NW CORNER SW 1/4 SW 1/4  
SECTION 28, T. 6 S. R. 9 W.  
2<sup>nd</sup> PRINCIPAL MERIDIAN

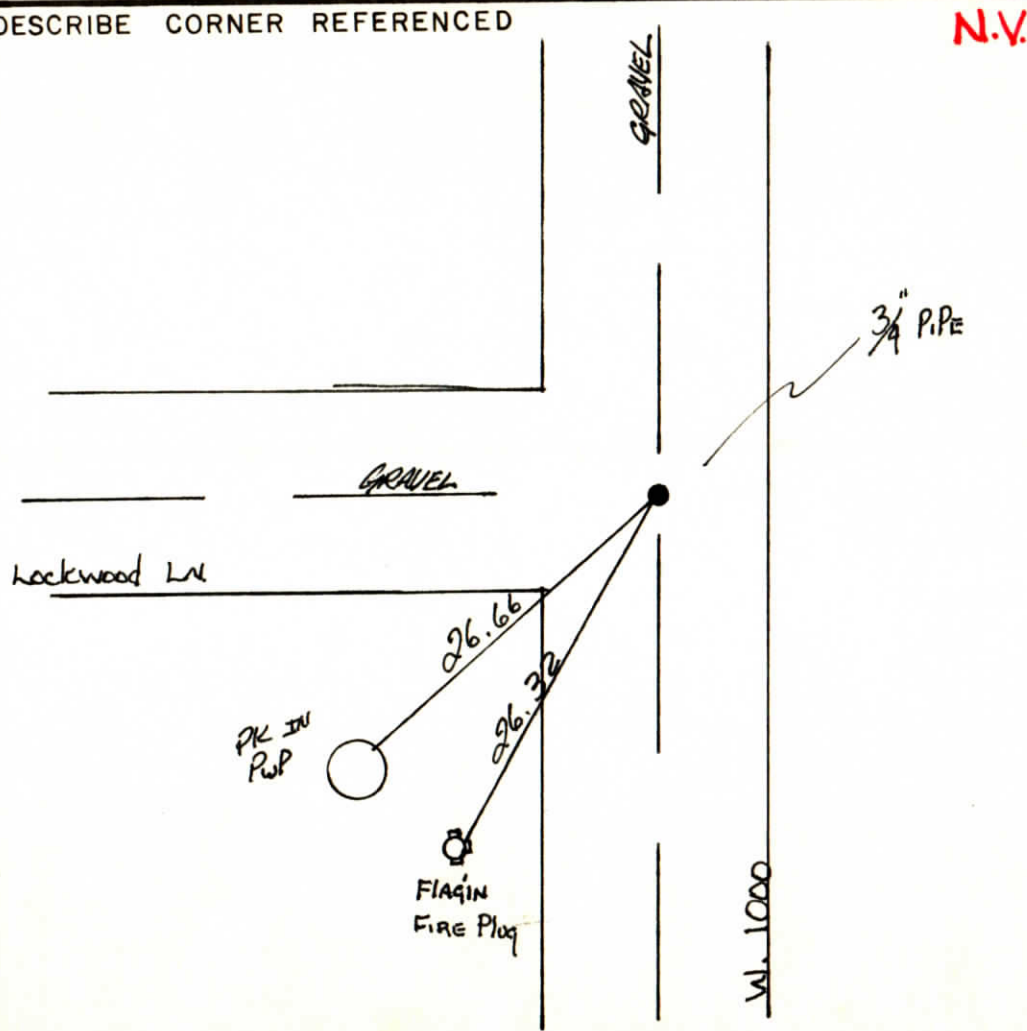
WARRICK COUNTY SURVEYOR  
MICHAEL F. FELDBUSCH, L.S.



INDICATE CORNER REFERENCED



DESCRIBE CORNER REFERENCED



STATE PLANE COORDINATE DATA

INDIANA ZONE: WEST

X \_\_\_\_\_

Y \_\_\_\_\_

ESTABLISHED BY:  
\_\_\_\_\_

APPROVED BY

DATE

REFERENCED BY:

DATE

*Lang Beck*

5-31-83

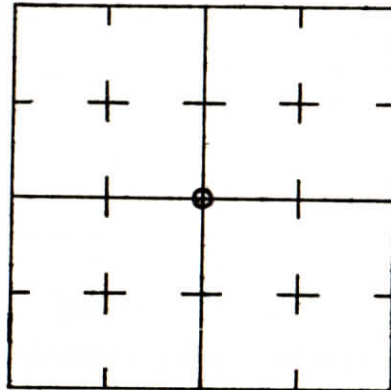
**CORNER RECORD  
WARRICK COUNTY**



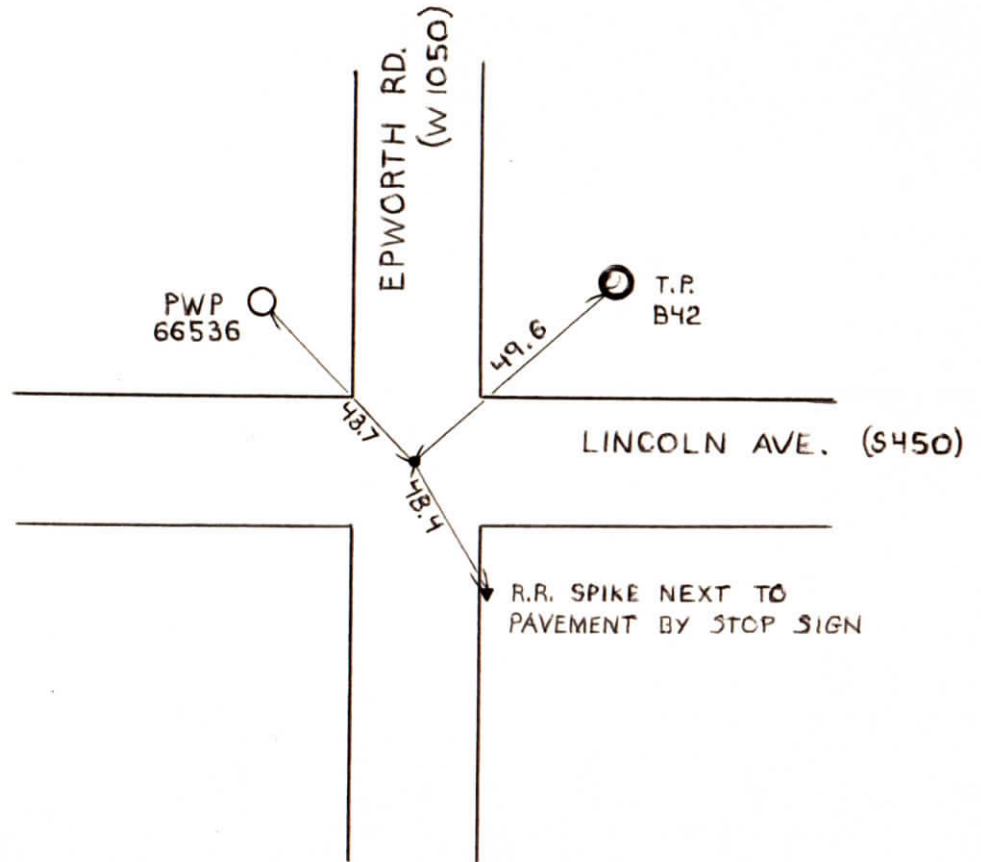
DESCRIPTION:  
SE CORNER NW 1/4  
SECTION 29, T. 6 S. R. 9 W.  
2<sup>nd</sup> PRINCIPLE MERIDIAN

**WARRICK COUNTY SURVEYOR  
MICHAEL IRVIN**

INDICATE CORNER REFERENCED



DESCRIBE CORNER REFERENCED



STATE PLANE COORDINATE DATA

INDIANA ZONE: WEST

X \_\_\_\_\_

Y \_\_\_\_\_

ESTABLISHED BY:  
\_\_\_\_\_

APPROVED BY *NOT VERIFIED*

DATE  
6-6-73

REFERENCED BY:

DATE

~~000000~~

~~SE cor NW 1/4 + SW cor NE 1/4  
NE cor SW 1/4 + NW cor SE 1/4~~  
sec. 29 - 65 - 9w

Type of Monument: I.P. (existing)

Date referenced: 6/6/73

referenced by: SWC

✓  
1/22/74  
1/22/74  
1/22/74



CORNER RECORD  
WARRICK COUNTY



DESCRIPTION:

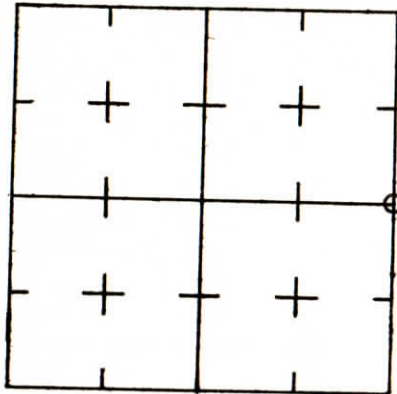
SE CORNER NE<sup>1</sup>/<sub>4</sub>

SECTION 29, T. 6 S. R. 9 W.

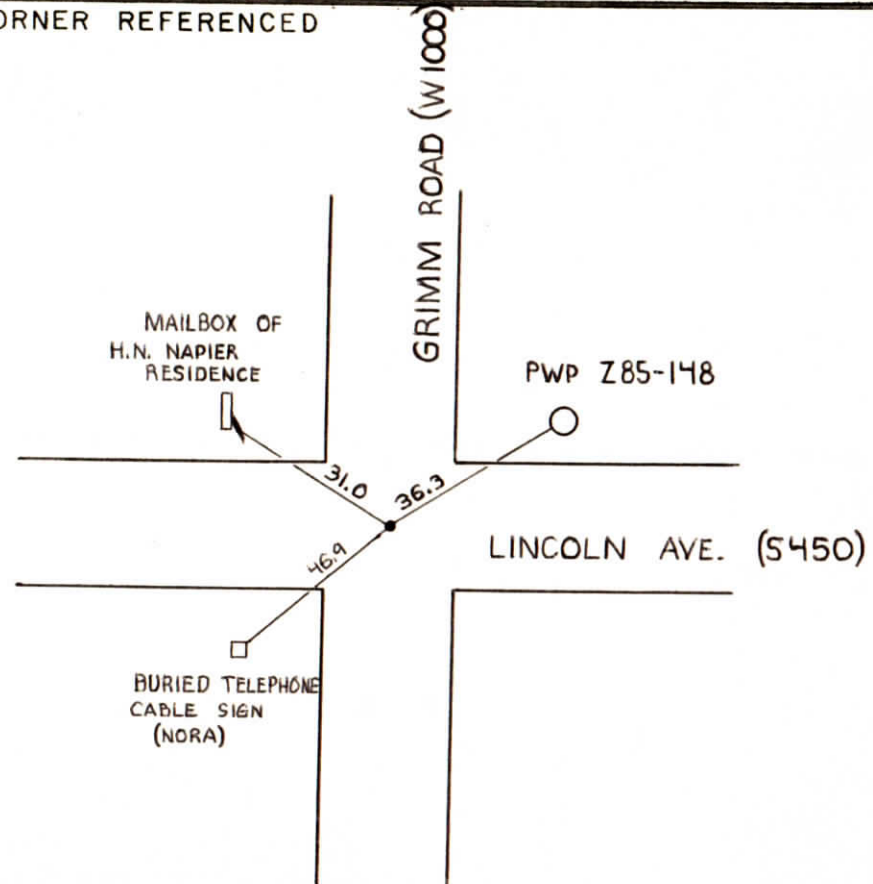
2<sup>nd</sup> PRINCIPLE MERIDIAN

WARRICK COUNTY SURVEYOR  
MICHAEL IRVIN

INDICATE CORNER REFERENCED



DESCRIBE CORNER REFERENCED



STATE PLANE COORDINATE DATA

INDIANA ZONE: WEST

X \_\_\_\_\_

Y \_\_\_\_\_

ESTABLISHED BY:

APPROVED BY NOT VERIFIED

DATE  
6-6-73

REFERENCED BY:

DATE

~~(SE cor NE  $\frac{1}{4}$ ) + NE cor SE  $\frac{1}{4}$  29-6-9~~  
~~SW cor NW  $\frac{1}{4}$  + NW cor SW  $\frac{1}{4}$  28-6-9~~

~~000001~~

Type of Monument: I.P. (existing)

Date referenced: 6/6/73

referenced by: SWC

7-22-74  
JPM



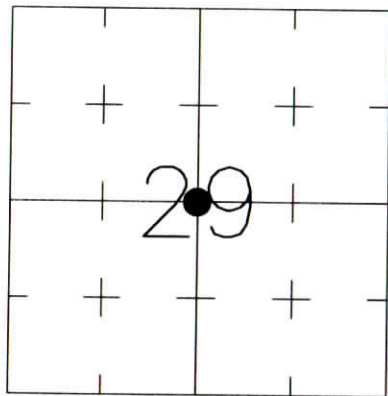
CORNER RECORD  
WARRICK COUNTY



DESCRIPTION:  
SOUTHWEST CORNER NORTHEAST QUARTER  
SECTION 29, T. 6 S., R. 9 W.  
2nd PRINCIPLE MERIDIAN

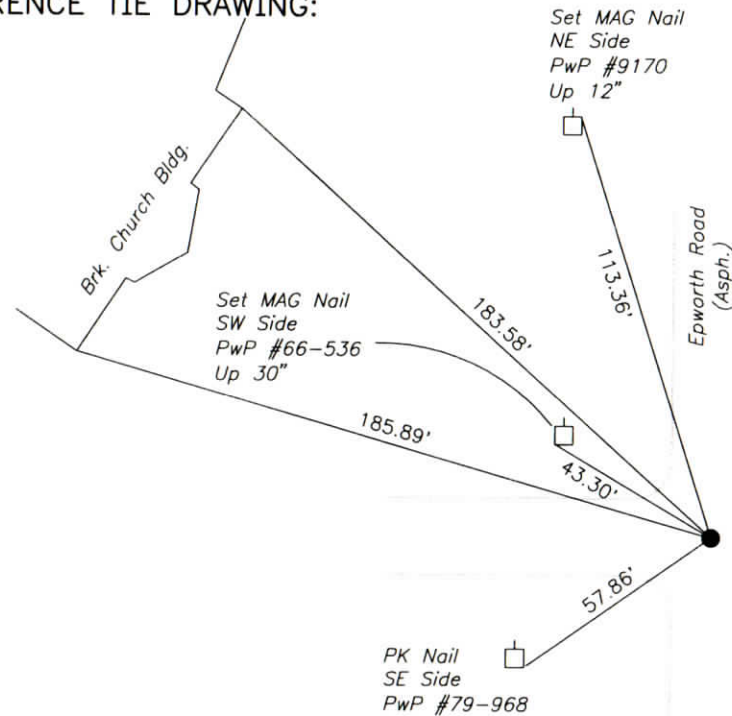
WARRICK COUNTY SURVEYOR  
KARAN HARGRAVE-BARNHILL

INDICATE CORNER REFERENCED:



MONUMENT TYPE: BOLT  
SIZE: 1" SQU.  
DEPTH/HEIGHT: 5" BELOW GRADE  
REFERENCE TIE DRAWING:

FOR NOTES ON CORNER HISTORY SEE REVERSE.



STATE PLANE COORDINATE DATA:  
INDIANA WEST ZONE, NAD 83 (1997)  
U.S. SURVEY FEET

X \_\_\_\_\_

Y \_\_\_\_\_

COORDINATES ESTABLISHED BY:

APPROVED BY:

DATE:

REFERENCED BY: D.DREES/G.M.BURRESS

DATE: 9/3/02

APPROVED BY: P.JONES, RLS#9600016

DATE: 9/27/02

CORNER FILE CODE:  
T6S-R9W-T-07

CORNER HISTORY:

CORNER FILE CODE:  
T6S-R9W-T-07

ORIGINAL USPLS SURVEY: (Center of Section not monumented by USPLS Survey).

COUNTY SURVEYOR'S BOOKS: Book 1 P. 57: W.B. Wright WCS November, 1855 (Mon. not identified, stone presumed).

Book 1 P. 238: O.B.Pasco WCS Nov. 25, 1865 "Stake Set"

Book 3 P. 198: Calvin S. DeWeese WCS Aug. 26, 1927 "Old Stone Found"

OTHER SURVEYS AND PLATS: "Corner Record" cards include a 1973 reference (mon. not identified), a 1991 reference to a 1" square iron pin as taken from the plat of Thornbrook Estates, and a 1993 reference to a 1" square iron pin as taken from the plat of Ashbury Parke Subdivision.

Lincoln Ave. Route Survey (Bernardin-Lochmueller & Assoc. 1990, unrecorded) tied in and referenced a 1" square bolt 4" below grade.

The 1" square bolt (or pin) was found in 1995, and was used in a survey of a tract which became Interstate Office Park (Doc. 2000R-004425).

VERIFICATION OF CORNER POSITION: September, 2002: The 1" square bolt shown was found in place, its position consistent with the 1991 reference from Thornbrooke Estates (+/- 0.1').

Perry E. Jones 9/27/02



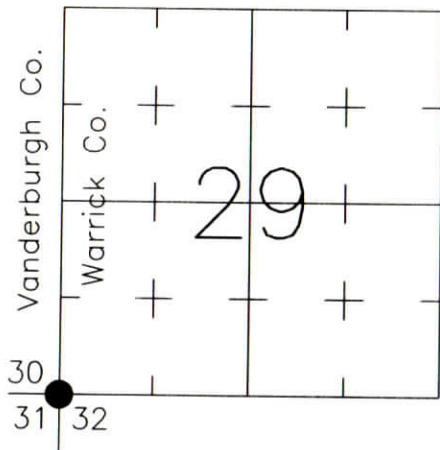
CORNER RECORD  
WARRICK COUNTY



DESCRIPTION:  
SOUTHWEST CORNER \_\_\_\_\_  
SECTION 29, T. 6 S., R. 9 W.  
2nd PRINCIPLE MERIDIAN

WARRICK COUNTY SURVEYOR  
KARAN HARGRAVE-BARNHILL

INDICATE CORNER REFERENCED:



STATE PLANE COORDINATE DATA:  
INDIANA WEST ZONE, NAD 83 (1997)  
U.S. SURVEY FEET

X 2847079.51  
Y 1009877.98

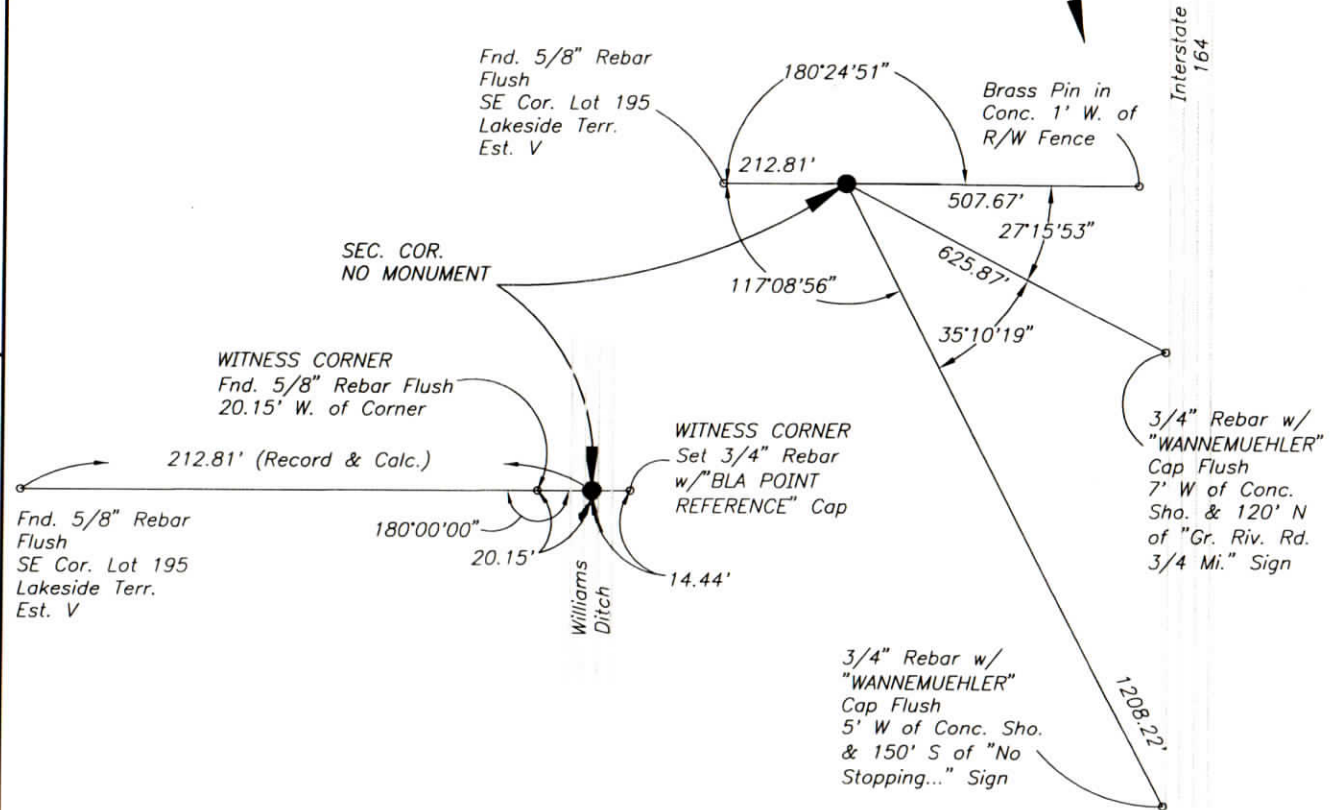
COORDINATES ESTABLISHED BY:  
Douglas G. McDonald, PE LS, Vand. Co.  
Surveyor's Office  
APPROVED BY:

DATE:

MONUMENT TYPE: NO MON. (WITNESS POINTS)  
SIZE:  
DEPTH/HEIGHT:  
REFERENCE TIE DRAWING:

FOR NOTES ON CORNER HISTORY SEE REVERSE.

NOTE: Brg's. & Dist's. to monuments along I-164 were calculated from traverse data and may not be directly visible from the corner.



REFERENCED BY: K.KLEIN/G.M.BURRESS

DATE: 8/27/02

APPROVED BY: P.JONES, RLS#9600016

DATE: 8/30/02

CORNER FILE CODE:  
T6S-R9W-V-05

CORNER HISTORY:

CORNER FILE CODE:  
T6S-R9W-V-05

ORIGINAL USPLS SURVEY: Corner established by Jacob Fowler, Dec. 19, 1805 "Post".

COUNTY SURVEYOR'S BOOKS: Book 1 P. 238: O.B.Pasco WCS Nov. 25, 1865 "Stone Set Marked SW 29, Gov't. witness trees...were gone unless the decaying root of a red oak nearby is one"

Vand. Co. Book C P. 97 Chas. B. Bateman VCS March 29, 1871 "Stone, Old Stone by WCS 69 links West"

OTHER SURVEYS AND PLATS: Vanderburgh County Surveyor's office provided calculated coordinates (dated 2002) based on ties to lot corners in Lakeside Terrace IV, V, and VI (Vand. Co.).

A 1995 survey of a tract which became Interstate Office Park (Doc. 2000R-004425) also used lot corners in Lakeside Terrace to calculate the corner position, which falls in Williams Ditch. Ties to the I-164 centerline, compared to deed descriptions for the I-164 R/W indicate a discrepancy of about 3' in the corner position as used on the I-164 project.

VERIFICATION OF CORNER POSITION: August 2002: The corner position was re-established (but not set) using a rebar found on the west bank of Williams Ditch (for line only) and using the plat distance from a rebar found at southeast corner of Lot 195 of Lakeside Terrace Estates V. This line was projected easterly to the eastern bank of Williams Ditch where a rebar was set as an additional witness. The actual corner falling in the channel of Williams Ditch, and typically under water most of the year, no monument was set at the re-established corner.

Perry E. Jones 8/30/02

# CORNER RECORD WARRICK COUNTY

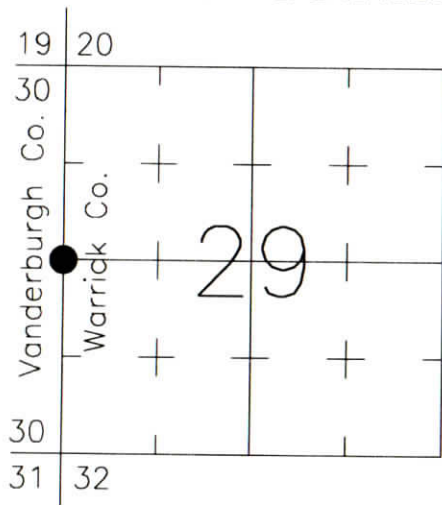


DESCRIPTION:  
SOUTHWEST CORNER NORTHWEST QUARTER  
SECTION 29, T. 6 S., R. 9 W.  
 2nd PRINCIPAL MERIDIAN

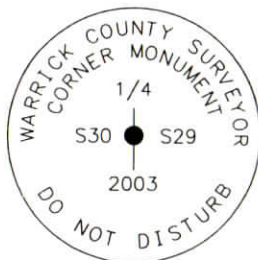
**WARRICK COUNTY SURVEYOR**  
 JAMES NIEMEYER

FOR NOTES ON CORNER HISTORY SEE REVERSE.

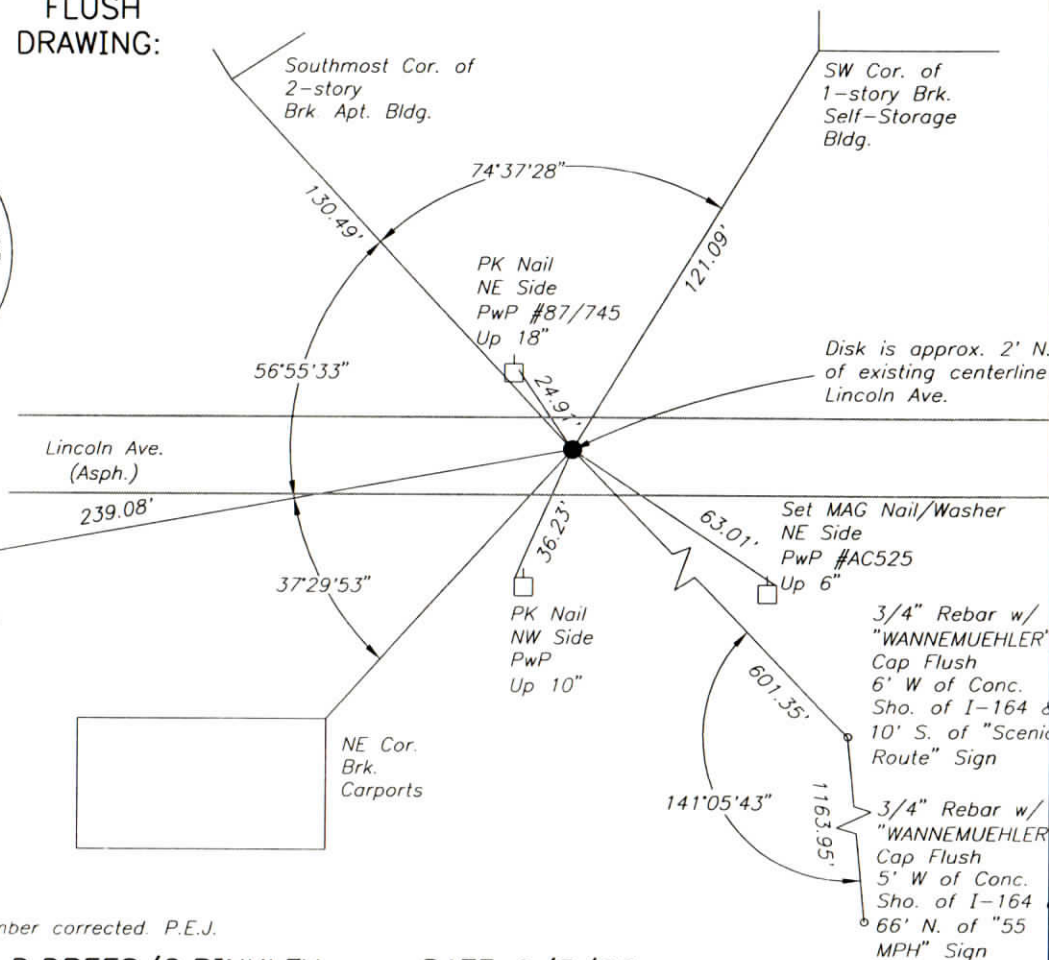
INDICATE CORNER REFERENCED:



MONUMENT TYPE: ALUM. DISK  
 SIZE: 4" DIAM.  
 DEPTH/HEIGHT: FLUSH  
 REFERENCE TIE DRAWING:



Stamping  
on Disk



STATE PLANE COORDINATE DATA:  
 INDIANA WEST ZONE, NAD 83 (1997)  
 U.S. SURVEY FEET

X ---  
 Y ---

COORDINATES ESTABLISHED BY:

APPROVED BY:

DATE:

Rev.: 9/9/05 Section Number corrected. P.E.J.

REFERENCED BY: D.DREES/C.BINKLEY

DATE: 9/3/02

DISK SET 10/27/03 D.DREES/G.M.BURRESS

APPROVED BY: P.JONES, RLS#9600016

DATE: 10/28/03

CORNER FILE CODE:  
 T6S-R9W-T-05



CORNER HISTORY:

CORNER FILE CODE:  
T6S-R9W-T-05

ORIGINAL USPLS SURVEY: Corner established by Jacob Fowler, Dec. 19, 1805 "Post".

COUNTY SURVEYOR'S BOOKS: Vand. Co. Book B P. 148: James D. Saunders VCS November 30, 1859 "Stone Marked 1/2 S"

Book 1 P. 238: O.B.Pasco WCS Nov. 25, 1865 (Brq. Trees copied from Vand. Book).

Vand. Co. Book D P. 15 Franklin Sours [sp?] VCS Dec. 6, 1887 "Stone by Sanders".

OTHER SURVEYS AND PLATS: "Corner Code System" card shows an undated reference to a RR spike flush.

The 1979 plat of Lakeside Terrace Estates I (Vand. Co.) shows a RR spike.

Lincoln Ave. Route Survey (Bernardin-Lochmueller & Assoc. 1990, unrecorded) tied in and referenced a RR Spike 2" below grade (located over a culvert for Williams Ditch).

"Corner Record" cards from both Vanderburgh and Warrick Counties show a 1994 reference to a PK nail in washer as taken from the plat of Ivy Glenn Subdivision.

In 1995, the PK nail in washer was not found, but the RR spike was found below asphalt grade and was used in a survey of a tract which became Interstate Office Park (Doc. 2000R-004425). Ties were made to corners in Ivy Glenn Subdivision and no significant discrepancies were found.

VERIFICATION OF CORNER POSITION: September, 2002; apparently a new box culvert has been installed at the corner, and the spike destroyed. A PK nail was found marking the corner, and was referenced. March, 2003; the PK nail found was tied to control points from the Interstate Office Park survey, and its position relative to the former RR spike was verified within 0.04 feet. October 27, 2003: The PK nail was replaced with the aluminum disk shown.

Perry E. Jones 10/28/03



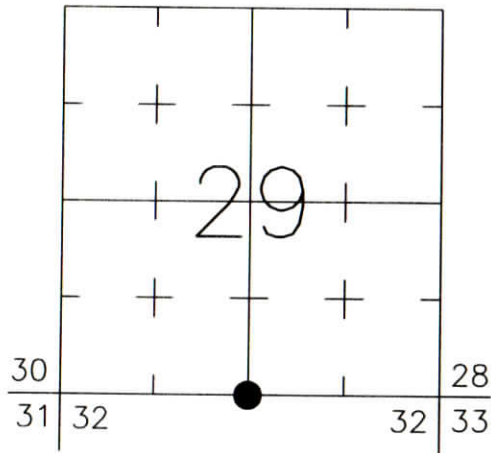
CORNER RECORD  
WARRICK COUNTY



DESCRIPTION:  
SOUTHWEST CORNER SOUTHEAST QUARTER  
SECTION 29, T. 6 S., R. 9 W.  
2nd PRINCIPLE MERIDIAN

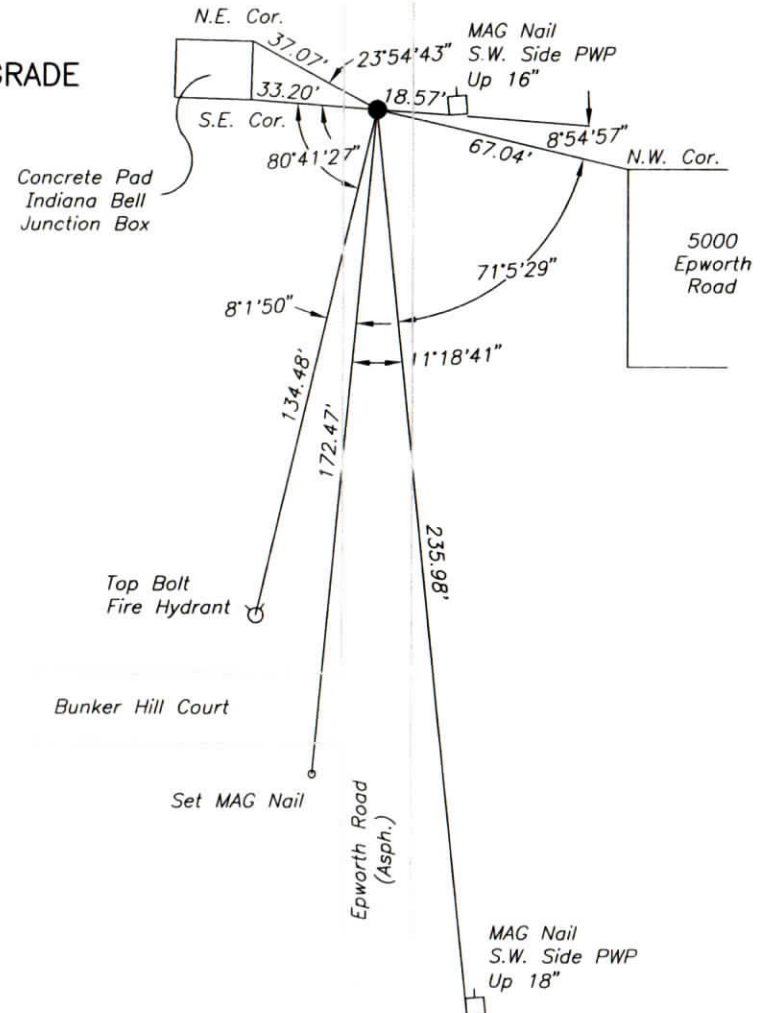
WARRICK COUNTY SURVEYOR  
KARAN HARGRAVE-BARNHILL

INDICATE CORNER REFERENCED:



MONUMENT TYPE: REBAR  
SIZE: 1/2"  
DEPTH/HEIGHT: 6" BELOW GRADE  
REFERENCE TIE DRAWING:

FOR NOTES ON CORNER HISTORY SEE REVERSE.



STATE PLANE COORDINATE DATA:  
INDIANA WEST ZONE, NAD 83 (1997)  
U.S. SURVEY FEET

X \_\_\_\_  
Y \_\_\_\_

COORDINATES ESTABLISHED BY:

APPROVED BY:

DATE:

REFERENCED BY: K.KLEIN/M.BURRESS

APPROVED BY: P.JONES, RLS#9600016

DATE: 8/29/02

DATE: 3/12/03

CORNER FILE CODE:  
T6S-R9W-V-07

CORNER HISTORY:

CORNER FILE CODE:  
T6S-R9W-V-07

ORIGINAL USPLS SURVEY: Corner established by Jacob Fowler, Dec. 19, 1805 "Post" (@39.85 ch/79.70 ch).

COUNTY SURVEYOR'S BOOKS: Book 1 P. 112: John C. Frary WCS Feb. 1859 (Mon. not identified) "Orig. SW Tree Perpetuated"

Book 1 P. 238: O.B.Pasco WCS Nov. 25, 1865 "Stone Set Marked 1/2 S 29, Could find but the roots of the locust witness tree. Persons present showed where the tree formerly stood."

Book 3 P. 198: Calvin S. DeWeese WCS Aug. 26, 1927 "Old Stone Found"

OTHER SURVEYS AND PLATS: "Corner Code System" card shows an undated reference to a 1/2" IP.

Vanderburgh County Surveyor's office provided coordinates (dated 2002) of a 3/8" IP found.

The 1977 plat of Kenosha Hills Subdivision Sec. "A" shows ties to an iron pin.

The 1977 plat of Colonial Hills Section "B" shows ties to the corner (mon. not identified).

VERIFICATION OF CORNER POSITION: August, 2002; the 1/2" rebar shown was found in placed and referenced. March, 2003; ties were made to lot corner monuments in Colonial Hills Section "B" (rebars marking the southwest and southeast corners of Lot 91 and the northwest corner of Lot 34) which confirmed the corner position within 1.5 feet.

Perry E. Jones 3/12/03

CORNER RECORD  
WARRICK COUNTY

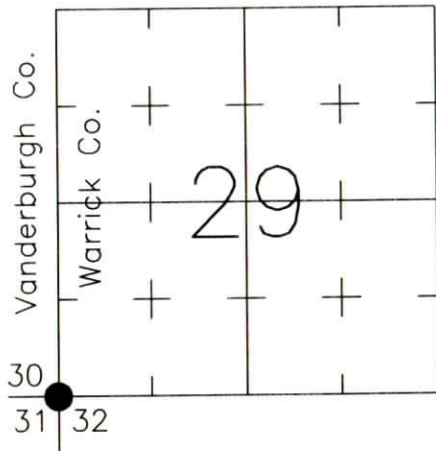


DESCRIPTION:  
SOUTHWEST CORNER \_\_\_\_\_  
SECTION 29, T. 6 S., R. 9 W.  
2nd PRINCIPAL MERIDIAN

WARRICK COUNTY SURVEYOR  
KARAN HARGRAVE-BARNHILL

FOR NOTES ON CORNER HISTORY SEE REVERSE.

INDICATE CORNER REFERENCED:



MONUMENT TYPE: NO MON. (WITNESS POINTS)  
SIZE:  
DEPTH/HEIGHT:  
REFERENCE TIE DRAWING:

NOTE: Brg's. & Dist's. to monuments along I-164 were calculated from traverse data and may not be directly visible from the corner.

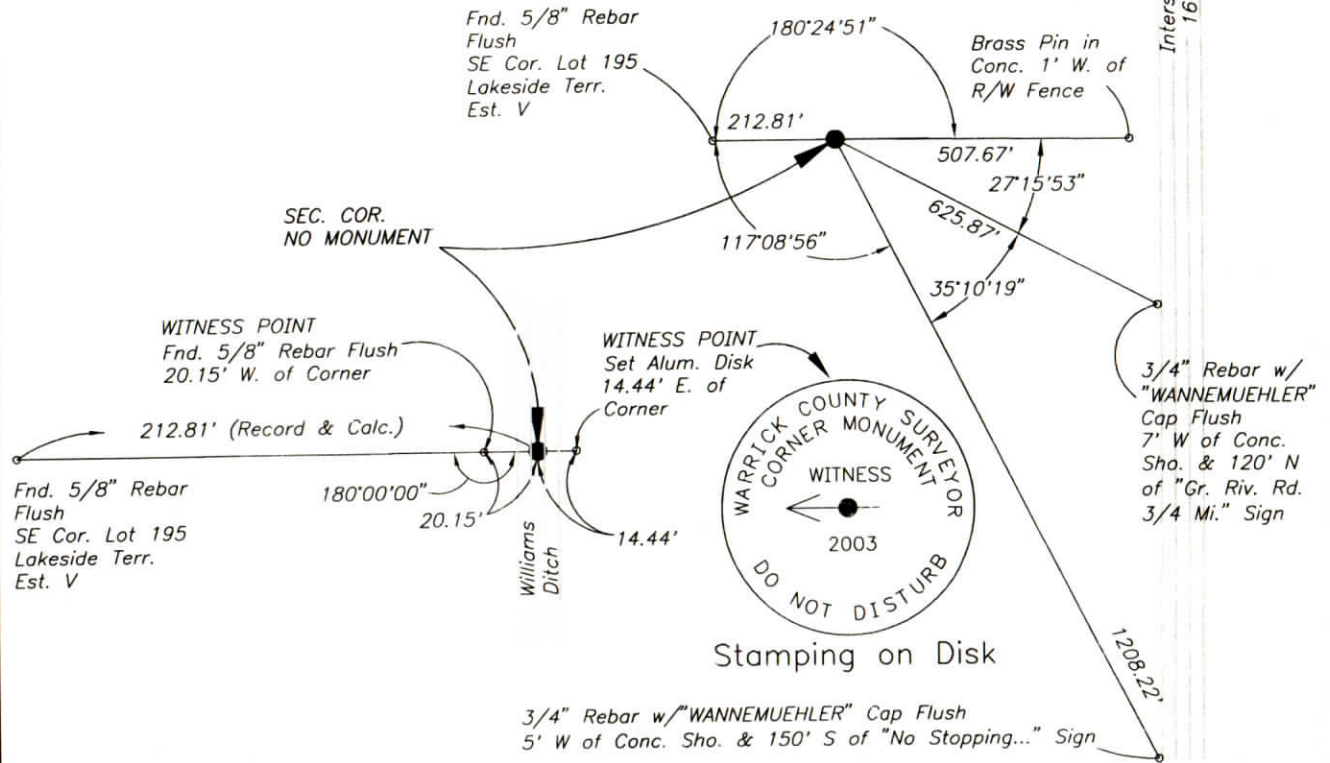
STATE PLANE COORDINATE DATA:  
INDIANA WEST ZONE, NAD 83 (1997)  
U.S. SURVEY FEET

X 2847079.51

Y 1009877.98

COORDINATES ESTABLISHED BY:  
Douglas G. McDonald, PE LS, Vand. Co.  
Surveyor's Office  
APPROVED BY:

DATE:



REFERENCED BY: K.KLEIN/G.M.BURRESS DATE: 8/27/02  
WITNESS DISK SET 10/24/03 D.DREES/G.M.BURRESS  
APPROVED BY: P.JONES, RLS#9600016 DATE: 10/28/03

CORNER FILE CODE:  
T6S-R9W-V-05



CORNER HISTORY:

CORNER FILE CODE:  
T6S-R9W-V-05

ORIGINAL USPLS SURVEY: Corner established by Jacob Fowler, Dec. 19, 1805 "Post".

COUNTY SURVEYOR'S BOOKS: Book 1 P. 238: O.B.Pasco WCS Nov. 25, 1865 "Stone Set Marked SW 29, Gov't. witness trees...were gone unless the decaying root of a red oak nearby is one"

Vand. Co. Book C P. 97 Chas. B Bateman VCS March 29, 1871 "Stone, Old Stone by WCS 69 links West"

OTHER SURVEYS AND PLATS: Vanderburgh County Surveyor's office provided calculated coordinates (dated 2002) based on ties to lot corners in Lakeside Terrace IV, V, and VI (Vand. Co.).

A 1995 survey of a tract which became Interstate Office Park (Doc. 2000R-004425) also used lot corners in Lakeside Terrace to calculate the corner position, which falls in Williams Ditch. Ties to the I-164 centerline, compared to deed descriptions for the I-164 R/W indicate a discrepancy of about 3' in the corner position as used on the I-164 project.

VERIFICATION OF CORNER POSITION: August 2002: The corner position was re-established (but not set) using a rebar found on the west bank of Williams Ditch (for line only) and using the plat distance from a rebar found at southeast corner of Lot 195 of Lakeside Terrace Estates V. This line was projected easterly to the eastern bank of Williams Ditch where a rebar was set as an additional witness. The actual corner falling in the channel of Williams Ditch and typically under water, no monument was set at the re-established corner. October 24, 2003: The witness rebar on the eastern bank of Williams Ditch was replaced with the aluminum disk shown. The rebar found on the west bank, presumed to be an original subdivision monument, was not disturbed.

Perry E. Jones 10/28/03



CORNER RECORD  
WARRICK COUNTY

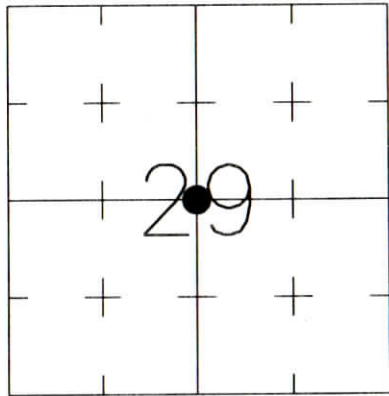


DESCRIPTION:  
SOUTHWEST CORNER NORTHEAST QUARTER  
SECTION 29, T. 6 S., R. 9 W.  
2nd PRINCIPAL MERIDIAN

WARRICK COUNTY SURVEYOR  
JAMES NIEMEYER

FOR NOTES ON CORNER HISTORY SEE REVERSE.

INDICATE CORNER REFERENCED:



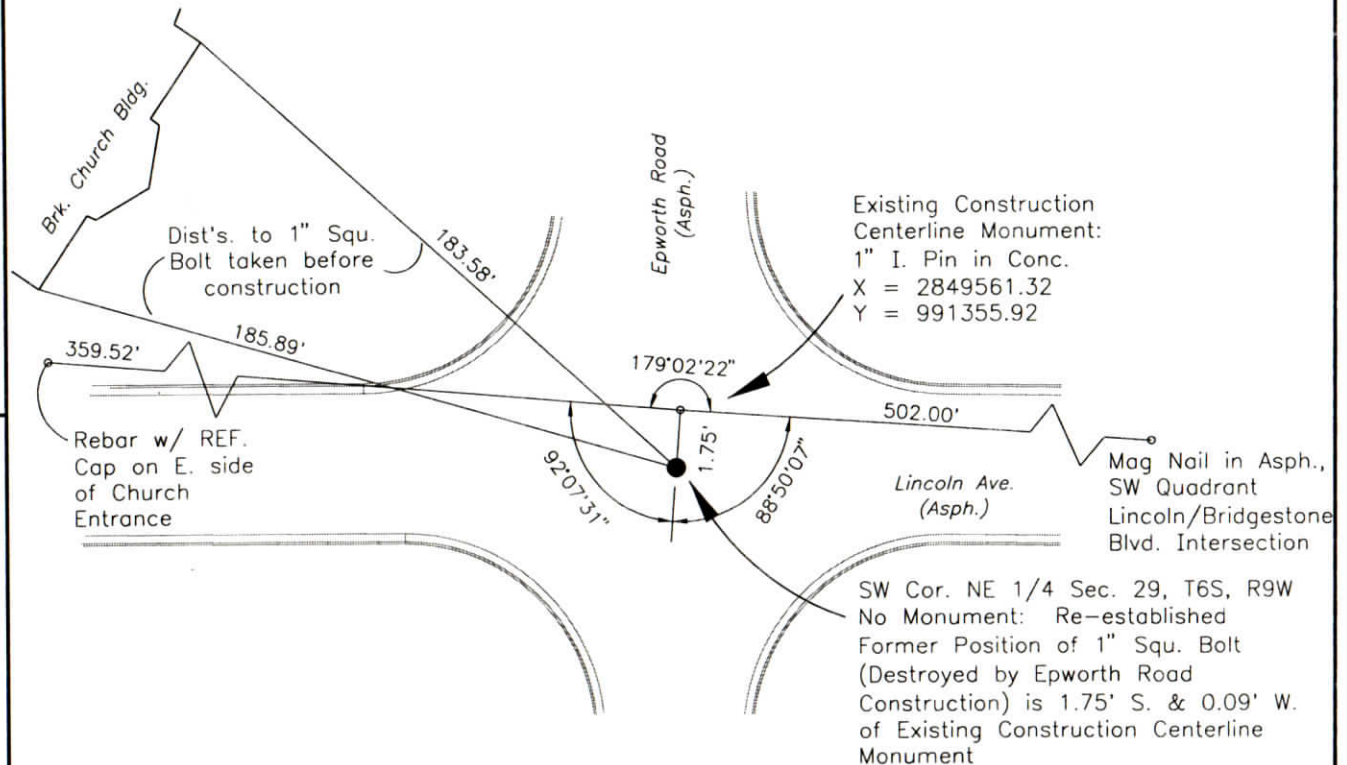
MONUMENT TYPE: NO MONUMENT  
SIZE: (WITNESS POINTS)  
DEPTH/HEIGHT:  
REFERENCE TIE DRAWING:

STATE PLANE COORDINATE DATA:  
INDIANA WEST ZONE  
NAD 83 (NSRS 2007)  
U.S. SURVEY FEET

X = 2849561.23

Y = 991354.17

COORDINATES ESTABLISHED BY:  
SEAN L. SUTTLES BY GPS  
OBSERVATIONS, INCORPORATING  
THE WARRICK COUNTY  
HORIZONTAL CONTROL NETWORK  
(SPRING 2007)



REFERENCED BY: G.M.BURRESS/K.KLEIN

DATE: 4/4/07

APPROVED BY: P.JONES, RLS#9600016

DATE: 10/12/07

CORNER FILE CODE:  
T6S-R9W-T-07

CORNER HISTORY:

CORNER FILE CODE:  
T6S-R9W-T-07

ORIGINAL USPLS SURVEY: (Center of Section not monumented by USPLS Survey).

COUNTY SURVEYOR'S BOOKS: Book 1 P. 57: W.B. Wright WCS November, 1855 (Mon. not identified, stone presumed).

Book 1 P. 238: O.B.Pasco WCS Nov. 25, 1865 "Stake Set"

Book 3 P. 198: Calvin S. DeWeese WCS Aug. 26, 1927 "Old Stone Found"

OTHER SURVEYS AND PLATS: "Corner Record" cards include a 1973 reference (mon. not identified), a 1991 reference to a 1" square iron pin as taken from the plat of Thornbrook Estates, and a 1993 reference to a 1" square iron pin as taken from the plat of Ashbury Parke Subdivision.

Lincoln Ave. Route Survey (Bernardin-Lochmueller & Assoc. 1990, unrecorded) tied in and referenced a 1" square bolt 4" below grade.

The 1" square bolt (or pin) was found in 1995, and was used in a survey of a tract which became Interstate Office Park (Doc. 2000R-004425).

VERIFICATION OF CORNER POSITION: September, 2002: The 1" square bolt shown was found in place, its position consistent with the 1991 reference from Thornbrooke Estates (+/- 0.1').

July, 2007: After completion of construction along Epworth Road, a construction centerline monument was found, 1.75' northerly of the re-established (calculated) position of the 1" square bolt (destroyed). The former position of the bolt was re-established by ties to original control points from the Lincoln Avenue and Epworth Road route surveys. State plane coordinates were obtained for the existing monument and were calculated for the former position of the bolt.

Perry E. Jones 9/27/02

Perry E. Jones 10/12/07

CORNER RECORD  
WARRICK COUNTY



DESCRIPTION :

SW CORNER SE 1/4 SW 1/4

SECTION 29, T. 6 S.

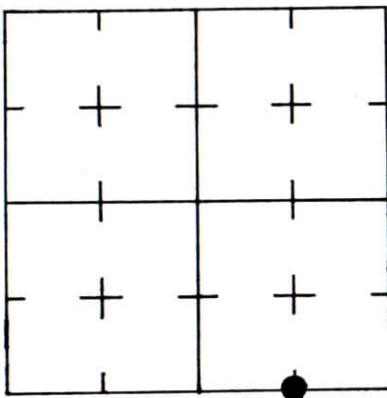
R. 9 W.

2<sup>nd</sup> PRINCIPLE MERIDIAN

WARRICK COUNTY SURVEYOR

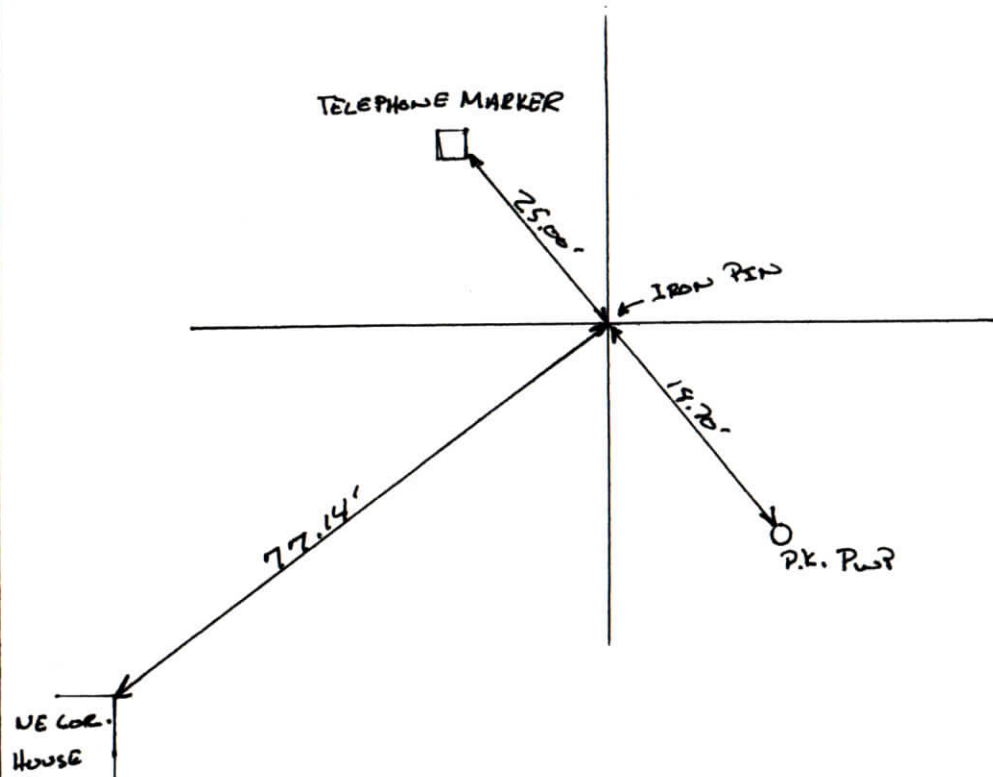
KARAN HARGRAVE-BARNHILL

INDICATE CORNER REFERENCED



DESCRIBE CORNER REFERENCED

KENOSHA HILLS SUB.  
Sec. "B"



STATE PLANE COORDINATE DATA

INDIANA ZONE: WEST

X \_\_\_\_\_

Y \_\_\_\_\_

ESTABLISHED BY:

APPROVED BY

DATE

REFERENCED BY:

DATE

ELMO D. DOCKERY

3-14-77



CORNER RECORD  
WARRICK COUNTY

DESCRIPTION :

SW CORNER SE 1/4 SE 1/4

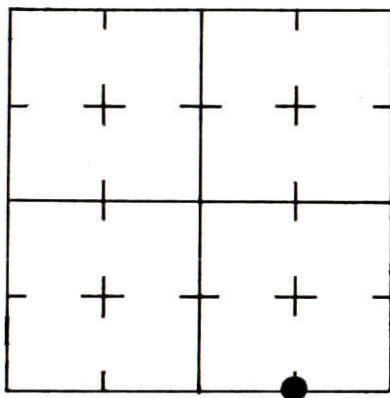
SECTION 29, T. 6 S. R. 9 W.

2<sup>nd</sup> PRINCIPLE MERIDIAN

WARRICK COUNTY SURVEYOR  
KARAN HARGRAVE-BARNHILL

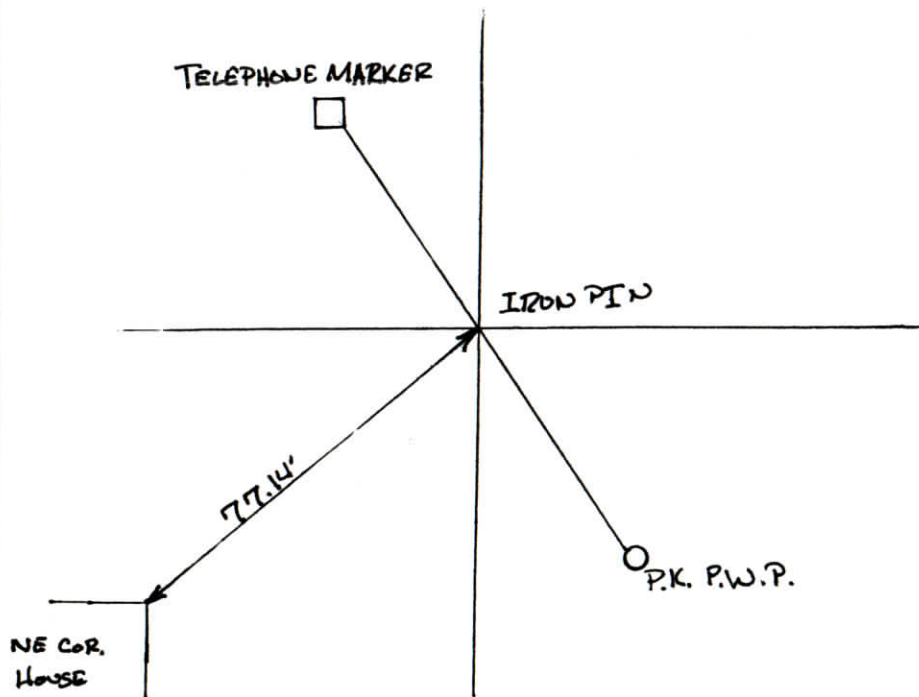


INDICATE CORNER REFERENCED



DESCRIBE CORNER REFERENCED

KENOSHA HILLS SUB.  
SEC. "B"



STATE PLANE COORDINATE DATA

INDIANA ZONE: WEST

X \_\_\_\_\_

Y \_\_\_\_\_

ESTABLISHED BY:  
\_\_\_\_\_

APPROVED BY

DATE

REFERENCED BY:

DATE

ELMO D. DOCKERY

7-12-77



CORNER RECORD  
WARRICK COUNTY



DESCRIPTION:

SW CORNER SE 1/4 SE 1/4

SECTION 29, T. 6 S. R. 9 W.

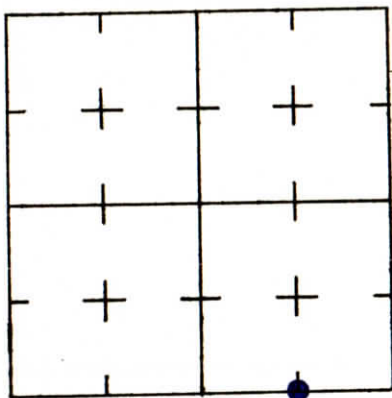
2<sup>nd</sup> PRINCIPLE MERIDIAN

Kenosha Hills Sub SEC 'B'

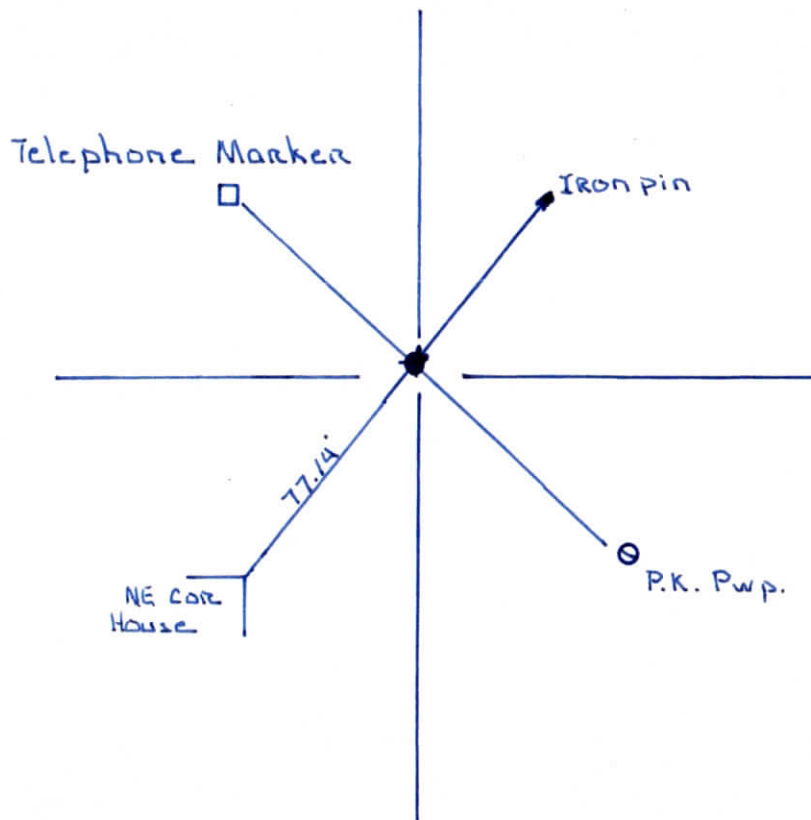
WARRICK COUNTY SURVEYOR

MICHAEL IRVIN

INDICATE CORNER REFERENCED



DESCRIBE CORNER REFERENCED



STATE PLANE COORDINATE DATA

INDIANA ZONE: WEST

X \_\_\_\_\_

Y \_\_\_\_\_

ESTABLISHED BY:

\_\_\_\_\_

APPROVED BY

DATE

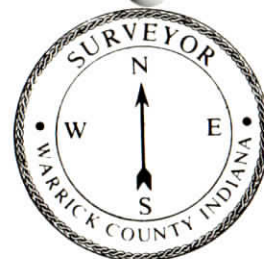
REFERENCED BY:

DATE

Elmo D Dockery

June 13, 1979

CORNER RECORD  
WARRICK COUNTY



DESCRIPTION:

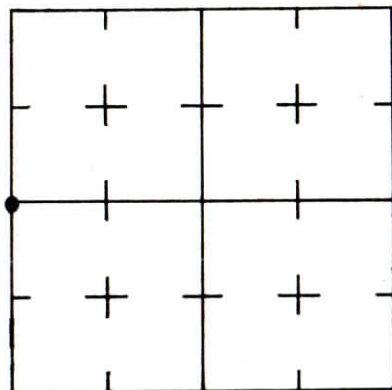
N.W. CORNER S.W. 1/4

SECTION 29, T. 6 S. R. 9 W.

2<sup>nd</sup> PRINCIPLE MERIDIAN

WARRICK COUNTY SURVEYOR  
KARAN HARGRAVE-BARNHILL

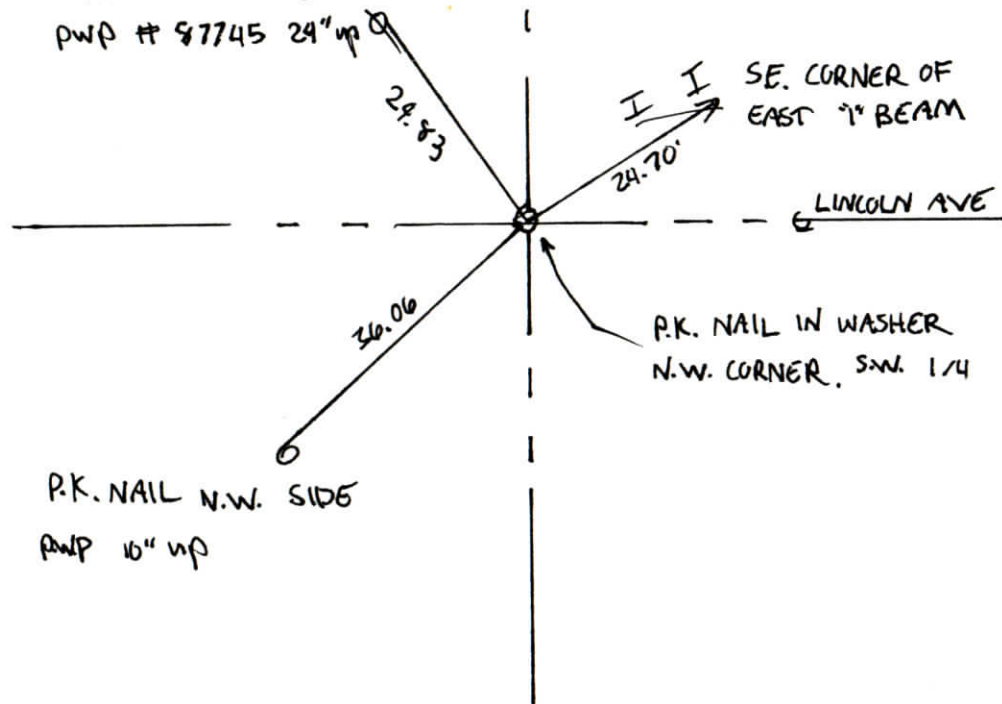
INDICATE CORNER REFERENCED



DESCRIBE CORNER REFERENCED

IVY-GLEN, #1

PK. NAIL NE. SIDE  
PWP # 87745 24" up



STATE PLANE COORDINATE DATA

INDIANA ZONE: WEST

X \_\_\_\_\_

Y \_\_\_\_\_

ESTABLISHED BY:

APPROVED BY

DATE

REFERENCED BY:

DATE

RALPH A. EASLEY

1994

**CORNER RECORD  
WARRICK COUNTY**



DESCRIPTION :

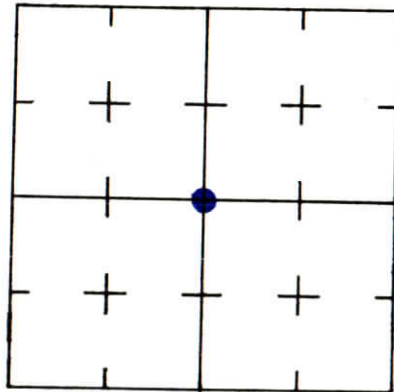
SW CORNER SW<sup>1</sup>/<sub>4</sub> NE<sup>1</sup>/<sub>4</sub>

SECTION 29, T. 6 S. R. 9 W.

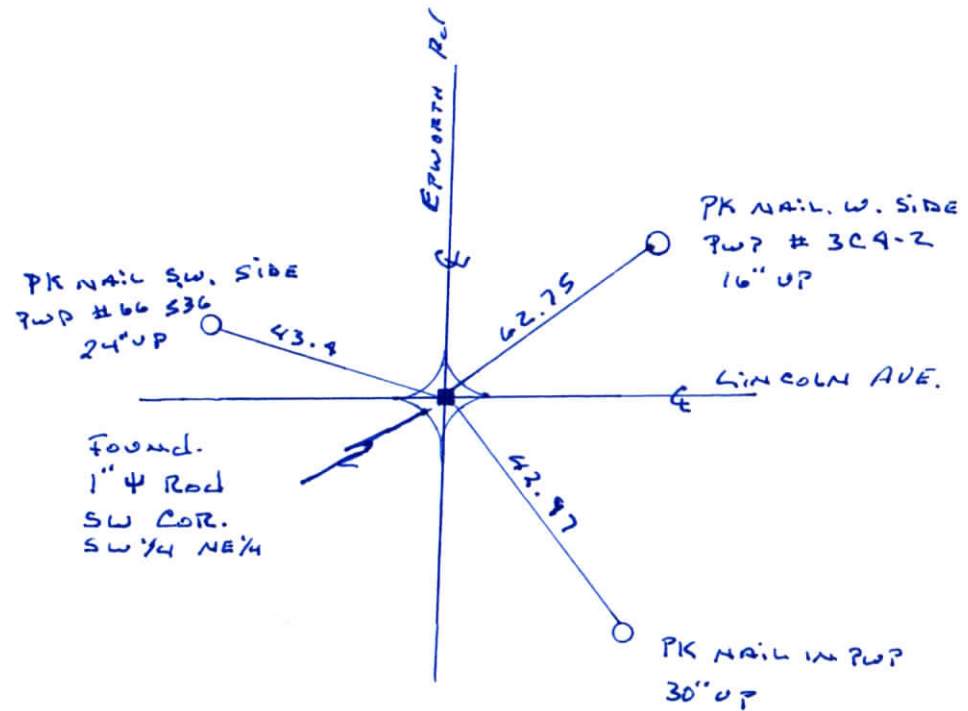
2<sup>nd</sup> PRINCIPLE MERIDIAN

**WARRICK COUNTY SURVEYOR  
KARAN HARGRAVE-BARNHILL**

INDICATE CORNER REFERENCED



DESCRIBE CORNER REFERENCED



STATE PLANE COORDINATE DATA

INDIANA ZONE: WEST

X \_\_\_\_\_

Y \_\_\_\_\_

ESTABLISHED BY:

\_\_\_\_\_

APPROVED BY

DATE

REFERENCED BY:

*Ralph Easley Jr.*

DATE

*Jan 30th 93*

**CORNER RECORD  
WARRICK COUNTY**



DESCRIPTION:

SW CORNER NW 1/4 SE 1/4

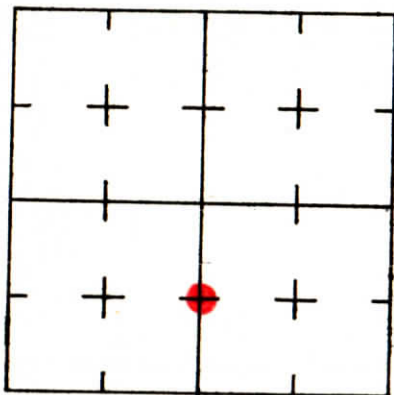
SECTION 29, T. 6 S. R. 9 W.

2<sup>nd</sup> PRINCIPLE MERIDIAN

**WARRICK COUNTY SURVEYOR  
MICHAEL IRVIN**

*Thornbrook Est sec C*

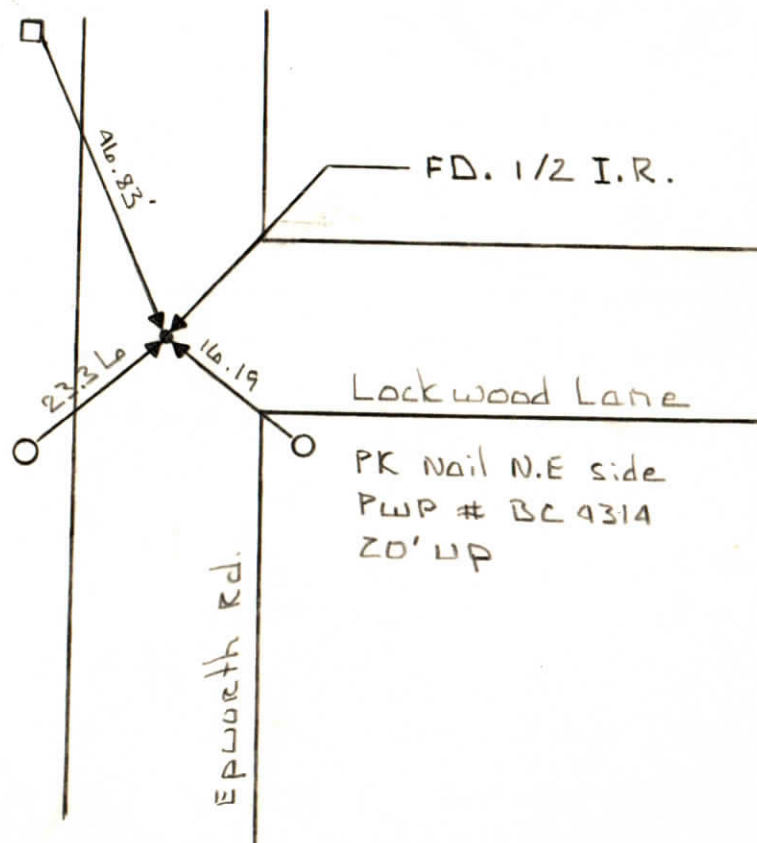
INDICATE CORNER REFERENCED



DESCRIBE CORNER REFERENCED

Top S.E. Cor  
In. Bell Tel  
Box

PK Nail S. side  
PWP # 79964  
16" UP



Lockwood Lane

PK Nail N.E. side  
PWP # BC 4314  
20" UP

Epworth Rd.

STATE PLANE COORDINATE DATA

INDIANA ZONE: WEST

X \_\_\_\_\_

Y \_\_\_\_\_

ESTABLISHED BY:

APPROVED BY

DATE

REFERENCED BY:

*Ralph A. Easley*

DATE

*March 1991*



CORNER RECORD  
WARRICK COUNTY



DESCRIPTION:

NW CORNER NW 1/4 SE 1/4

SECTION 29, T. 6 S. R. 9 W.

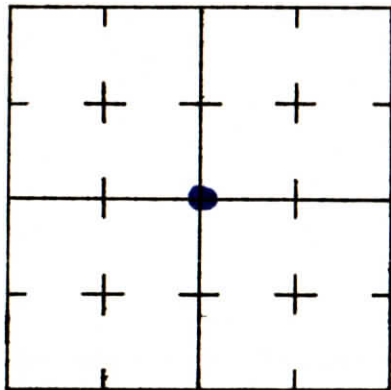
2<sup>nd</sup> PRINCIPLE MERIDIAN

Thorn Brook Estates #471

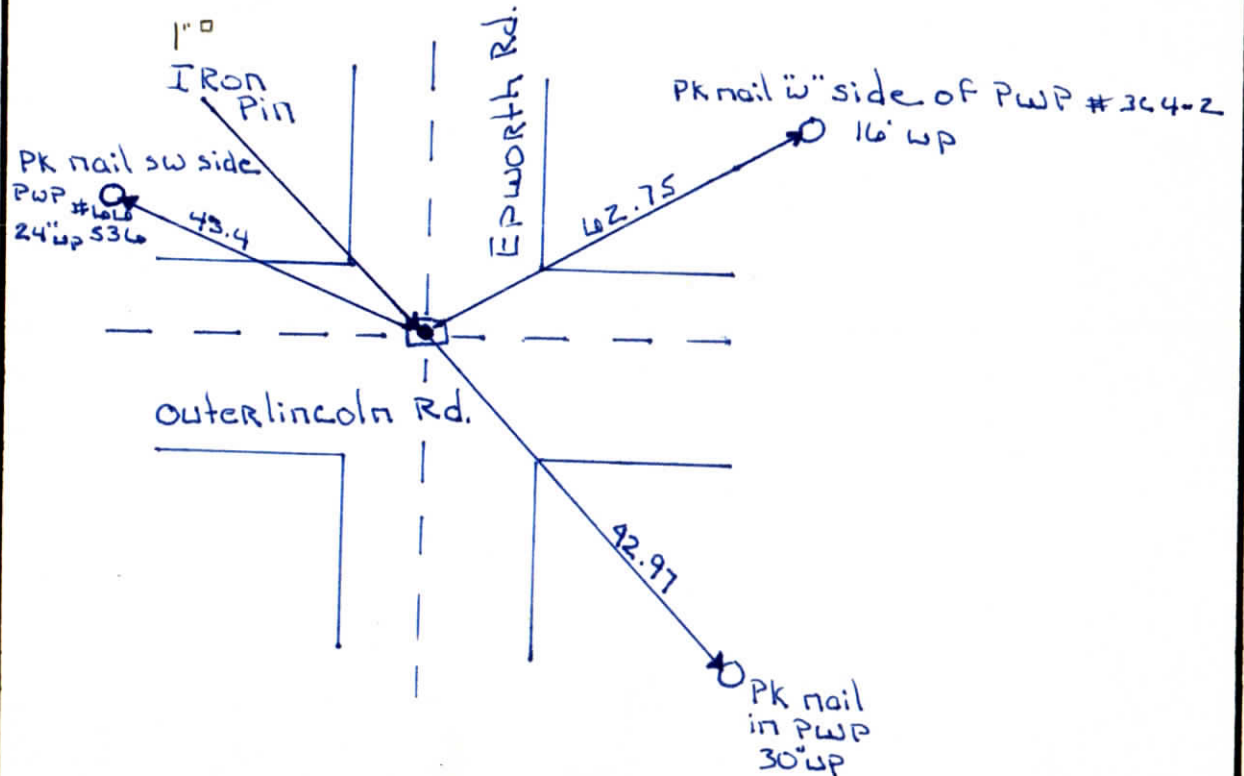
WARRICK COUNTY SURVEYOR

MICHAEL IRVIN

INDICATE CORNER REFERENCED



DESCRIBE CORNER REFERENCED



STATE PLANE COORDINATE DATA

INDIANA ZONE: WEST

X \_\_\_\_\_

Y \_\_\_\_\_

ESTABLISHED BY:

APPROVED BY

DATE

REFERENCED BY:

DATE

Bruce Miller

Feb 13, 1991

CORNER RECORD  
WARRICK COUNTY



DESCRIPTION:

NW CORNER NE 1/4 SE 1/4

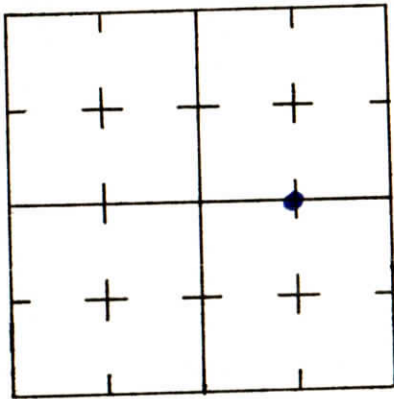
SECTION 29, T. 6 S. R. 9 W.

2<sup>nd</sup> PRINCIPLE MERIDIAN

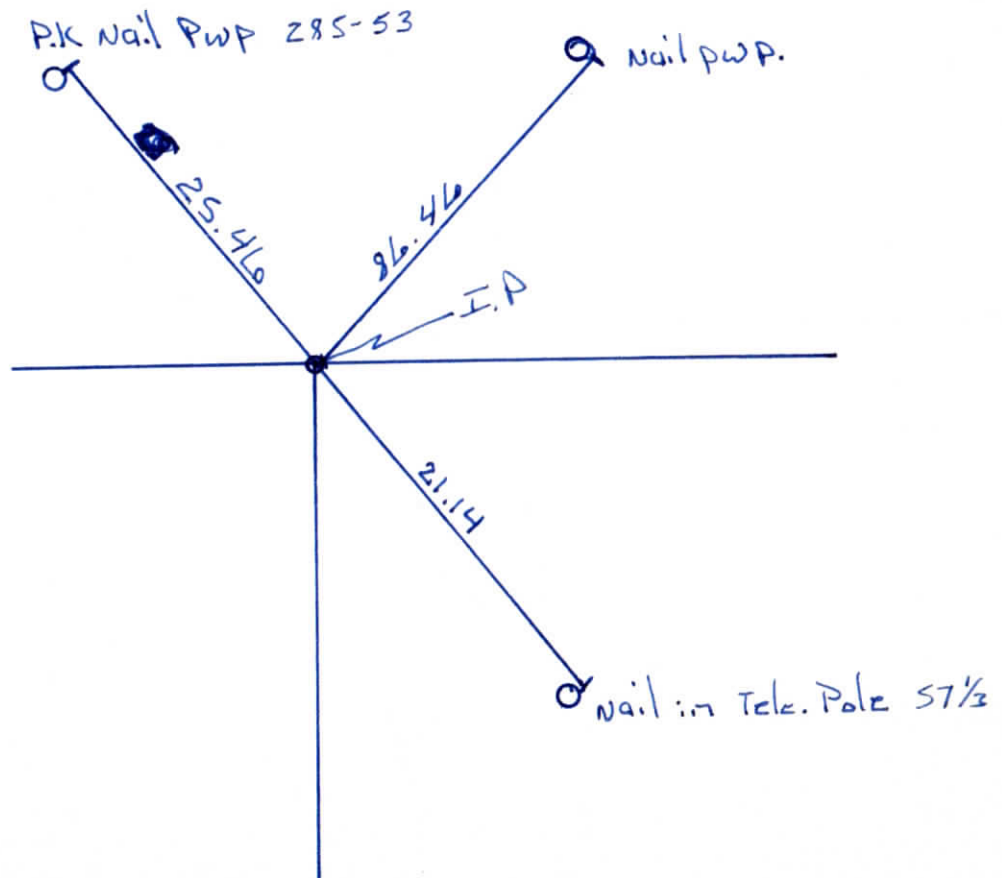
WOOD STOWER ESTATES Sub

WARRICK COUNTY SURVEYOR  
MICHAEL IRVIN

INDICATE CORNER REFERENCED



DESCRIBE CORNER REFERENCED



STATE PLANE COORDINATE DATA

INDIANA ZONE: WEST

X \_\_\_\_\_

Y \_\_\_\_\_

ESTABLISHED BY:

\_\_\_\_\_

APPROVED BY

DATE

REFERENCED BY:

DATE

Elmo D Dockery

April 13, 1983



# RECORD OF SECTION CORNERS

Warrick County

Section 29 Township 6 South Range 9 West 2nd Principle Meridian

Date	Cor	Location	Description of		Distance from Corner	Bearing from Corner (North Assumed)	Cond	Check By	Remarks
			Monument	Reference					
	A								
	B								
	C								
	D								
6-6-73 & 7-15-74	E	SE cor. NE $\frac{1}{4}$	7/8" re-bar	1) PK nail 2) Post 3) Post 4) Post	36.75' 36.7' 46.9' 31.0'	N 44° E S 26° E S 52° W N 71° W	good	GAT	Found in place In PWP # 285148 Post of STOP sign Post of CABLE sign Post of MAIL box
	F								
	G								
7-9-73 & 7-23-74	H	SE cor. SE $\frac{1}{4}$	7/8" re-bar & 1/2" rod	<del>1) Post</del> 2) Post NORA	<del>34.9'</del> 34.9'	<del>N 71° E</del> S 37° W	good	GAT	Found in place <del>Post of STOP sign</del> Post of SURVEY MARKER
6-6-73 & 7-15-74	I	Center of Sec.	1" sq. iron rod	1) Post 2) Post 3) Post 4) PK nail	33.8' 87.8' 46.3' 43.4'	N 66° E S 84° E S 76° W N 50° W	fair	GAT	Found in place Post of STOP sign Post of WEIGHT sign Post of STOP sign In PWP # 66536



**CORNER RECORD  
WARRICK COUNTY**



DESCRIPTION :

NW CORNER NW 1/4

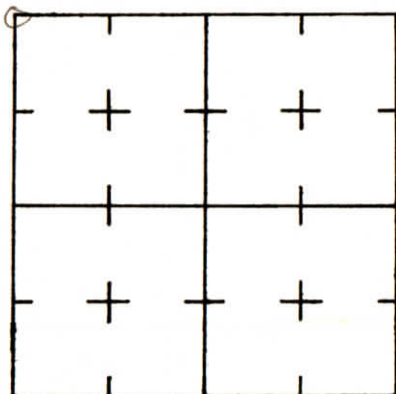
SECTION 31, T. 6 S. R. 8 W.

2<sup>nd</sup> PRINCIPLE MERIDIAN

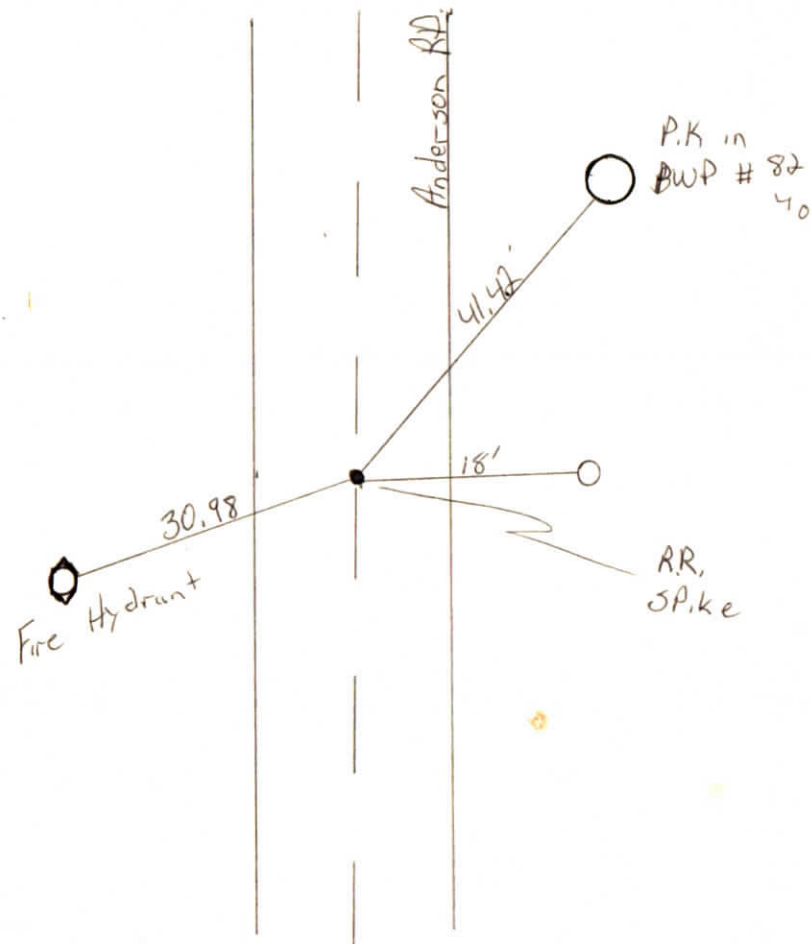
**WARRICK COUNTY SURVEYOR**

**MICHAEL IRVIN**

INDICATE CORNER REFERENCED



DESCRIBE CORNER REFERENCED



STATE PLANE COORDINATE DATA

INDIANA ZONE: WEST

X \_\_\_\_\_

Y \_\_\_\_\_

ESTABLISHED BY:

APPROVED BY Not verified

DATE

REFERENCED BY:

Gary + Jeff

DATE

7-30-86