

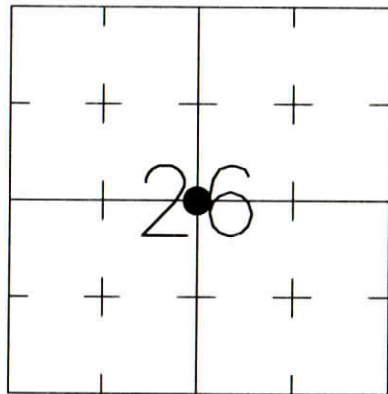
CORNER RECORD
WARRICK COUNTY



DESCRIPTION:
SOUTHWEST CORNER NORTHEAST QUARTER
SECTION 26, T. 6 S., R. 9 W.
2nd PRINCIPLE MERIDIAN

WARRICK COUNTY SURVEYOR
KARAN HARGRAVE-BARNHILL

INDICATE CORNER REFERENCED:



MONUMENT TYPE: IRON PIPE
SIZE: 1 3/4" O.D.
DEPTH/HEIGHT: 8" BELOW GRADE
REFERENCE TIE DRAWING:

FOR NOTES ON CORNER HISTORY SEE REVERSE.

STATE PLANE COORDINATE DATA:
INDIANA WEST ZONE, NAD 83 (1997)
U.S. SURVEY FEET

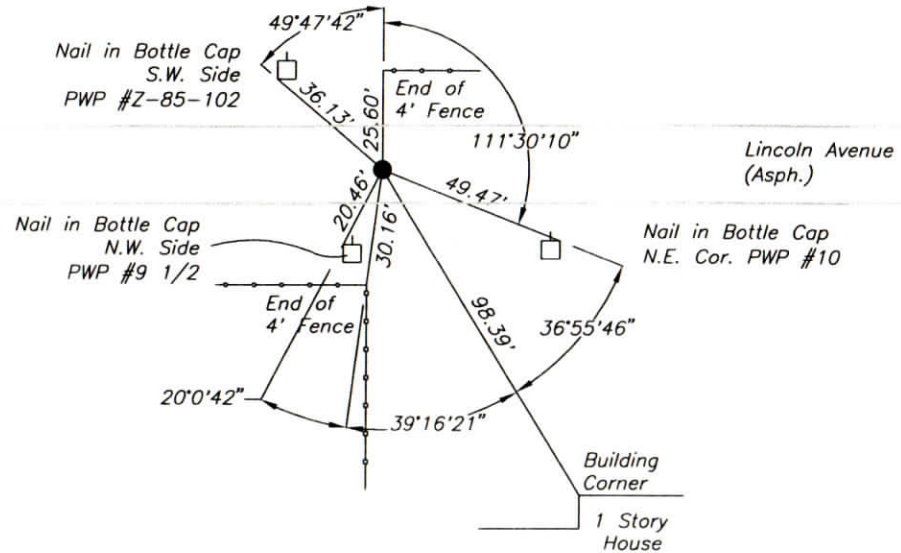
X _____

Y _____

COORDINATES ESTABLISHED BY:

APPROVED BY:

DATE:



REFERENCED BY: D.DREES/C.BINKLEY

DATE: 8/29/02

APPROVED BY: P.JONES, RLS#9600016

DATE: 3/12/03

CORNER FILE CODE:
T6S-R9W-T-19

CORNER HISTORY:

CORNER FILE CODE:
T6S-R9W-T-19

ORIGINAL USPLS SURVEY: (Center of Section not monumented by USPLS Survey)

COUNTY SURVEYOR'S BOOKS: Book 1 P. 29: Isaac Adams WCS August 1, 1854 "Stone".

Book 3 P. 202: Louis Meyer WCS Oct. 2-6, 1914 "Sand Stone set".

OTHER SURVEYS AND PLATS: "Corner Record" cards include a 1973 reference (mon. not identified) and a 1974 reference to a 1" iron pin as taken from the plat of Maehill Meadows Subdivision.

A 1-3/4" O.D. iron pipe, was tied in on the Lincoln Ave. Route Survey (Bernardin-Lochmueller & Assoc. 1990, unrecorded).

Location Control Route Surveys for SR 66 (Docs. 1997R-007360 and 1997R-007361) (section corner ties performed in 1991) show ties to a 1-3/4" I.D. iron pipe.

VERIFICATION OF CORNER POSITION: August 2002; the iron pipe shown was found in placed and referenced; however, the distances measured to bottle caps found in utility poles did not match those shown (to PK Nails) on the 1973 Corner Record Card. March, 2003; ties were made to multiple lot corner monuments in Maehill Meadows Subdivision and Broadview #2 Sec. C. All corner monuments tied agreed with the iron pipe's position within 1 foot.

Perry E. Jones 3/12/03

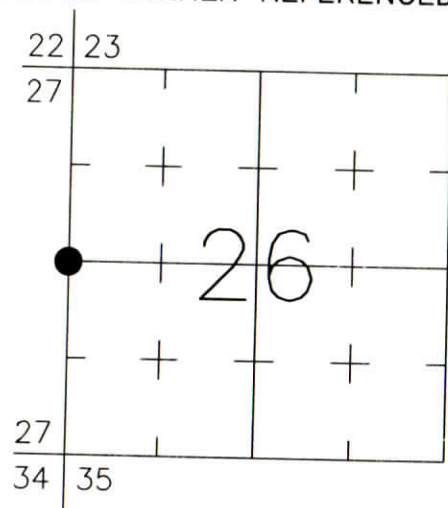
CORNER RECORD
WARRICK COUNTY



DESCRIPTION:
SOUTHWEST CORNER NORTHWEST QUARTER
SECTION 26, T. 6 S., R. 9 W.
2nd PRINCIPAL MERIDIAN

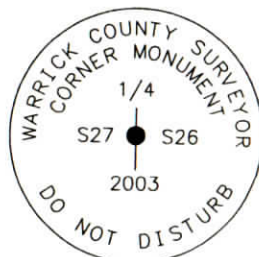
WARRICK COUNTY SURVEYOR
KARAN HARGRAVE-BARNHILL

INDICATE CORNER REFERENCED:



MONUMENT TYPE: ALUM. DISK
SIZE: 4" DIAM.
DEPTH/HEIGHT: 1" Below Pvmt. Grade
REFERENCE TIE DRAWING:

FOR NOTES ON CORNER HISTORY SEE REVERSE.



Stamping
on Disk

STATE PLANE COORDINATE DATA:
INDIANA WEST ZONE, NAD 83 (1997)
U.S. SURVEY FEET

X _____

Y _____

COORDINATES ESTABLISHED BY:

APPROVED BY:

DATE:

Lincoln Ave.
(Asph.)

Set MAG Nail
NE Side
PwP
Up 5"

Set MAG Nail
NW Side
Tele. Pole
Up 5"

SW Cor.
Area Inlet

Fnd. 1/2"
I. Pin

State St.
(Asph.)

REFERENCED BY: K.KLEIN/C.BINKLEY

DATE: 2/13/03

DISK SET 10/28/03 D.DREES/G.M.BURRESS

APPROVED BY: P.JONES, RLS#9600016

DATE: 10/29/03

CORNER FILE CODE:

T6S-R9W-T-17

CORNER HISTORY:

CORNER FILE CODE:
T6S-R9W-T-17

ORIGINAL USPLS SURVEY: Corner established by Jacob Fowler, Dec. 18, 1805 "Post".

COUNTY SURVEYOR'S BOOKS: Book 1 P. 29: Isaac Adams WCS August 1, 1854 "Stone".

Book 1 P. 237: O.B.Pasco WCS Nov. 25, 1865 (Set Stones along Sec. Line, no mention of this corner).

Book 3 P. 202: Louis Meyer WCS Oct. 2-6, 1914 "Sand Stone set".

Book 3 P. 272 B.C.Samples, Surveyor, June 5, 1930 "Iron Pin" in dirt road, 83.3' E of ctr. of Bnvl-Nwbq. Gravel Road"

OTHER SURVEYS AND PLATS: A 3/4" O.D. iron pipe, flush, was tied in and referenced on the Bell Road Route Survey (Bernardin-Lochmueller & Assoc. 1989, unrecorded) and on the Lincoln Ave. Route Survey (Bernardin-Lochmueller & Assoc. 1990, unrecorded). The pipe was located approximately 76' east of the intersection of State Street and Lincoln Ave as of 1990.

VERIFICATION OF CORNER POSITION: March, 2003; the iron pipe used on the 1989/1990 route surveys was not found, apparently destroyed by culvert construction. Property corner ties from the Lincoln Avenue survey were reviewed; although ties to lot corner monuments in Tennyson Terrace indicated a position about 5' east and 1' south of the pipe, several property corner monuments found along the section line north of the corner aligned well with the pipe's former position. The pipe's 1990 position was therefore accepted as the apparent corner, and a MAG nail was set (Temporary; a permanent monument to be set in the future). October 28, 2003: the MAG nail was replaced with the aluminum disk shown.

Perry E. Jones 10/31/03

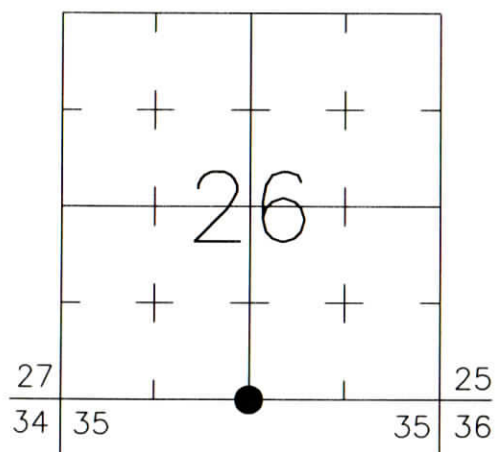
CORNER RECORD WARRICK COUNTY



DESCRIPTION:
SOUTHWEST CORNER SOUTHEAST QUARTER
SECTION 26, T. 6 S., R. 9 W.
 2nd PRINCIPLE MERIDIAN

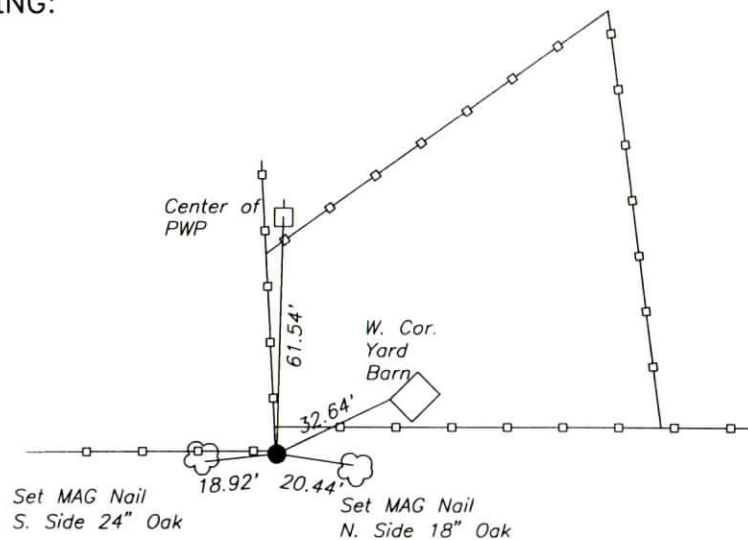
WARRICK COUNTY SURVEYOR
 KARAN HARGRAVE-BARNHILL

INDICATE CORNER REFERENCED:



MONUMENT TYPE: IRON PIPE
 SIZE: 1" O.D.
 DEPTH/HEIGHT: 2" BELOW GRADE
 REFERENCE TIE DRAWING:

FOR NOTES ON CORNER HISTORY SEE REVERSE.



STATE PLANE COORDINATE DATA:
 INDIANA WEST ZONE, NAD 83 (1997)
 U.S. SURVEY FEET

X ----

Y ----

COORDINATES ESTABLISHED BY:

APPROVED BY:

DATE:

REFERENCED BY: D.DREES/C.BINKLEY

DATE: 8/27/02

APPROVED BY: P.JONES, RLS#9600016

DATE: 9/12/02

CORNER FILE CODE:
 T6S-R9W-V-19

CORNER HISTORY:

CORNER FILE CODE:
T6S-R9W-V-19

ORIGINAL USPLS SURVEY: Corner established by Jacob Fowler, Dec. 18, 1805 "Post" (@39.90ch/79.80ch).

COUNTY SURVEYOR'S BOOKS: Book 1 P. 29: Isaac Adams WCS August 1, 1854 "Stone"

OTHER SURVEYS AND PLATS: "Corner Record" cards show 1977 references as taken from South Broadview Subdivision (various sections).

The 1976 plat of Twin Oaks Subdivision Sec. C ties to the corner (mon. not identified).

VERIFICATION OF CORNER POSITION: August, 2002: The 1" O.D. Iron Pipe shown was found in place. Two trees were found at distances from the pipe which matched approximately the 1977 Corner Record card reference ties (the PK nails called for were not found, apparently overgrown).

Perry E. Jones 9/12/02

CORNER RECORD
WARRICK COUNTY

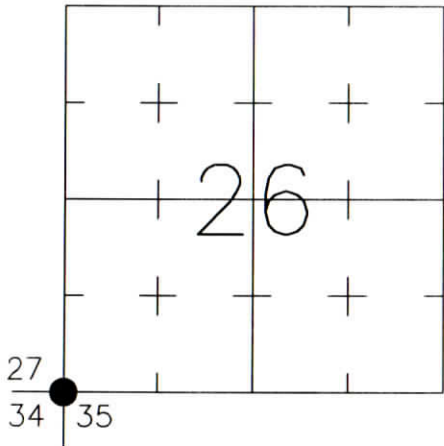


DESCRIPTION:
SOUTHWEST CORNER _____
SECTION 26, T. 6 S., R. 9 W.
2nd PRINCIPLE MERIDIAN

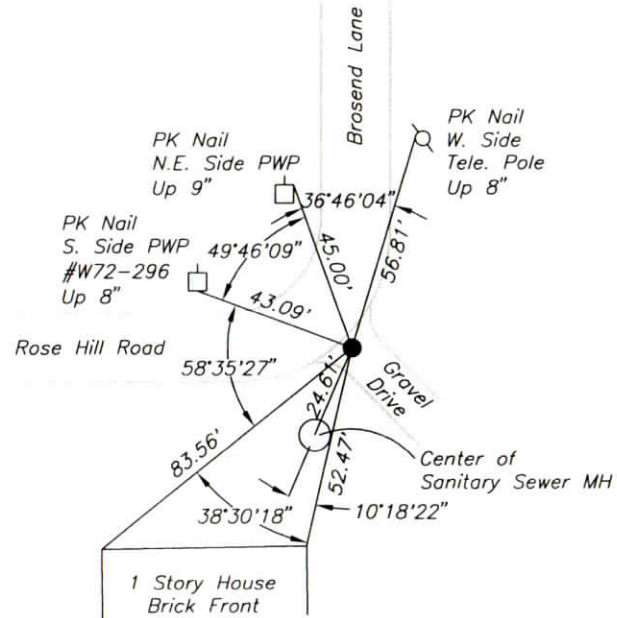
WARRICK COUNTY SURVEYOR
KARAN HARGRAVE-BARNHILL

FOR NOTES ON CORNER HISTORY SEE REVERSE.

INDICATE CORNER REFERENCED:



MONUMENT TYPE: REBAR
SIZE: 3/4"
DEPTH/HEIGHT: FLUSH
REFERENCE TIE DRAWING:



STATE PLANE COORDINATE DATA:
INDIANA WEST ZONE, NAD 83 (1997)
U.S. SURVEY FEET

X _____

Y _____

COORDINATES ESTABLISHED BY:

APPROVED BY:

DATE:

REFERENCED BY: D.DREES/C.BINKLEY

APPROVED BY: P.JONES, RLS#9600016

DATE: 8/27/02

DATE: 9/12/02

CORNER FILE CODE:
T6S-R9W-V-17

CORNER HISTORY:

CORNER FILE CODE:
T6S-R9W-V-17

ORIGINAL USPLS SURVEY: Corner established by Jacob Fowler, Dec. 18, 1805 "Post".

COUNTY SURVEYOR'S BOOKS: Book 1 P. 29: Isaac Adams WCS August 1, 1854 "Stone"

Book 1 P. 237: O.B.Pasco WCS Nov. 25, 1865 "Stake set".

Book 3 P. 202: Louis Meyer WCS Oct. 2-6, 1914 "Sand Stone set".

OTHER SURVEYS AND PLATS: "Corner Record" cards include a 1973 reference to an iron pin as taken from the plat of Newburgh Plaza South, and 1976-77 references taken from the plats of South Broadview Sec. "B" and South Broadview No. 2 Sec. "A". "Corner Code System" card shows a 1981 reference to an IP.

A found 5/8" rebar was tied in and referenced on the Bell Road Route Survey (Bernardin-Lochmueller & Assoc. 1989, unrecorded).

The plats of Franklin Place PRUD (Doc. 1999R-009670) and Sunrise Manor Amended Plat of Acacia Residential Development (Doc. 2000R-008504) show dimensions to the corner (monument not identified).

VERIFICATION OF CORNER POSITION: August, 2002: The 3/4" rebar shown was found in place, reasonably consistent (+/- 0.25') with the 1973 Corner Record reference ties.

Perry E. Jones 9/12/02

CORNER RECORD
WARRICK COUNTY

DESCRIPTION:

NW 1/4 CORNER NW 1/4 NW 1/4

SECTION 26, T. 6 S. R. 9 W.

2nd PRINCIPLE MERIDIAN

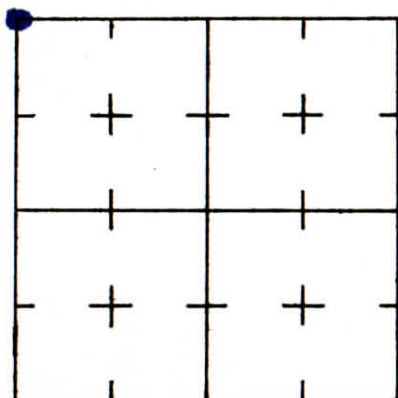
High Point Centre sec "B" # 466

WARRICK COUNTY SURVEYOR

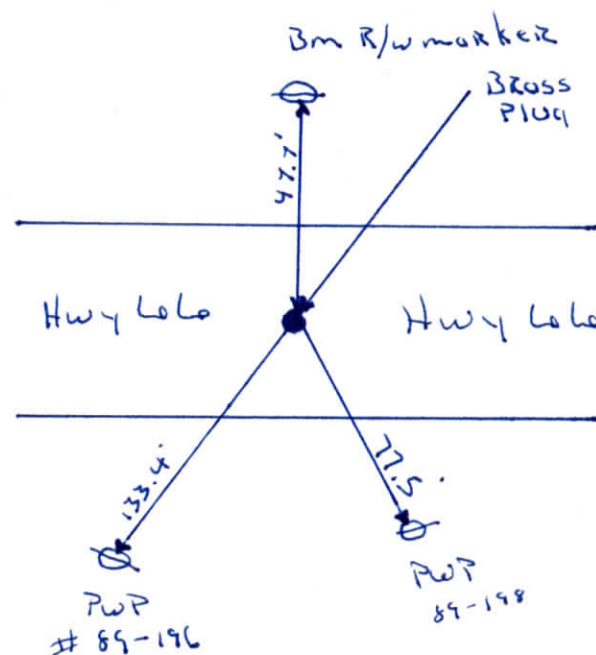
MICHAEL IRVIN



INDICATE CORNER REFERENCED



DESCRIBE CORNER REFERENCED



STATE PLANE COORDINATE DATA

INDIANA ZONE: WEST

X _____

Y _____

ESTABLISHED BY:

APPROVED BY

DATE

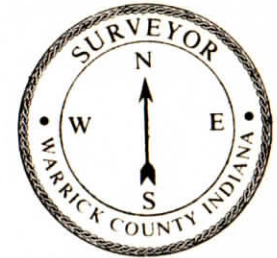
REFERENCED BY:

DATE

Elmo D Dockery

April ~~set~~ 10, 1950

CORNER RECORD
WARRICK COUNTY



DESCRIPTION:

SE CORNER 5/2 W/4 NE 1/4.

SECTION 26, T. 6 S. R. 9 W.

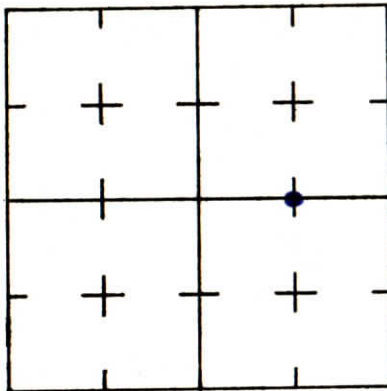
2nd PRINCIPLE MERIDIAN

Glendale

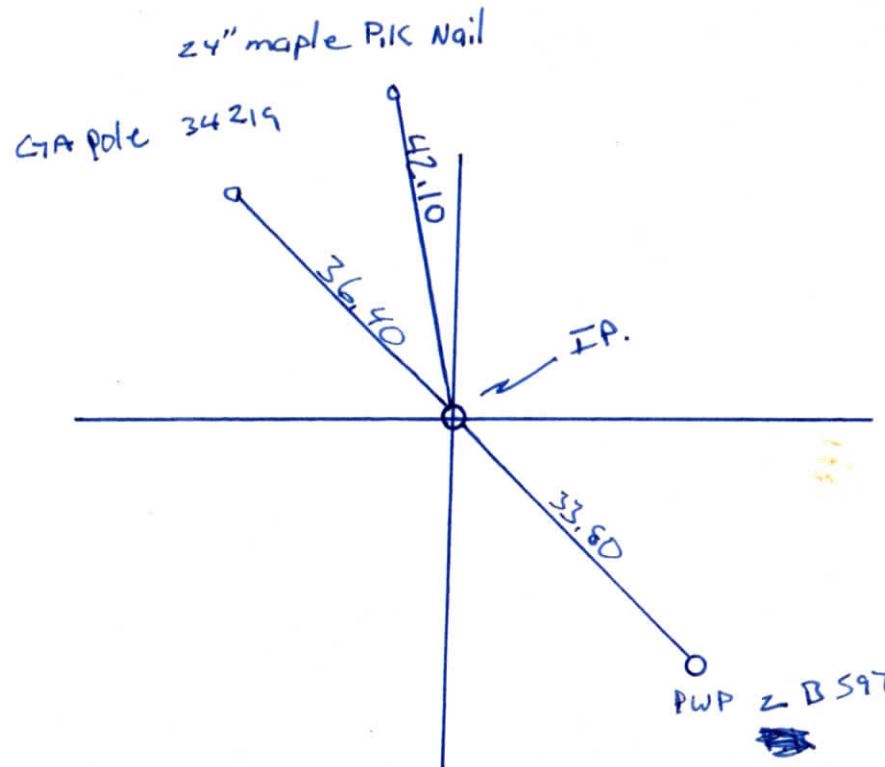
WARRICK COUNTY SURVEYOR

MICHAEL IRVIN

INDICATE CORNER REFERENCED



DESCRIBE CORNER REFERENCED



STATE PLANE COORDINATE DATA

INDIANA ZONE: WEST

X _____

Y _____

ESTABLISHED BY:

APPROVED BY

DATE

REFERENCED BY:

DATE

William Y Bivins

July 10, 1985

CORNER RECORD
WARRICK COUNTY



DESCRIPTION:

SE CORNER NE 1/4 SE 1/4

SECTION 26, T. 6 S. R. 9 W.

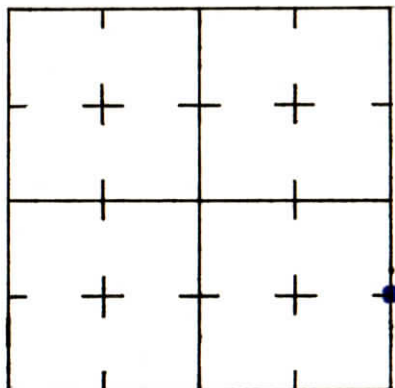
2nd PRINCIPLE MERIDIAN

Brico Subdivision

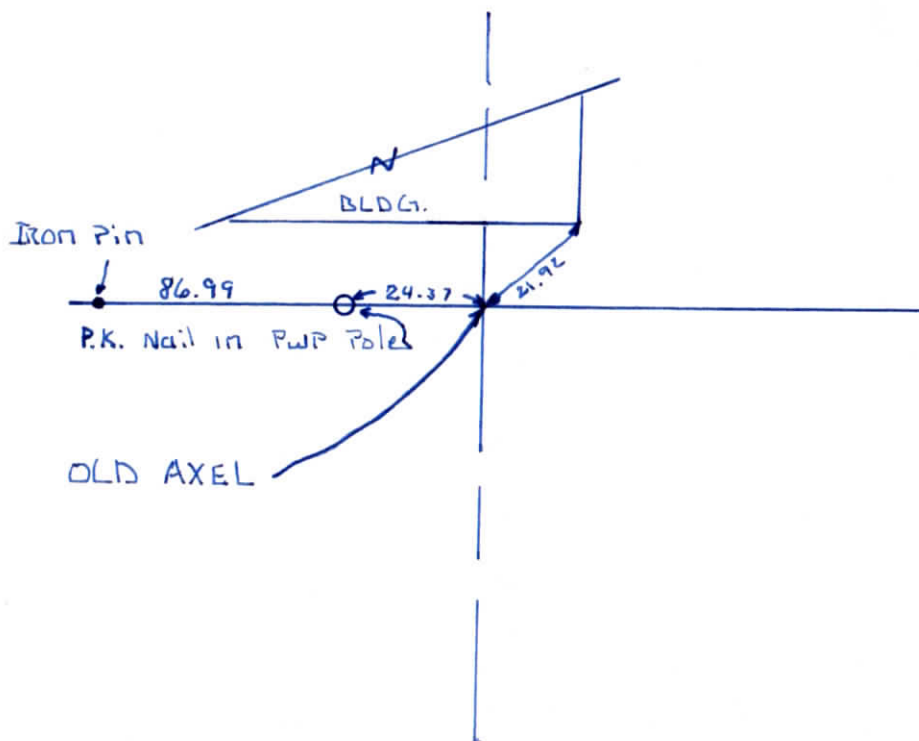
WARRICK COUNTY SURVEYOR

MICHAEL IRVIN

INDICATE CORNER REFERENCED



DESCRIBE CORNER REFERENCED



STATE PLANE COORDINATE DATA

INDIANA ZONE: WEST

X _____

Y _____

ESTABLISHED BY:

APPROVED BY

DATE

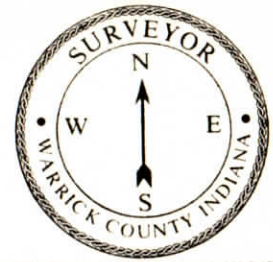
REFERENCED BY:

DATE

Elmo D Dockery

March 12, 1980

CORNER RECORD
WARRICK COUNTY



DESCRIPTION:

SW CORNER NW¹/₄ NW¹/₄

SECTION 26, T. 6 S. R. 9 W.

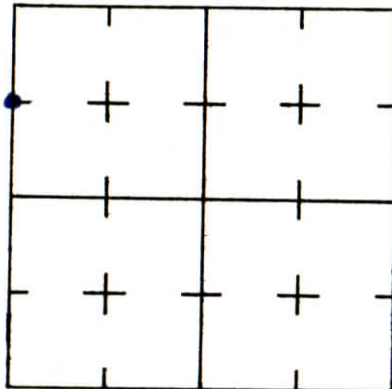
2nd PRINCIPLE MERIDIAN

WARRICK COUNTY SURVEYOR

MICHAEL IRVIN

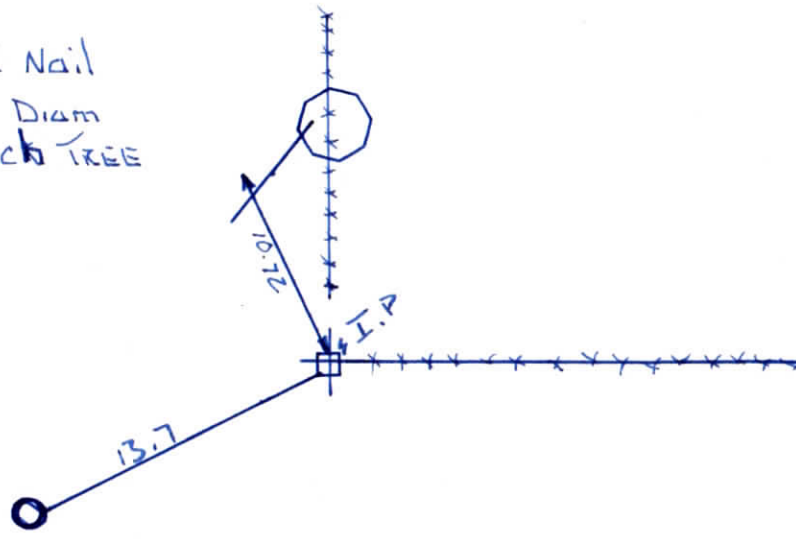
OLDE NEWBURGH Subdivision

INDICATE CORNER REFERENCED



DESCRIBE CORNER REFERENCED

P.K Nail
16" Diam
Beech TREE



4" Steel Post.

STATE PLANE COORDINATE DATA

INDIANA ZONE: WEST

X _____

Y _____

ESTABLISHED BY:

APPROVED BY

DATE

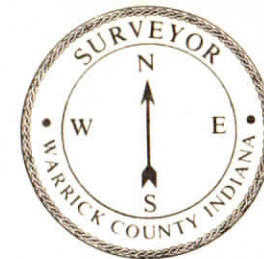
REFERENCED BY:

DATE

Albert K. Holtz

April 7, 1979

CORNER RECORD
WARRICK COUNTY



DESCRIPTION :

SW CORNER NW 1/4 NW 1/4

SECTION 26, T. 6 S. R. 9 W.

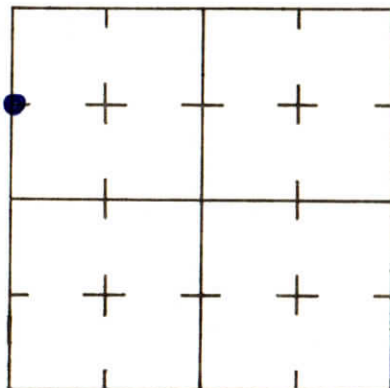
2nd PRINCIPLE MERIDIAN

WARRICK COUNTY SURVEYOR

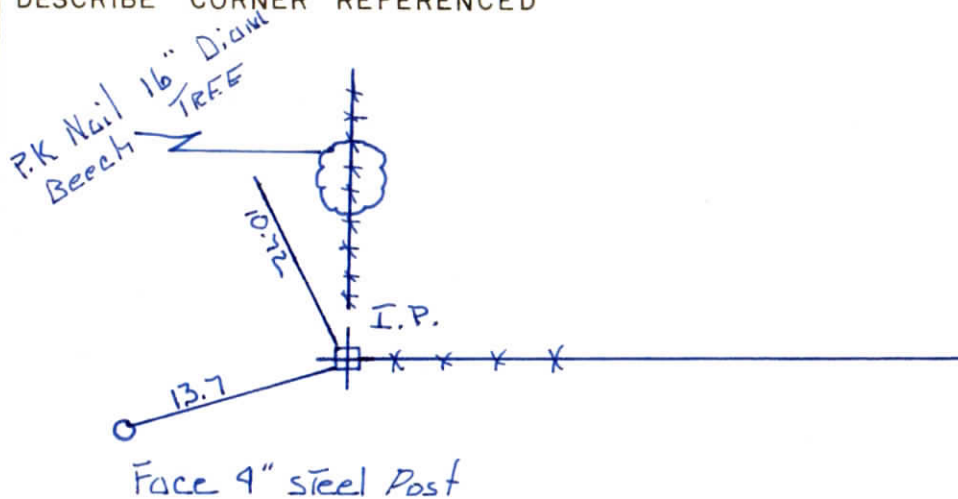
MICHAEL IRVIN

ONE NEWBURGH Subdivision # 297

INDICATE CORNER REFERENCED



DESCRIBE CORNER REFERENCED



STATE PLANE COORDINATE DATA

INDIANA ZONE: WEST

X _____

Y _____

ESTABLISHED BY:

APPROVED BY

DATE

REFERENCED BY:

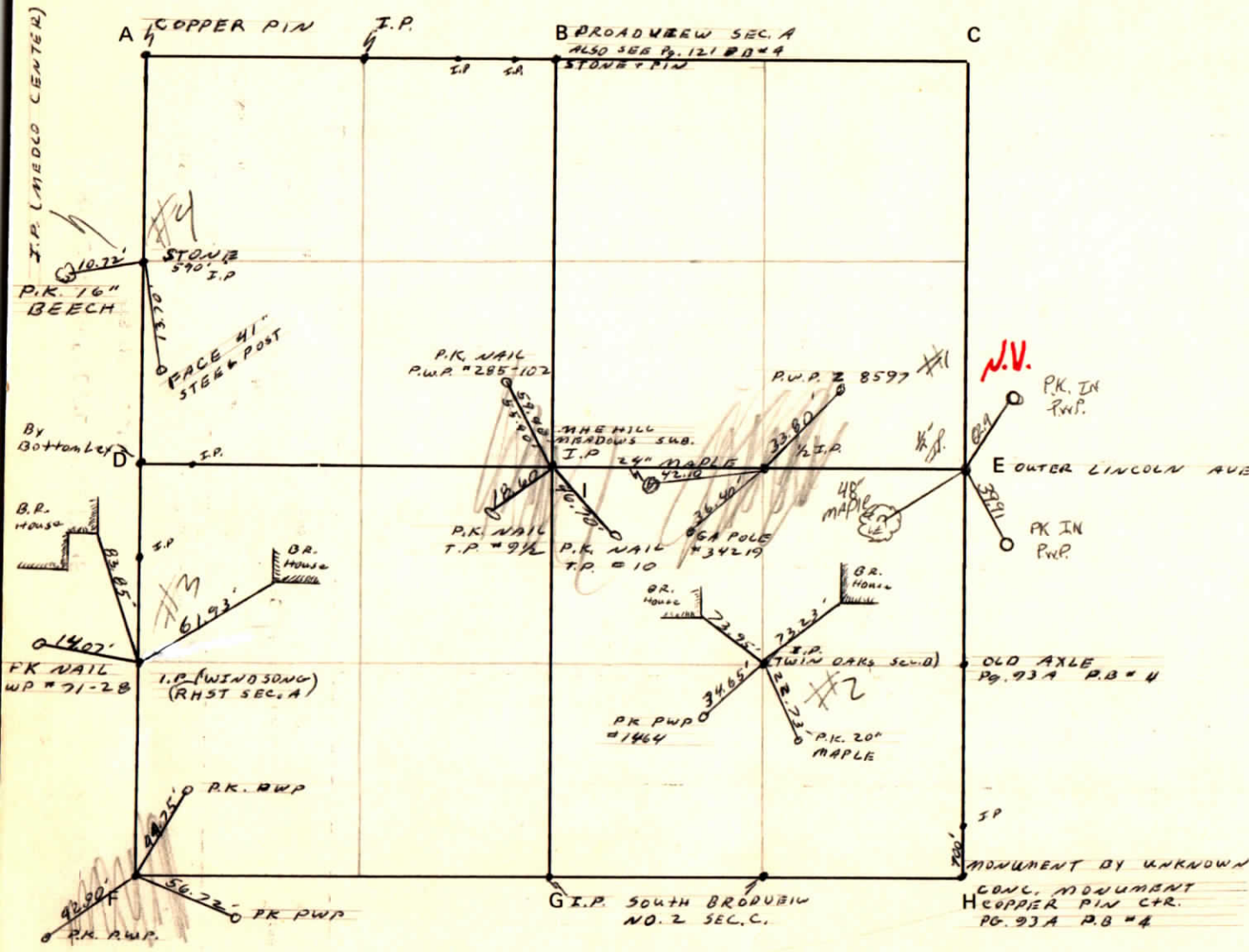
DATE

Albert K. Holtz

April 11, 1979

CORNER CODE SYSTEM
Warrick County

NOTES



RECORD OF SECTION CORNERS

Warrick County

Section _____ Township _____ Range _____ 2nd Principle Meridian

Date	Cor	Description of		Distance from Corner	Azimuth from Corner (North Assumed)	Cond	Check By	Remarks
		Monument	Reference					
	A							
	B							
	C							
	D							
	E							
	F							
	G							
	H							
	I							

CORNER RECORD
WARRICK COUNTY



DESCRIPTION:

NW CORNER sw/4 sw/4

SECTION 26, T. 6 S. R. 9 W.

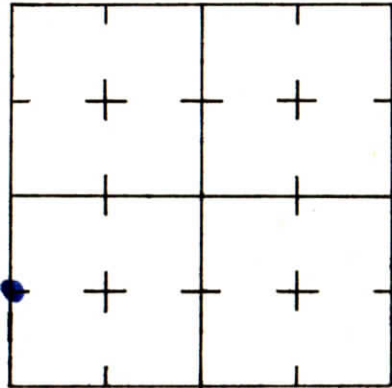
2nd PRINCIPLE MERIDIAN

Franklin Place # 282

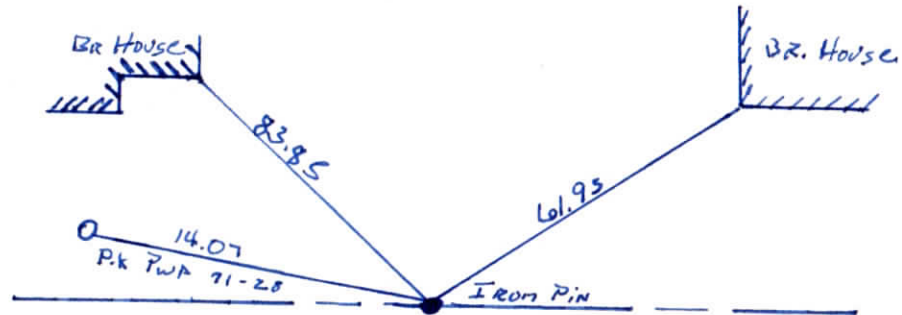
WARRICK COUNTY SURVEYOR

MICHAEL IRVIN

INDICATE CORNER REFERENCED



DESCRIBE CORNER REFERENCED



STATE PLANE COORDINATE DATA

INDIANA ZONE: WEST

X _____

Y _____

ESTABLISHED BY:

APPROVED BY

DATE

REFERENCED BY:

DATE

Edward J Bottomley

May 10, 1978

CORNER RECORD
WARRICK COUNTY



DESCRIPTION:

NW CORNER sw/4 sw/4

SECTION 26, T. 6 S. R. 9 W.

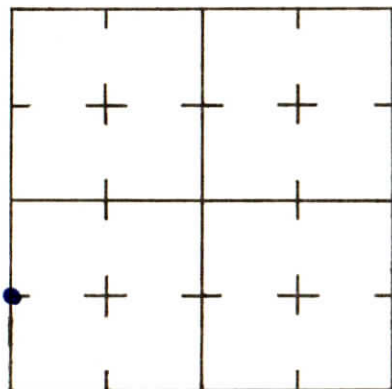
2nd PRINCIPLE MERIDIAN

Franklin Place

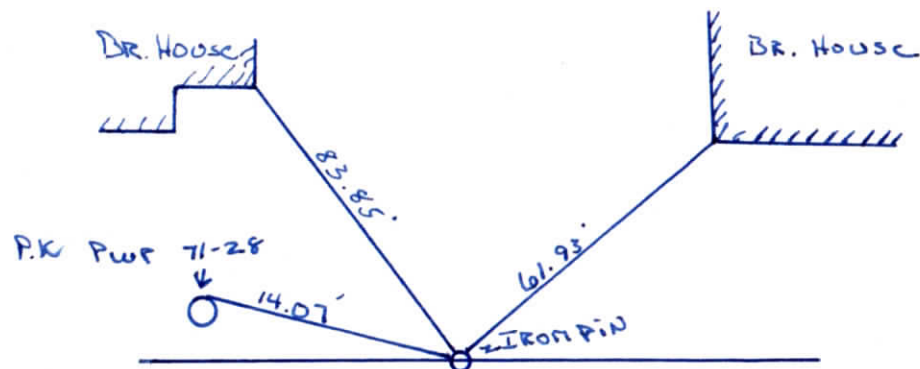
WARRICK COUNTY SURVEYOR

MICHAEL IRVIN

INDICATE CORNER REFERENCED



DESCRIBE CORNER REFERENCED



STATE PLANE COORDINATE DATA

INDIANA ZONE: WEST

X _____

Y _____

ESTABLISHED BY:

APPROVED BY

DATE

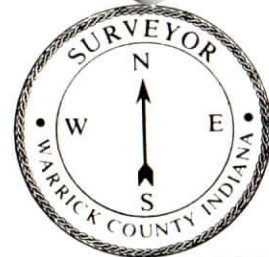
REFERENCED BY:

DATE

Edward J. Bottomley

MAY 10, 1978

CORNER RECORD
WARRICK COUNTY



DESCRIPTION :

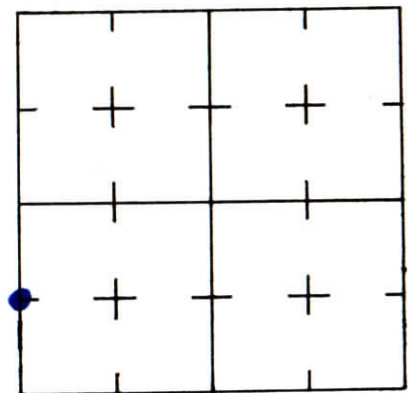
NW CORNER SW¹/₄ SW¹/₄

SECTION 26, T. 6 S. R. 9 W.

2nd PRINCIPLE MERIDIAN

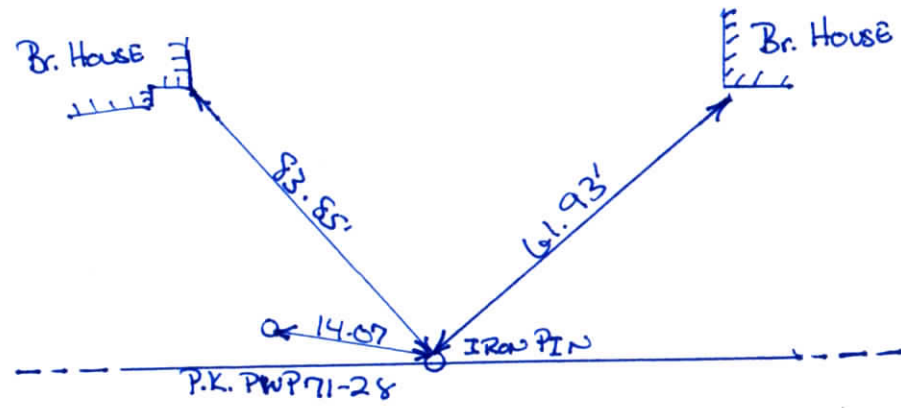
WARRICK COUNTY SURVEYOR
KARAN HARGRAVE-BARNHILL

INDICATE CORNER REFERENCED



DESCRIBE CORNER REFERENCED

FRANKLIN PLACE



STATE PLANE COORDINATE DATA

INDIANA ZONE: WEST

X _____

Y _____

ESTABLISHED BY:

APPROVED BY

DATE

REFERENCED BY:

DATE

EDWARD J. BOTTOMLEY

4-25-76

CORNER RECORD
WARRICK COUNTY



DESCRIPTION:

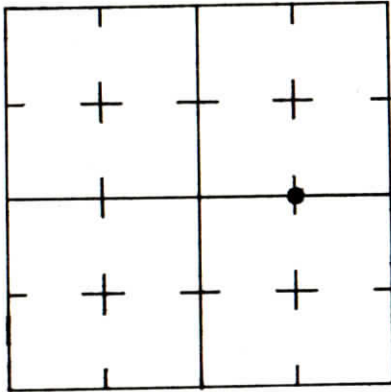
NE CORNER NW¹/₄ SE¹/₄

SECTION 26, T. 6 S. R. 9 W.

2nd PRINCIPLE MERIDIAN

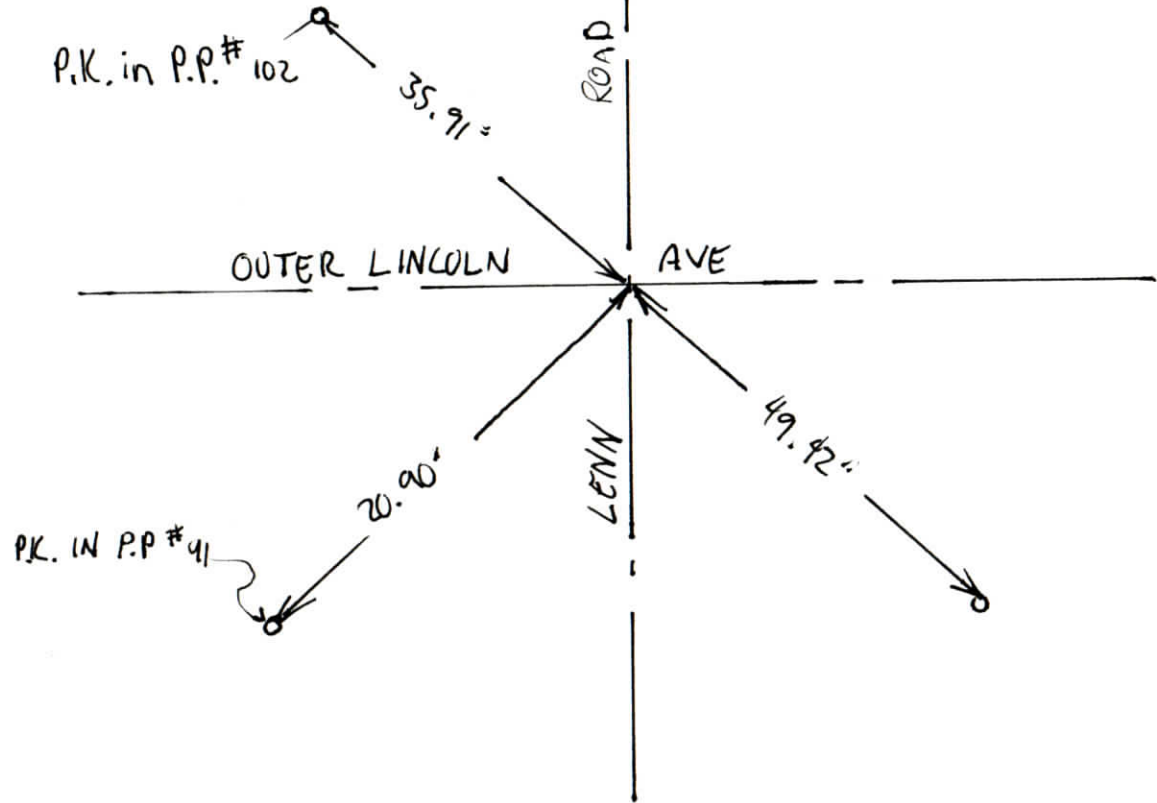
WARRICK COUNTY SURVEYOR
KARAN HARGRAVE-BARNHILL

INDICATE CORNER REFERENCED



DESCRIBE CORNER REFERENCED

EPLĒY ACRES



STATE PLANE COORDINATE DATA

INDIANA ZONE: WEST

X _____

Y _____

ESTABLISHED BY:

APPROVED BY

DATE

REFERENCED BY:

ELMO D. DOCKERY

DATE

FEB 14 1977

CORNER RECORD
WARRICK COUNTY



DESCRIPTION:

NE CORNER NW 1/4 SE 1/4

SECTION 26, T. 6 S. R. 9 W.

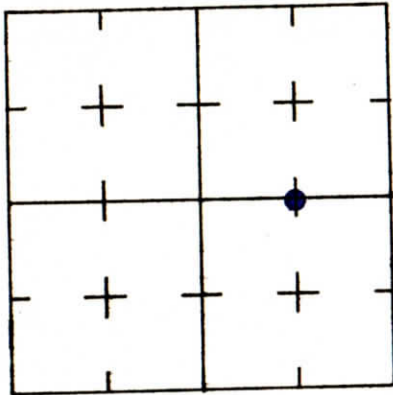
2nd PRINCIPLE MERIDIAN

WARRICK COUNTY SURVEYOR

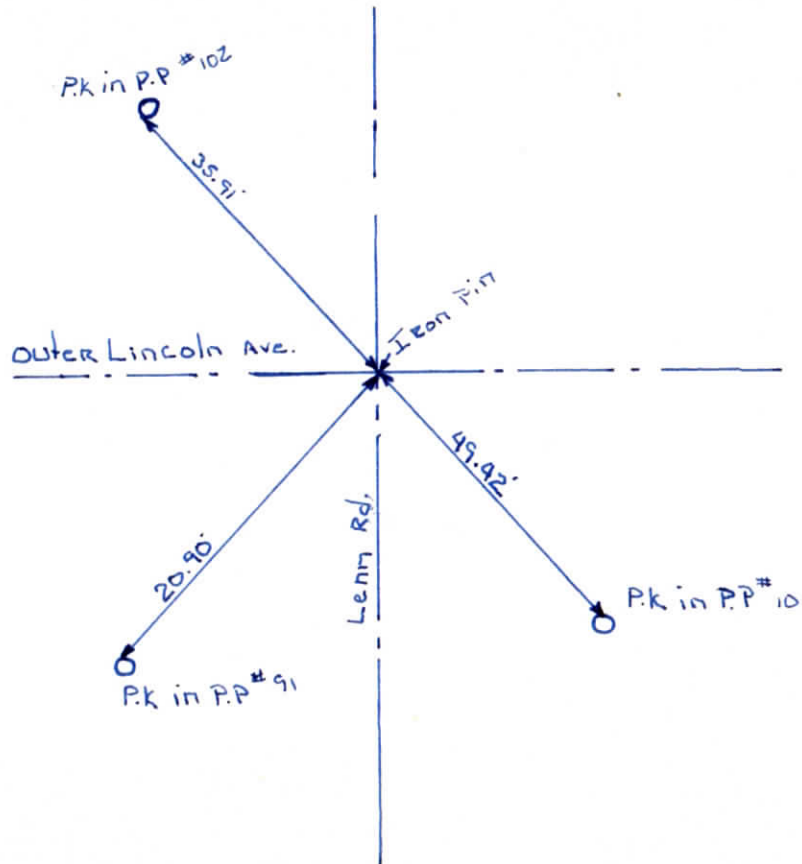
MICHAEL IRVIN

Epley Acres sec "A" #256

INDICATE CORNER REFERENCED



DESCRIBE CORNER REFERENCED



STATE PLANE COORDINATE DATA

INDIANA ZONE: WEST

X _____

Y _____

ESTABLISHED BY:

APPROVED BY

DATE

REFERENCED BY:

DATE

Elmo D Dockery

Approved April 13

1977

CORNER RECORD
WARRICK COUNTY



DESCRIPTION:

SE CORNER E 1/2 N.W. 1/4

SECTION 26, T. 6 S. R. 9 W.

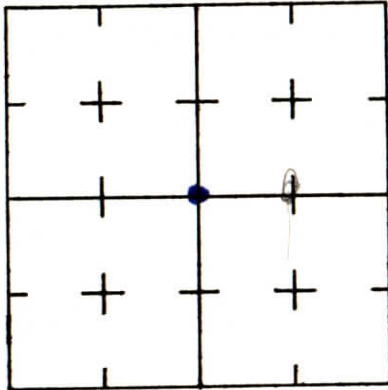
2nd PRINCIPLE MERIDIAN

Mac Hill Meadows Sub Sec. "A" # 234

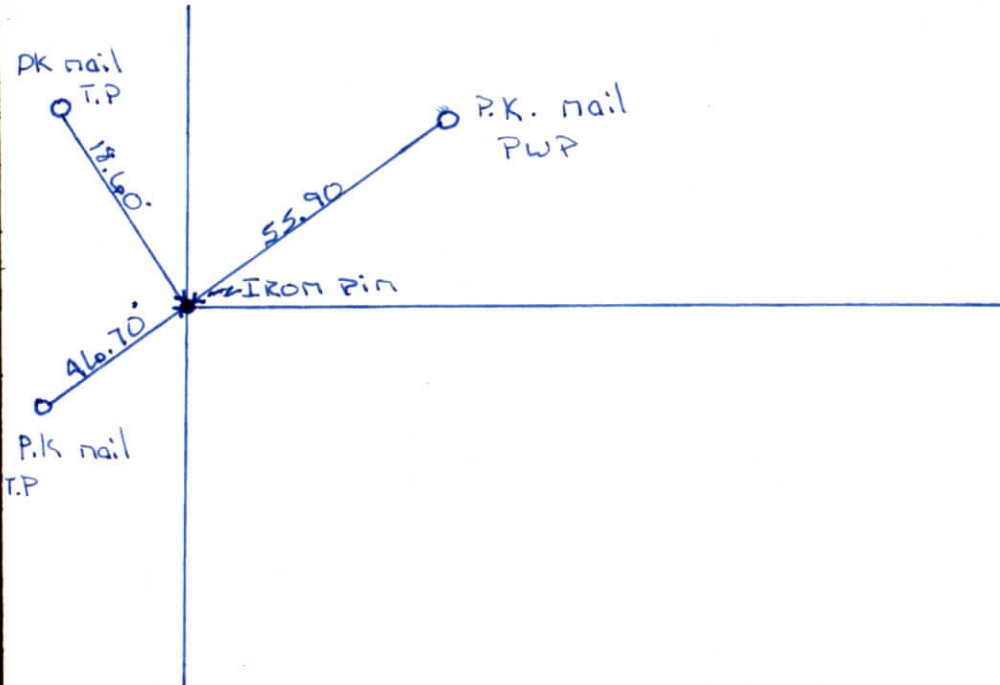
WARRICK COUNTY SURVEYOR

MICHAEL IRVIN

INDICATE CORNER REFERENCED



DESCRIBE CORNER REFERENCED



STATE PLANE COORDINATE DATA

INDIANA ZONE: WEST

X _____

Y _____

ESTABLISHED BY:

APPROVED BY

DATE

REFERENCED BY:

DATE

Elmo D Dockery

June 8, 1977.

CORNER RECORD
WARRICK COUNTY



DESCRIPTION :

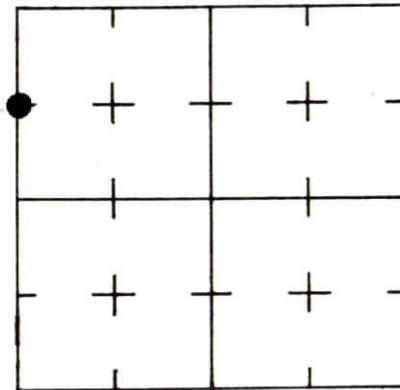
NW CORNER SW 1/4 NW 1/4

SECTION 26, T. 6 S. R. 9 W.

2nd PRINCIPLE MERIDIAN

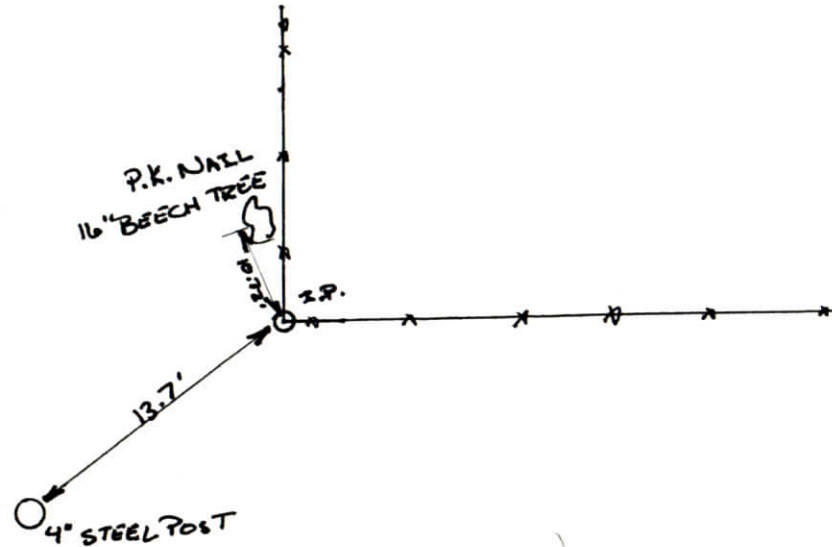
WARRICK COUNTY SURVEYOR
KARAN HARGRAVE-BARNHILL

INDICATE CORNER REFERENCED



DESCRIBE CORNER REFERENCED

MEDCO CENTER



STATE PLANE COORDINATE DATA

INDIANA ZONE: WEST

X _____

Y _____

ESTABLISHED BY:

APPROVED BY

DATE

REFERENCED BY:

DATE

ELMO D. DOCKERY

8-9-76

CORNER RECORD
WARRICK COUNTY



DESCRIPTION:

NE CORNER SW¹/₄ SE¹/₄

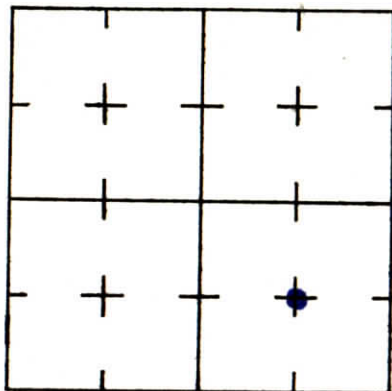
SECTION 26, T. 6 S. R. 9 W.

2nd PRINCIPLE MERIDIAN

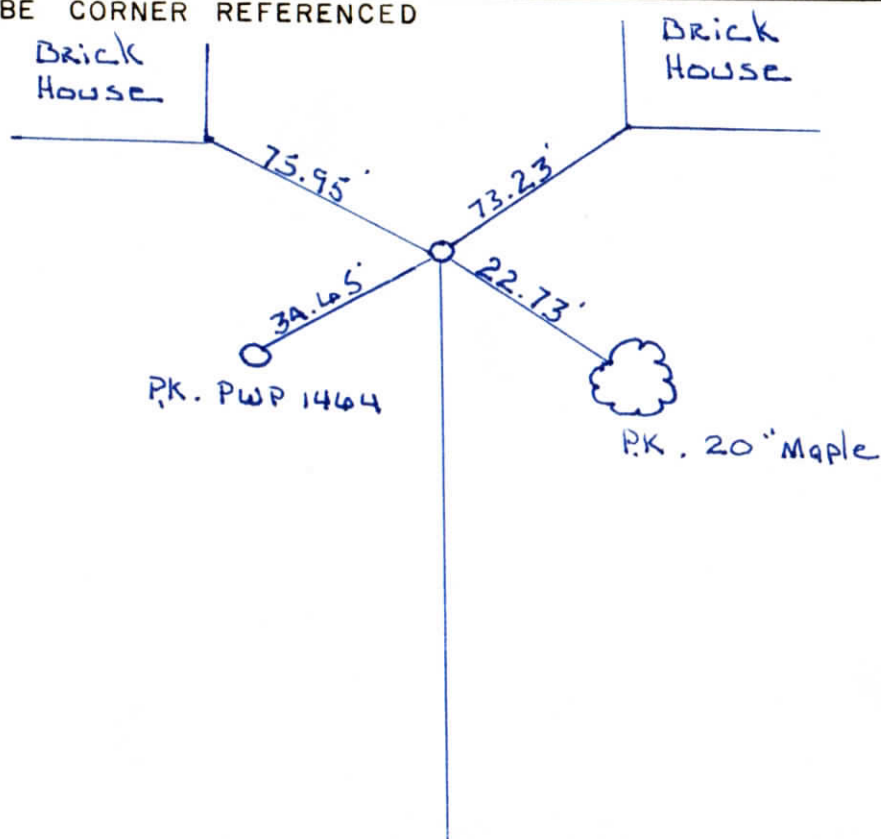
South Broadview No. 2, Sec. 'C' # 238

WARRICK COUNTY SURVEYOR
MICHAEL IRVIN

INDICATE CORNER REFERENCED



DESCRIBE CORNER REFERENCED



STATE PLANE COORDINATE DATA

INDIANA ZONE: WEST

X _____

Y _____

ESTABLISHED BY:

APPROVED BY

DATE

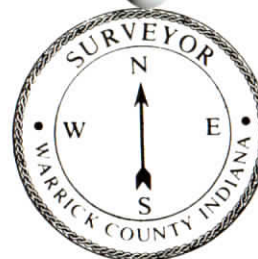
REFERENCED BY:

DATE

Elmo D Dockery

Aug 11, 1976

CORNER RECORD
WARRICK COUNTY



DESCRIPTION:

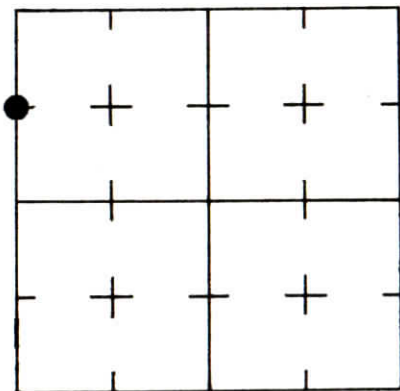
NW CORNER SW¹/₄ NW¹/₄

SECTION 26, T. 6 S. R. 9 W.

2nd PRINCIPLE MERIDIAN

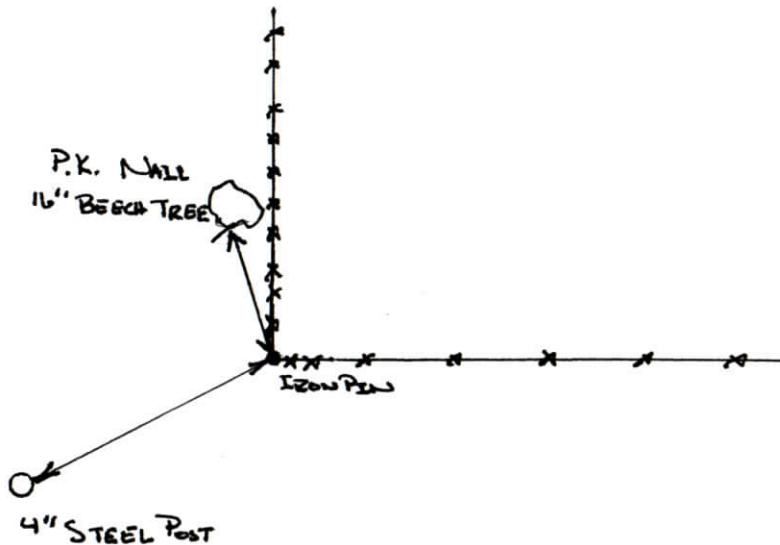
WARRICK COUNTY SURVEYOR
KARAN HARGRAVE-BARNHILL

INDICATE CORNER REFERENCED



DESCRIBE CORNER REFERENCED

NEWBURGH TRADE CENTER



STATE PLANE COORDINATE DATA

INDIANA ZONE: WEST

X _____

Y _____

ESTABLISHED BY:

APPROVED BY

DATE

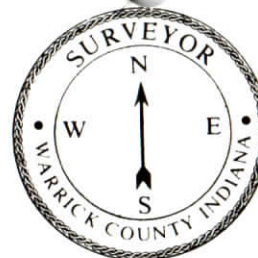
REFERENCED BY:

DATE

ELMO D. DICKERY

6-3-74

CORNER RECORD
WARRICK COUNTY



DESCRIPTION:

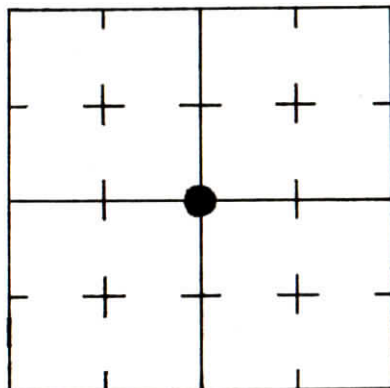
SE CORNER E 1/2 NW 1/4

SECTION 26, T. 6 S. R. 9 W.

2nd PRINCIPLE MERIDIAN

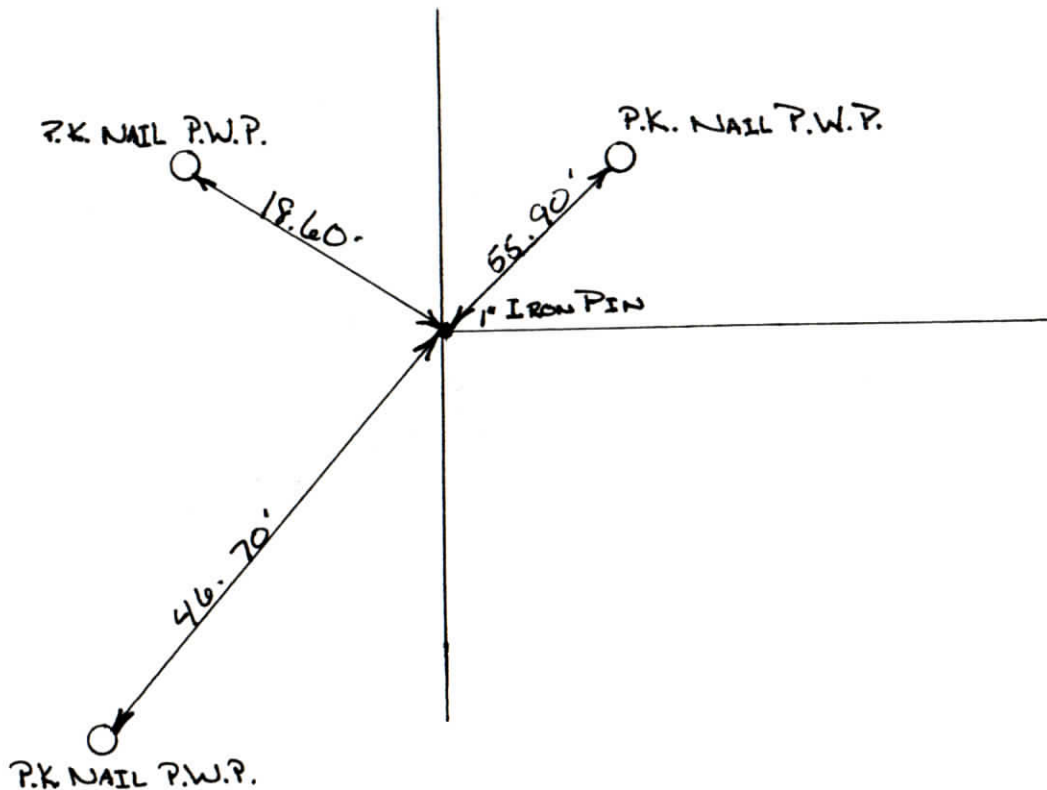
WARRICK COUNTY SURVEYOR
KARAN HARGRAVE-BARNHILL

INDICATE CORNER REFERENCED



DESCRIBE CORNER REFERENCED

MAEHILL MEADOWS SUB.



STATE PLANE COORDINATE DATA

INDIANA ZONE: WEST

X _____

Y _____

ESTABLISHED BY:

APPROVED BY

DATE

REFERENCED BY:

DATE

ELMO D. DOCKERY

11-10-74

CORNER RECORD
WARRICK COUNTY



DESCRIPTION:

NW CORNER NE¹/₄ SE¹/₄

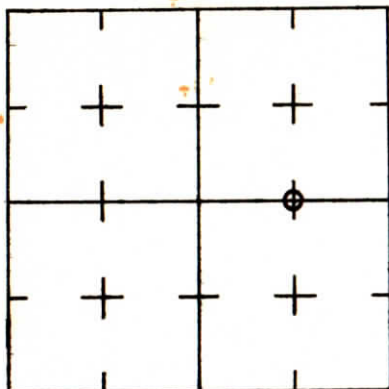
SECTION 26, T. 6 S. R. 9 W.

2nd PRINCIPLE MERIDIAN

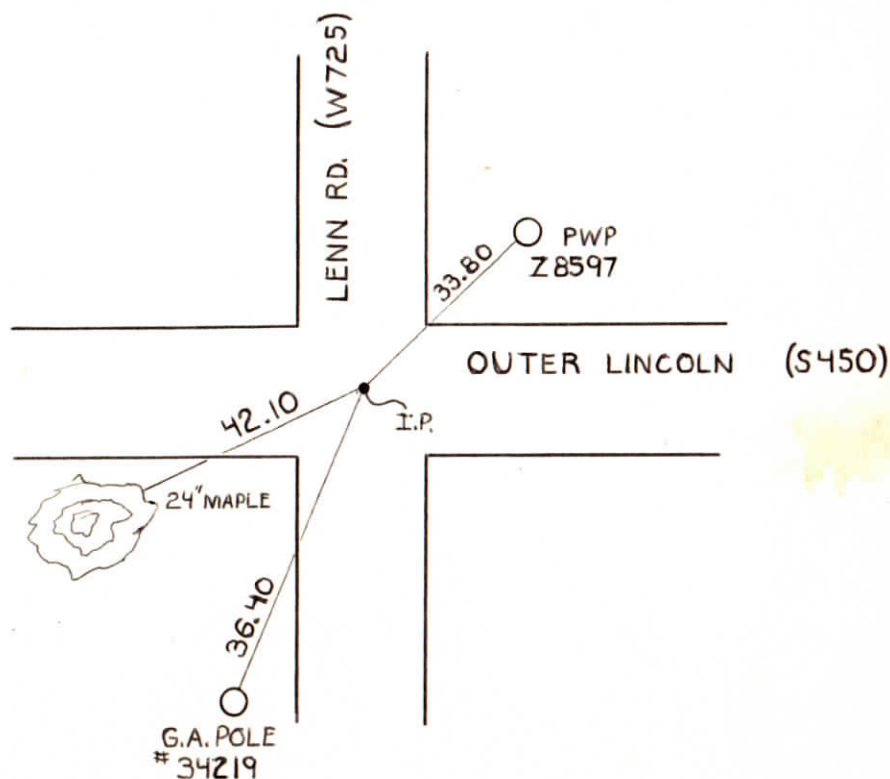
WARRICK COUNTY SURVEYOR

MICHAEL IRVIN

INDICATE CORNER REFERENCED



DESCRIBE CORNER REFERENCED



STATE PLANE COORDINATE DATA

INDIANA ZONE: WEST

X _____

Y _____

ESTABLISHED BY:

APPROVED BY NOT VERIFIED

DATE 4-17-73

REFERENCED BY:


DATE

NW corner NE $\frac{1}{4}$ SE $\frac{1}{4}$ 26-6-9 000009

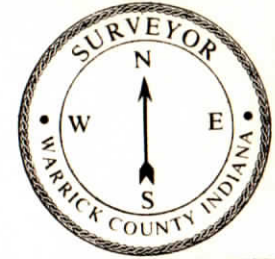
Type of Monument - I.P.

Date 4-17-73

Referenced By - SWC



CORNER RECORD
WARRICK COUNTY



DESCRIPTION:

NW CORNER SE¹/₄

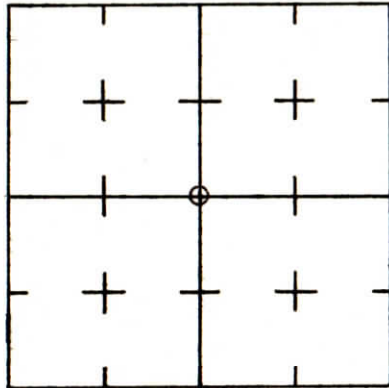
SECTION 26, T. 6 S.

R. 9 W.

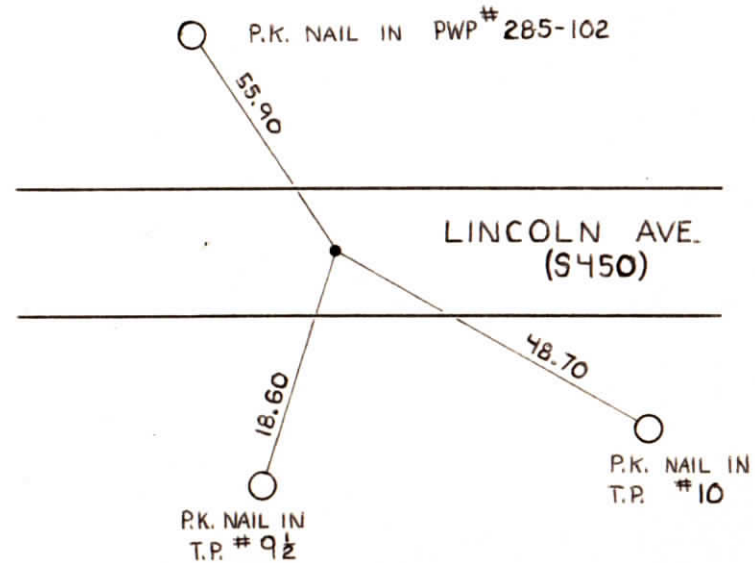
2nd PRINCIPLE MERIDIAN

WARRICK COUNTY SURVEYOR
MICHAEL IRVIN

INDICATE CORNER REFERENCED



DESCRIBE CORNER REFERENCED



STATE PLANE COORDINATE DATA

INDIANA ZONE: WEST

X _____

Y _____

ESTABLISHED BY:

APPROVED BY *NOT VERIFIED*

DATE
4/17/73

REFERENCED BY:

DATE

NW CORNER SE $\frac{1}{4}$ SEC. 26-6-9

000008

entered

TYPE OF MONUMENT - I.P.

DATE 4-17-73

REFERENCED BY - SWC



CORNER RECORD
WARRICK COUNTY



DESCRIPTION:

NW CORNER SW¹/₄ NW¹/₄

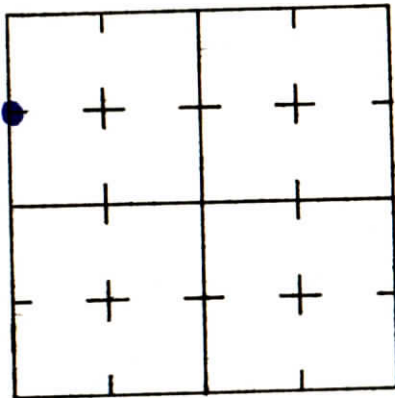
SECTION 26, T. 6 S. R. 9 W.

2nd PRINCIPLE MERIDIAN

Medco Center #243

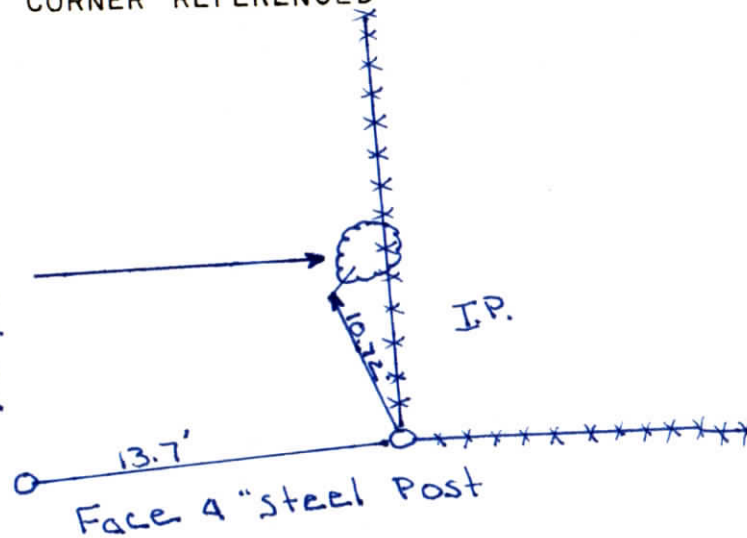
WARRICK COUNTY SURVEYOR
MICHAEL IRVIN

INDICATE CORNER REFERENCED



DESCRIBE CORNER REFERENCED

P.K. Nail
16" DIA.
Beech
Tree



STATE PLANE COORDINATE DATA

INDIANA ZONE: WEST

X _____

Y _____

ESTABLISHED BY:

APPROVED BY

DATE

REFERENCED BY:

DATE

Elmo D Dockery

Aug 11, 1976

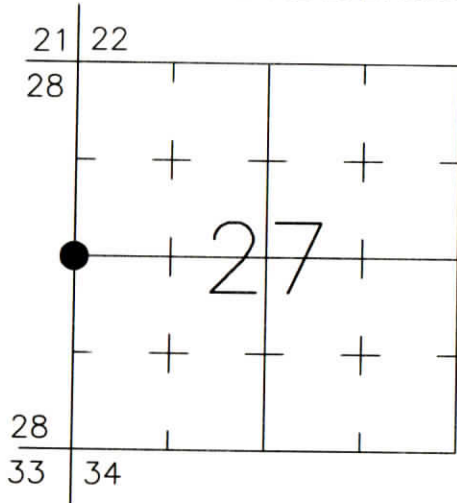
CORNER RECORD
WARRICK COUNTY



DESCRIPTION:
SOUTHWEST CORNER NORTHWEST QUARTER
SECTION 27, T. 6 S., R. 9 W.
2nd PRINCIPLE MERIDIAN

WARRICK COUNTY SURVEYOR
KARAN HARGRAVE-BARNHILL

INDICATE CORNER REFERENCED:



MONUMENT TYPE: IRON PIPE (Partially Pinched)
SIZE: 1-1/4" O.D.
DEPTH/HEIGHT: 4" BELOW GRADE
REFERENCE TIE DRAWING:

FOR NOTES ON CORNER HISTORY SEE REVERSE.

STATE PLANE COORDINATE DATA:
INDIANA WEST ZONE, NAD 83 (1997)
U.S. SURVEY FEET

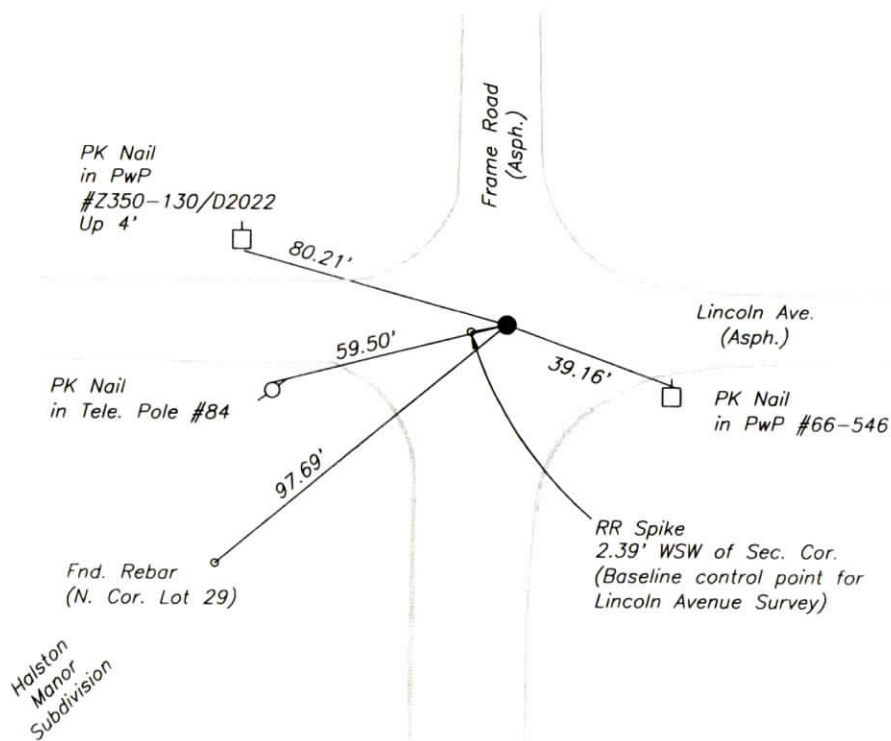
X _____

Y _____

COORDINATES ESTABLISHED BY:

APPROVED BY:

DATE:



REFERENCED BY: D.DREES/G.M.BURRESS

DATE: 9/3/02

APPROVED BY: P.JONES, RLS#9600016

DATE: 3/12/03

CORNER FILE CODE:
T6S-R9W-T-13

CORNER HISTORY:

CORNER FILE CODE:
T6S-R9W-T-13

ORIGINAL USPLS SURVEY: Corner established by Jacob Fowler, Dec. 19, 1805 "Post".

COUNTY SURVEYOR'S BOOKS: Book 1 P. 56: W.B. Wright WCS Nov. 1, 1855 "Stone".

Book 4 P. 250 C.Warren Abbot & Geo. Reynolds Aug. 28, 1949 "Iron Pin" (54.8' SW Pwp, 72.7' SE Pwp, 51' NW Pwp, 62.8' NE to tree in yard)

OTHER SURVEYS AND PLATS: "Corner Record" cards include a 1973 reference to IP, and a 1996 reference to a 1" iron pipe as taken from the plat of Fieldstone Section "B".

A 5/8" O.D. iron pipe was tied in and referenced on the Bell Road Route Survey (Bernardin-Lochmueller & Assoc. 1989, unrecorded).

Lincoln Ave. Route Survey (Bernardin-Lochmueller & Assoc. 1990, unrecorded) tied in and referenced a railroad spike 1-1/2" below grade. (Coordinate ties to the Bell Road survey showed little difference in position from the 5/8" O.D. pipe previously described.)

A plat of survey by Steven A. Sherwood (Doc. 2001-008743) shows a 5/8" iron rod 4" below grade.

VERIFICATION OF CORNER POSITION: March, 2003; the 1-1/4" pipe shown was found in place, the top of the pipe partially pinched in (which may account for the variety of previous descriptions). Reference ties from the 1990 Lincoln survey were checked to confirm the position was the same. Ties were made to lot corner monuments in Halston Manor Subdivision and Fieldstone Section "B" which agreed within 0.2' of plat dimensions.

Perry E. Jones 3/12/03

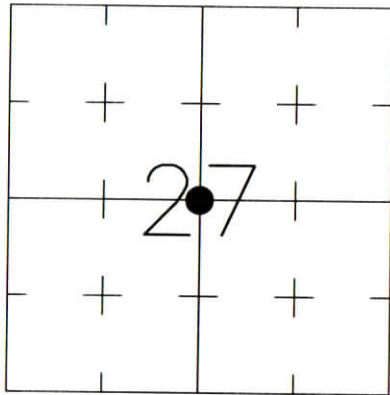
CORNER RECORD
WARRICK COUNTY



DESCRIPTION:
SOUTHWEST CORNER NORTHEAST QUARTER
SECTION 27, T. 6 S., R. 9 W.
2nd PRINCIPLE MERIDIAN

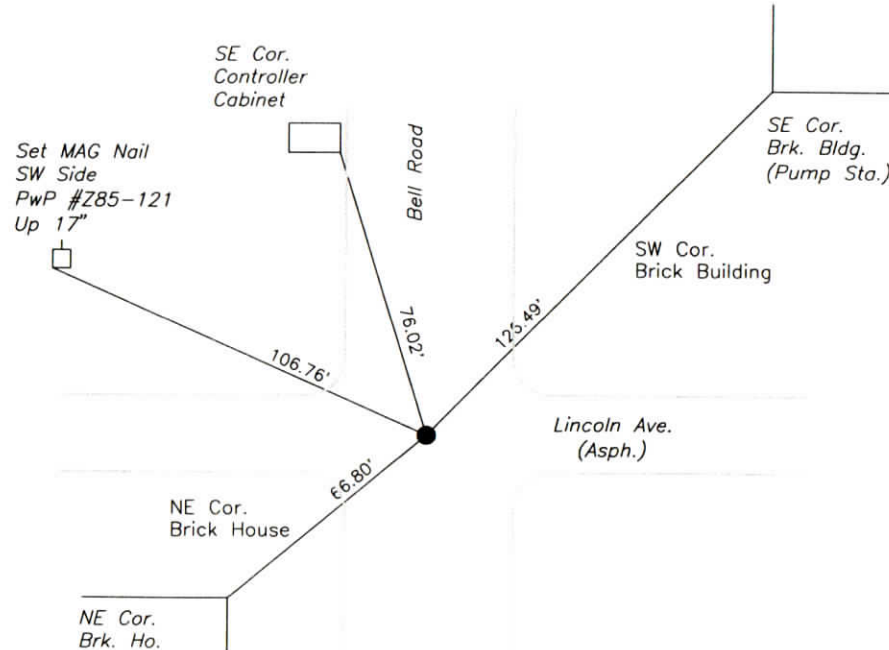
WARRICK COUNTY SURVEYOR
KARAN HARGRAVE-BARNHILL

INDICATE CORNER REFERENCED:



MONUMENT TYPE: IRON ROD IN CONC.
SIZE: 3/4" DIA.
DEPTH/HEIGHT: FLUSH
REFERENCE TIE DRAWING:

FOR NOTES ON CORNER HISTORY SEE REVERSE.



STATE PLANE COORDINATE DATA:
INDIANA WEST ZONE, NAD 83 (1997)
U.S. SURVEY FEET

X _____

Y _____

COORDINATES ESTABLISHED BY:

APPROVED BY:

DATE:

REFERENCED BY: D.DREES/G.M.BURRESS

DATE: 9/3/02

APPROVED BY: P.JONES, RLS#9600016

DATE: 9/27/02

CORNER FILE CODE:
T6S-R9W-T-15

CORNER HISTORY:

CORNER FILE CODE:
T6S-R9W-T-15

ORIGINAL USPLS SURVEY: (Center of Section not monumented by USPLS Survey)

COUNTY SURVEYOR'S BOOKS: Book 1 P. 56: W.B. Wright WCS Nov. 1, 1855 Stone"

OTHER SURVEYS AND PLATS: "Corner Record" cards include a 1973 reference (monument not described) and a 1993 reference to an IP as taken from the plat of Fieldstone Sec. "A".

A 1" O.D. iron pipe was tied in and referenced on the Bell Road Route Survey (Bernardin-Lochmueller & Assoc. 1989, unrecorded) and on the Lincoln Ave. Route Survey (Bernardin-Lochmueller & Assoc. 1990, unrecorded). This corner was later re-monumented during the reconstruction of Bell Road.

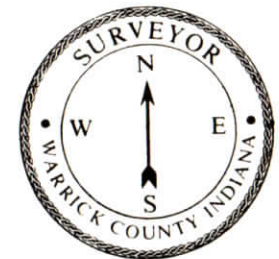
A 3/4" iron pipe is shown on an Exempt Division by Danny Leek (Doc. 1996R-011552)

A 3/4" iron pin in concrete is shown on the plat of Riverwood (Doc. 2000R001279)

VERIFICATION OF CORNER POSITION: September, 2002: The 3/4" iron rod in concrete placed during the Bell Road reconstruction project was found in place.

Perry E. Jones 9/27/02

**CORNER RECORD
WARRICK COUNTY**



DESCRIPTION :

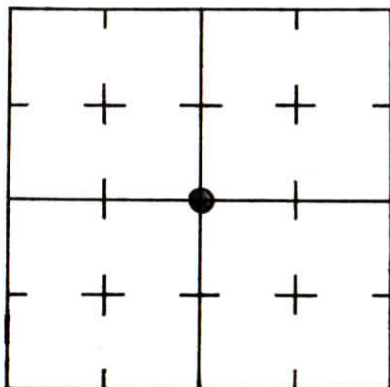
SE CORNER NW¼

SECTION 27, T. 6 S. R. 9 W.

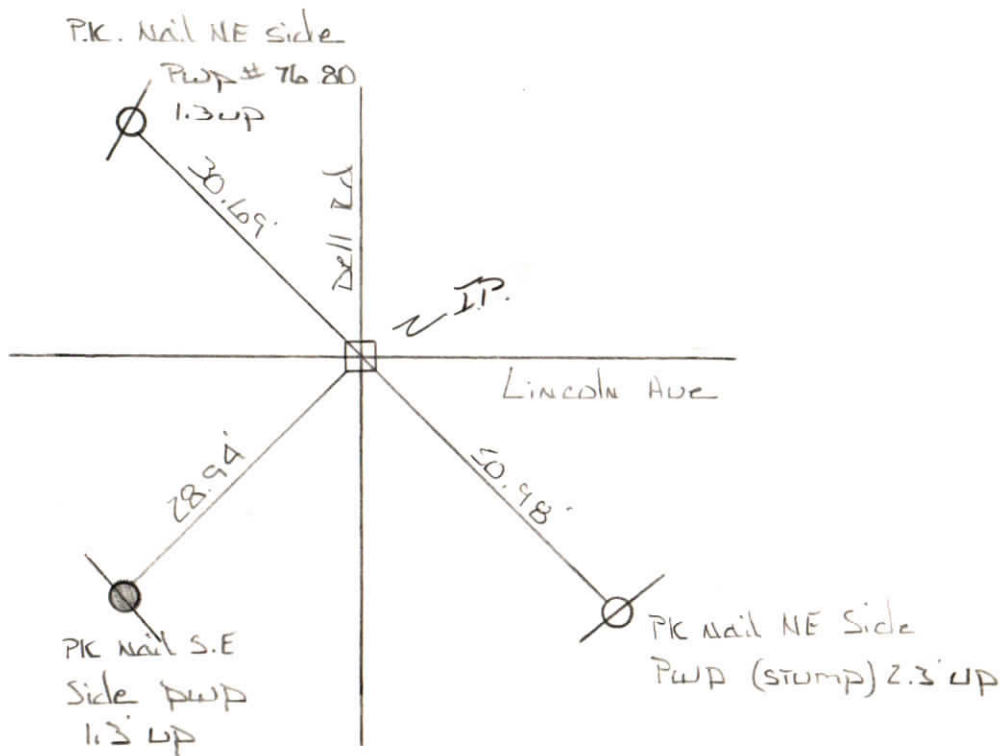
2nd PRINCIPLE MERIDIAN

**WARRICK COUNTY SURVEYOR
MICHAEL IRVIN**

INDICATE CORNER REFERENCED



DESCRIBE CORNER REFERENCED



STATE PLANE COORDINATE DATA

INDIANA ZONE: WEST

X _____

Y _____

ESTABLISHED BY:

APPROVED BY

DATE

REFERENCED BY:

DATE

Andy Eastley Jr

SEPT 22 / 1993

**CORNER RECORD
WARRICK COUNTY**



DESCRIPTION :

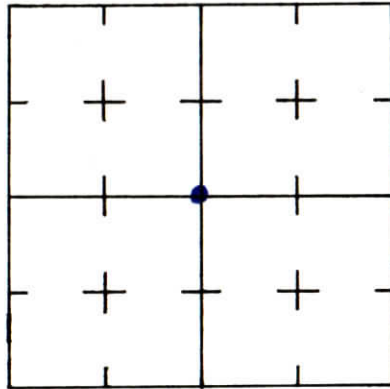
SE CORNER NW¹/₄

SECTION 27, T. 6 S. R. 9 W.

2nd PRINCIPLE MERIDIAN

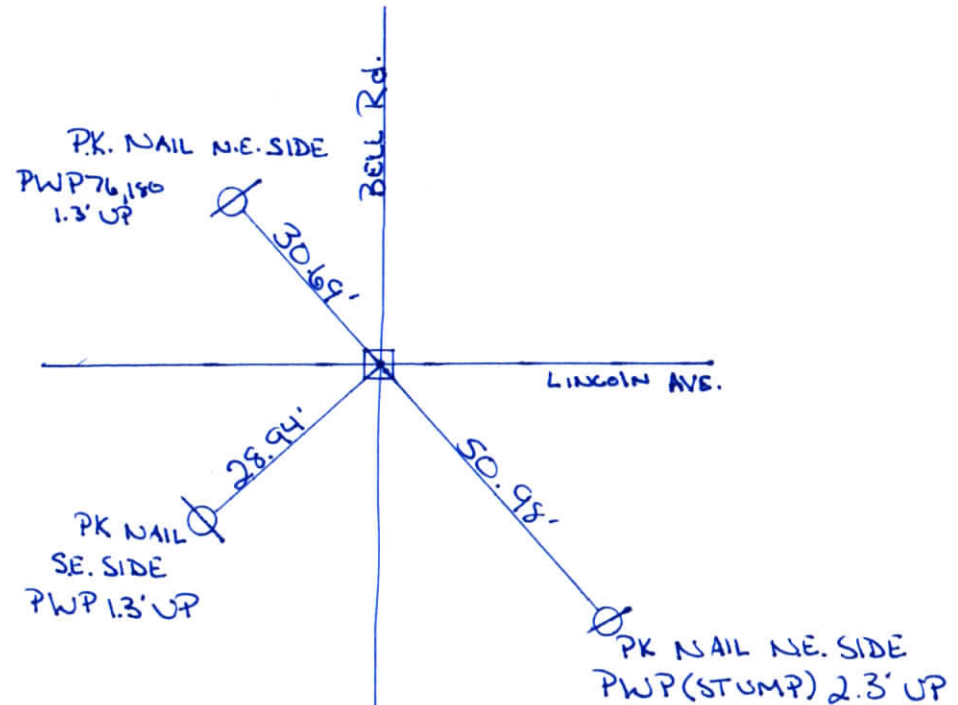
**WARRICK COUNTY SURVEYOR
KARAN HARGRAVE-BARNHILL**

INDICATE CORNER REFERENCED



DESCRIBE CORNER REFERENCED

*FIELDSTONE
Section "A"*



STATE PLANE COORDINATE DATA

INDIANA ZONE: WEST

X _____

Y _____

ESTABLISHED BY:

APPROVED BY

DATE

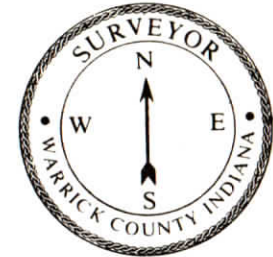
REFERENCED BY:

DATE

RALPH A. FASLEY SR.

6-9-93

**CORNER RECORD
WARRICK COUNTY**



DESCRIPTION :

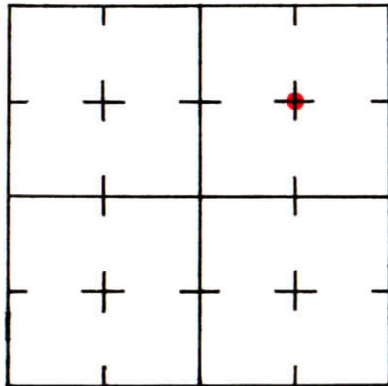
SW CORNER NE 1/4 NE 1/4

SECTION 27, T. 6 S. R. 9 W.

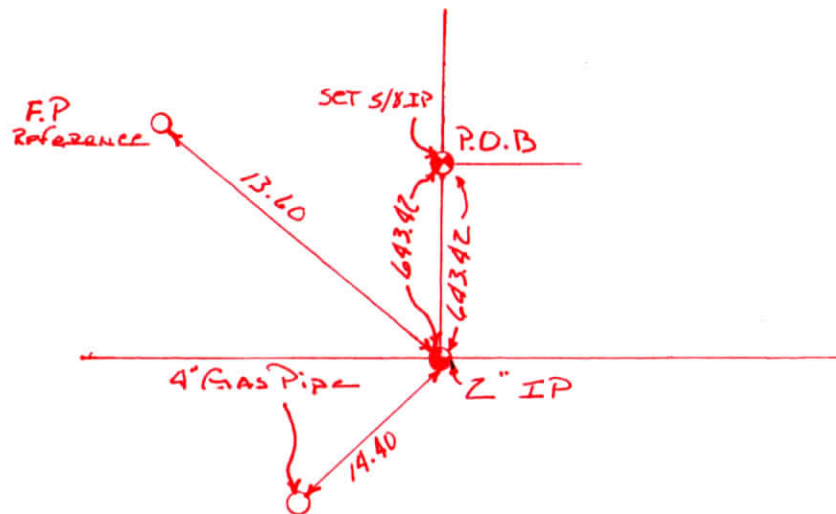
2nd PRINCIPLE MERIDIAN

**WARRICK COUNTY SURVEYOR
MICHAEL IRVIN**

INDICATE CORNER REFERENCED



DESCRIBE CORNER REFERENCED



STATE PLANE COORDINATE DATA

INDIANA ZONE: WEST

X _____

Y _____

ESTABLISHED BY:

APPROVED BY

DATE

REFERENCED BY:

DATE

Elmo Dockery

1/13/93

CORNER RECORD
WARRICK COUNTY



DESCRIPTION:

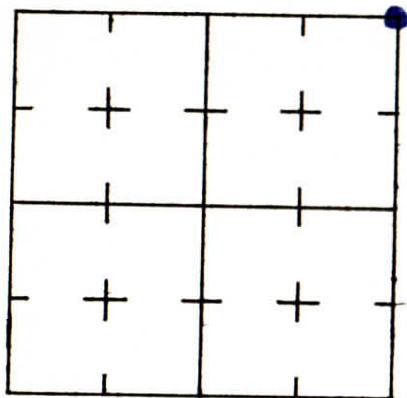
NE CORNER NE¹/₄ NE¹/₄
SECTION 27, T. 6 S. R. 9 W.

2nd PRINCIPLE MERIDIAN

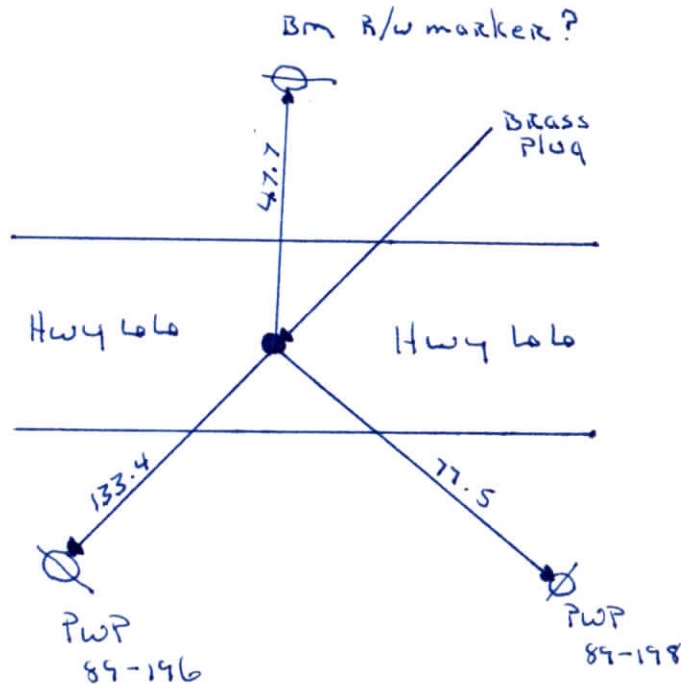
High Point Centre sec "C" #4666

WARRICK COUNTY SURVEYOR
MICHAEL IRVIN

INDICATE CORNER REFERENCED



DESCRIBE CORNER REFERENCED



STATE PLANE COORDINATE DATA

INDIANA ZONE: WEST

X _____

Y _____

ESTABLISHED BY:

APPROVED BY

DATE

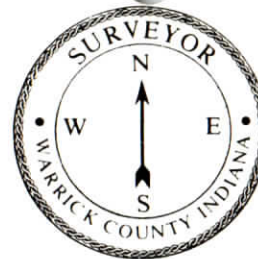
REFERENCED BY:

Elmo D Dockery

DATE

April 10, 1991

CORNER RECORD
WARRICK COUNTY



DESCRIPTION:

NE CORNER NE 1/4 NE 1/4

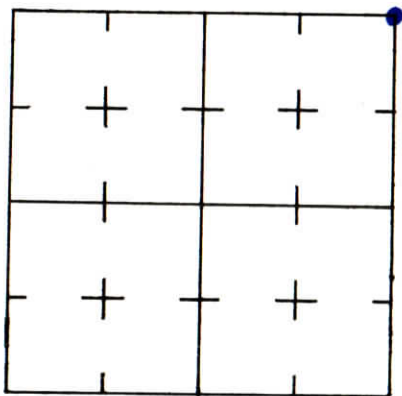
SECTION 27, T. 6 S.

R. 9 W.

2nd PRINCIPLE MERIDIAN

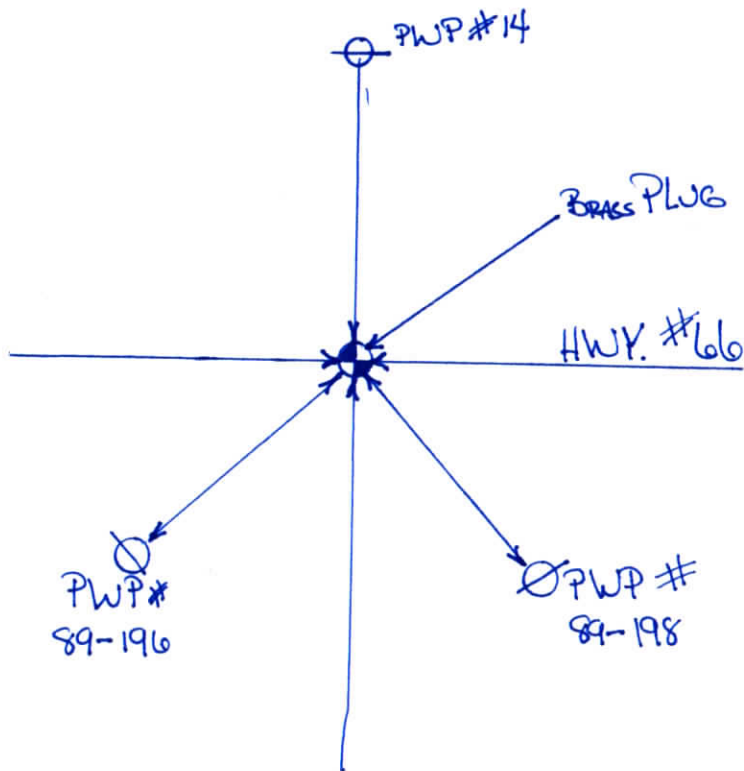
WARRICK COUNTY SURVEYOR
KARAN HARGRAVE-BARNHILL

INDICATE CORNER REFERENCED



DESCRIBE CORNER REFERENCED

HIGHPOINTE CENTRE (Sec A)



STATE PLANE COORDINATE DATA

INDIANA ZONE: WEST

X _____

Y _____

ESTABLISHED BY:

APPROVED BY

DATE

REFERENCED BY:

DATE

ELMO D. DOCKERY

2-20-90

CORNER RECORD
WARRICK COUNTY



DESCRIPTION:

NW CORNER NW/4 NW/4

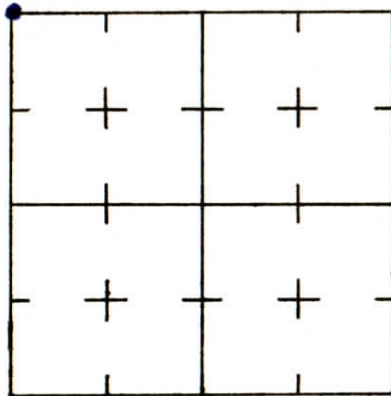
SECTION 27, T. 6 S. R. 9 W.

2nd PRINCIPLE MERIDIAN

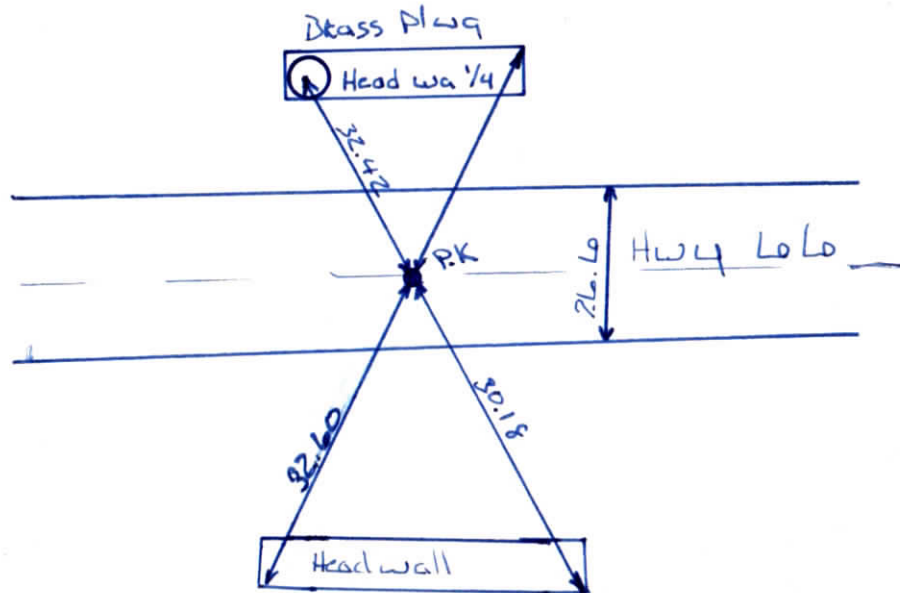
Gardner Subdivision

WARRICK COUNTY SURVEYOR
MICHAEL IRVIN

INDICATE CORNER REFERENCED



DESCRIBE CORNER REFERENCED



STATE PLANE COORDINATE DATA

INDIANA ZONE: WEST

X _____

Y _____

ESTABLISHED BY:

APPROVED BY

DATE

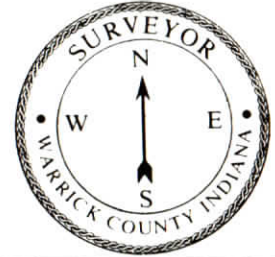
REFERENCED BY:

DATE

Elmo D Dockery

July 12, 1985

CORNER RECORD
WARRICK COUNTY



DESCRIPTION :

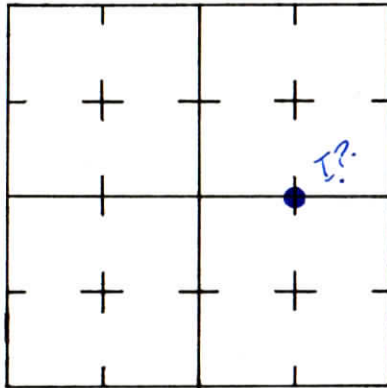
SE CORNER NE 1/4 NW 1/4

SECTION 27, T. 6 S. R. 9 W.

2nd PRINCIPLE MERIDIAN

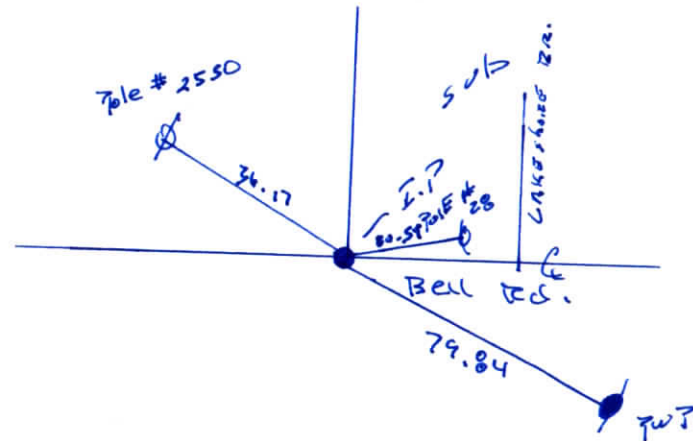
WARRICK COUNTY SURVEYOR
KARAN HARGRAVE-BARNHILL

INDICATE CORNER REFERENCED



DESCRIBE CORNER REFERENCED

Bell Oaks place



STATE PLANE COORDINATE DATA

INDIANA ZONE: WEST

X _____

Y _____

ESTABLISHED BY:

APPROVED BY

DATE

REFERENCED BY:

DATE

Digger skull

3-1-80

CORNER RECORD
WARRICK COUNTY



DESCRIPTION :

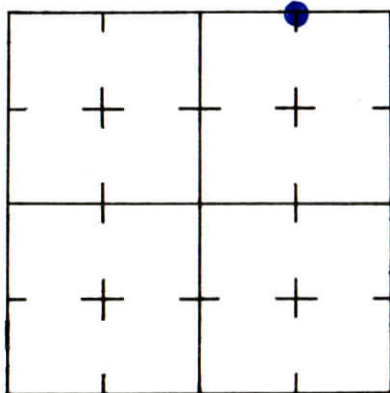
NE CORNER NE 1/4 NW 1/4

SECTION 27, T. 6 S. R. 9 W.

2nd PRINCIPLE MERIDIAN

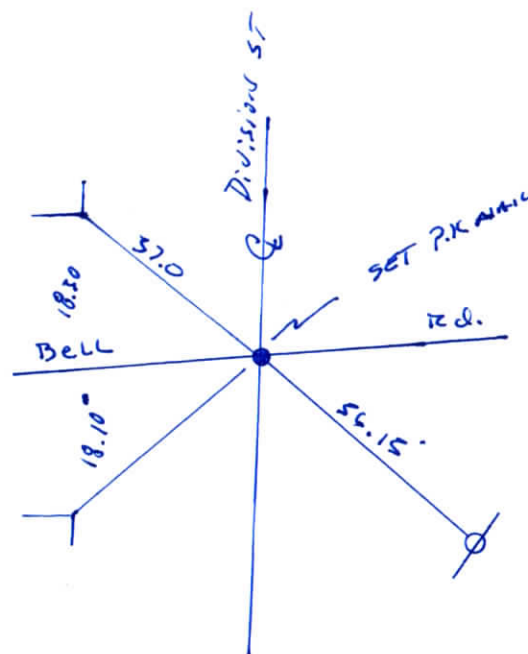
WARRICK COUNTY SURVEYOR
KARAN HARGRAVE-BARNHILL

INDICATE CORNER REFERENCED



DESCRIBE CORNER REFERENCED

Bell Oaks Sub.



STATE PLANE COORDINATE DATA

INDIANA ZONE: WEST

X _____

Y _____

ESTABLISHED BY:

APPROVED BY:

DATE

REFERENCED BY:

Bissegstaff

DATE

3-1-08

CORNER RECORD
WARRICK COUNTY



DESCRIPTION:

NW CORNER NW 1/4 NW 1/4

SECTION 27, T. 6 S. R. 9 W.

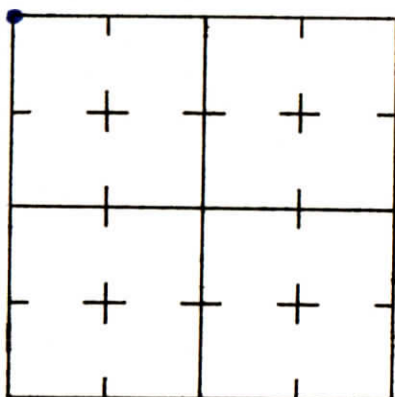
2nd PRINCIPLE MERIDIAN

HILLSIDE Terrace

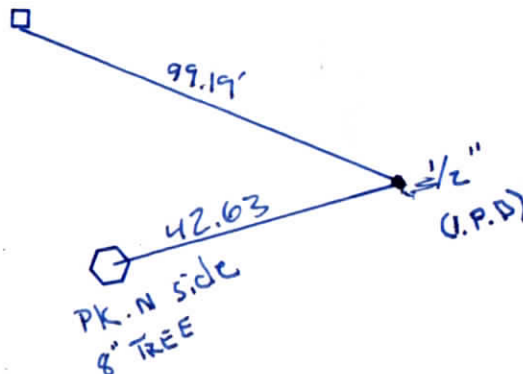
WARRICK COUNTY SURVEYOR

MICHAEL IRVIN

INDICATE CORNER REFERENCED



DESCRIBE CORNER REFERENCED



STATE PLANE COORDINATE DATA

INDIANA ZONE: WEST

X _____

Y _____

ESTABLISHED BY:

APPROVED BY

DATE

REFERENCED BY:

DATE

Jerrey V. Schmits

July 11 1984

CORNER RECORD
WARRICK COUNTY



DESCRIPTION:

NW CORNER SW 1/4 SE 1/4

SECTION 27, T. 6 S. R. 9 W.

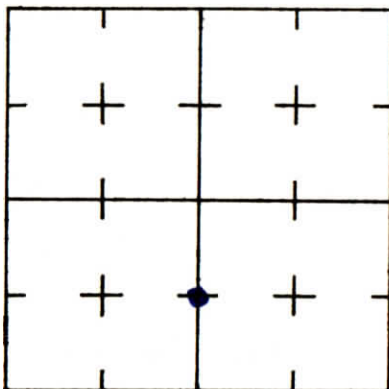
2nd PRINCIPLE MERIDIAN

Locust Ridge

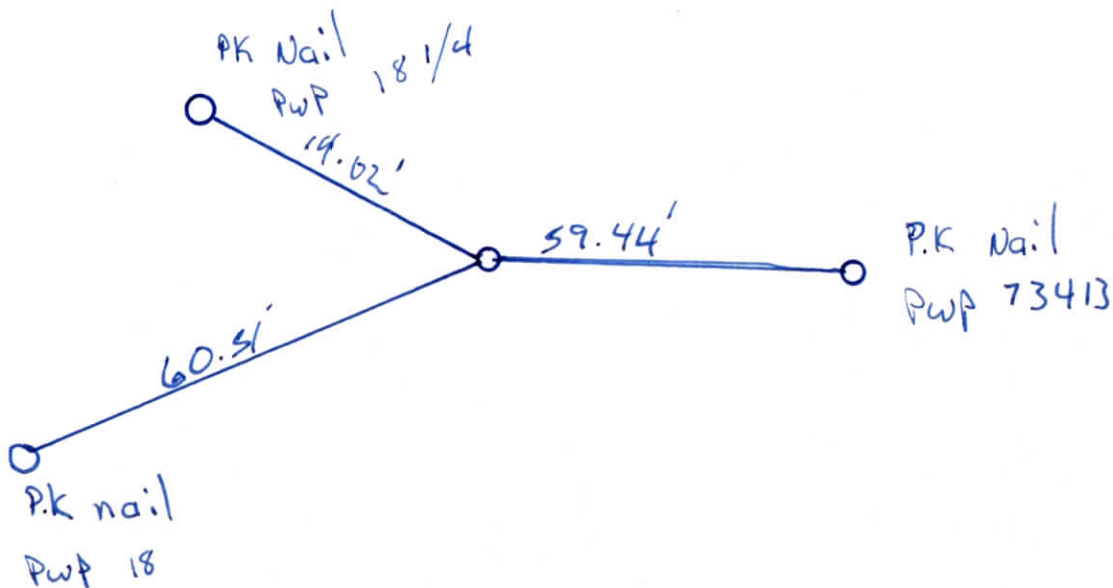
WARRICK COUNTY SURVEYOR

MICHAEL IRVIN

INDICATE CORNER REFERENCED



DESCRIBE CORNER REFERENCED



STATE PLANE COORDINATE DATA

INDIANA ZONE: WEST

X _____

Y _____

ESTABLISHED BY:

APPROVED BY

DATE

REFERENCED BY:

DATE

Alvin L Paul

July 11 1984

CORNER RECORD
WARRICK COUNTY



DESCRIPTION :

SW CORNER NW/4 NW/4

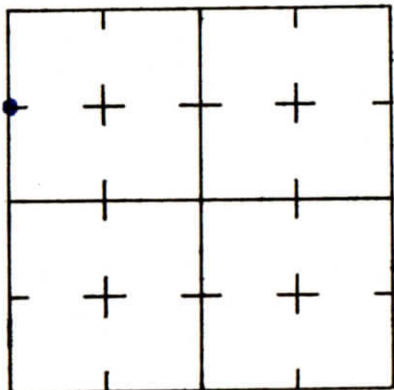
SECTION 27, T. 6 S. R. 9 W.

2nd PRINCIPLE MERIDIAN

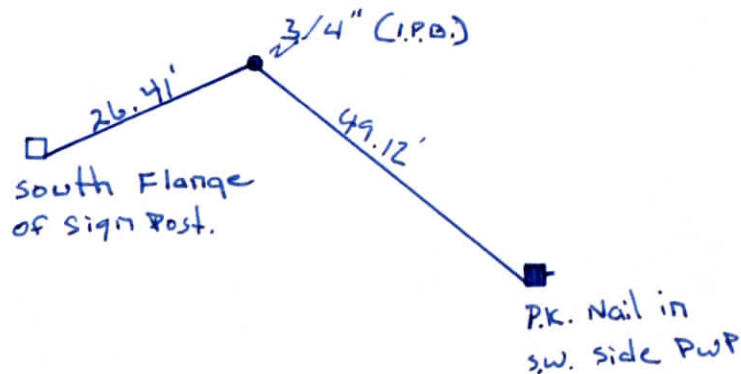
WARRICK COUNTY SURVEYOR
MICHAEL IRVIN

Hill side Terrace

INDICATE CORNER REFERENCED



DESCRIBE CORNER REFERENCED



STATE PLANE COORDINATE DATA

INDIANA ZONE: WEST

X _____

Y _____

ESTABLISHED BY:

APPROVED BY

DATE

REFERENCED BY:

DATE

JERRY V. SCHMITS

July 11, 1984

CORNER RECORD
WARRICK COUNTY

DESCRIPTION :

NW CORNER 1/2 NE 1/4

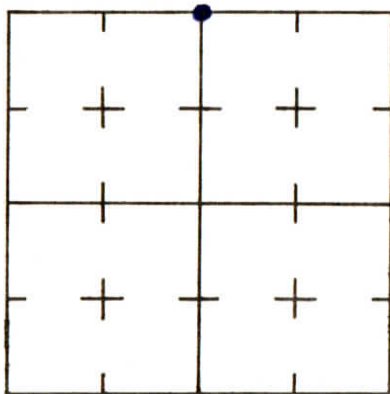
SECTION 27, T. 6 S. R. 9 W.

2nd PRINCIPLE MERIDIAN

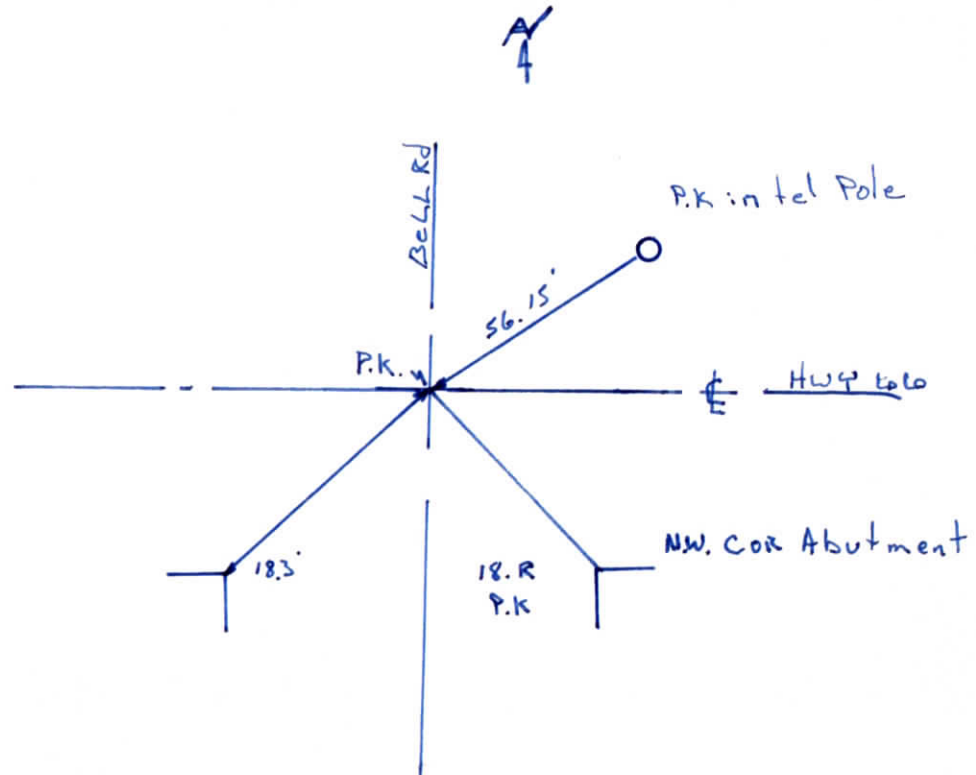
WARRICK COUNTY SURVEYOR
MICHAEL IRVIN



INDICATE CORNER REFERENCED



DESCRIBE CORNER REFERENCED



STATE PLANE COORDINATE DATA

INDIANA ZONE: WEST

X _____

Y _____

ESTABLISHED BY:

APPROVED BY

DATE

REFERENCED BY:

DATE

Edward J Bottomley, LIS Oct 10, 1979.

**CORNER RECORD
WARRICK COUNTY**



DESCRIPTION:

NW CORNER N¹/₂ NE¹/₄

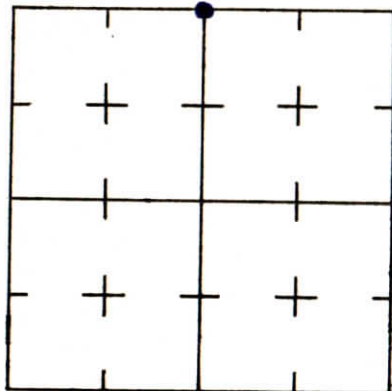
SECTION 27, T. 6 S. R. 9 W.

2nd PRINCIPLE MERIDIAN

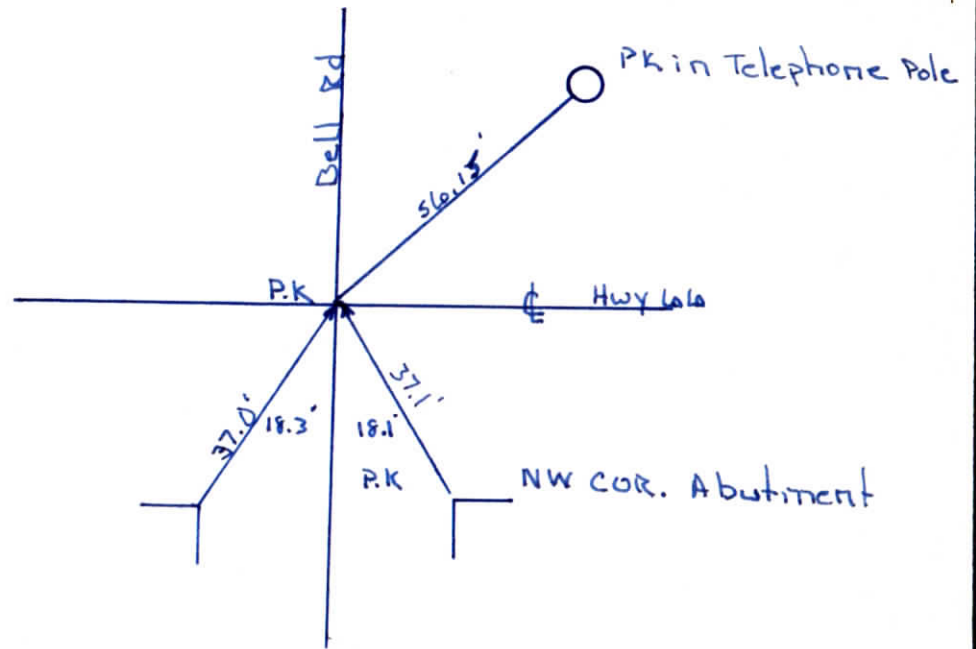
Bell Oaks Subdivision # 284

**WARRICK COUNTY SURVEYOR
MICHAEL IRVIN**

INDICATE CORNER REFERENCED



DESCRIBE CORNER REFERENCED



STATE PLANE COORDINATE DATA

INDIANA ZONE: WEST

X _____

Y _____

ESTABLISHED BY:

APPROVED BY

DATE

REFERENCED BY:

DATE

Edward J Bottomley, L.S. Oct 10, 1979

CORNER RECORD
WARRICK COUNTY



DESCRIPTION :

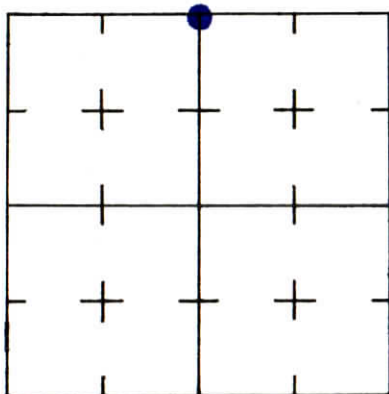
NW CORNER N¹/₂ NE¹/₄

SECTION 27, T. 6 S. R. 9 W.

2nd PRINCIPLE MERIDIAN

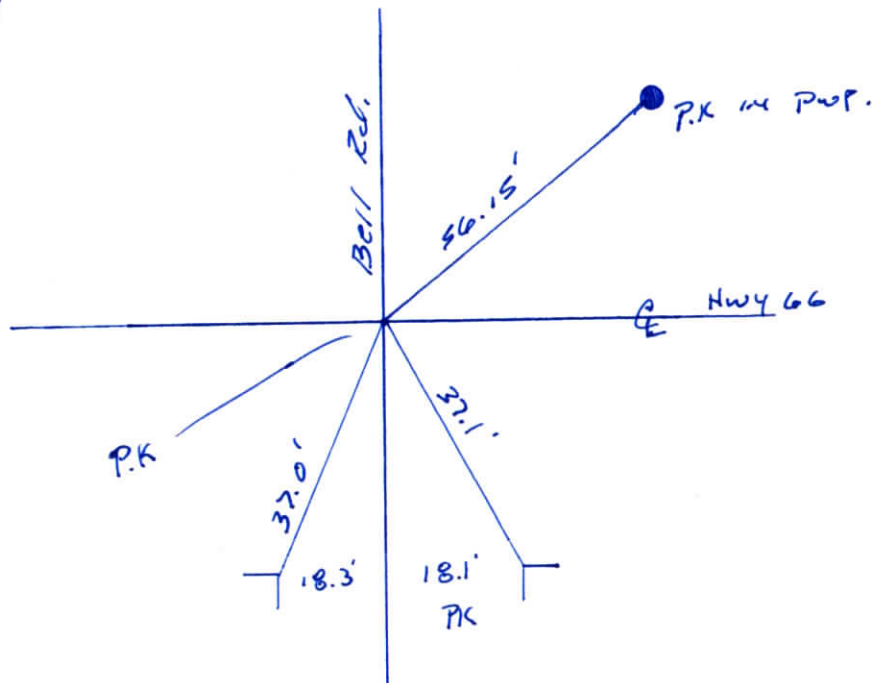
WARRICK COUNTY SURVEYOR
KARAN HARGRAVE-BARNHILL

INDICATE CORNER REFERENCED



DESCRIBE CORNER REFERENCED

Bell oaks.



STATE PLANE COORDINATE DATA

INDIANA ZONE: WEST

X _____

Y _____

ESTABLISHED BY:

APPROVED BY

DATE

REFERENCED BY:

DATE

Bottomley

Oct 79

CORNER RECORD
WARRICK COUNTY



DESCRIPTION :

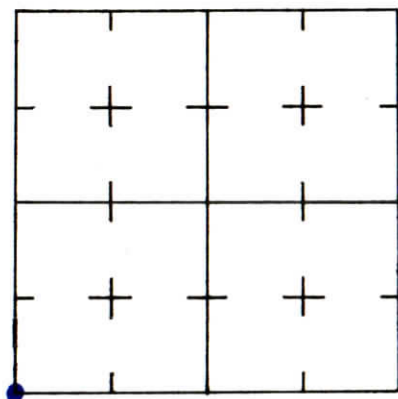
SW CORNER Sw¹/₄ Sw¹/₄

SECTION 27, T. 6 S. R. 9 W.

2nd PRINCIPLE MERIDIAN

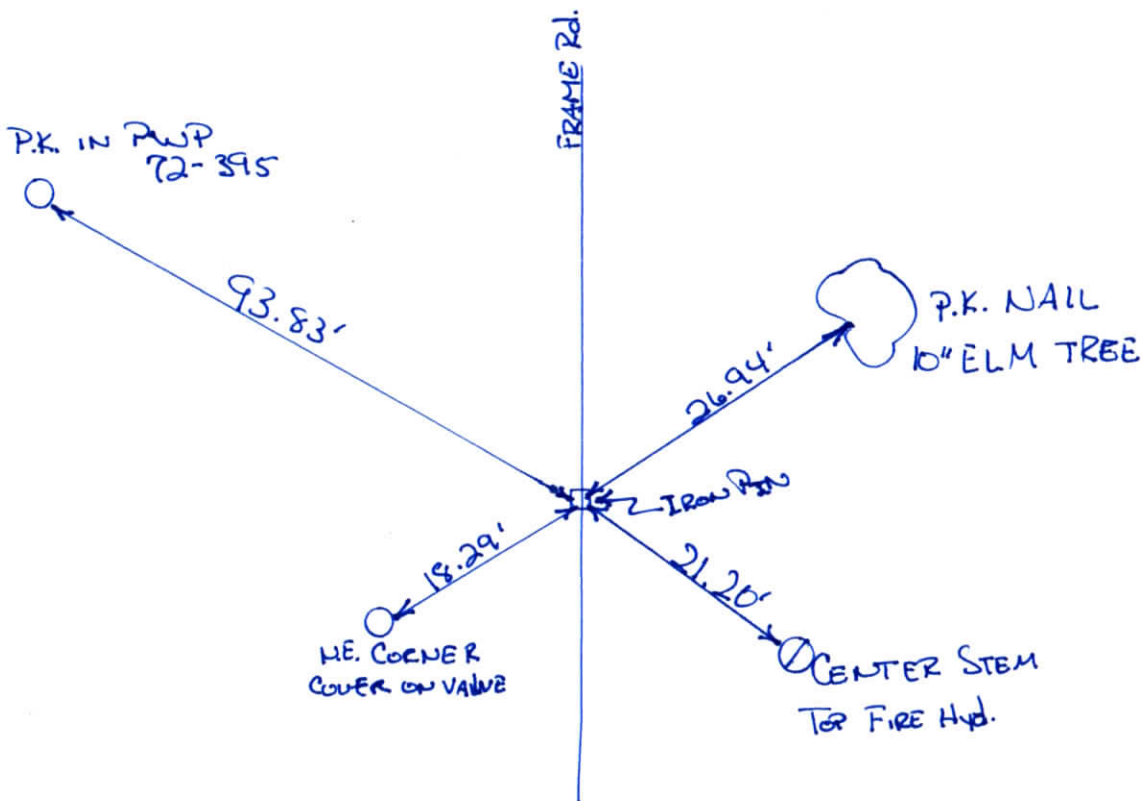
WARRICK COUNTY SURVEYOR
KARAN HARGRAVE-BARNHILL

INDICATE CORNER REFERENCED



DESCRIBE CORNER REFERENCED

FRAMEWOOD ESTATES
NO. 2



STATE PLANE COORDINATE DATA

INDIANA ZONE: WEST

X _____

Y _____

ESTABLISHED BY:

APPROVED BY

DATE

REFERENCED BY:

DATE

EDWARD J. BOTTOMLEY

3-1-78

CORNER RECORD
WARRICK COUNTY

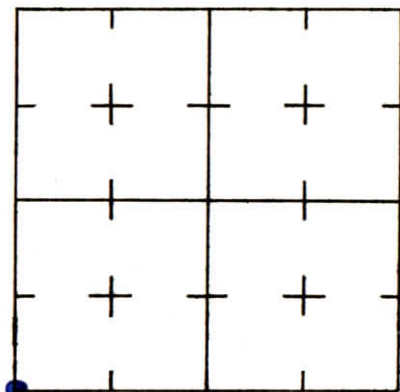
DESCRIPTION :

SW CORNER SW¹/₄ SW¹/₄
SECTION 27, T. 6 S. R. 9 W.
2nd PRINCIPLE MERIDIAN
FRAMWOOD Estates #269

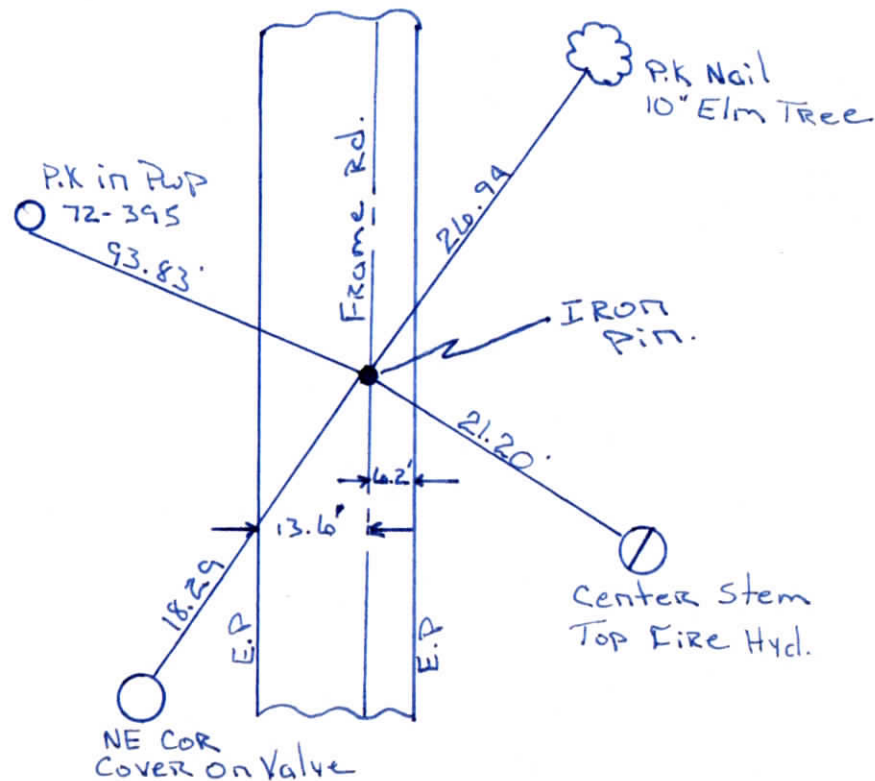
WARRICK COUNTY SURVEYOR
MICHAEL IRVIN



INDICATE CORNER REFERENCED



DESCRIBE CORNER REFERENCED



STATE PLANE COORDINATE DATA

INDIANA ZONE: WEST

X _____

Y _____

ESTABLISHED BY:

APPROVED BY

DATE

REFERENCED BY:

DATE

Elmo D Dockery

Sept. 14, 1977.

CORNER RECORD
WARRICK COUNTY

DESCRIPTION :

NW CORNER SE¹/₄ _____

SECTION 27, T. 6 S. R. 9 W.

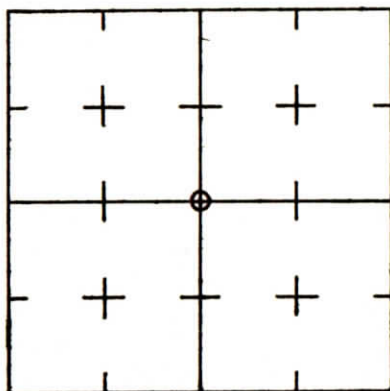
2nd PRINCIPLE MERIDIAN

WARRICK COUNTY SURVEYOR

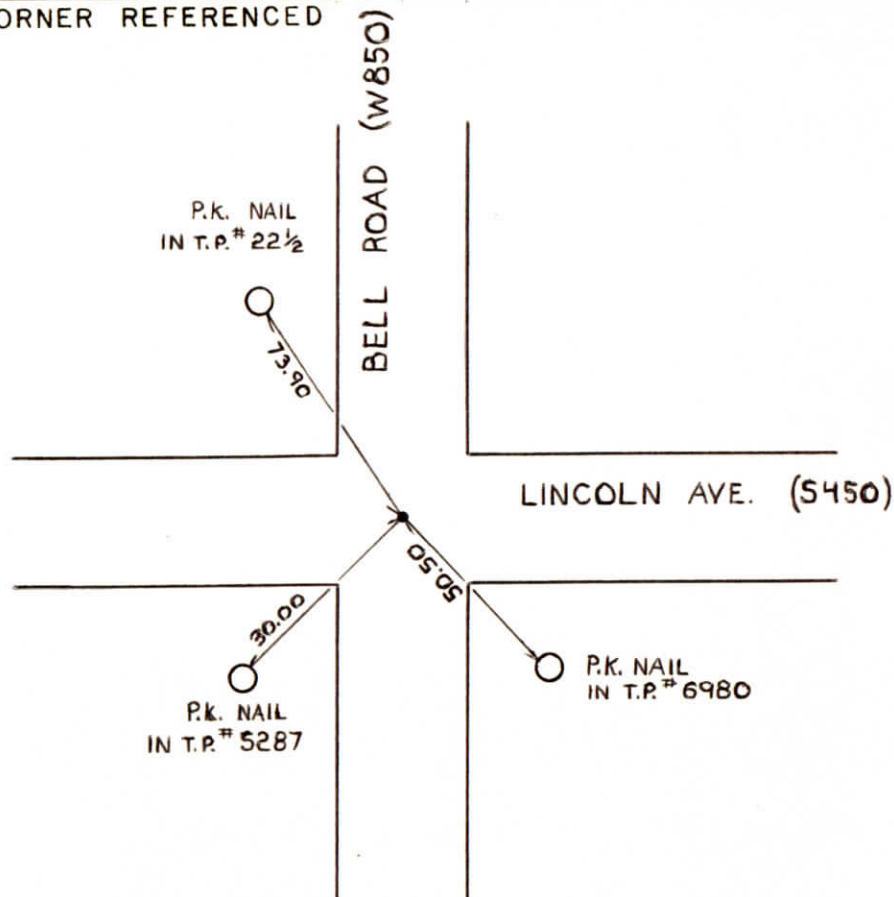
MICHAEL IRVIN



INDICATE CORNER REFERENCED



DESCRIBE CORNER REFERENCED



STATE PLANE COORDINATE DATA

INDIANA ZONE: WEST

X _____

Y _____

ESTABLISHED BY:

APPROVED BY *NOT VERIFIED*

DATE
4-17-73

REFERENCED BY:

DATE

NW CORNER SE $\frac{1}{4}$ SEC 27-6-9

~~PPPP10~~

TYPE OF MONUMENT - I.P.

DATE - 4-17-73

REFERENCED BY - SWC

7-2-79
JST
✓

CORNER RECORD
WARRICK COUNTY



DESCRIPTION:

SW CORNER NW¹/₄

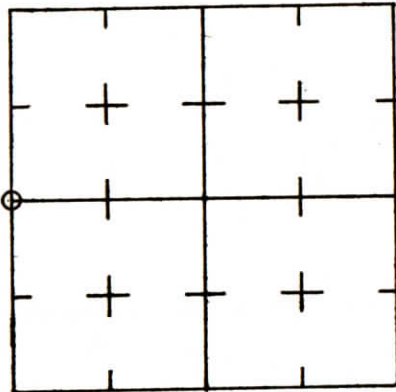
SECTION 27, T. 6 S.

R. 9 W.

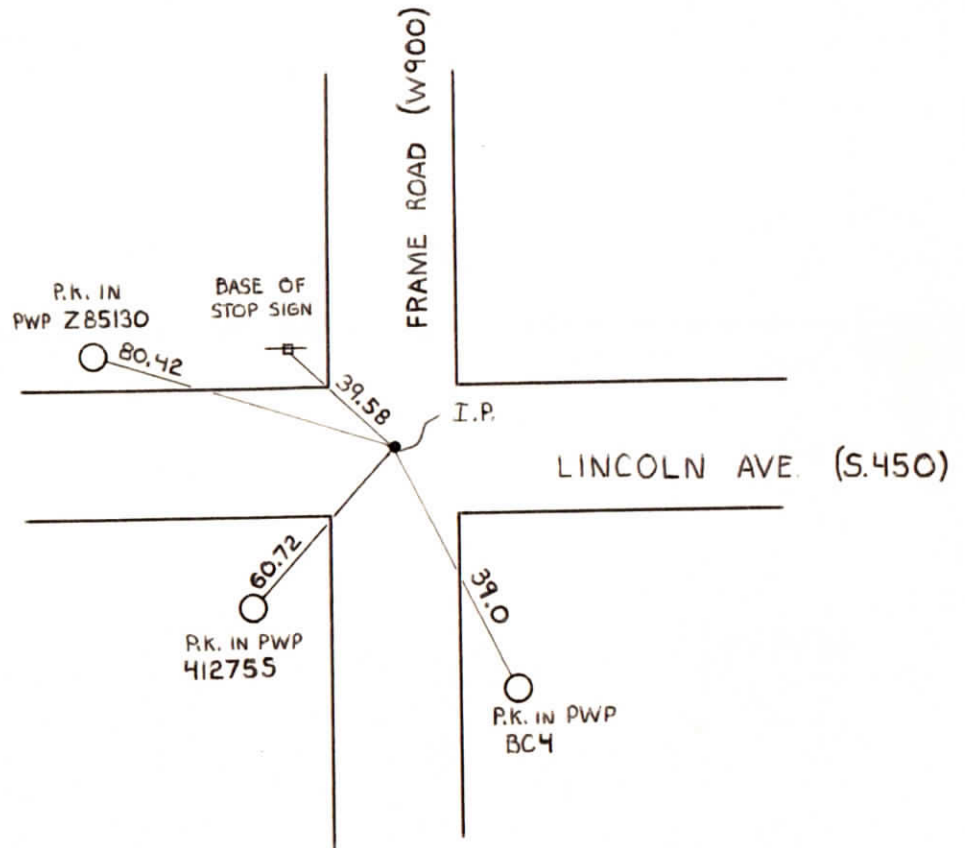
2nd PRINCIPLE MERIDIAN

WARRICK COUNTY SURVEYOR
MICHAEL IRVIN

INDICATE CORNER REFERENCED



DESCRIBE CORNER REFERENCED



STATE PLANE COORDINATE DATA

INDIANA ZONE: WEST

X _____

Y _____

ESTABLISHED BY:

APPROVED BY *NOT VERIFIED*

DATE
6-18-73

REFERENCED BY:

DATE

~~000027~~
(SW cor NW $\frac{1}{4}$) sec 27-T65-R9W
SE cor NE $\frac{1}{4}$ sec 28-T65-R9W

Type of Monument: I.P. (existing)

Date referenced: 6/18/73

referenced by: SWC

Entered
7-12-79
gch

CORNER RECORD
WARRICK COUNTY



DESCRIPTION :

SW CORNER SE 1/4 SE 1/4

SECTION 27, T. 6 S. R. 9 W.

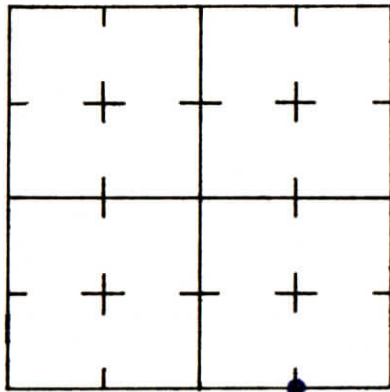
2nd PRINCIPLE MERIDIAN

Meadowood HPT

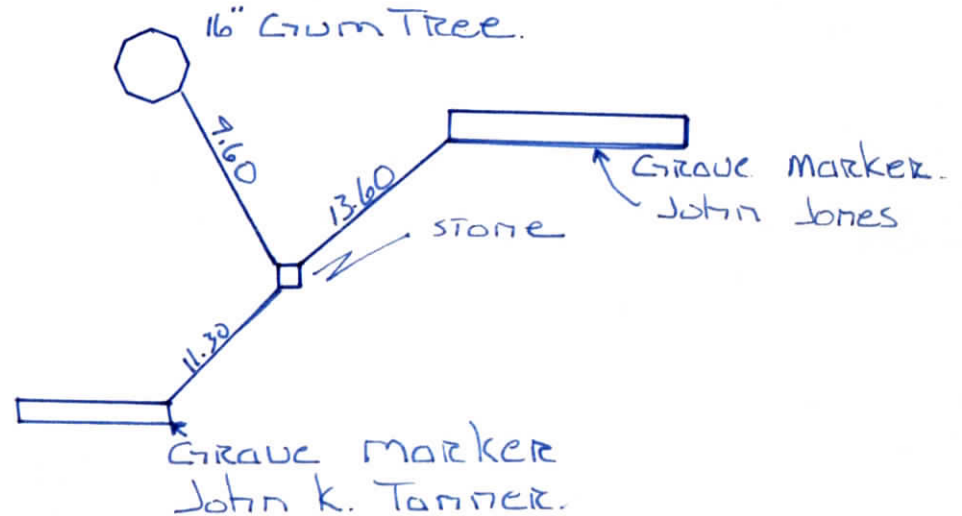
WARRICK COUNTY SURVEYOR

MICHAEL IRVIN

INDICATE CORNER REFERENCED



DESCRIBE CORNER REFERENCED



STATE PLANE COORDINATE DATA

INDIANA ZONE: WEST

X _____

Y _____

ESTABLISHED BY:

APPROVED BY

DATE

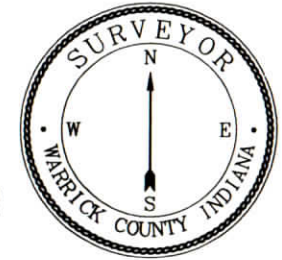
REFERENCED BY:

DATE

Elmo D Dockery

Oct 13, 1982

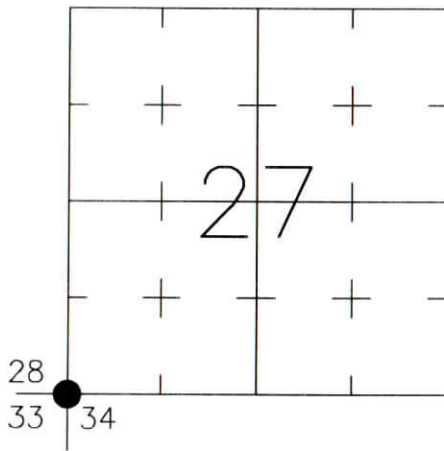
CORNER RECORD WARRICK COUNTY



DESCRIPTION:
SOUTHWEST CORNER _____
SECTION 27, T. 6 S., R. 9 W.
2nd PRINCIPLE MERIDIAN

WARRICK COUNTY SURVEYOR
KARAN HARGRAVE-BARNHILL

INDICATE CORNER REFERENCED:



MONUMENT TYPE: RAILROAD SPIKE
SIZE:
DEPTH/HEIGHT: 10" BELOW PVMT. GRADE
REFERENCE TIE DRAWING:

FOR NOTES ON CORNER HISTORY SEE REVERSE.

STATE PLANE COORDINATE DATA:
INDIANA WEST ZONE, NAD 83 (1997)
U.S. SURVEY FEET

X _____

Y _____

COORDINATES ESTABLISHED BY:

APPROVED BY:

DATE:

MAG Nail
S. Side PWP #172-396
Up 50"

PK Nail
S. Side PWP
Up 19"

Willow Pond Road
(Asph.)

MAG Nail
N. Side PWP #72-397
Up 4"

Center of Cor.
Post (4' C.L.F.)
Up 12"

MAG Nail
S.E. Side PWP #12
Up 4"

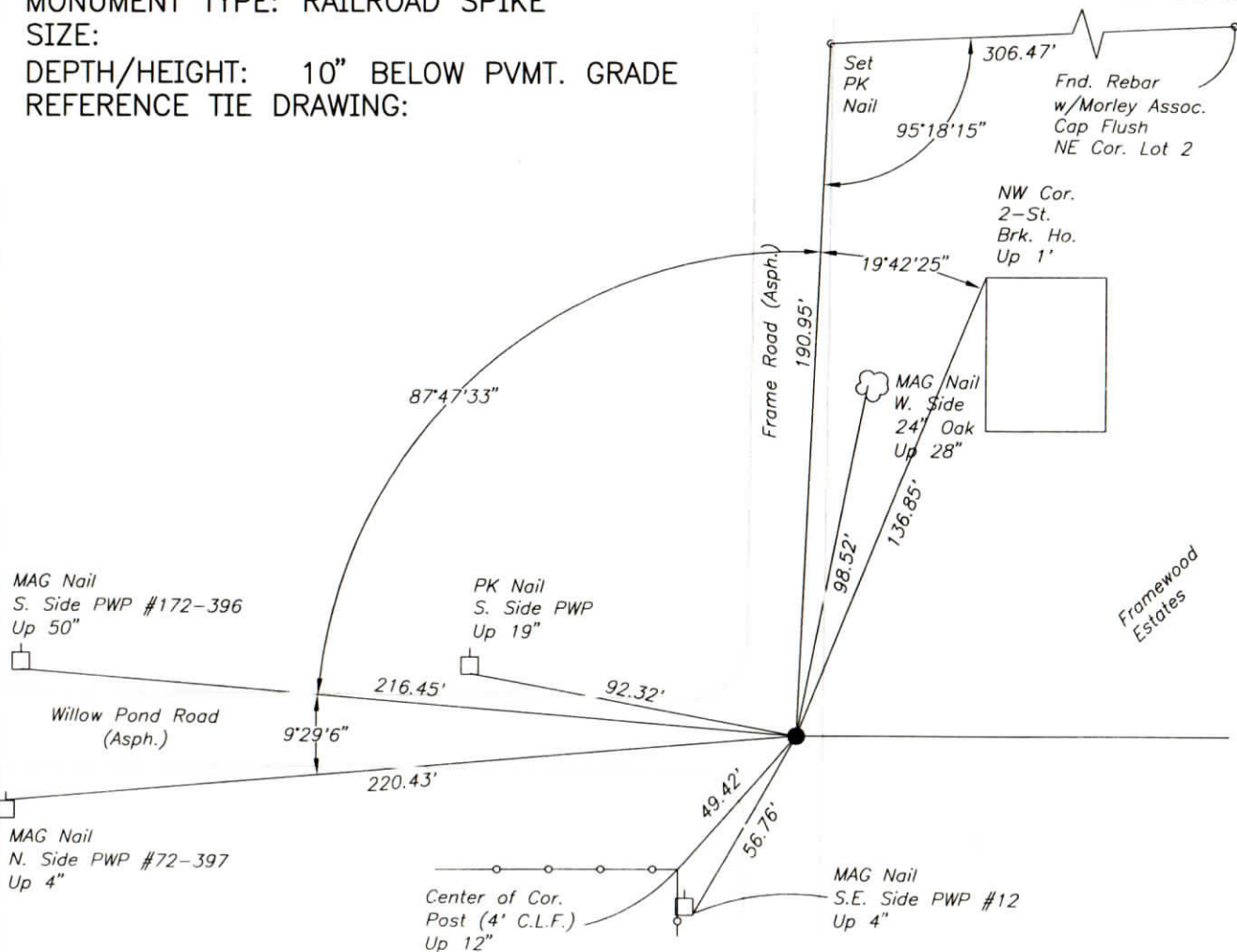
REFERENCED BY: D.DREES/R.HARLAN

DATE: 9/25/02

APPROVED BY: P.JONES, RLS#9600016

DATE: 9/27/02

CORNER FILE CODE:
T6S-R9W-V-13



CORNER HISTORY:

CORNER FILE CODE:
T6S-R9W-V-13

ORIGINAL USPLS SURVEY: Corner established by Jacob Fowler, Dec. 18, 1805 "Post".

COUNTY SURVEYOR'S BOOKS: Book 1 P. 56: W.B. Wright WCS Nov. 1, 1855 "Stone".

Book 3 P. 141: Louis Meyer WCS Nov. 10, 1909 "Sand Stone set".

OTHER SURVEYS AND PLATS: "Corner Record" card shows a 1977 reference to an iron pin, as taken from the plat of Framewood Estates.

A RR spike 4" below grade was tied in and referenced on the Bell Road Route Survey (Bernardin-Lochmueller & Assoc. 1989, unrecorded) and on the Lincoln Ave. Route Survey (Bernardin-Lochmueller & Assoc. 1990, unrecorded), consistent with Corner Record Card reference ties.

A plat of survey by Steven A. Sherwood (Doc. 2001-008743) shows a found PK nail flush.

VERIFICATION OF CORNER POSITION: August, 2002: A PK nail was found (and removed) over a railroad spike 10" below pavement grade. Dimensions measured from the spike shown to several lot corner monuments in Framewood Estates (not shown) were reasonably consistent with plat dimensions.

Perry E. Jones 9/27/02

CORNER RECORD
WARRICK COUNTY

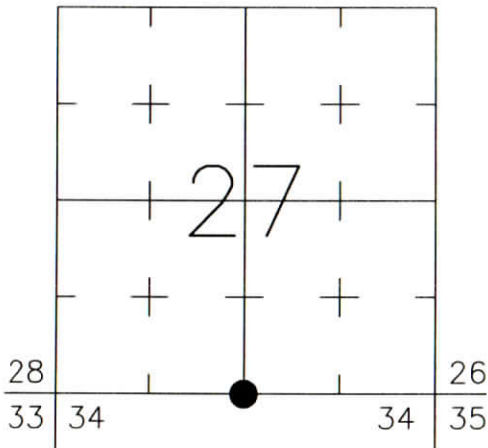


DESCRIPTION:
SOUTHWEST CORNER SOUTHEAST QUARTER
SECTION 27, T. 6 S., R. 9 W.
2nd PRINCIPLE MERIDIAN

WARRICK COUNTY SURVEYOR
KARAN HARGRAVE-BARNHILL

FOR NOTES ON CORNER HISTORY SEE REVERSE.

INDICATE CORNER REFERENCED:



MONUMENT TYPE: IRON ROD IN CONC.
SIZE: 3/4" DIA.
DEPTH/HEIGHT: FLUSH
REFERENCE TIE DRAWING:

STATE PLANE COORDINATE DATA:
INDIANA WEST ZONE, NAD 83 (1997)
U.S. SURVEY FEET

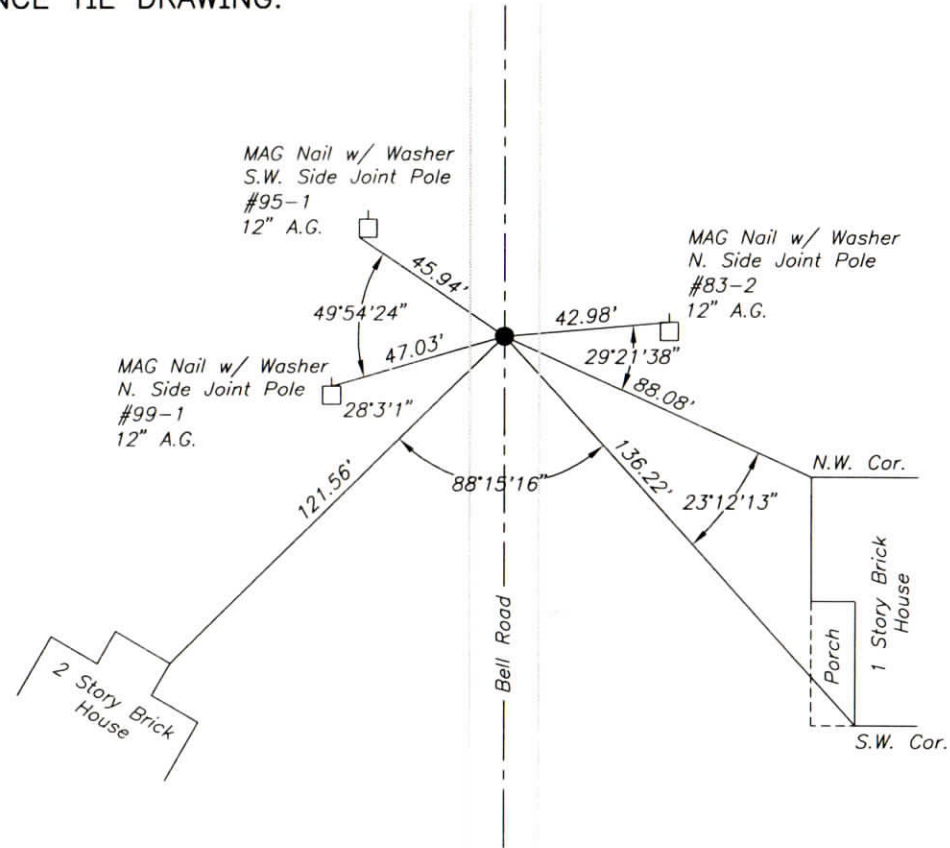
X ----

Y ----

COORDINATES ESTABLISHED BY:

APPROVED BY:

DATE:



REFERENCED BY: K.KLEIN/M.BURRESS

DATE: 8/27/02

APPROVED BY: P.JONES, RLS#9600016

DATE: 9/12/02

CORNER FILE CODE:
T6S-R9W-V-15

CORNER HISTORY:

CORNER FILE CODE:
T6S-R9W-V-15

ORIGINAL USPLS SURVEY: Corner established by Jacob Fowler, Dec. 18, 1805 "Post".

COUNTY SURVEYOR'S BOOKS: Book 1 P. 56: W.B. Wright WCS Nov. 1, 1855 "Stone".

OTHER SURVEYS AND PLATS: "Corner Code System" card shows an undated reference to a 3/4" IP.

The 1976 plat of York Ridge Sec. A ties to the corner (mon. not identified).

A found 3/4" rebar was tied in and referenced on the Bell Road Route Survey (Bernardin-Lochmueller & Assoc. 1989, unrecorded). This corner was later re-monumented during the reconstruction of Bell Road.

VERIFICATION OF CORNER POSITION: August, 2002: The 3/4" iron rod in concrete placed during the Bell Road reconstruction project was found in place.

Perry E. Jones 9/12/02

CORNER RECORD
WARRICK COUNTY



DESCRIPTION:

NW CORNER SW 1/4 SE 1/4

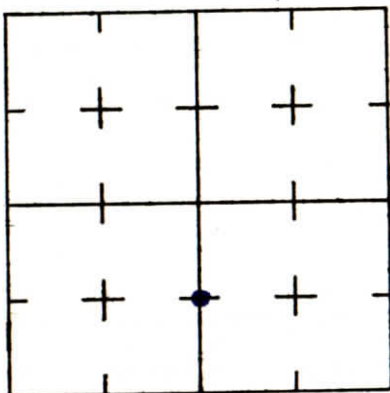
SECTION 27, T. 6 S. R. 9 W.

2nd PRINCIPLE MERIDIAN

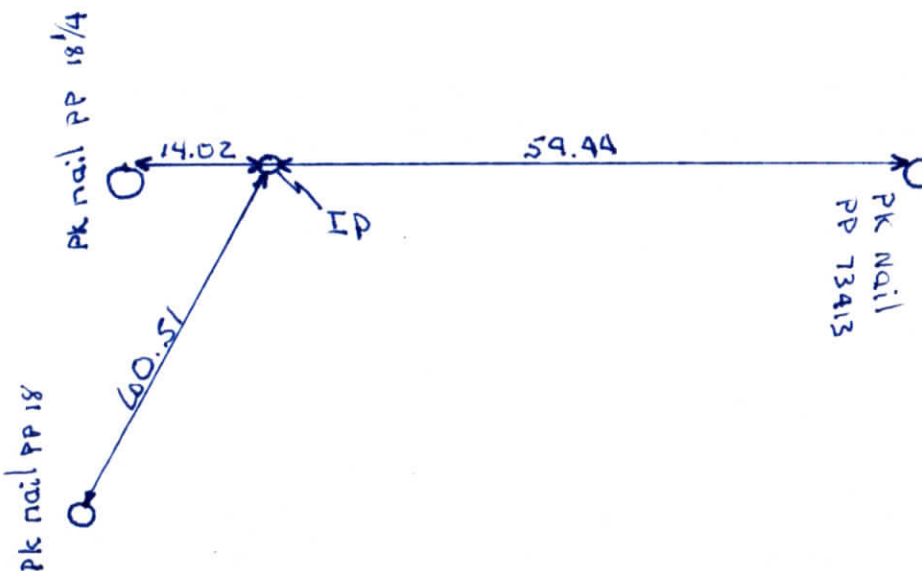
York Ridge Section 'A'

WARRICK COUNTY SURVEYOR
MICHAEL IRVIN

INDICATE CORNER REFERENCED



DESCRIBE CORNER REFERENCED



STATE PLANE COORDINATE DATA

INDIANA ZONE: WEST

X _____

Y _____

ESTABLISHED BY:

APPROVED BY

DATE

REFERENCED BY:

DATE

Elmo D Dockery

Nov, 10, 1976

**CORNER RECORD
WARRICK COUNTY**

DESCRIPTION :

NW CORNER SW¹/₄ SE¹/₄

SECTION 27, T. 6 S. R. 9 W.

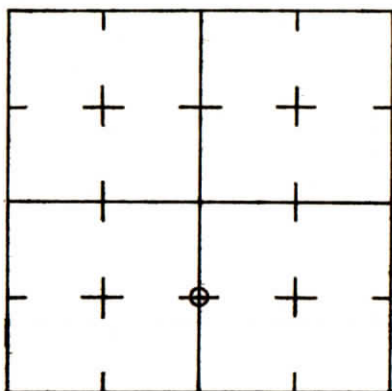
2nd PRINCIPLE MERIDIAN

WARRICK COUNTY SURVEYOR

MICHAEL IRVIN



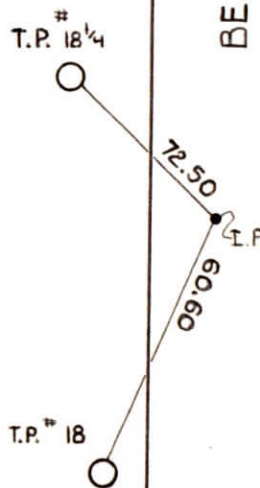
INDICATE CORNER REFERENCED



DESCRIBE CORNER REFERENCED

LOCUST LANE

BELL ROAD (W850)



STATE PLANE COORDINATE DATA

INDIANA ZONE: WEST

X _____

Y _____

ESTABLISHED BY:

APPROVED BY

NOT VERIFIED

DATE
4-17-73

REFERENCED BY:

DATE

000011

NW CORNER ~~S~~ $\frac{1}{4}$ SE $\frac{1}{4}$ 27-6-9

TYPE OF MONUMENT - I.P.

DATE - 4-17-73

REFERENCED BY - SWC



RECORD OF SECTION CORNERS
Warrick County

Section 27 Township 6 South Range 9 West 2nd Principle Meridian

Date	Cor	Location	Description of		Distance from Corner	Bearing from Corner (North Assumed)	Cond	Check By	Remarks
			Monument	Reference					
	A								
	B								
	C								
6-18-73	D	SW cor. NW $\frac{1}{4}$	1" iron pipe	1) Post 2) PK nail 3) PK nail 4) PK nail	59.4' 39.03' 60.72' 80.51'	N 76° E S 64° E S 72° W N 80° W	good	GAT	Found in place Post of STOP sign In FWP # 66546 In tele pole # 41275S In FWP # 285130
	E								
	F								
	G								
	H								
4-17-73	I	Center of Sec.	1" iron pipe	1) I beam 2) PK nail 3) PK nail 4) PK nail	34.58' 50.58' 30.04' 73.94'	N 22° E S 38° E S 48° W N 21° W	good	GAT	Found in place N end guard rail In FWP # 69-80 In FWP # 25287 In FWP # BC 22 1/2

J. BIGGERSTAFF
12/2/77

CORNER RECORD
WARRICK COUNTY

DESCRIPTION:

NE CORNER NE 1/4 NE 1/4

SECTION 27, T. 6 S. R. 9 W.

2nd PRINCIPLE MERIDIAN

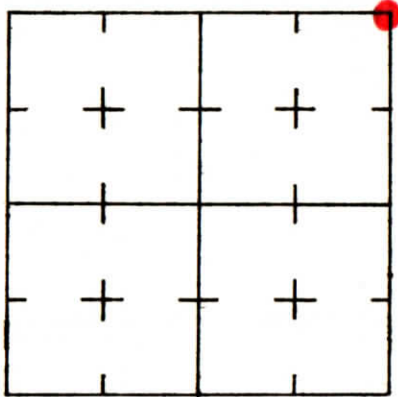
High Point Centre See C# 83

WARRICK COUNTY SURVEYOR

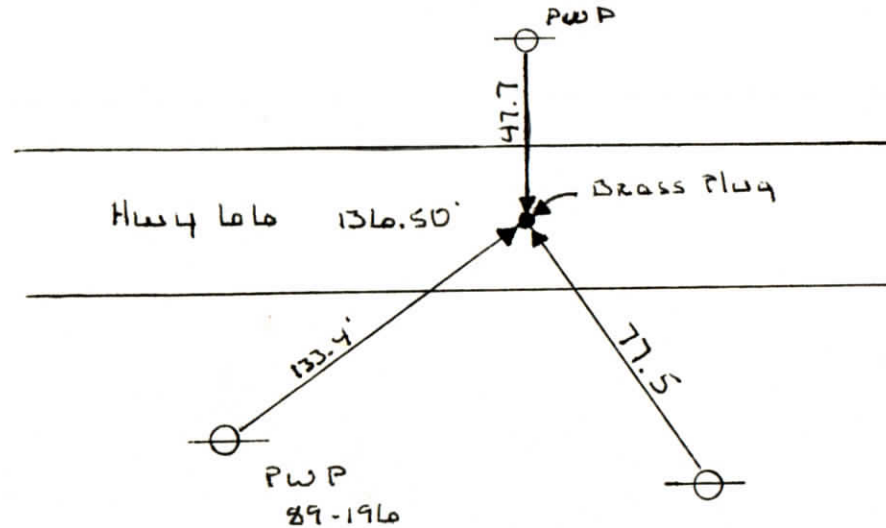
MICHAEL IRVIN



INDICATE CORNER REFERENCED



DESCRIBE CORNER REFERENCED



STATE PLANE COORDINATE DATA

INDIANA ZONE: WEST

X _____

Y _____

ESTABLISHED BY:

REFERENCE
NE COR.
NE 1/4 NE 1/4
SEC 27-6-9

APPROVED BY

DATE

REFERENCED BY:

DATE