

CORNER RECORD
WARRICK COUNTY



DESCRIPTION:

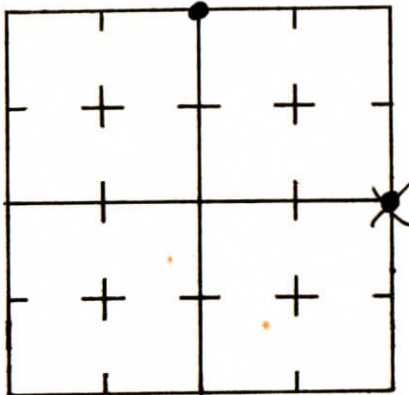
~~NW~~ CORNER NE 1/4

SECTION 21, T. 6 S. R. 9 W.

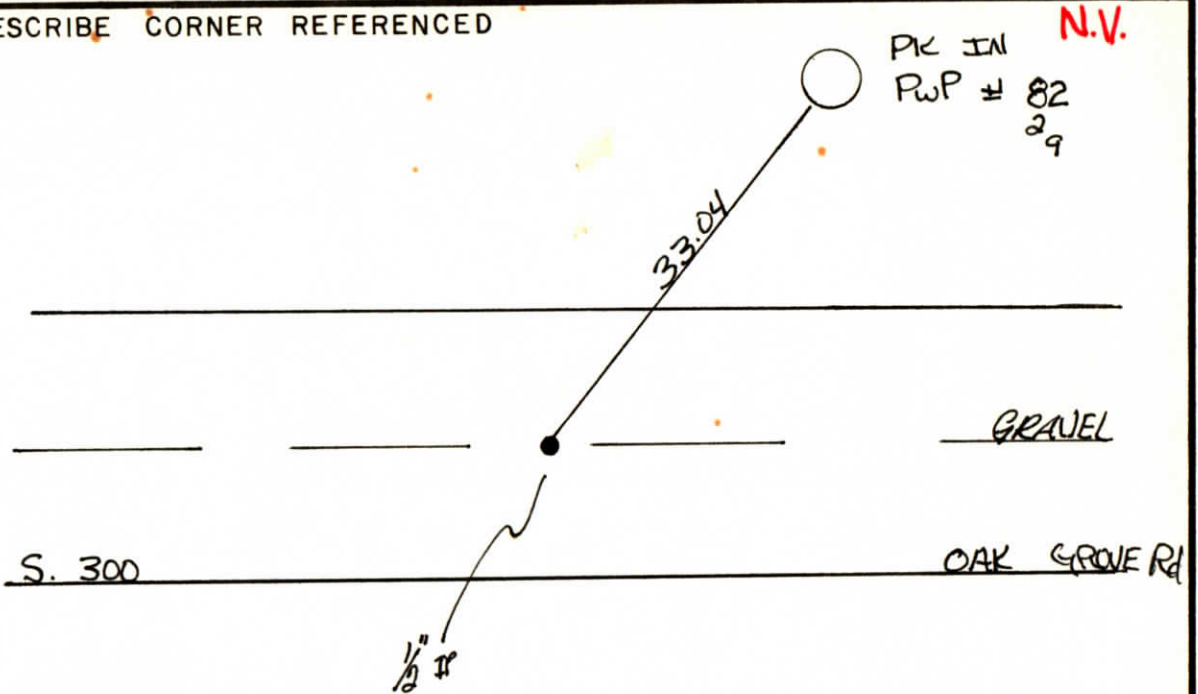
2nd PRINCIPAL MERIDIAN

WARRICK COUNTY SURVEYOR
MICHAEL F. FELDBUSCH, L.S.

INDICATE CORNER REFERENCED



DESCRIBE CORNER REFERENCED



STATE PLANE COORDINATE DATA

INDIANA ZONE: WEST

X _____

Y _____

ESTABLISHED BY:

APPROVED BY

DATE

REFERENCED BY:

DATE

Ray Beck

6-2-83

**CORNER RECORD
WARRICK COUNTY**

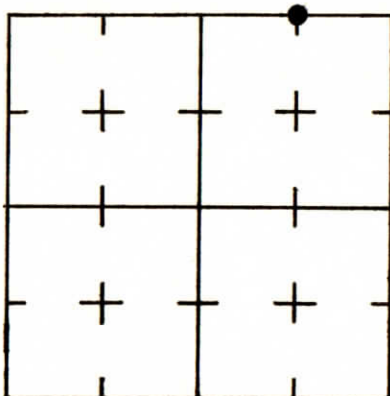
DESCRIPTION:

NW CORNER NE 1/4 NE 1/4
SECTION 21, T. 6 S. R. 9 W.
2nd PRINCIPAL MERIDIAN

**WARRICK COUNTY SURVEYOR
MICHAEL F. FELDBUSCH, L.S.**

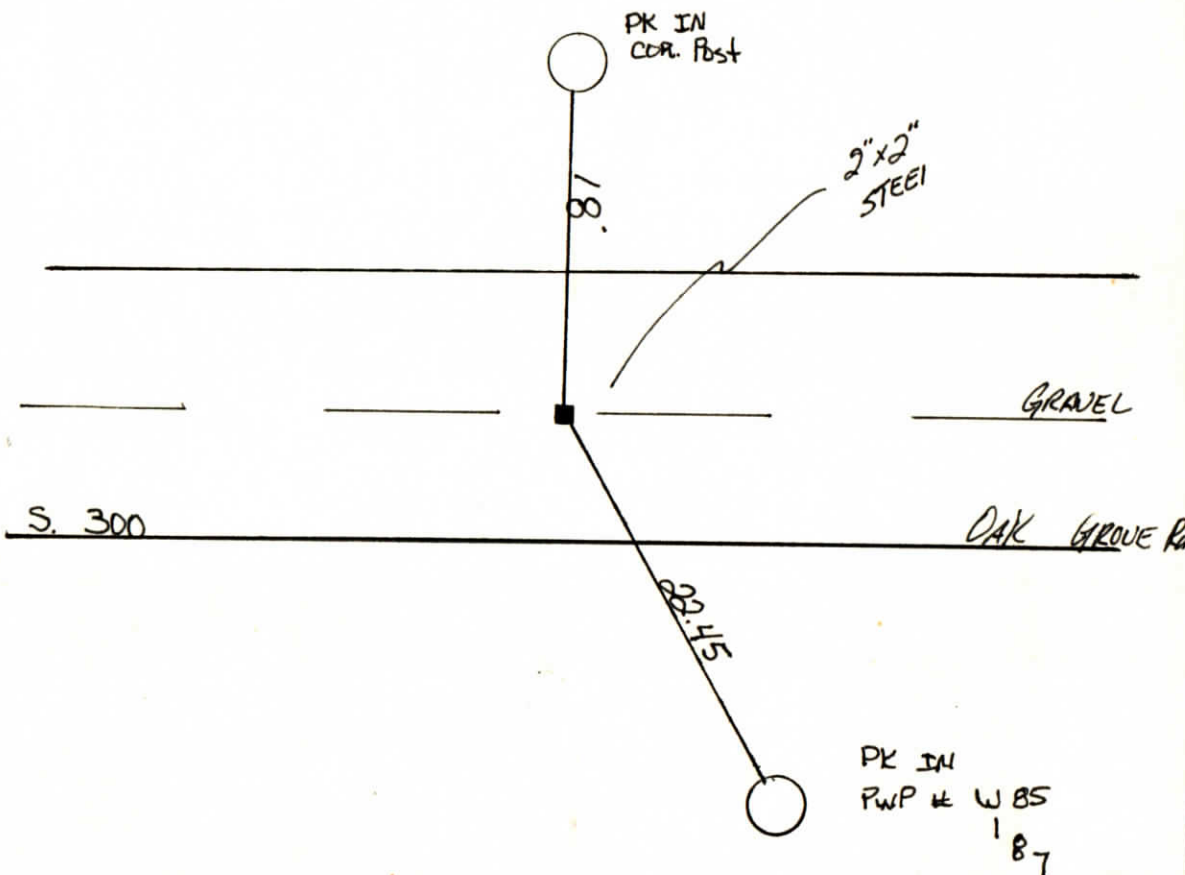


INDICATE CORNER REFERENCED



DESCRIBE CORNER REFERENCED

NV.



STATE PLANE COORDINATE DATA

INDIANA ZONE: WEST

X _____

Y _____

ESTABLISHED BY:

APPROVED BY

DATE

REFERENCED BY:

DATE

Ray Beck 6-2-83

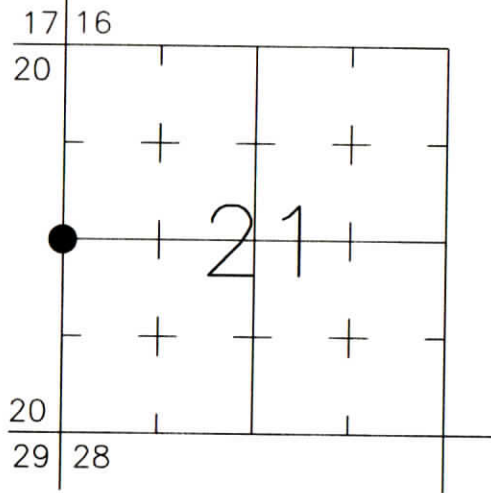
CORNER RECORD
WARRICK COUNTY



DESCRIPTION:
SOUTHWEST CORNER NORTHWEST QUARTER
SECTION 21, T. 6 S., R. 9 W.
2nd PRINCIPLE MERIDIAN

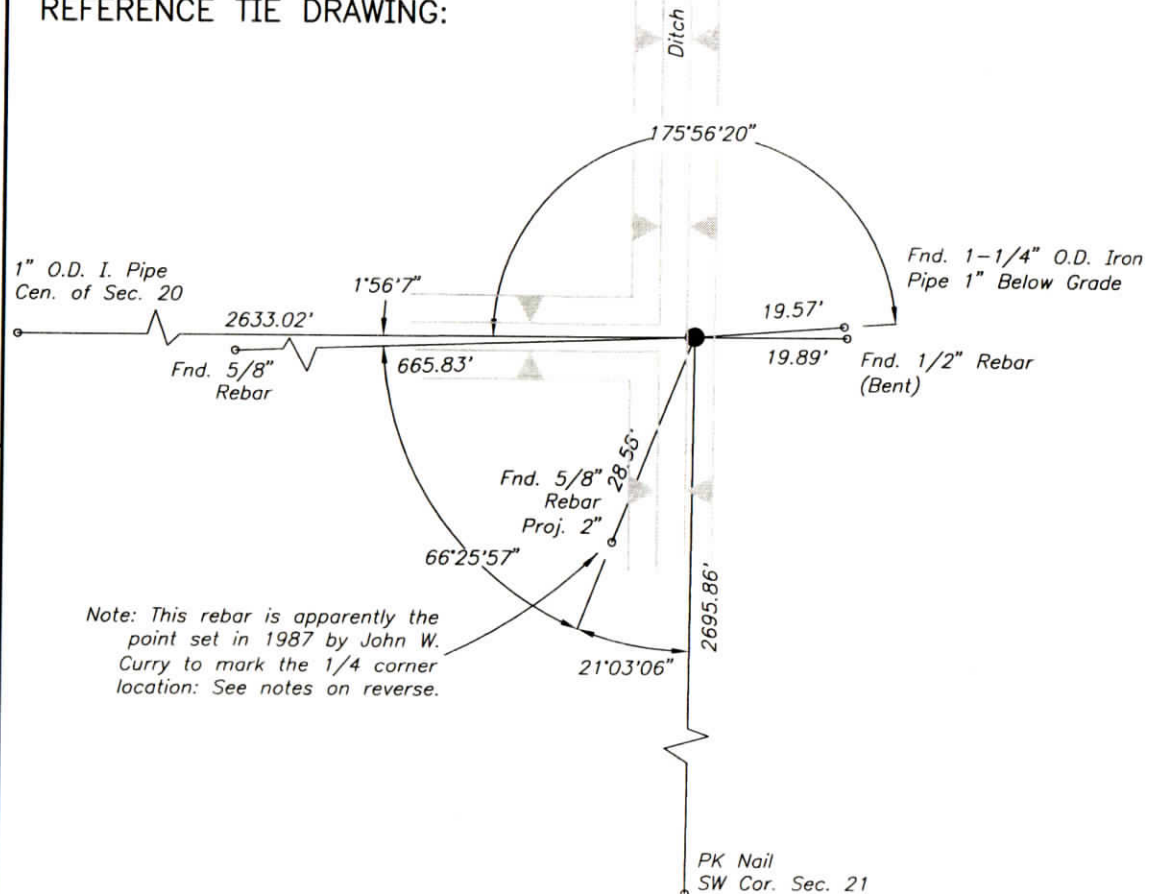
WARRICK COUNTY SURVEYOR
KARAN HARGRAVE-BARNHILL

INDICATE CORNER REFERENCED:



MONUMENT TYPE: IRON PIPE W/CAP "LS8800355"
SIZE: 1" O.D.
DEPTH/HEIGHT: FLUSH
REFERENCE TIE DRAWING:

FOR NOTES ON CORNER HISTORY SEE REVERSE.



Note: This rebar is apparently the point set in 1987 by John W. Curry to mark the 1/4 corner location: See notes on reverse.

STATE PLANE COORDINATE DATA:
INDIANA WEST ZONE, NAD 83 (1997)
U.S. SURVEY FEET

X _____
Y _____

COORDINATES ESTABLISHED BY:

APPROVED BY:

DATE:

REFERENCED BY: R.HAHN/J.CRANE

APPROVED BY: P.JONES, RLS#9600016

DATE: 3/10/03

DATE: 3/17/03

CORNER FILE CODE:
T6S-R9W-P-09

CORNER HISTORY:

CORNER FILE CODE:
T6S-R9W-P-09

ORIGINAL USPLS SURVEY: Corner established by Jacob Fowler, Dec. 20, 1805 "Post".

COUNTY SURVEYOR'S BOOKS: Book 1 P. 252: shows chainage along the west line of the Section 21 (east line of 20) (39.74 ch. to NW cor. of Sec. 21, 40.72 ch. to SW cor. of Sec. 21). No monuments identified.

Book 3 P. 303: M.Klippel, Surveyor, Feb. 24, 1938 "Stone in place"

OTHER SURVEYS AND PLATS: Plat of survey by Elmo D. Dockery dated 3/7/87 (unrecorded, copy provided by Donald Adler) shows I.P. 21.69 feet east of corner, apparently re-established using old chainage (from SW cor. Section 21) taken from Co. Surv. Book 1, Page 252.

Plat of survey by John W. Curry dated 12/30/87 (unrecorded, copy provided by Donald Adler) shows "IP Set" (at midpoint of section line). Does not mention the corner re-established by Dockery survey.

Location Control Route Survey for SR 66 (Doc. 1997R-007361) tied in a 5/8" iron pin (apparently the I.P. set by Curry in 1987). The section corner ties for this survey were performed in 1990. (Neither the Dockery plat nor the Curry plat had been found at the time of the route survey.)

A plat of survey by Donald Ray Adler (Doc. 1995R-211) shows the Curry rebar found, and a pipe with cap set at the corner location previously established by Dockery, approx. 26' N and 10' E of the Curry rebar. Mr. Adler's survey report points out that the pipe set represents a retracement of the Dockery survey, not necessarily the true quarter section corner.

VERIFICATION OF CORNER POSITION: March, 2003; both the Curry rebar and the Adler pipe (marking the corner re-established by Dockery) were found in place. The Adler pipe was chosen as marking the apparent corner (over the Curry rebar) for the following reasons:

- The Dockery survey attempted to use old survey records to restore the corner to its previous position (although it is unclear from the Dockery plat whether the method was thoroughly applied.)
- The Curry survey, dated about nine months after the Dockery survey, either overlooks or ignores the Dockery survey. It uses single proportion along the section line to re-establish the corner.
- The Dockery corner is reasonably consistent with dredged ditch lines (to the north, south, and west) which are thought to have been existing prior to his survey.

Significant uncertainties exist for this corner due to the conflicting monuments, discrepancies between the survey plats and field-measured dimensions, and uncertainties in the NW and SW corners of Section 21. It is this surveyor's opinion that the available evidence most strongly favors the position marked by the Adler pipe.

Perry E. Jones 3/17/03

CORNER RECORD
WARRICK COUNTY



DESCRIPTION:

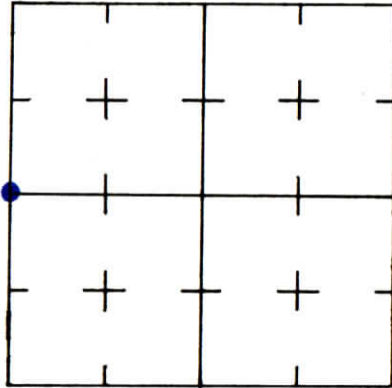
Sw CORNER NW 1/4

SECTION 21, T. 6 S. R. 9 W.

2nd PRINCIPLE MERIDIAN

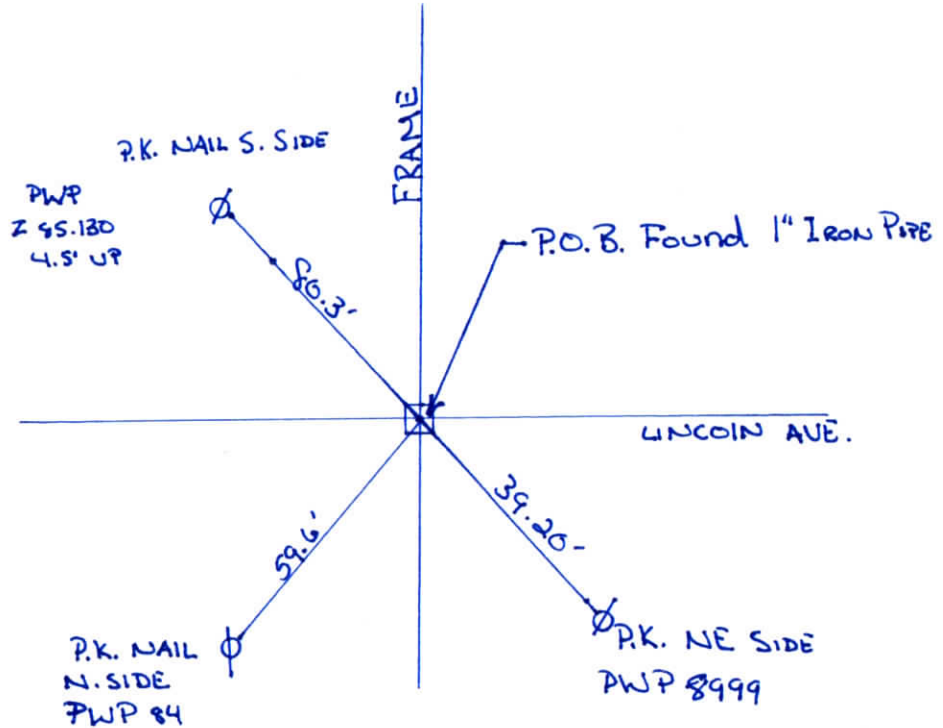
WARRICK COUNTY SURVEYOR
KARAN HARGRAVE-BARNHILL

INDICATE CORNER REFERENCED



DESCRIBE CORNER REFERENCED

Fieldstone Section "B"



STATE PLANE COORDINATE DATA

INDIANA ZONE: WEST

X _____

Y _____

ESTABLISHED BY:

APPROVED BY

DATE

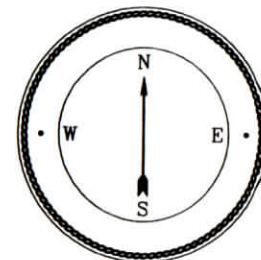
REFERENCED BY:

DATE

RALPH A. EASLEY SR.

12-15-96

CORNER RECORD WARRICK COUNTY

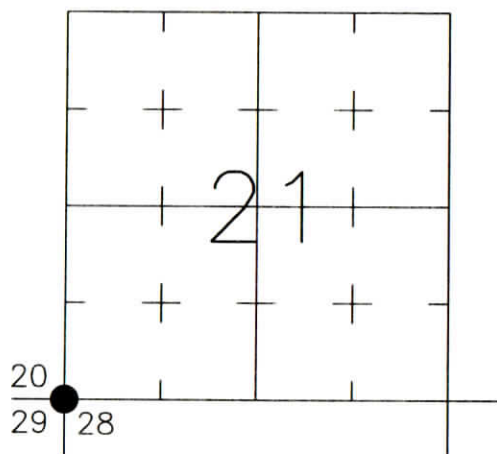


DESCRIPTION:

SOUTHWEST CORNER _____
SECTION 21, T. 6 S., R. 9 W.
2nd PRINCIPAL MERIDIAN

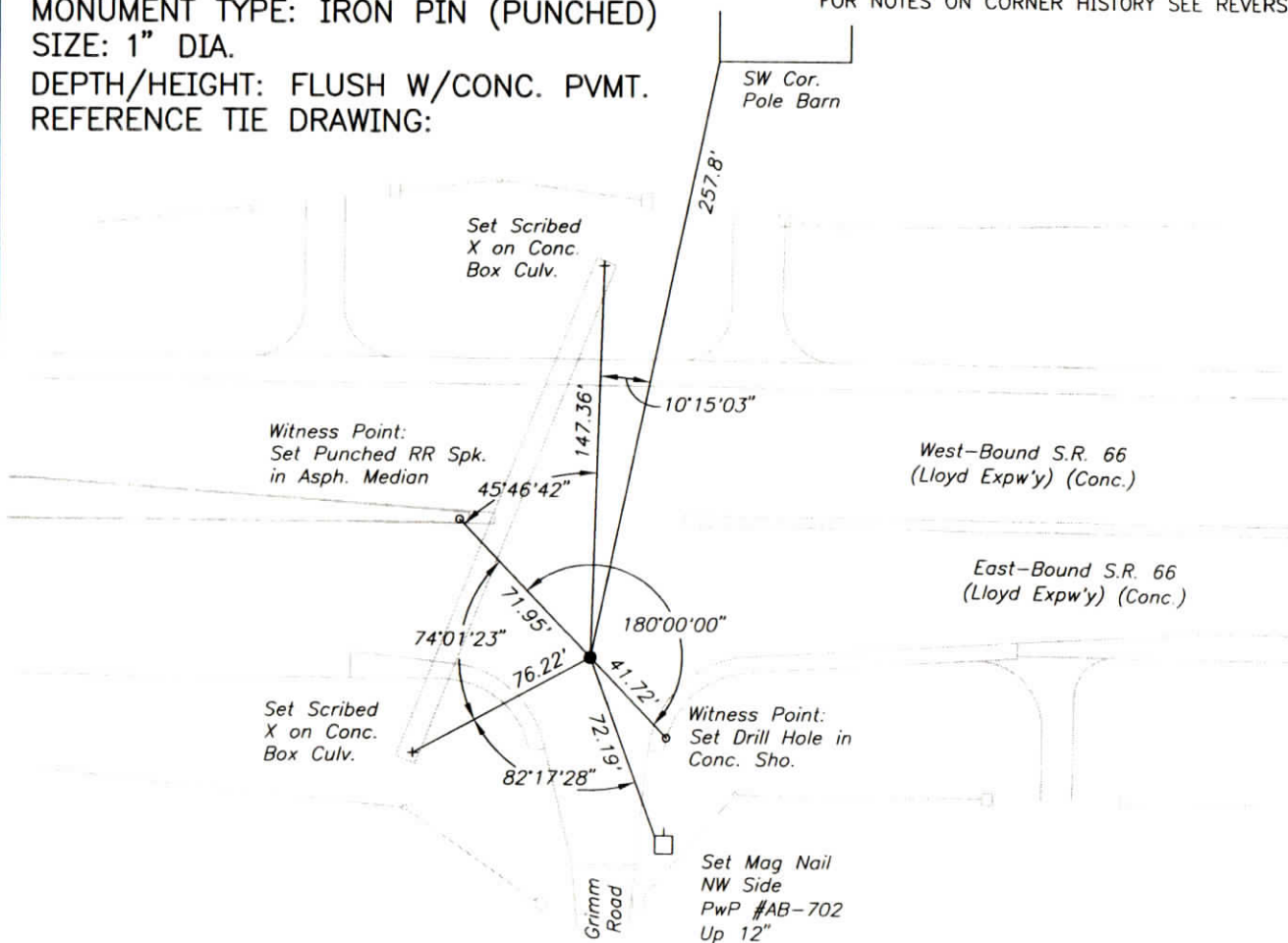
**WARRICK COUNTY SURVEYOR
JAMES NIEMEYER**

INDICATE CORNER REFERENCED:



MONUMENT TYPE: IRON PIN (PUNCHED)
SIZE: 1" DIA.
DEPTH/HEIGHT: FLUSH W/CONC. PVMT.
REFERENCE TIE DRAWING:

FOR NOTES ON CORNER HISTORY SEE REVERSE.



STATE PLANE COORDINATE DATA:
INDIANA WEST ZONE, NAD 83 (1997)
U.S. SURVEY FEET

X _____

Y _____

COORDINATES ESTABLISHED BY:

APPROVED BY:

DATE:

REFERENCED BY: K.S.KLEIN/G.F.BERRY

DATE: 7/28/05

APPROVED BY: P.JONES, RLS#9600016

DATE: 7/29/05

CORNER FILE CODE:
T6S-R9W-R-09

CORNER HISTORY:

ORIGINAL USPLS SURVEY: Corner established by Jacob Fowler, Dec. 19, 1805 "Post".

COUNTY SURVEYOR'S BOOKS: Book 1 P. 208 F.L.Davis WCS Sept. 1, 1864 (Mon. not identified).

Book 1 P. 283: O.B.Pasco WCS April 4, 1870 (Mon. not identified).

Book 3 P. 303: M.Klippel, Surveyor, Feb. 24, 1938 "Stone in place".

OTHER SURVEYS AND PLATS: Road plans for SR 66, INDOT (State Hwy. Comm.) Proj. 179(1) 1948, do not show a corner monument, but show a P.I. (no curve) with stationing that matches the section line stationing to the nearest tenth foot. The P.I. is approx. 5' north of the road centerline as of the date of the survey. The plans seem to suggest (but do not specify) that the P.I. was intended to represent the section corner.

A 1979 INDOT survey (Proj. STE-920(A)) for a proposed roadway running generally along Grimm Road (never constructed) indicates a PK nail marking the section corner, approximately 8' south of the pavement centerline.

Plat of survey by Elmo D. Dockery dated 3/7/87 (unrecorded, copy provided by Donald Adler) shows a PK nail in the centerline of S.R. 66. When compared with the 1948 road plans, it appears Mr. Dockery regarded the P.I. of SR 66 to be the section corner. The PK shown on his plat may have been placed as a re-establishment of the P.I. location.

Plat of survey by John W. Curry dated 12/30/87 (unrecorded, copy provided by Donald Adler) shows a PK nail found.

Location Control Route Survey for SR 66 (Doc. 1997R-007361) (section corner ties for this survey were performed in 1990); a PK nail was found and tied in, its position consistent with the 1979 INDOT survey, and identified as the apparent section corner. The PK was 8.51' south of the re-established P.I. (no curve) of S.R. 66, where a RR spike was placed. Dimensions from the PK to an iron pin 1/2 mile north matched the Curry survey within 0.24 feet. (Note that neither the Dockery plat nor the Curry plat had been found at the time of the route survey.) The PK nail's position would therefore have been approximately 3 feet south of the road centerline circa 1948.

CORNER FILE CODE:
T6S-R9W-R-09

An ALTA/ACSM Land Title Survey by Donald Ray Adler (Doc. 1995R-211) retraced the boundaries of the Dockery survey, and re-established the corner used by Elmo Dockery at a position 6' easterly of the spike marking the P.I. of SR 66.

VERIFICATION OF CORNER POSITION: July, 2003: Ties were made between the SR 66 Location Control Route Survey and Donald Adler's re-establishment of the Dockery survey. These appeared to confirm, at least in the northing position, that Mr. Dockery used the P.I. as the section corner; the source of the 6' discrepancy east-west is unknown but is presumed to result from differences in re-establishing the P.I. location.

The PK's former position (destroyed by milling) was referenced as the section corner, for consistency with the 1979 INDOT survey, the 1987 Curry survey, the SR 66 Location Control Route Survey, and subsequent survey work by others which was based on the PK nail. However, considerable uncertainty remains as to whether the P.I. location should be regarded as the corner. Although the 1948 road plans do not explain the basis for establishing the P.I. locations, several of the P.I.'s appear to have been attempts by the highway surveyors to mark the section/quarter section corners using evidence available at the time, and should not be easily dismissed.

~~Construction work currently in progress along SR 66 will include removal of the existing pavement and monuments; construction plans call for the placement of a section corner monument.~~

Perry E. Jones 7/28/03

July 2005: The PK's former position was staked and straddle points set. The 1" iron pin shown was placed (by others) in the concrete pavement. The straddle points were then used to verify the pin's position and set a punch mark, and new reference ties were taken. Perry E. Jones 7/29/05

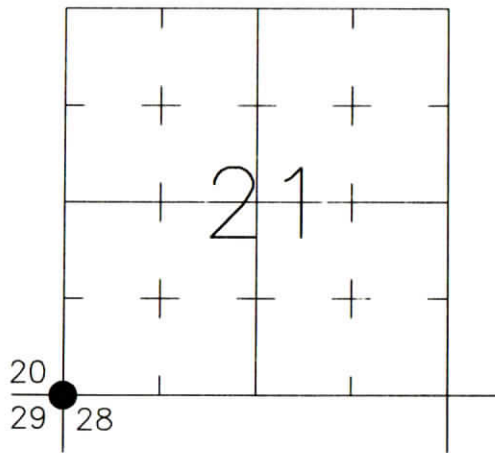
CORNER RECORD WARRICK COUNTY



DESCRIPTION:
SOUTHWEST CORNER _____
SECTION 21, T. 6 S., R. 9 W.
2nd PRINCIPAL MERIDIAN

WARRICK COUNTY SURVEYOR
KARAN HARGRAVE-BARNHILL

INDICATE CORNER REFERENCED:



STATE PLANE COORDINATE DATA:
INDIANA WEST ZONE, NAD 83 (1997)
U.S. SURVEY FEET

X _____

Y _____

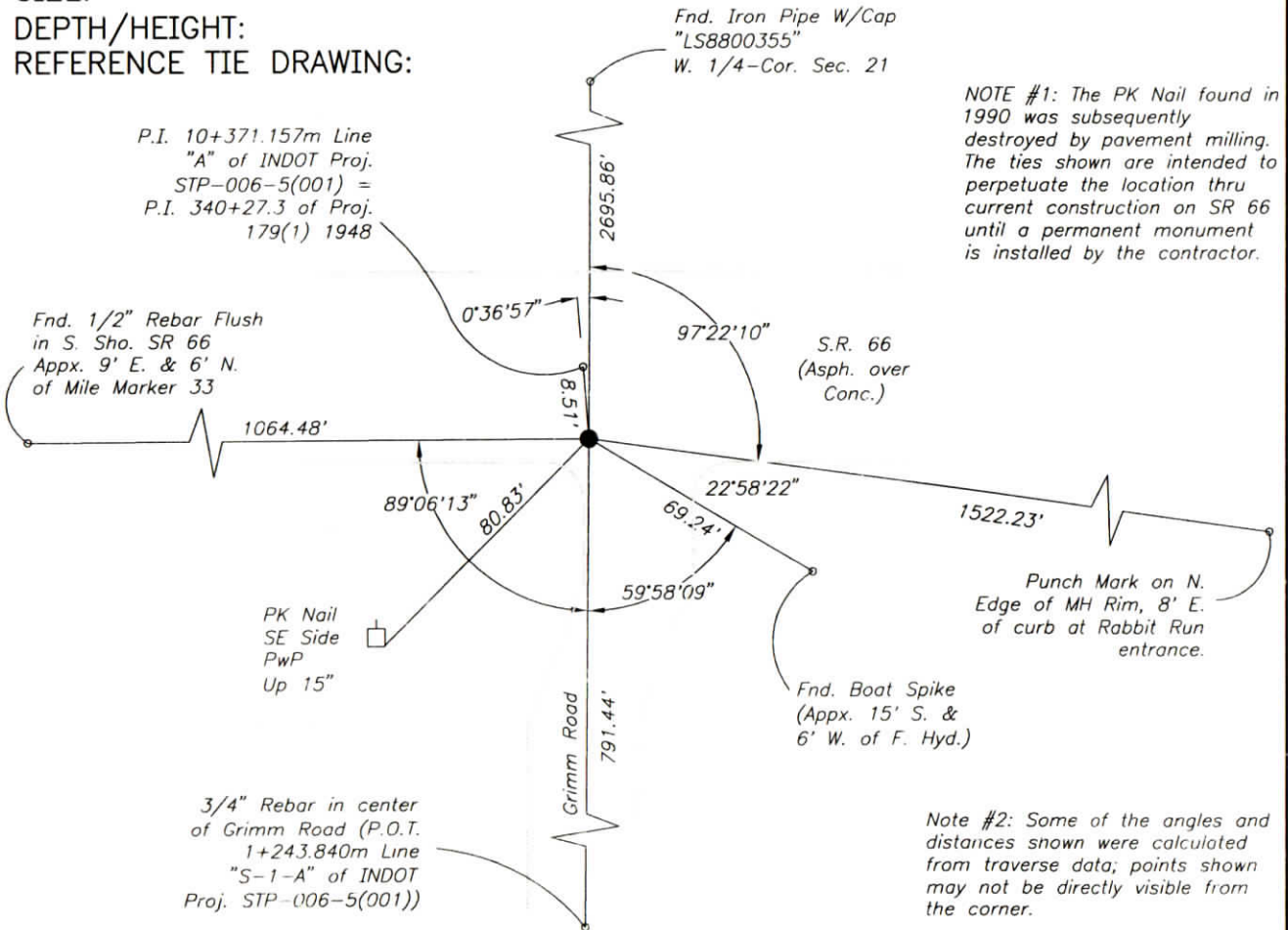
COORDINATES ESTABLISHED BY:

APPROVED BY:

DATE:

MONUMENT TYPE: SEE NOTE #1 AT RIGHT
SIZE:
DEPTH/HEIGHT:
REFERENCE TIE DRAWING:

FOR NOTES ON CORNER HISTORY SEE REVERSE.



NOTE #1: The PK Nail found in 1990 was subsequently destroyed by pavement milling. The ties shown are intended to perpetuate the location thru current construction on SR 66 until a permanent monument is installed by the contractor.

Note #2: Some of the angles and distances shown were calculated from traverse data; points shown may not be directly visible from the corner.

REFERENCED BY: R.HAHN/J.CRANE

DATE: 3/10/03

APPROVED BY: P.JONES, RLS#9600016

DATE: 7/28/03

CORNER FILE CODE:
T6S-R9W-R-09

CORNER HISTORY:

CORNER FILE CODE:
T6S-R9W-R-09

ORIGINAL USPLS SURVEY: Corner established by Jacob Fowler, Dec. 19, 1805 "Post".

COUNTY SURVEYOR'S BOOKS: Book 1 P. 208 F.L.Davis WCS Sept. 1, 1864 (Mon. not identified).

Book 1 P. 283: O.B.Pasco WCS April 4, 1870 (Mon. not identified).

Book 3 P. 303: M.Klippel, Surveyor, Feb. 24, 1938 "Stone in place".

OTHER SURVEYS AND PLATS: Road plans for SR 66, INDOT (State Hwy. Comm.) Proj. 179(1) 1948, do not show a corner monument, but show a P.I. (no curve) with stationing that matches the section line stationing to the nearest tenth foot. The P.I. is approx. 5' north of the road centerline as of the date of the survey. The plans seem to suggest (but do not specify) that the P.I. was intended to represent the section corner.

A 1979 INDOT survey (Proj. STE-920(A)) for a proposed roadway running generally along Grimm Road (never constructed) indicates a PK nail marking the section corner, approximately 8' south of the pavement centerline.

Plat of survey by Elmo D. Dockery dated 3/7/87 (unrecorded, copy provided by Donald Adler) shows a PK nail in the centerline of S.R. 66. When compared with the 1948 road plans, it appears Mr. Dockery regarded the P.I. of SR 66 to be the section corner. The PK shown on his plat may have been placed as a re-establishment of the P.I. location.

Plat of survey by John W. Curry dated 12/30/87 (unrecorded, copy provided by Donald Adler) shows a PK nail found.

Location Control Route Survey for SR 66 (Doc. 1997R-007361) (section corner ties for this survey were performed in 1990); a PK nail was found and tied in, its position consistent with the 1979 INDOT survey, and identified as the apparent section corner. The PK was 8.51' south of the re-established P.I. (no curve) of S.R. 66, where a RR spike was placed. Dimensions from the PK to an iron pin 1/2 mile north matched the Curry survey within 0.24 feet. (Note that neither the Dockery plat nor the Curry plat had been found at the time of the route survey.) The PK nail's position would therefore have been approximately 3 feet south of the road centerline circa 1948.

An ALTA/ACSM Land Title Survey by Donald Ray Adler (Doc. 1995R-211) retraced the boundaries of the Dockery survey, and re-established the corner used by Elmo Dockery at a position 6' easterly of the spike marking the P.I. of SR 66.

VERIFICATION OF CORNER POSITION: July, 2003: Ties were made between the SR 66 Location Control Route Survey and Donald Adler's re-establishment of the Dockery survey. These appeared to confirm, at least in the northing position, that Mr. Dockery used the P.I. as the section corner; the source of the 6' discrepancy east-west is unknown but is presumed to result from differences in re-establishing the P.I. location.

The PK's former position (destroyed by milling) was referenced as the section corner, for consistency with the 1979 INDOT survey, the 1987 Curry survey, the SR 66 Location Control Route Survey, and subsequent survey work by others which was based on the PK nail. However, considerable uncertainty remains as to whether the P.I. location should be regarded as the corner. Although the 1948 road plans do not explain the basis for establishing the P.I. locations, several of the P.I.'s appear to have been attempts by the highway surveyors to mark the section/quarter section corners using evidence available at the time, and should not be easily dismissed.

Construction work currently in progress along SR 66 will include removal of the existing pavement and monuments; construction plans call for the placement of a section corner monument.

Perry E. Jones 7/28/03

CORNER HISTORY:

CORNER FILE CODE:
T6S-R9W-R-11

ORIGINAL USPLS SURVEY: Corner established by Jacob Fowler, Dec. 20, 1805 "Post" (@39.90ch/79.80ch).

COUNTY SURVEYOR'S BOOKS: Book 1 P. 208: F.L. Davis WCS Sept. 1, 1864 Stone marked 1/2 S 28"

OTHER SURVEYS AND PLATS: Road plans for SR 66, INDOT (State Hwy. Comm.) Proj. 179(1) 1948, do not identify the corner, but show a P.I. located within about 10' of the midpoint of the section line. There are no property divisions running north and south, so it is unclear whether the plans imply the P.I. represents the 1/4-corner. The P.I. was in the approx. road centerline as of the date of the survey. It should be noted that the road plans identified the P.I. as "IPB" (Iron Pin Buried) whereas the majority of centerline control points were shown as "IPL" (Iron Pin Lightly Buried), which might suggest that this was a found monument.

Location Control Route Survey for SR 66 (Doc. 1997R-007361) (section corner ties for this survey were performed in 1990); The P.I. location from the 1948 road plans was re-established with a north-south uncertainty of about 0.7' and an east-west uncertainty of about 2'. With no evidence to the contrary, the P.I. was presumed to mark the 1/4-corner location (the P.I. is about 5.3' east and 4' south of the midpoint between the SW and SE corners of the section).

VERIFICATION OF CORNER POSITION: July 2003: Surveys and subdivision plats recorded since 1990 were reviewed and no additional information was found regarding this corner. The P.I. location shown (spike set in 1990 destroyed by milling) was referenced as the apparent quarter section corner. Although the 1948 road plans do not explain the basis for establishing the P.I. locations, several of the P.I.'s appear to have been attempts by the highway surveyors to mark the section/quarter section corners using evidence available at the time. Lacking evidence to the contrary, the P.I. location was presumed the best available evidence at present.

~~Construction work currently in progress along SR 66 will include removal of the existing pavement and monuments; construction plans call for the placement of a section corner monument.~~

Perry E. Jones 7/28/03

July 2005: The P.I.'s position was staked and straddle points set. The 1" iron pin shown was placed (by others) in the concrete pavement. The straddle points were then used to verify the pin's position and set a punch mark, and new reference ties were taken.

Perry E. Jones 7/29/05

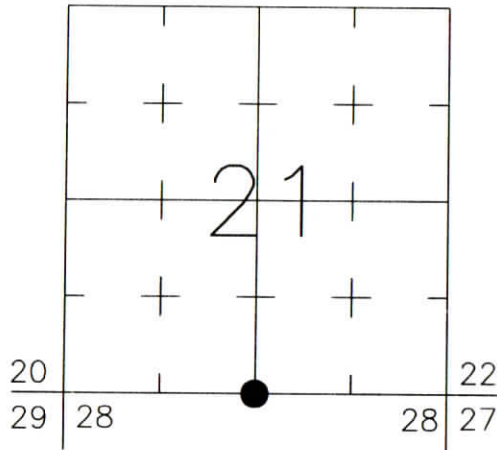
CORNER RECORD WARRICK COUNTY



DESCRIPTION:
SOUTHWEST CORNER SOUTHEAST QUARTER
SECTION 21, T. 6 S., R. 9 W.
 2nd PRINCIPAL MERIDIAN

WARRICK COUNTY SURVEYOR
 KARAN HARGRAVE-BARNHILL

INDICATE CORNER REFERENCED:



MONUMENT TYPE: SEE NOTE #1 BELOW
 SIZE:
 DEPTH/HEIGHT:
 REFERENCE TIE DRAWING:

FOR NOTES ON CORNER HISTORY SEE REVERSE.

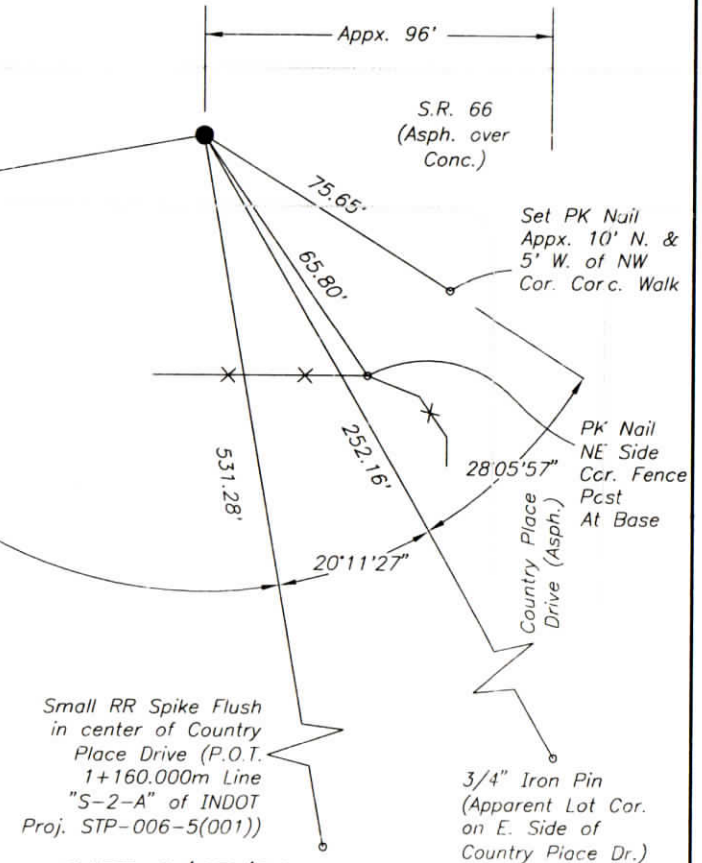
NOTE #1: The RR spike set in 1990 was subsequently destroyed by pavement milling. The ties shown are intended to perpetuate the location thru current construction on SR 66 until a permanent monument is installed by the contractor.

Punch Mark on N. Edge of MH Rim, 8' E. of E. curb at Rabbit Run entrance.

Note #2: Some of the angles and distances shown were calculated from traverse data; points shown may not be directly visible from the corner.

REFERENCED BY: P.E.J., A.J.G.

APPROVED BY: P.JONES, RLS#9600016



STATE PLANE COORDINATE DATA:
 INDIANA WEST ZONE, NAD 83 (1997)
 U.S. SURVEY FEET

X _____

Y _____

COORDINATES ESTABLISHED BY:

APPROVED BY:

DATE:

DATE: 6/13/02

DATE: 7/28/03

CORNER FILE CODE:
 T6S-R9W-R-11

CORNER HISTORY:

CORNER FILE CODE:
T6S-R9W-R-11

ORIGINAL USPLS SURVEY: Corner established by Jacob Fowler, Dec. 20, 1805 "Post" (@39.90ch/79.80ch).

COUNTY SURVEYOR'S BOOKS: Book 1 P. 208: F.L. Davis WCS Sept. 1, 1864 Stone marked 1/2 S 28"

OTHER SURVEYS AND PLATS: Road plans for SR 66, INDOT (State Hwy. Comm.) Proj. 179(1) 1948, do not identify the corner, but show a P.I. located within about 10' of the midpoint of the section line. There are no property divisions running north and south, so it is unclear whether the plans imply the P.I. represents the 1/4-corner. The P.I. was in the approx. road centerline as of the date of the survey. It should be noted that the road plans identified the P.I. as "IPB" (Iron Pin Buried) whereas the majority of centerline control points were shown as "IPL" (Iron Pin Lightly Buried), which might suggest that this was a found monument.

Location Control Route Survey for SR 66 (Doc. 1997R-007361) (section corner ties for this survey were performed in 1990); The P.I. location from the 1948 road plans was re-established with a north-south uncertainty of about 0.7' and an east-west uncertainty of about 2'. With no evidence to the contrary, the P.I. was presumed to mark the 1/4-corner location (the P.I. is about 5.3' east and 4' south of the midpoint between the SW and SE corners of the section).

VERIFICATION OF CORNER POSITION: July 2003: Surveys and subdivision plats recorded since 1990 were reviewed and no additional information was found regarding this corner. The P.I. location shown (spike set in 1990 destroyed by milling) was referenced as the apparent quarter section corner. Although the 1948 road plans do not explain the basis for establishing the P.I. locations, several of the P.I.'s appear to have been attempts by the highway surveyors to mark the section/quarter section corners using evidence available at the time. Lacking evidence to the contrary, the P.I. location was presumed the best available evidence at present.

Construction work currently in progress along SR 66 will include removal of the existing pavement and monuments; construction plans call for the placement of a section corner monument.

Perry E. Jones 7/28/03

CORNER RECORD
WARRICK COUNTY



DESCRIPTION:

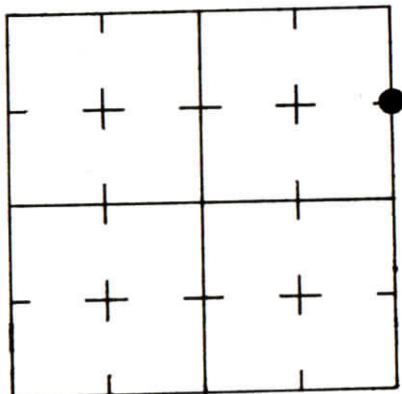
SE CORNER NE 1/4 NE 1/2

SECTION 21, T. 6 S. R. 9 W.

2nd PRINCIPLE MERIDIAN

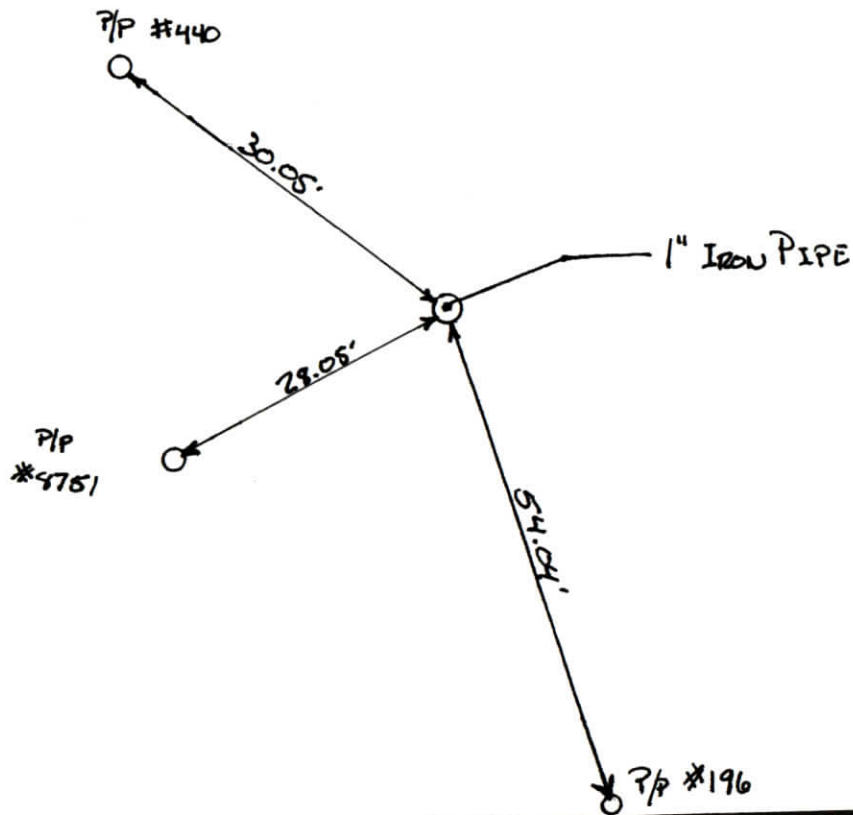
WARRICK COUNTY SURVEYOR
KARAN HARGRAVE-BARNHILL

INDICATE CORNER REFERENCED



DESCRIBE CORNER REFERENCED

LOEHR ACRES SUB.



STATE PLANE COORDINATE DATA

INDIANA ZONE: WEST

X _____

Y _____

ESTABLISHED BY:

APPROVED BY

DATE

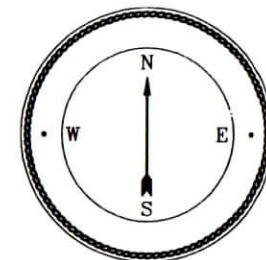
REFERENCED BY:

WILLIAM Y. BIVINS

DATE

2-2-98

CORNER RECORD WARRICK COUNTY

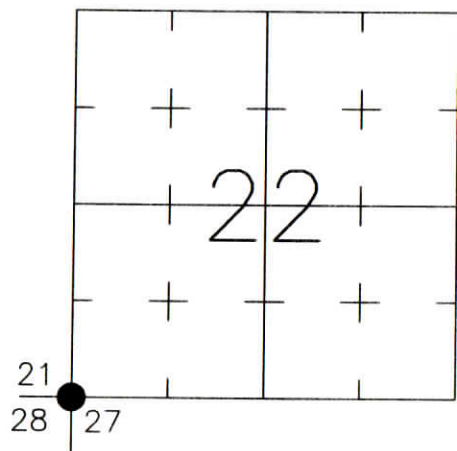


DESCRIPTION:

SOUTHWEST CORNER _____
SECTION 22, T. 6 S., R. 9 W.
2nd PRINCIPAL MERIDIAN

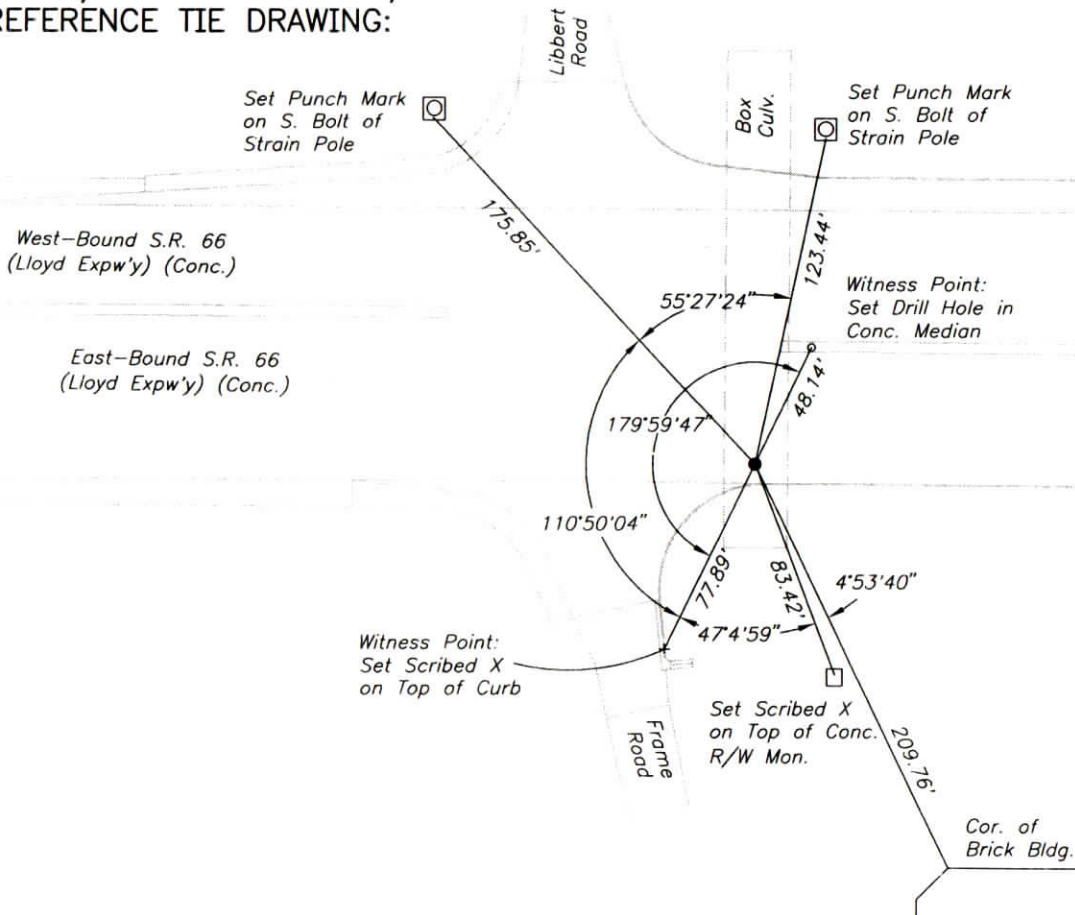
**WARRICK COUNTY SURVEYOR
JAMES NIEMEYER**

INDICATE CORNER REFERENCED:



MONUMENT TYPE: IRON PIN (PUNCHED)
SIZE: 1" DIA.
DEPTH/HEIGHT: FLUSH W/CONC. PVMT.
REFERENCE TIE DRAWING:

FOR NOTES ON CORNER HISTORY SEE REVERSE.



STATE PLANE COORDINATE DATA:
INDIANA WEST ZONE, NAD 83 (1997)
U.S. SURVEY FEET

X _____
Y _____

COORDINATES ESTABLISHED BY:

APPROVED BY:

DATE:

REFERENCED BY: K.S.KLEIN/G.F.BERRY

DATE: 7/28/05

APPROVED BY: P.JONES, RLS#9600016

DATE: 7/29/05

CORNER FILE CODE:
T6S-R9W-R-13

CORNER HISTORY:

CORNER FILE CODE:
T6S-R9W-R-13

ORIGINAL USPLS SURVEY: Corner established by Jacob Fowler, Dec. 20, 1805 "Post".

COUNTY SURVEYOR'S BOOKS: Book 1 P. 56: W.B. Wright WCS Nov. 1, 1855 (Mon. not identified - found post?)

OTHER SURVEYS AND PLATS: "Corner Record" card shows reference to PK nail as taken from the 1989 plat of Gardner Subdivision.

Road plans for SR 66, INDOT (State Hwy. Comm.) Proj. 179(1) 1948, show a station-plus for the section line running south from this corner, but do not show any monument at that station.

Plats of Woodstone Manor (1974) and Hillside Terrace Phase 1 (1982) include dimensions to the section corner.

Location Control Route Survey for SR 66 (Doc. 1997R-007361) (section corner ties for this survey were performed in 1990); a PK nail was found which matched reference ties from the Co. Surveyor's "Corner Record" card. Another PK nail was found 0.49' W and 0.29' N.

VERIFICATION OF CORNER POSITION: June 2002; Measured dimensions from the PK's former position (PK destroyed by milling), as shown on the SR 66 Location Control Route Survey, to other monuments found were compared to the Woodstone Manor and Hillside Terrace Phase 1 plats, and generally agreed within 0.1 foot. Additional ties were made to aid in perpetuating the corner position thru upcoming construction on S.R. 66

~~July 2003; Construction work currently in progress along SR 66 will include removal of the existing pavement and monuments; construction plans call for the placement of a section corner monument.~~

Perry E. Jones 7/28/03

July 2005: The PK's former position was staked and straddle points set. The 1" iron pin shown was placed (by others) in the concrete pavement. The straddle points were then used to verify the pin's position and set a punch mark, and new reference ties were taken.

Perry E. Jones 7/29/05

CORNER HISTORY:

CORNER FILE CODE:
T6S-R9W-P-13

ORIGINAL USPLS SURVEY: Corner established by Jacob Fowler, Dec. 20, 1805 "Post".

COUNTY SURVEYOR'S BOOKS: Book 1 P. 125: John C. Frary WCS Nov. 4, 1859 "Stump of old tree standing and stake set by former surveyor"

Book 1 P. 252: O.B.Pasco WCS Nov. 26, 1866 (Mon. not identified)

Book 3 P. 152: Louis Meyer WCS July 18, 1910 "Sand Stone corner was set, witness rock ... South 37d East 47 Links"

OTHER SURVEYS AND PLATS: A RR Spike found 2" below grade was tied in and referenced on the Location Control Route Survey for SR 66 (Doc. 1997R-007361). Its origin is unknown. (Surveyor's Report mistakenly notes that it matches Co. Surveyor records - this was not the case.)

A plat of survey by Donald Ray Adler (Doc. 1995R-211) shows a RR spike and notes that it is not a record corner.

VERIFICATION OF CORNER POSITION: September, 2002: The railroad spike shown was found in place. A 5/8" rebar (shown) was found along the north line of the property described in 2001R-015171, marking the apparent east boundary of Libbert Road. The north-south distance between the spike and rebar (assuming the rebar at a 25' offset from the section line) agreed with the deed dimension within 0.2 feet. No additional ties were made to verify the spike in the east-west direction.

Perry E. Jones 9/23/02

CORNER RECORD
WARRICK COUNTY

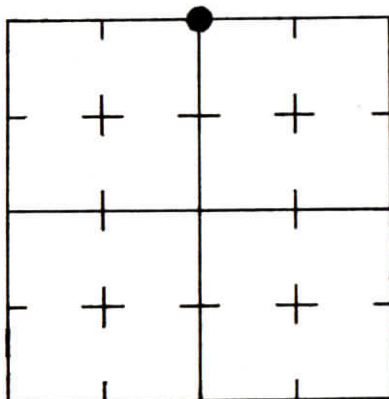


DESCRIPTION:

NW CORNER W 1/2 NW 1/4 NE 1/4
SECTION 22, T. 6 S. R. 9 W.
2nd PRINCIPLE MERIDIAN

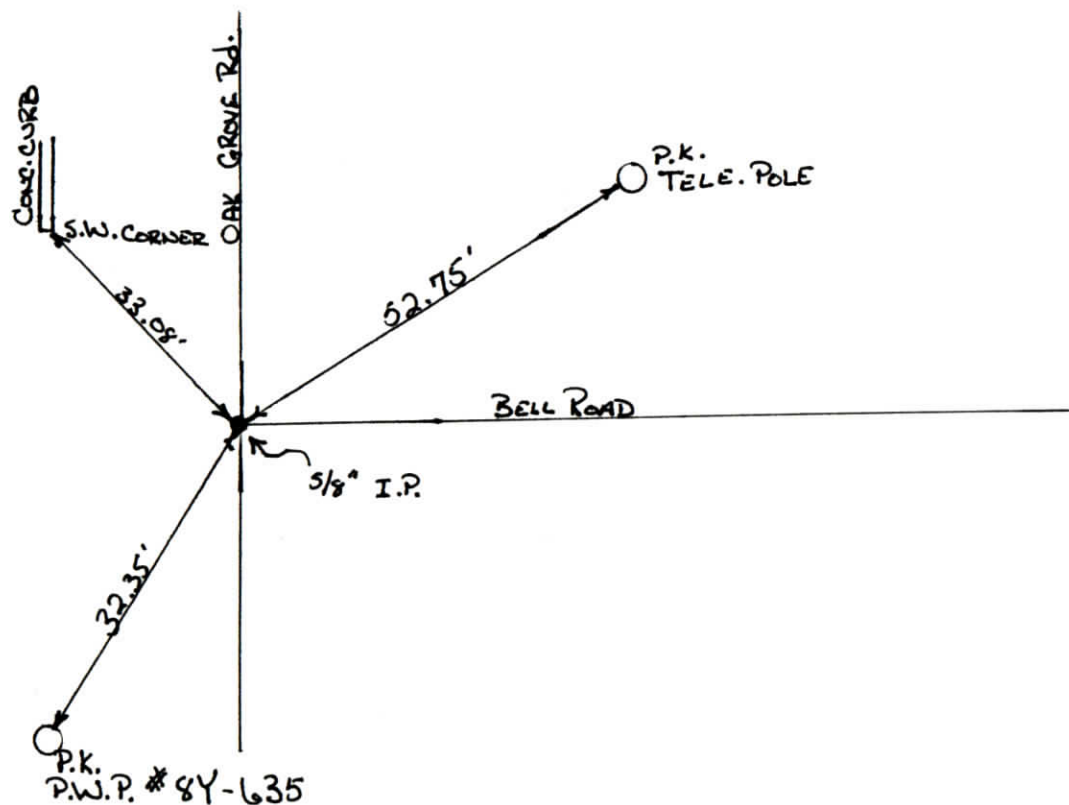
WARRICK COUNTY SURVEYOR
KARAN HARGRAVE-BARNHILL

INDICATE CORNER REFERENCED



DESCRIBE CORNER REFERENCED

LABELLE MAJOR



STATE PLANE COORDINATE DATA

INDIANA ZONE: WEST

X _____

Y _____

ESTABLISHED BY:

APPROVED BY

DATE

REFERENCED BY:

DATE

ELMO D. DOCKERY

6-27-90

CORNER RECORD
WARRICK COUNTY



DESCRIPTION :

NW CORNER _____

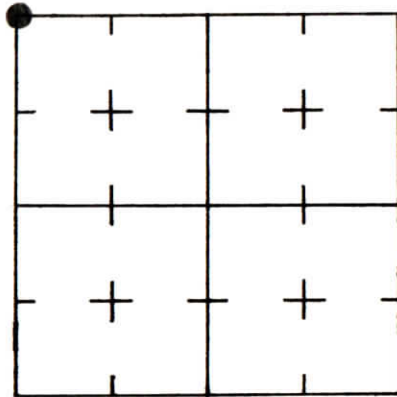
SECTION 22, T. 6 S. R. 9 W.

2nd PRINCIPLE MERIDIAN

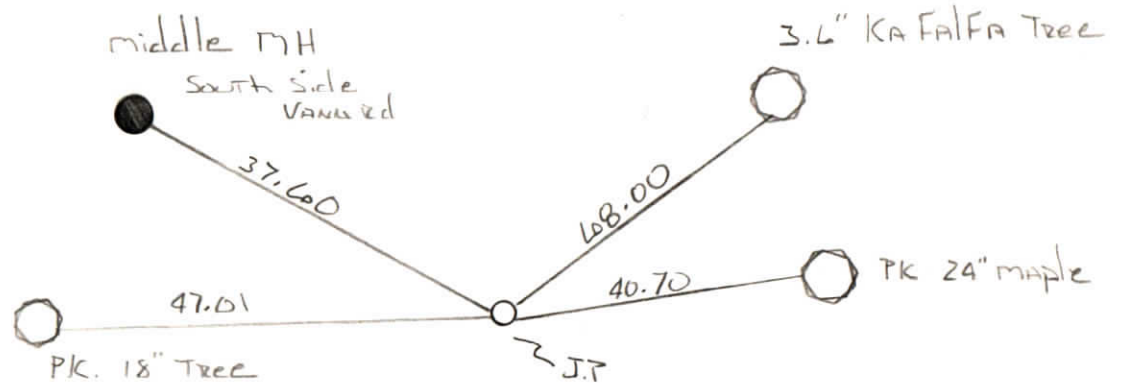
WARRICK COUNTY SURVEYOR

MICHAEL IRVIN

INDICATE CORNER REFERENCED



DESCRIBE CORNER REFERENCED



STATE PLANE COORDINATE DATA

INDIANA ZONE: WEST

X _____

Y _____

ESTABLISHED BY:

APPROVED BY

DATE

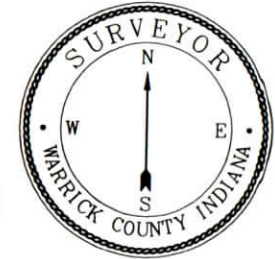
REFERENCED BY:

DATE

Elmo Lockery

MARCH 8 1994

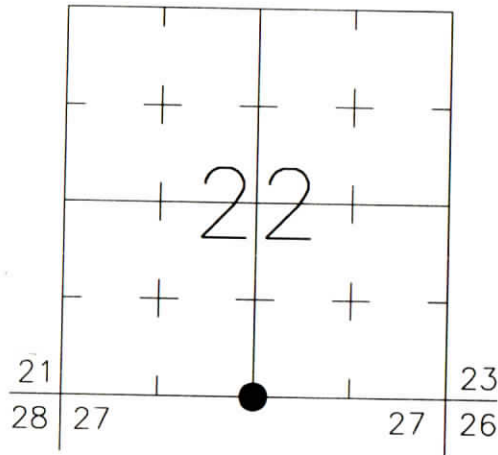
CORNER RECORD
WARRICK COUNTY



DESCRIPTION:
SOUTHWEST CORNER SOUTHEAST QUARTER
SECTION 22, T. 6 S., R. 9 W.
2nd PRINCIPAL MERIDIAN

WARRICK COUNTY SURVEYOR
JAMES NIEMEYER

INDICATE CORNER REFERENCED:



MONUMENT TYPE: IRON PIN (PUNCHED)
SIZE: 1" DIA.
DEPTH/HEIGHT: FLUSH W/CONC. PVMT.
REFERENCE TIE DRAWING:

FOR NOTES ON CORNER HISTORY SEE REVERSE.

STATE PLANE COORDINATE DATA:
INDIANA WEST ZONE, NAD 83 (1997)
U.S. SURVEY FEET

X ---
Y ---

COORDINATES ESTABLISHED BY:

APPROVED BY:

DATE:

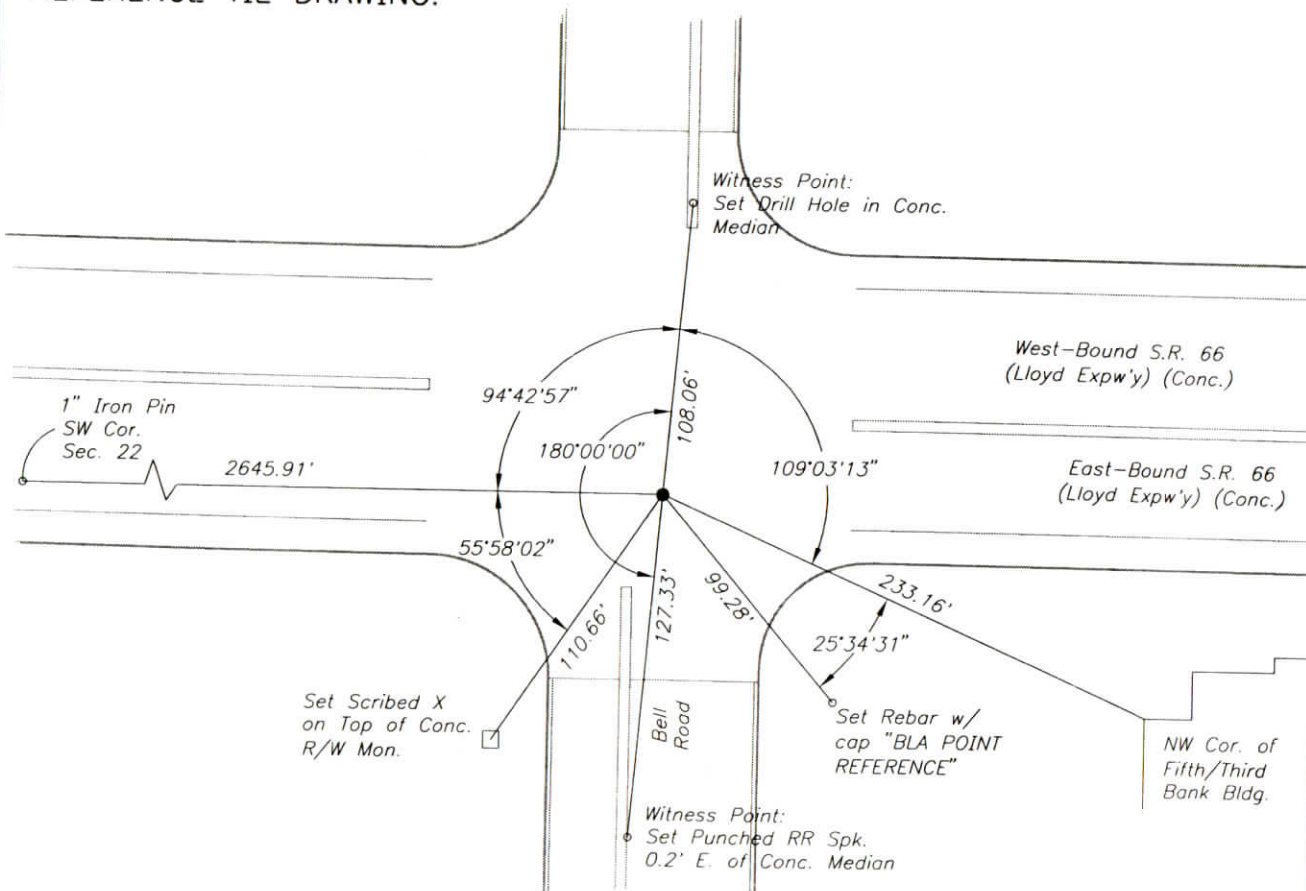
REFERENCED BY: K.S.KLEIN/G.F.BERRY

DATE: 7/28/05

APPROVED BY: P.JONES, RLS#9600016

DATE: 7/29/05

CORNER FILE CODE:
T6S-R9W-R-15



CORNER HISTORY:

CORNER FILE CODE:
T6S-R9W-R-15

ORIGINAL USPLS SURVEY: Corner established by Jacob Fowler, Dec. 20, 1805 "Post".

COUNTY SURVEYOR'S BOOKS: Book 1 P. 56: W.B. Wright WCS Nov. 1, 1855 "Stone"

OTHER SURVEYS AND PLATS: "Corner Record" card shows references to PK nail as taken from the 1979 plat of Bell Oaks Subdivision.

A 1/2" rebar was tied in and referenced on the Bell Road Route Survey (Bernardin-Lochmueller & Assoc. 1989, unrecorded). Reference ties matched those to the PK shown on the County Surveyor's "Corner Record" card.

Location Control Route Survey for SR 66 (Doc. 1997R-007361) (section corner ties for this survey were performed in 1990); the 1/2" rebar was tied in and referenced.

A plat of survey by James Q. Morley (Doc. 1996R-004748) shows a 1/2" iron rod found.

VERIFICATION OF CORNER POSITION: June, 2002: Dimensions shown on the 1996 Morley survey were compared with the SR 66 Location Control Route Survey and found to be reasonably consistent. Additional ties to the 1/2" rebar shown were obtained.

~~Construction work currently in progress along SR 66 will include removal of the existing pavement and monuments; construction plans call for the placement of a section corner monument.~~

Perry E. Jones 7/28/03

July 2005: The rebar's former position was staked and straddle points set. The 1" iron pin shown was placed (by others) in the concrete pavement. The straddle points were then used to verify the pin's position and set a punch mark, and new reference ties were taken.

Perry E. Jones 7/29/05

CORNER RECORD
WARRICK COUNTY

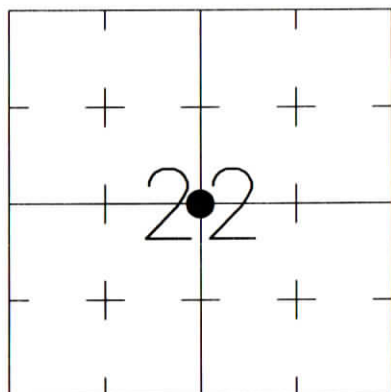


DESCRIPTION:
SOUTHWEST CORNER NORTHEAST QUARTER
SECTION 22, T. 6 S., R. 9 W.
2nd PRINCIPLE MERIDIAN

WARRICK COUNTY SURVEYOR
KARAN HARGRAVE-BARNHILL

FOR NOTES ON CORNER HISTORY SEE REVERSE.

INDICATE CORNER REFERENCED:



MONUMENT TYPE: IRON PIN
SIZE: 5/8" DIA.
DEPTH/HEIGHT: 2" BELOW PVMT. GRADE
REFERENCE TIE DRAWING:

STATE PLANE COORDINATE DATA:
INDIANA WEST ZONE, NAD 83 (1997)
U.S. SURVEY FEET

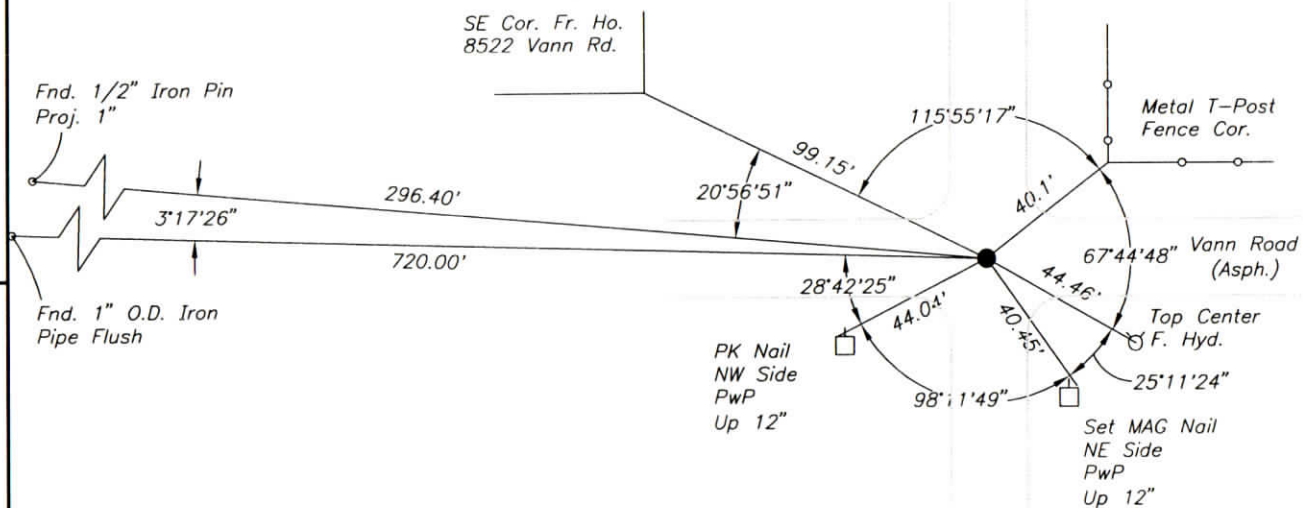
X ----

Y ----

COORDINATES ESTABLISHED BY:

APPROVED BY:

DATE:



REFERENCED BY: D.DREES/K.KLEIN

DATE: 9/3/02

APPROVED BY: P.JONES, RLS#9600016

DATE: 9/12/02

CORNER FILE CODE:
T6S-R9W-P-15

CORNER HISTORY:

CORNER FILE CODE:
T6S-R9W-P-15

ORIGINAL USPLS SURVEY: (Center of Section not monumented by USPLS Survey)

COUNTY SURVEYOR'S BOOKS: Book 1 P. 125: John C. Frary WCS Nov. 4, 1859 Stone Marked + "

Book 1 P. 252: O.B.Pasco WCS Nov. 26, 1866 (Mon. not identified)"

OTHER SURVEYS AND PLATS: "Corner Record" cards show 1973 reference to I.P., 1993 reference to 5/8" I.P. taken from plat of Kingston Manor Section "A".

A 5/8" rebar was tied in on the Bell Road Route Survey (Bernardin-Lochmueller & Assoc. 1989, unrecorded).

Plat of survey by James Q. Morley (Doc. 1996R-004748) shows a 5/8" iron rod found.

VERIFICATION OF CORNER POSITION: September, 2002: The 5/8" rebar shown was found in place. Neither of the Corner Record Card references could be used to verify the position. Ties made previously to corner monuments approx. 1/4 mile and 1/2 mile south agreed with the 1996 Morley survey within 0.1'.

Perry E. Jones 9/12/02

CORNER RECORD
WARRICK COUNTY



DESCRIPTION:

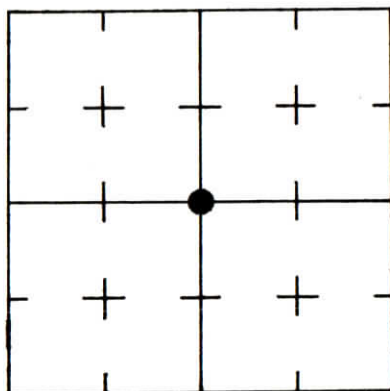
SW CORNER 5/2 NE 1/4

SECTION 22, T. 6 S. R. 9 W.

2nd PRINCIPLE MERIDIAN

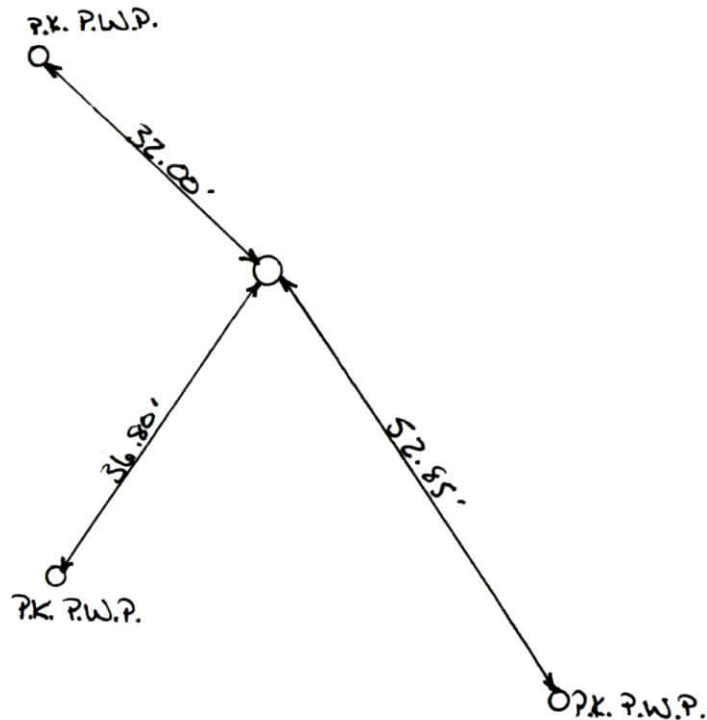
WARRICK COUNTY SURVEYOR
KARAN HARGRAVE-BARNHILL

INDICATE CORNER REFERENCED



DESCRIBE CORNER REFERENCED

KINGSTON/EASTBROOKE Sec. "E"



STATE PLANE COORDINATE DATA

INDIANA ZONE: WEST

X _____

Y _____

ESTABLISHED BY:

APPROVED BY

DATE

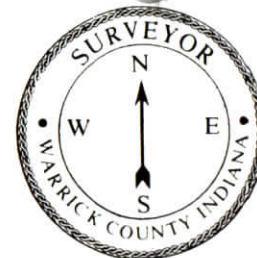
REFERENCED BY:

DATE

ELM.O.D. DOCKERY

12-10-96

CORNER RECORD
WARRICK COUNTY



DESCRIPTION:

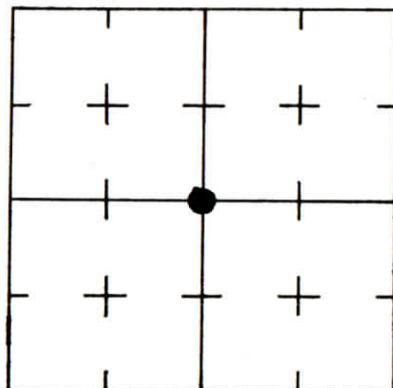
SW CORNER S¹/₂ NE¹/₄

SECTION 22, T. 6 S. R. 9 W.

2nd PRINCIPLE MERIDIAN

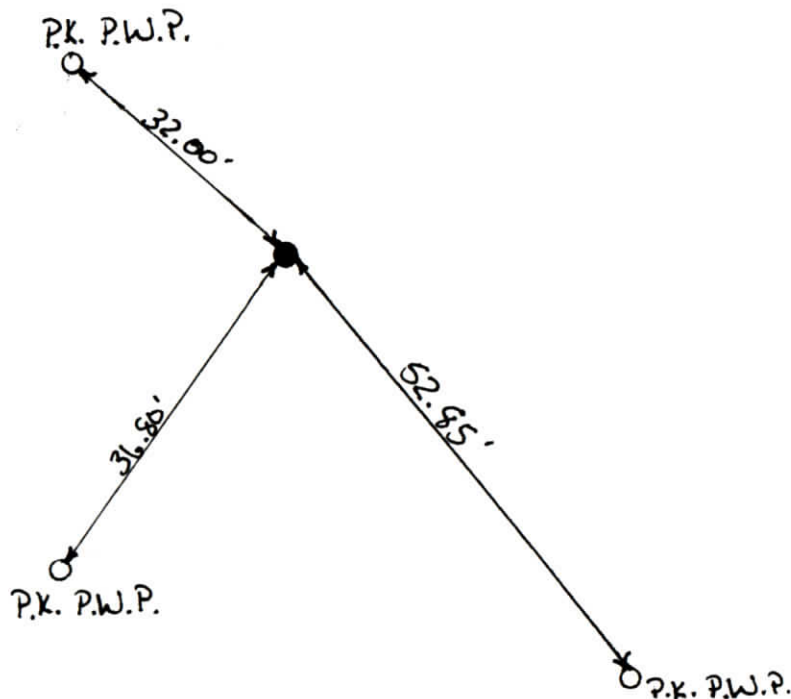
WARRICK COUNTY SURVEYOR
KARAN HARGRAVE-BARNHILL

INDICATE CORNER REFERENCED



DESCRIBE CORNER REFERENCED

KINGSTON/EASTBROOK SEC. "D"



STATE PLANE COORDINATE DATA

INDIANA ZONE: WEST

X _____

Y _____

ESTABLISHED BY:

APPROVED BY

DATE

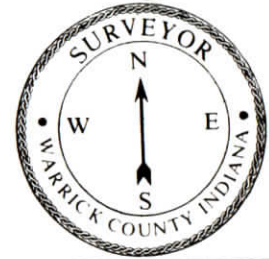
REFERENCED BY:

DATE

FLMO D. DUCKERY

6-20-95

CORNER RECORD
WARRICK COUNTY



DESCRIPTION:

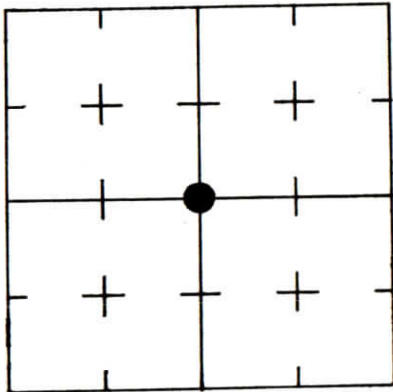
SW CORNER S¹/₂ NE¹/₄

SECTION 22, T. 6 S. R. 9 W.

2nd PRINCIPLE MERIDIAN

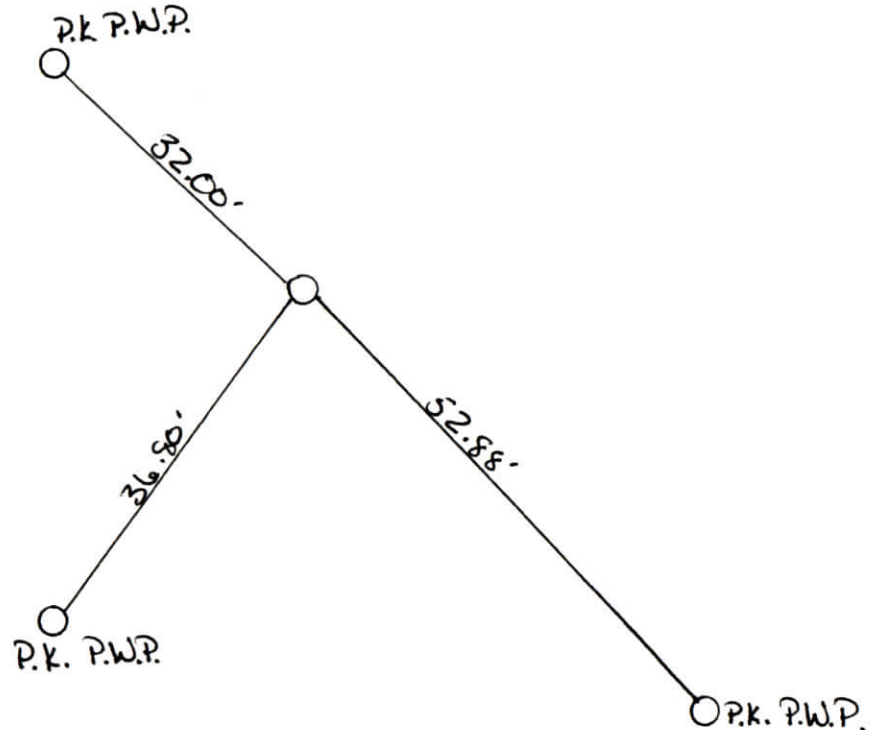
WARRICK COUNTY SURVEYOR
KARAN HARGRAVE-BARNHILL

INDICATE CORNER REFERENCED



DESCRIBE CORNER REFERENCED

KINGSTON/EASTBROOKE Sec. "C"



STATE PLANE COORDINATE DATA

INDIANA ZONE: WEST

X _____

Y _____

ESTABLISHED BY:

APPROVED BY

DATE

REFERENCED BY:

ELMOD. DockERY

DATE

6-10-95

CORNER RECORD
WARRICK COUNTY



DESCRIPTION:

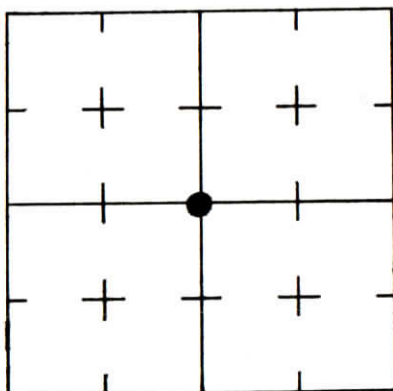
SW CORNER $\frac{5}{2}$ NE $\frac{1}{4}$

SECTION 27, T. 6 S. R. 9 W.

2nd PRINCIPLE MERIDIAN

WARRICK COUNTY SURVEYOR
KARAN HARGRAVE-BARNHILL

INDICATE CORNER REFERENCED



DESCRIBE CORNER REFERENCED

KINGSTON/EASTBROOKE SEC "B"

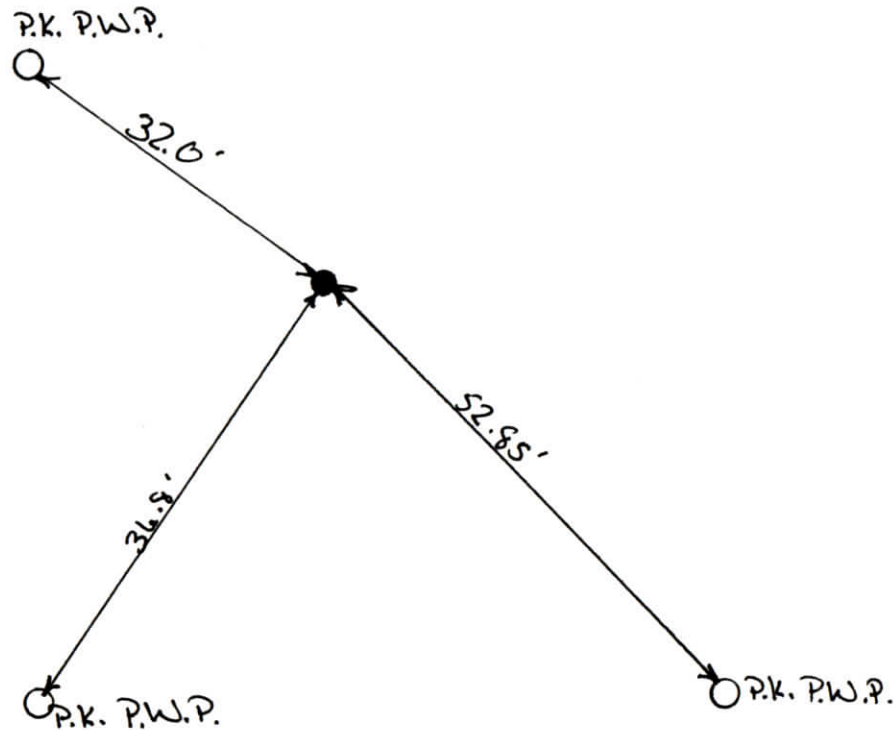
STATE PLANE COORDINATE DATA

INDIANA ZONE: WEST

X _____

Y _____

ESTABLISHED BY:



APPROVED BY

DATE

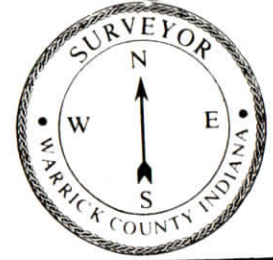
REFERENCED BY:

DATE

ELMO D. DOCKERY

8-10-94

CORNER RECORD
WARRICK COUNTY



DESCRIPTION :

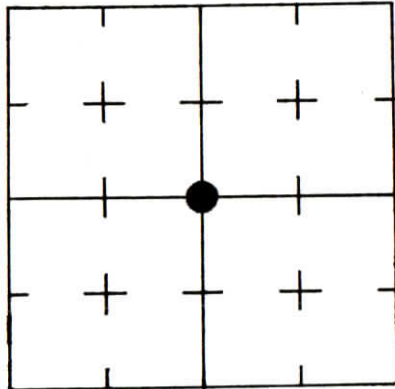
SW CORNER S 1/2 NE 1/4

SECTION 22, T. 6 S. R. 9 W.

2nd PRINCIPLE MERIDIAN

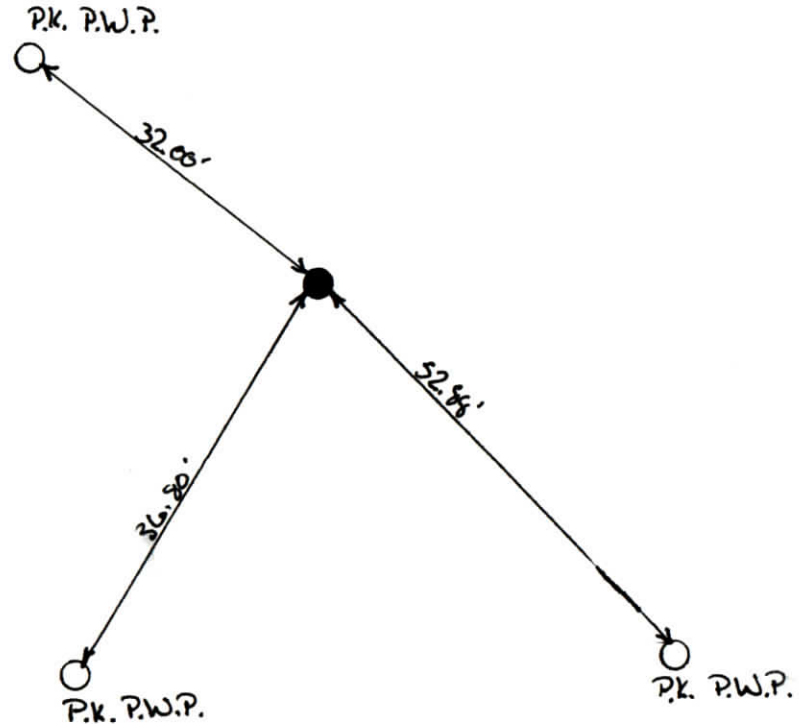
WARRICK COUNTY SURVEYOR
KARAN HARGRAVE-BARNHILL

INDICATE CORNER REFERENCED



DESCRIBE CORNER REFERENCED

KINGSTON/EAST BROOKE SEC. "A"



STATE PLANE COORDINATE DATA

INDIANA ZONE: WEST

X _____

Y _____

ESTABLISHED BY:

APPROVED BY

DATE

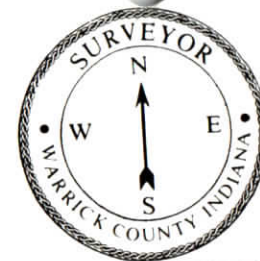
REFERENCED BY:

ELMO D. DOCKERY

DATE

5-20-94

CORNER RECORD
WARRICK COUNTY



DESCRIPTION:

SW CORNER S 1/2 NE 1/4

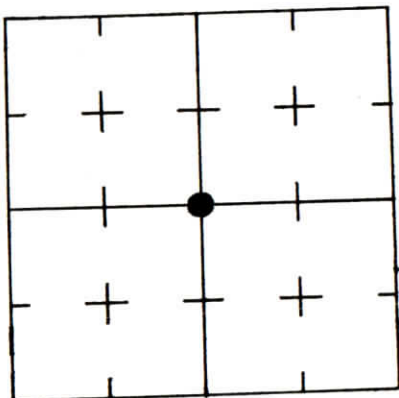
SECTION 22, T. 6 S.

R. 9 W.

2nd PRINCIPLE MERIDIAN

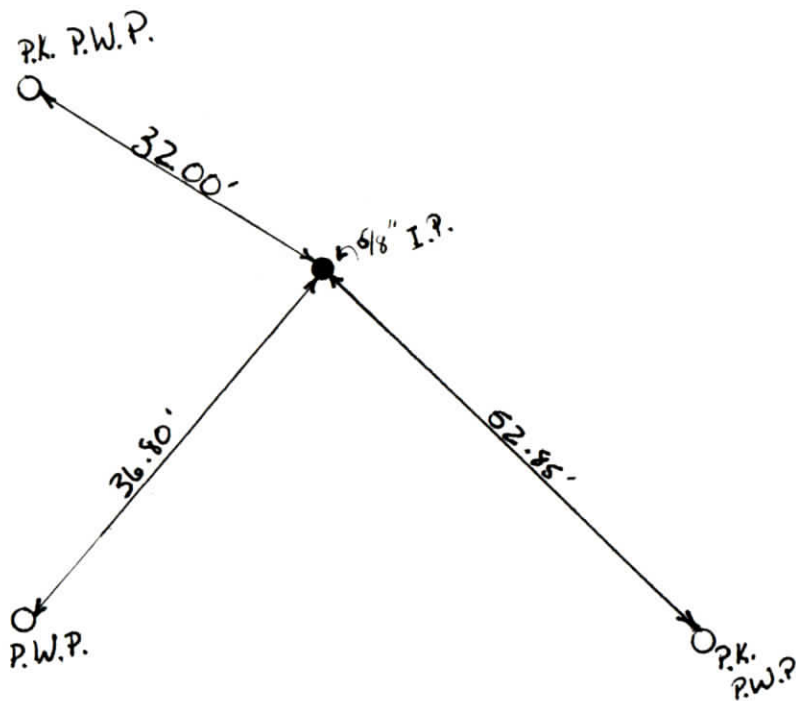
WARRICK COUNTY SURVEYOR
KARAN HARGRAVE-BARNHILL

INDICATE CORNER REFERENCED



DESCRIBE CORNER REFERENCED

KINGSTON MANOR SEC. "B"



STATE PLANE COORDINATE DATA

INDIANA ZONE: WEST

X _____

Y _____

ESTABLISHED BY:

APPROVED BY

DATE

REFERENCED BY:

ELMO D. DOCKERY

DATE

10-21-93

CORNER RECORD
WARRICK COUNTY



DESCRIPTION:

SW CORNER S/2 NE 1/4

SECTION 22, T. 6 S. R. 9 W.

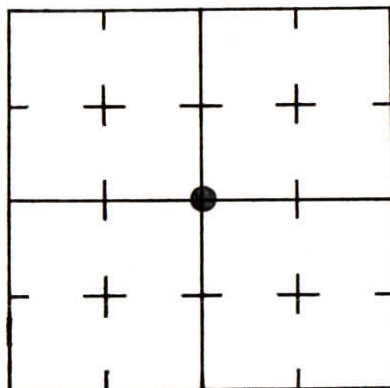
2nd PRINCIPLE MERIDIAN

WARRICK COUNTY SURVEYOR

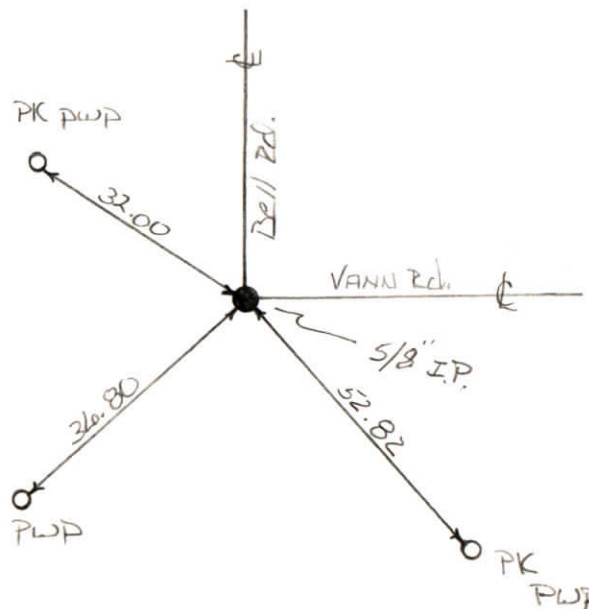
MICHAEL IRVIN

KINGSTON/EASTBROOK SEC A-E

INDICATE CORNER REFERENCED



DESCRIBE CORNER REFERENCED



STATE PLANE COORDINATE DATA

INDIANA ZONE: WEST

X _____

Y _____

ESTABLISHED BY:

APPROVED BY

DATE

REFERENCED BY:

Elmo Dockery

DATE

JUNE 9/1993

CORNER RECORD
WARRICK COUNTY



DESCRIPTION:

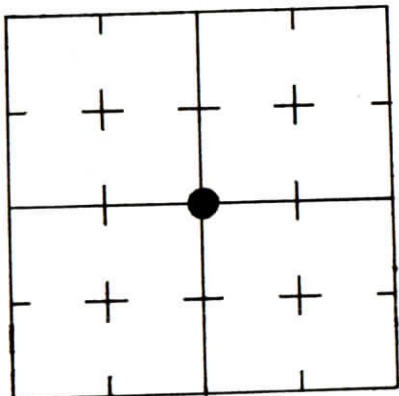
SW CORNER S 1/2 NE 1/4

SECTION 22, T. 6 S. R. 9 W.

2nd PRINCIPLE MERIDIAN

WARRICK COUNTY SURVEYOR
KARAN HARGRAVE-BARNHILL

INDICATE CORNER REFERENCED



DESCRIBE CORNER REFERENCED

KINGSTON MANOR SEC. "A"

P.K. P.W.P.

32.0'

36.80'

P.W.P.

52.85'

P.K. P.W.P.

STATE PLANE COORDINATE DATA

INDIANA ZONE: WEST

X _____

Y _____

ESTABLISHED BY:

APPROVED BY

DATE

REFERENCED BY:

ELMO D. DOCKERY

DATE

9-12-93

CORNER RECORD
WARRICK COUNTY

DESCRIPTION:

SE CORNER NE¹/₄ NE¹/₄

SECTION 22, T. 6 S.

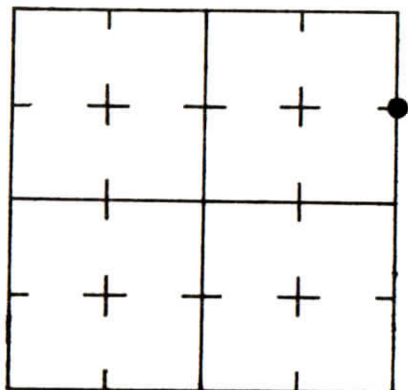
R. 9 W.

2nd PRINCIPLE MERIDIAN

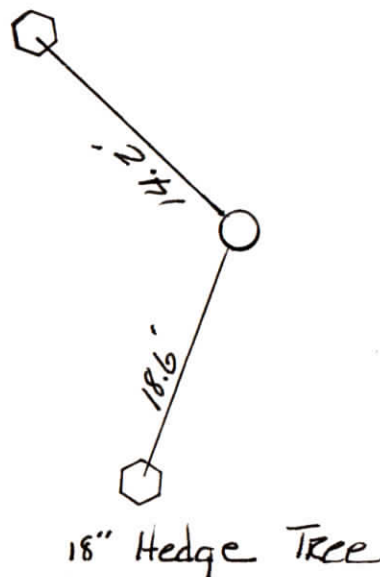
WARRICK COUNTY SURVEYOR
MICHAEL IRVIN



INDICATE CORNER REFERENCED



DESCRIBE CORNER REFERENCED



STATE PLANE COORDINATE DATA

INDIANA ZONE: WEST

X _____

Y _____

ESTABLISHED BY:

APPROVED BY

DATE

REFERENCED BY:

DATE

Elmo D. Dockery

oct 27 1991

CORNER RECORD
WARRICK COUNTY



DESCRIPTION:

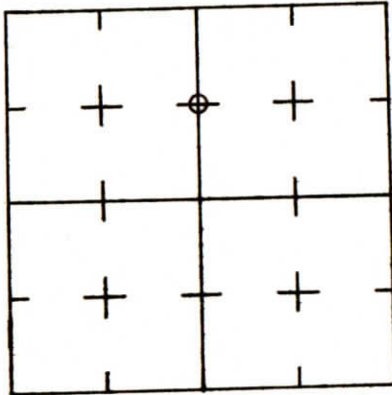
SE CORNER NE¹/₄ NW¹/₄

SECTION 22, T. 6 S. R. 9 W.

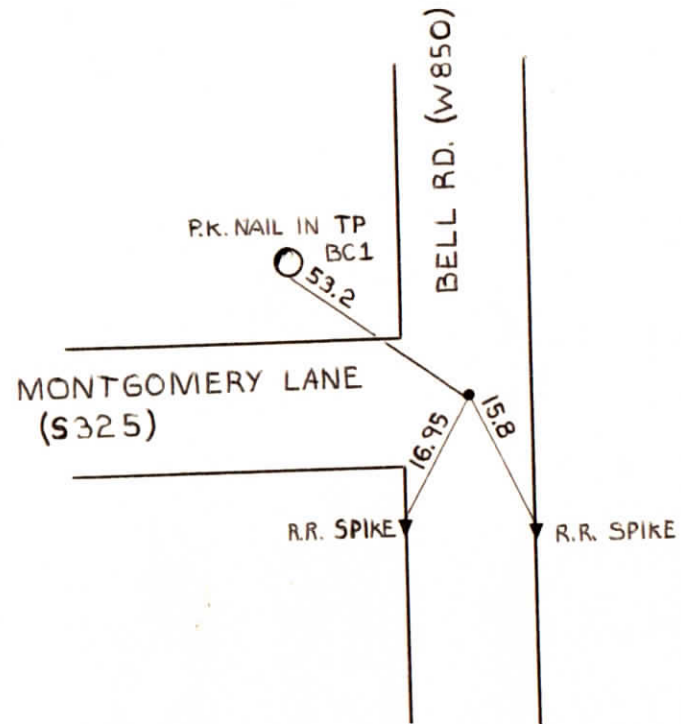
2nd PRINCIPLE MERIDIAN

WARRICK COUNTY SURVEYOR
MICHAEL IRVIN

INDICATE CORNER REFERENCED



DESCRIBE CORNER REFERENCED



STATE PLANE COORDINATE DATA

INDIANA ZONE: WEST

X _____

Y _____

ESTABLISHED BY:

APPROVED BY *NOT VERIFIED*

DATE
8/20/73

REFERENCED BY:

DATE


000057

SE cor $NE\frac{1}{4}$ $NW\frac{1}{4}$ sec 22+65R9W

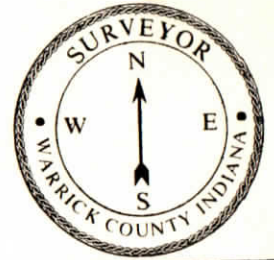
Type of Monument: I.P.

Date referenced: 8/20/73

referenced by: SWC



CORNER RECORD
WARRICK COUNTY



DESCRIPTION :

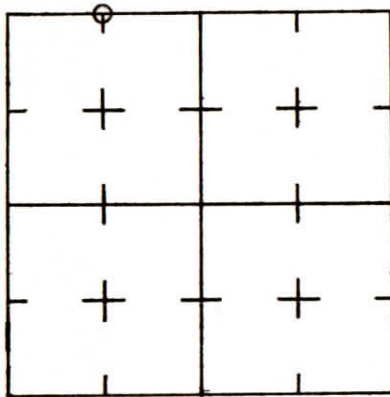
NE CORNER NW¹/₄ NW¹/₄

SECTION 22, T. 6 S. R. 9 W.

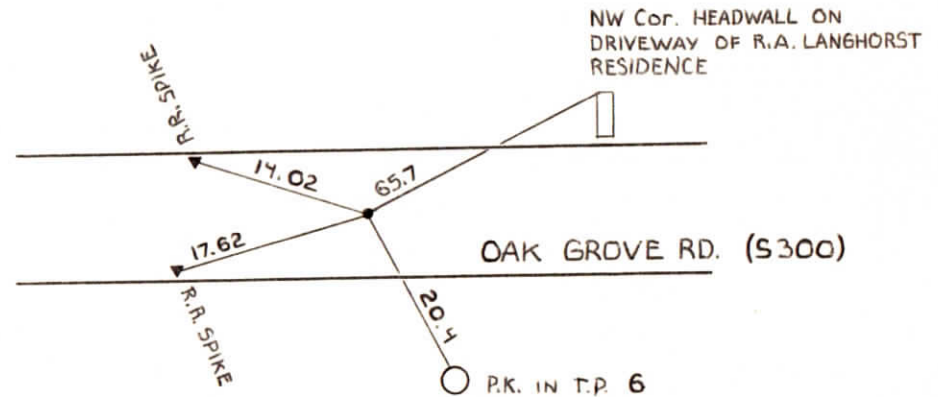
2nd PRINCIPLE MERIDIAN

WARRICK COUNTY SURVEYOR
MICHAEL IRVIN

INDICATE CORNER REFERENCED



DESCRIBE CORNER REFERENCED



STATE PLANE COORDINATE DATA

INDIANA ZONE: WEST

X _____

Y _____

ESTABLISHED BY:

APPROVED BY NOT VERIFIED

DATE
8/20/73

REFERENCED BY:

DATE

00024

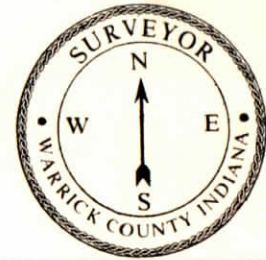
NE cor NW $\frac{1}{4}$ NW $\frac{1}{4}$ sec 22T6SR9W
SE cor SW $\frac{1}{4}$ SW $\frac{1}{4}$ sec 15T6SR9W

Type Monument: I.P.

date referenced: 8/20/73

referenced by: SWL ✓

CORNER RECORD
WARRICK COUNTY



DESCRIPTION :

SE CORNER NW¹/₄

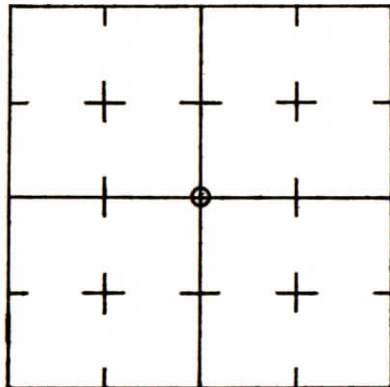
SECTION 22, T. 6 S. R. 9 W.

2nd PRINCIPLE MERIDIAN

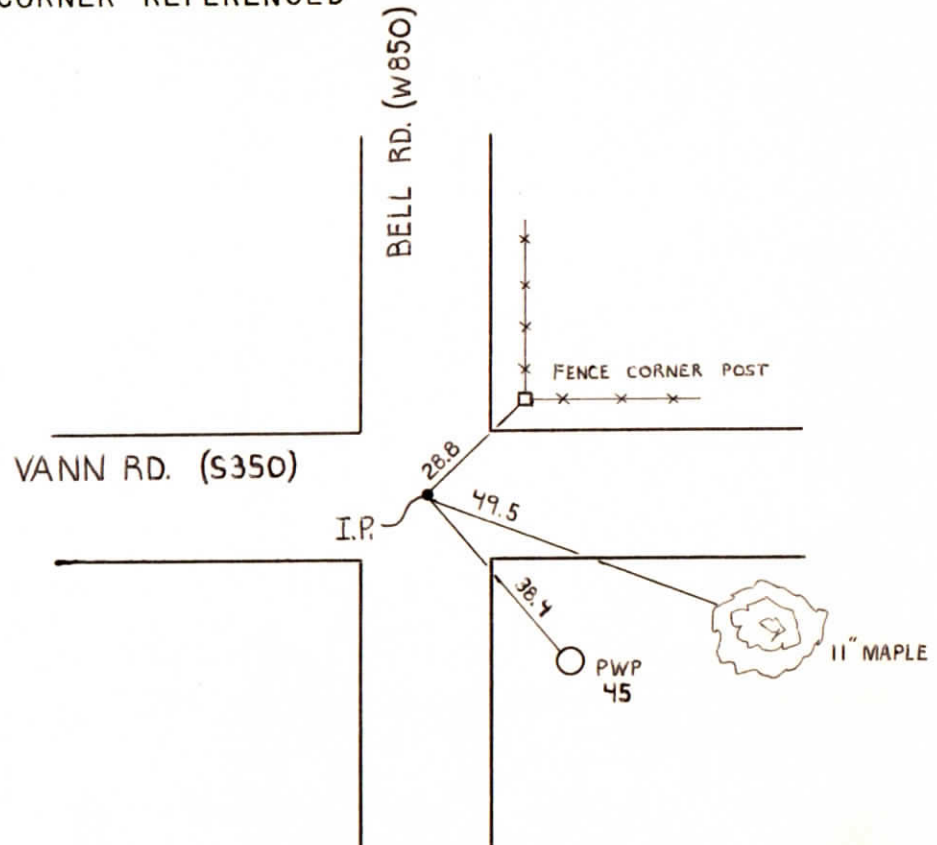
WARRICK COUNTY SURVEYOR

MICHAEL IRVIN

INDICATE CORNER REFERENCED



DESCRIBE CORNER REFERENCED



STATE PLANE COORDINATE DATA

INDIANA ZONE: WEST

X _____

Y _____

ESTABLISHED BY:

APPROVED BY *NOT VERIFIED*

DATE
5-21-73

REFERENCED BY:

DATE

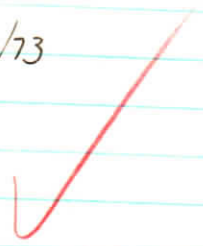
~~(SE corner of the NW 1/4 + SW corner of the NE 1/4~~
+ the NE corner of the SW 1/4 + the NW corner of the
SE 1/4 section 22-65-9w.

~~000017~~

Type of Monument: I. P. (existing)

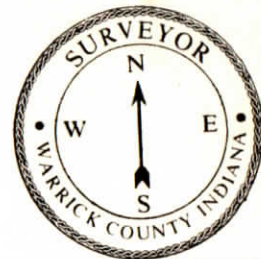
Date referenced: 5/21/73

referenced by: SWC



7-2-79
gpt

CORNER RECORD
WARRICK COUNTY



DESCRIPTION:

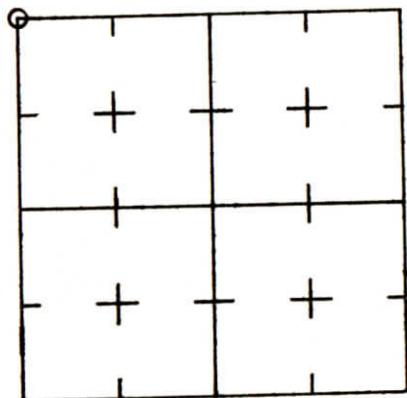
NW CORNER NW 1/4

SECTION 22, T. 6 S. R. 9 W.

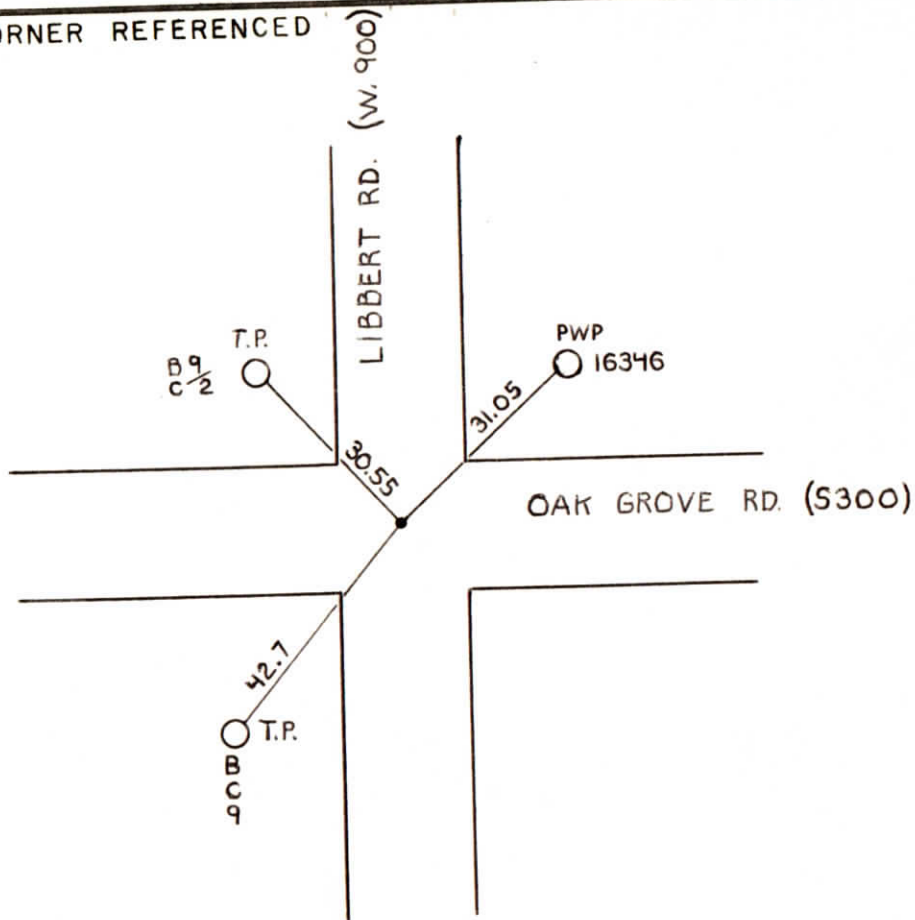
2nd PRINCIPLE MERIDIAN

WARRICK COUNTY SURVEYOR
MICHAEL IRVIN

INDICATE CORNER REFERENCED



DESCRIBE CORNER REFERENCED



STATE PLANE COORDINATE DATA

INDIANA ZONE: WEST

X _____

Y _____

ESTABLISHED BY:

APPROVED BY

NOT VERIFIED

DATE
6/6/73

REFERENCED BY:

DATE

~~000023~~

NW corner sec. 22-65-9W

NE corner sec. 21-65-9W

SE corner sec. 16-65-9W

SW corner sec. 15-65-9W

Type of Monument: I.P. (existing)

Date referenced: 6/6/73

referenced by: SWC

7'-74
6'-92
✓

CORNER RECORD
WARRICK COUNTY



DESCRIPTION:

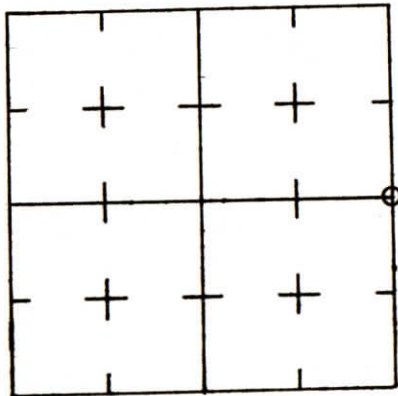
NE CORNER SE 1/4

SECTION 22, T. 6 S. R. 9 W.

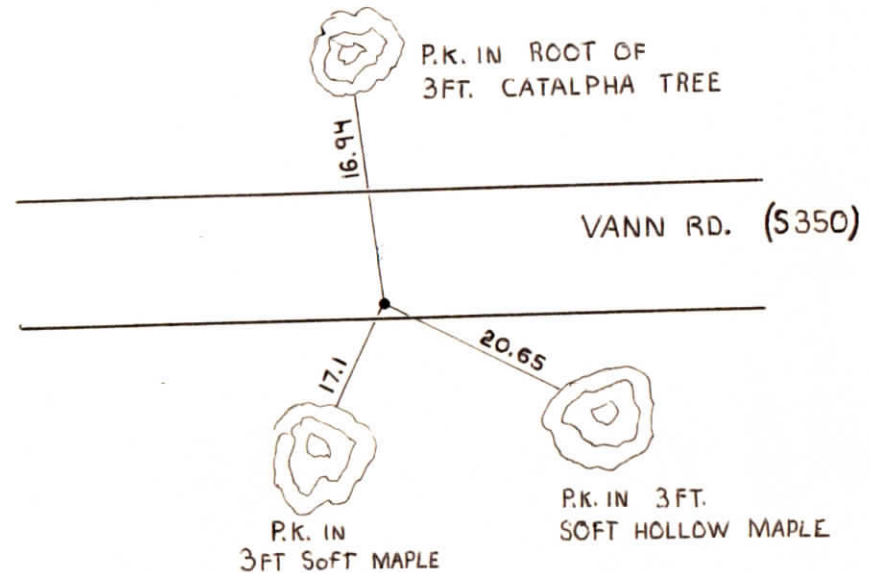
2nd PRINCIPLE MERIDIAN

WARRICK COUNTY SURVEYOR
MICHAEL IRVIN

INDICATE CORNER REFERENCED



DESCRIBE CORNER REFERENCED



STATE PLANE COORDINATE DATA

INDIANA ZONE: WEST

X _____

Y _____

ESTABLISHED BY:

APPROVED BY

NOT VERIFIED

DATE
8/20/13

REFERENCED BY:

DATE

NE COR SE 1/4

~~000056~~

~~NE cor SW 1/4~~ sec 22 T65R9W
SW cor NW 1/4 sec 23 T65R9W

Type Monument: I.P. (existing)

Date referenced: 8/20/73

referenced by: SWC

7/29/74
JPT

✓

**CORNER RECORD
WARRICK COUNTY**



DESCRIPTION :

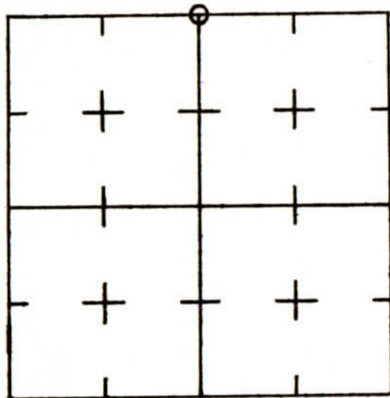
NE CORNER NW¹/₄

SECTION 22, T. 6 S. R. 9 W.

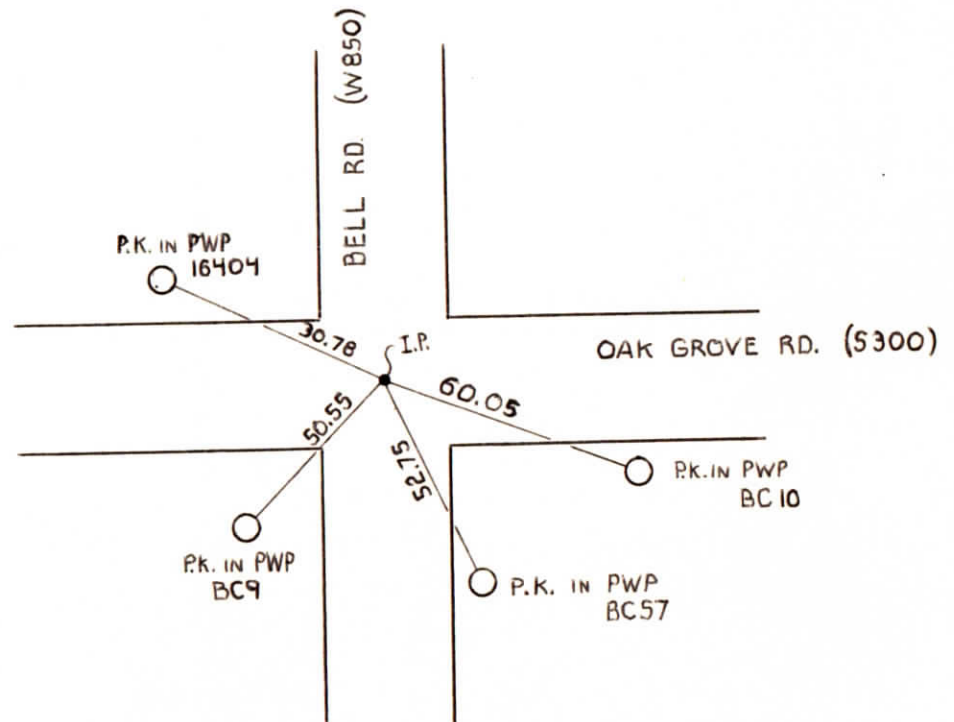
2nd PRINCIPLE MERIDIAN

**WARRICK COUNTY SURVEYOR
MICHAEL IRVIN**

INDICATE CORNER REFERENCED



DESCRIBE CORNER REFERENCED



STATE PLANE COORDINATE DATA

INDIANA ZONE: WEST

X _____

Y _____

ESTABLISHED BY:

APPROVED BY *NOT VERIFIED*

DATE
8/20/73

REFERENCED BY:

DATE

~~000022~~

(NE cor NW $\frac{1}{4}$) + NW cor NE $\frac{1}{4}$ sec 22 T6S R9W
SE cor SW $\frac{1}{4}$ + SW cor SE $\frac{1}{4}$ sec 15 T6S R9W

Type of Monument: I.P. (existing)

Date referenced: 8/20/73

referenced by: SWC

6-26-79
990