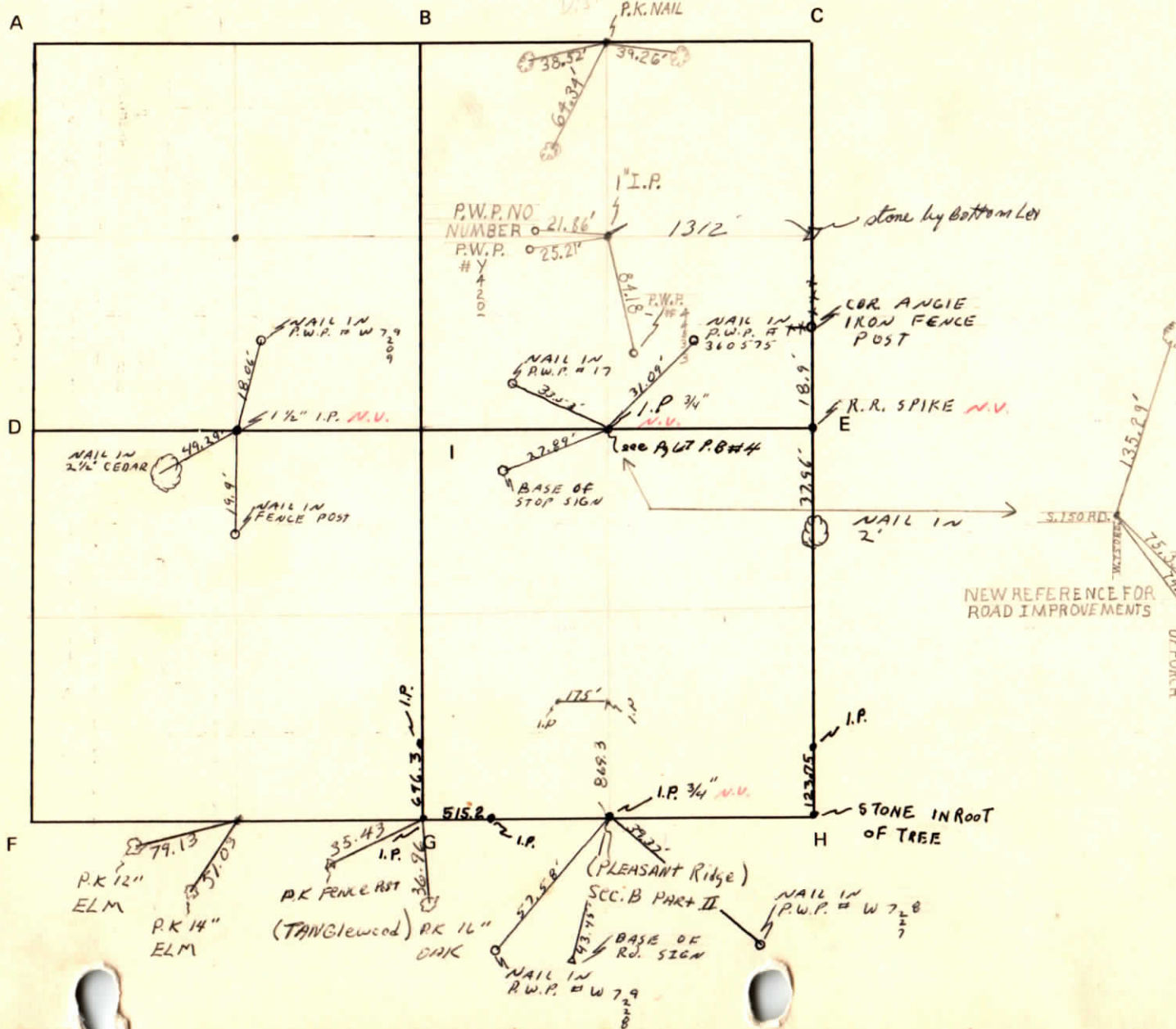
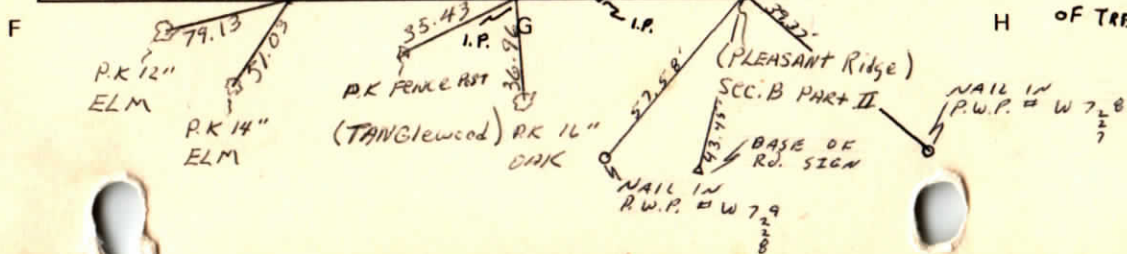
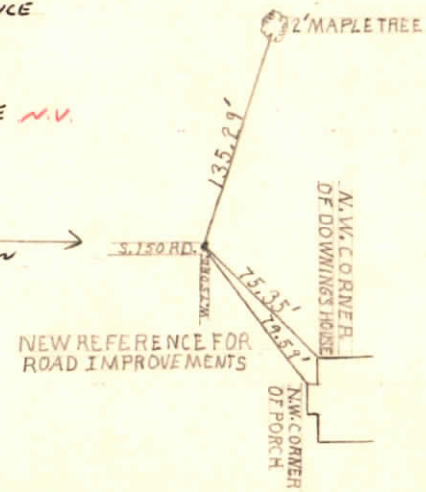


CORNER CODE SYSTEM
Warrick County



NOTES



RECORD OF SECTION CORNERS

Warrick County

Section 11 Township 6south Range 9west 2nd Principle Meridian

Date	Cor	Description of		Distance from Corner	Azimuth from Corner (North Assumed)	Cond	Check By	Remarks
		Monument	Reference					
2/1/49	A	Iron PIN						SW cor. SE1/4- SE1/4 SWC G. C. Reynolds
	B							
	C							
	D							
	E							
	F							
	G							
	H							
	I		Stone in ROOT OF HICKORY TREE					

CORNER RECORD
WARRICK COUNTY

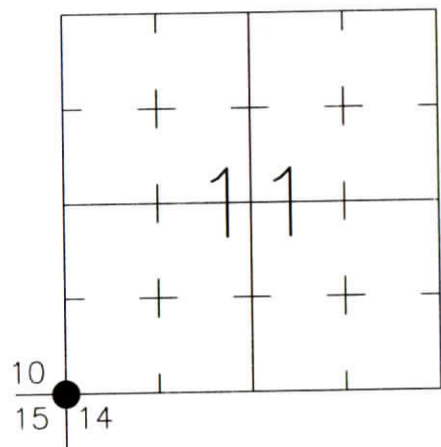


DESCRIPTION:
SOUTHWEST CORNER _____
SECTION 11, T. 6 S., R. 9 W.
2nd PRINCIPAL MERIDIAN

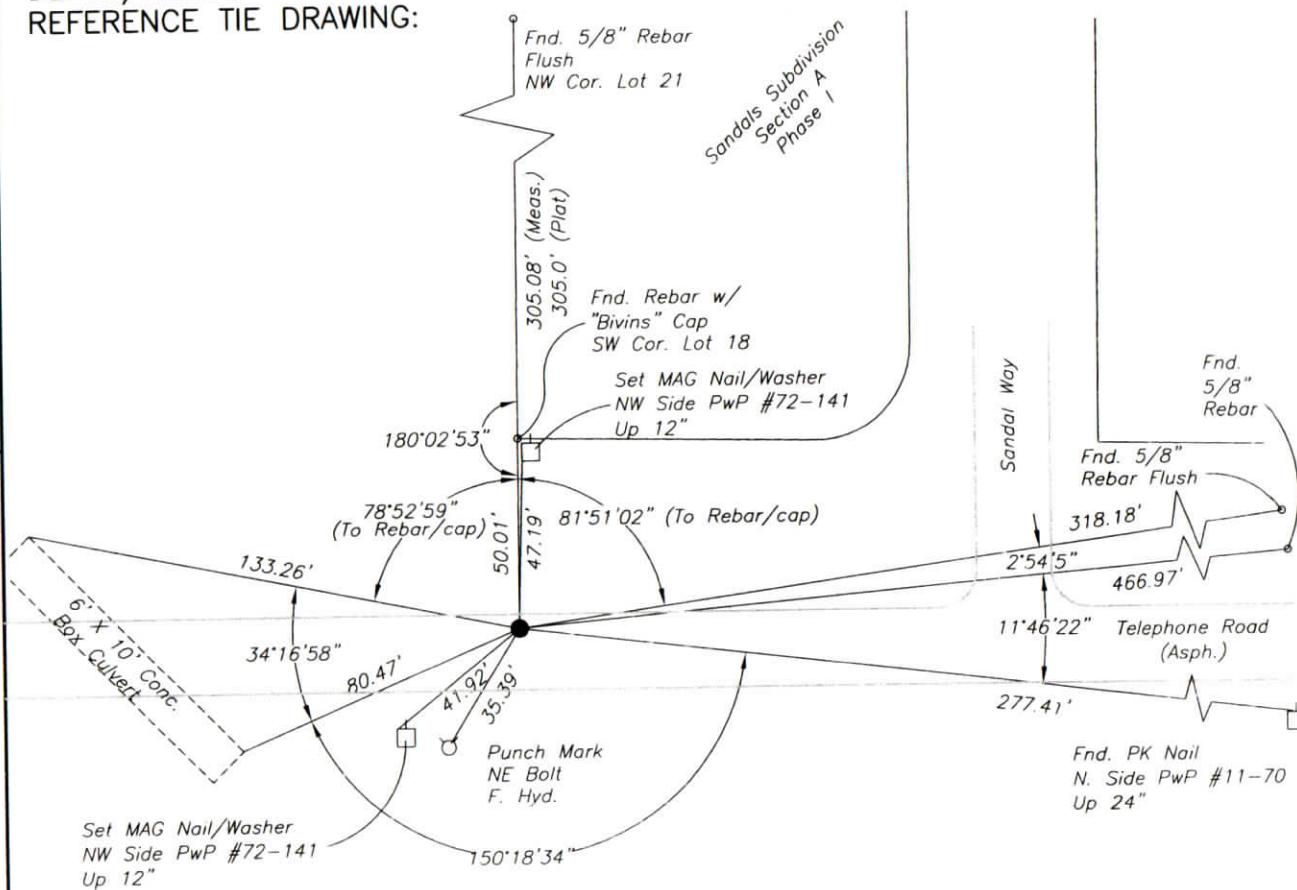
WARRICK COUNTY SURVEYOR
KARAN HARGRAVE-BARNHILL

FOR NOTES ON CORNER HISTORY SEE REVERSE.

INDICATE CORNER REFERENCED:



MONUMENT TYPE: RAILROAD SPIKE (PUNCHED)
SIZE:
DEPTH/HEIGHT: 2" BELOW GRADE
REFERENCE TIE DRAWING:



STATE PLANE COORDINATE DATA:
INDIANA WEST ZONE, NAD 83 (1997)
U.S. SURVEY FEET

X _____

Y _____

COORDINATES ESTABLISHED BY:

APPROVED BY:

DATE:

REFERENCED BY: D.DREES/G.M.BURRESS

DATE: 9/9/02

APPROVED BY: P.JONES, RLS#9600016

DATE: 9/23/02

CORNER FILE CODE:
T6S-R9W-J-17

CORNER HISTORY:

CORNER FILE CODE:
T6S-R9W-J-17

ORIGINAL USPLS SURVEY: Corner established by Jacob Fowler, Dec., 1805 (missing notes).

COUNTY SURVEYOR'S BOOKS: Book 1 P. 54: W.B. Wright WCS Sept. 1, 1855 "Stone"

OTHER SURVEYS AND PLATS: No Co. Surv. references, no recorded surveys/subdivisions found.

RR Spike found and tied in to Telephone Road Route Survey (Bernardin-Lochmueller & Assoc.) 2002.

The plat of Sandals Subdivision Sec. A Ph. I (Doc. 2002R-005568) shows ties to the corner (monument not identified).

VERIFICATION OF CORNER POSITION: September, 2002: The railroad spike shown was found in place. Its position relative to lot corners along the west side of Sandals Subdivision Sec. A Ph. I was consistent with plat dimensions, as shown.

Perry E. Jones 9/9/02

CORNER RECORD WARRICK COUNTY

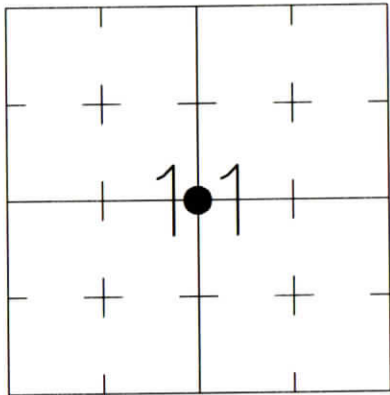


DESCRIPTION:
 SOUTHWEST CORNER NORTHEAST QUARTER
 SECTION 11, T. 6 S., R. 9 W.
 2nd PRINCIPLE MERIDIAN

WARRICK COUNTY SURVEYOR
 KARAN HARGRAVE-BARNHILL

FOR NOTES ON CORNER HISTORY SEE REVERSE.

INDICATE CORNER REFERENCED:



MONUMENT TYPE: REBAR
 SIZE: 1/2" DIA.
 DEPTH/HEIGHT: 2" BELOW GRADE
 REFERENCE TIE DRAWING:

STATE PLANE COORDINATE DATA:
 INDIANA WEST ZONE, NAD 83 (1997)
 U.S. SURVEY FEET

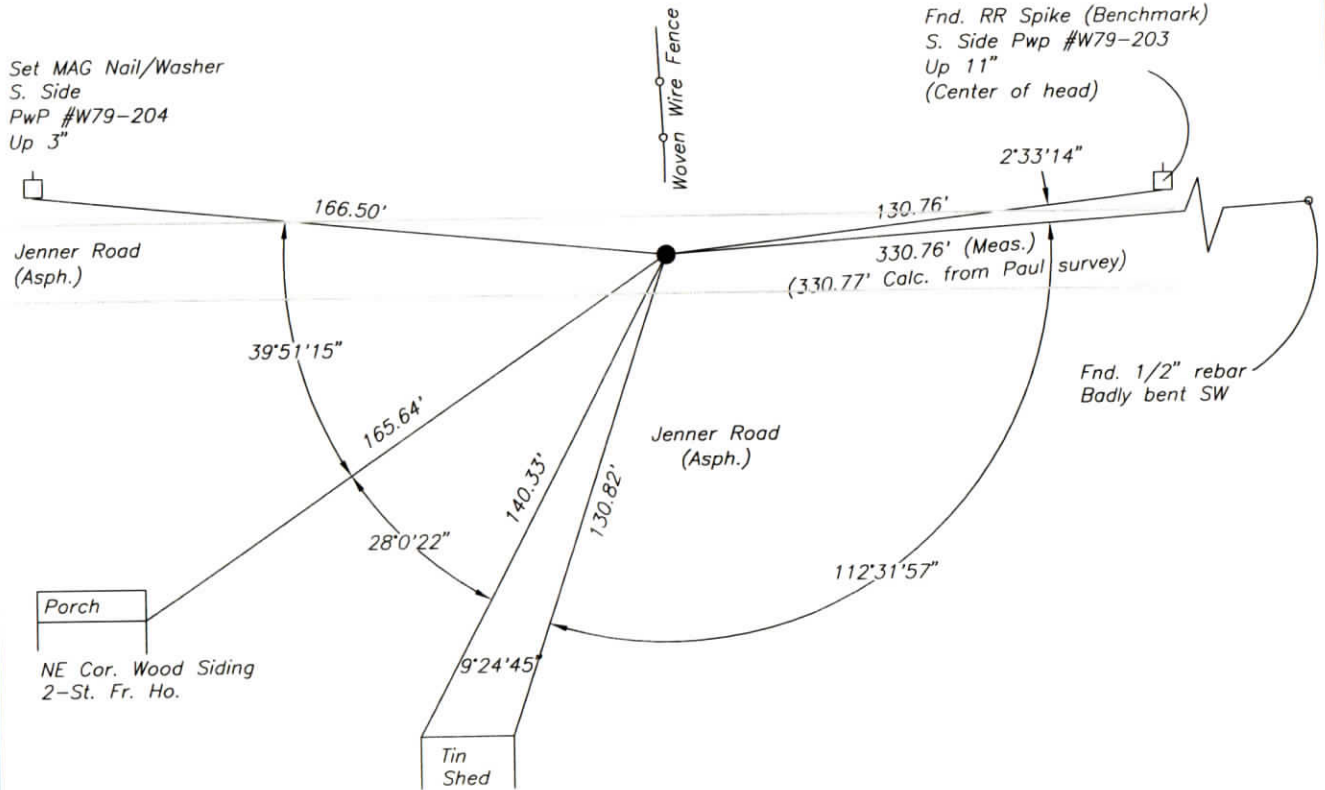
X _____

Y _____

COORDINATES ESTABLISHED BY:

APPROVED BY:

DATE:



REFERENCED BY: D.DREES/M.BRENDEL

DATE: 9/16/02

APPROVED BY: P.JONES, RLS#9600016

DATE: 9/24/02

CORNER FILE CODE:
 T6S-R9W-G-19

CORNER HISTORY:

CORNER FILE CODE:
T6S-R9W-G-19

ORIGINAL USPLS SURVEY: (Center of Section not monumented by USPLS Survey)

COUNTY SURVEYOR'S BOOKS: Book 1 P. 54: W.B. Wright WCS Sept. 1, 1855 Stone"

Book 2 P. 75: William Meyer WCS March 4, 1891 (Survey of E-W Road) "Said highway was formerly surveyed by Pasco. I found the center corner of Section 11 too far north about 4 feet."

OTHER SURVEYS AND PLATS: 1/2" Rebar shown on Exempt Div. by Alvin Paul dated 1986.

1/2" Rebar 2" deep shown on Exempt Division by R. Young dated 1994.

RR Spike shown on Minor Subdivision by R. Young (Doc. 2001R-001576).

VERIFICATION OF CORNER POSITION: September, 2002: The 1/2" rebar shown was found in place. The measured distance to a rebar found on the east line of the Alvin Paul Exempt Division described above conformed well with the plat dimension.

Perry E. Jones 9/24/02

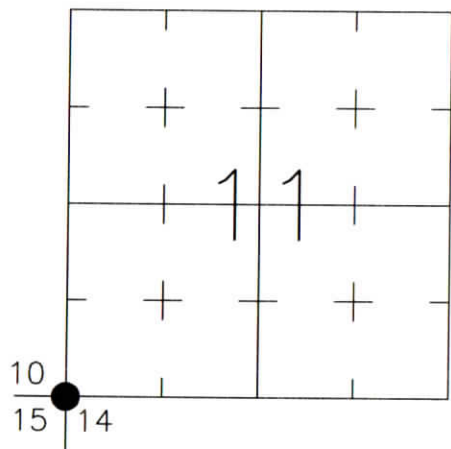
CORNER RECORD
WARRICK COUNTY



DESCRIPTION:
SOUTHWEST CORNER _____
SECTION 11, T. 6 S., R. 9 W.
2nd PRINCIPLE MERIDIAN

WARRICK COUNTY SURVEYOR
KARAN HARGRAVE-BARNHILL

INDICATE CORNER REFERENCED:



MONUMENT TYPE: RAILROAD SPIKE (PUNCHED)
SIZE:
DEPTH/HEIGHT: 2" BELOW GRADE
REFERENCE TIE DRAWING:

FOR NOTES ON CORNER HISTORY SEE REVERSE.

STATE PLANE COORDINATE DATA:
INDIANA WEST ZONE, NAD 83 (1997)
U.S. SURVEY FEET

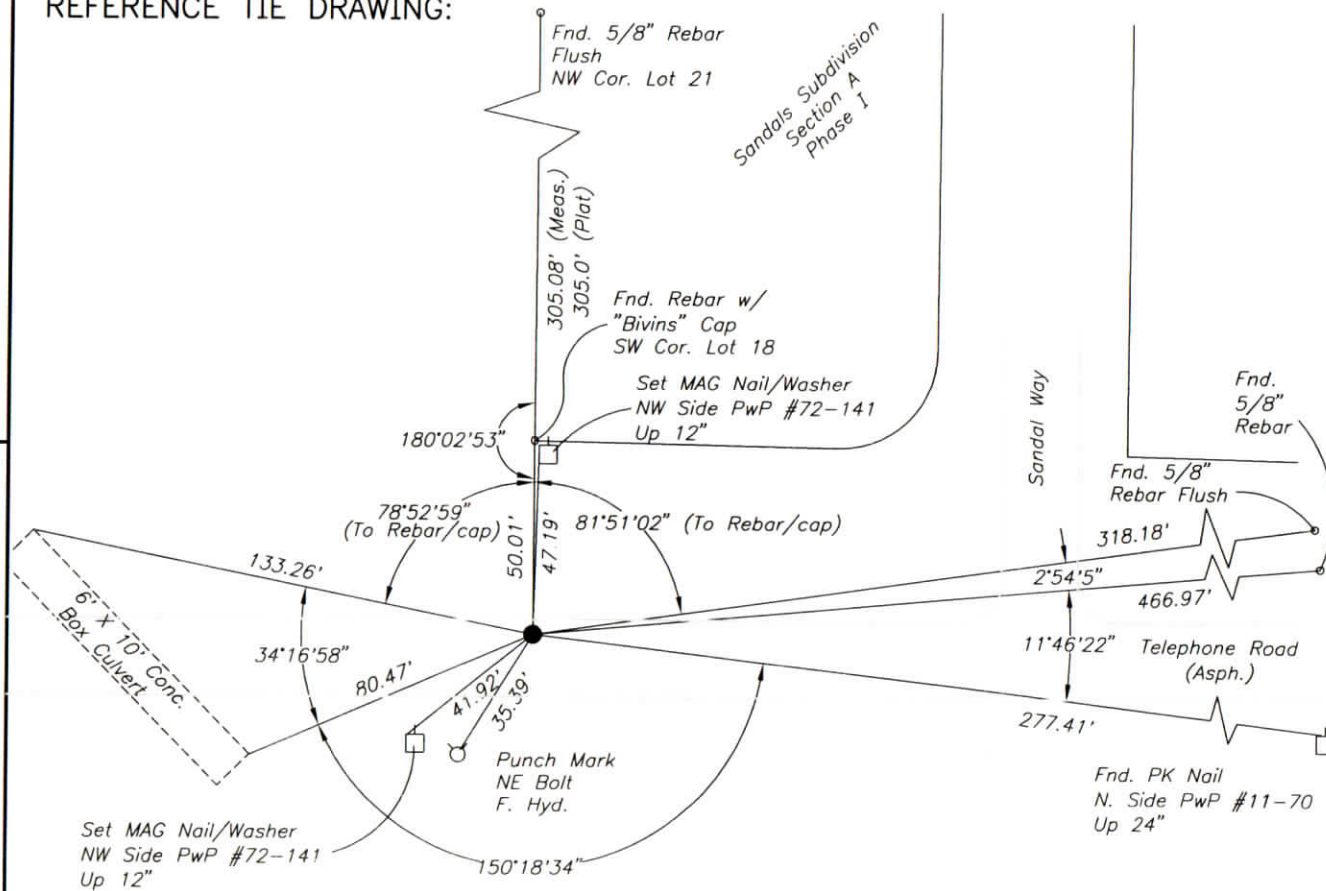
X _____

Y _____

COORDINATES ESTABLISHED BY:

APPROVED BY:

DATE:



REFERENCED BY: D.DREES/G.M.BURRESS

DATE: 9/9/02

APPROVED BY: P.JONES, RLS#9600016

DATE: 9/23/02

CORNER FILE CODE:
T6S-R9W-J-17

CORNER HISTORY:

CORNER FILE CODE:
T6S-R9W-J-17

ORIGINAL USPLS SURVEY: Corner established by Jacob Fowler, Dec., 1805 (missing notes).

COUNTY SURVEYOR'S BOOKS: Book 1 P. 54: W.B. Wright WCS Sept. 1, 1855 "Stone"

OTHER SURVEYS AND PLATS: No Co. Surv. references, no recorded surveys/subdivisions found.

RR Spike found and tied in to Telephone Road Route Survey (Bernardin-Lochmueller & Assoc.) 2002.

The plat of Sandals Subdivision Sec. A Ph. I (Doc. 2002R-005568) shows ties to the corner (monument not identified).

VERIFICATION OF CORNER POSITION: September, 2002: The railroad spike shown was found in place. Its position relative to lot corners along the west side of Sandals Subdivision Sec. A Ph. I was consistent with plat dimensions, as shown.

Perry E. Jones 9/9/02

CORNER RECORD WARRICK COUNTY

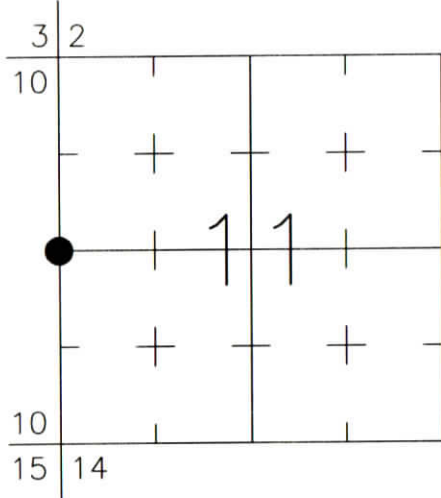


DESCRIPTION:
SOUTHWEST CORNER NORTHWEST QUARTER
SECTION 11, T. 6 S., R. 9 W.
 2nd PRINCIPLE MERIDIAN

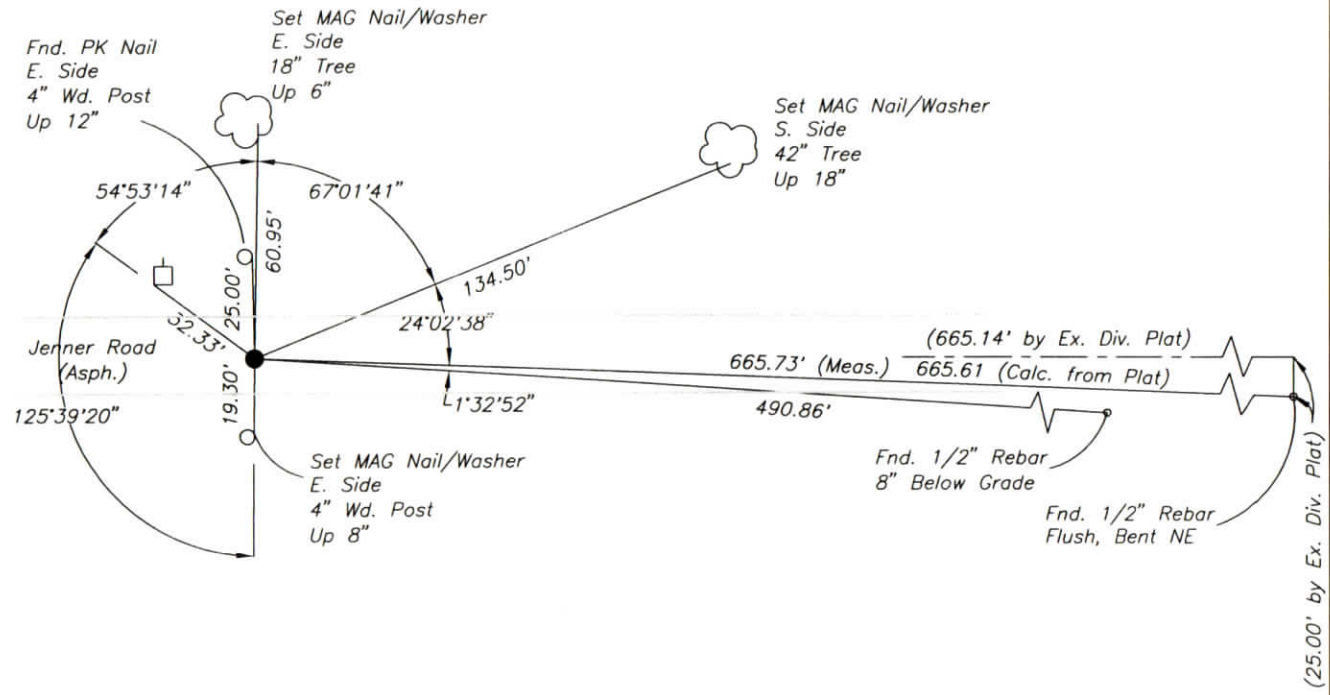
WARRICK COUNTY SURVEYOR
 KARAN HARGRAVE-BARNHILL

FOR NOTES ON CORNER HISTORY SEE REVERSE.

INDICATE CORNER REFERENCED:



MONUMENT TYPE: RAILROAD SPIKE
 SIZE:
 DEPTH/HEIGHT: " BELOW GRADE
 REFERENCE TIE DRAWING:



STATE PLANE COORDINATE DATA:
 INDIANA WEST ZONE, NAD 83 (1997)
 U.S. SURVEY FEET

X _____
 Y _____

COORDINATES ESTABLISHED BY:

APPROVED BY:

DATE:

REFERENCED BY: D.DREES/M.BRENDEL

APPROVED BY: P.JONES, RLS#9600016

DATE: 9/16/02

DATE: 9/24/02

CORNER FILE CODE:
 T6S-R9W-G-17

CORNER HISTORY:

ORIGINAL USPLS SURVEY: Corner established by Jacob Fowler, Dec. 23, 1805 "Post".

COUNTY SURVEYOR'S BOOKS: Book 1 P. 54: W.B. Wright WCS Sept. 1, 1855 "Stone"

OTHER SURVEYS AND PLATS: RR Spike 6" below grade shown on Exempt Division dated 1991 (incomplete copy).

A 1" Iron Pin is shown and referenced on an Exempt Div. for Wilburn M. and Yvonne Lemmons dated _____ (incomplete copy).

VERIFICATION OF CORNER POSITION: September, 2002: The railroad spike shown was found in place. Its position was consistent with reference ties shown on the Exempt Division plat for Wilburn & Yvonne Williams described above. Two 1/2" rebars were found marking the south boundary of Jenner Road and tied in. The distance to one of the rebars matched plat dimensions within 0.12' (the two rebars were not consistent in their northing positions).

Perry E. Jones 9/24/02

CORNER RECORD WARRICK COUNTY

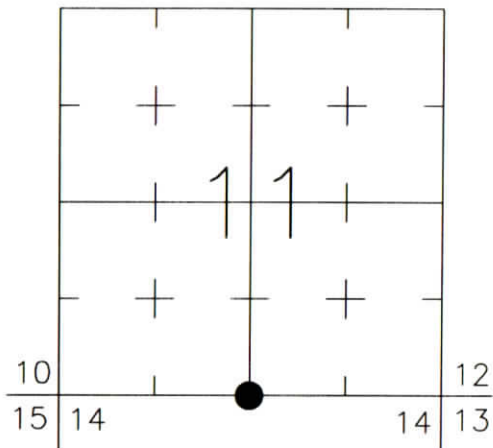


DESCRIPTION:
 SOUTHWEST CORNER SOUTHEAST QUARTER
 SECTION 11, T. 6 S., R. 9 W.
 2nd PRINCIPLE MERIDIAN

WARRICK COUNTY SURVEYOR
 KARAN HARGRAVE-BARNHILL

FOR NOTES ON CORNER HISTORY SEE REVERSE.

INDICATE CORNER REFERENCED:



MONUMENT TYPE: IRON PIPE
 SIZE: 1-1/4" O.D.
 DEPTH/HEIGHT: 6" BELOW GRADE
 REFERENCE TIE DRAWING:

STATE PLANE COORDINATE DATA:
 INDIANA WEST ZONE, NAD 83 (1997)
 U.S. SURVEY FEET

X _____
 Y _____

COORDINATES ESTABLISHED BY:

APPROVED BY:

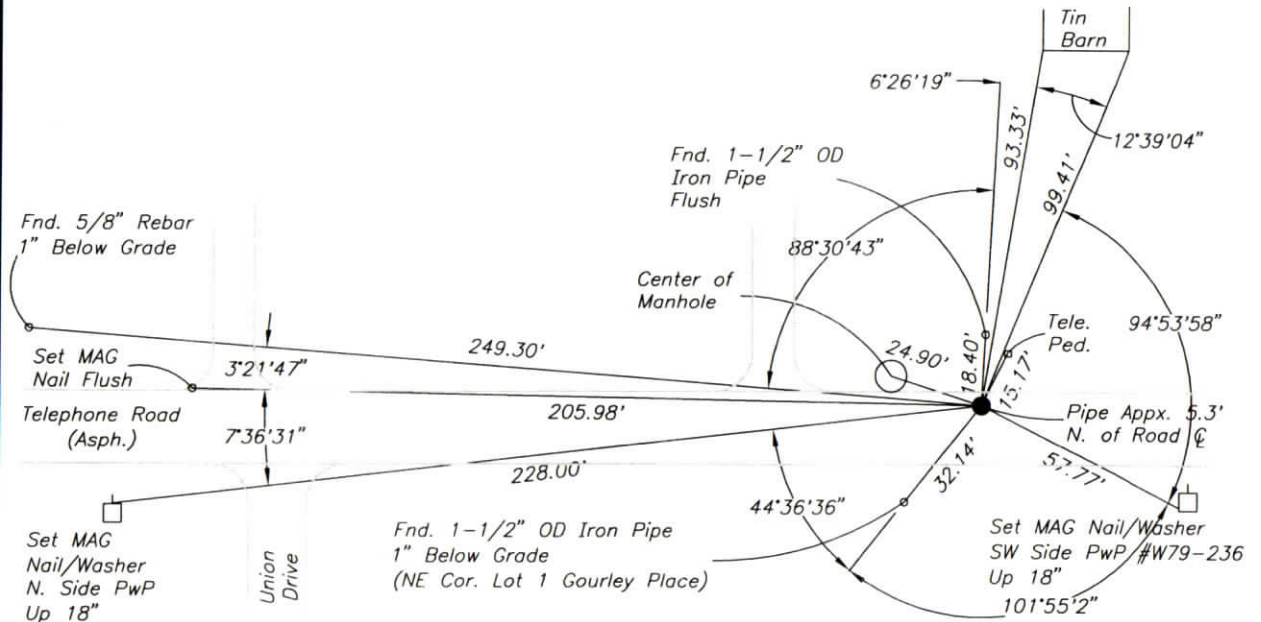
DATE:

REFERENCED BY: D.DREES/G.M.BURRESS DATE: 9/9/02

APPROVED BY: P.JONES, RLS#9600016

DATE: 10/3/02

CORNER FILE CODE:
 T6S-R9W-J-19



CORNER HISTORY:

ORIGINAL USPLS SURVEY: Corner established by Jacob Fowler, Dec., 1805 (missing notes).

COUNTY SURVEYOR'S BOOKS: Book 1 P. 21: Isaac Adams WCS Dec. 7, 1853 (Mon. not identified).

Book 1 P. 54: W.B. Wright WCS Sept. 1, 1855 "Stone"

OTHER SURVEYS AND PLATS: The plat of Gourley Place Part One ties to the corner (monument not identified).

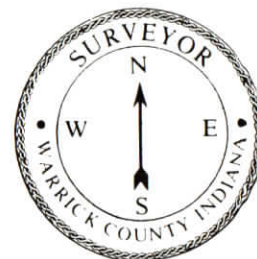
A 1" I. Pin in place is shown on the 1976 plat of Gourley Place Part Four.

The 1976 plat of Tanglewood Section "A" includes ties to the corner (monument not identified).

VERIFICATION OF CORNER POSITION: September, 2002: The iron pipe shown was found in place, its distance to a pipe marking the northeast corner of Lot 1 of Gourley Place Part One matched plat dimensions within 0.1 foot.

Perry E. Jones 10/3/02

CORNER RECORD
WARRICK COUNTY



DESCRIPTION:

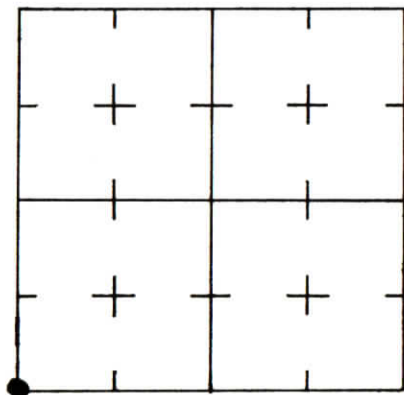
SW CORNER SW¹/₄ SW¹/₄

SECTION 11, T. 6 S. R. 9 W.

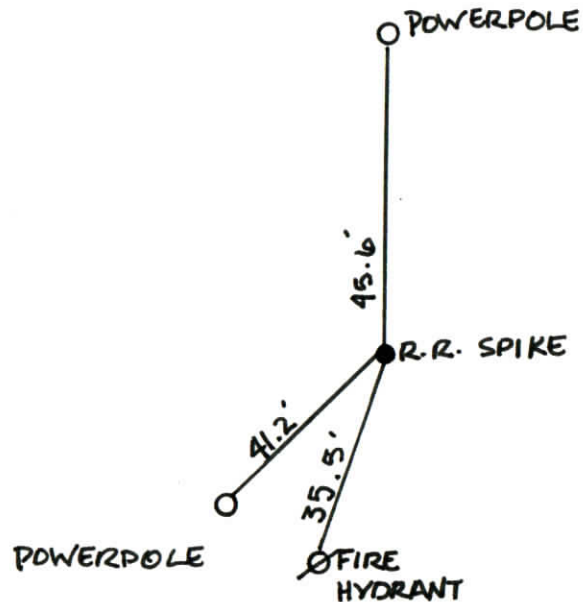
2nd PRINCIPLE MERIDIAN

WARRICK COUNTY SURVEYOR
KARAN HARGRAVE-BARNHILL

INDICATE CORNER REFERENCED



DESCRIBE CORNER REFERENCED



STATE PLANE COORDINATE DATA

INDIANA ZONE: WEST

X _____

Y _____

ESTABLISHED BY:

APPROVED BY

DATE

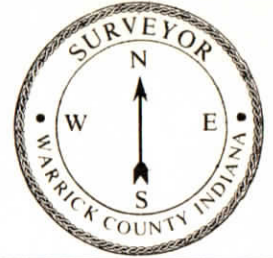
REFERENCED BY:

DATE

WILLIAM Y. BIVINS

12-27-02

CORNER RECORD
WARRICK COUNTY



DESCRIPTION :

SW CORNER SE 1/4 SW 1/4

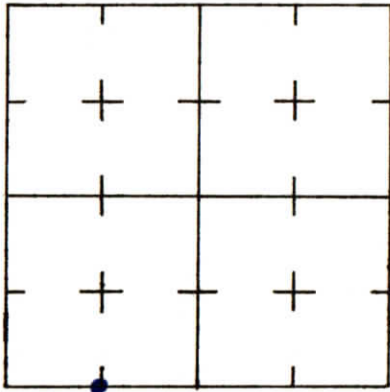
SECTION 11, T. 6 S. R. 9 W.

2nd PRINCIPLE MERIDIAN

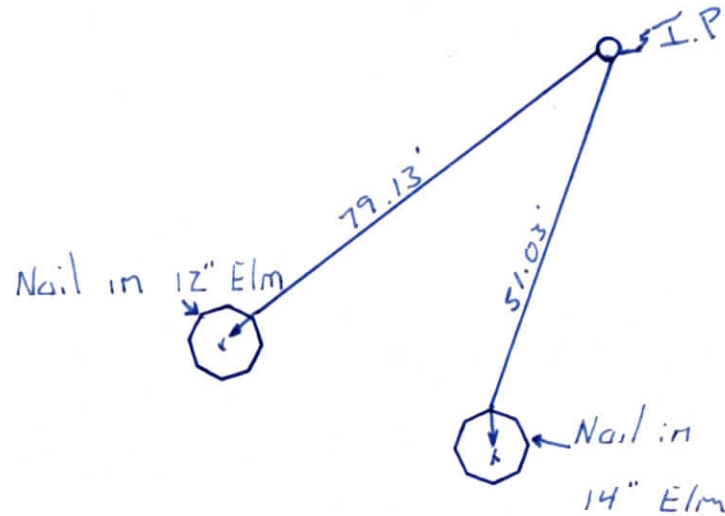
Tanglewood Section 'c'

WARRICK COUNTY SURVEYOR
MICHAEL IRVIN

INDICATE CORNER REFERENCED



DESCRIBE CORNER REFERENCED



STATE PLANE COORDINATE DATA

INDIANA ZONE: WEST

X _____

Y _____

ESTABLISHED BY:

APPROVED BY

DATE

REFERENCED BY:

DATE

Sam Biggerstaff

Oct. 12, 1983

CORNER RECORD
WARRICK COUNTY



DESCRIPTION :

SE CORNER SE 1/4 SW 1/4

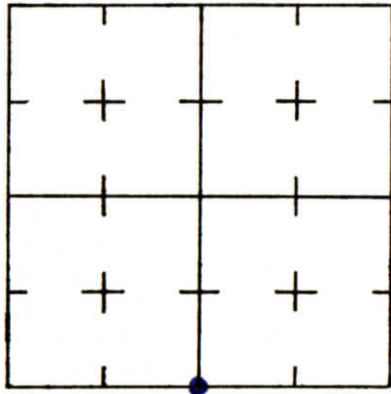
SECTION 11, T. 6 S. R. 9 W.

2nd PRINCIPLE MERIDIAN

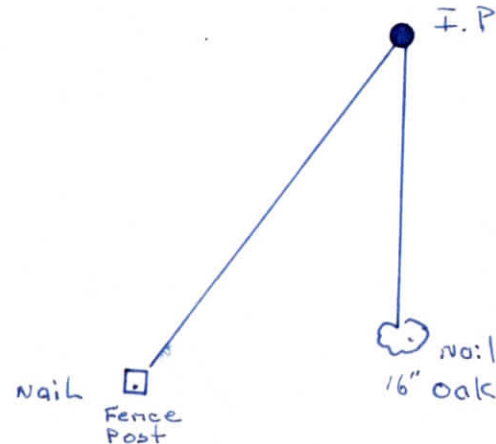
Tangle Wood Sec. "A"

WARRICK COUNTY SURVEYOR
MICHAEL IRVIN

INDICATE CORNER REFERENCED



DESCRIBE CORNER REFERENCED



STATE PLANE COORDINATE DATA

INDIANA ZONE: WEST

X _____

Y _____

ESTABLISHED BY:

APPROVED BY

DATE

REFERENCED BY:

DATE

Carl J. Hansert

April 14, 1976

CORNER RECORD
WARRICK COUNTY



DESCRIPTION:

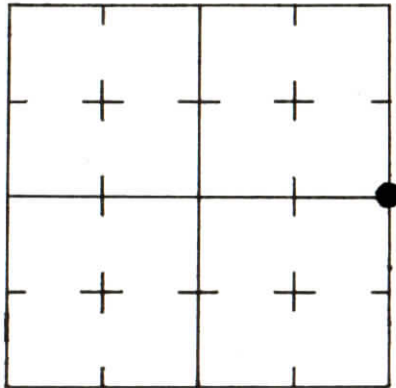
SE CORNER SE 1/4 NE 1/4

SECTION 11, T. 6 S. R. 9 W.

2nd PRINCIPLE MERIDIAN

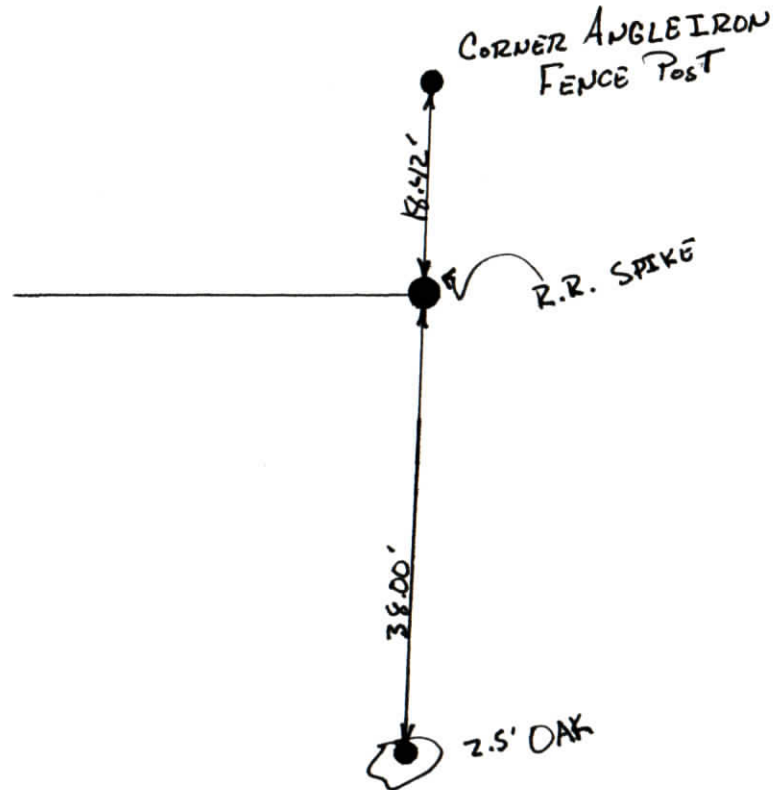
WARRICK COUNTY SURVEYOR
KARAN HARGRAVE-BARNHILL

INDICATE CORNER REFERENCED



DESCRIBE CORNER REFERENCED

M EADOWVIEW E STATES



STATE PLANE COORDINATE DATA

INDIANA ZONE: WEST

X _____

Y _____

ESTABLISHED BY:

APPROVED BY

DATE

REFERENCED BY:

DATE

MICHAEL F. FELDBUSCH

12-6-94

CORNER RECORD
WARRICK COUNTY

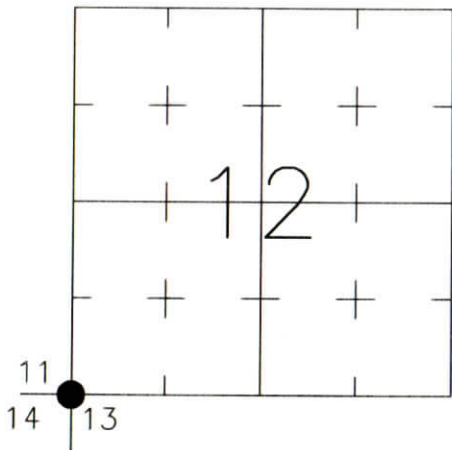


DESCRIPTION:

SOUTHWEST CORNER _____
SECTION 12, T. 6 S., R. 9 W.
2nd PRINCIPAL MERIDIAN

WARRICK COUNTY SURVEYOR
KARAN HARGRAVE-BARNHILL

INDICATE CORNER REFERENCED:



MONUMENT TYPE: CALC. POS. UNDER 30" HICK. FOR NOTES ON CORNER HISTORY SEE REVERSE.
SIZE:
DEPTH/HEIGHT:
REFERENCE TIE DRAWING:

STATE PLANE COORDINATE DATA:
INDIANA WEST ZONE, NAD 83 (1997)
U.S. SURVEY FEET

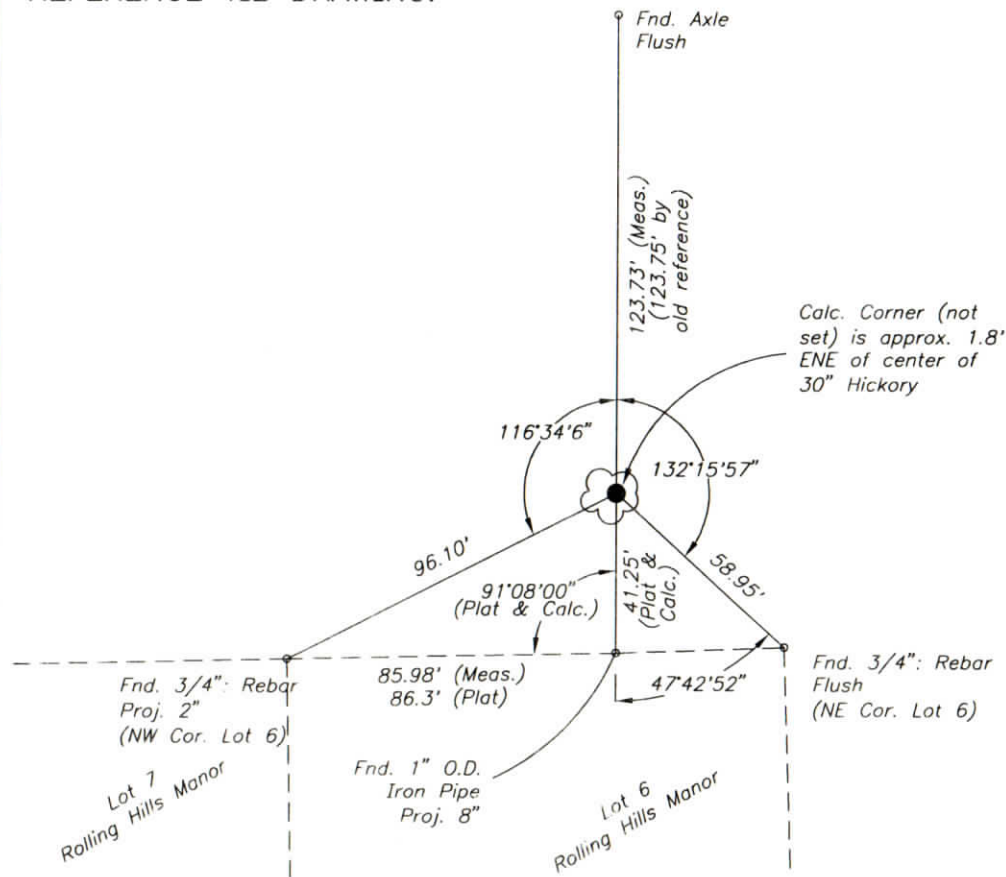
X _____

Y _____

COORDINATES ESTABLISHED BY:

APPROVED BY:

DATE:



REFERENCED BY: R.HAHN/E.INGRAM

DATE: 3/7/03

APPROVED BY: P.JONES, RLS#9600016

DATE: 3/17/03

CORNER FILE CODE:
T6S-R9W-J-21

CORNER HISTORY:

CORNER FILE CODE:
T6S-R9W-J-21

ORIGINAL USPLS SURVEY: Corner established by Jacob Fowler, Dec. 21(?), 1805 "Post".

COUNTY SURVEYOR'S BOOKS: Book 1 P. 21: Isaac Adams WCS Dec. 7, 1853 "Wood Post".

Book 1 P. 27: Isaac Adams WCS May 19, 1854 (Mon. not identified).

Book 3 P. 90: J.H.Wilke WCS Dec. 6, 1906 "Old corner Stone" (12" Hick. SW 1 ft.).

Book 3 P. 205: Louis Meyer WCS April 2, 1915 "Old corner".

OTHER SURVEYS AND PLATS: An undated reference on the "Corner Code System" card calls for "Stone in root of tree".

1994 INDOT survey (K.E. Jackson) included a calculated position re-established using lot corners in Rolling Hills Manor. The calc'd position fell in a 30" oak. Mr. Jackson's survey report notes that "... The property owner where the tree is located stated that there used to be a stone at the tree that surveyors had used in the past but that she hadn't seen this stone recently..."

VERIFICATION OF CORNER POSITION: March, 2003; as in Mr. Jackson's report, lot corner monuments on the north line of Lot 6 of Rolling Hills Manor were recovered and were used to re-establish the corner position, which falls under the root base of a tree (determined to be a hickory). An axle north of the corner was also tied in; the distance from the calculated corner to the axle is within 0.02' of the distance to an "IP" shown on the old Corner Code reference. Despite the differences in tree identifications, it appears likely that the hickory shown, the tree referred to by Mr. Jackson, the tree referred to on the undated Corner Code System reference, and the bearing tree identified in 1906 by the Warrick County Surveyor are all the same. The axle and the lot corners shown serve as witnesses to the calculated corner; no additional witness points were set.

Perry E. Jones 3/17/03

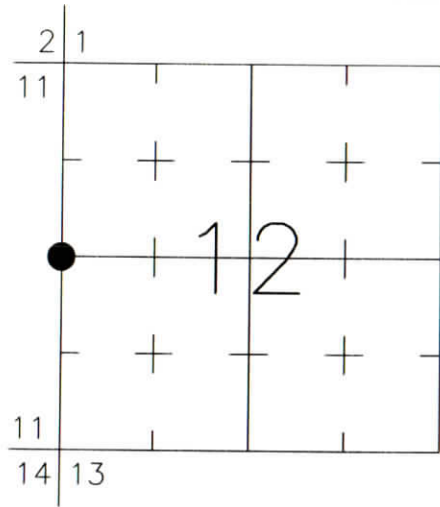
CORNER RECORD WARRICK COUNTY



DESCRIPTION:
 SOUTHWEST CORNER NORTHWEST QUARTER
 SECTION 12, T. 6 S., R. 9 W.
 2nd PRINCIPLE MERIDIAN

WARRICK COUNTY SURVEYOR
 KARAN HARGRAVE-BARNHILL

INDICATE CORNER REFERENCED:



MONUMENT TYPE: RAILROAD SPIKE
 SIZE:
 DEPTH/HEIGHT: 10" BELOW PVMT. GRADE
 REFERENCE TIE DRAWING:

FOR NOTES ON CORNER HISTORY SEE REVERSE.

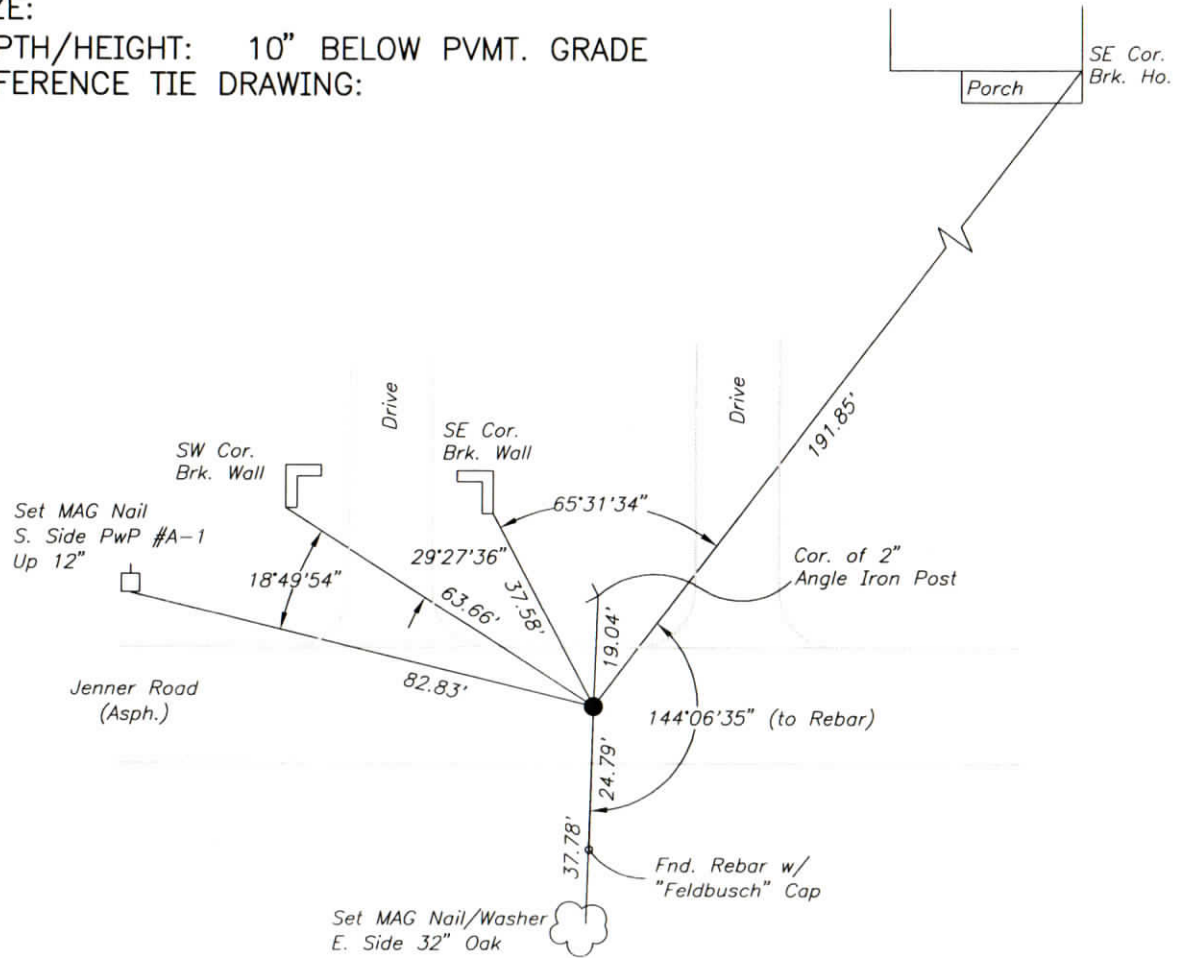
STATE PLANE COORDINATE DATA:
 INDIANA WEST ZONE, NAD 83 (1997)
 U.S. SURVEY FEET

X _____
 Y _____

COORDINATES ESTABLISHED BY:

APPROVED BY:

DATE:



REFERENCED BY: D.DREES/R.HARLAN

DATE: 9/18/02

APPROVED BY: P.JONES, RLS#9600016

DATE: 9/25/02

CORNER FILE CODE:
 T6S-R9W-G-21

CORNER HISTORY:

CORNER FILE CODE:
T6S-R9W-G-21

ORIGINAL USPLS SURVEY: Corner established by Jacob Fowler, Dec. 22, 1805 "Post".

COUNTY SURVEYOR'S BOOKS: Book 1 P. 27: Isaac Adams WCS May 19, 1854 (Mon. not identified).

Book 1 P. 187: O.B.Pasco 1877 (Mon. not identified, Stones set on line to North)

Book 4 P. 9: C. Warren Abbott WCS April 30, 1945 "Iron pin ... set by some former survey (no record) but accepted by interested parties. A piece of concrete was set 20 ft. north of pin on line."

Book 4 P. 75: C. Warren Abbott (date?) (corner mon. not identified - set iron pipe 616.95' East on line in ctr. of Old Plank Rd).

OTHER SURVEYS AND PLATS: "Corner Record" cards show a 1976 reference for a RR spike taken from the plat of Shubiak Subdivision, and a 1994 ref. to RR Spike taken from plat of Meadowview Estates.

The 1978 plat of Rolling Hills estates ties to and references the corner (monument not identified).

VERIFICATION OF CORNER POSITION: September, 2002: The railroad spike shown was found in place, its position reasonably consistent with the 1976 and 1994 reference ties described above.

Perry E. Jones 9/24/02

CORNER RECORD
WARRICK COUNTY



DESCRIPTION:

NW CORNER NE 1/4 NW 1/4

SECTION 12, T. 6 S. R. 9 W.

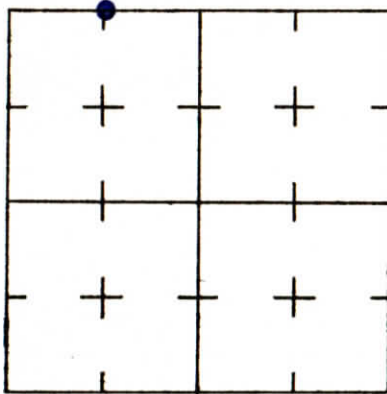
2nd PRINCIPLE MERIDIAN

Orchard Heights Subdivision sec "A" # 259

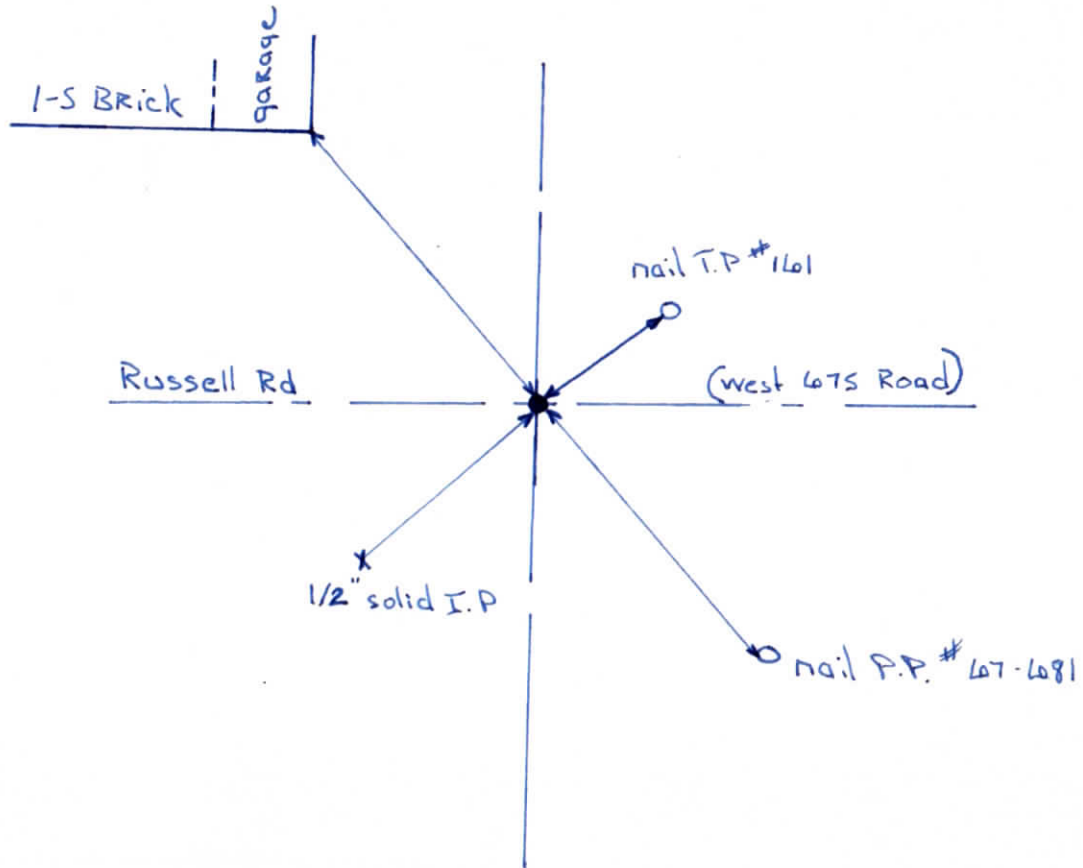
WARRICK COUNTY SURVEYOR

MICHAEL IRVIN

INDICATE CORNER REFERENCED



DESCRIBE CORNER REFERENCED



STATE PLANE COORDINATE DATA

INDIANA ZONE: WEST

X _____

Y _____

ESTABLISHED BY:

APPROVED BY

DATE

REFERENCED BY:

DATE

Elmo D Dockery

June 8, 1977

CORNER RECORD
WARRICK COUNTY



DESCRIPTION: ^{NW/4}
NW CORNER SW/4

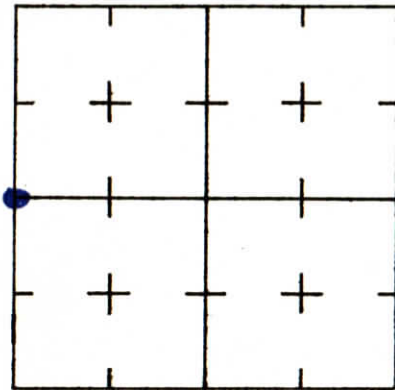
SECTION 12, T. 6 S. R. 9 W.

2nd PRINCIPLE MERIDIAN

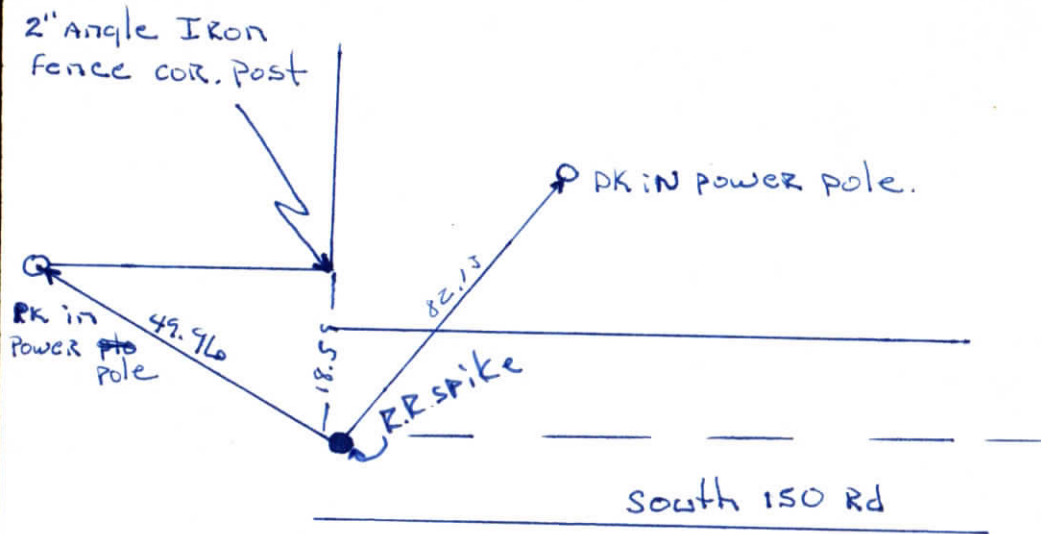
WARRICK COUNTY SURVEYOR
MICHAEL IRVIN

Shubiak Subdivision # 247

INDICATE CORNER REFERENCED



DESCRIBE CORNER REFERENCED



STATE PLANE COORDINATE DATA

INDIANA ZONE: WEST

X _____

Y _____

ESTABLISHED BY:

APPROVED BY

DATE

REFERENCED BY:

DATE

Elmo D Dockery

Dec 8' 1976

SQUIRE ESTATES

Section 12

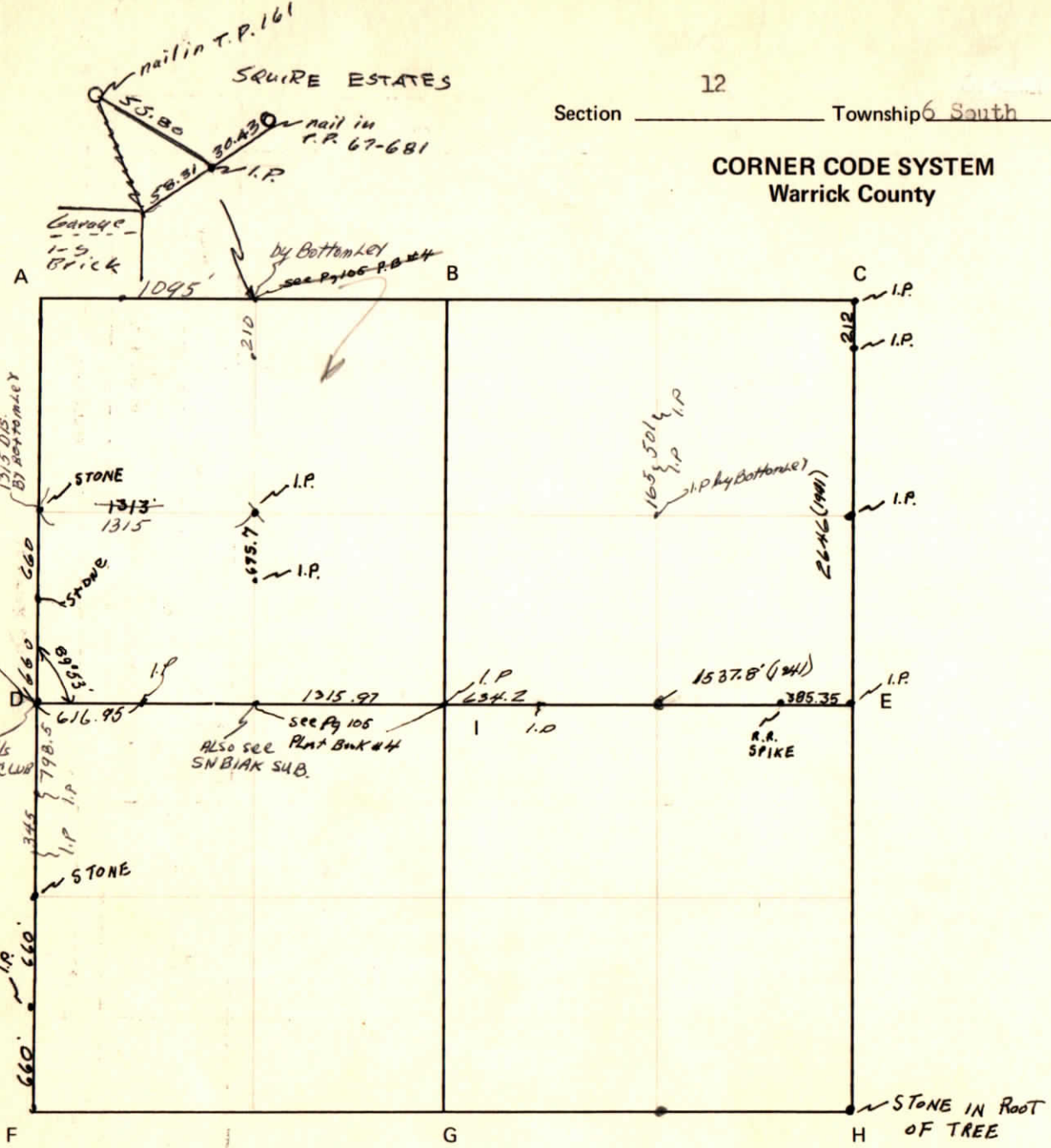
Township 6 South

Range 9 West

2nd P.M.

CORNER CODE SYSTEM Warrick County

NOTES



(BY W. REYNOLDS)
7-19-20

Rolling Hills
Country Club

RECORD OF SECTION CORNERS

Warrick County

Section 12 Township 6south Range 9w est 2nd Principle Meridian

Date	Cor	Description of		Distance from Corner	Azimuth from Corner (North Assumed)	Cond	Check By	Remarks
		Monument	Reference					
	A							
	B							
	C							
	D							
	E							
	F							
	G							
	H							
	I							

stone in roots
Hickory Tree

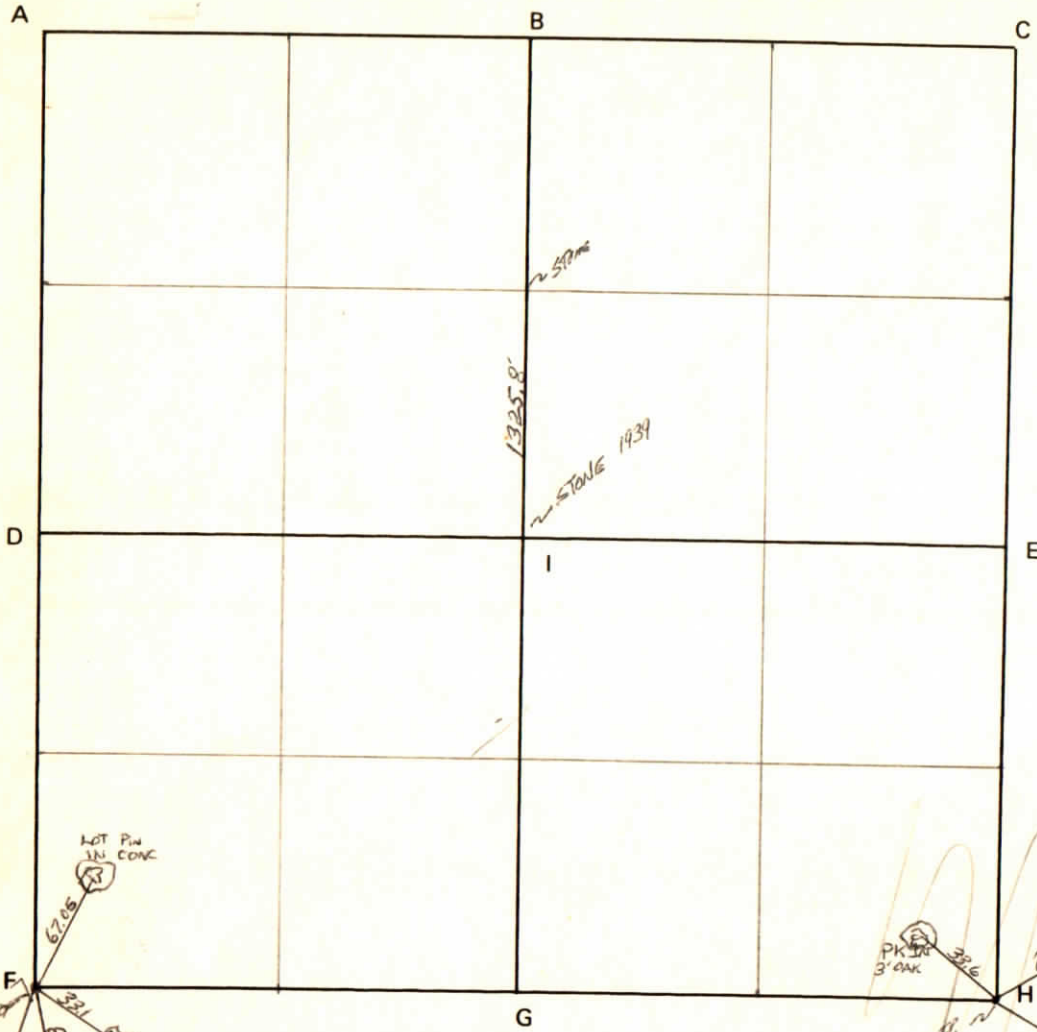
SE cor.
1953 swc G. Reynolds



WARRICK COUNTY SURVEYOR
MICHAEL F. FELDBUSCH

Section 13 Township 6 Range 9 2nd P.M.

CORNER CODE SYSTEM
Warrick County



NOTES

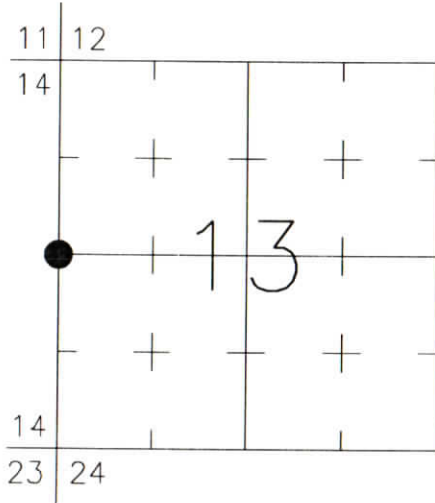
CORNER RECORD WARRICK COUNTY



DESCRIPTION:
SOUTHWEST CORNER NORTHWEST QUARTER
SECTION 13, T. 6 S., R. 9 W.
2nd PRINCIPAL MERIDIAN

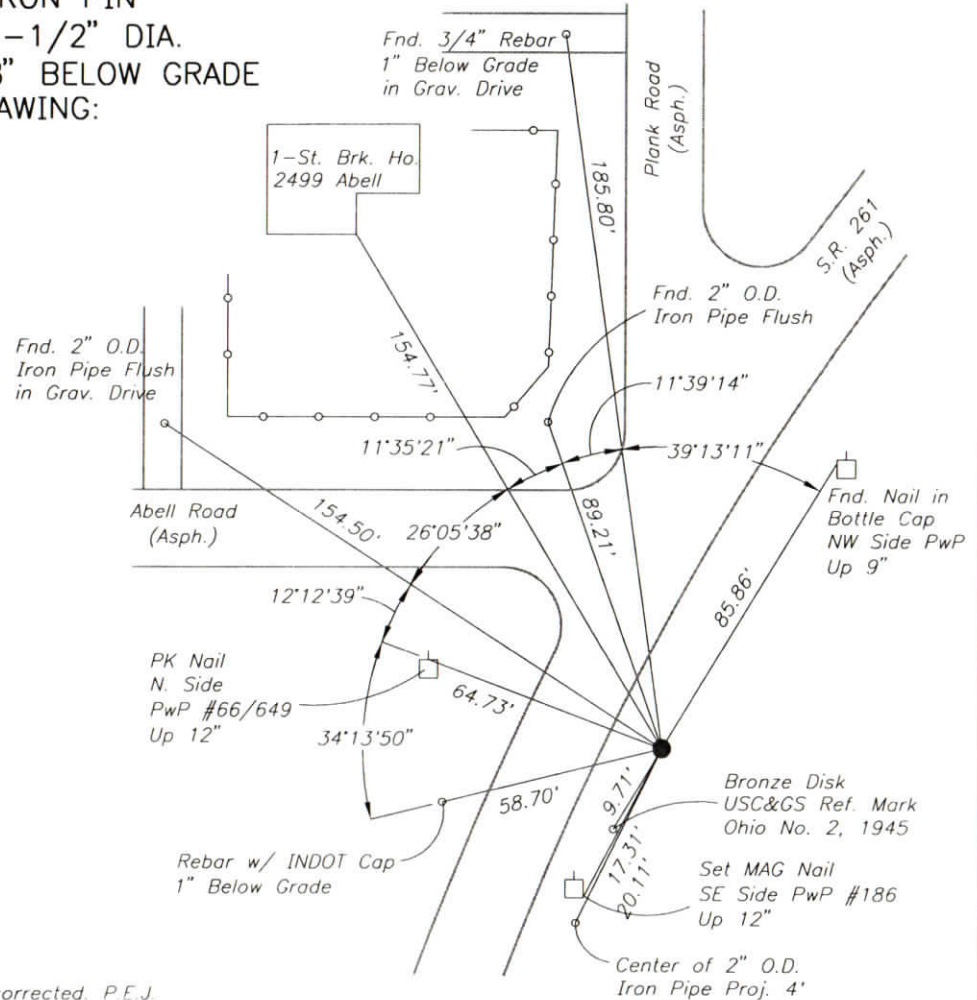
WARRICK COUNTY SURVEYOR
JAMES NIEMEYER

INDICATE CORNER REFERENCED:



MONUMENT TYPE: IRON PIN
SIZE: 1-1/2" DIA.
DEPTH/HEIGHT: 8" BELOW GRADE
REFERENCE TIE DRAWING:

FOR NOTES ON CORNER HISTORY SEE REVERSE.



STATE PLANE COORDINATE DATA:
INDIANA WEST ZONE, NAD 83 (1997)
U.S. SURVEY FEET

X ---

Y ---

COORDINATES ESTABLISHED BY:

APPROVED BY:

DATE:

Rev.: 9/9/05 Section Number corrected. P.E.J.

REFERENCED BY: R.HAHN/M.BURRESS

APPROVED BY: P.JONES, RLS#9600016

DATE: 9/6/02

DATE: 9/11/02

CORNER FILE CODE:
T6S-R9W-L-21

CORNER HISTORY:

CORNER FILE CODE:
T6S-R9W-L-21

ORIGINAL USPLS SURVEY: Corner established by Jacob Fowler, Dec. 21(?), 1805 "Post".

COUNTY SURVEYOR'S BOOKS: Book 1 P. 21: Isaac Adams WCS Dec. 7, 1853 (Mon. not identified)

Book 3 P. 90: J.H.Wilke WCS Dec. 6, 1906 (Sec. Line run but no mention of this corner)"

OTHER SURVEYS AND PLATS: 1994 INDOT survey (K.E. Jackson) tied in and referenced a 1-1/2" rebar 2" below grade. Mr. Jackson's survey report states that the rebar agrees with monuments found in Groeninger's Place Subdivision, but due to a variety of other monuments found in the area, Mr. Jackson reported uncertainties of approximately 41' N, 19' S, 10' W, and 20' E.

A plat of survey by Ralph A. Easley (Doc. 2000R-000157) shows a 1-1/2" rebar found.

VERIFICATION OF CORNER POSITION: September, 2002: The 1-1/2" iron pin shown was found in place, consistent with reference ties from the 1994 INDOT route survey.

Perry E. Jones 9/11/02

CORNER RECORD
WARRICK COUNTY

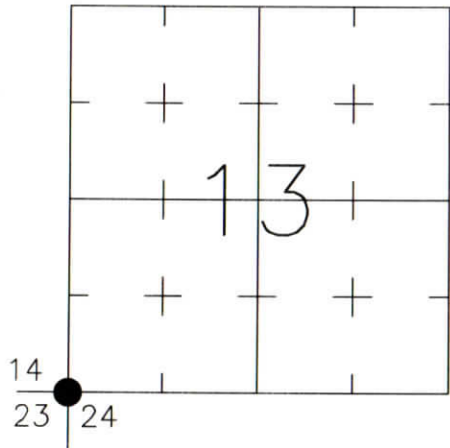


DESCRIPTION:

SOUTHWEST CORNER _____
SECTION 13, T. 6 S., R. 9 W.
2nd PRINCIPLE MERIDIAN

WARRICK COUNTY SURVEYOR
KARAN HARGRAVE-BARNHILL

INDICATE CORNER REFERENCED:



MONUMENT TYPE: RAILROAD SPIKE (PUNCHED)
SIZE:
DEPTH/HEIGHT: 5" BELOW GRADE
REFERENCE TIE DRAWING:

FOR NOTES ON CORNER HISTORY SEE REVERSE.

STATE PLANE COORDINATE DATA:
INDIANA WEST ZONE, NAD 83 (1997)
U.S. SURVEY FEET

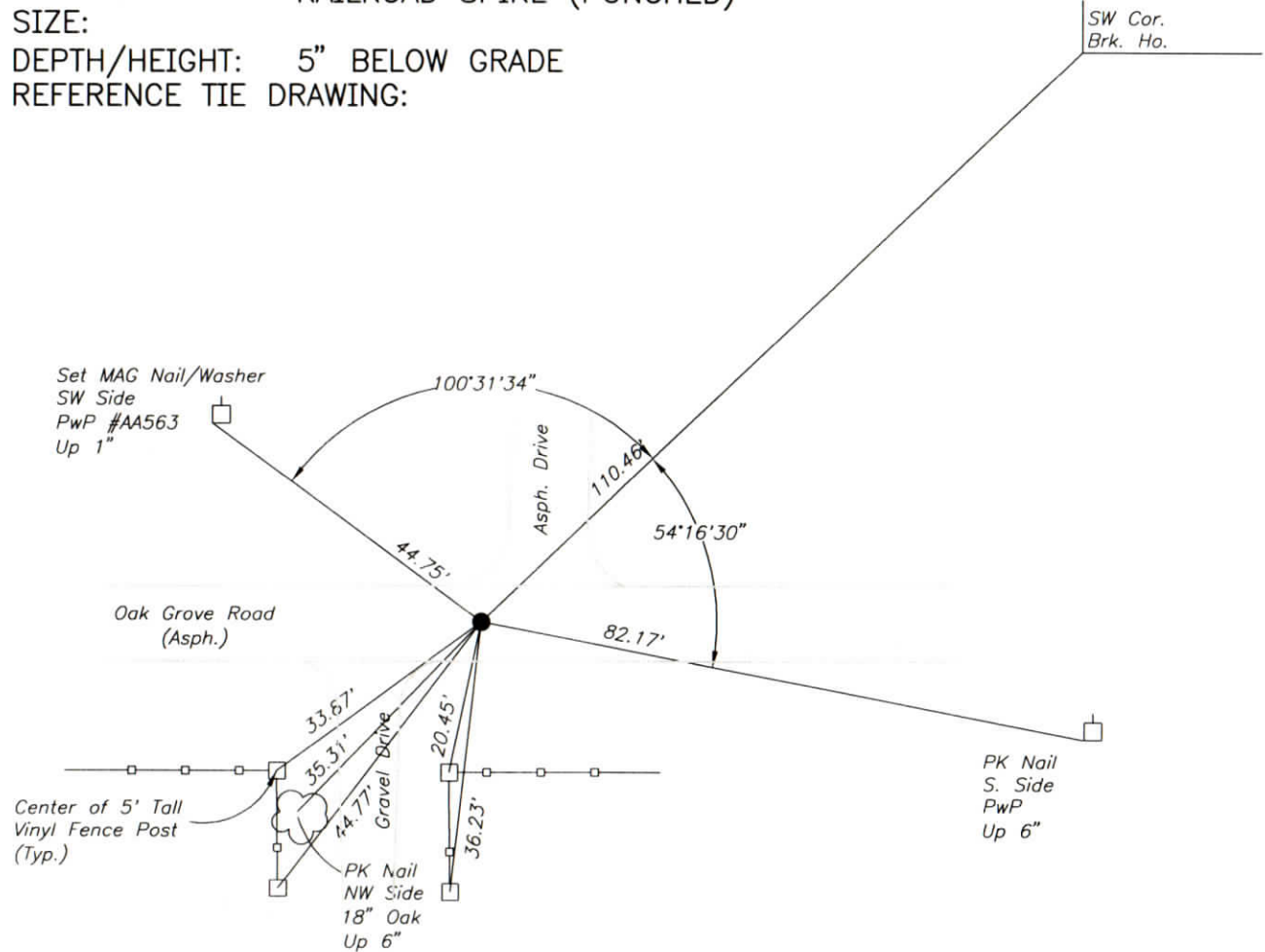
X _____

Y _____

COORDINATES ESTABLISHED BY:

APPROVED BY:

DATE:



REFERENCED BY: D.DREES/G.M.BURRESS DATE: 9/9/02

APPROVED BY: P.JONES, RLS#9600016

DATE: 9/26/02

CORNER FILE CODE:
T6S-R9W-N-21

CORNER HISTORY:

CORNER FILE CODE:
T6S-R9W-N-21

ORIGINAL USPLS SURVEY: Corner established by Jacob Fowler, Dec. 20, 1805 "Post".

COUNTY SURVEYOR'S BOOKS: Book 1 P. 21: Isaac Adams WCS Dec. 7, 1853 "Wood Post"

Book 3 P. 90: J.H.Wilke WCS Dec. 6, 1906 "Old established corner Stone"

Book 4 P. 7: C. Warren Abbott WCS Jan. 28, 1946 "3/4in. Iron pipe 3in. under" (29.5'N to PwP, 24' S to 14" Sass. 5" W. of line)

Book 4 P. 11: C. Warren Abbott WCS April 2, 1946 "Iron pipe" (Stakes set 431.5' S & 346.5' E).

OTHER SURVEYS AND PLATS: "Corner Code System" card shows an undated reference to a 1-1/2" IP.

1994 INDOT survey (K.E. Jackson) tied in and referenced a RR Spike 3" below grade, reports that it "Agrees with Warrick County Surveyor's ties".

Location Control Route Survey for S.R. 261 by Alvin A. Paul (Doc. 1999R-007461) tied in and referenced a punched RR spike. Project coordinates for the spike matched those of the INDOT survey within 0.05 feet.

The plat of Paradise Park (Doc. 2001R-002045) shows a punched RR spike.

VERIFICATION OF CORNER POSITION: September, 2002: The railroad spike shown was found in place and referenced. The spike is known to be the same spike as is shown on the plat of Paradise Park. Reference ties shown on the Alvin Paul Route Survey checked within 0.1 foot.

Perry E. Jones 9/26/02

CORNER RECORD WARRICK COUNTY



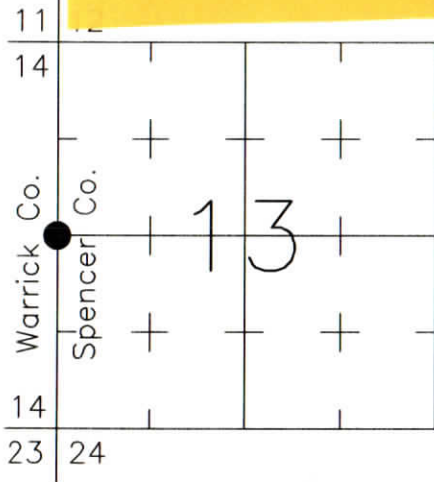
DESCRIPTION:
 SOUTHWEST CORNER NORTHWEST QUARTER
 SECTION 13, T. 6 S., R. 9 W.
 2nd PR.

WARRICK COUNTY SURVEYOR
 KARAN HARGRAVE-BARNHILL

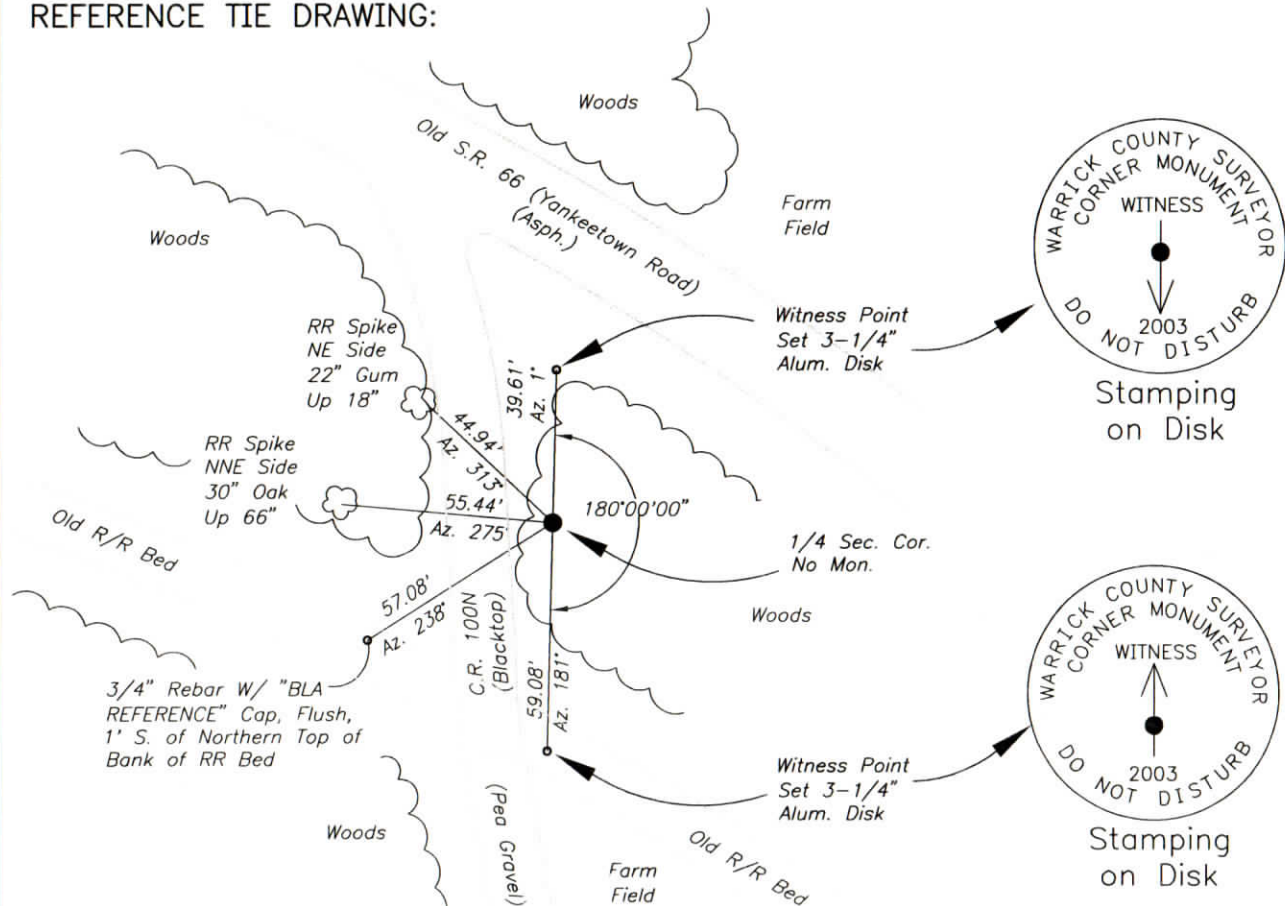
13 7 8
 -1 2013/04/13

INDICATED CORNER REFERENCE MONUMENT TYPE: NO MON. (WITNESS POINTS)

FOR NOTES ON CORNER HISTORY SEE REVERSE.



DEPTH/HEIGHT:
 REFERENCE TIE DRAWING:



STATE PLANE COORDINATE DATA:
 INDIANA WEST ZONE, NAD 83 (1997)
 U.S. SURVEY FEET

X
 Y

COORDINATES ESTABLISHED BY:

APPROVED BY:

DATE:

REFERENCED BY: M.BADGER/G.M.BURRESS DATE: 6/9/03

APPROVED BY: P.JONES, RLS#9600016

DATE: 7/29/03

CORNER FILE CODE:
 T7S-R8W-L-21

CORNER HISTORY:

CORNER FILE CODE:
T7S-R8W-L-21

ORIGINAL USPLS SURVEY: Corner established by Sam H. Smith, Nov 14, 1806 "Post"

COUNTY SURVEYOR'S BOOKS: Spencer Co. Book 8 Pp. 46-47: Wm. W. Wells SCS Nov. 8, 1809 includes a distance dimension easterly from the corner but does not identify a monument

Warrick Co. Book 1 P. 102 (Sec. No. is unclear, appears to subdivide the NE 1/4 of Sec. 14 but does not identify monuments).

Warrick Co. Book 2 P. 151: Wm. H. Temme, WCS March 10, 1896, a survey for a public highway (running southerly from the corner approximately 2 miles); shows a distance dimension of 80.36 chains northerly from the east 1/4-corner of Section 23; it is unclear whether the dimension is to the east 1/4 corner of Section 14 or to a roadway running northwesterly/southeasterly, or to both.

OTHER SURVEYS AND PLATS: No current corner record cards were available in either Warrick or Spencer Counties.

1927 road plans for old State Road 66 (now Yankeetown Road), Project 174, show a "corner stone" located on the county line and 54.7' northeasterly of the E&OV Traction Line tracks.

VERIFICATION OF CORNER POSITION: April, 2003: The position of the corner stone shown on the 1927 road plans was re-established with an estimated uncertainty of +/- 5' in all directions; the survey baselines shown on the 1927 plans and on 1929 road plans for Project 188 (old State Road 66, east of the county line) were re-established using the existing pavement centerline of Yankeetown Road.

Old deeds for the traction line (Warrick Co. Deed Rec. 67, multiple pages including 189 thru 239, provided by Doug McDonald, RLS) indicate the traction line R/W to be 50' each side of the track. Deed Record 67, page 239 (dated 1904) clearly indicates that the northern R/W line of the railroad runs THROUGH the 1/4-section corner. Therefore the stone shown on the 1927 road plans was presumed to be the 1/4-section corner as described in the 1904 deed. Despite the consistency between the road plans and the railroad deed, there remains considerable uncertainty in this position due to the deficiency in distance to the northeast corner of Section 14 (2538.90' measured) and due to the deed description in Warrick Co. Doc. 1996R-009724 which describes a 6.0-acre tract between the south line of the SE 1/4 NE 1/4 Section 14 and the southern boundary of the railway (the south line of the 1/4-1/4 as re-established falls entirely within the railway boundaries). The resulting uncertainty in this corner is as much as 230' southerly. For additional information, see the Boundary Retracement Survey dated 7/10/03, recorded in _____ in Warrick Co. and in _____ in Spencer County (Bernardin-Lochmueller & Assoc. Proj. No. 102-0060-OSV/SV0B).

June, 2003; the re-established corner position falling in a ditch, aluminum disk witness points (straddle points) were set on the northern and southern banks.

Perry E. Jones 7/29/03

CORNER RECORD
WARRICK COUNTY



DESCRIPTION :

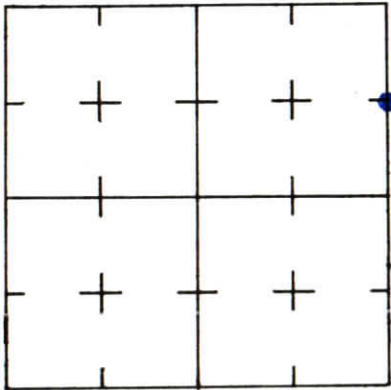
NE CORNER 5/2 4E/4

SECTION 13, T. 6 S. R. 9 W.

2nd PRINCIPLE MERIDIAN

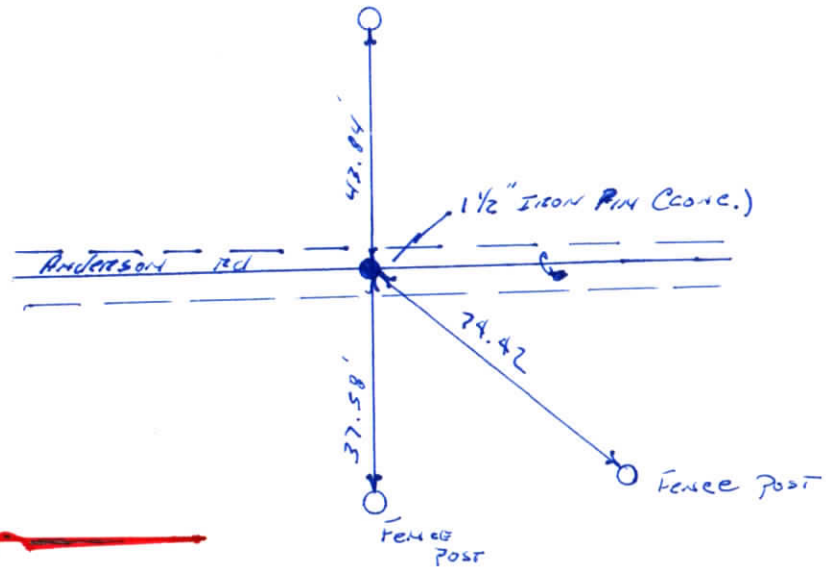
WARRICK COUNTY SURVEYOR
KARAN HARGRAVE-BARNHILL

INDICATE CORNER REFERENCED



DESCRIBE CORNER REFERENCED

*Blue LAKE Estates #1
SECTION "A"*



STATE PLANE COORDINATE DATA

INDIANA ZONE: WEST

X _____

Y _____

ESTABLISHED BY:

APPROVED BY

DATE

REFERENCED BY:

DATE

CORNER RECORD
WARRICK COUNTY

DESCRIPTION :

SE CORNER NE¹/₄

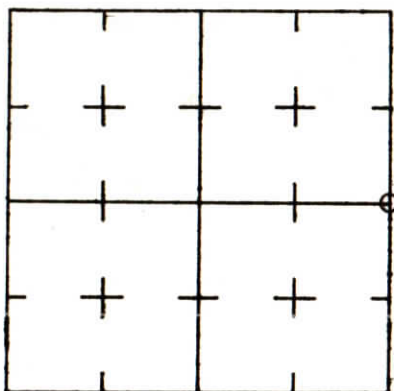
SECTION 13, T. 6 S. R. 9 W.

2nd PRINCIPLE MERIDIAN

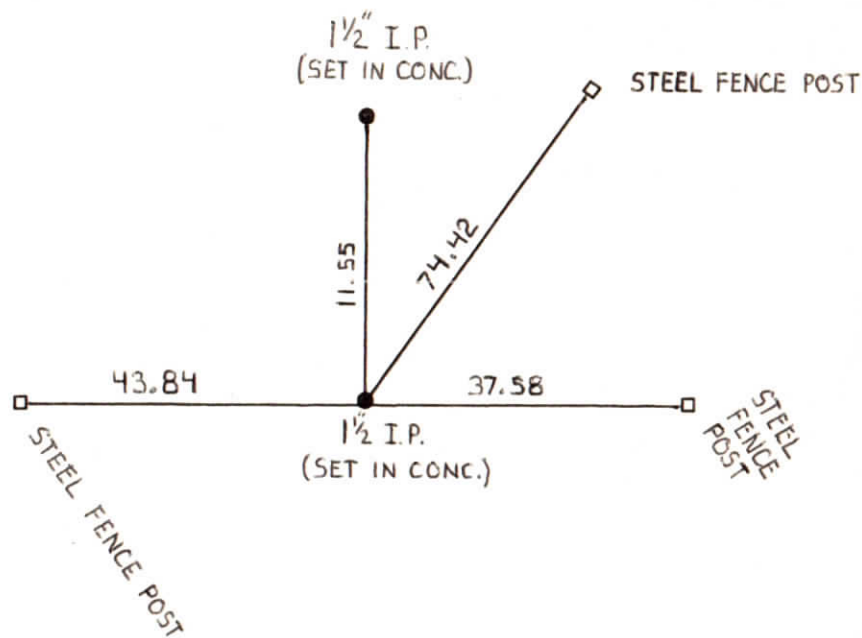
WARRICK COUNTY SURVEYOR
MICHAEL IRVIN



INDICATE CORNER REFERENCED



DESCRIBE CORNER REFERENCED



STATE PLANE COORDINATE DATA

INDIANA ZONE: WEST

X 420,504.70

Y 181,485.09

ESTABLISHED BY:

L. HOFFMAN

APPROVED BY

DATE
4-25-1985

REFERENCED BY:

DATE

**CORNER RECORD
WARRICK COUNTY**



DESCRIPTION :

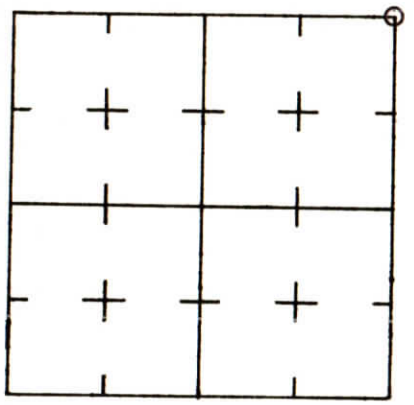
NE CORNER NE 1/4

SECTION 13, T. 6 S. R. 9 W.

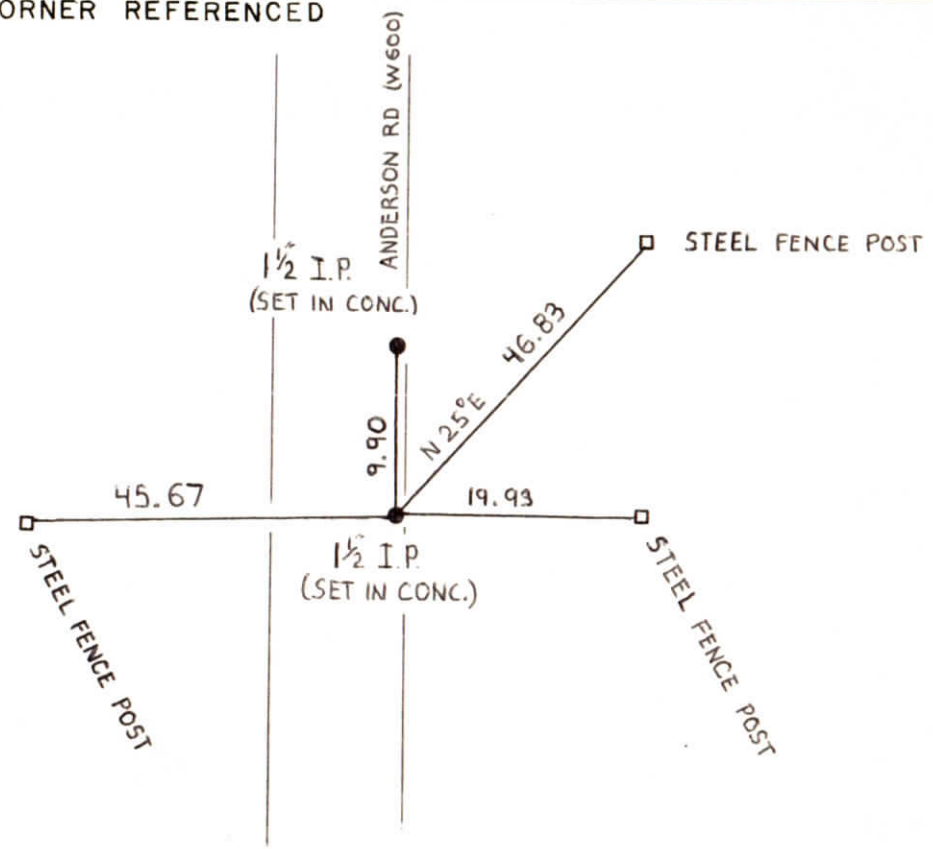
2nd PRINCIPLE MERIDIAN

**WARRICK COUNTY SURVEYOR
MICHAEL IRVIN**

INDICATE CORNER REFERENCED



DESCRIBE CORNER REFERENCED



STATE PLANE COORDINATE DATA

INDIANA ZONE: WEST

X 420,528.70

Y 184,113.96

ESTABLISHED BY:

L. HOFFMAN

APPROVED BY

DATE
4-25-1985

REFERENCED BY:

DATE

CORNER RECORD
WARRICK COUNTY

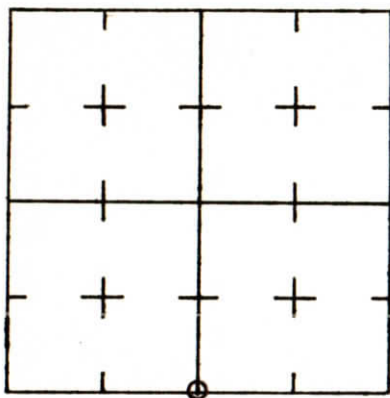


DESCRIPTION: SE CORNER ^{SE 1/4} SW 1/4

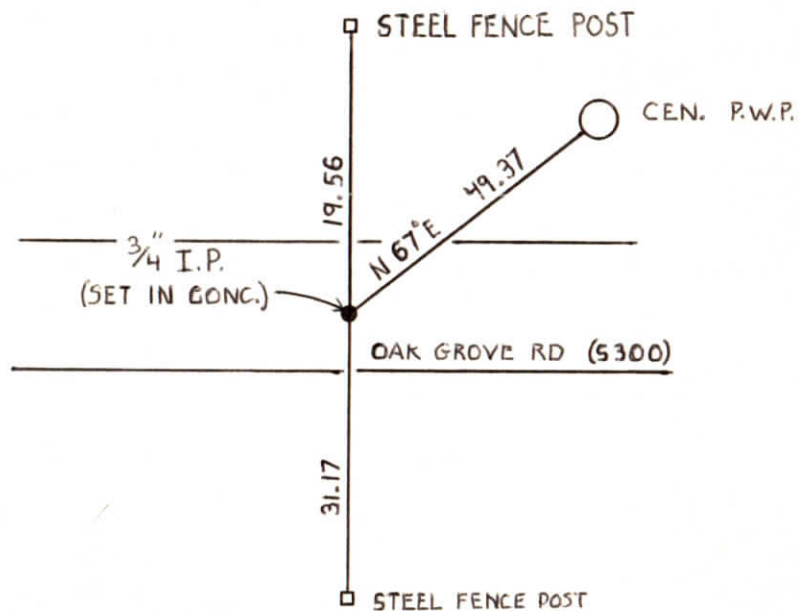
SECTION 13, T. 6 S. R. 9 W.
2nd PRINCIPLE MERIDIAN

WARRICK COUNTY SURVEYOR
MICHAEL IRVIN

INDICATE CORNER REFERENCED



DESCRIBE CORNER REFERENCED



STATE PLANE COORDINATE DATA

INDIANA ZONE: WEST

X 417,866.84

Y 178,865.73

ESTABLISHED BY:

L. HOFFMAN

APPROVED BY

DATE
4-25-1985

REFERENCED BY:

DATE

CORNER RECORD
WARRICK COUNTY



DESCRIPTION :

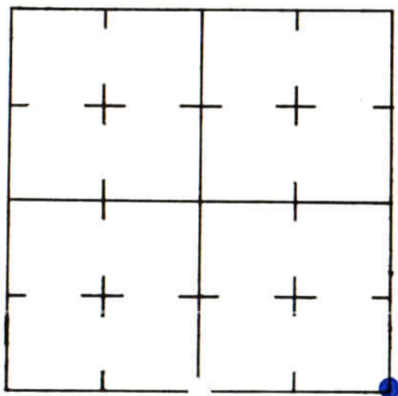
SE CORNER SE 1/4

SECTION 13, T. 6 S. R. 9 W.

2nd PRINCIPLE MERIDIAN

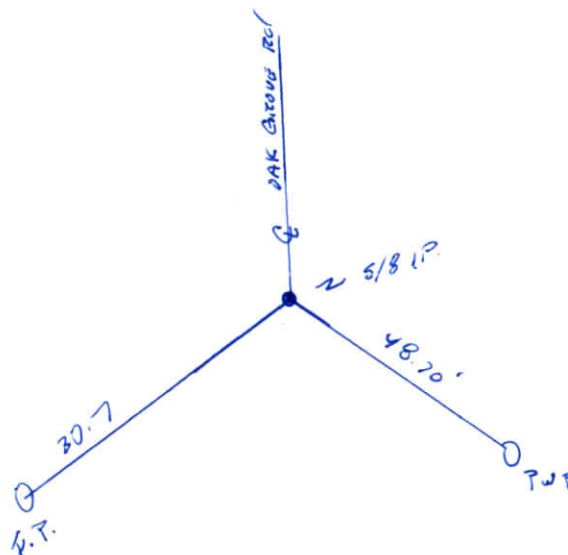
WARRICK COUNTY SURVEYOR
KARAN HARGRAVE-BARNHILL

INDICATE CORNER REFERENCED



DESCRIBE CORNER REFERENCED

BLUE LAKE ESTATES # 2 SEC "B"



STATE PLANE COORDINATE DATA

INDIANA ZONE: WEST

X _____

Y _____

ESTABLISHED BY:

APPROVED BY

DATE

REFERENCED BY:

DATE

Albert K. Holtz

[Signature] J-12-87

**CORNER RECORD
WARRICK COUNTY**



DESCRIPTION:

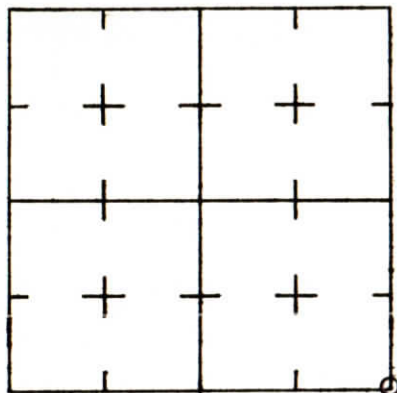
SE CORNER SE¹/₄

SECTION 13, T. 6 S. R. 9 W.

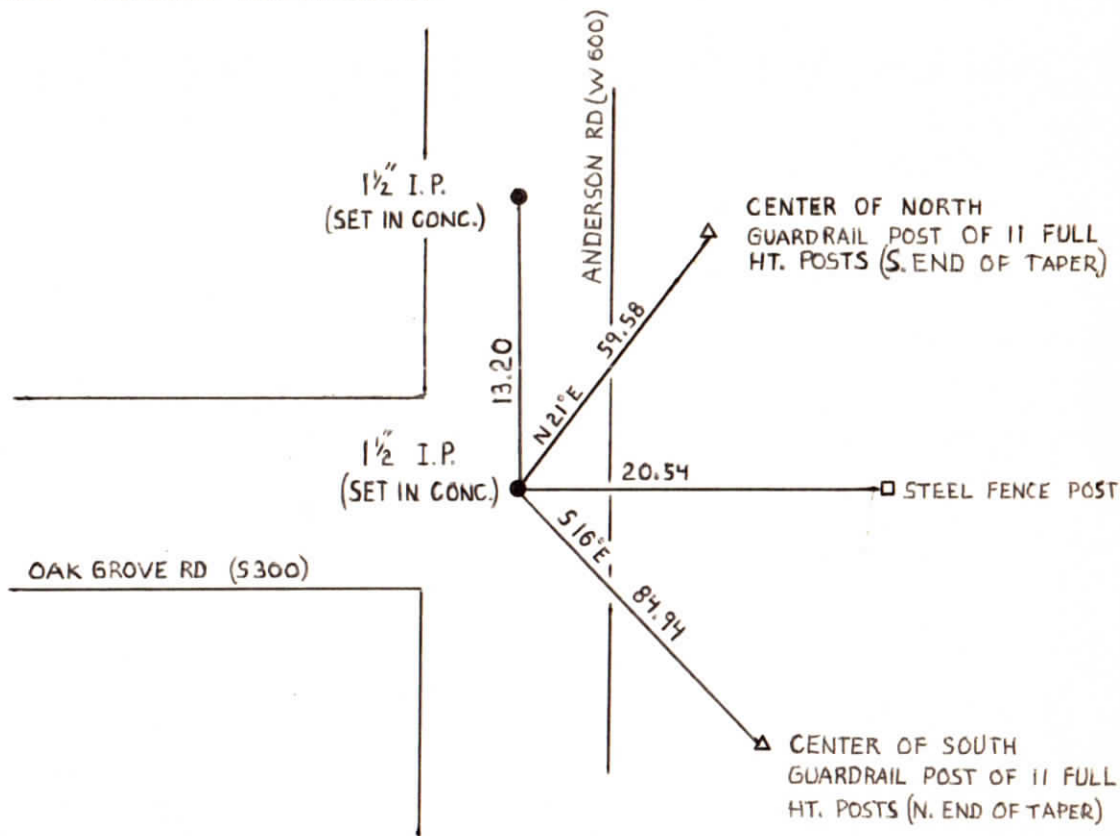
2nd PRINCIPLE MERIDIAN

**WARRICK COUNTY SURVEYOR
MICHAEL IRVIN**

INDICATE CORNER REFERENCED



DESCRIBE CORNER REFERENCED



STATE PLANE COORDINATE DATA

INDIANA ZONE: WEST

X 420,480.70

Y 178,856.22

ESTABLISHED BY:

L. HOFFMAN

APPROVED BY

DATE
4-25-1985

REFERENCED BY:

DATE

CORNER RECORD
WARRICK COUNTY



DESCRIPTION:

NE CORNER

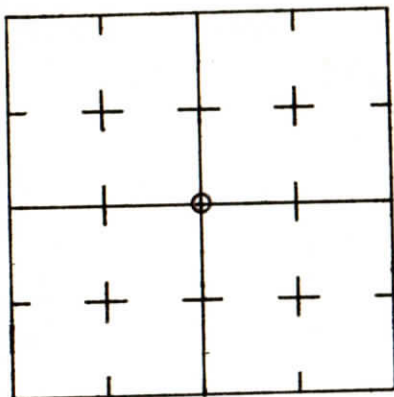
NE 1/4 SW 1/4
CENTER OF SECTION

SECTION 13, T. 6 S. R. 9 W.

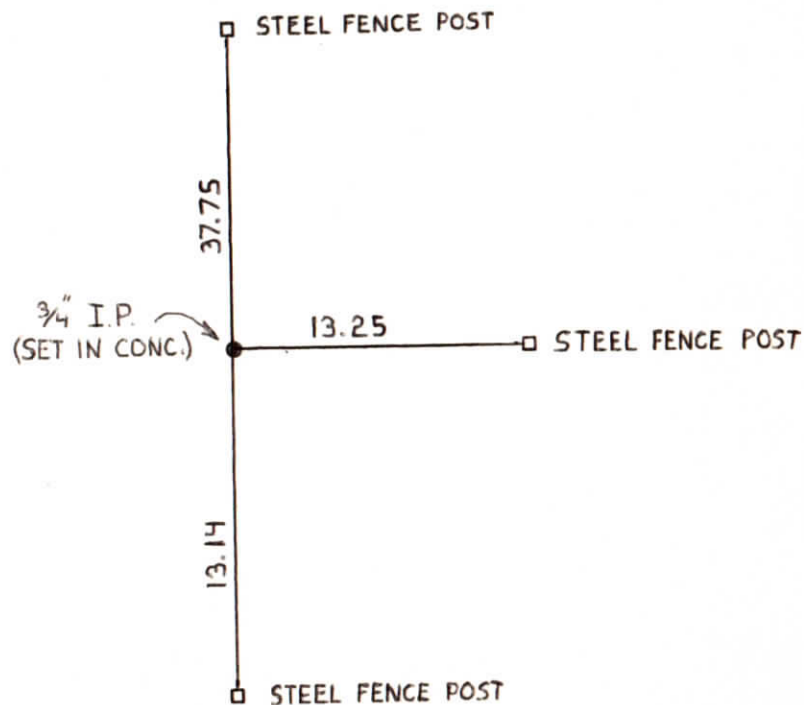
2nd PRINCIPLE MERIDIAN

WARRICK COUNTY SURVEYOR
MICHAEL IRVIN

INDICATE CORNER REFERENCED



DESCRIBE CORNER REFERENCED



STATE PLANE COORDINATE DATA

INDIANA ZONE: WEST

X 417,873.88

Y 181,509.18

ESTABLISHED BY:

L. HOFFMAN

APPROVED BY

DATE
4-25-1985

REFERENCED BY:

DATE

**CORNER RECORD
WARRICK COUNTY**



DESCRIPTION :

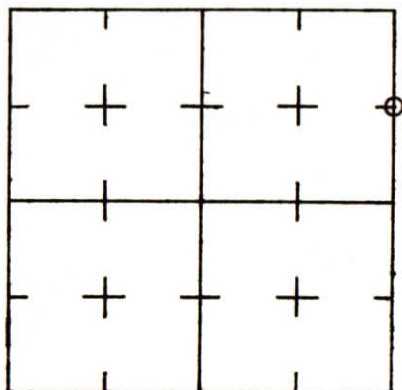
SE CORNER NE 1/4 NE 1/4

SECTION 14, T. 6 S. R. 9 W.

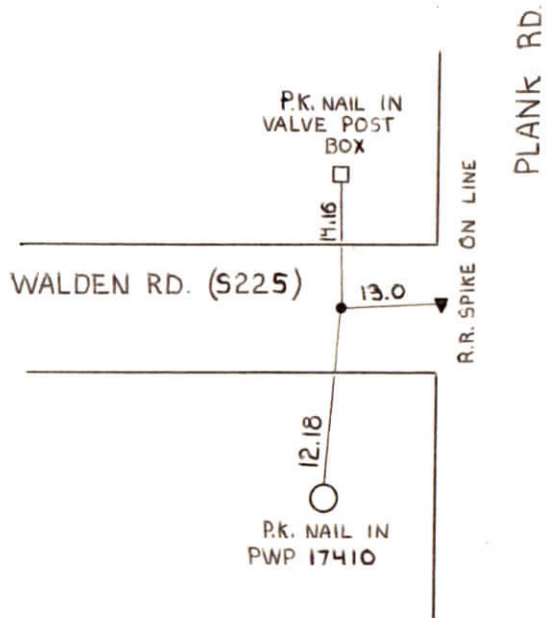
2nd PRINCIPLE MERIDIAN

**WARRICK COUNTY SURVEYOR
MICHAEL IRVIN**

INDICATE CORNER REFERENCED



DESCRIBE CORNER REFERENCED



STATE PLANE COORDINATE DATA

INDIANA ZONE: WEST

X _____

Y _____

ESTABLISHED BY:

APPROVED BY *NOT VERIFIED*

DATE
6-28-73

REFERENCED BY:

DATE

000045

SE corner NE $\frac{1}{4}$ NE $\frac{1}{4}$ S 14 T 6 S R 9 W

Type Monument: I.P.

Date referenced: 6-28-13

referenced by: SWC ✓

**CORNER RECORD
WARRICK COUNTY**

DESCRIPTION:

SW CORNER NE¹/₄ NE¹/₄

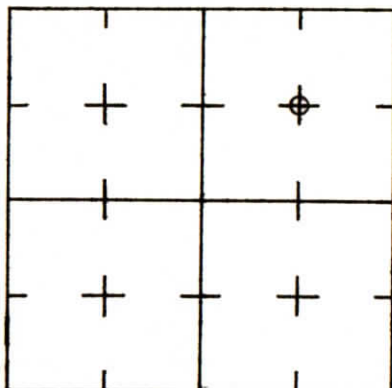
SECTION 14, T. 6 S. R. 9 W.

2nd PRINCIPLE MERIDIAN

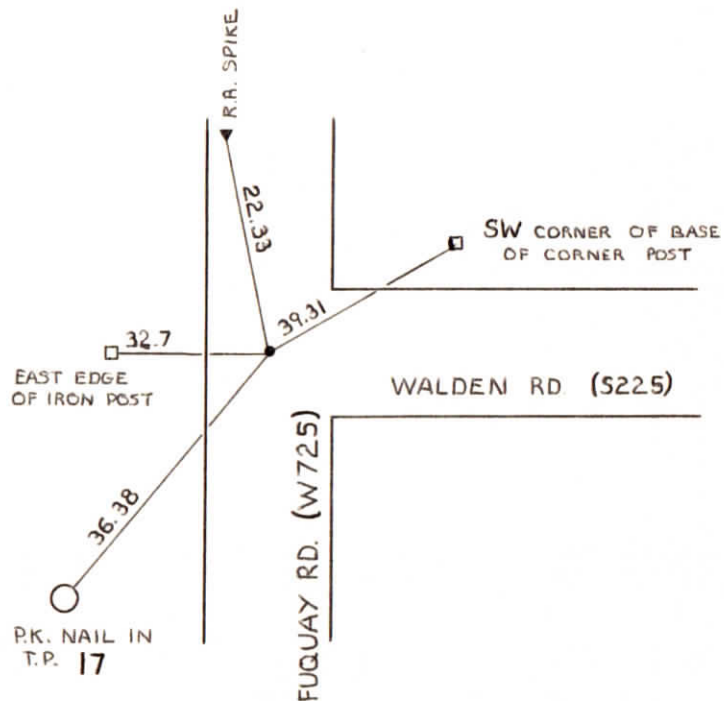
**WARRICK COUNTY SURVEYOR
MICHAEL IRVIN**



INDICATE CORNER REFERENCED



DESCRIBE CORNER REFERENCED



STATE PLANE COORDINATE DATA

INDIANA ZONE: WEST

X _____

Y _____

ESTABLISHED BY:

APPROVED BY *NOT VERIFIED*

DATE
6-28-73

REFERENCED BY:

DATE


000046

SW corner NE $\frac{1}{4}$ NE $\frac{1}{4}$ S14T6sR9w

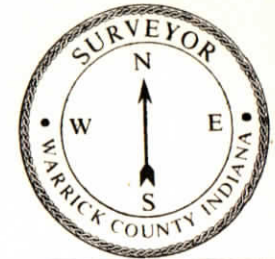
Type Monument: Iron Pipe (existing)

Date referenced: 6-28-73

referenced by: SWC



CORNER RECORD
WARRICK COUNTY



DESCRIPTION:

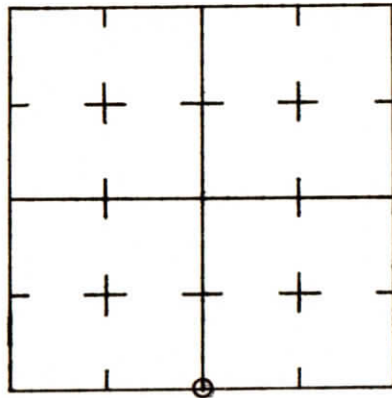
SW CORNER SE¹/₄

SECTION 14, T. 6 S. R. 9 W.

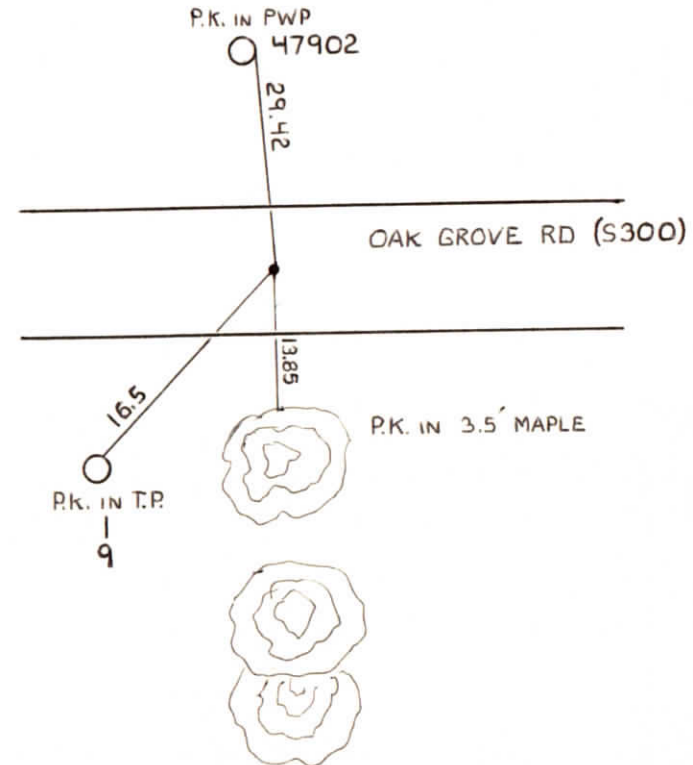
2nd PRINCIPLE MERIDIAN

WARRICK COUNTY SURVEYOR
MICHAEL IRVIN

INDICATE CORNER REFERENCED



DESCRIBE CORNER REFERENCED



STATE PLANE COORDINATE DATA

INDIANA ZONE: WEST

X _____

Y _____

ESTABLISHED BY:

APPROVED BY *NOT VERIFIED*

DATE
6-18-73

REFERENCED BY:

DATE

~~SE cor SW $\frac{1}{4}$ & (SW cor SE $\frac{1}{4}$) sec 14-T6s-R9W
NE cor NW $\frac{1}{4}$ & NW cor NE $\frac{1}{4}$ sec 23-T6s-R9W~~

~~000031~~

Type of Monument: I.D. (existing)

Date referenced: 6/18/73

referenced by: SWC

Entered
7-30-79
JST

CORNER RECORD
WARRICK COUNTY

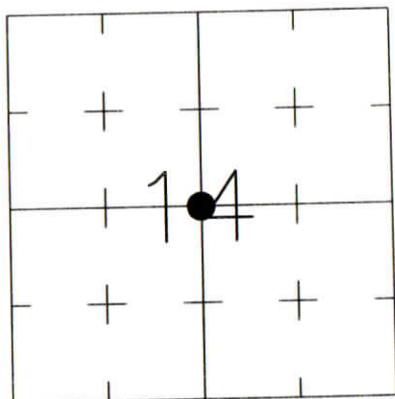


DESCRIPTION:
SOUTHWEST CORNER NORTHEAST QUARTER
SECTION 14, T. 6 S., R. 9 W.
2nd PRINCIPAL MERIDIAN

WARRICK COUNTY SURVEYOR
KARAN HARGRAVE-BARNHILL

FOR NOTES ON CORNER HISTORY SEE REVERSE.

INDICATE CORNER REFERENCED:



STATE PLANE COORDINATE DATA:
INDIANA WEST ZONE, NAD 83 (1997)
U.S. SURVEY FEET

X _____

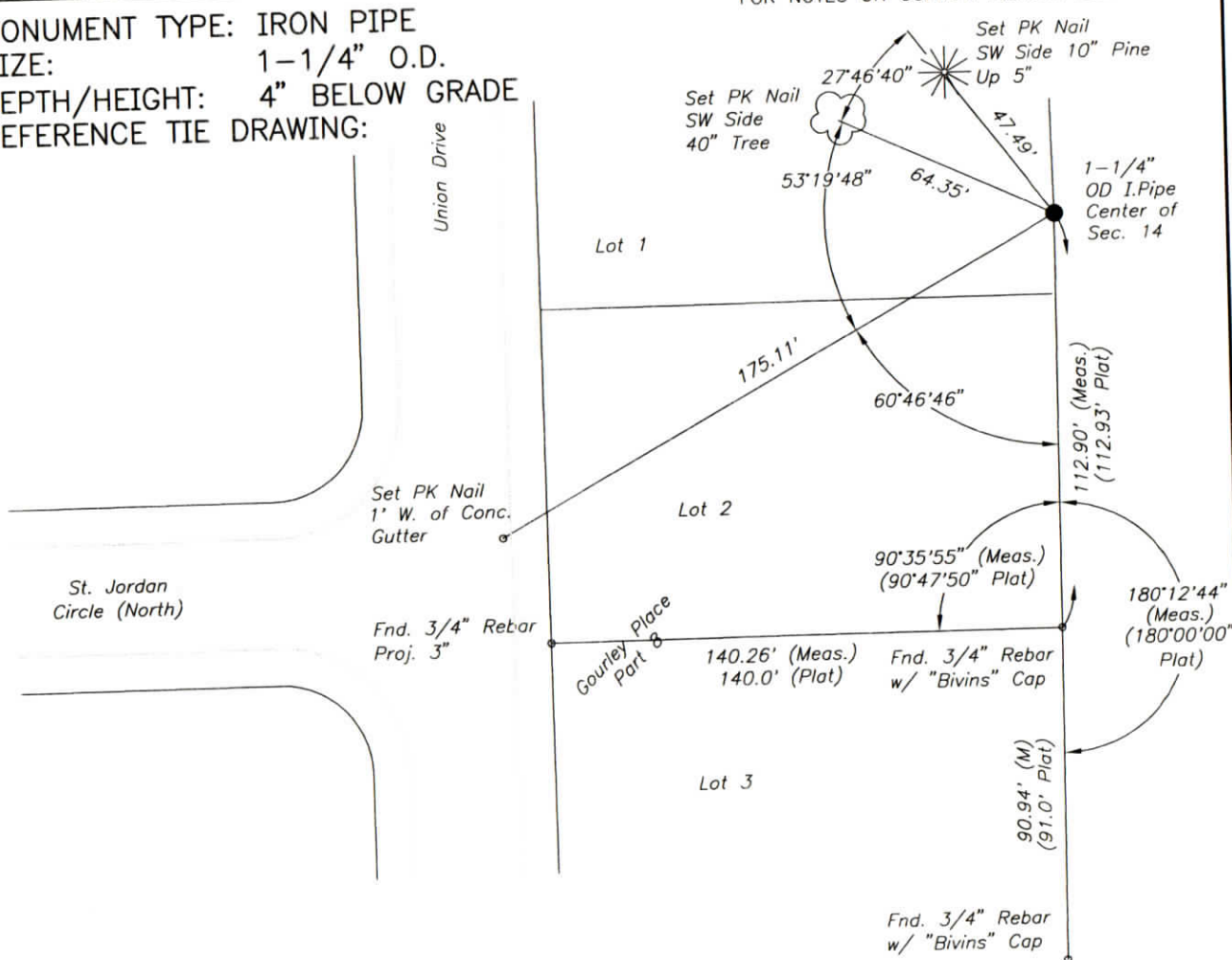
Y _____

COORDINATES ESTABLISHED BY:

APPROVED BY:

DATE:

MONUMENT TYPE: IRON PIPE
SIZE: 1-1/4" O.D.
DEPTH/HEIGHT: 4" BELOW GRADE
REFERENCE TIE DRAWING:



REFERENCED BY: R.HAHN/K.KLEIN

DATE: 9/5/02

APPROVED BY: P.JONES, RLS#9600016

DATE: 9/23/02

CORNER FILE CODE:
T6S-R9W-L-19

CORNER HISTORY:

CORNER FILE CODE:
T6S-R9W-L-19

ORIGINAL USPLS SURVEY: (Center of Section not monumented by USPLS Survey)

COUNTY SURVEYOR'S BOOKS: Book 1 P. 21: Isaac Adams WCS Dec. 7, 1853 "Wood Post".

OTHER SURVEYS AND PLATS: The 1991 plat of Timber View Estates includes ties to the corner (monument not identified).

The plat of Brookelyn Ridge Subdivision (Doc. 2001R-01251) shows a 1-1/4" pipe found.

The plat of Gourley Place Part Eight (Doc. 2002-0036211) shows ties to the corner (monument not identified).

VERIFICATION OF CORNER POSITION: September, 2002: The iron pipe shown was found in place. Its position relative to lot corners in Gourley Place Part Eight was reasonably consistent with plat dimensions, as shown.

Perry E. Jones 9/23/02

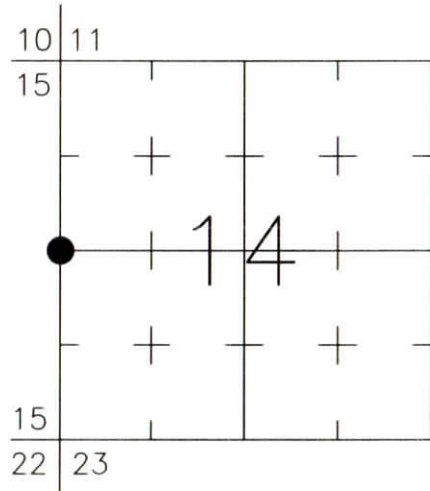
CORNER RECORD
WARRICK COUNTY

DESCRIPTION:
SOUTHWEST CORNER NORTHWEST QUARTER
SECTION 14, T. 6 S., R. 9 W.
2nd PRINCIPAL MERIDIAN

WARRICK COUNTY SURVEYOR
KARAN HARGRAVE-BARNHILL

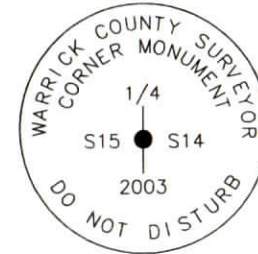


INDICATE CORNER REFERENCED:



MONUMENT TYPE: ALUMINUM DISK
SIZE: 3-1/4" DIAM.
DEPTH/HEIGHT: FLUSH
REFERENCE TIE DRAWING:

FOR NOTES ON CORNER HISTORY SEE REVERSE.



Stamping
on Disk

STATE PLANE COORDINATE DATA:
INDIANA WEST ZONE, NAD 83 (1997)
U.S. SURVEY FEET

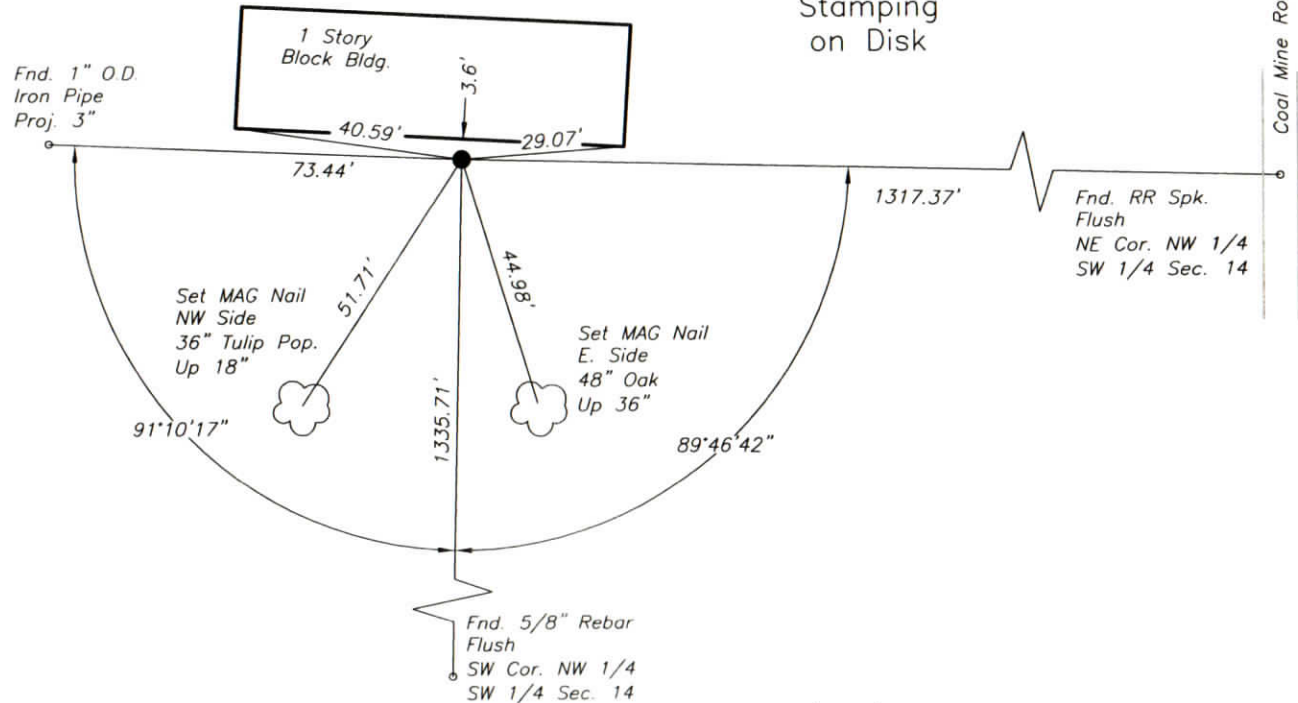
X ---

Y ---

COORDINATES ESTABLISHED BY:

APPROVED BY:

DATE:



REFERENCED BY: D.DREES/G.M.BURRESS
/K.DILGER
APPROVED BY: P.JONES, RLS#9600016

DATE: 5/30/03

DATE: 7/25/03

CORNER FILE CODE:
T6S-R9W-L-17

Coal Mine Road (Asph.)

CORNER HISTORY:

CORNER FILE CODE:
T6S-R9W-L-17

ORIGINAL USPLS SURVEY: Corner established by Jacob Fowler, Dec. 21(?), 1805 "Post".

COUNTY SURVEYOR'S BOOKS: Book 1 P. 21: Isaac Adams WCS Dec. 7, 1853 "Wood Post"

Book 1 P. 96: John C. Frary WCS Mar. 30, 1858 "Stake, Gov. trees standing"

Book 2 P. 31: O.B.Pasco WCS Oct. 30, 1883 (mon. not identified)

Book 3 P. 264 B.C.Samples Surveyor Aug. 9, 1929 "Corner Stone found in place"

OTHER SURVEYS AND PLATS: The plats of Brookelyn Ridge Subdivision (Doc. 2001R-01251) and Alanton Park Subdivision (Doc. 2002R-00112) show dimensions to a corner position noted "no monument found".

VERIFICATION OF CORNER POSITION: May 2003; ties were made to monuments shown on the Brookelyn Ridge and Alanton Park plats, and the aluminum disk shown was set using plat distances from the NE and SW corners of the NW 1/4 SW 1/4 of Section 14. Ties to other monuments in the two subdivisions yield an uncertainty of 0.2' in the monumented location.

Perry E. Jones 7/25/03

CORNER RECORD
WARRICK COUNTY

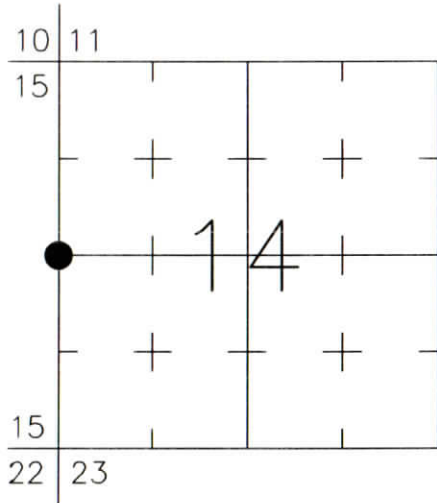


DESCRIPTION:
SOUTHWEST CORNER NORTHWEST QUARTER
SECTION 14, T. 6 S., R. 9 W.
2nd PRINCIPAL MERIDIAN

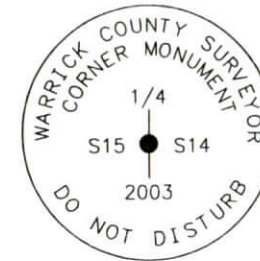
WARRICK COUNTY SURVEYOR
KARAN HARGRAVE-BARNHILL

FOR NOTES ON CORNER HISTORY SEE REVERSE.

INDICATE CORNER REFERENCED:



MONUMENT TYPE: ALUMINUM DISK
SIZE: 3-1/4" DIAM.
DEPTH/HEIGHT: FLUSH
REFERENCE TIE DRAWING:



Stamping
on Disk

STATE PLANE COORDINATE DATA:
INDIANA WEST ZONE, NAD 83 (1997)
U.S. SURVEY FEET

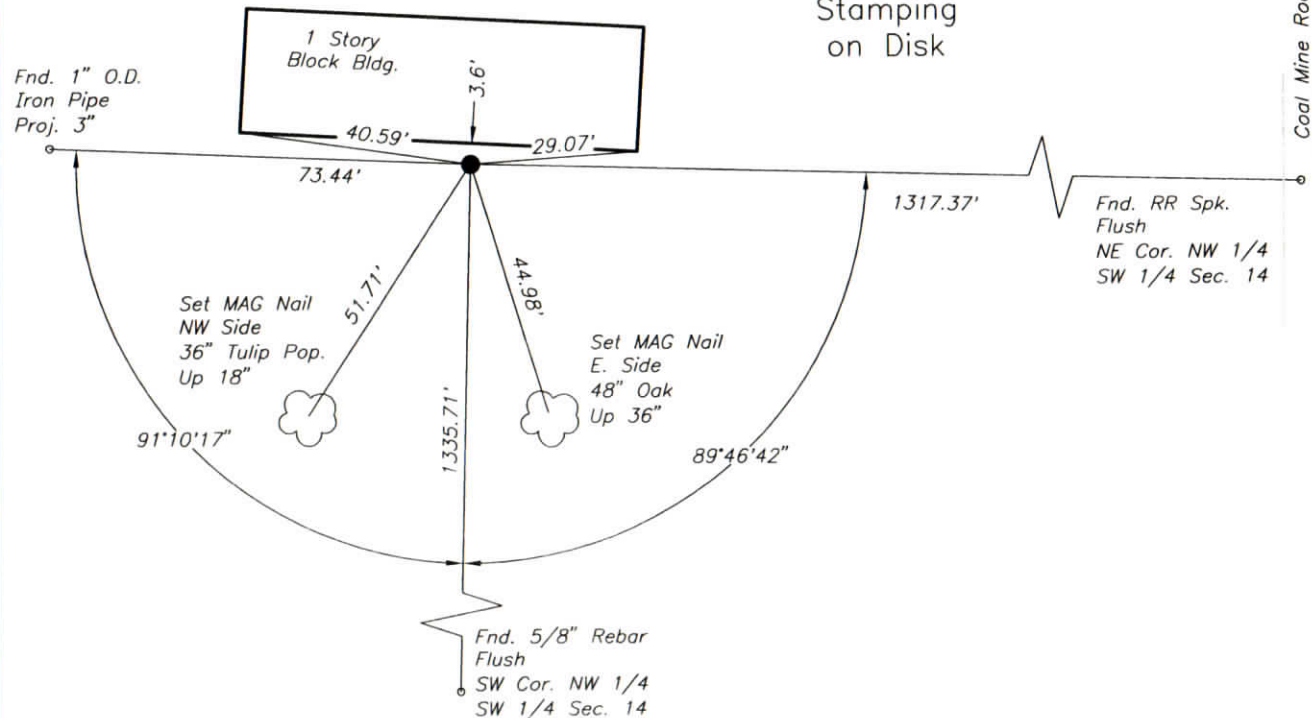
X ---

Y ---

COORDINATES ESTABLISHED BY:

APPROVED BY:

DATE:



REFERENCED BY: D.DREES/G.M.BURRESS
/K.DILGER

APPROVED BY: P.JONES, RLS#9600016

DATE: 5/30/03

DATE: 7/25/03

CORNER FILE CODE:
T6S-R9W-L-17

CORNER HISTORY:

CORNER FILE CODE:
T6S-R9W-L-17

ORIGINAL USPLS SURVEY: Corner established by Jacob Fowler, Dec. 21(?), 1805 "Post"

COUNTY SURVEYOR'S BOOKS: Book 1 P. 21: Isaac Adams WCS Dec. 7, 1853 "Wood Post"

Book 1 P. 96: John C. Frary WCS Mar. 30, 1858 "Stake, Gov. trees standing"

Book 2 P. 31: O.B.Pasco WCS Oct. 30, 1883 (mon. not identified)

Book 3 P. 264 B.C.Samples Surveyor Aug. 9, 1929 "Corner Stone found in place"

OTHER SURVEYS AND PLATS: The plats of Brookelyn Ridge Subdivision (Doc. 2001R-01251) and Alanton Park Subdivision (Doc. 2002R-00112) show dimensions to a corner position noted "no monument found".

VERIFICATION OF CORNER POSITION: May 2003; ties were made to monuments shown on the Brookelyn Ridge and Alanton Park plats, and the aluminum disk shown was set using plat distances from the NE and SW corners of the NW 1/4 SW 1/4 of Section 14. Ties to other monuments in the two subdivisions yield an uncertainty of 0.2' in the monumented location.

Perry E. Jones 7/25/03

**CORNER RECORD
WARRICK COUNTY**



DESCRIPTION :

NW CORNER NE¹/₄ NE¹/₄

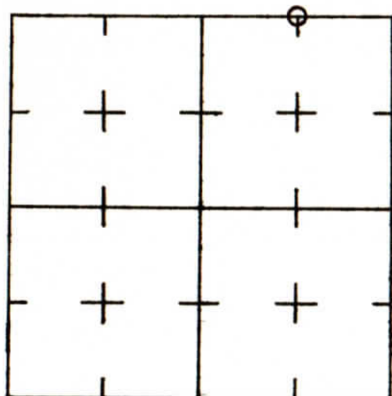
SECTION 14, T. 6 S. R. 9 W.

2nd PRINCIPLE MERIDIAN

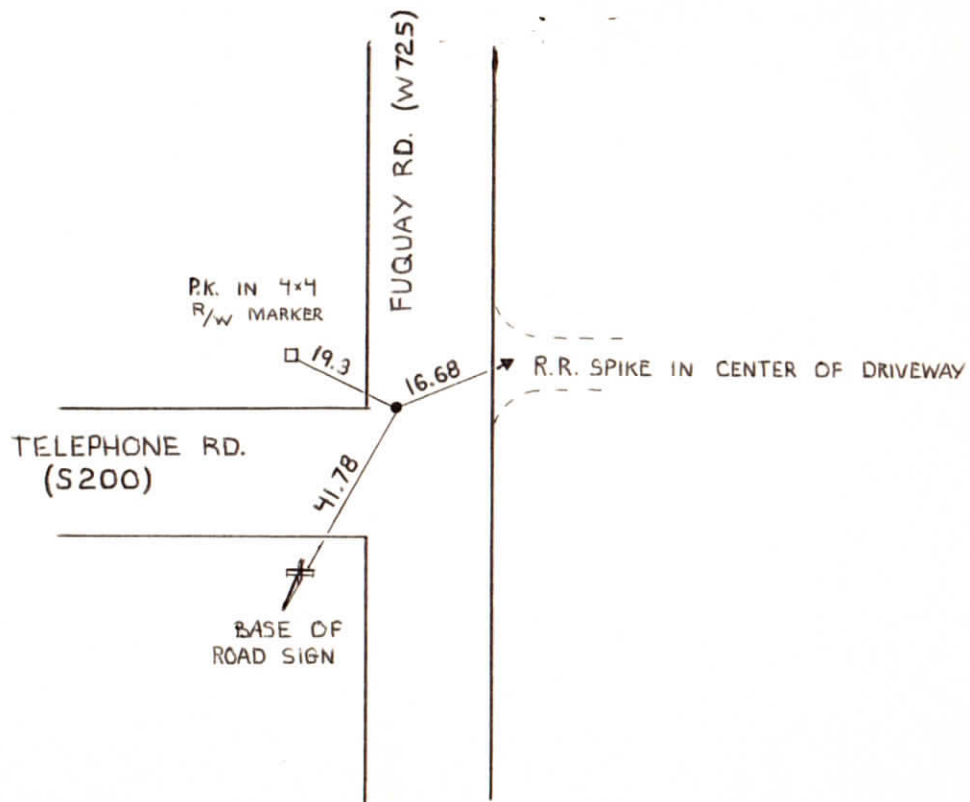
WARRICK COUNTY SURVEYOR

MICHAEL IRVIN

INDICATE CORNER REFERENCED



DESCRIBE CORNER REFERENCED



STATE PLANE COORDINATE DATA

INDIANA ZONE: WEST

X _____

Y _____

ESTABLISHED BY:

APPROVED BY *NOT VERIFIED*

DATE
7-3-73

REFERENCED BY:

DATE

00047

NW cor NE $\frac{1}{4}$ NE $\frac{1}{4}$ sec 14 T6S R9W
SW cor SE $\frac{1}{4}$ SE $\frac{1}{4}$ sec 11 T6S R9W

Type Monument: I.P. (existing)

Date referenced: 7-3-73

referenced by: SWC ✓

CORNER RECORD
WARRICK COUNTY



DESCRIPTION:

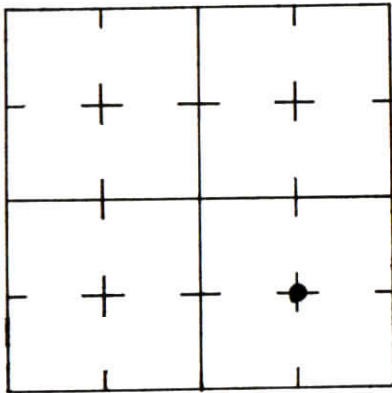
SW CORNER NE¹/₄ SE¹/₄

SECTION 14, T. 6 S. R. 9 W.

2nd PRINCIPLE MERIDIAN

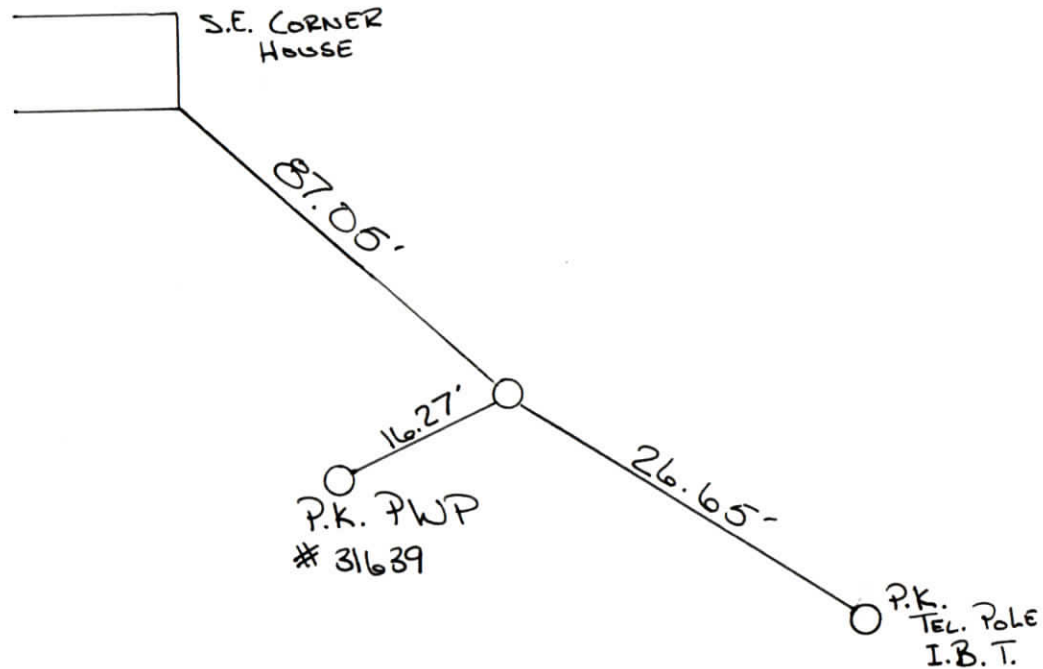
WARRICK COUNTY SURVEYOR
KARAN HARGRAVE-BARNHILL

INDICATE CORNER REFERENCED



DESCRIBE CORNER REFERENCED

PARADISE VIEW



STATE PLANE COORDINATE DATA

INDIANA ZONE: WEST

X _____

Y _____

ESTABLISHED BY:

APPROVED BY

DATE

REFERENCED BY:

DATE

WILLIAM Y. BEVINS

9-8-97

CORNER RECORD
WARRICK COUNTY

DESCRIPTION :

SW CORNER NE 1/4 SE 1/4

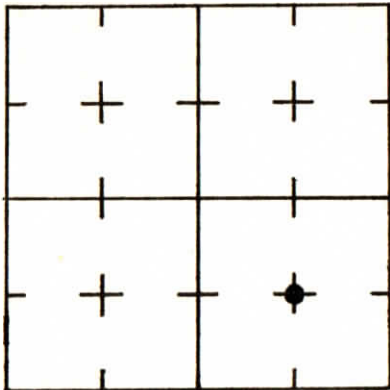
SECTION 14, T. 6 S. R. 9 W.

2nd PRINCIPAL MERIDIAN

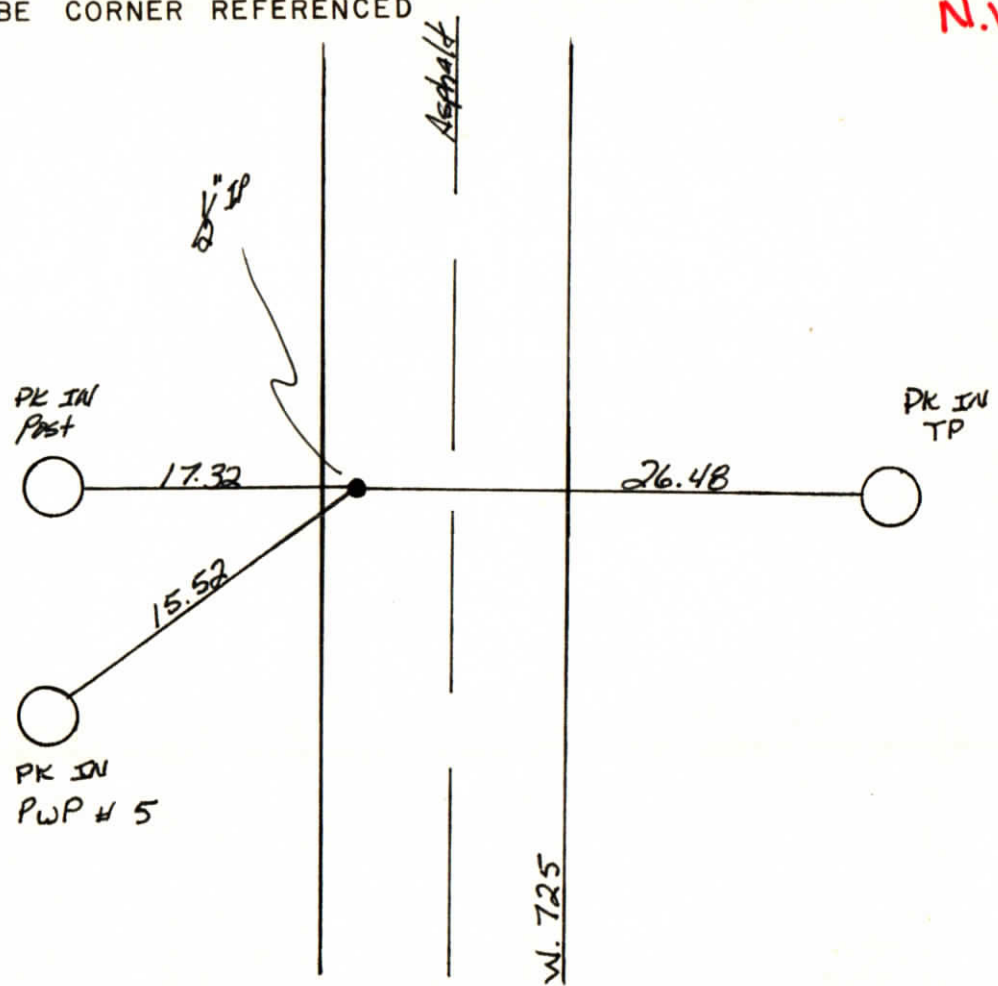
WARRICK COUNTY SURVEYOR
MICHAEL F. FELDBUSCH, L.S.



INDICATE CORNER REFERENCED



DESCRIBE CORNER REFERENCED



STATE PLANE COORDINATE DATA

INDIANA ZONE: WEST

X _____

Y _____

ESTABLISHED BY:

APPROVED BY

DATE

REFERENCED BY:

DATE

Ang Beck

6-2-83

CORNER RECORD
WARRICK COUNTY



DESCRIPTION:

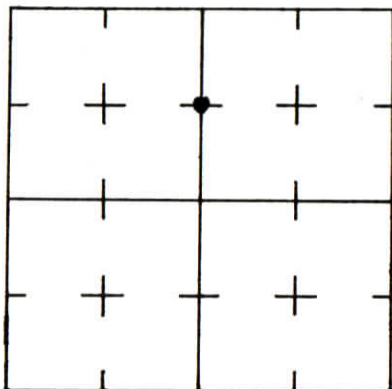
NE CORNER SE 1/4 NW 14

SECTION 14, T. 6 S. R. 9 W.

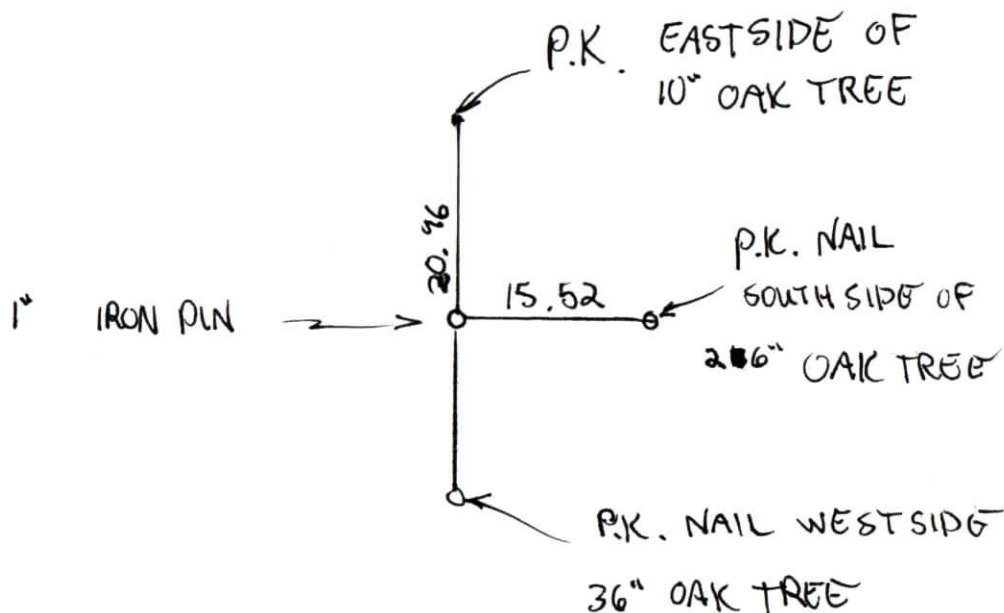
2nd PRINCIPLE MERIDIAN

WARRICK COUNTY SURVEYOR
KARAN HARGRAVE-BARNHILL

INDICATE CORNER REFERENCED



DESCRIBE CORNER REFERENCED



STATE PLANE COORDINATE DATA

INDIANA ZONE: WEST

X _____

Y _____

ESTABLISHED BY:

APPROVED BY

DATE

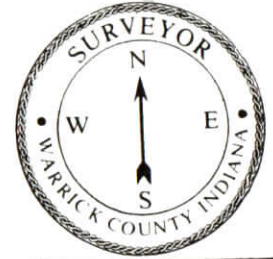
REFERENCED BY:

DATE

SAM BIGGERSTAFF

NOV 18, 1986

CORNER RECORD
WARRICK COUNTY



DESCRIPTION :

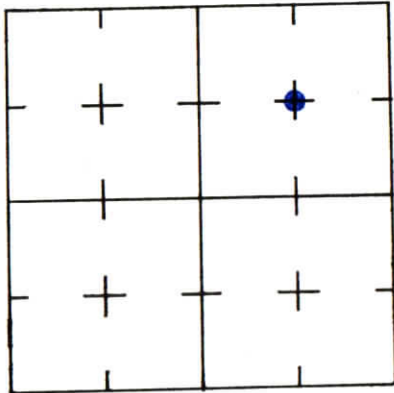
NE CORNER S^W 1/4 NE 1/4

SECTION 14, T. 6 S. R. 9 W.

2nd PRINCIPLE MERIDIAN

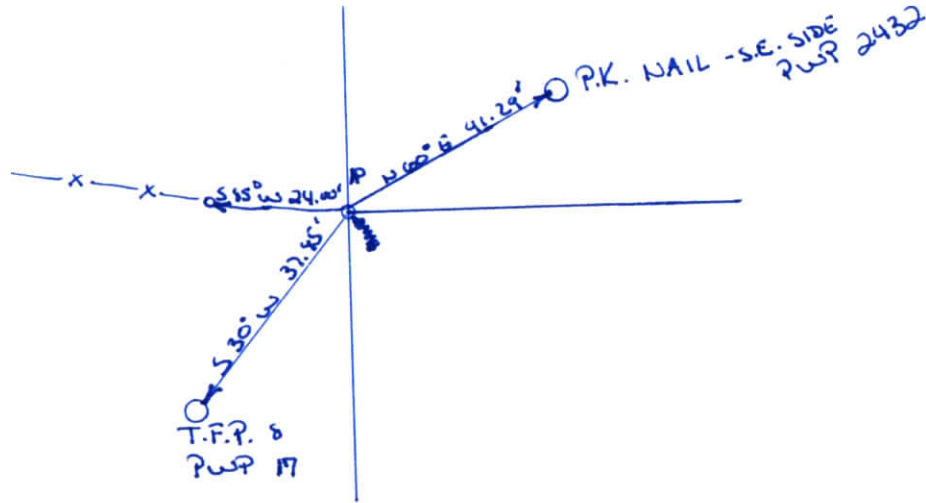
WARRICK COUNTY SURVEYOR
KARAN HARGRAVE-BARNHILL

INDICATE CORNER REFERENCED



DESCRIBE CORNER REFERENCED

CASTLE HILLS SUB. Part 3



STATE PLANE COORDINATE DATA

INDIANA ZONE: WEST

X _____

Y _____

ESTABLISHED BY:

APPROVED BY

DATE

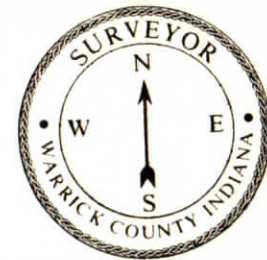
REFERENCED BY:

DATE


ALVIN L. PAUL

10-20-84

**CORNER RECORD
WARRICK COUNTY**

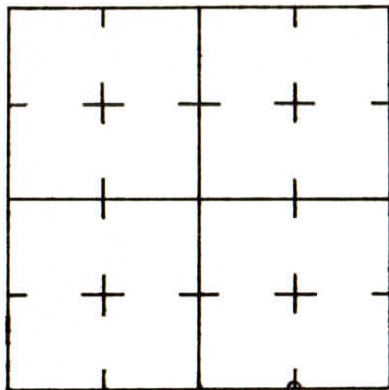


DESCRIPTION :

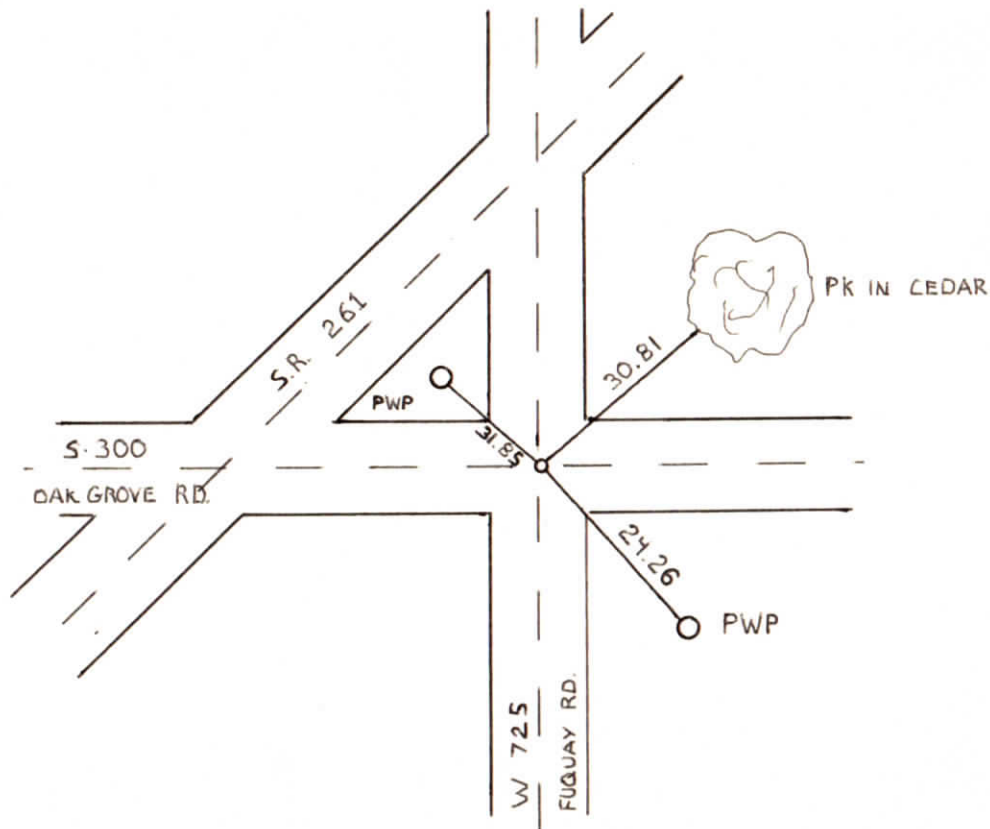
SW CORNER  SE^{1/4} SE^{1/4}
SECTION 14, T. 6 S. R. 9 W.
2nd PRINCIPLE MERIDIAN

**WARRICK COUNTY SURVEYOR
MICHAEL IRVIN**

INDICATE CORNER REFERENCED



DESCRIBE CORNER REFERENCED



STATE PLANE COORDINATE DATA

INDIANA ZONE: WEST

X _____

Y _____

ESTABLISHED BY:

APPROVED BY

DATE

REFERENCED BY:

G.B.

DATE

9-12-84

CORNER RECORD
WARRICK COUNTY



DESCRIPTION:

SE CORNER SW¹/₄ SW¹/₄

SECTION 14, T. 6 S. R. 9 W.

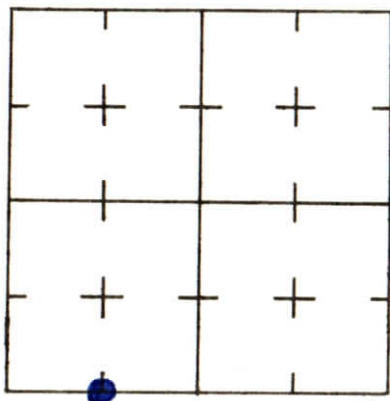
2nd PRINCIPLE MERIDIAN

Cortez Heights Sub. Sec. "B"

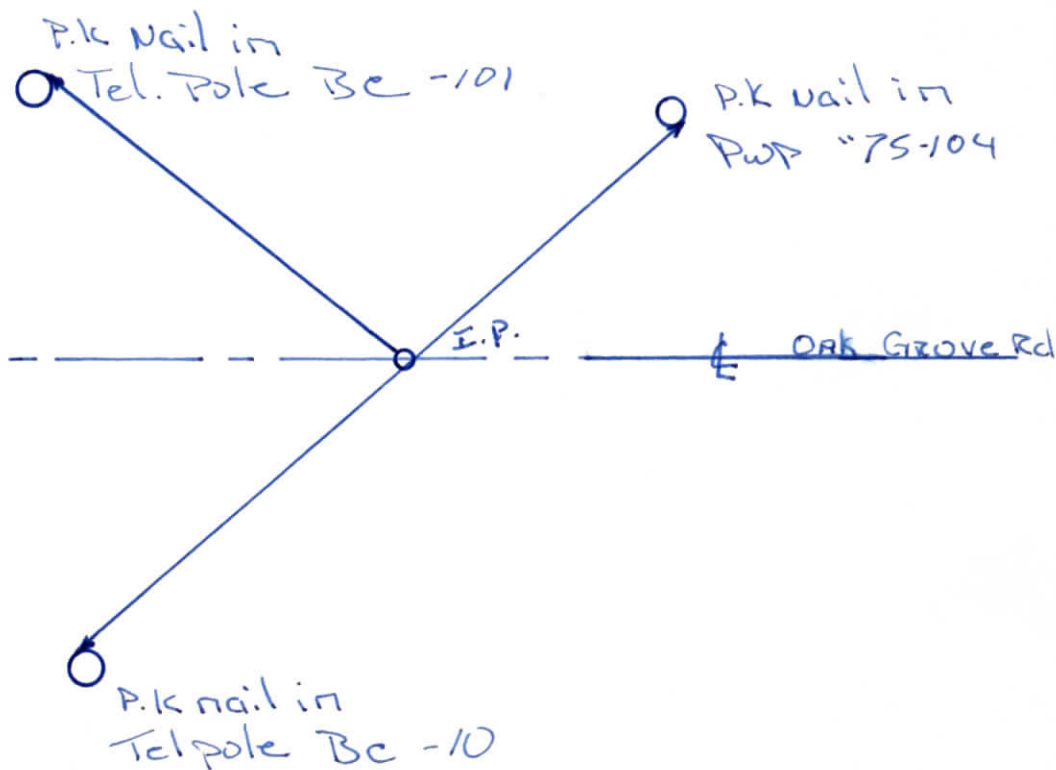
WARRICK COUNTY SURVEYOR

MICHAEL IRVIN

INDICATE CORNER REFERENCED



DESCRIBE CORNER REFERENCED



STATE PLANE COORDINATE DATA

INDIANA ZONE: WEST

X _____

Y _____

ESTABLISHED BY:

APPROVED BY

DATE

REFERENCED BY:

DATE

Albert K. Holte

MAY 9, 1979.

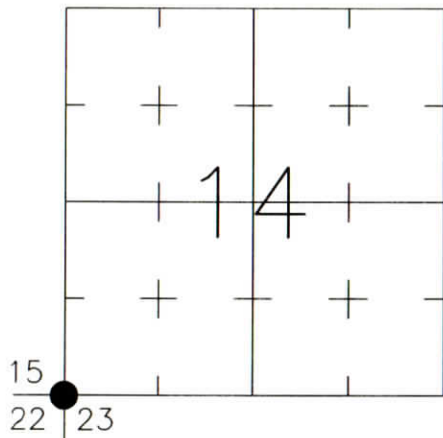
CORNER RECORD WARRICK COUNTY



DESCRIPTION:
 SOUTHWEST CORNER _____
 SECTION 14, T. 6 S., R. 9 W.
 2nd PRINCIPAL MERIDIAN

WARRICK COUNTY SURVEYOR
 KARAN HARGRAVE-BARNHILL

INDICATE CORNER REFERENCED:



STATE PLANE COORDINATE DATA:
 INDIANA WEST ZONE, NAD 83 (1997)
 U.S. SURVEY FEET

X ----

Y ----

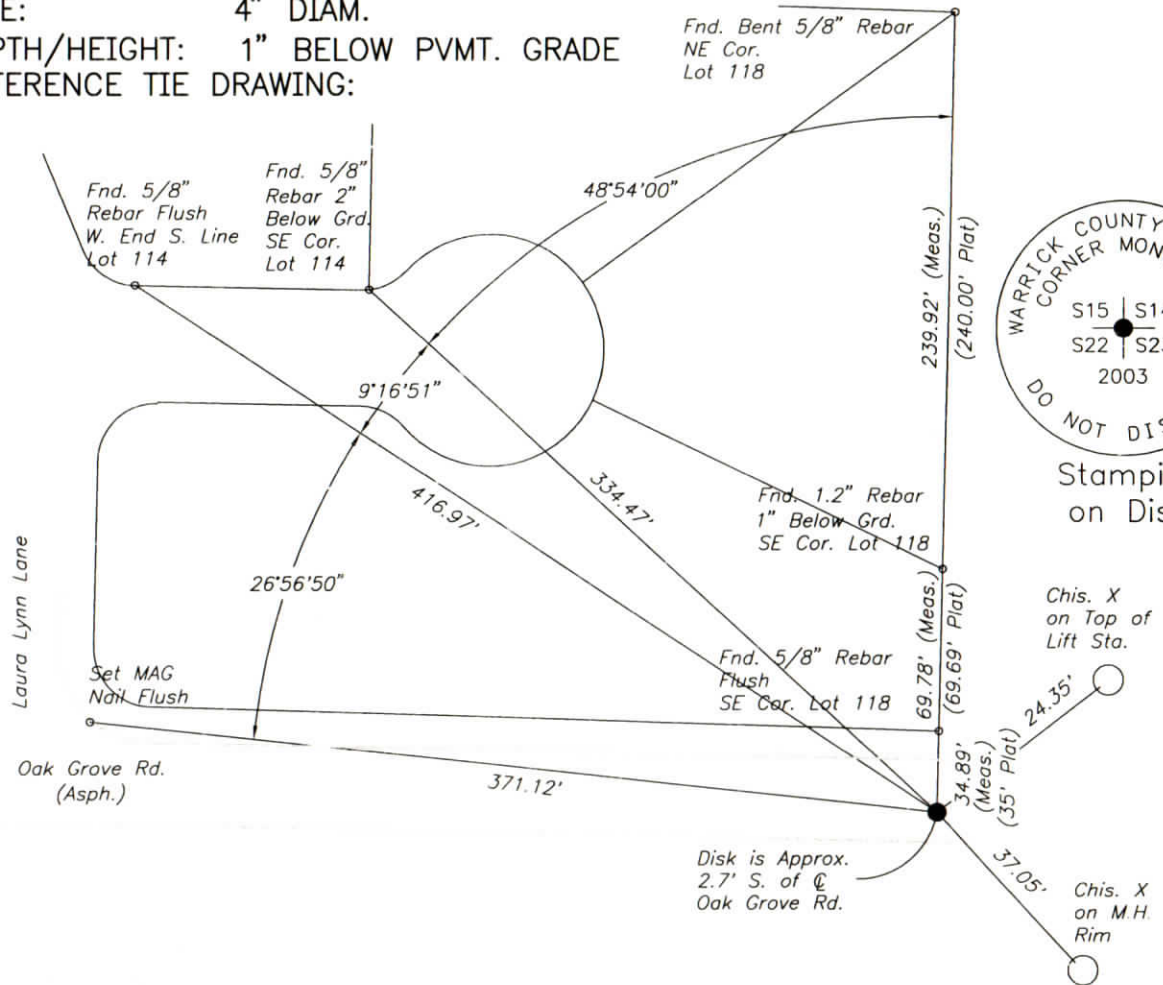
COORDINATES ESTABLISHED BY:

APPROVED BY:

DATE:

MONUMENT TYPE: ALUMINUM DISK
 SIZE: 4" DIAM.
 DEPTH/HEIGHT: 1" BELOW PVMT. GRADE
 REFERENCE TIE DRAWING:

FOR NOTES ON CORNER HISTORY SEE REVERSE.



REFERENCED BY: D.DREES/C.BINKLEY DATE: 9/6/02
 DISK SET 10/27/03 D.DREES/G.M.BURRESS
 APPROVED BY: P.JONES, RLS#9600016 DATE: 10/28/03

CORNER FILE CODE:
 T6S-R9W-N-17

CORNER HISTORY:

CORNER FILE CODE:
T6S-R9W-N-17

ORIGINAL USPLS SURVEY: Corner established by Jacob Fowler, Dec. 20, 1805 "Post".

COUNTY SURVEYOR'S BOOKS: Book 1 P. 125: John C. Frary WCS Nov. 4, 1859 "Stake Set"

OTHER SURVEYS AND PLATS: The 1991 plat of Waterfront at Old Hickory Sec. A shows ties to the corner (monument not identified).

The 1999 plat of Talbert Ridge Phase I shows a PK set.

VERIFICATION OF CORNER POSITION: September, 2002: A MAG nail was found in place. Dimensions to several lot corners in Talbert Ridge Phase I were checked; all agreed within 0.11' with plat dimensions. October 27, 2003: the MAG nail was replaced with the disk shown.

Perry E. Jones 10/28/03

CORNER RECORD WARRICK COUNTY

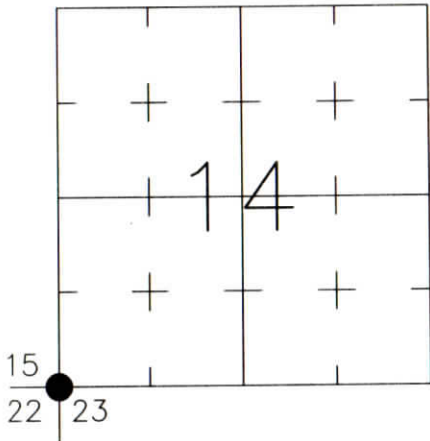


DESCRIPTION:
 SOUTHWEST CORNER _____
 SECTION 14, T. 6 S., R. 9 W.
 2nd PRINCIPAL MERIDIAN

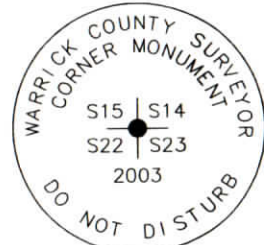
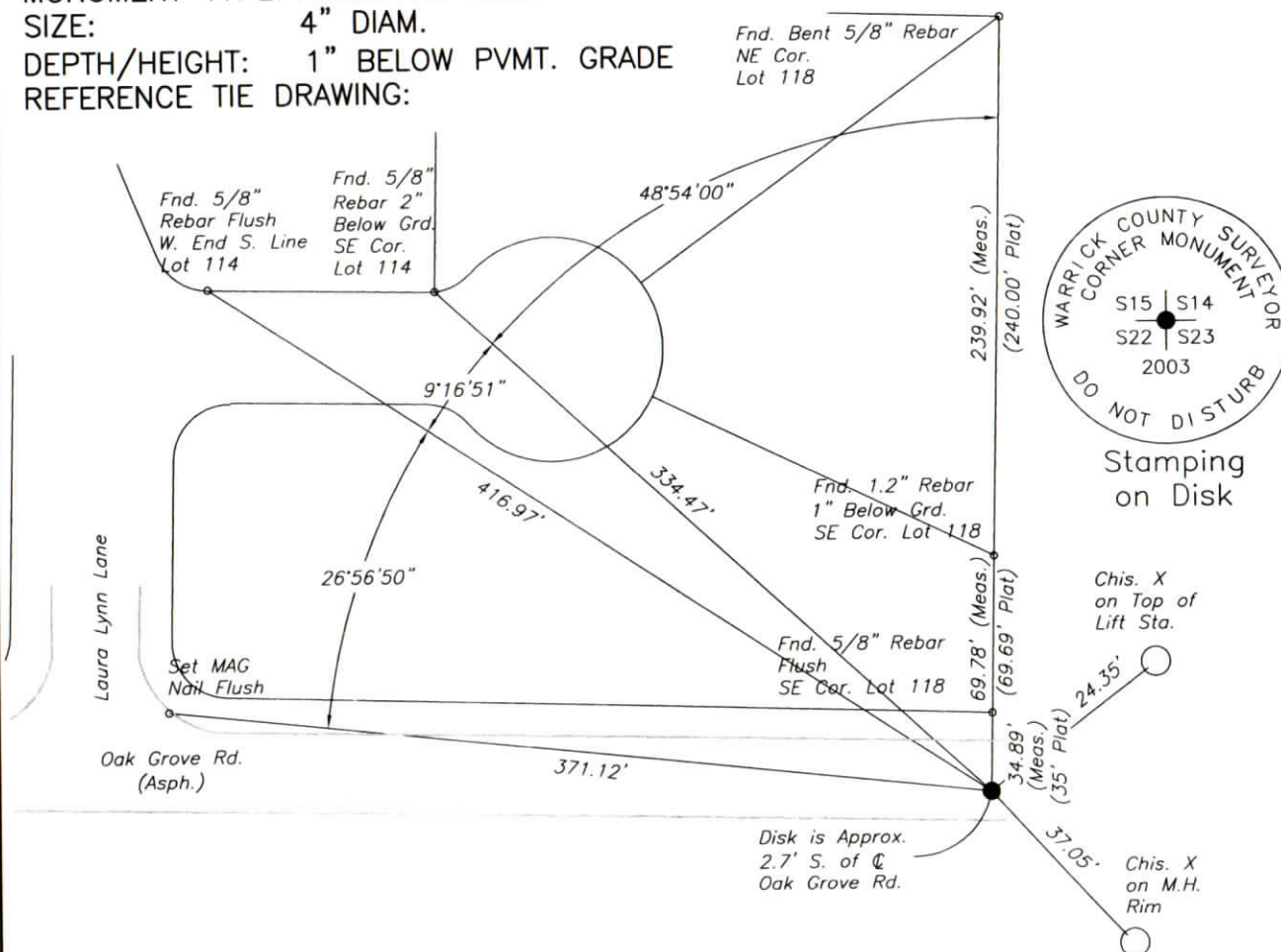
WARRICK COUNTY SURVEYOR
 KARAN HARGRAVE-BARNHILL

FOR NOTES ON CORNER HISTORY SEE REVERSE.

INDICATE CORNER REFERENCED:



MONUMENT TYPE: ALUMINUM DISK
 SIZE: 4" DIAM.
 DEPTH/HEIGHT: 1" BELOW PVMT. GRADE
 REFERENCE TIE DRAWING:



Stamping
on Disk

STATE PLANE COORDINATE DATA:
 INDIANA WEST ZONE, NAD 83 (1997)
 U.S. SURVEY FEET

X ---

Y ---

COORDINATES ESTABLISHED BY:

APPROVED BY:

DATE:

REFERENCED BY: D.DREES/C.BINKLEY DATE: 9/6/02
 DISK SET 10/27/03 D.DREES/G.M.BURRESS
 APPROVED BY: P.JONES, RLS#9600016 DATE: 10/28/03

CORNER FILE CODE:
 T6S-R9W-N-17

CORNER HISTORY:

CORNER FILE CODE:
T6S-R9W-N-17

ORIGINAL USPLS SURVEY: Corner established by Jacob Fowler, Dec. 20, 1805 "Post".

COUNTY SURVEYOR'S BOOKS: Book 1 P. 125: John C. Frary WCS Nov. 4, 1859 "Stake Set"

OTHER SURVEYS AND PLATS: The 1991 plat of Waterfront at Old Hickory Sec. A shows ties to the corner (monument not identified).

The 1999 plat of Talbert Ridge Phase I shows a PK set.

VERIFICATION OF CORNER POSITION: September, 2002: A MAG nail was found in place. Dimensions to several lot corners in Talbert Ridge Phase I were checked; all agreed within 0.11' with plat dimensions. October 27, 2003: the MAG nail was replaced with the disk shown.

Perry E. Jones 10/28/03

CORNER RECORD
WARRICK COUNTY

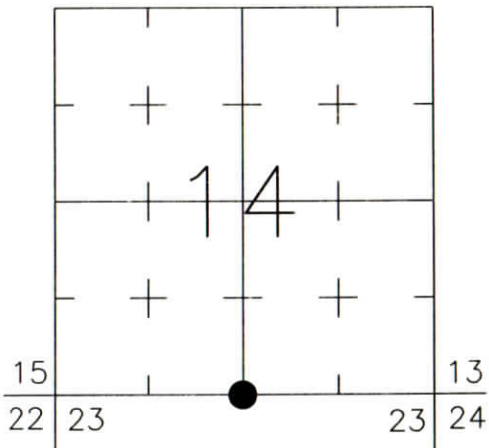


DESCRIPTION:
SOUTHWEST CORNER SOUTHEAST QUARTER
SECTION 14, T. 6 S., R. 9 W.
2nd PRINCIPAL MERIDIAN

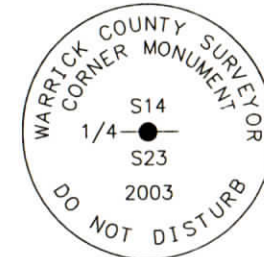
WARRICK COUNTY SURVEYOR
KARAN HARGRAVE-BARNHILL

FOR NOTES ON CORNER HISTORY SEE REVERSE.

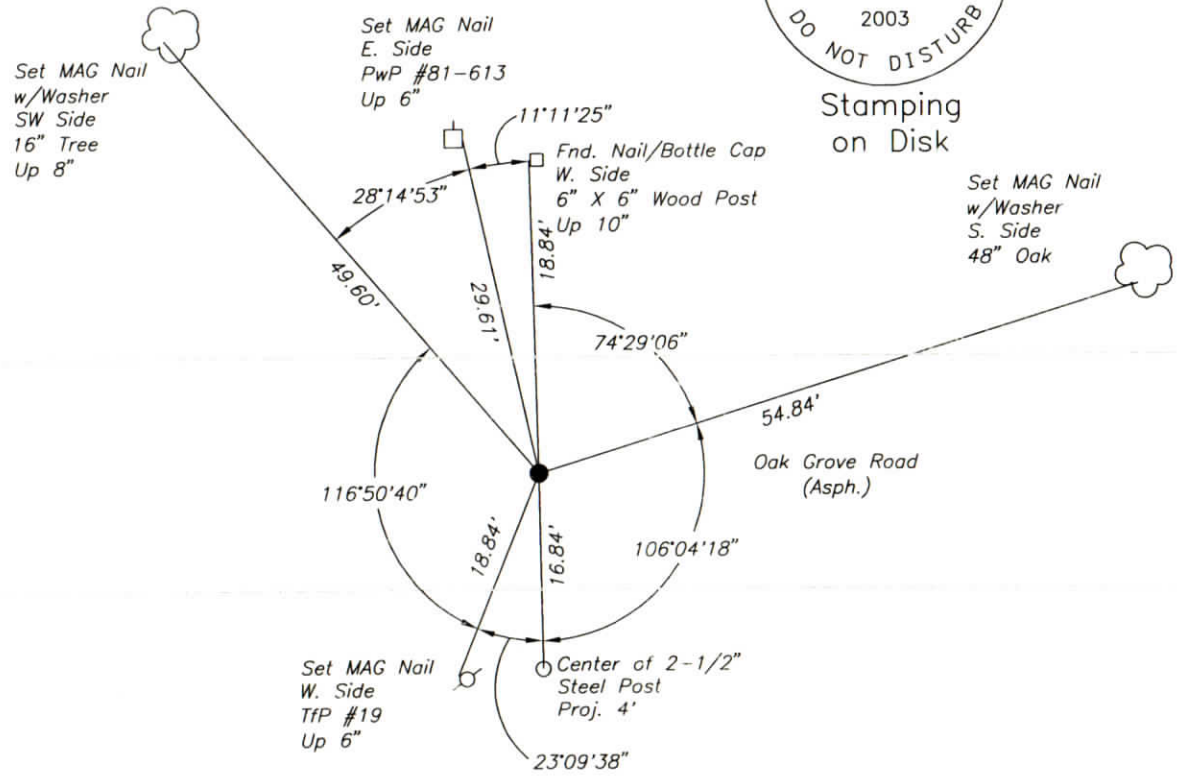
INDICATE CORNER REFERENCED:



MONUMENT TYPE: ALUMINUM DISK
SIZE: 4" DIAM.
DEPTH/HEIGHT: 2" BELOW PVMT. GRADE
REFERENCE TIE DRAWING:



Stamping
on Disk



STATE PLANE COORDINATE DATA:
INDIANA WEST ZONE, NAD 83 (1997)
U.S. SURVEY FEET

X ---

Y ---

COORDINATES ESTABLISHED BY:

APPROVED BY:

DATE:

REFERENCED BY: D.DREES/C.BINKLEY DATE: 9/6/02
DISK SET 10/27/03 D.DREES/G.M.BURRESS
APPROVED BY: P.JONES, RLS#9600016 DATE: 10/28/03

CORNER FILE CODE:
T6S-R9W-N-19

CORNER HISTORY:

CORNER FILE CODE:
T6S-R9W-N-19

ORIGINAL USPLS SURVEY: Corner established by Jacob Fowler, Dec. 21(?), 1805 "Post".

COUNTY SURVEYOR'S BOOKS: Book 1 P. 21: Isaac Adams WCS Dec. 7, 1853 (Mon. not identified)

Book 2 P. 45: O.B.Pasco WCS May 5, 1886 "S. Stone marked S 23"

Book 4 P. 5: C. Warren Abbott WCS Jan. 28, 1946 "Iron Pin" (@ old estab. Fence to south, iron pins set 666.4'N, 66'E, and 132'E)

OTHER SURVEYS AND PLATS: "Corner Record" card shows a 1973 reference (monument not identified).

An Exempt Division by Danny K. Leek dated 5/11/93 shows a 5/8" iron rod.

1994 INDOT survey (K.E. Jackson) tied in and referenced a 5/8" rebar.

Location Control Route Survey for S.R. 261 by Alvin A. Paul (Doc. 1999R-007461) tied in and referenced a boat spike 6" below grade marking the corner (dimensions to corners east and west matched INDOT survey and D. Leek survey within 0.06').

VERIFICATION OF CORNER POSITION: September, 2002: A 5/8" rebar, with the top 1" bent, was found in place, consistent with reference ties from the 1994 K.E. Jackson route survey for INDOT. October 27, 2003: the bent rebar was replaced with the disk shown.

Perry E. Jones 10/28/03