

CORNER RECORD
WARRICK COUNTY

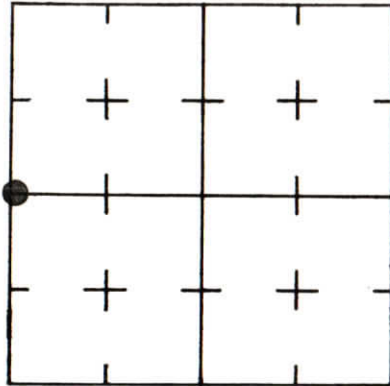
DESCRIPTION :

SW CORNER W/2 SE/4 NW/4
SECTION 1, T. 6 S. R. 9 W.
2nd PRINCIPLE MERIDIAN

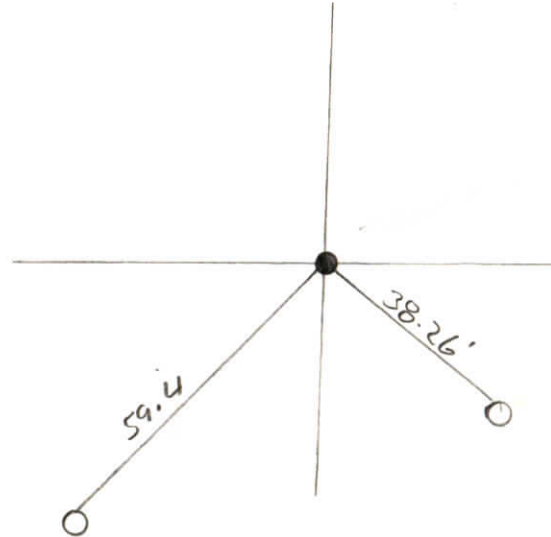


WARRICK COUNTY SURVEYOR
MICHAEL IRVIN

INDICATE CORNER REFERENCED



DESCRIBE CORNER REFERENCED



STATE PLANE COORDINATE DATA

INDIANA ZONE: WEST

X _____

Y _____

ESTABLISHED BY:

APPROVED BY

DATE

REFERENCED BY:

DATE

NOT Verified

OCT 13th 1993

CORNER RECORD
WARRICK COUNTY

DESCRIPTION:

NE CORNER SW¹/₄ SE¹/₄

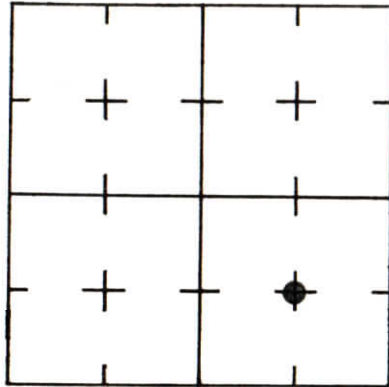
SECTION 1, T. 4 S. R. 9 W.

2nd PRINCIPLE MERIDIAN

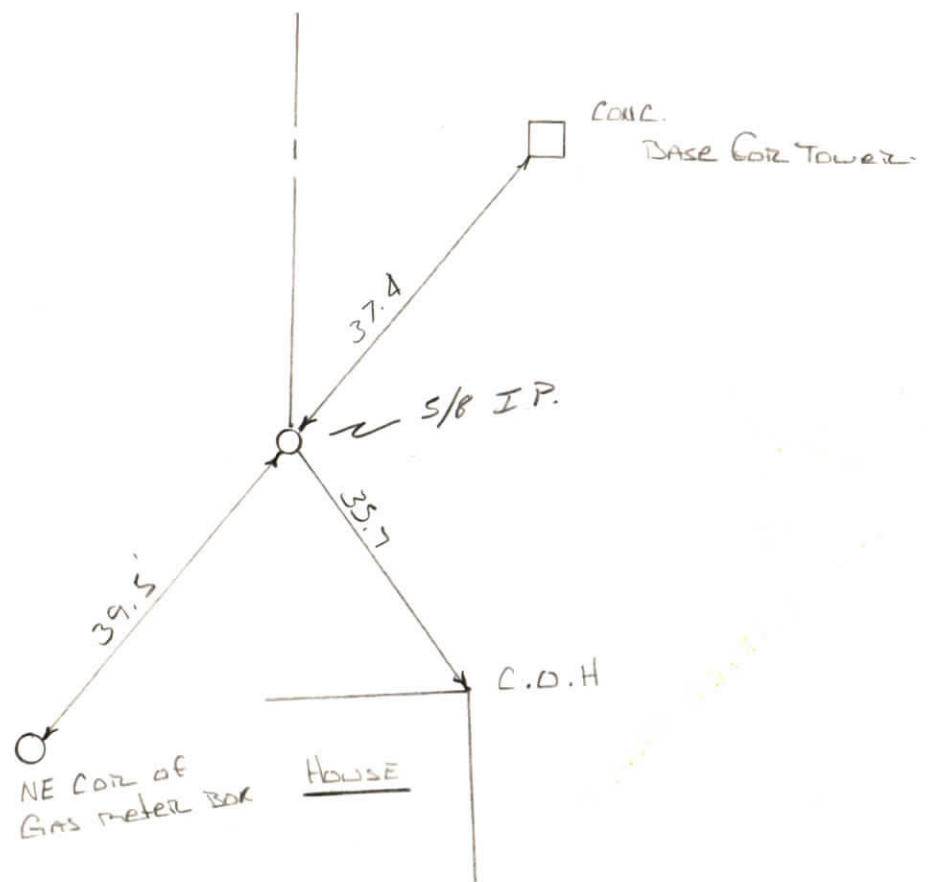
WARRICK COUNTY SURVEYOR
MICHAEL IRVIN



INDICATE CORNER REFERENCED



DESCRIBE CORNER REFERENCED



STATE PLANE COORDINATE DATA

INDIANA ZONE: WEST

X _____

Y _____

ESTABLISHED BY:

APPROVED BY

DATE

REFERENCED BY:

DATE

Elmo Dockery

Aug 11 1993

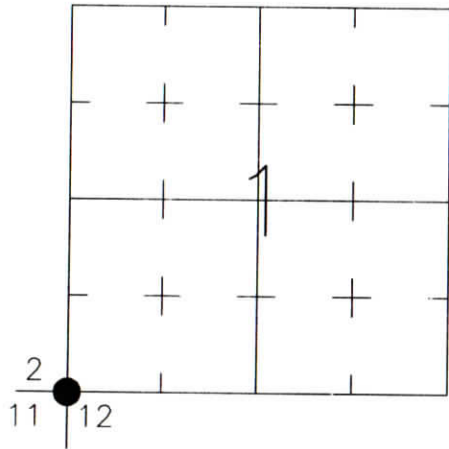
CORNER RECORD WARRICK COUNTY



DESCRIPTION:
 SOUTHWEST CORNER _____
 SECTION 1, T. 6 S., R. 9 W.
 2nd PRINCIPAL MERIDIAN

WARRICK COUNTY SURVEYOR
 KARAN HARGRAVE-BARNHILL

INDICATE CORNER REFERENCED:



STATE PLANE COORDINATE DATA:
 INDIANA WEST ZONE, NAD 83 (1997)
 U.S. SURVEY FEET

X _____
 Y _____

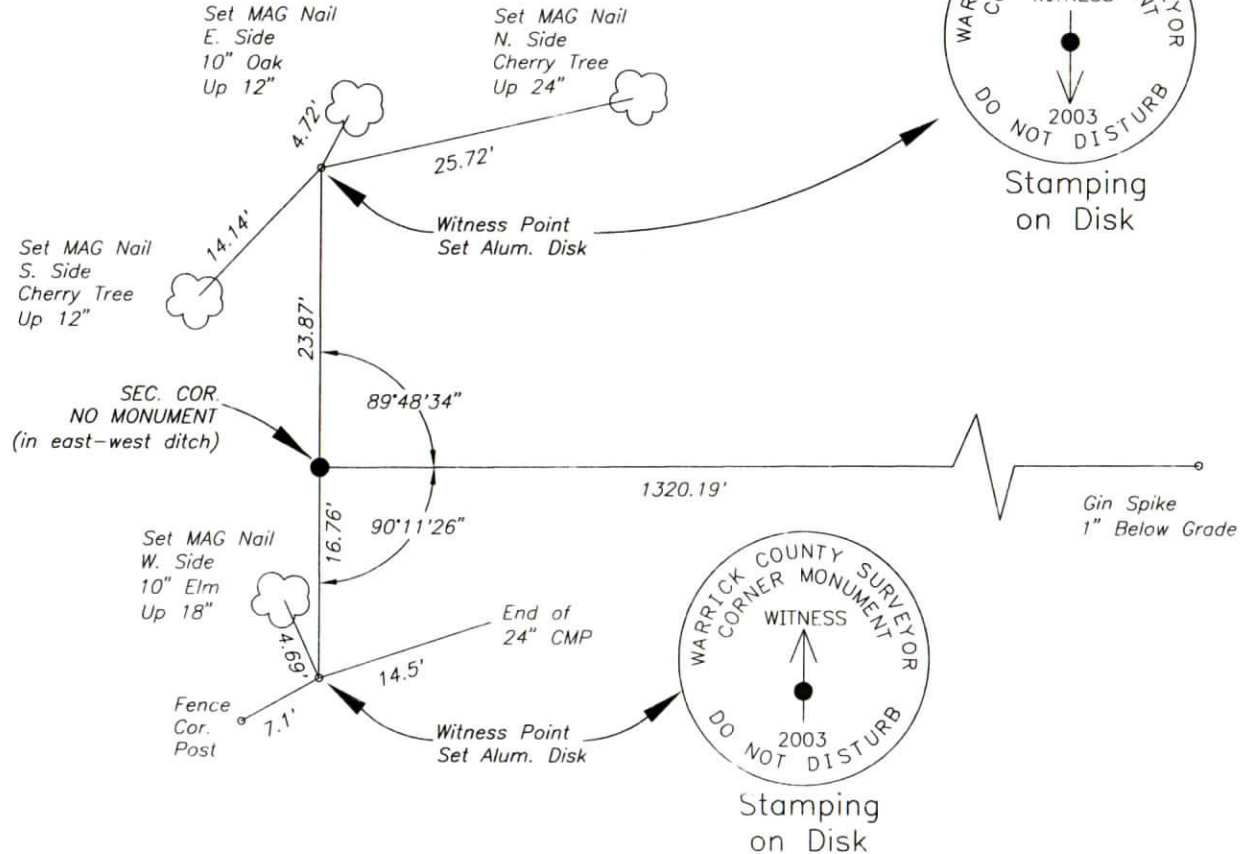
COORDINATES ESTABLISHED BY:

APPROVED BY:

DATE:

MONUMENT TYPE: NO MON. (WITNESS POINTS)
 SIZE:
 DEPTH/HEIGHT:
 REFERENCE TIE DRAWING:

FOR NOTES ON CORNER HISTORY SEE REVERSE.



REFERENCED BY: D.DREES/K.DILGER

DATE: 6/2/03

APPROVED BY: P.JONES, RLS#9600016

DATE: 7/25/03

CORNER FILE CODE:
 T6S-R9W-E-21

CORNER HISTORY:

CORNER FILE CODE:
T6S-R9W-E-21

ORIGINAL USPLS SURVEY: Corner established by Jacob Fowler, Dec. 22, 1805 "Post".

COUNTY SURVEYOR'S BOOKS: Book 1 P. 42: W.B.Wright WCS March 12, 1855 (Mon. not identified).

Book 1 P. 187: 1877 O.B.Pasco (Mon. not identified, stones set on section line to South)

OTHER SURVEYS AND PLATS: No surveys or plats were found which identify the section corner.

VERIFICATION OF CORNER POSITION: June, 2003; the section corner location was re-established as follows: rebar found marking the SW corner of Squire Estates Part One and marking the SW corner of Lot 8 of said subdivision were used to re-establish the west line of the subdivision. The NW corner of the subdivision was calculated by projecting this line northward the record distance of 142.43' along the west line of Lot 8. The north line of the NW 1/4 NW 1/4 of Section 12 was re-established using the calculated NW corner of the subdivision and a gin spike found marking the NE corner of said 1/4-1/4 section. This line was then projected westward from the subdivision the record distance of 398.82' taken from Deed File 3, Card 7648. An uncertainty of approximately 2' north-south and 1' east-west results from discrepancies between other dimensions from DF 3 Card 7648 and the measured location of a small axle found marking the SW corner of the tract. The re-established corner position falling in a ditch, the witness monuments shown were set on the northern and southern banks.

Perry E. Jones 7/25/03

CORNER RECORD
WARRICK COUNTY



DESCRIPTION:

NE CORNER NE/4 NW/4

SECTION 1, T. 6 S. R. 9 W.

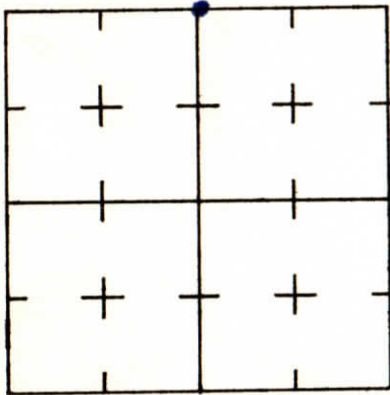
2nd PRINCIPLE MERIDIAN

OLDE PURNUE Sub SEC "A"

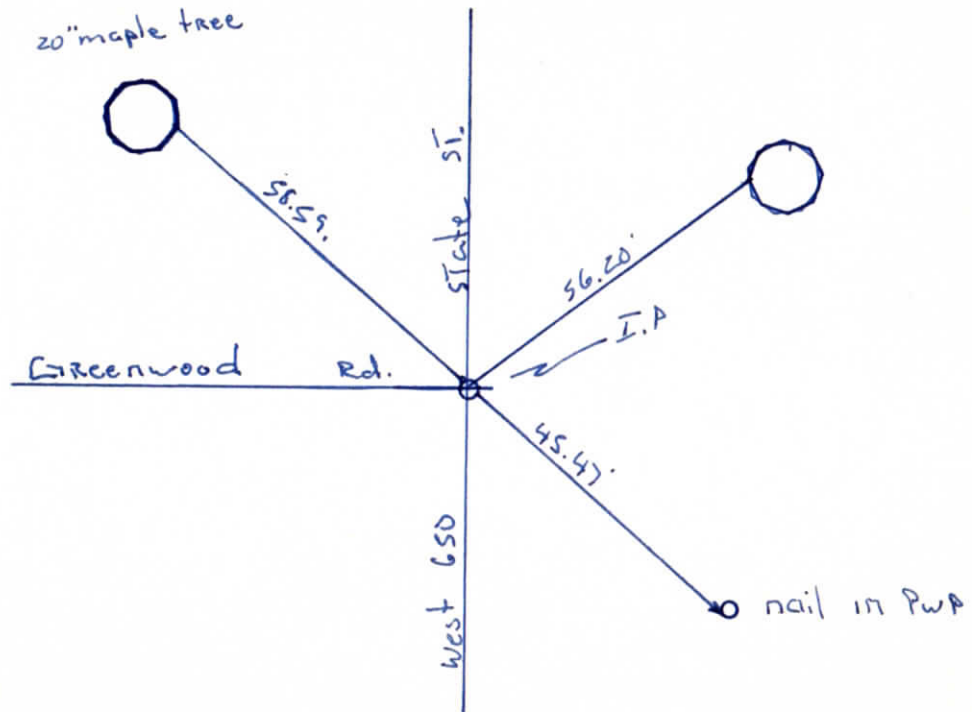
WARRICK COUNTY SURVEYOR

MICHAEL IRVIN

INDICATE CORNER REFERENCED



DESCRIBE CORNER REFERENCED



STATE PLANE COORDINATE DATA

INDIANA ZONE: WEST

X _____

Y _____

ESTABLISHED BY:

APPROVED BY

DATE

REFERENCED BY:

DATE

Elmo D. Dockery

MARCH 14 1984

**CORNER RECORD
WARRICK COUNTY**



DESCRIPTION :

SE CORNER SW¹/₄ NW¹/₄

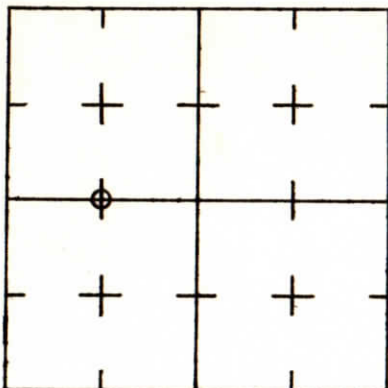
SECTION 1, T. 6 S. R. 9 W.

2nd PRINCIPLE MERIDIAN

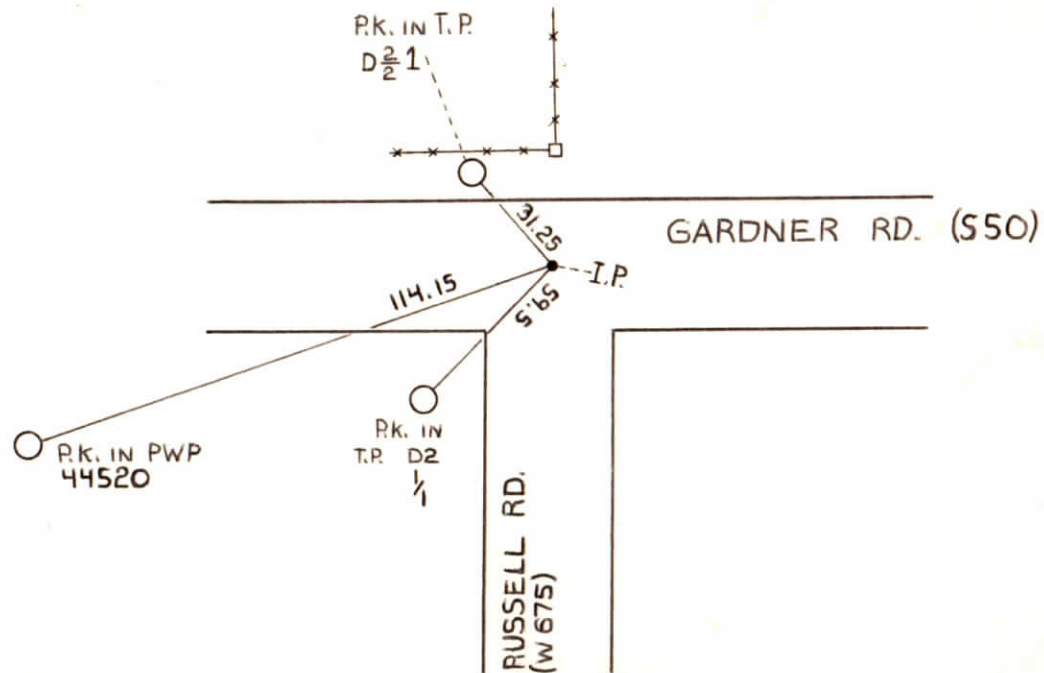
WARRICK COUNTY SURVEYOR

MICHAEL IRVIN

INDICATE CORNER REFERENCED



DESCRIBE CORNER REFERENCED



STATE PLANE COORDINATE DATA

INDIANA ZONE: WEST

X _____

Y _____

ESTABLISHED BY:

APPROVED BY NOT VERIFIED

DATE
6-22-73

REFERENCED BY:

DATE

000038

SE corner SW $\frac{1}{4}$ NW $\frac{1}{4}$ + NE corner NW $\frac{1}{4}$ SW $\frac{1}{4}$
S 1 T 6 S R 9 W

Type of Monument: I.P. (existing)

Date: 6-22-73

referenced by: SWC

CORNER RECORD
WARRICK COUNTY

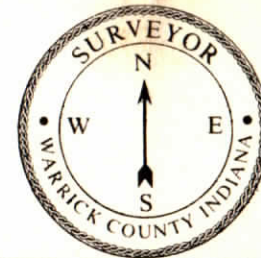
DESCRIPTION:

SW CORNER NW¹/₄

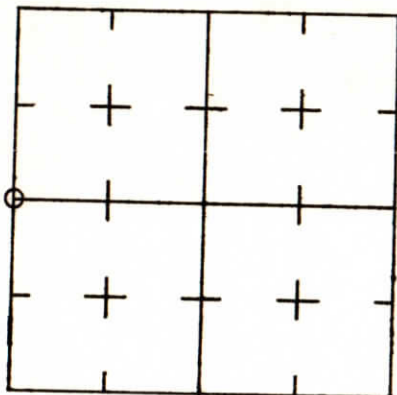
SECTION 1, T. 6 S. R. 9 W.

2nd PRINCIPLE MERIDIAN

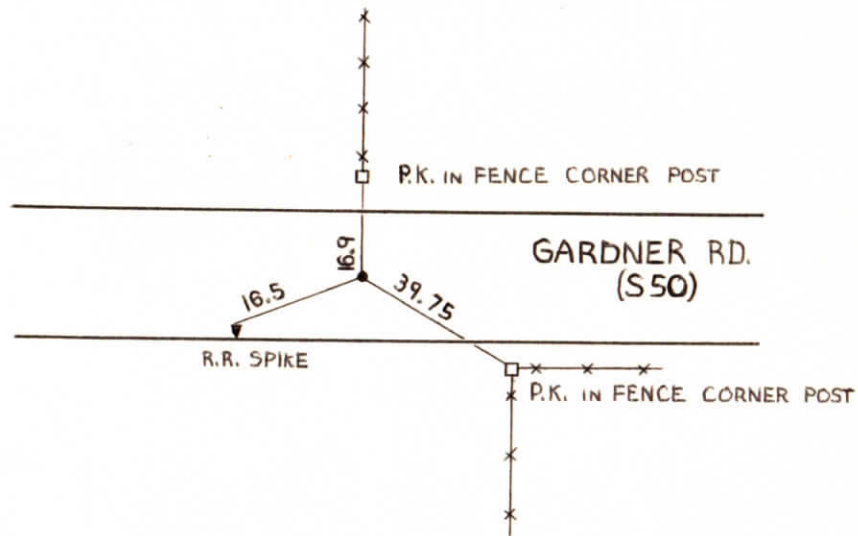
WARRICK COUNTY SURVEYOR
MICHAEL IRVIN



INDICATE CORNER REFERENCED



DESCRIBE CORNER REFERENCED



STATE PLANE COORDINATE DATA

INDIANA ZONE: WEST

X _____

Y _____

ESTABLISHED BY:

APPROVED BY NOT VERIFIED

DATE
6-22-73

REFERENCED BY:

DATE

000039

SW corner NW $\frac{1}{4}$ S1T6sR9w
NE corner SE $\frac{1}{4}$ S2T6sR9w

Type of Monument: I.P.

Date: 6-22-73

referenced by: SWC

**CORNER RECORD
WARRICK COUNTY**



DESCRIPTION :

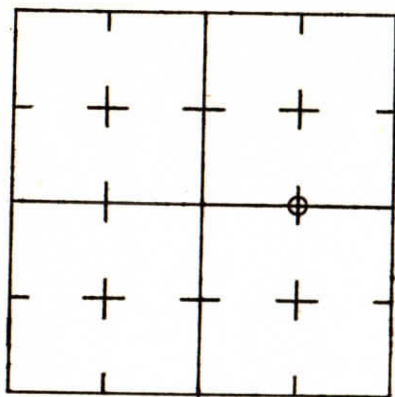
NE CORNER NW¹/₄ SE¹/₄

SECTION 1, T. 6 S. R. 9 W.

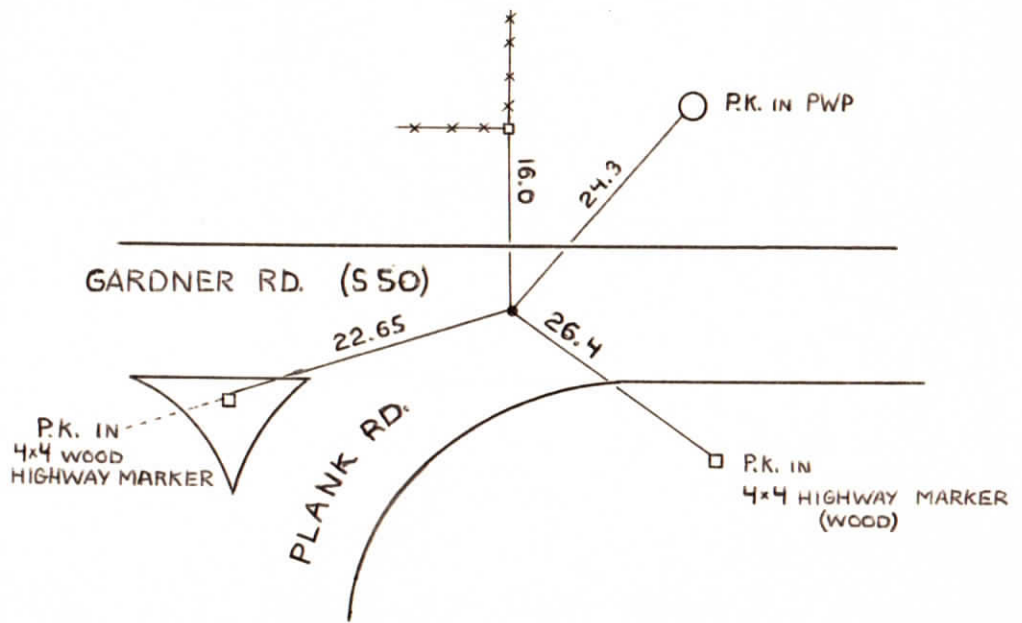
2nd PRINCIPLE MERIDIAN

**WARRICK COUNTY SURVEYOR
MICHAEL IRVIN**

INDICATE CORNER REFERENCED



DESCRIBE CORNER REFERENCED



STATE PLANE COORDINATE DATA

INDIANA ZONE: WEST

X _____

Y _____

ESTABLISHED BY:

APPROVED BY NOT VERIFIED

DATE
6-22-73

REFERENCED BY:

DATE

000040

~~SE corner SE $\frac{1}{4}$ NE $\frac{1}{4}$~~ + NE corner NW $\frac{1}{4}$ SE $\frac{1}{4}$
S 1 T65 R9W

Type of Monument: I.P.

Date: 6-22-73

referenced by: SWC

CORNER RECORD
WARRICK COUNTY



DESCRIPTION:

SW CORNER w/2 SE/4

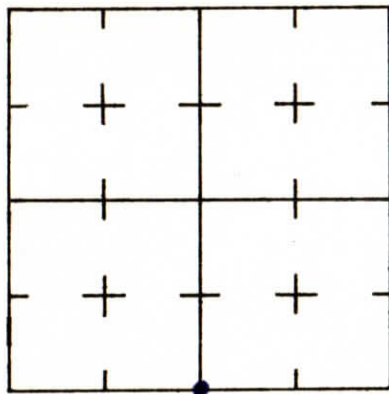
SECTION 1, T. 6 S. R. 9 W.

2nd PRINCIPLE MERIDIAN

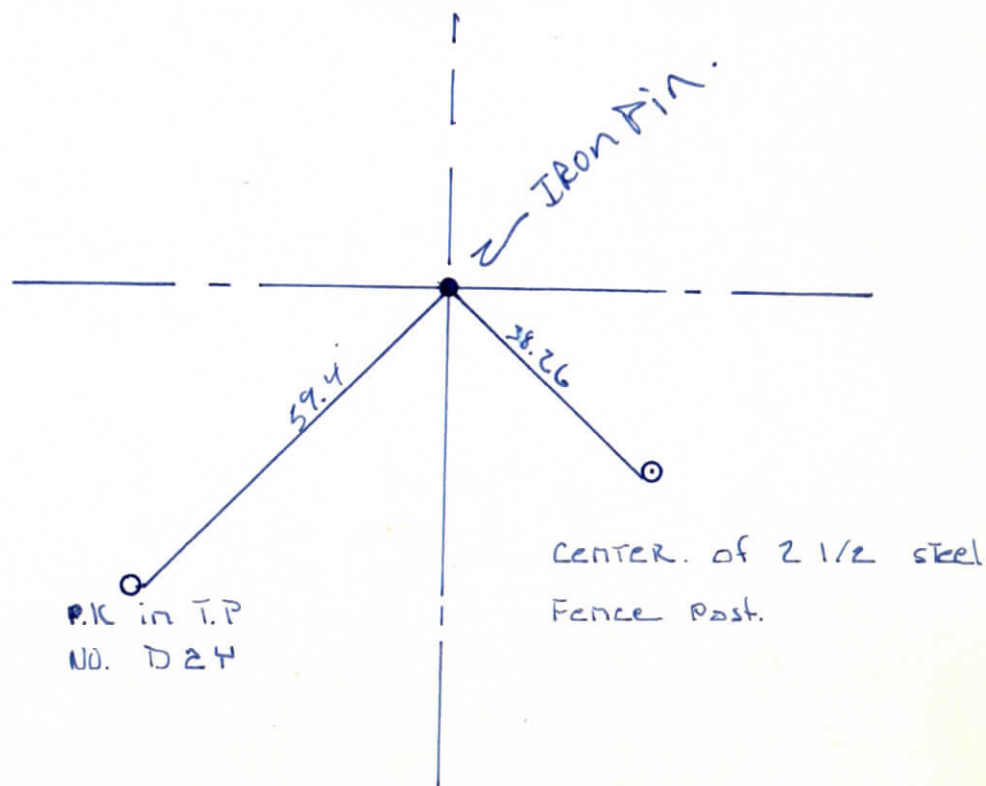
Don Fisher Sub

WARRICK COUNTY SURVEYOR
MICHAEL IRVIN

INDICATE CORNER REFERENCED



DESCRIBE CORNER REFERENCED



STATE PLANE COORDINATE DATA

INDIANA ZONE: WEST

X _____

Y _____

ESTABLISHED BY:

APPROVED BY

DATE

REFERENCED BY:

DATE

Elmo D Dockety

April 13 1983.

CORNER RECORD
WARRICK COUNTY

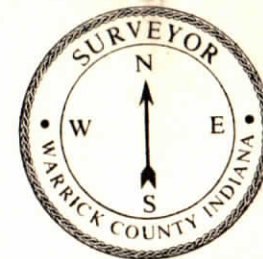
DESCRIPTION: ~~CENTER OF SECTION~~

SE CORNER SE 1/4 NW 1/4

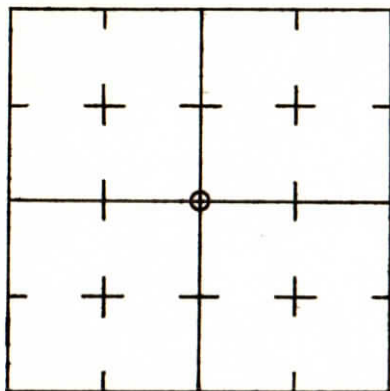
SECTION 1, T. 6 S. R. 9 W.

2nd PRINCIPLE MERIDIAN

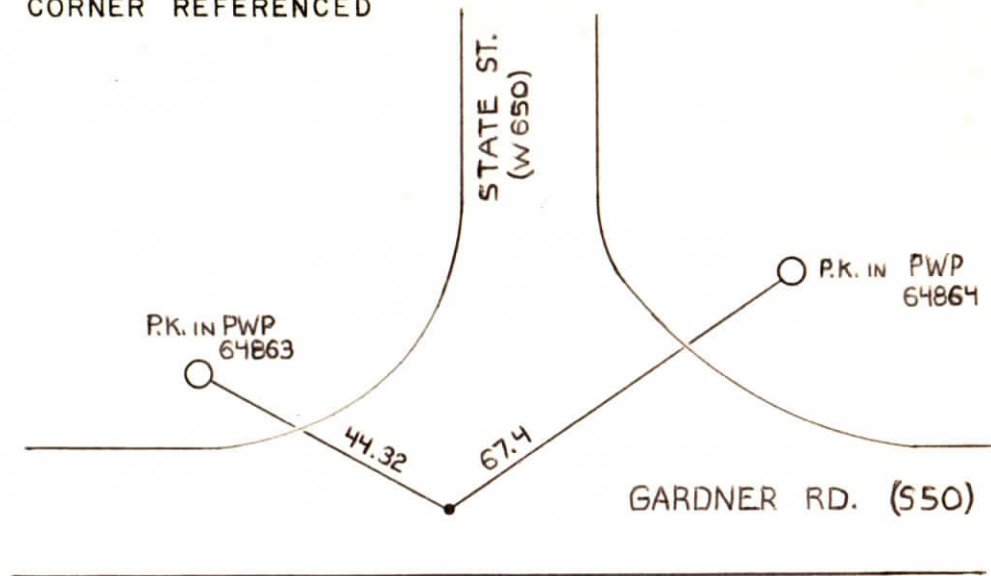
WARRICK COUNTY SURVEYOR
MICHAEL IRVIN



INDICATE CORNER REFERENCED



DESCRIBE CORNER REFERENCED



STATE PLANE COORDINATE DATA

INDIANA ZONE: WEST

X _____

Y _____

ESTABLISHED BY:

APPROVED BY NOT VERIFIED

DATE
6/22/73

REFERENCED BY:

DATE


000037

NE corner SW $\frac{1}{4}$ & SE cor NW $\frac{1}{4}$
SW cor NE $\frac{1}{4}$ & NW cor SE $\frac{1}{4}$ S 1 + 65 R 9w

Type of Monument: I.P. (existing)

Date: 6/22/73

referenced by: SWC

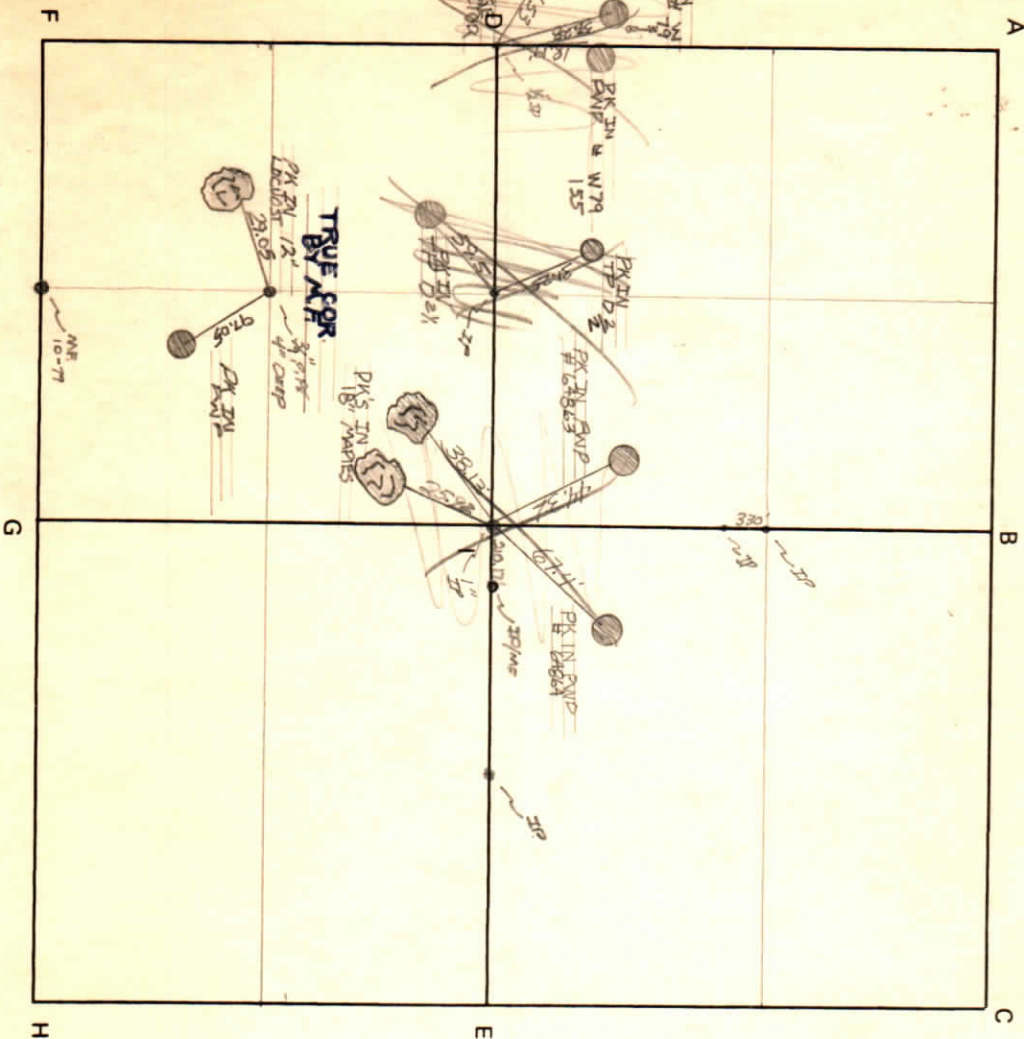




WARRICK COUNTY SURVEYOR
MICHAEL F. FELDBUSCH

Section 1 Township 6 Range 9 2nd P.M.

CORNER CODE SYSTEM
Warrick County



NOTES

I: FND 11/81 ME - REFERENCE
NOT NEEDED AS PIN
WAS READILY FND.

858-3058

MIKE CRAB.

CORNER RECORD
WARRICK COUNTY

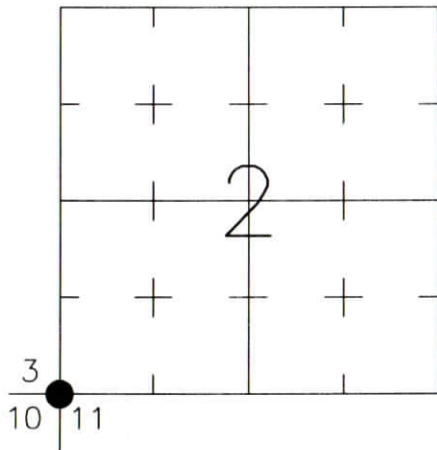


DESCRIPTION:
SOUTHWEST CORNER _____
SECTION 2, T. 6 S., R. 9 W.
2nd PRINCIPLE MERIDIAN

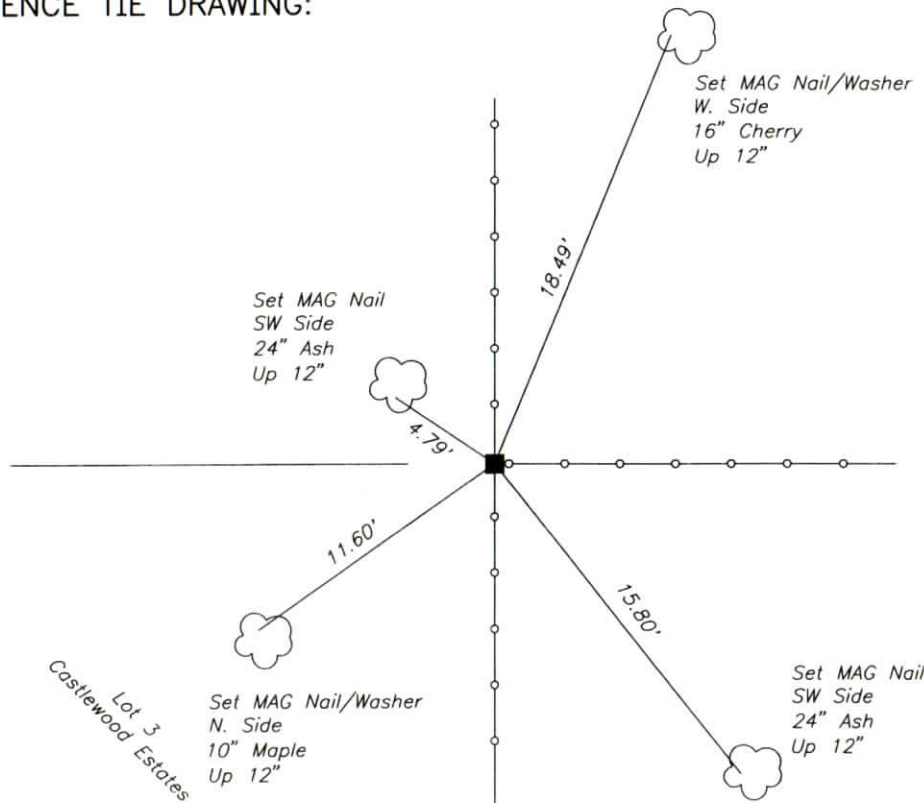
WARRICK COUNTY SURVEYOR
KARAN HARGRAVE-BARNHILL

FOR NOTES ON CORNER HISTORY SEE REVERSE.

INDICATE CORNER REFERENCED:



MONUMENT TYPE: STONE
SIZE: 6" X 10"
DEPTH/HEIGHT: FLUSH
REFERENCE TIE DRAWING:



STATE PLANE COORDINATE DATA:
INDIANA WEST ZONE, NAD 83 (1997)
U.S. SURVEY FEET

X ---

Y ---

COORDINATES ESTABLISHED BY:

APPROVED BY:

DATE:

REFERENCED BY: D.DREES/R.HARLAN

DATE: 9/18/02

APPROVED BY: P.JONES, RLS#9600016

DATE: 9/24/02

CORNER FILE CODE:
T6S-R9W-E-17

CORNER HISTORY:

CORNER FILE CODE:
T6S-R9W-E-17

ORIGINAL USPLS SURVEY: Corner established by Jacob Fowler, Dec. 23, 1805 "Post".

COUNTY SURVEYOR'S BOOKS: Book 1 P. 54: W.B.Wright WCS Sept. 1, 1855 "Stone".

Book 1 P. 243: O.B.Pasco WCS Dec. 18-20, 1865 (Mon. not identified).

Book 3 P. 276: B.C.Samples, Surveyor, Feb. 17, 1931 "Corner stone found in place 4' W of 30" Elm".

OTHER SURVEYS AND PLATS: "Corner Record" card shows reference taken from Amended Plat of Castlewood Estates dated 1987 "found stone".

VERIFICATION OF CORNER POSITION: September, 2002: The stone shown was found in place at an existing fence intersection (fences north, south, and east).

Perry E. Jones 9/24/02

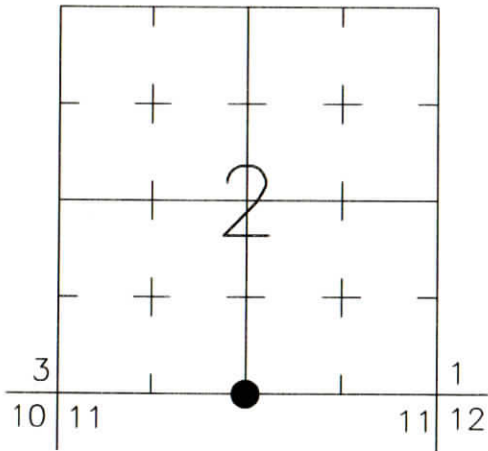
CORNER RECORD
WARRICK COUNTY



DESCRIPTION:
SOUTHWEST CORNER SOUTHEAST QUARTER
SECTION 2, T. 6 S., R. 9 W.
2nd PRINCIPAL MERIDIAN

WARRICK COUNTY SURVEYOR
KARAN HARGRAVE-BARNHILL

INDICATE CORNER REFERENCED:



MONUMENT TYPE: STONE MARKED "1/4 S"
SIZE: 8" X 15"
DEPTH/HEIGHT: FLUSH
REFERENCE TIE DRAWING:

FOR NOTES ON CORNER HISTORY SEE REVERSE.

STATE PLANE COORDINATE DATA:
INDIANA WEST ZONE, NAD 83 (1997)
U.S. SURVEY FEET

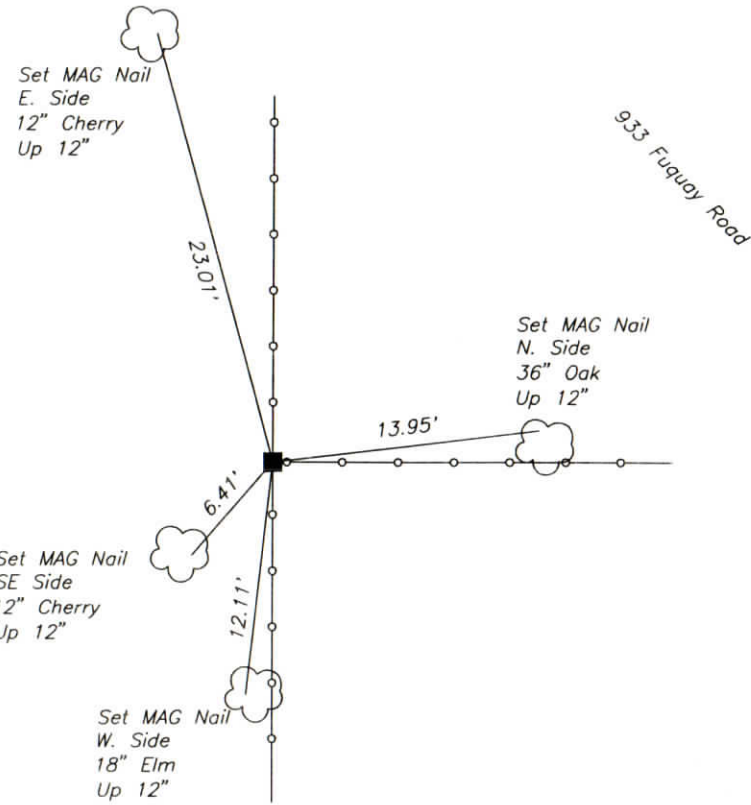
X _____

Y _____

COORDINATES ESTABLISHED BY:

APPROVED BY:

DATE:



REFERENCED BY: D.DREES/R.HARLAN

DATE: 9/18/02

APPROVED BY: P.JONES, RLS#9600016

DATE: 9/24/02

CORNER FILE CODE:
T6S-R9W-E-19

CORNER HISTORY:

CORNER FILE CODE:
T6S-R9W-E-19

ORIGINAL USPLS SURVEY: Corner established by Jacob Fowler, Dec. 24, 1805 "Post".

COUNTY SURVEYOR'S BOOKS: Book 1 P. 54: W.B.Wright WCS Sept. 1, 1855 "Stone"

OTHER SURVEYS AND PLATS: "Corner Code System" card shows an undated reference to a Stone.

VERIFICATION OF CORNER POSITION: September, 2002: The stone shown was found in place at an existing fence intersection (fences north, south, and east).

Perry E. Jones 9/24/02

CORNER RECORD
WARRICK COUNTY



DESCRIPTION:

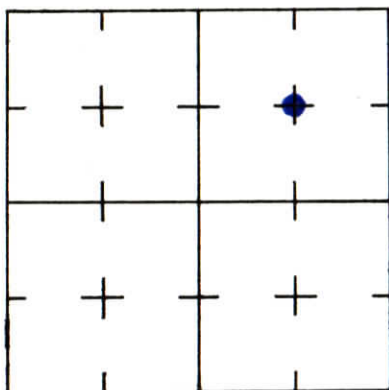
NW CORNER SE 1/4 NE 1/4

SECTION 2, T. 6 S. R. 9 W.

2nd PRINCIPLE MERIDIAN

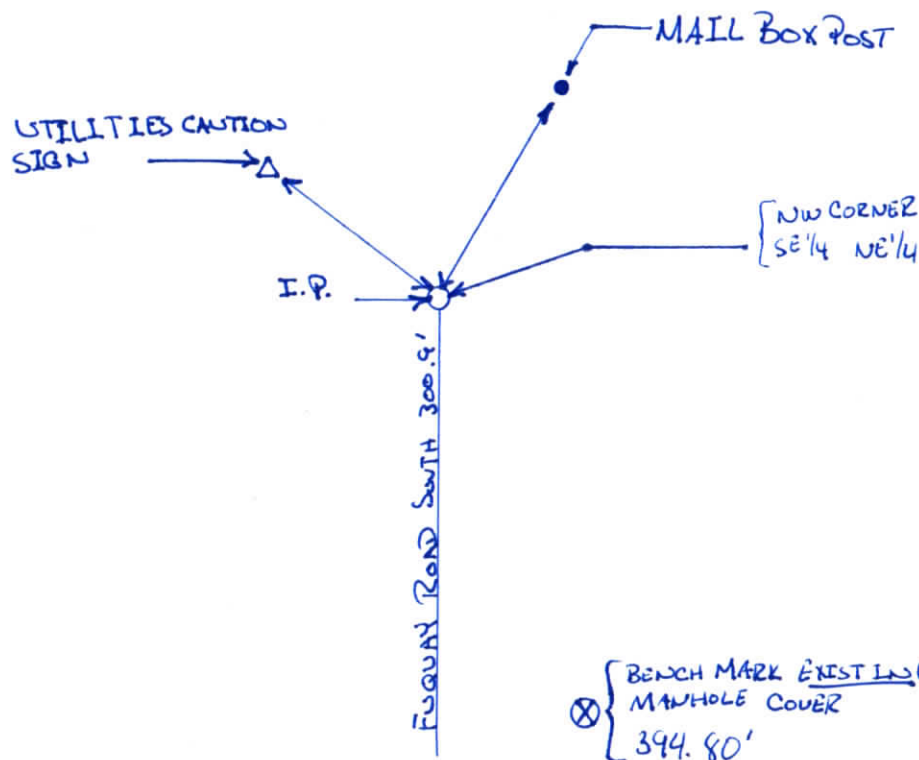
WARRICK COUNTY SURVEYOR
KARAN HARGRAVE-BARNHILL

INDICATE CORNER REFERENCED



DESCRIBE CORNER REFERENCED

HOUCHIN HEIGHTS
SECTION "A"



STATE PLANE COORDINATE DATA

INDIANA ZONE: WEST

X _____

Y _____

ESTABLISHED BY:

APPROVED BY

DATE

REFERENCED BY:

DATE

EDWARD J. BOTTOMLEY

11-19-87

CORNER RECORD
WARRICK COUNTY



DESCRIPTION :

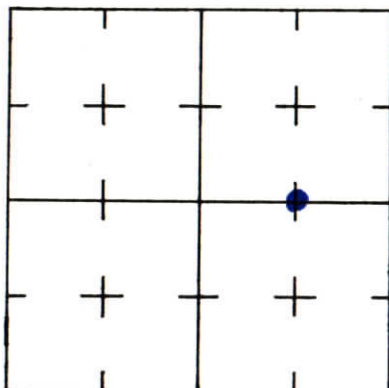
SW CORNER SE¹/₄ NE¹/₄

SECTION 2, T. 6 S. R. 9 W.

2nd PRINCIPLE MERIDIAN

WARRICK COUNTY SURVEYOR
KARAN HARGRAVE-BARNHILL

INDICATE CORNER REFERENCED



DESCRIBE CORNER REFERENCED

HOUGHIN HEIGHTS
SECTION "A"

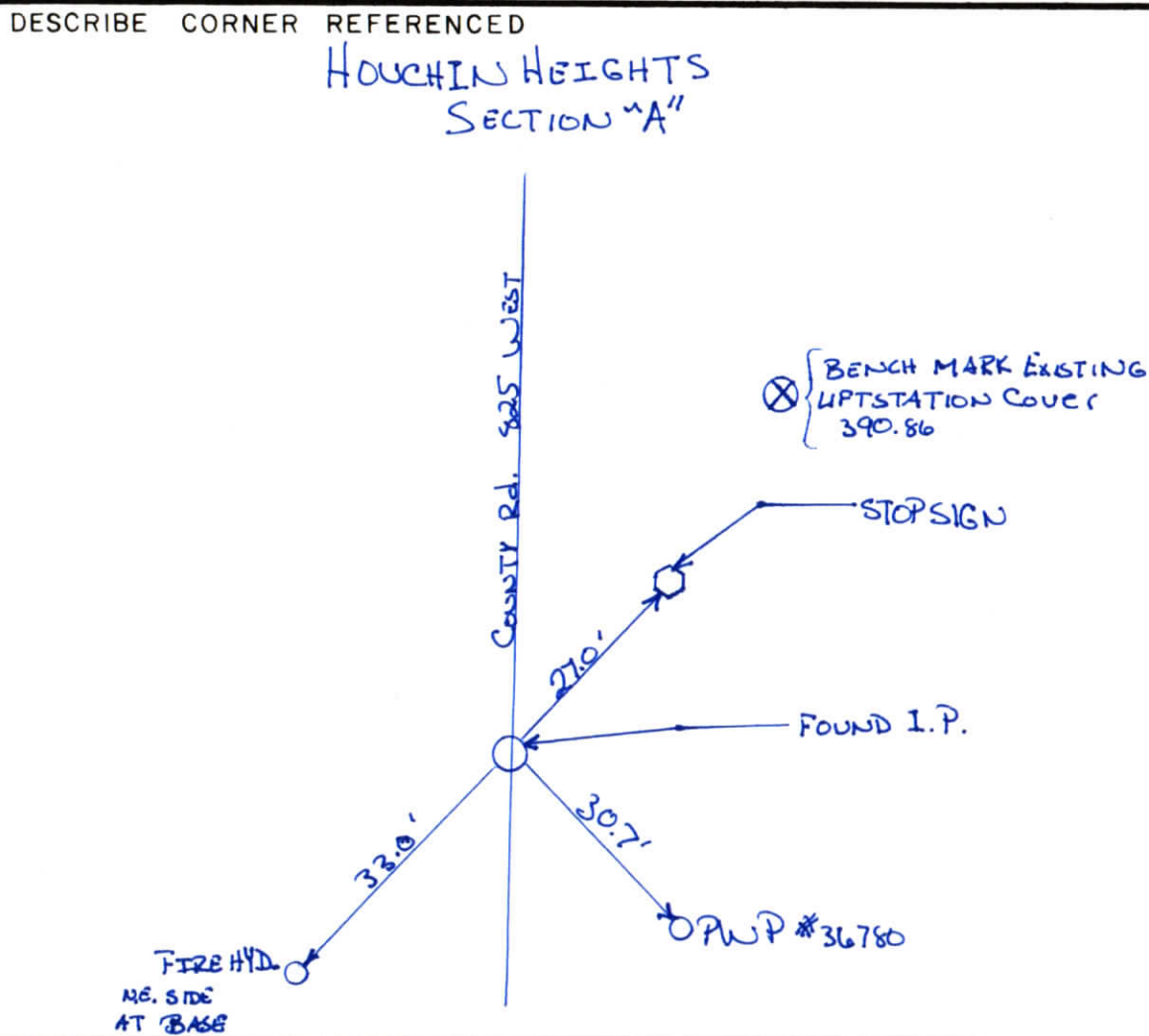
STATE PLANE COORDINATE DATA

INDIANA ZONE: WEST

X _____

Y _____

ESTABLISHED BY:



APPROVED BY

DATE

REFERENCED BY:

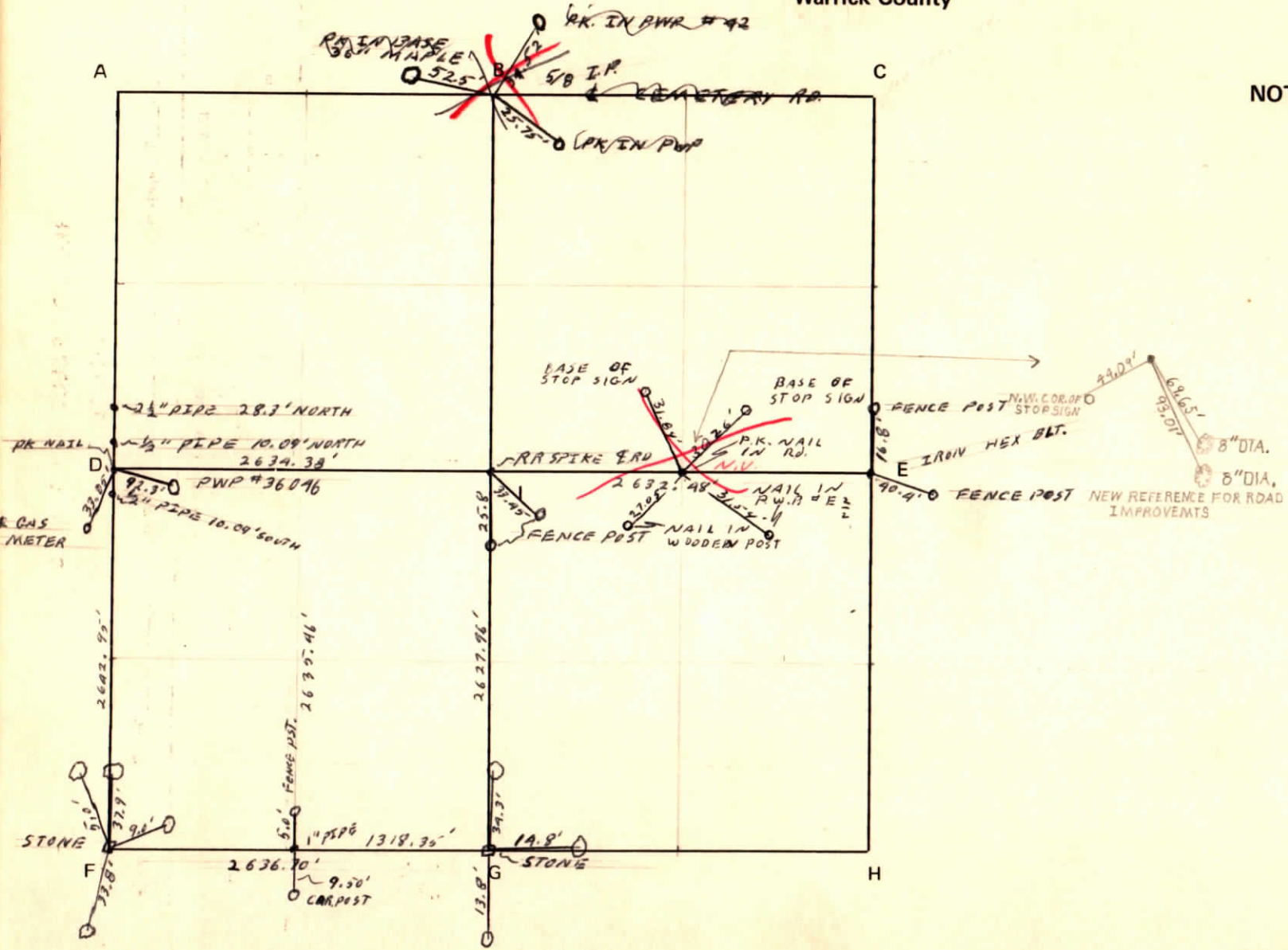
DATE

EDWARD J. BOTTOMLEY

11-19-87

CORNER CODE SYSTEM
Warrick County

NOTES



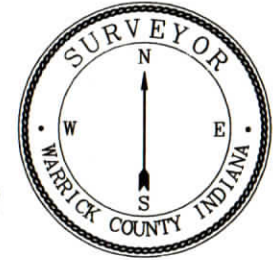
RECORD OF SECTION CORNERS

Warrick County

Section _____ Township _____ Range _____ West _____ 2nd Principle Meridian

Date	Cor	Description of		Distance from Corner	Azimuth from Corner (North Assumed)	Cond	Check By	Remarks
		Monument	Reference					
	A							
	B							
	C							
	D							
	E							
	F							
	G							
	H							
	I							

CORNER RECORD WARRICK COUNTY

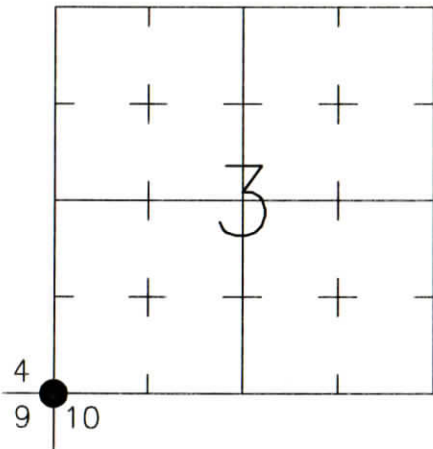


DESCRIPTION:
SOUTHWEST CORNER _____
SECTION 3, T. 6 S., R. 9 W.
2nd PRINCIPAL MERIDIAN

WARRICK COUNTY SURVEYOR
KARAN HARGRAVE-BARNHILL

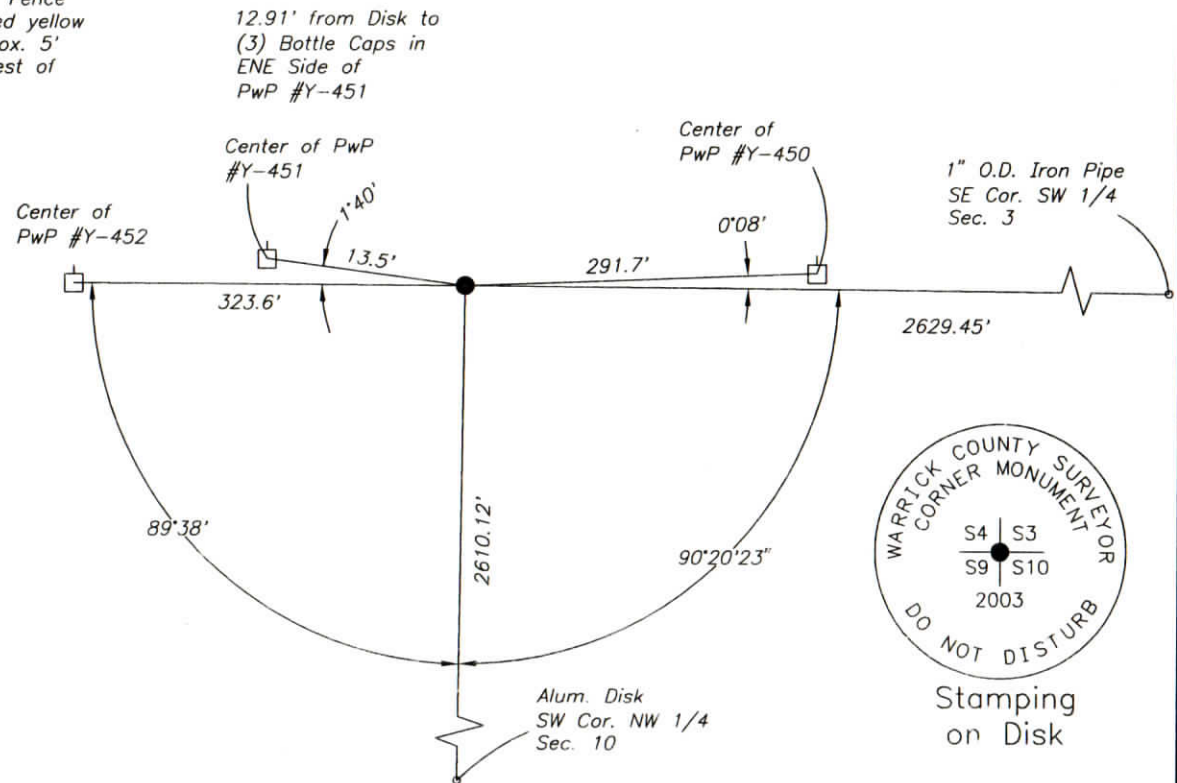
FOR NOTES ON CORNER HISTORY SEE REVERSE.

INDICATE CORNER REFERENCED:



MONUMENT TYPE: ALUMINUM DISK
SIZE: 3-1/4" DIAM.
DEPTH/HEIGHT: 12" BELOW GRADE
REFERENCE TIE DRAWING:

NOTE: Metal Fence Posts painted yellow placed approx. 5' east and west of disk.



STATE PLANE COORDINATE DATA:
INDIANA WEST ZONE, NAD 83 (1997)
U.S. SURVEY FEET

X _____

Y _____

COORDINATES ESTABLISHED BY:

APPROVED BY:

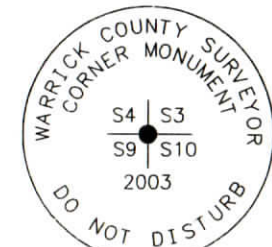
DATE:

REFERENCED BY: D.DREES/G.M.BURRESS

DATE: 5/23/03

APPROVED BY: P.JONES, RLS#9600016

DATE: 5/29/03



Stamping
on Disk

CORNER FILE CODE:
T6S-R9W-E--13

CORNER HISTORY:

CORNER FILE CODE:
T6S-R9W-E-13

ORIGINAL USPLS SURVEY: Corner established by Jacob Fowler, Dec. 23, 1805 "Post"

COUNTY SURVEYOR'S BOOKS: Book 1 P. 96: John C. Frary WCS Mar. 30, 1858 "3 trees standing. Stake in Water".

Book 1 P. 243: O.B.Pasco WCS Dec. 18-20, 1865 (Mon. not identified).

Book 1 P. 302: O.B.Pasco WCS March 15, 1874 (Mon. not identified).

OTHER SURVEYS AND PLATS: "Corner Code System" card shows an undated reference of 13.1' to a power pole, and a distance along the north line of the NW 1/4 of Section 10 of "2929.45 by Amax"; monument not identified.

VERIFICATION OF CORNER POSITION: May 2003; the dimensions shown on the "Corner Code System" reference were found to be consistent with Vectren's Y-56 transmission line plans from 1947. Other ties to the 1947 plans within an area 3 miles westerly of this corner indicated the plan dimensions to be reasonably reliable. Although the plans do not indicate a monument at this corner, the transmission line in this area generally followed the section line as apparent in 1947 (the power line shown 1' south of section line at a point 1/2 mile west, 1' north of section line at a point 1800' east). The corner's easting position was re-established using the 2629.45' dimension from the old corner reference for the easting, with the northing re-established by proportioning from the transmission line plans. The uncertainty of this position relative to the point referenced on the "Corner Code System" card is estimated at 0.5' east-west and 3' north-south.

Perry E. Jones 5/29/03

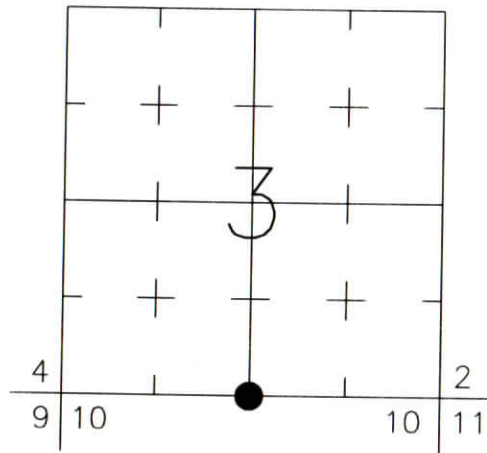
CORNER RECORD
WARRICK COUNTY



DESCRIPTION:
SOUTHWEST CORNER SOUTHEAST QUARTER
SECTION 3, T. 6 S., R. 9 W.
2nd PRINCIPLE MERIDIAN

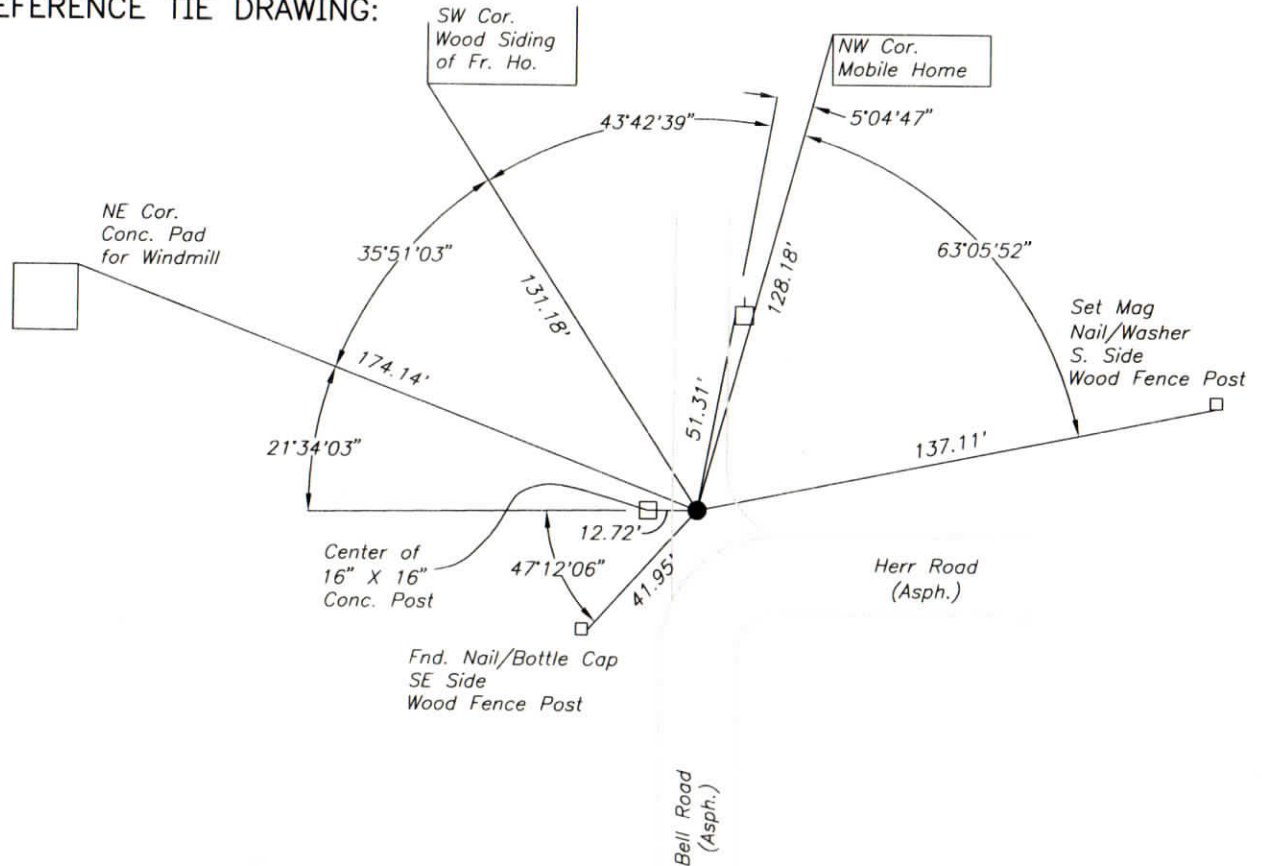
WARRICK COUNTY SURVEYOR
KARAN HARGRAVE-BARNHILL

INDICATE CORNER REFERENCED:



MONUMENT TYPE: IRON PIPE
SIZE: 1" O.D.
DEPTH/HEIGHT: 3" BELOW GRADE
REFERENCE TIE DRAWING:

FOR NOTES ON CORNER HISTORY SEE REVERSE.



STATE PLANE COORDINATE DATA:
INDIANA WEST ZONE, NAD 83 (1997)
U.S. SURVEY FEET

X _____

Y _____

COORDINATES ESTABLISHED BY:

APPROVED BY:

DATE:

REFERENCED BY: D.DREES/R.HARLAN

DATE: 9/18/02

APPROVED BY: P.JONES, RLS#9600016

DATE: 9/23/02

CORNER FILE CODE:
T6S-R9W-E-15

CORNER HISTORY:

CORNER FILE CODE:
T6S-R9W-E-15

ORIGINAL USPLS SURVEY: Corner established by Jacob Fowler, Dec. 24, 1805 "Post" (@39.75 chains of 79.50 chains).

COUNTY SURVEYOR'S BOOKS: Book 1 P. 96: John C. Frary WCS Mar. 30, 1858 "One tree standing".

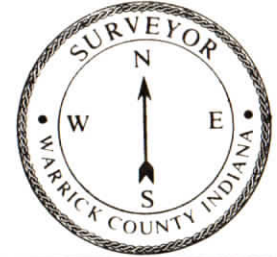
Book 1 P. 243: O.B.Pasco WCS Dec. 18-20, 1865 (Mon. not identified).

OTHER SURVEYS AND PLATS: "Corner Code System" card shows an undated reference, monument not identified. "Corner Record" card shows a 1988 reference to a 1" iron pipe 2" deep (by INDOT survey party).

VERIFICATION OF CORNER POSITION: September, 2002: The 1" O.D. iron pipe was found in place, reasonably consistent with the 1988 INDOT reference ties.

Perry E. Jones 9/23/02

CORNER RECORD
WARRICK COUNTY

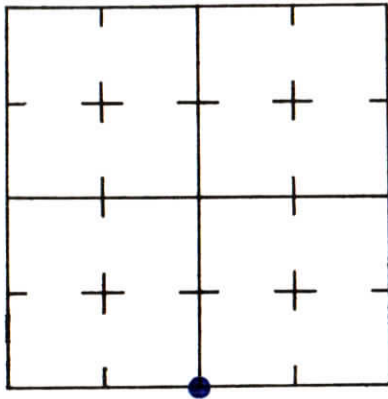


DESCRIPTION:
SE CORNER ^{SE 1/4} SW 1/4

SECTION 3, T. 6 S. R. 9 W.
2nd PRINCIPLE MERIDIAN

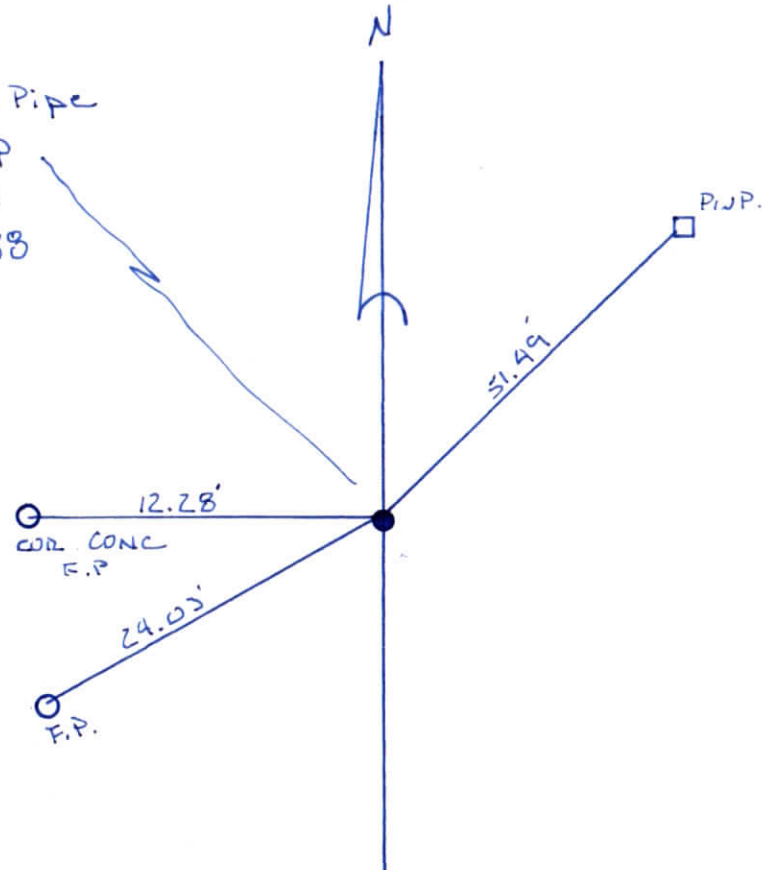
WARRICK COUNTY SURVEYOR
MICHAEL IRVIN

INDICATE CORNER REFERENCED



DESCRIBE CORNER REFERENCED

1" Iron Pipe
2" Deep
S.P. #4
11-21-88



STATE PLANE COORDINATE DATA

INDIANA ZONE: WEST

X _____

Y _____

ESTABLISHED BY:

APPROVED BY

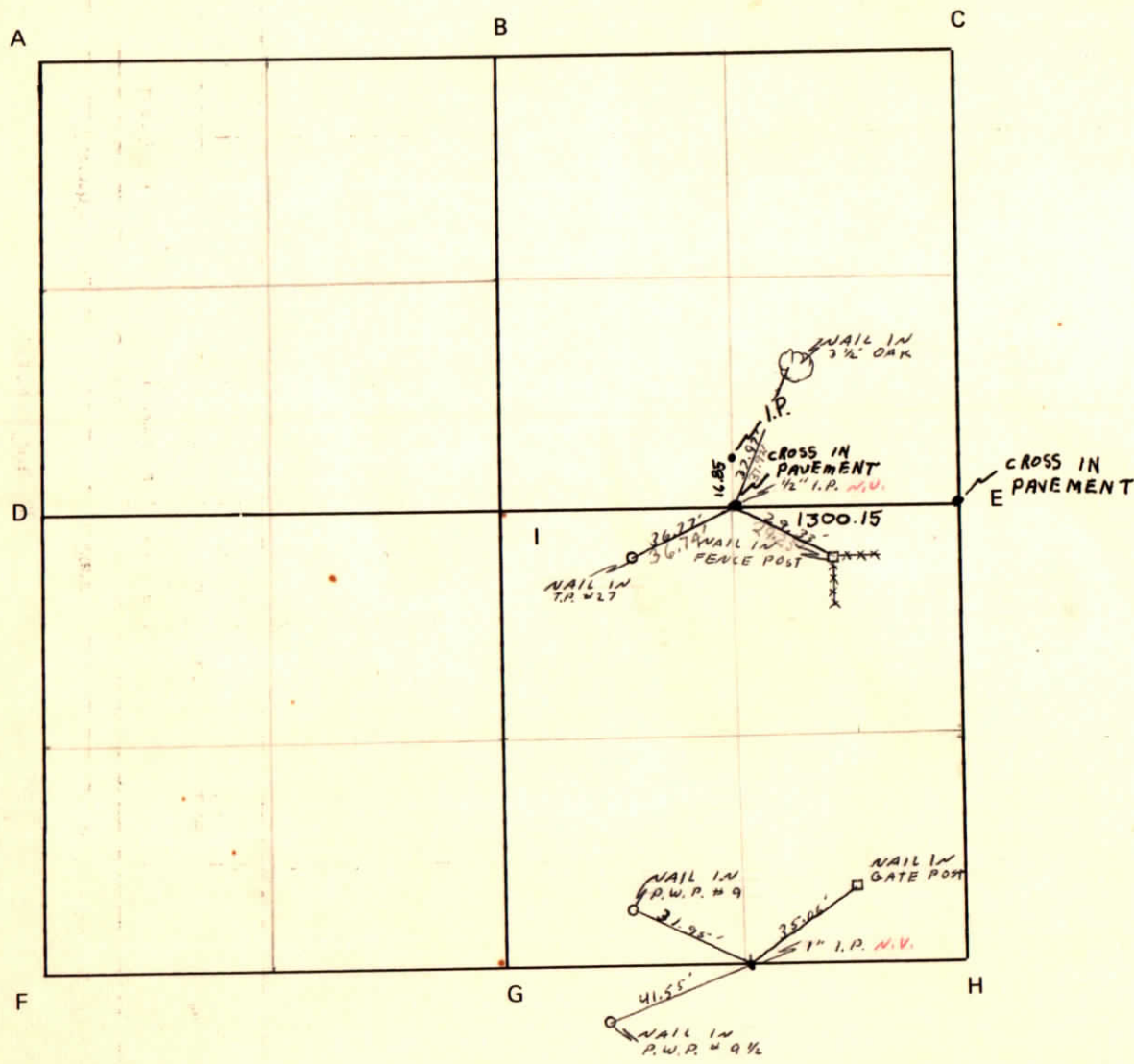
DATE

REFERENCED BY:

DATE

CORNER CODE SYSTEM
Warrick County

NOTES



RECORD OF SECTION CORNERS

Warrick County

Section 3 Township 6South Range 9West 2nd Principle Meridian

Date	Cor	Description of		Distance from Corner	Azimuth from Corner (North Assumed)	Cond	Check By	Remarks
		Monument	Reference					
	A	crosscut in pavement.						SE cor. SE1/4-NE1/4 BY Jesse Anderson
	B	crosscut in pavement						SE cor. SE1/4-NE1/4
	C							
	D							
	E							
	F							
	G							
	H							
	I							

CORNER RECORD WARRICK COUNTY

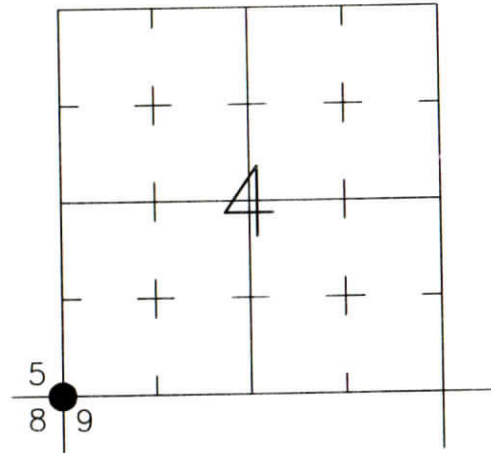


DESCRIPTION:
SOUTHWEST CORNER _____
SECTION 4, T. 6 S., R. 9 W.
2nd PRINCIPAL MERIDIAN

WARRICK COUNTY SURVEYOR
KARAN HARGRAVE-BARNHILL

FOR NOTES ON CORNER HISTORY SEE REVERSE

INDICATE CORNER REFERENCED:



STATE PLANE COORDINATE DATA:
INDIANA WEST ZONE, NAD 83 (1997)
U.S. SURVEY FEET

X _____

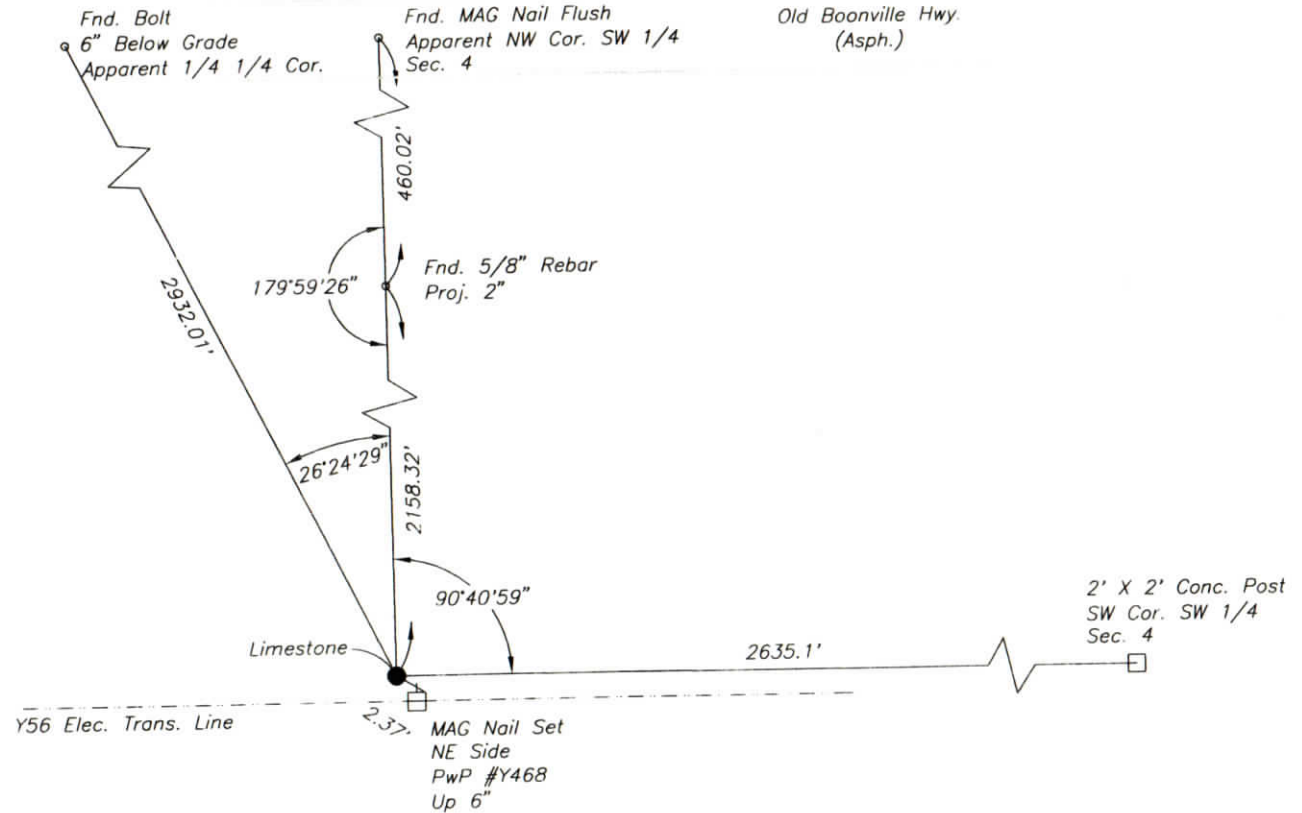
Y _____

COORDINATES ESTABLISHED BY:

APPROVED BY:

DATE:

MONUMENT TYPE: LIMESTONE
SIZE: 3" X 5" X 13"
DEPTH/HEIGHT: FLUSH
REFERENCE TIE DRAWING:



REFERENCED BY: D.DREES/G.M.BURRESS
/R.CUMMINS
APPROVED BY: P.JONES, RLS#9600016

DATE: 5/16/03
DATE: 5/29/03

CORNER FILE CODE:
T6S-R9W-E-09

CORNER HISTORY:

CORNER FILE CODE:
T6S-R9W-E-09

ORIGINAL USPLS SURVEY: Corner established by Jacob Fowler, Dec. 23, 1805 "Post"

COUNTY SURVEYOR'S BOOKS: Book 1 P. 302: O.B.Pasco WCS March 15, 1874 (Monument not identified).

Book 3 P. 236: C. Warren Abbott Dep. WCS Mar. 14, 1918 "Old Established Corner was located".

OTHER SURVEYS AND PLATS: "Stone" called on "Corner Code System" card, no references.

VERIFICATION OF CORNER POSITION: May 2003; the limestone shown was found in place. Its position is reasonably consistent with 1947 plans for Vectren's Y-56 transmission line, which show the proposed power pole location to be 1' south of a "Stone Pile" marking the corner. Ties to other features shown on the 1947 plans within an area 1 mile westerly and 1 mile easterly of this corner indicated the existing poles are generally very close to their plan locations.

Perry E. Jones 5/29/03

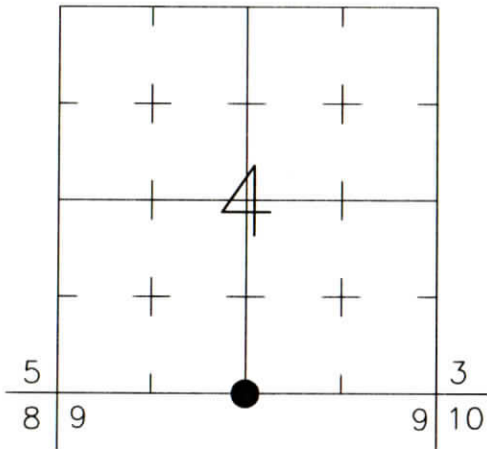
CORNER RECORD
WARRICK COUNTY



DESCRIPTION:
SOUTHWEST CORNER SOUTHEAST QUARTER
SECTION 4, T. 6 S., R. 9 W.
2nd PRINCIPAL MERIDIAN

WARRICK COUNTY SURVEYOR
KARAN HARGRAVE-BARNHILL

INDICATE CORNER REFERENCED:



MONUMENT TYPE: CONC. POST
SIZE: 2' X 2'
DEPTH/HEIGHT: PROJ. APPROX. 4'
REFERENCE TIE DRAWING:

FOR NOTES ON CORNER HISTORY SEE REVERSE.

STATE PLANE COORDINATE DATA:
INDIANA WEST ZONE, NAD 83 (1997)
U.S. SURVEY FEET

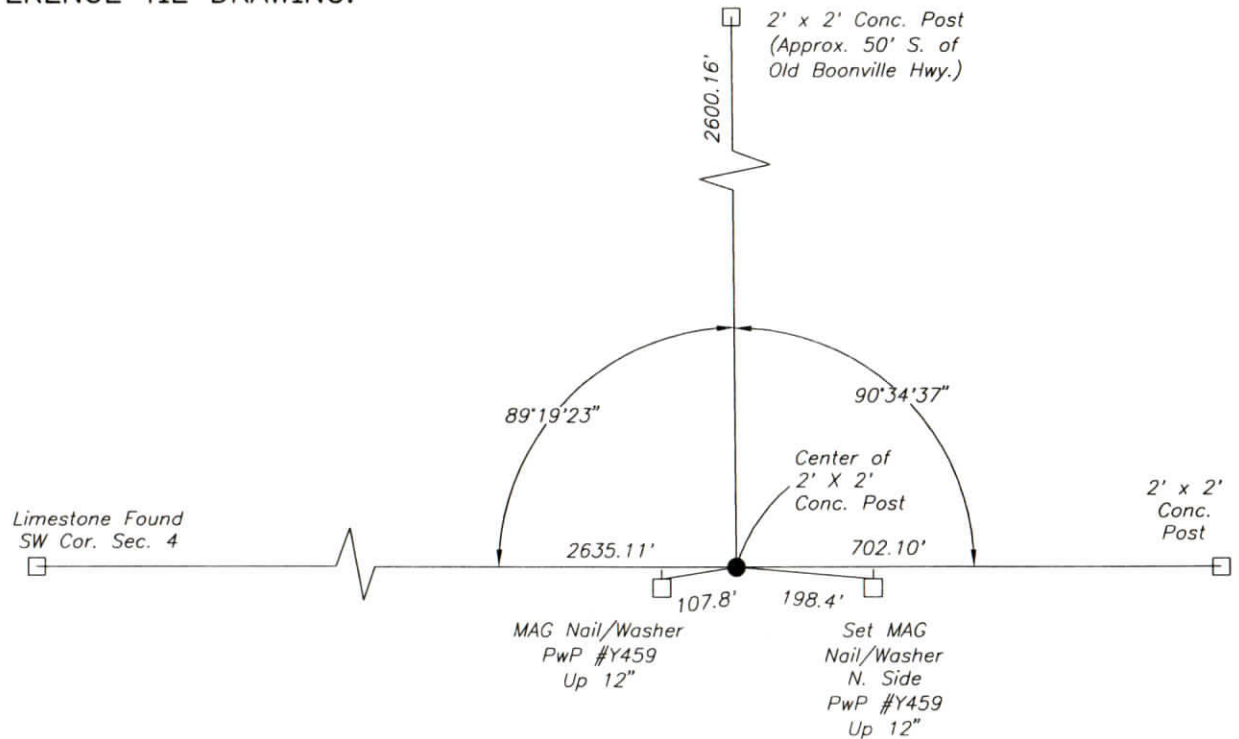
X ----

Y ----

COORDINATES ESTABLISHED BY:

APPROVED BY:

DATE:



REFERENCED BY: D.DREES/M.BURRESS

DATE: 5/16/03

APPROVED BY: P.JONES, RLS#9600016

DATE: 7/24/03

CORNER FILE CODE:
T6S-R9W-E-11

CORNER HISTORY:

CORNER FILE CODE:
T6S-R9W-E-11

ORIGINAL USPLS SURVEY: Corner established by Jacob Fowler, Dec. 24, 1805 "Post"

COUNTY SURVEYOR'S BOOKS: Book 1 P. 302: O.B.Pasco WCS March 15, 1874 (Mon. not identified)

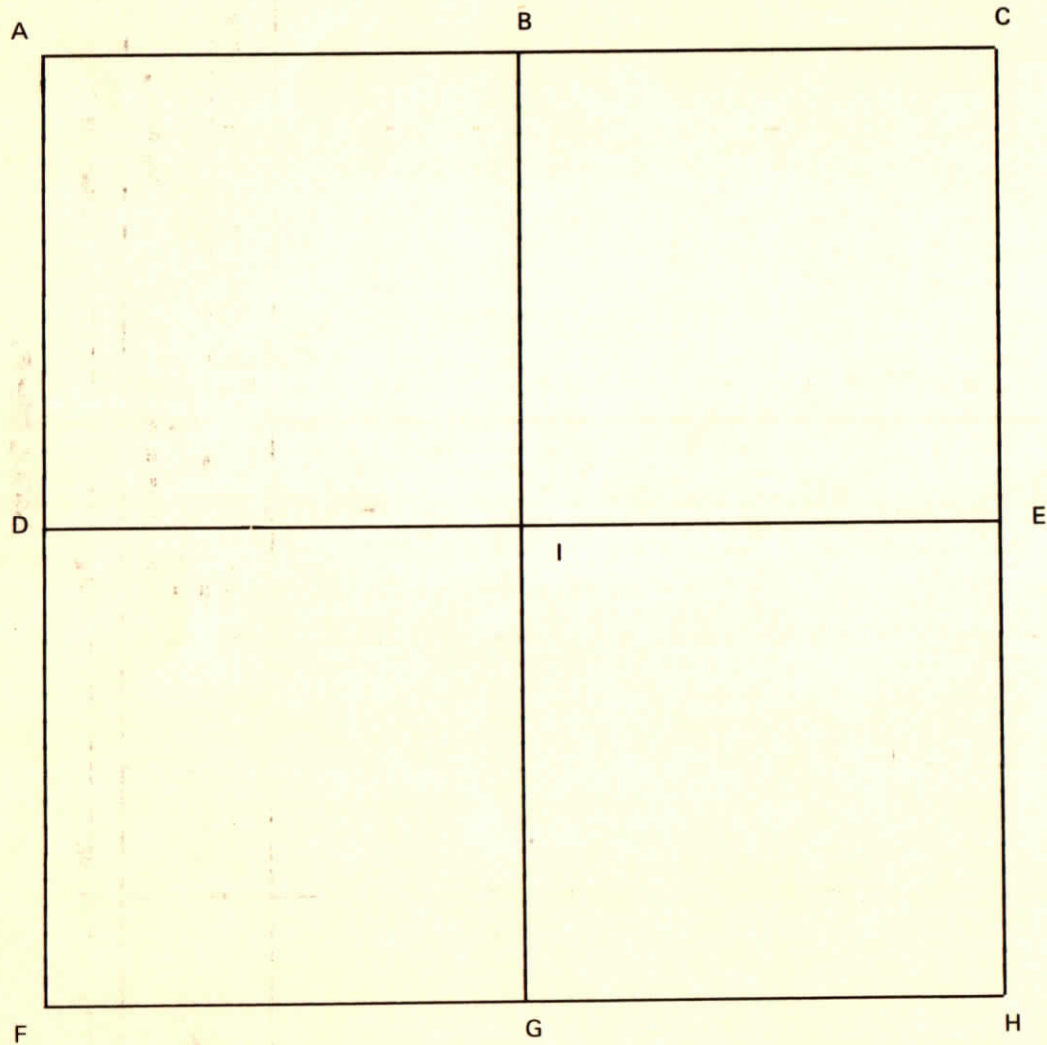
OTHER SURVEYS AND PLATS: 1947 plans for Vectren's Y-56 transmission line show a concrete post marking the quarter section corner, 1' north of the proposed power line, with proposed power poles 107' westerly and 198' easterly of the post.

VERIFICATION OF CORNER POSITION: May, 2003; the concrete post shown was found in place, consistent with the 1947 transmission line plans. An adjoining property owner whose tract is bounded by similar posts did not know who originally set the posts.

Perry E. Jones 7/24/03

Section 4 Township 6 South Range 9 West 2nd P.M.

CORNER CODE SYSTEM
Warrick County



NOTES

RECORD OF SECTION CORNERS

Warrick County

Section 4 Township 6South Range 9West 2nd Principle Meridian

Date	Cor	Description of		Distance from Corner	Azimuth from Corner (North Assumed)	Cond	Check By	Remarks
		Monument	Reference					
	A							
	B							
	C							
	D							
	E							
	F							
	G							
	H							
	I							

CORNER RECORD
WARRICK COUNTY

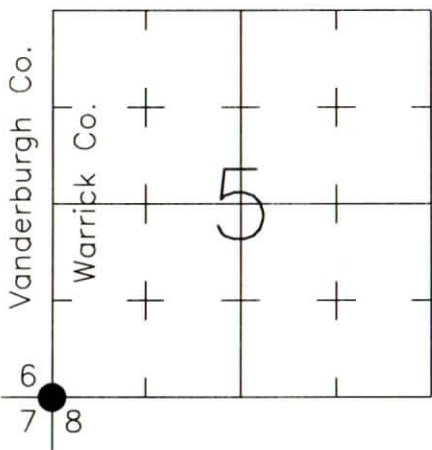


DESCRIPTION:
SOUTHWEST CORNER _____
SECTION 5, T. 6 S., R. 9 W.
2nd PRINCIPAL MERIDIAN

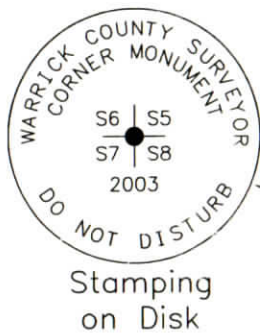
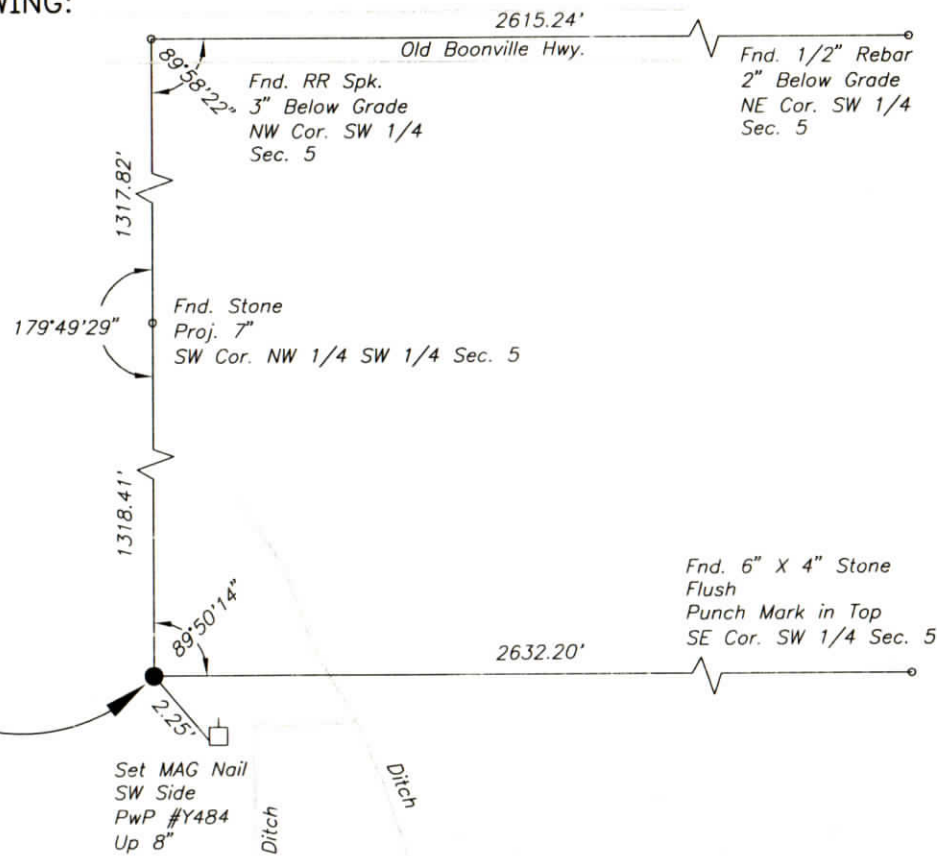
WARRICK COUNTY SURVEYOR
KARAN HARGRAVE-BARNHILL

FOR NOTES ON CORNER HISTORY SEE REVERSE.

INDICATE CORNER REFERENCED:



MONUMENT TYPE: ALUMINUM DISK
SIZE: 3-1/4" DIAM.
DEPTH/HEIGHT: FLUSH
REFERENCE TIE DRAWING:



STATE PLANE COORDINATE DATA:
INDIANA WEST ZONE, NAD 83 (1997)
U.S. SURVEY FEET

X
Y

COORDINATES ESTABLISHED BY:

APPROVED BY:

DATE:

REFERENCED BY: D.DREES/K.DILGER

DATE: 6/2/03

APPROVED BY: P.JONES, RLS#9600016

DATE: 7/24/03

CORNER FILE CODE:
T6S-R9W-E-05

CORNER HISTORY:

CORNER FILE CODE:
T6S-R9W-E-05

ORIGINAL USPLS SURVEY: Corner established by Jacob Fowler, Dec. 23, 1805 "Post"

COUNTY SURVEYOR'S BOOKS: Book 1, P. 129: John C. Frary WCS Dec. 17, 1859 "Original Trees Standing - Catalpa Post Marked"

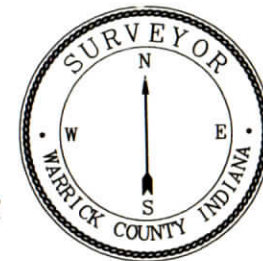
OTHER SURVEYS AND PLATS: Vanderburgh County Surveyor's Office provided calculated coordinates for this corner (measured bearing and distance from W 1/4 corner of Section 5 to SW Cor. NW 1/4 SW 1/4 of Section 5 was "doubled" to calculate the SW corner of the section).

1947 plans for Vectren's Y-56 transmission line show the section corner, as indicated by fence lines running west and south, falling 1' north and 2' west of a proposed pole location.

VERIFICATION OF CORNER POSITION: June, 2003; Ties were made to a RR spike marking the W 1/4 corner of Section 5 and a stone marking the SW Cor. NW 1/4 SW 1/4 of Section 5. Ties were also made to power poles and other features identified on the 1947 transmission line plans within an area 2 miles easterly; these ties indicated the existing transmission line poles are generally very close to their plan locations. The position calculated by the Vanderburgh County Surveyor's Office was found to lie 1.3' north and 6.0' west of transmission pole #Y484. This information was discussed with Doug McDonald, RLS, of the Vanderburgh Surveyor's Office. Mr. McDonald agreed that the fence corner indicated on the power line plans in 1947 probably provides better evidence of the corner location than the method previously used to calculate the corner. The aluminum disk shown was set 1' north and 2' west of power pole #Y484 per the 1947 plans. Ties to the RR spike and stone are shown, from which new coordinates for the corner can be calculated.

Perry E. Jones 7/24/03

CORNER RECORD
WARRICK COUNTY

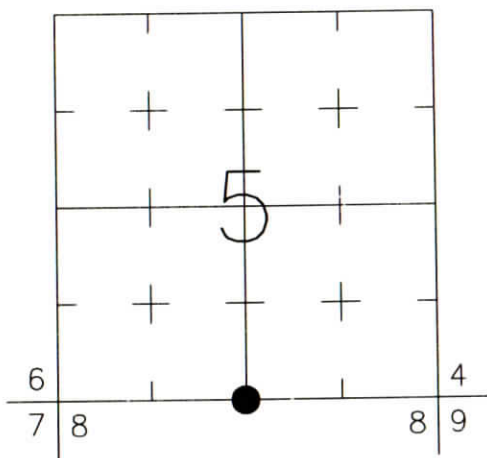


DESCRIPTION:
SOUTHWEST CORNER SOUTHEAST QUARTER
SECTION 5, T. 6 S., R. 9 W.
2nd PRINCIPAL MERIDIAN

WARRICK COUNTY SURVEYOR
KARAN HARGRAVE-BARNHILL

FOR NOTES ON CORNER HISTORY SEE REVERSE.

INDICATE CORNER REFERENCED:



MONUMENT TYPE: STONE (PUNCH MARK IN TOP)
SIZE: 7" X 4"
DEPTH/HEIGHT: FLUSH
REFERENCE TIE DRAWING:

STATE PLANE COORDINATE DATA:
INDIANA WEST ZONE, NAD 83 (1997)
U.S. SURVEY FEET

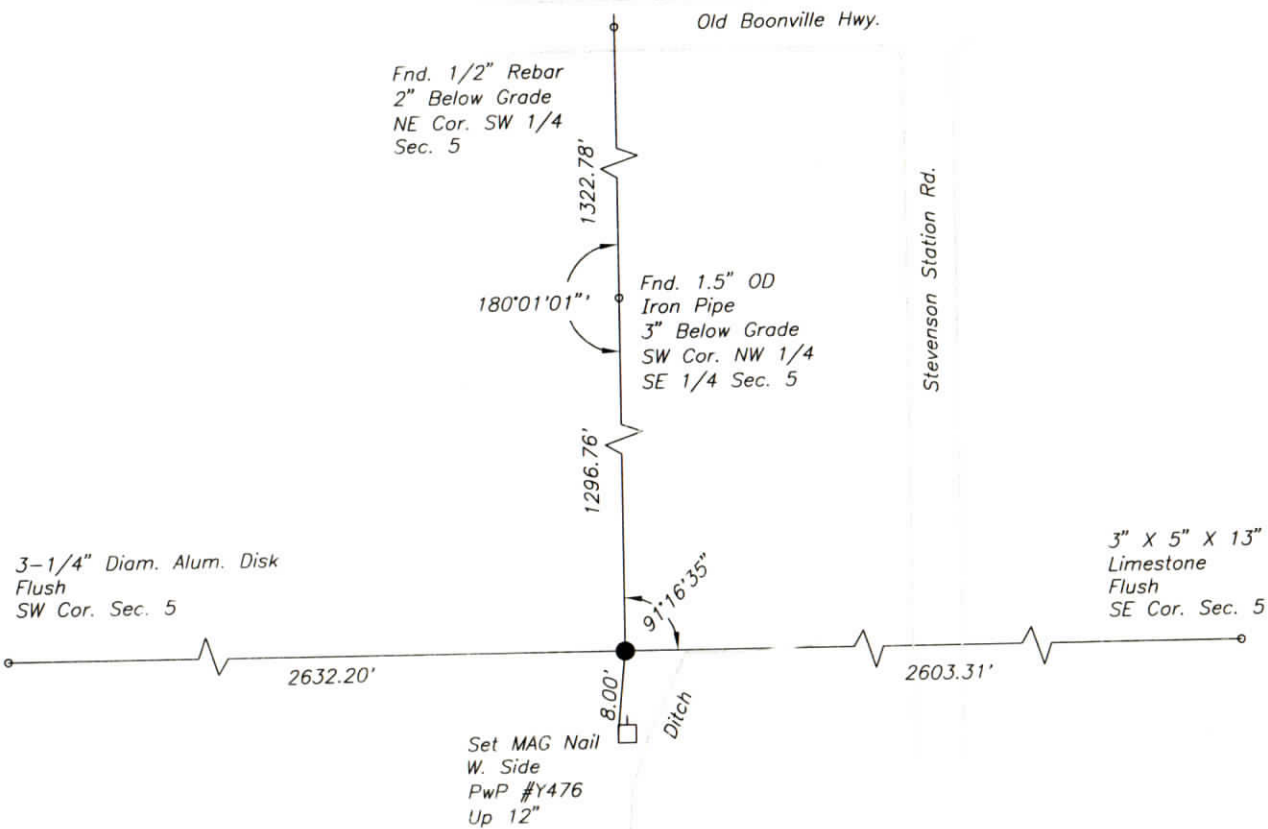
X ----

Y ----

COORDINATES ESTABLISHED BY:

APPROVED BY:

DATE:



REFERENCED BY: D.DREES/K.DILGER

DATE: 6/2/03

APPROVED BY: P.JONES, RLS#9600016

DATE: 6/2/03

CORNER FILE CODE:
T6S-R9W-E-07

CORNER HISTORY:

CORNER FILE CODE:
T6S-R9W-E-07

ORIGINAL USPLS SURVEY: Corner established by Jacob Fowler, Dec. 24, 1805 "Post" (@39.9 chains of 79.8 chains)

COUNTY SURVEYOR'S BOOKS: Book 1, P. 129: John C. Frary WCS Dec. 17, 1859 "Both Trees Standing and Post Driven (Mulberry)".

Book 3, P. 236: C. Warren Abbott Dep. WCS Mar. 14, 1918 "Old Established Corner was located".

OTHER SURVEYS AND PLATS: 1947 plans for Vectren's Y-56 transmission line show the quarter section corner falling 8' north of proposed pole #Y476 (no monument was identified marking the corner).

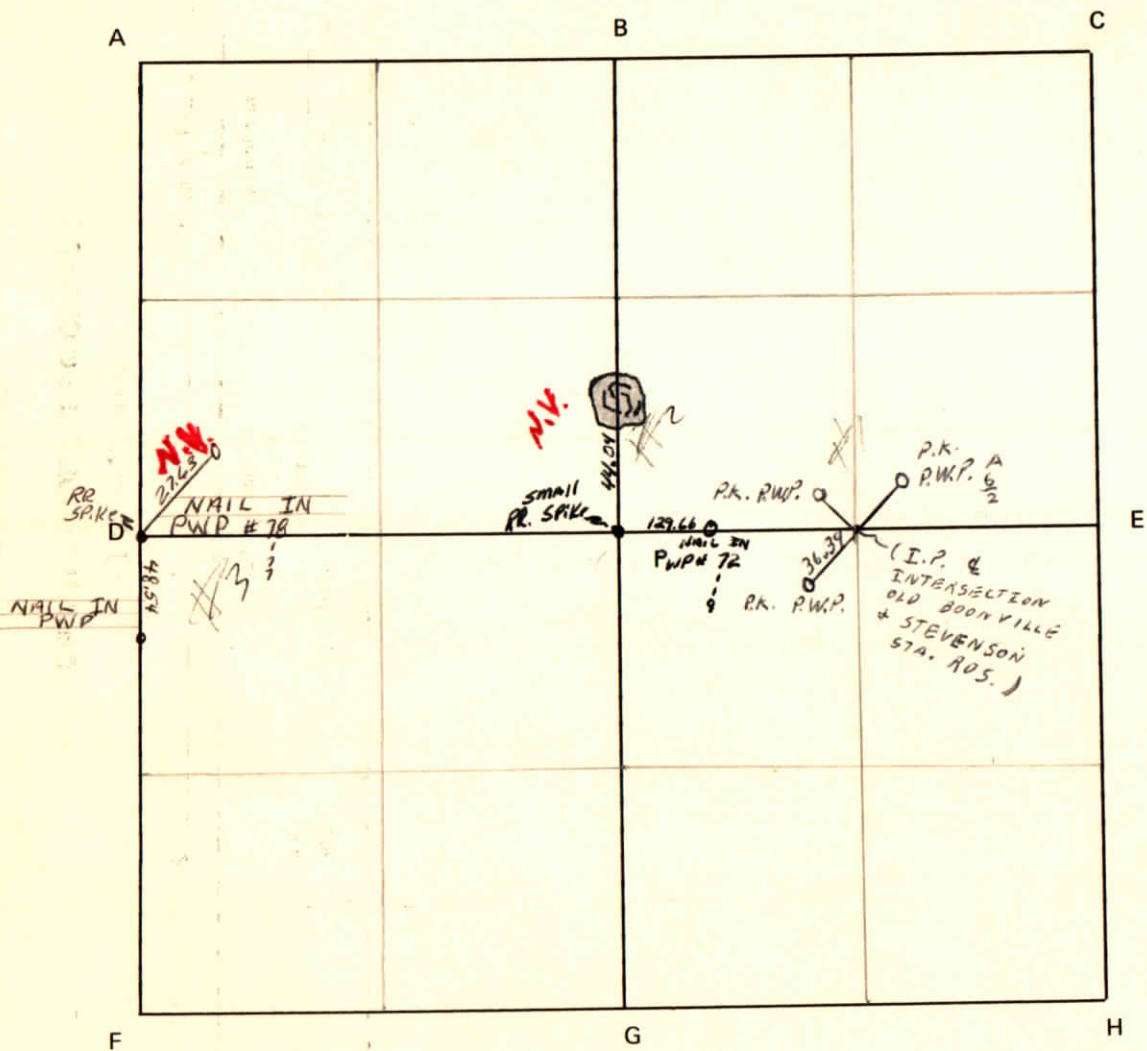
VERIFICATION OF CORNER POSITION: June, 2003; the stone shown was found in place, 8' north of power pole #Y476, consistent with the 1947 transmission line plans.

Perry E. Jones 6/02/03

Section 5 Township 6^{South} Range 9^{West} 2nd P.M.

CORNER CODE SYSTEM
Warrick County

NOTES



RECORD OF SECTION CORNERS

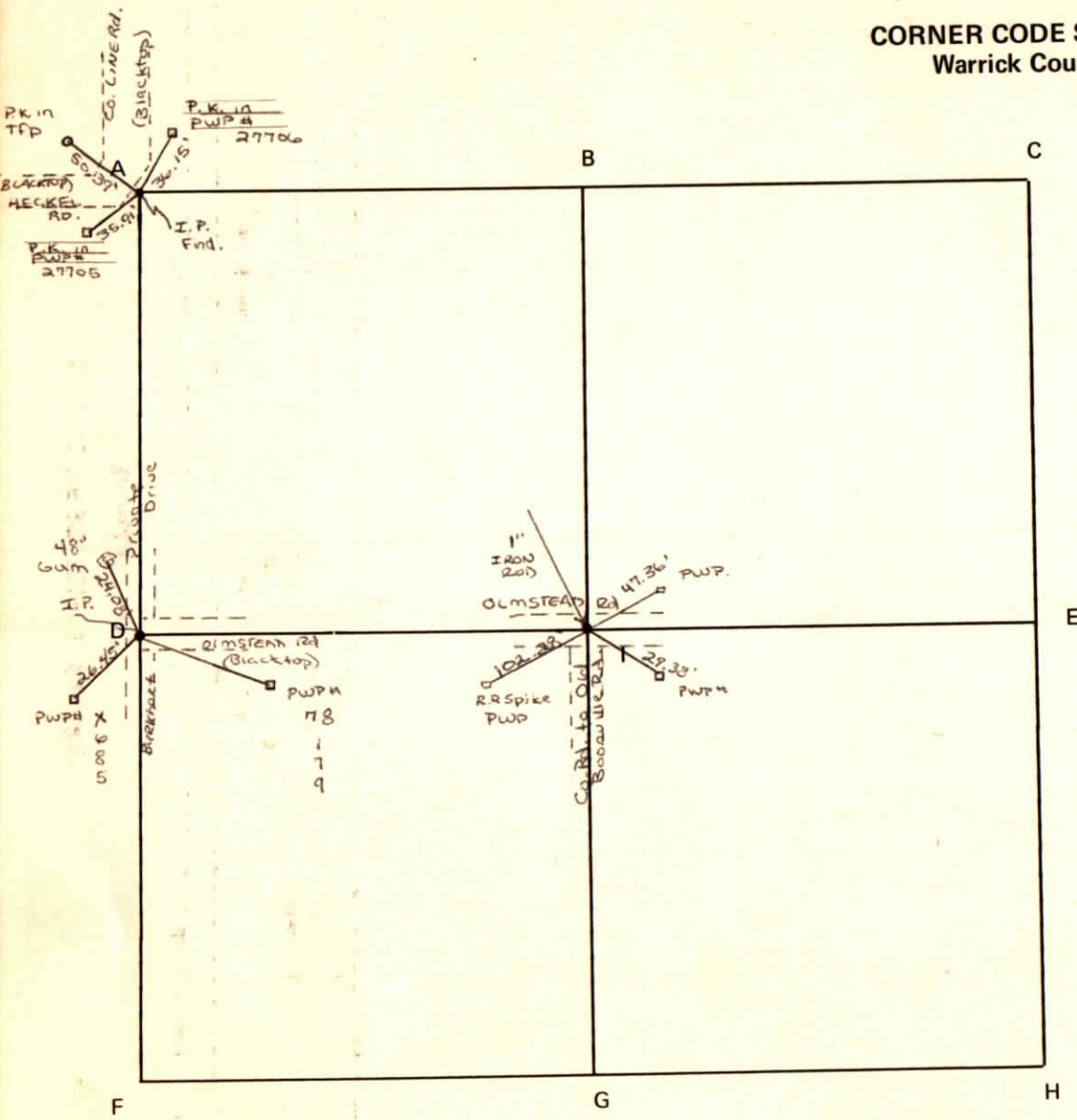
Warrick County

Section 5 Township 6 South Range 9 West 2nd Principle Meridian

Date	Cor	Description of		Distance from Corner	Azimuth from Corner (North Assumed)	Cond	Check By	Remarks
		Monument	Reference					
	A							
	B							
	C							
	D							
	E							
	F							
	G							
	H							
	I							

CORNER CODE SYSTEM
Warrick County

NOTES

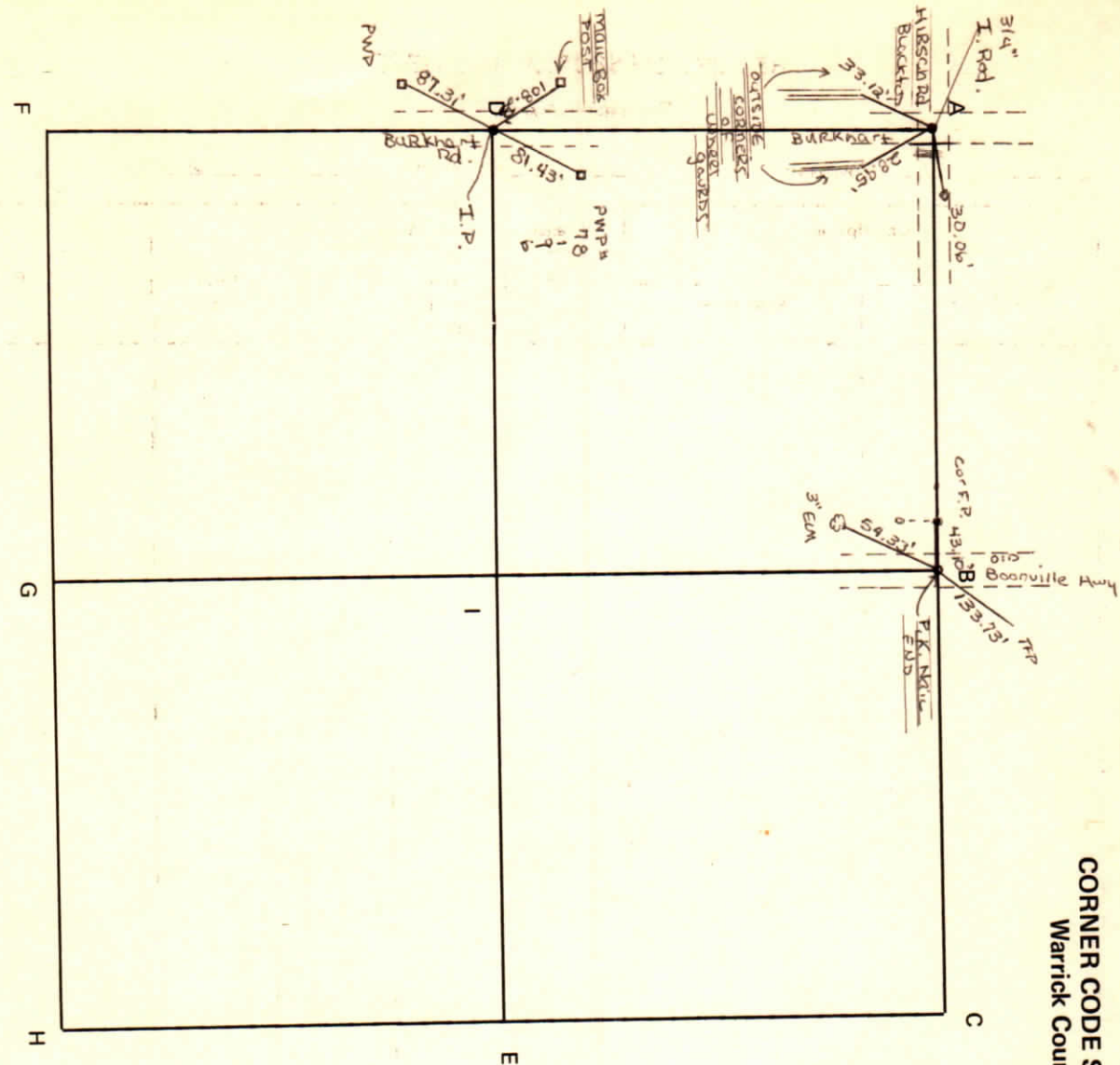


RECORD OF SECTION CORNERS

Warrick County

Section 6 Township 6South Range 9West 2nd Principle Meridian

Date	Cor	Description of		Distance from Corner	Azimuth from Corner (North Assumed)	Cond	Check By	Remarks
		Monument	Reference					
	A							
	B							
	C							
	D							
	E							
	F							
	G							
	H							
	I							



NOTES

RECORD OF SECTION CORNERS

Warrick County

Section 7 Township 6south Range 9west 2nd Principle Meridian

Date	Cor	Description of		Distance from Corner	Azimuth from Corner (North Assumed)	Cond	Check By	Remarks
		Monument	Reference					
	A							
	B							
	C							
	D							
	E							
	F							
	G							
	H							
	I							

CORNER RECORD
WARRICK COUNTY

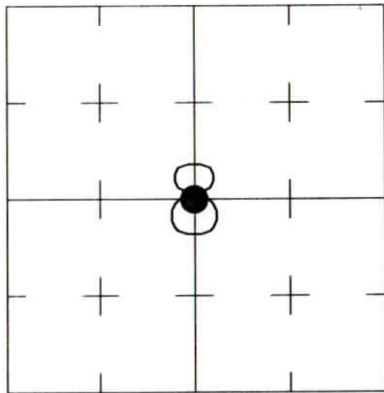


DESCRIPTION:
SOUTHWEST CORNER NORTHEAST QUARTER
SECTION 8, T. 6 S., R. 9 W.
2nd PRINCIPAL MERIDIAN

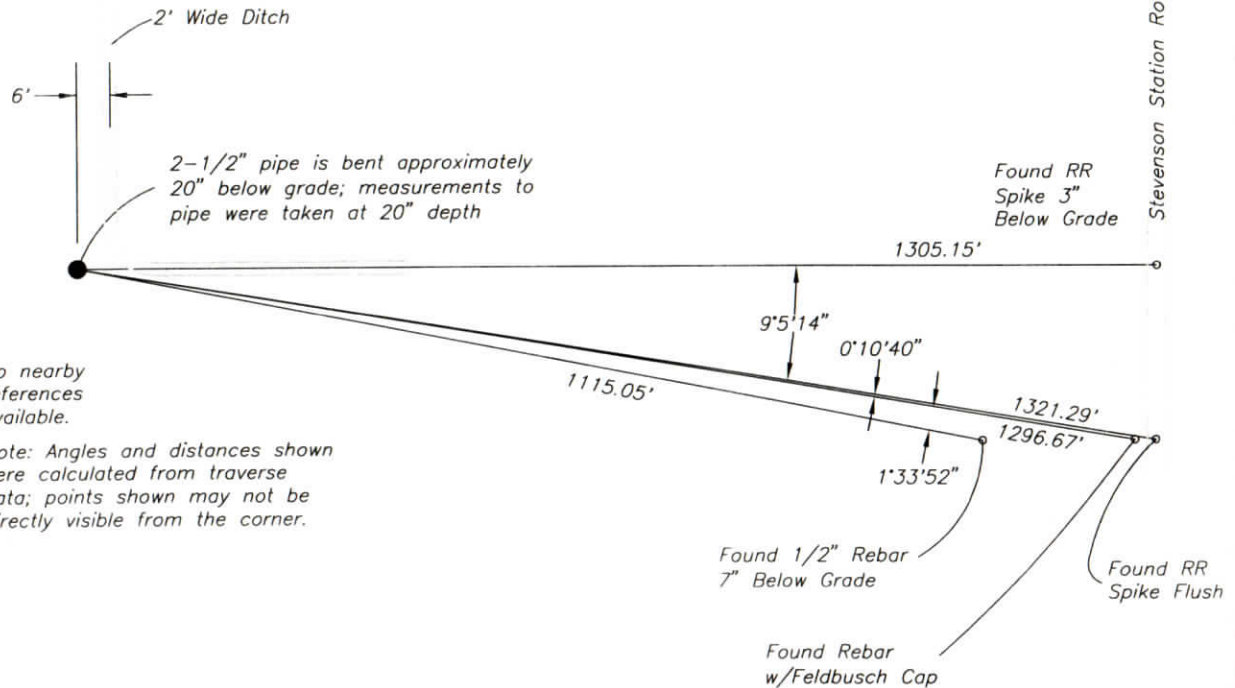
WARRICK COUNTY SURVEYOR
KARAN HARGRAVE-BARNHILL

FOR NOTES ON CORNER HISTORY SEE REVERSE.

INDICATE CORNER REFERENCED:



MONUMENT TYPE: IRON PIPE
SIZE: 2-1/2" O.D.
DEPTH/HEIGHT: 12" BELOW GRADE
REFERENCE TIE DRAWING:



STATE PLANE COORDINATE DATA:
INDIANA WEST ZONE, NAD 83 (1997)
U.S. SURVEY FEET

X ----

Y ----

COORDINATES ESTABLISHED BY:

APPROVED BY:

DATE:

REFERENCED BY: D.DREES/G.F.BERRY

APPROVED BY: P.JONES, RLS#9600016

DATE: 5/13/03

DATE: 7/25/03

CORNER FILE CODE:
T6S-R9W-G-07

CORNER HISTORY:

CORNER FILE CODE:
T6S-R9W-G-07

ORIGINAL USPLS SURVEY: (Center of Section not monumented by USPLS Survey)

COUNTY SURVEYOR'S BOOKS: Book 1 P. 129: John C. Frary WCS Dec. 17, 1859 "Catalpa Post"

Book 3 P. 244: G.M.Emmerson Dep.WCS Oct. 13, 1919 (mon. not identified)

Book 3 P. 244: Calvin S. DeWeese WCS (date ____) (Corner not found or reset - 16th corner set 1/4 mi. west to satisfaction of interested parties)

OTHER SURVEYS AND PLATS: IP called on "Corner Code System" card, no references.

A 1963 survey by Edward Bottomley, recorded in Plat Book 4, page 149, shows "IP" marking the corner, noted as "Recently Set".

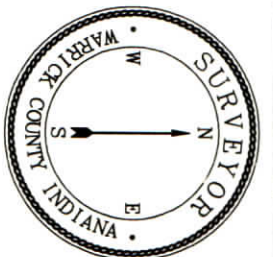
1" and 2.5" iron pipes (adjacent) were tied in on the Lynch Road Route Survey (Doc. 2001R014693)

VERIFICATION OF CORNER POSITION: May, 2003: the 2-1/2" pipe shown was found in place, flanked by a short section of 1-1/4" pipe. The 1-1/4" pipe, leaning southwesterly, was removed. The 2-1/2" pipe, bent southeasterly at the top, was found to be plumb and in good condition below 20" deep. Ties were made to property corner monuments along Stevenson Station Road and along the north side of SR 62 which correspond to corners shown on the 1963 Bottomley survey. Measured dimensions agreed reasonably well with plat dimensions (+/- 1 foot).

Perry E. Jones 7/25/03

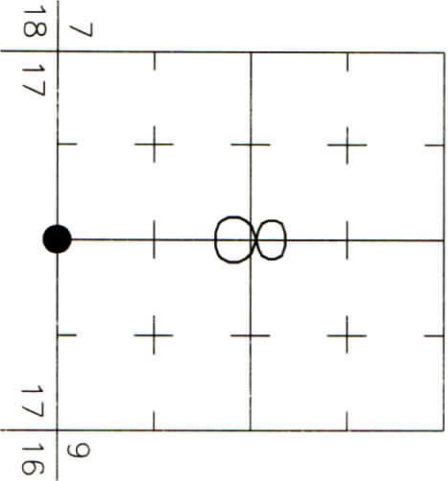
CORNER RECORD
WARRICK COUNTY

WARRICK COUNTY SURVEYOR
KARAN HARGRAVE-BARNHILL



DESCRIPTION:
SOUTHWEST CORNER SOUTHEAST QUARTER
SECTION 8, T. 6 S., R. 9 W.
2nd PRINCIPAL MERIDIAN

INDICATE CORNER REFERENCED:



STATE PLANE COORDINATE DATA:
INDIANA WEST ZONE, NAD 83 (1997)
U.S. SURVEY FEET

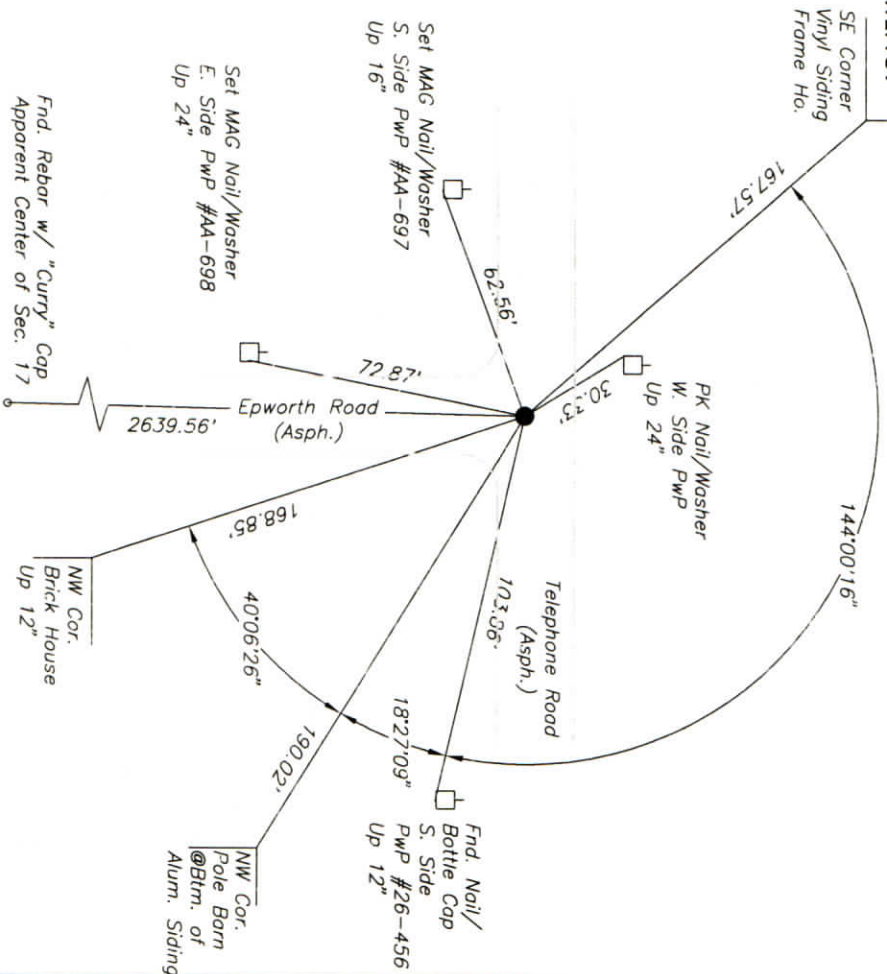
X ---
Y ---
COORDINATES ESTABLISHED BY:

APPROVED BY:

DATE:

MONUMENT TYPE: IRON PIPE
SIZE: 1" O.D.
DEPTH/HEIGHT: 6" BELOW PVMT. GRADE
REFERENCE TIE DRAWING:

FOR NOTES ON CORNER HISTORY SEE REVERSE.



REFERENCED BY: D.DREES/R.HARLAN
APPROVED BY: P.JONES, RLS#9600016

DATE: 9/19/02
DATE: 9/25/02

CORNER FILE CODE:
T6S-R9W-J-07

CORNER HISTORY:

CORNER FILE CODE:
T6S-R9W-J-07

ORIGINAL USPLS SURVEY: Corner established by Jacob Fowler, Dec., 1805 (missing notes).

COUNTY SURVEYOR'S BOOKS: Book 1 P. 129: John C. Frary WCS Dec. 17, 1859 "Oak tree cut down - stake driven"

Book 3 P. 244: G.M.Emmerson Dep. WCS Oct. 13, 1919 "...a small stake was found".

OTHER SURVEYS AND PLATS: "Corner Code System" card shows a reference (mon. not identified) with the notation "NV" (not verified).

Survey notes for the INDOT route survey of S.R. 62, dated December, 1990, show ties and references to a 1-1/4" iron pipe, 6" below grade, and approximately 2' south of the centerline of Telephone Rd.

"IP Found" is shown on plats of survey by John W. Curry dated 1997 (Doc's. 1998R-001225 & 6).

3/4" Pipe Found is shown on plat of survey by Danny K. Leek (Doc. 1998R-001641).

1-1/2" o.d. iron pipe 6" below grade and 2' south of the road centerline was tied in and referenced on Location Control Route Survey for Lynch Road Phase III (Doc. 2001R014693). (The same monument subsequently described as 1" o.d. iron pipe on Telephone Road Route Survey 2002.) The pipe's position is consistent with the INDOT S.R. 62 survey notes mentioned above. Two of the reference features from the Lynch Road Phase III survey (a power pole northwesterly of the corner and a catalpa tree southeasterly) appear likely to be the same features shown on the Corner Code System card; however, the reference distances indicate that the pipe located on the Lynch survey is approximately 2.8' southeasterly of the unidentified monument previously referenced on the Corner Code System card.

VERIFICATION OF CORNER POSITION: September, 2002: The 1" o.d. iron pipe shown was found in place, its position consistent with the above-mentioned S.R. 62 and Lynch Road surveys. Measured dimensions to monuments (approximately) 1/2 and 1 mile south were reasonably consistent with the John Curry and Danny Leek surveys. Despite the unexplained 2.8' discrepancy with the old Corner Code System reference, it appears this pipe has been commonly accepted as the corner in recent years.

Perry E. Jones 9/25/02

CORNER RECORD
WARRICK COUNTY

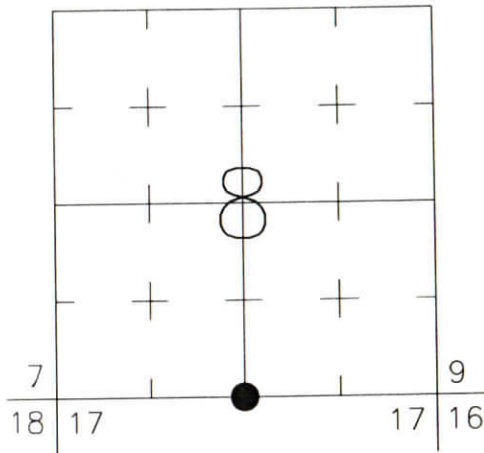


DESCRIPTION:
SOUTHWEST CORNER SOUTHEAST QUARTER
SECTION 8, T. 6 S., R. 9 W.
2nd PRINCIPAL MERIDIAN

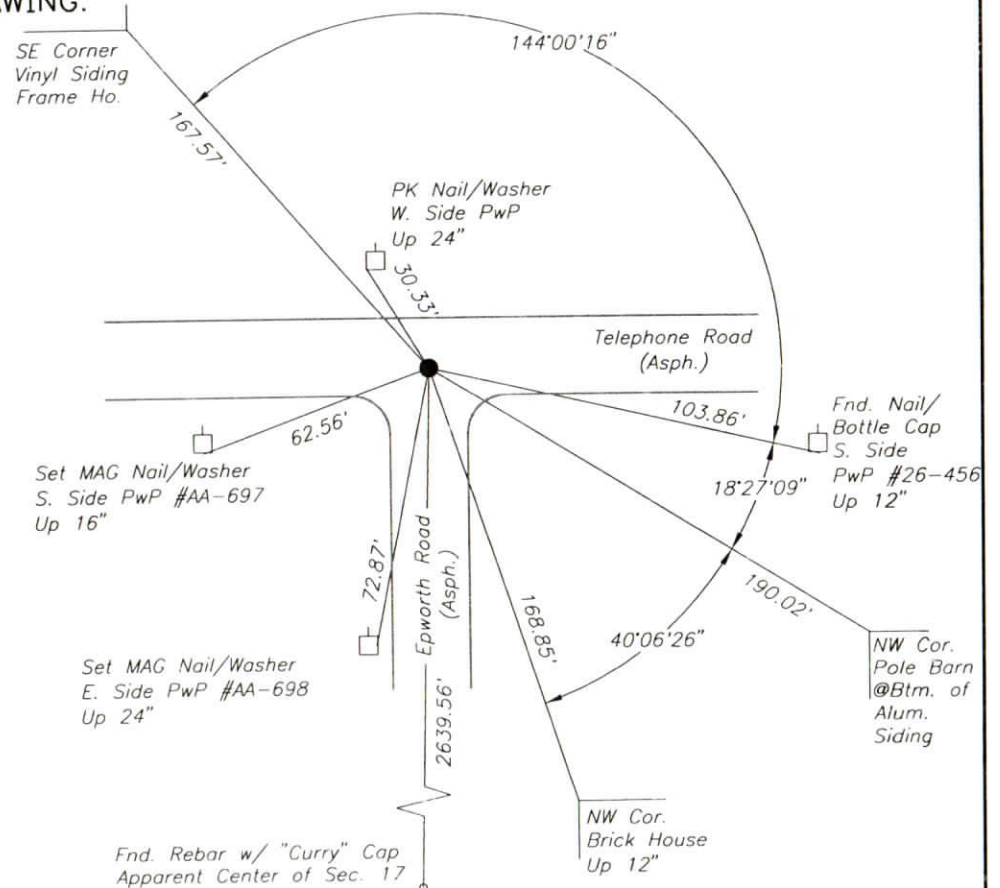
WARRICK COUNTY SURVEYOR
JAMES NIEMEYER

FOR NOTES ON CORNER HISTORY SEE REVERSE.

INDICATE CORNER REFERENCED:



MONUMENT TYPE: IRON PIPE
SIZE: 1" O.D.
DEPTH/HEIGHT: 6" BELOW PVMT. GRADE
REFERENCE TIE DRAWING:



STATE PLANE COORDINATE DATA:
INDIANA WEST ZONE, NAD 83 (1997)
U.S. SURVEY FEET

X ---

Y ---

COORDINATES ESTABLISHED BY:

APPROVED BY:

DATE:

Rev.: 9/9/05 Section
Number corrected. P.E.J.

Fnd. Rebar w/ "Curry" Cap
Apparent Center of Sec. 17

REFERENCED BY: D.DREES/R.HARLAN

DATE: 9/19/02

APPROVED BY: P.JONES, RLS#9600016

DATE: 9/25/02

CORNER FILE CODE:
T6S-R9W-J-07

CORNER HISTORY:

CORNER FILE CODE:
T6S-R9W-J-07

ORIGINAL USPLS SURVEY: Corner established by Jacob Fowler, Dec., 1805 (missing notes).

COUNTY SURVEYOR'S BOOKS: Book 1 P. 129: John C. Frary WCS Dec. 17, 1859 "Oak tree cut down - stake driven"

Book 3 P. 244: G.M.Emmerson Dep. WCS Oct. 13, 1919 "...a small stake was found".

OTHER SURVEYS AND PLATS: "Corner Code System" card shows a reference (mon. not identified) with the notation "NV" (not verified).

Survey notes for the INDOT route survey of S.R. 62, dated December, 1990, show ties and references to a 1-1/4" iron pipe, 6" below grade, and approximately 2' south of the centerline of Telephone Rd.

"IP Found" is shown on plats of survey by John W. Curry dated 1997 (Doc's. 1998R-001225 & 6).

3/4" Pipe Found is shown on plat of survey by Danny K. Leek (Doc. 1998R-001641).

1-1/2" o.d. iron pipe 6" below grade and 2' south of the road centerline was tied in and referenced on Location Control Route Survey for Lynch Road Phase III (Doc. 2001R014693). (The same monument subsequently described as 1" o.d. iron pipe on Telephone Road Route Survey 2002.) The pipe's position is consistent with the INDOT S.R. 62 survey notes mentioned above. Two of the reference features from the Lynch Road Phase III survey (a power pole northwesterly of the corner and a catalpa tree southeasterly) appear likely to be the same features shown on the Corner Code System card; however, the reference distances indicate that the pipe located on the Lynch survey is approximately 2.8' southeasterly of the unidentified monument previously referenced on the Corner Code System card.

VERIFICATION OF CORNER POSITION: September, 2002: The 1" o.d. iron pipe shown was found in place, its position consistent with the above-mentioned S.R. 62 and Lynch Road surveys. Measured dimensions to monuments (approximately 1/2 and 1 mile south) were reasonably consistent with the John Curry and Danny Leek surveys. Despite the unexplained 2.8' discrepancy with the old Corner Code System reference, it appears this pipe has been commonly accepted as the corner in recent years.

Perry E. Jones 9/25/02

CORNER RECORD
WARRICK COUNTY

DESCRIPTION:

NE CORNER SE 1/4

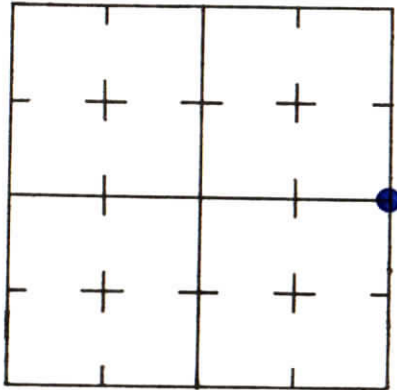
SECTION 8, T. 6 S. R. 9 W.

2nd PRINCIPLE MERIDIAN

WARRICK COUNTY SURVEYOR
MICHAEL IRVIN

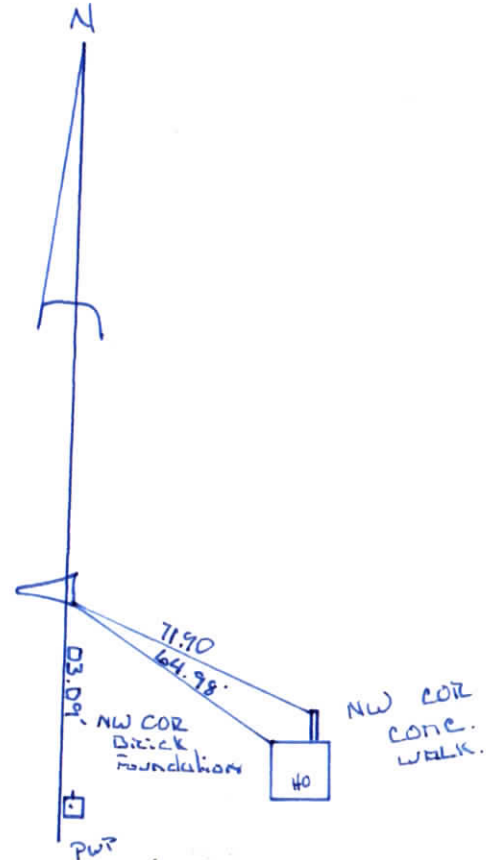


INDICATE CORNER REFERENCED



DESCRIBE CORNER REFERENCED

STONE, 2" Deep
SP. # 4
11-10-88



STATE PLANE COORDINATE DATA

INDIANA ZONE: WEST

X _____

Y _____

ESTABLISHED BY:

APPROVED BY

DATE

REFERENCED BY:

DATE

**CORNER RECORD
WARRICK COUNTY**



DESCRIPTION:

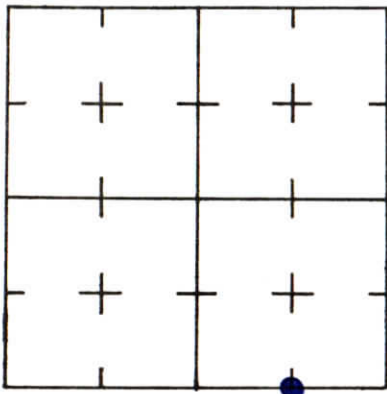
SE CORNER SW/4 SE/4

SECTION 8, T. 6 S. R. 9 W.

2nd PRINCIPLE MERIDIAN

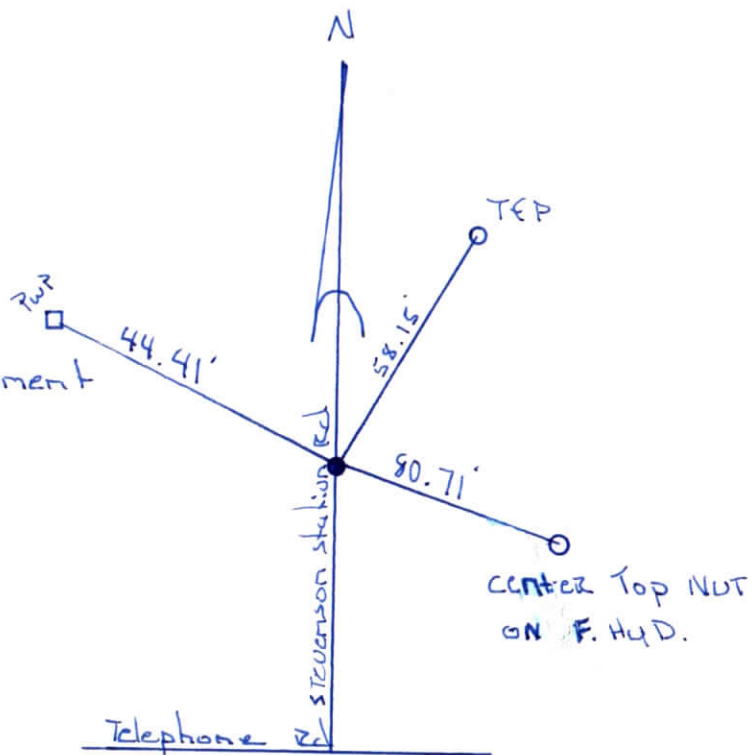
**WARRICK COUNTY SURVEYOR
MICHAEL IRVIN**

INDICATE CORNER REFERENCED



DESCRIBE CORNER REFERENCED

Type of Monument
: R.R. SPIKE
Depth
: 8" Deep
By J.P. #9
Date 11-10-88



STATE PLANE COORDINATE DATA

INDIANA ZONE: WEST

X _____

Y _____

ESTABLISHED BY:

APPROVED BY

DATE

REFERENCED BY:

DATE

CORNER RECORD
WARRICK COUNTY



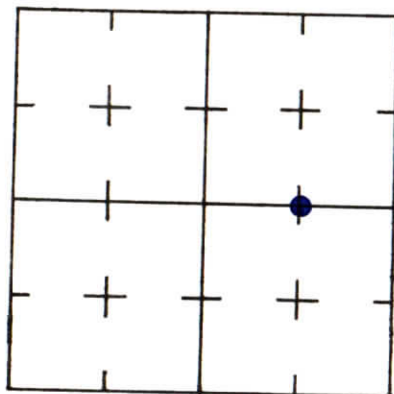
DESCRIPTION :

NW CORNER NE 1/4 SE 1/4

SECTION 8, T. 6 S. R. 9 W.
2nd PRINCIPLE MERIDIAN

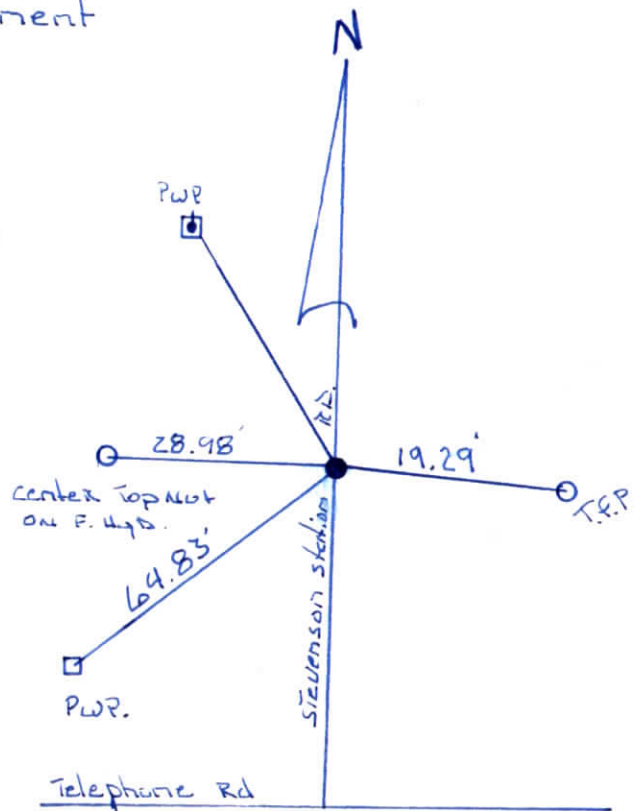
WARRICK COUNTY SURVEYOR
MICHAEL IRVIN

INDICATE CORNER REFERENCED



DESCRIBE CORNER REFERENCED

Type of Monument
: R.R. SPIKE
Depth
: 3" Deep
By S.P. # 19
Date 11-10-88



STATE PLANE COORDINATE DATA

INDIANA ZONE: WEST

X _____

Y _____

ESTABLISHED BY:

APPROVED BY

DATE

REFERENCED BY:

DATE

CORNER RECORD
WARRICK COUNTY



DESCRIPTION:

SW CORNER SW¹/₄ SW¹/₄

SECTION 8, T. 6 S.

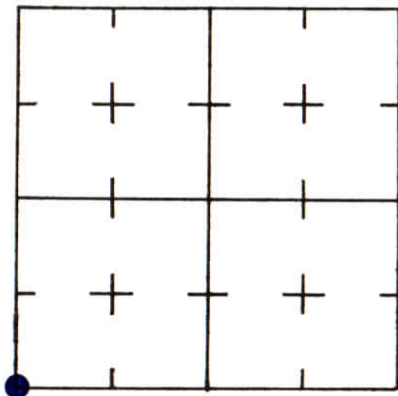
R. 9 W.

2nd PRINCIPLE MERIDIAN

WARRICK COUNTY SURVEYOR

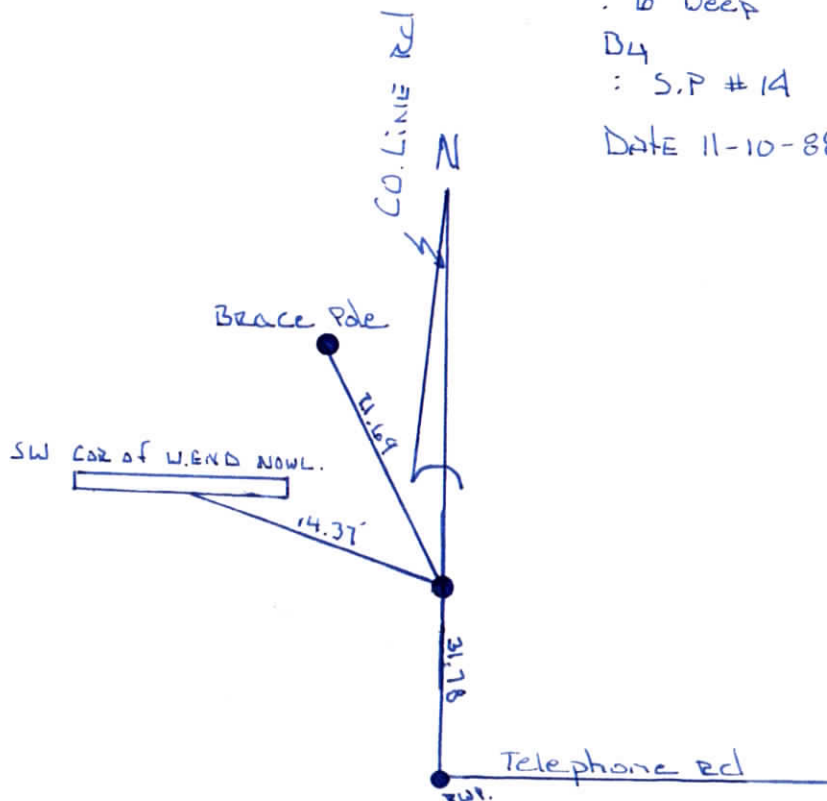
MICHAEL IRVIN

INDICATE CORNER REFERENCED



DESCRIBE CORNER REFERENCED

Type of Monument
: 1/4" I. PIPE
Depth
: 6" Deep
BY
: S.P # 14
DATE 11-10-88



STATE PLANE COORDINATE DATA

INDIANA ZONE: WEST

X _____

Y _____

ESTABLISHED BY:

APPROVED BY

DATE

REFERENCED BY:

DATE

CORNER RECORD
WARRICK COUNTY

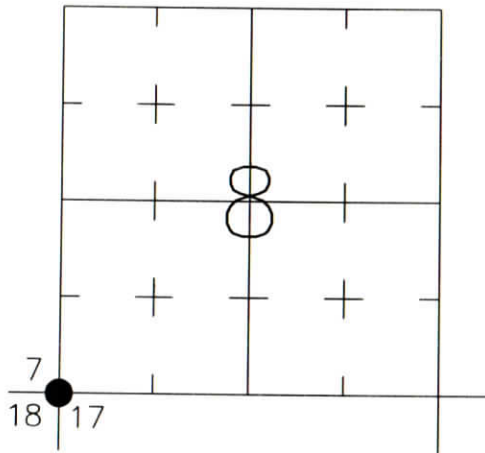


DESCRIPTION:

SOUTHWEST CORNER _____
SECTION 8, T. 6 S., R. 9 W.
2nd PRINCIPLE MERIDIAN

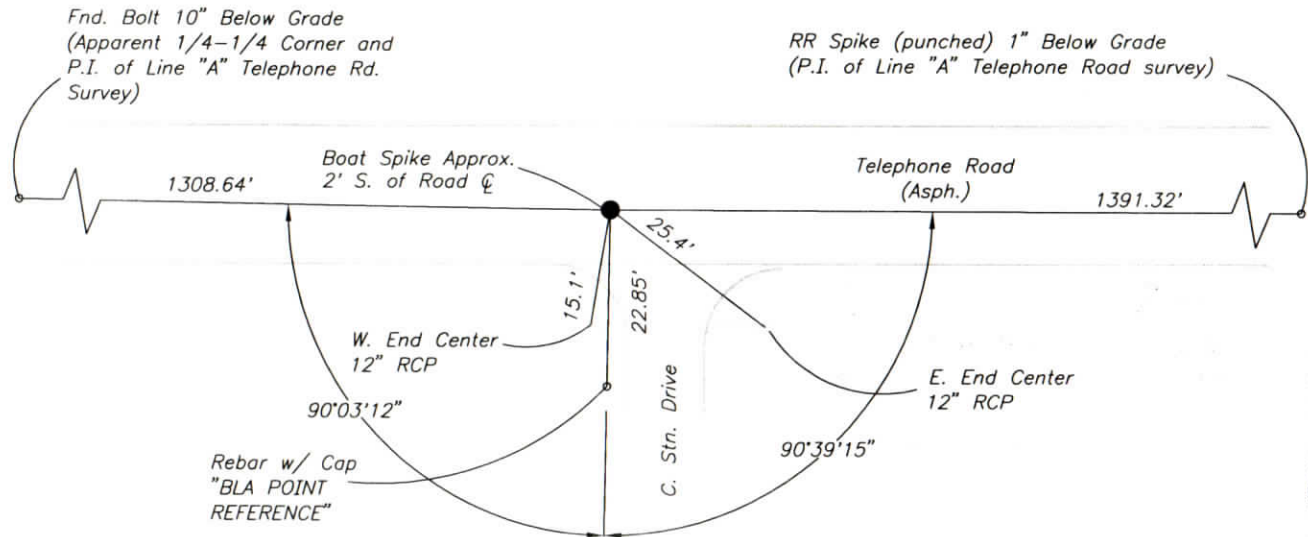
WARRICK COUNTY SURVEYOR
KARAN HARGRAVE-BARNHILL

INDICATE CORNER REFERENCED:



MONUMENT TYPE: BOAT SPIKE
SIZE:
DEPTH/HEIGHT: 2" BELOW PVMT. GRADE
REFERENCE TIE DRAWING:

FOR NOTES ON CORNER HISTORY SEE REVERSE.



STATE PLANE COORDINATE DATA:
INDIANA WEST ZONE, NAD 83 (1997)
U.S. SURVEY FEET

X _____

Y _____

COORDINATES ESTABLISHED BY:

APPROVED BY:

DATE:

REFERENCED BY: D.DREES/R.HARLAN

DATE: 9/19/02

APPROVED BY: P.JONES, RLS#9600016

DATE: 9/25/02

CORNER FILE CODE:
T6S-R9W-J-09

CORNER HISTORY:

CORNER FILE CODE:
T6S-R9W-J-09

ORIGINAL USPLS SURVEY: Corner established by Jacob Fowler, Dec., 1805 (missing notes).

COUNTY SURVEYOR'S BOOKS: Book 1 P. 30: Isaac Adams WCS Sept. 1, 1854 "Wood Post"

Book 1 P. 129: John C. Frary WCS Dec. 17, 1859 "Established by Adams".

OTHER SURVEYS AND PLATS: "Corner Code System" card shows ref. to I.P.

1/2" Pipe Found shown on plat of survey by Danny K. Leek (Doc. 1998R-001641).

A boat spike, 2" below grade, was tied in to the Telephone Road Route Survey (Bernardin-Lochmueller & Assoc.) 2002. The telephone and power poles shown on the old Corner Code System card reference were gone, but the boat spike's position relative to monuments found (approximately) 1/4 mile and 1/2 mile west matched the Danny Leek survey within 0.05 feet.

VERIFICATION OF CORNER POSITION: September, 2002: The boat spike shown was found in place and referenced. Checks were made to other alignment points from the Telephone Road survey (as shown).

COMMENTS/RECOMMENDATIONS: Planned future improvements to Telephone Road may provide the opportunity to search beneath pavement level for an old stone or other evidence to further verify this position.

Perry E. Jones 9/25/02

CORNER RECORD
WARRICK COUNTY

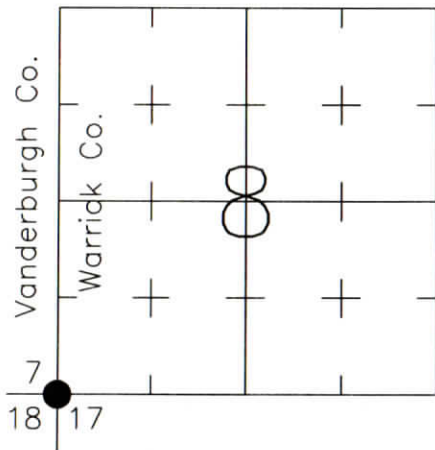


DESCRIPTION:
SOUTHWEST CORNER _____
SECTION 8, T. 6 S., R. 9 W.
2nd PRINCIPLE MERIDIAN

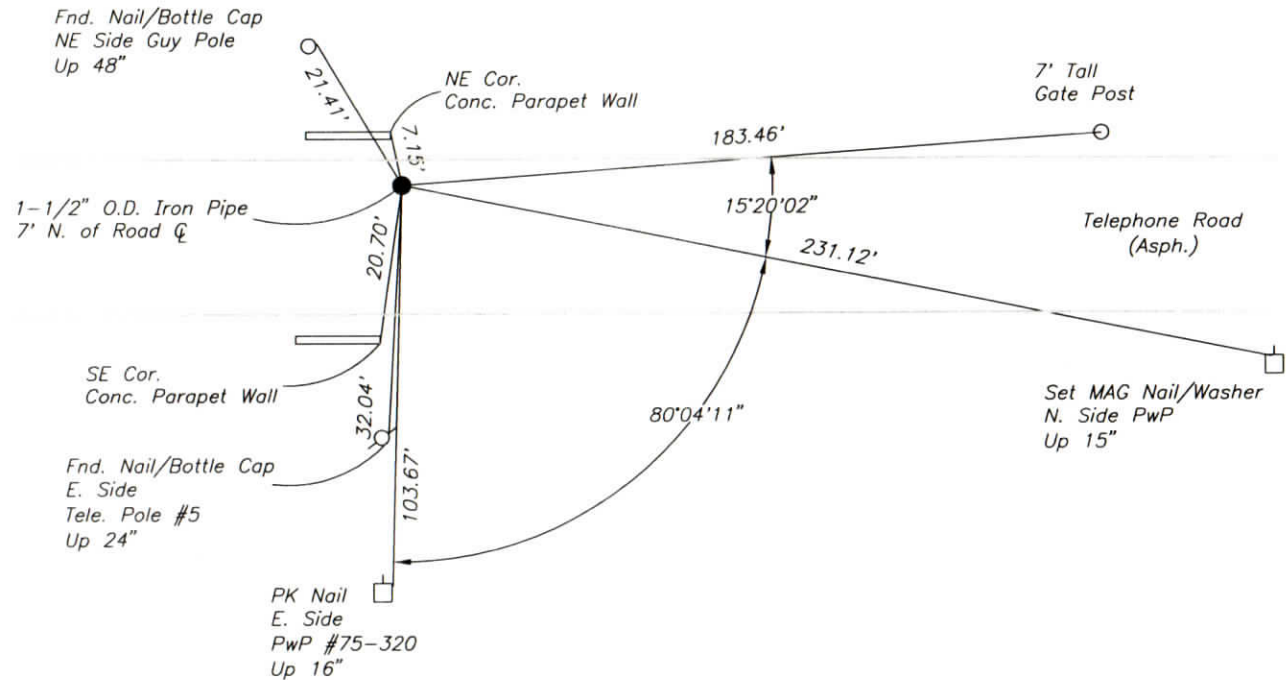
WARRICK COUNTY SURVEYOR
KARAN HARGRAVE-BARNHILL

FOR NOTES ON CORNER HISTORY SEE REVERSE.

INDICATE CORNER REFERENCED:



MONUMENT TYPE: IRON PIPE
SIZE: 1-1/2" O.D.
DEPTH/HEIGHT: 6" BELOW GRADE
REFERENCE TIE DRAWING:



STATE PLANE COORDINATE DATA:
INDIANA WEST ZONE, NAD 83 (1997)
U.S. SURVEY FEET

X 2847079.51

Y 1009877.98

COORDINATES ESTABLISHED BY:
Douglas G. McDonald, PE LS, Vand. Co.
Surveyor's Office
APPROVED BY:

DATE:

REFERENCED BY: D.DREES/G.M.BURRESS

DATE: 9/16/02

APPROVED BY: P.JONES, RLS#9600016

DATE: 9/25/02

CORNER FILE CODE:
T6S-R9W-J-05

CORNER HISTORY:

CORNER FILE CODE:
T6S-R9W-J-05

ORIGINAL USPLS SURVEY: Corner established by Jacob Fowler, Dec., 1805 (missing notes).

COUNTY SURVEYOR'S BOOKS: Vand. Co. Book B P. 207: J.K. Frick VCS March 25, 1861, Stone Marked "S7 T6 R9".

Book 3 P. 244: G.M.Emmerson Dep. WCS Oct. 13, 1919, "... center of small bridge at the corner of section"

OTHER SURVEYS AND PLATS: Vand. Co. "Corner Record" card shows ref. to 3/4" I. Pipe Pin 6" below grade.

Warrick Co. "Corner Record" cards show 1984 ref. to 1-1/2" Pipe, 1988 ref. to 1-1/4" Pipe by INDOT survey party.

1-1/2" iron pipe shown on plats of survey by John W. Curry dated 1997 (Doc's. 1998R-001225 & 6).

1-1/4" pipe 6" below grade tied in on Location Control Route Survey for Lynch Road Phase III (Doc. 2001R014693).

VERIFICATION OF CORNER POSITION: September, 2002: The iron pipe shown was found in place, its position consistent with Corner Record reference ties from both Vanderburgh and Warrick Counties. The pipe is approximately 7' north of the road centerline and approximately 8' east of the center of a concrete box culvert, which is reasonably consistent with the 1919 Warrick County Surveyor's note regarding the corner falling "in the center of a small bridge" (considering that some shifting of the roadway and ditch could have occurred during structure replacement).

Perry E. Jones 9/25/02

RECORD OF SECTION CORNERS

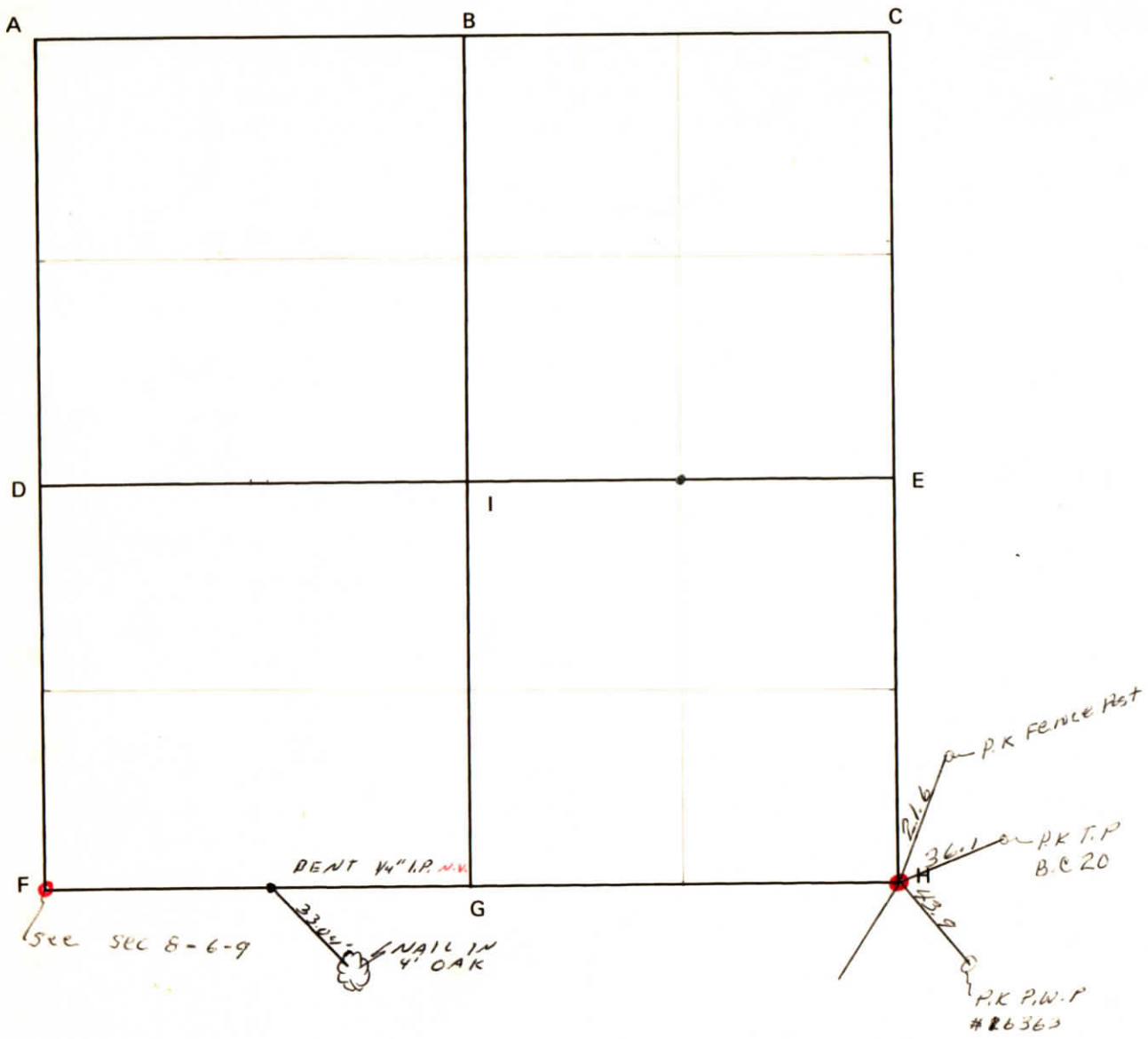
Warrick County

Section 8 Township 6 South Range 9 West 2nd Principle Meridian

Date	Cor	Location	Description of		Distance from Corner	Bearing from Corner (North Assumed)	Cond	Check By	Remarks
			Monument	Reference					
	A								
	B								
	C		North to						
	D		STONE						NE cor. NE1/4
	E		Stone						NE cor. NE1/4
	F								
12-10-74	G	SW cor. SE 1/4	1/2" rebar .3' below road surface	1) PK nail 2) PK nail 3) PK nail	55.4 26.7 27.4	S 19° E S 28° W N 30° W	fair	GAT	Found in place In 3' catalpha tree In PWP BC 12/2 In tele. pole # 81
12-10-74	H	SE cor.	1/2" iron pipe	1) PK nail 2) PK nail NORA	30.0 34.9	S 53° W N 39° W	poor	GAT	Found in place In PWP # 26727 In tele. pole
3/1940	I	NW cor. NW1/4 SE1/4	iron pin						SWC

CORNER CODE SYSTEM
Warrick County

NOTES



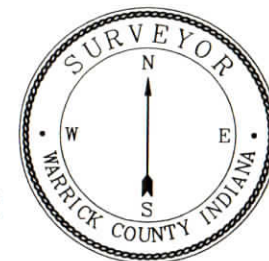
RECORD OF SECTION CORNERS

Warrick County

Section 9 Township 6 South Range 9 West 2nd Principle Meridian

Date	Cor	Location	Description of		Distance from Corner	Bearing from Corner (North Assumed)	Cond	Check By	Remarks
			Monument	Reference					
	A								
	B								
	C								
	D								
	E								
12-10-74	F	SW cor.	1/2" iron pipe	1) PK nail 2) PK nail NORA	30.0' 34.9'	S 53° W N 39° W	poor	GAT	Found in place In PWP # 26727 In tele. pole
	G								
12-6-74	H	SE cor.	1" iron pipe	1) PK nail 2) PK nail 3) PK nail	21.6' 36.1' 43.9'	N 06° E N 60° E S 50° E	poor	GAT	Found in place In old fence post In tele. pole BC 20 In PWP #16363

CORNER RECORD WARRICK COUNTY

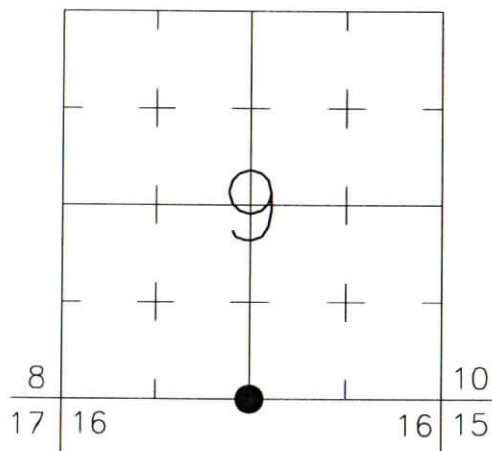


DESCRIPTION:
SOUTHWEST CORNER SOUTHEAST QUARTER
SECTION 9, T. 6 S., R. 9 W.
2nd PRINCIPAL MERIDIAN

WARRICK COUNTY SURVEYOR
JAMES NIEMEIER

FOR NOTES ON CORNER HISTORY SEE REVERSE.

INDICATE CORNER REFERENCED:



MONUMENT TYPE: REBAR
SIZE: 5/8" DIA.
DEPTH/HEIGHT: 2" BELOW PVMT. GRADE
REFERENCE TIE DRAWING:

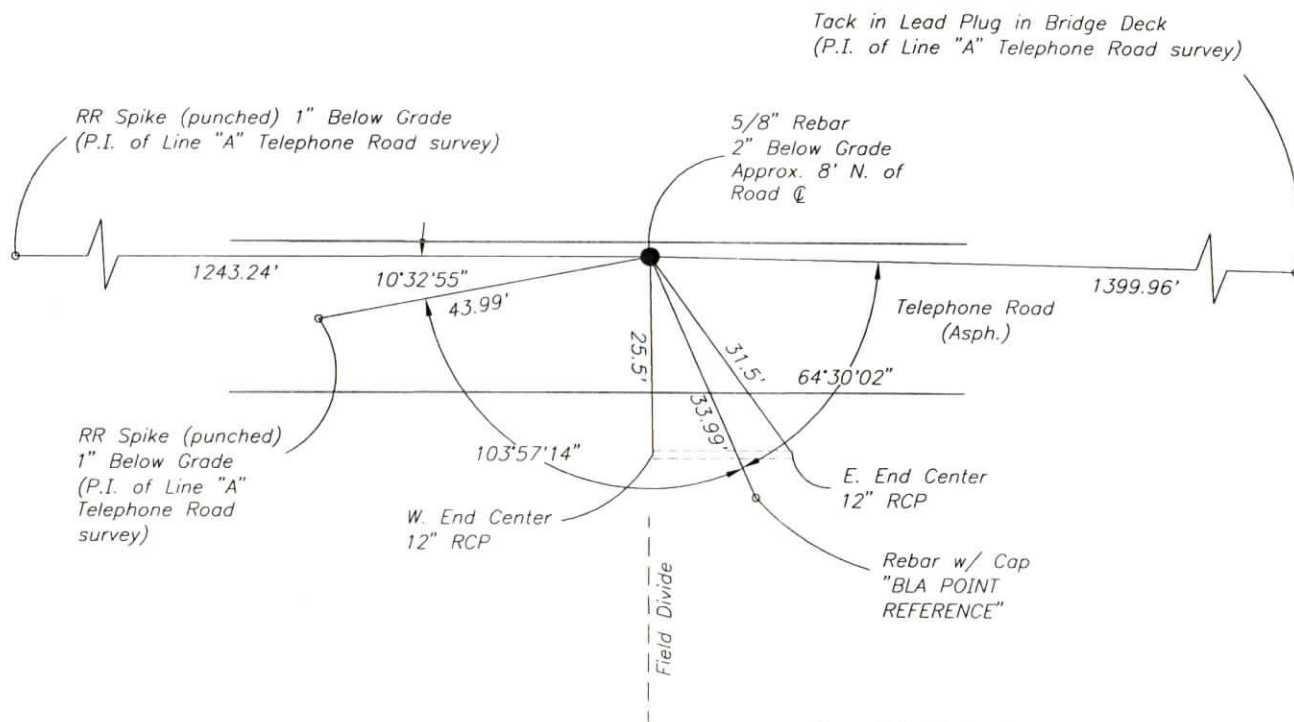
STATE PLANE COORDINATE DATA:
INDIANA WEST ZONE, NAD 83 (1997)
U.S. SURVEY FEET

X ---
Y ---

COORDINATES ESTABLISHED BY:

APPROVED BY:

DATE:



REFERENCED BY: D.DREES/K.KLEIN

DATE: 9/19/02

APPROVED BY: P.JONES, RLS#9600016

DATE: 9/25/02

Rev.: 9/9/05 Section Number corrected. P.E.J.

CORNER FILE CODE:
T6S-R9W-J-11

CORNER HISTORY:

CORNER FILE CODE:
T6S-R9W-J-11

ORIGINAL USPLS SURVEY: Corner established by Jacob Fowler, Dec., 1805 (missing notes).

COUNTY SURVEYOR'S BOOKS: Book 1 P. 30: Isaac Adams WCS Sept. 1, 1854 "Wood Post"

OTHER SURVEYS AND PLATS: No Co. Surv. references, no recorded surveys/subdivisions found.

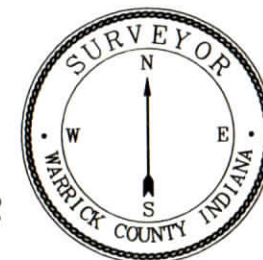
A 5/8" rebar was found and tied in to the Telephone Road Route Survey (Bernardin-Lochmueller & Assoc.) 2002. This rebar was shown on a previous survey of Telephone Road by Warrick Engineering (1990-1991) as "Found 5/8" I.P. at aerial panel".

VERIFICATION OF CORNER POSITION: September, 2002: The rebar shown was found in place and referenced. Checks were made to verify its position relative to Telephone Road alignment points (as shown). The history of this rebar prior to the Warrick Engineering survey of Telephone Road is unknown. No deeds were found which would help verify its position. The rebar is located approximately 3' west and 17' north of the midpoint between the southwest and southeast corners of Section 9. It is approximately in line with a field divide running to the south. The rebar was accepted as the apparent corner only on the basis that it is an existing monument, reasonably consistent with possession lines and record chainage, and no contradictory evidence was found.

COMMENTS/RECOMMENDATIONS: Planned future improvements to Telephone Road may provide the opportunity to search beneath pavement level for an old stone or other evidence to further verify this position.

Perry E. Jones 9/25/02

CORNER RECORD WARRICK COUNTY

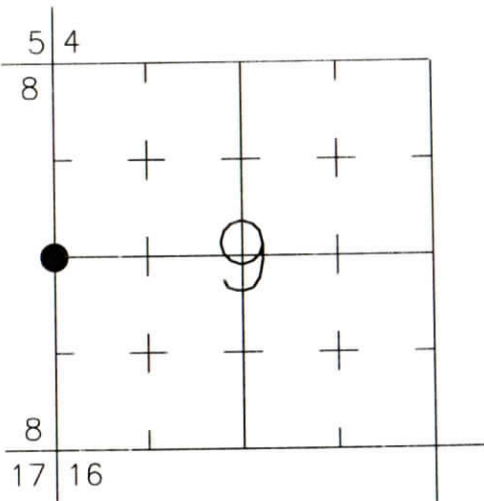


DESCRIPTION:
SOUTHWEST CORNER NORTHWEST QUARTER
 SECTION 9, T. 6 S., R. 9 W.
 2nd PRINCIPAL MERIDIAN

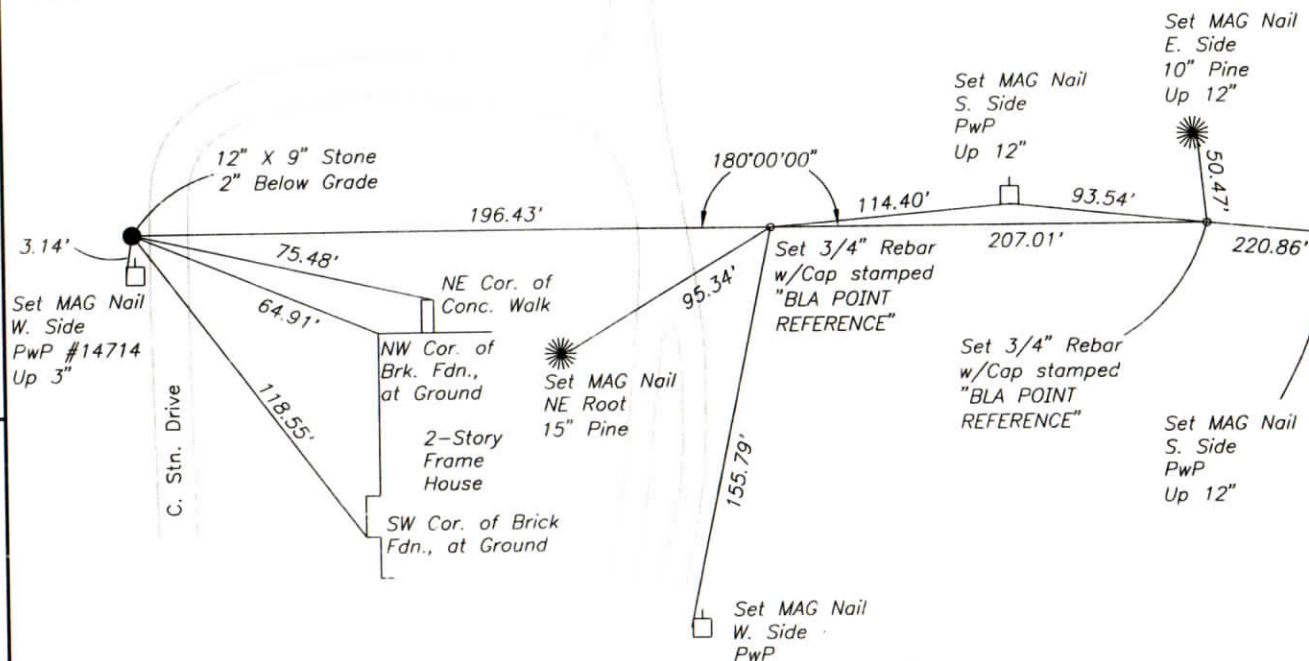
WARRICK COUNTY SURVEYOR
 KARAN HARGRAVE-BARNHILL

FOR NOTES ON CORNER HISTORY SEE REVERSE.

INDICATE CORNER REFERENCED:



MONUMENT TYPE: STONE
 SIZE: 12" X 9"
 DEPTH/HEIGHT: 2" BELOW GRADE
 REFERENCE TIE DRAWING:



STATE PLANE COORDINATE DATA:
 INDIANA WEST ZONE, NAD 83 (1997)
 U.S. SURVEY FEET

X ----

Y ----

COORDINATES ESTABLISHED BY:

APPROVED BY:

DATE:

REFERENCED BY: R.K.HAHN/J.CRANE

APPROVED BY: P.JONES, RLS#9600016

DATE: 3/14/03

DATE: 5/15/03

CORNER FILE CODE:
 T6S-R9W-G-09

CORNER HISTORY:

CORNER FILE CODE:
T6S-R9W-G-09

ORIGINAL USPLS SURVEY: Corner established by Jacob Fowler, Dec. 23, 1805 "Post".

COUNTY SURVEYOR'S BOOKS: Book 1 P. 129: John C. Frary WCS Dec. 17, 1859 "Gum standing and ____ of the other original witness trees"

Book 2 P. 1: O.B. Pasco WCS March 25, 1879 "Catalpa Post marked 1/2 S 9"

OTHER SURVEYS AND PLATS: "Corner Record" card shows reference to Stone 2" below grade (ref. by INDOT survey party 1988).

Stone 2" below grade tied to Telephone Road Route Survey (Bernardin-Lochmueller & Assoc.) 2002.

VERIFICATION OF CORNER POSITION: May, 2003; the stone shown was found in place, consistent with the 1988 reference ties.
Perry E. Jones 5/15/03

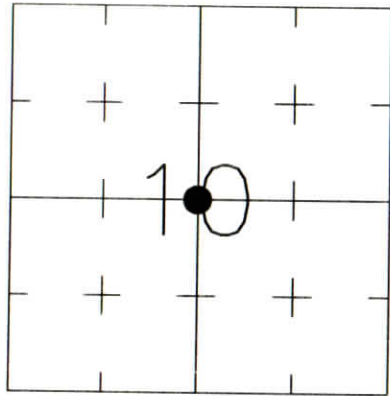
CORNER RECORD WARRICK COUNTY



DESCRIPTION:
 SOUTHWEST CORNER NORTHEAST QUARTER
 SECTION 10, T. 6 S., R. 9 W.
 2nd PRINCIPAL MERIDIAN

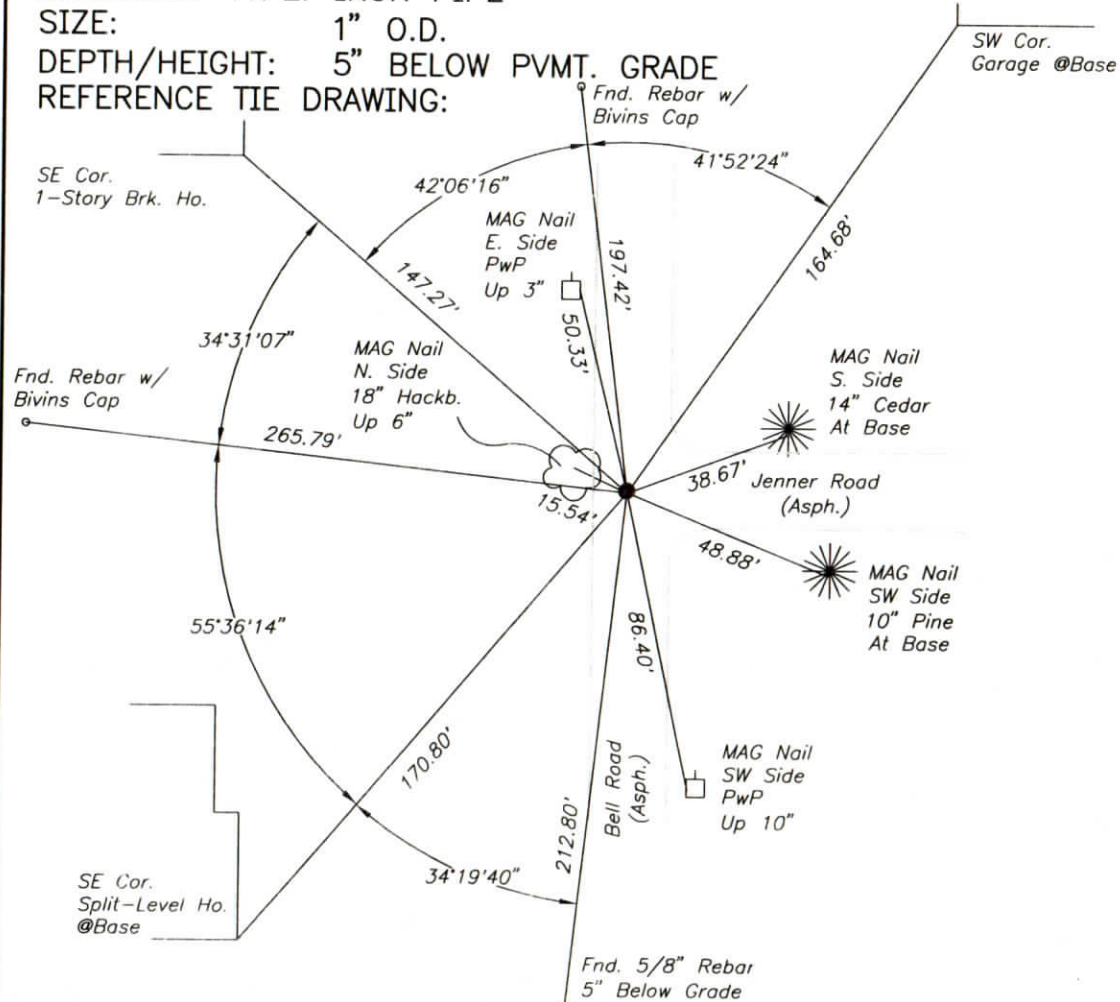
WARRICK COUNTY SURVEYOR
 KARAN HARGRAVE-BARNHILL

INDICATE CORNER REFERENCED:



MONUMENT TYPE: IRON PIPE
 SIZE: 1" O.D.
 DEPTH/HEIGHT: 5" BELOW PVMT. GRADE
 REFERENCE TIE DRAWING:

FOR NOTES ON CORNER HISTORY SEE REVERSE.



STATE PLANE COORDINATE DATA:
 INDIANA WEST ZONE, NAD 83 (1997)
 U.S. SURVEY FEET

X _____

Y _____

COORDINATES ESTABLISHED BY:

APPROVED BY:

DATE:

REFERENCED BY: R.K.HAHN/J.CRANE

DATE: 3/12/03

APPROVED BY: P.JONES, RLS#9600016

DATE: 5/14/03

CORNER FILE CODE:
 T6S-R9W-G-15

CORNER HISTORY:

CORNER FILE CODE:
T6S-R9W-G-15

ORIGINAL USPLS SURVEY: (Center of Section not monumented by USPLS Survey)

COUNTY SURVEYOR'S BOOKS: Book 1 P. 96: John C. Frary WCS Mar. 30, 1858 "Stone, marked"

OTHER SURVEYS AND PLATS: "Corner Record" card shows 1973 reference to 1" iron pipe.

1" iron pipe found and tied to Telephone Road Route survey (Bernardin-Lochmueller & Assoc.) 2002.

VERIFICATION OF CORNER POSITION: March, 2003; the iron pipe shown was found in place. Its position is not consistent with that shown graphically on the 1973 reference card; however, ties were made to several nearby property corner monuments along the west side of Bell Road which conformed reasonably well with deed dimensions.

Perry E. Jones 5/14/03

CORNER RECORD
WARRICK COUNTY



DESCRIPTION:

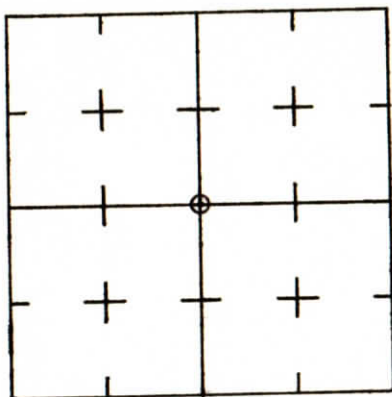
NE CORNER SW¹/₄

SECTION 10, T. 6 S. R. 9 W.

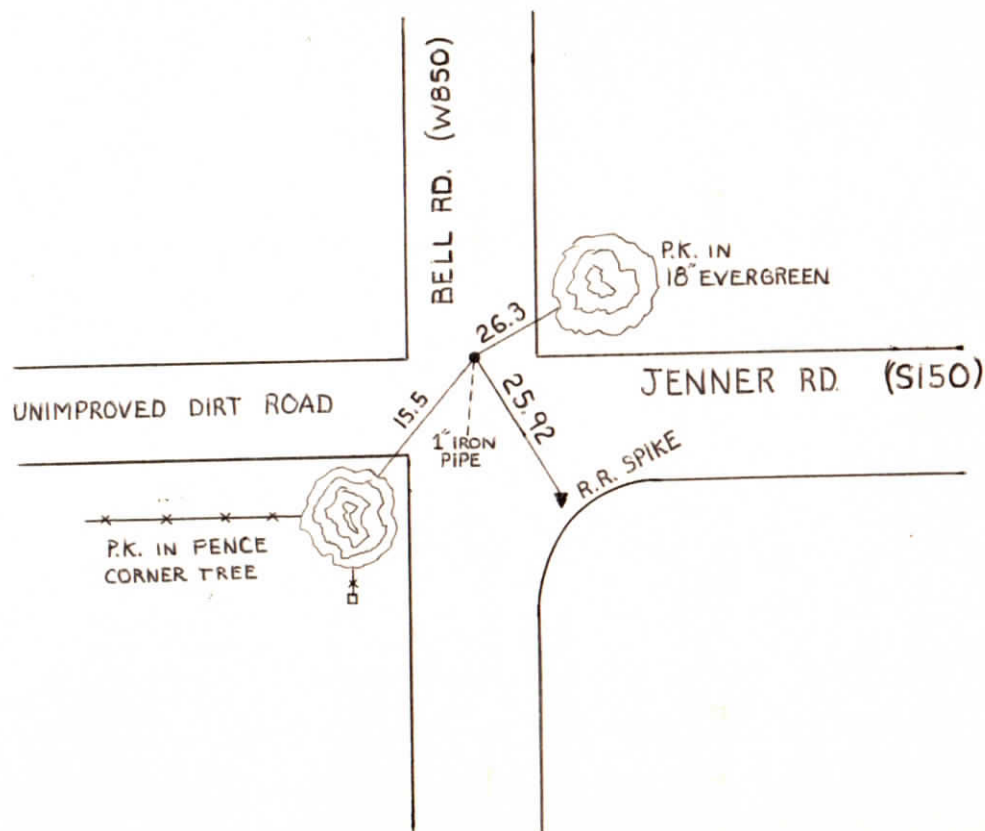
2nd PRINCIPLE MERIDIAN

WARRICK COUNTY SURVEYOR
MICHAEL IRVIN

INDICATE CORNER REFERENCED



DESCRIBE CORNER REFERENCED



STATE PLANE COORDINATE DATA

INDIANA ZONE: WEST

X _____

Y _____

ESTABLISHED BY:

APPROVED BY

DATE
9-28-73

REFERENCED BY:

DATE

NE COR. SW 1/4

~~000059~~

SE cor NW 1/4 & NW cor SW 1/4 sec 10 T65R94

Type Monument: 1" iron pipe

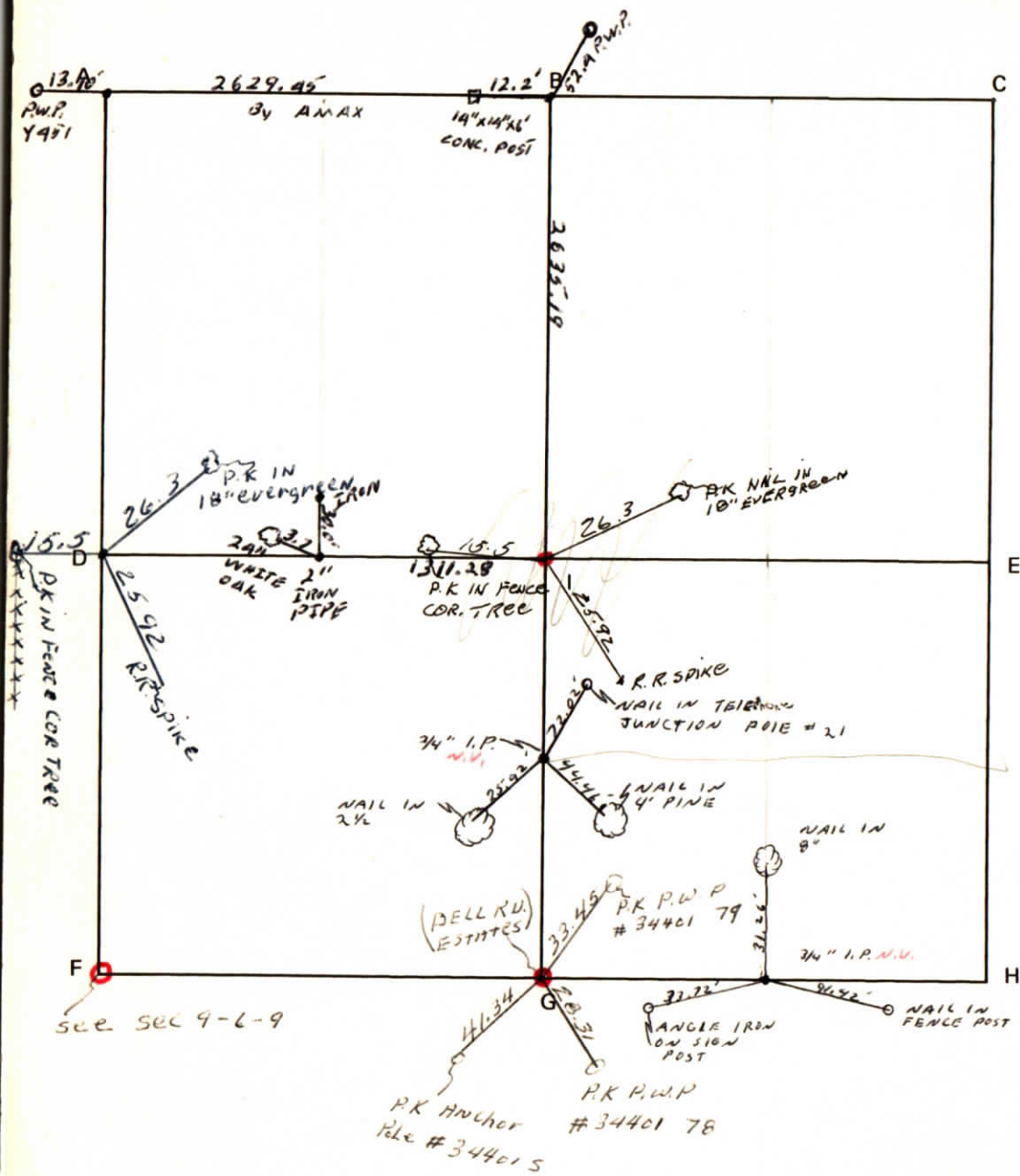
Date referenced: 9/28/73

referenced by: SWC

7-2-74
pet

CORNER CODE SYSTEM
Warrick County

NOTES



RECORD OF SECTION CORNERS

Warrick County

Section 10 Township 6 South Range 9 West 2nd Principle Meridian

Date	Cor	Location	Description of		Distance from Corner	Bearing from Corner (North Assumed)	Cond	Check By	Remarks
			Monument	Reference					
	A								
	B								
	C								
9/28/73	D		iron pin	1) pk in 18" evergreen	26.3				SWC
	E			2) R.r. spike	25.92				
				3) pk in fence cor. tree	15.5				
12 -6-74	F	SW cor.	1" iron pipe	1) PK nail	21.6'	N 06° E	poor	GAT	Found in place In old fence post In tele. pole BC 20 In PWP #16363
				2) PK nail	36.1'	N 60° E			
				3) PK nail	43.9'	S 50° E			
6-26-74	G	SW cor SE 1/4	1" iron pipe	1) PK nail	33.45'	N 33° E	good	GAT	Found in place In PWP # 34401 79 In PWP # 34401 78 In anchor pole 34401S
				2) PK nail	28.31'	S 39° E			
				3) PK nail	41.34'	S 62° W			
	H								
9-28-73	I	NE cor. SW 1/4	1" iron pipe over 3/8" iron pin in conc.	1) PK nail	38.90'	N 63° E	good	GAT	Found in place In evergreen Base of ROAD sign In Hackberry tree
				2) Sign post	42.38'	S 35° E			
				3) PK nail	15.47'	S 79° W			

CORNER RECORD
WARRICK COUNTY

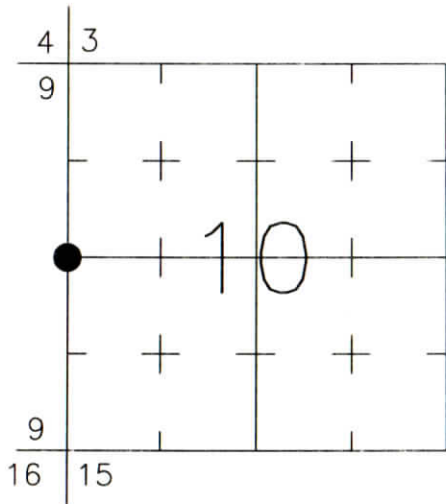


DESCRIPTION:
SOUTHWEST CORNER NORTHWEST QUARTER
SECTION 10, T. 6 S., R. 9 W.
2nd PRINCIPAL MERIDIAN

WARRICK COUNTY SURVEYOR
KARAN HARGRAVE-BARNHILL

FOR NOTES ON CORNER HISTORY SEE REVERSE.

INDICATE CORNER REFERENCED:



MONUMENT TYPE: ALUMINUM DISK
SIZE: 3-1/4" DIAM.
DEPTH/HEIGHT: FLUSH
REFERENCE TIE DRAWING:

STATE PLANE COORDINATE DATA:
INDIANA WEST ZONE, NAD 83 (1997)
U.S. SURVEY FEET

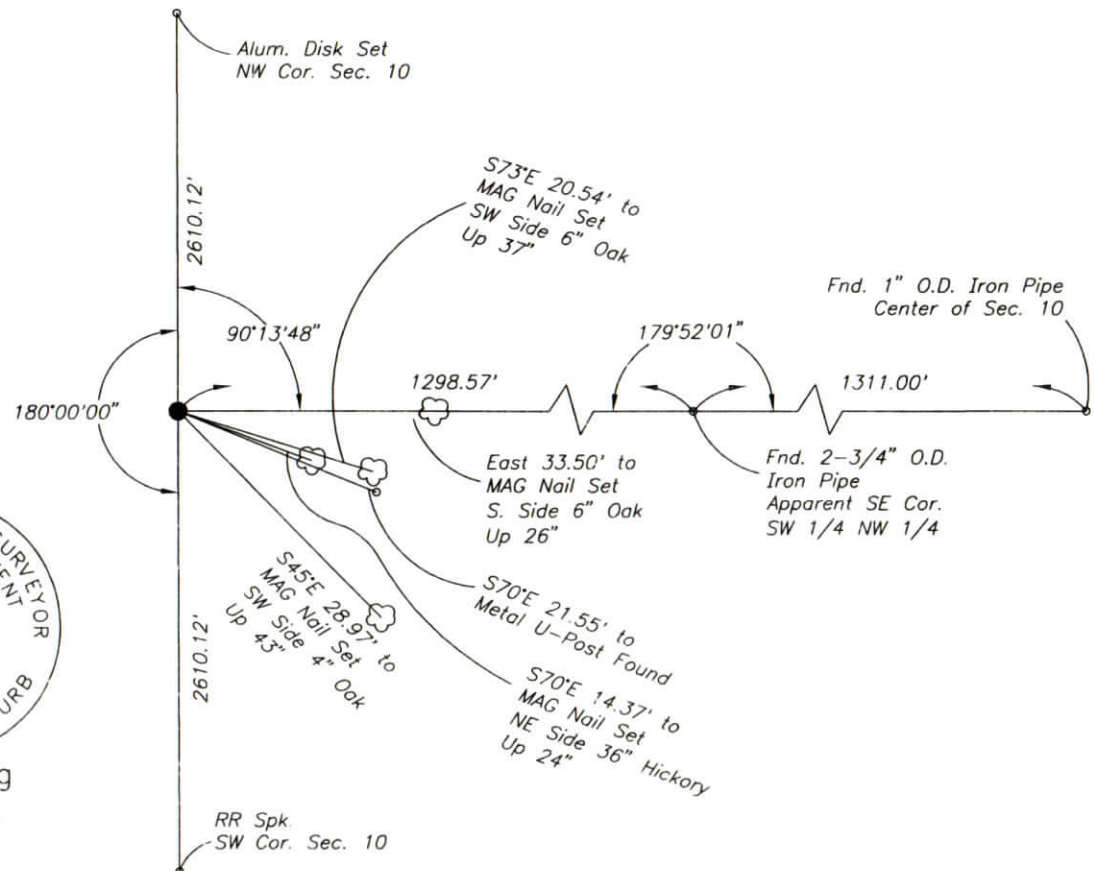
X _____

Y _____

COORDINATES ESTABLISHED BY:

APPROVED BY:

DATE:



Stamping
on Disk

REFERENCED BY: D.DREES/G.M.BURRESS

DATE: 5/23/03

APPROVED BY: P.JONES, RLS#9600016

DATE: 5/29/03

CORNER FILE CODE:
T6S-R9W-G-13

CORNER HISTORY:

CORNER FILE CODE:
T6S-R9W-G-13

ORIGINAL USPLS SURVEY: Corner established by Jacob Fowler, Dec. 23, 1805 "Post".

COUNTY SURVEYOR'S BOOKS: Book 1 P. 96: John C. Frary WCS Mar. 30, 1858 "Wood Post. Old trees - one standing and one down"

Book 3 P. 77: J.H.Wilke WCS Nov. 1905 "Stone, from former survey"

OTHER SURVEYS AND PLATS: Metal U-Post found, bent over, tied to Telephone Road Route Survey (Bernardin-Lochmueller & Assoc.) 2002.

VERIFICATION OF CORNER POSITION: May, 2003; the metal U-Post considered a questionable monument of unknown origin, ties were made to other monuments in the west half of Section 10 and the corner location was re-established at the midpoint of the west line of the section. This re-established position falls about 8' north and 20' west of the metal post, or about 2.8' north and 12.5' east of the location which would result from using monuments found marking the southeast and southwest corners of the SE 1/4 NW 1/4 of Section 10, projecting westward at a matching bearing and distance. The aluminum disk was placed as shown.

Perry E. Jones 5/29/03

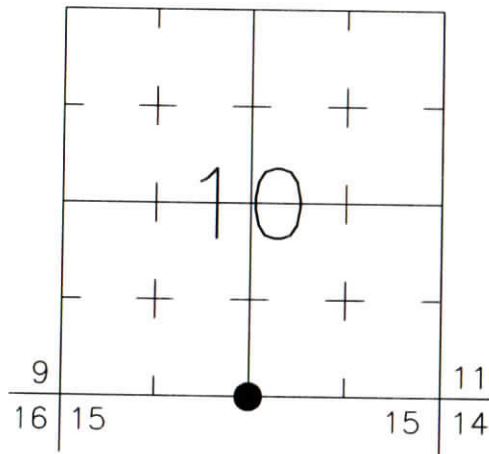
CORNER RECORD
WARRICK COUNTY



DESCRIPTION:
SOUTHWEST CORNER SOUTHEAST QUARTER
SECTION 10, T. 6 S., R. 9 W.
2nd PRINCIPLE MERIDIAN

WARRICK COUNTY SURVEYOR
KARAN HARGRAVE-BARNHILL

INDICATE CORNER REFERENCED:



MONUMENT TYPE: RAILROAD SPIKE (PUNCHED)
SIZE:
DEPTH/HEIGHT: 2" BELOW GRADE
REFERENCE TIE DRAWING:

FOR NOTES ON CORNER HISTORY SEE REVERSE.

STATE PLANE COORDINATE DATA:
INDIANA WEST ZONE, NAD 83 (1997)
U.S. SURVEY FEET

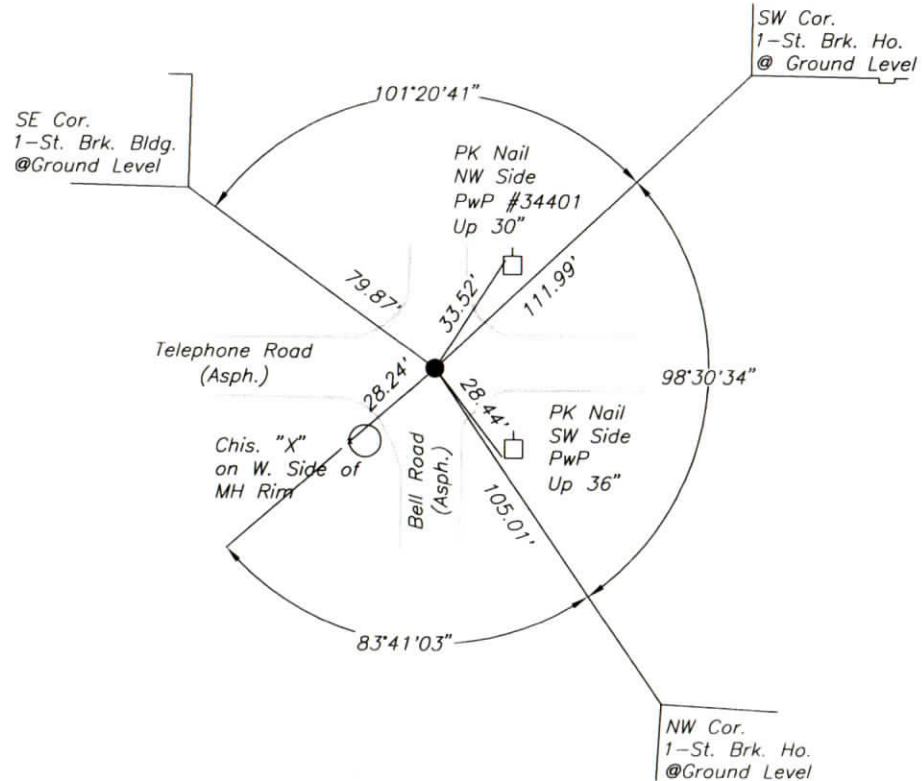
X ---

Y ---

COORDINATES ESTABLISHED BY:

APPROVED BY:

DATE:



REFERENCED BY: D.DREES/R.HARLAN

DATE: 9/19/02

APPROVED BY: P.JONES, RLS#9600016

DATE: 9/26/02

CORNER FILE CODE:
T6S-R9W-J-15

CORNER HISTORY:

CORNER FILE CODE:
T6S-R9W-J-15

ORIGINAL USPLS SURVEY: Corner established by Jacob Fowler, Dec., 1805 (missing notes).

COUNTY SURVEYOR'S BOOKS: Book 1 P. 96: John C. Frary WCS Mar. 30, 1858 Stone, marked"

Book 3 P. 77: J.H.Wilke WCS Nov. 1905 "Pump sleeve formerly established for corner"

OTHER SURVEYS AND PLATS: "Corner Code System" card shows ref. from Bell Rd. Estates (mon. not identified). "Corner Record" cards show 1977 reference to 1" IP taken from plat of Bell Terrace, and 1984 reference to 1--1/2" Pipe.

RR Spike (Punched) was found and tied in to Telephone Road Route Survey (Bernardin-Lochmueller & Assoc.) 2002.

VERIFICATION OF CORNER POSITION: September 2002: The railroad spike shown was found in place, its position consistent with the 1977 and 1984 Corner Record Card reference ties (+/- 0.11')

COMMENTS/RECOMMENDATIONS: Planned future improvements to Telephone Road may provide the opportunity to search beneath pavement level for an old stone or other evidence to further verify this position.

Perry E. Jones 9/26/02

CORNER RECORD
WARRICK COUNTY



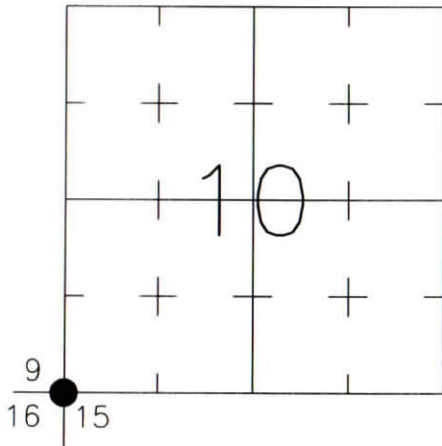
DESCRIPTION:

SOUTHWEST CORNER _____
SECTION 10, T. 6 S., R. 9 W.
2nd PRINCIPLE MERIDIAN

WARRICK COUNTY SURVEYOR
KARAN HARGRAVE-BARNHILL

FOR NOTES ON CORNER HISTORY SEE REVERSE.

INDICATE CORNER REFERENCED:



MONUMENT TYPE: RAILROAD SPIKE
SIZE:
DEPTH/HEIGHT: 8" BELOW PVMT. GRADE
REFERENCE TIE DRAWING:

STATE PLANE COORDINATE DATA:
INDIANA WEST ZONE, NAD 83 (1997)
U.S. SURVEY FEET

X ----

Y ----

COORDINATES ESTABLISHED BY:

APPROVED BY:

DATE:

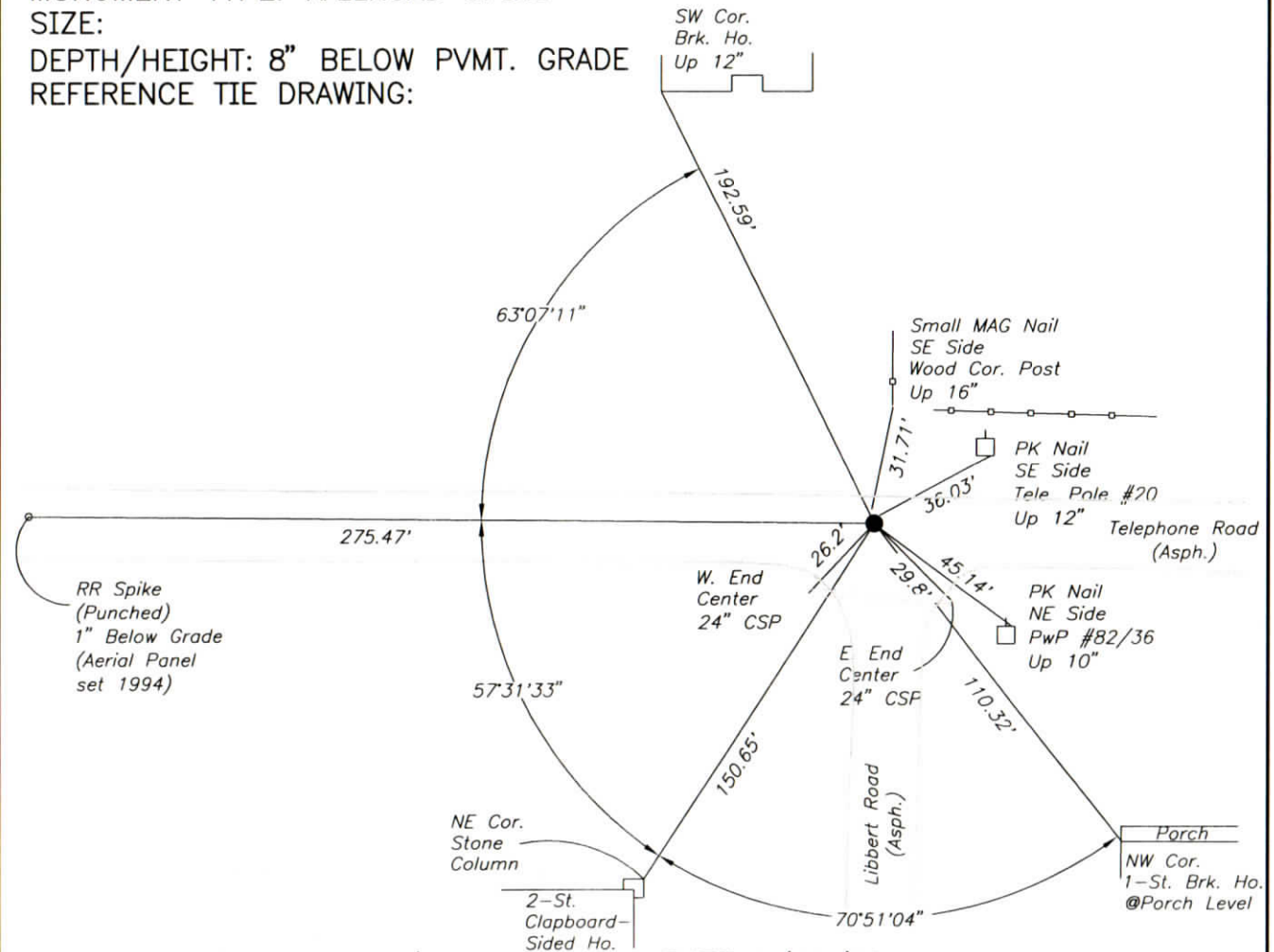
REFERENCED BY: D.DREES/R.HARLAN

DATE: 9/19/02

APPROVED BY: P.JONES, RLS#9600016

DATE: 9/25/02

CORNER FILE CODE:
T6S-R9W-J-13



CORNER HISTORY:

CORNER FILE CODE:
T6S-R9W-J-13

ORIGINAL USPLS SURVEY: Corner established by Jacob Fowler, Dec., 1805 (missing notes).

COUNTY SURVEYOR'S BOOKS: Book 1 P. 30: Isaac Adams WCS Sept. 1, 1854 "Wood Post"

Book 1 P. 96: John C. Frary WCS Mar. 30, 1858 "Wood Post"

Book 3 P. 77: J.H.Wilke WCS Nov. 1905 "Lime Stone from former survey"

Book 4 P. 10: C. Warren Abbott WCS Mar 30, 1946 "Iron Pipe" (SW 25' to E. [sic] end culvert pipe, 26.5' SE to E. end culvert pipe)"

OTHER SURVEYS AND PLATS: "Corner Code System" card shows ref. to RR Spike. "Corner Record" card shows 1984 ref. to 3/4" bolt.

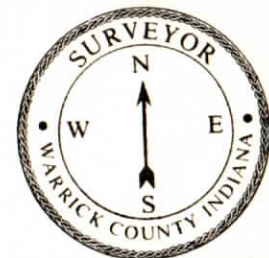
RR Spike was found and tied in to Telephone Road Route Survey (Bernardin-Lochmueller & Assoc.) 2002.

VERIFICATION OF CORNER POSITION: September 2002: The railroad spike shown was found in place, its position consistent with the 1984 Corner Record Card reference ties (within 0.1')

COMMENTS/RECOMMENDATIONS: Planned future improvements to Telephone Road may provide the opportunity to search beneath pavement level for an old stone or other evidence to further verify this position.

Perry E. Jones 9/25/02

CORNER RECORD
WARRICK COUNTY



DESCRIPTION:

NW CORNER NE/4 NE/4

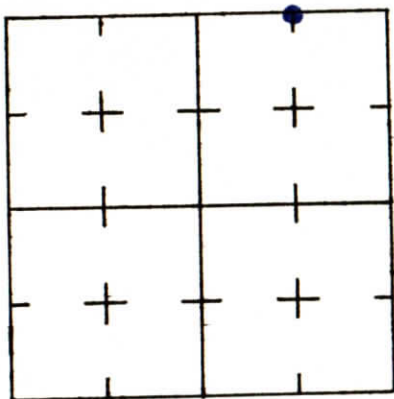
SECTION 10, T. 6 S. R. 9 W.

2nd PRINCIPLE MERIDIAN

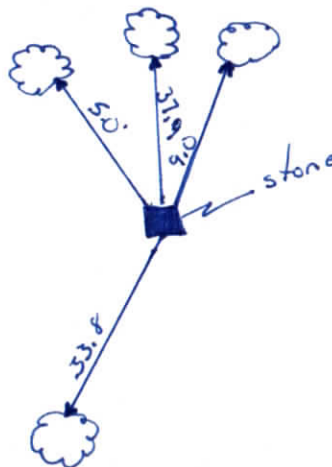
WARRICK COUNTY SURVEYOR
MICHAEL IRVIN

Castlewood Est # 467

INDICATE CORNER REFERENCED



DESCRIBE CORNER REFERENCED



STATE PLANE COORDINATE DATA

INDIANA ZONE: WEST

X _____

Y _____

ESTABLISHED BY:

APPROVED BY

DATE

REFERENCED BY:

Mike Feldbush

DATE

Oct 10, 1990

CORNER RECORD
WARRICK COUNTY



DESCRIPTION :

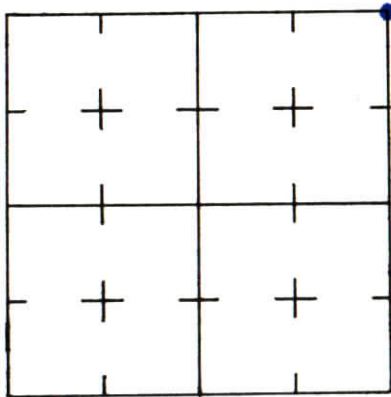
NE CORNER NE 1/4 NE 1/4

SECTION 10, T. 6 S. R. 9 W.

2nd PRINCIPLE MERIDIAN

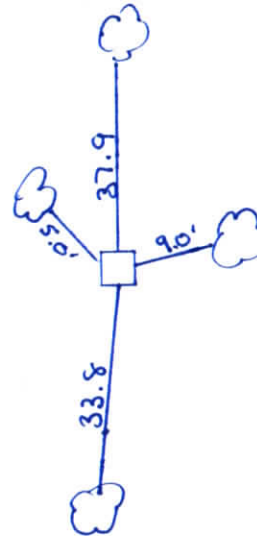
WARRICK COUNTY SURVEYOR
KARAN HARGRAVE-BARNHILL

INDICATE CORNER REFERENCED



DESCRIBE CORNER REFERENCED

CASTLEWOOD ESTATES



STATE PLANE COORDINATE DATA

INDIANA ZONE: WEST

X _____

Y _____

ESTABLISHED BY:

APPROVED BY

DATE

REFERENCED BY:

DATE

MICHAEL F. FELDBUSCH

2-16-87