

CORNER RECORD
WARRICK COUNTY

DESCRIPTION:

SE CORNER

SE^{1/4} ~~SW~~^{1/4}

SECTION 14, T. 6 S.

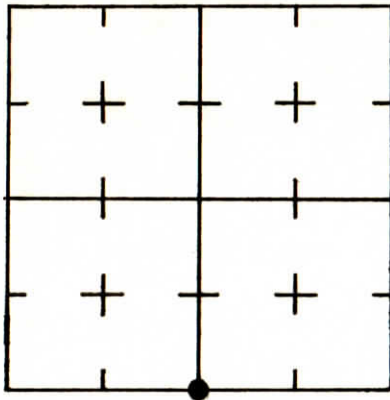
R. 8 W.

2nd PRINCIPAL MERIDIAN

WARRICK COUNTY SURVEYOR
MICHAEL F. FELDBUSCH, L.S.

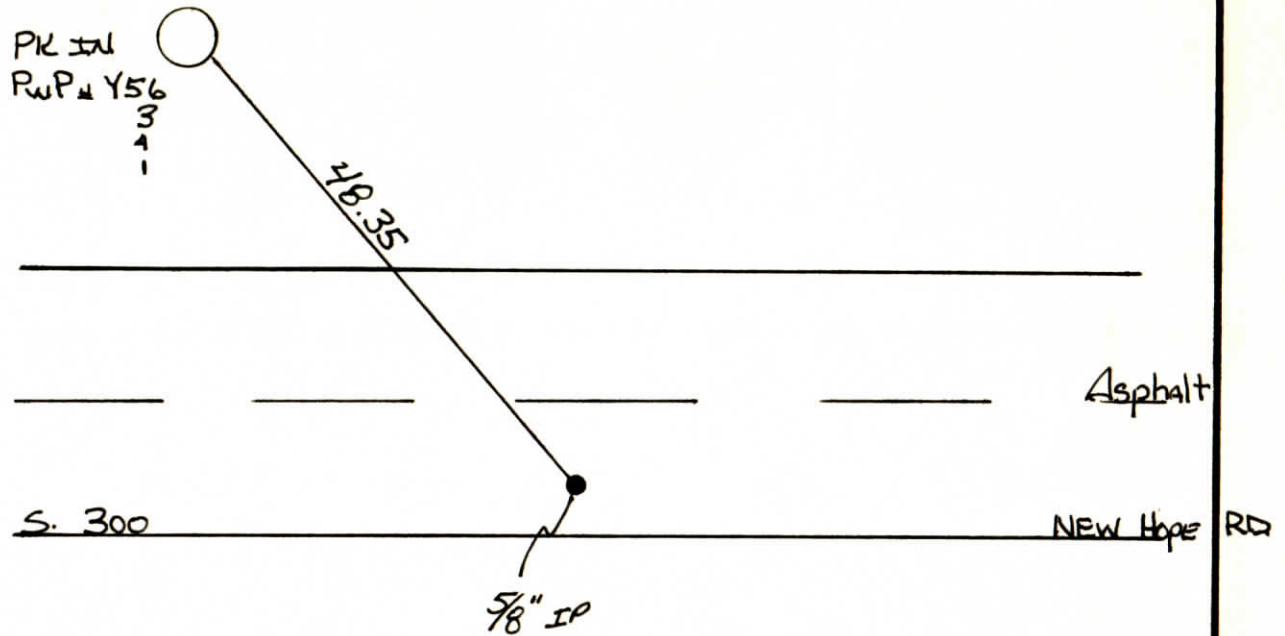


INDICATE CORNER REFERENCED



DESCRIBE CORNER REFERENCED

N.V.



STATE PLANE COORDINATE DATA

INDIANA ZONE: WEST

X _____

Y _____

ESTABLISHED BY:

APPROVED BY

DATE

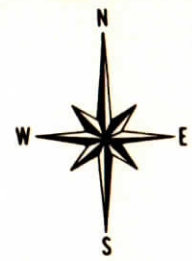
REFERENCED BY:

DATE

Gay Beck

5-13-83

**CORNER RECORD
WARRICK COUNTY**

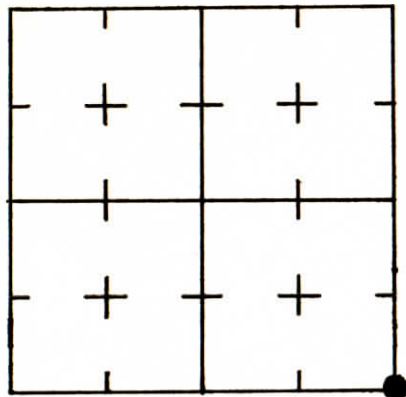


DESCRIPTION :

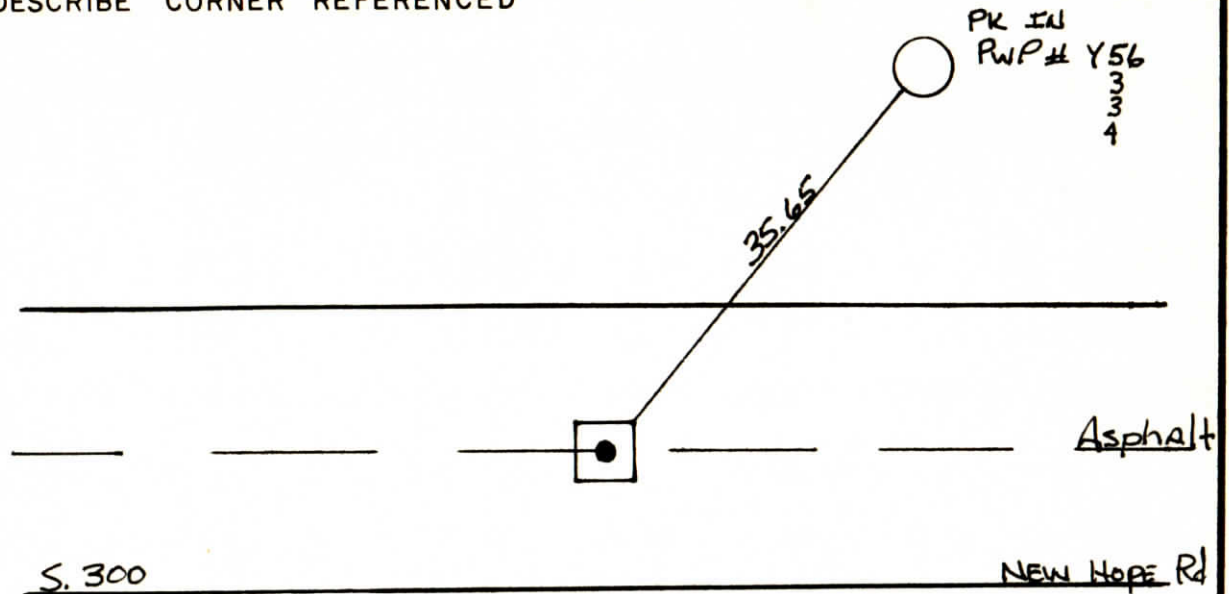
SE CORNER SE 1/4
SECTION 14, T. 6 S. R. 8 W.
2nd PRINCIPAL MERIDIAN

**WARRICK COUNTY SURVEYOR
MICHAEL F. FELDBUSCH, L.S.**

INDICATE CORNER REFERENCED



DESCRIBE CORNER REFERENCED



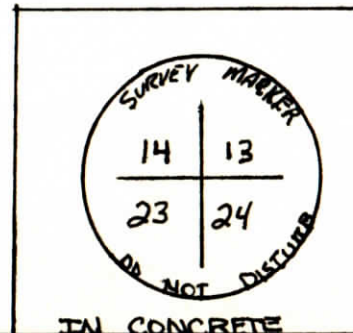
STATE PLANE COORDINATE DATA

INDIANA ZONE: WEST

X _____

Y _____

ESTABLISHED BY:



APPROVED BY

DATE

REFERENCED BY:

DATE

Ray Beck

5-17-83

**CORNER RECORD
WARRICK COUNTY**

DESCRIPTION :

SW CORNER SW 1/4

SECTION 14, T. 6 S.

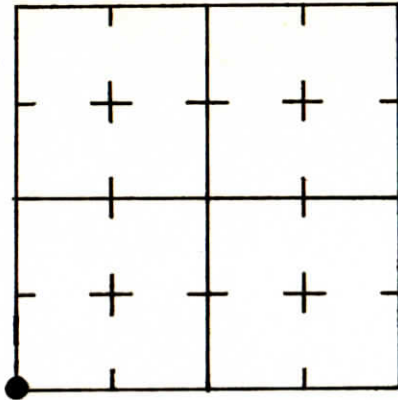
R. 8 W.

2nd PRINCIPAL MERIDIAN

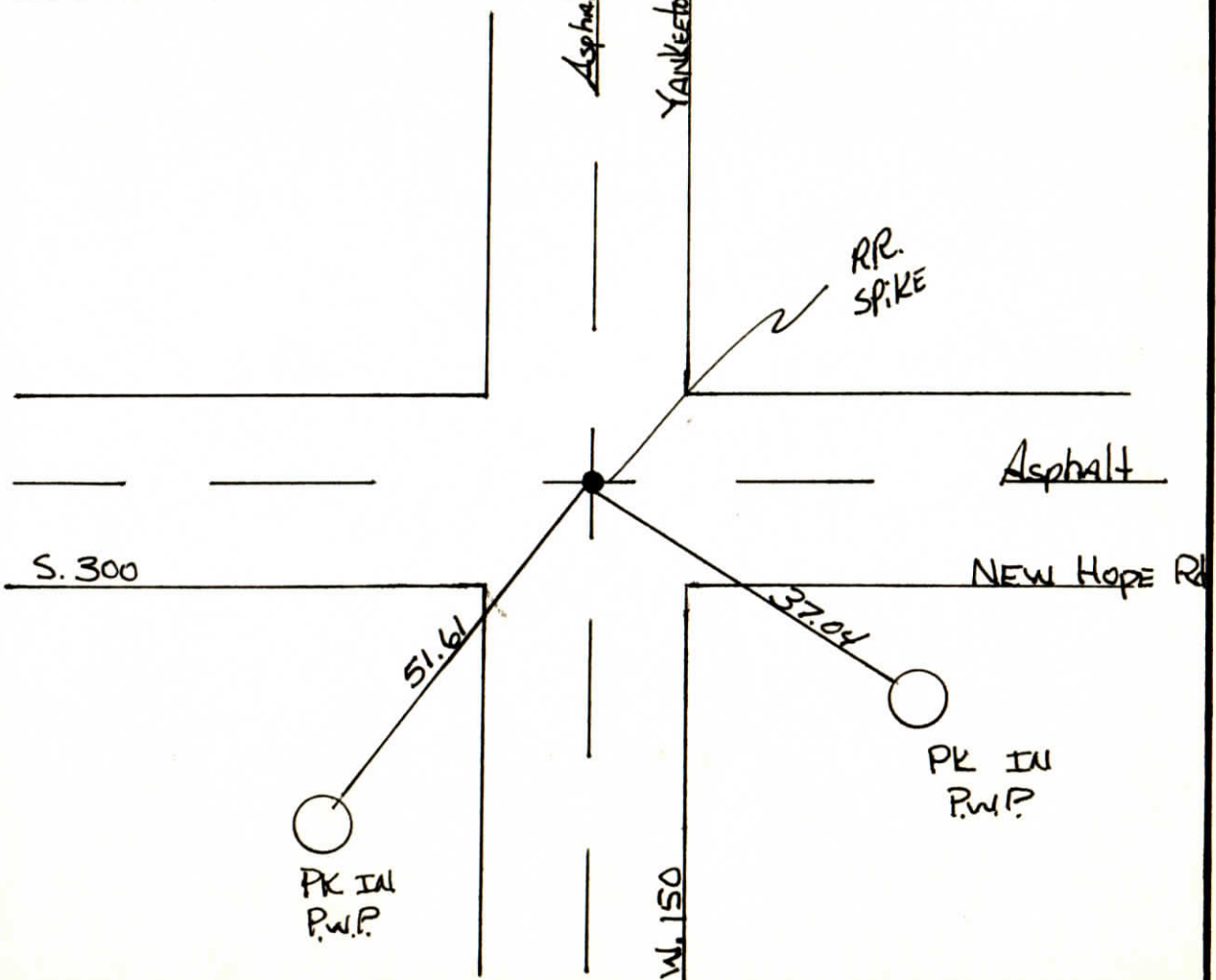
**WARRICK COUNTY SURVEYOR
MICHAEL F. FELDBUSCH, L.S.**



INDICATE CORNER REFERENCED



DESCRIBE CORNER REFERENCED



STATE PLANE COORDINATE DATA

INDIANA ZONE: WEST

X _____

Y _____

ESTABLISHED BY:

APPROVED BY

DATE

REFERENCED BY:

DATE

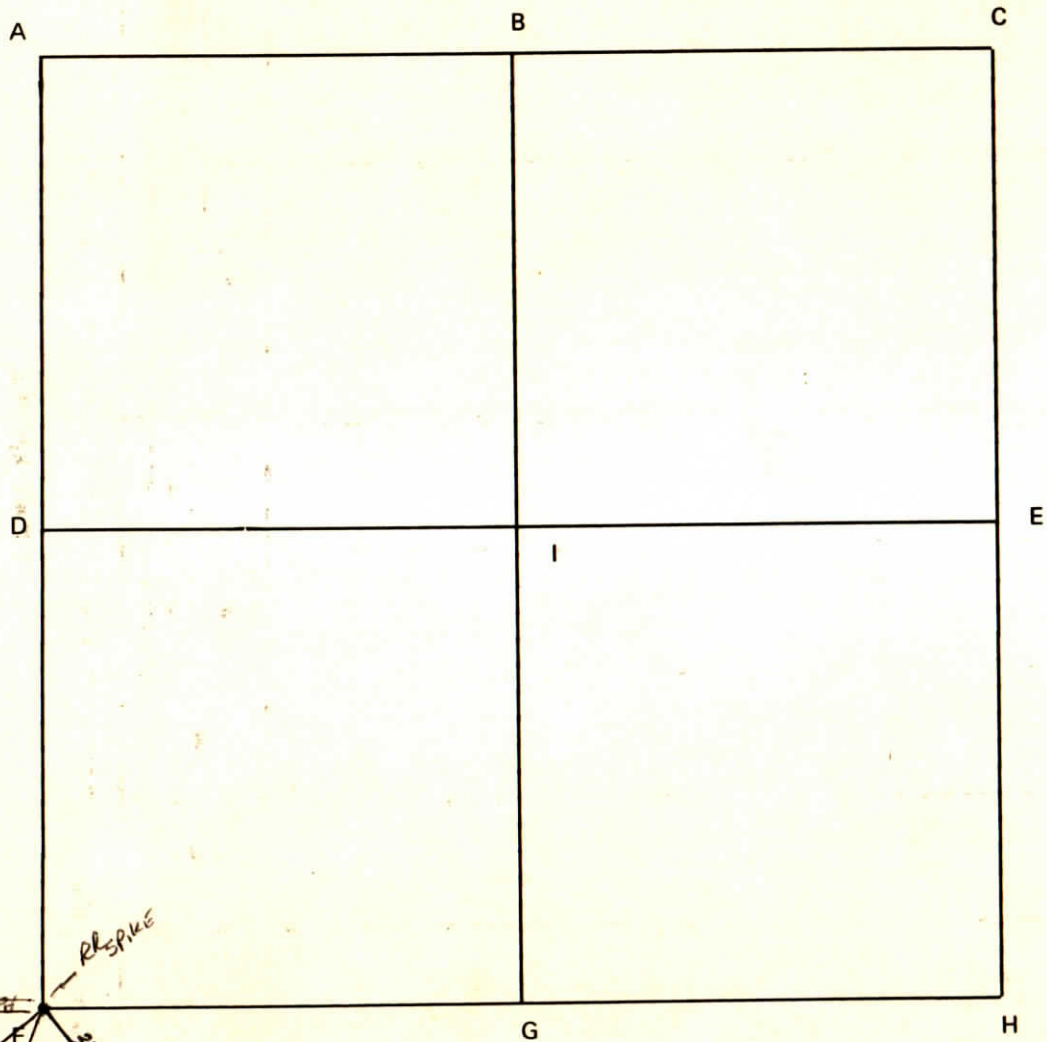
Jay Beck

5-4-83

Section 14 Township 6 South Range 3 West 2nd P.M.

CORNER CODE SYSTEM
Warrick County

NOTES



PK IN P.W.P. 84.41
PK IN T.P. H 94
VAN BUREN RD
31.78
32.15
PK IN P.W.P.
PK IN P.W.P.
R.L. SPIKE

CORNER RECORD
WARRICK COUNTY

DESCRIPTION :

SE CORNER SUN⁴ SW⁴

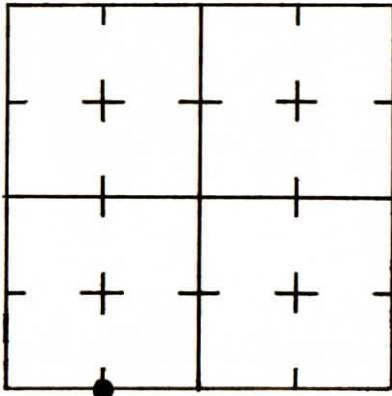
SECTION 14, T. 6 S. R. 8 W.

2nd PRINCIPAL MERIDIAN

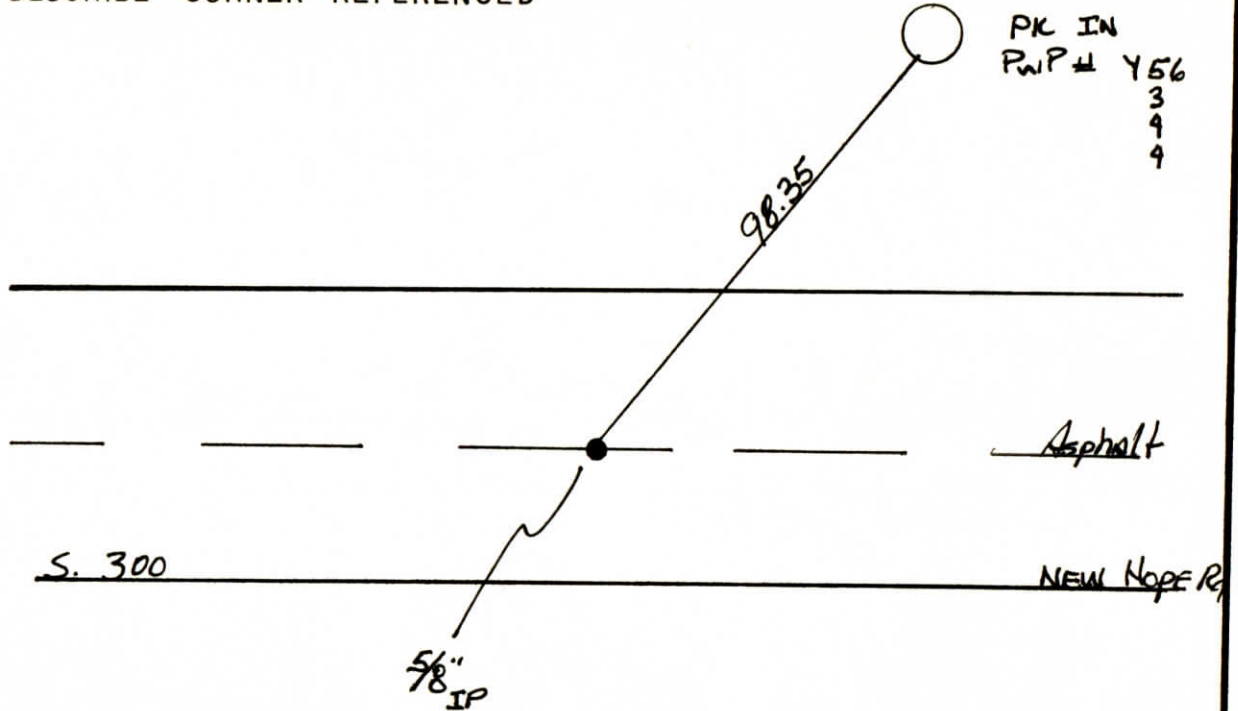
WARRICK COUNTY SURVEYOR
MICHAEL F. FELDBUSCH, L.S.



INDICATE CORNER REFERENCED



DESCRIBE CORNER REFERENCED



STATE PLANE COORDINATE DATA

INDIANA ZONE: WEST

X _____

Y _____

ESTABLISHED BY:

APPROVED BY

DATE

REFERENCED BY:

DATE

Michael F. Feldbusch

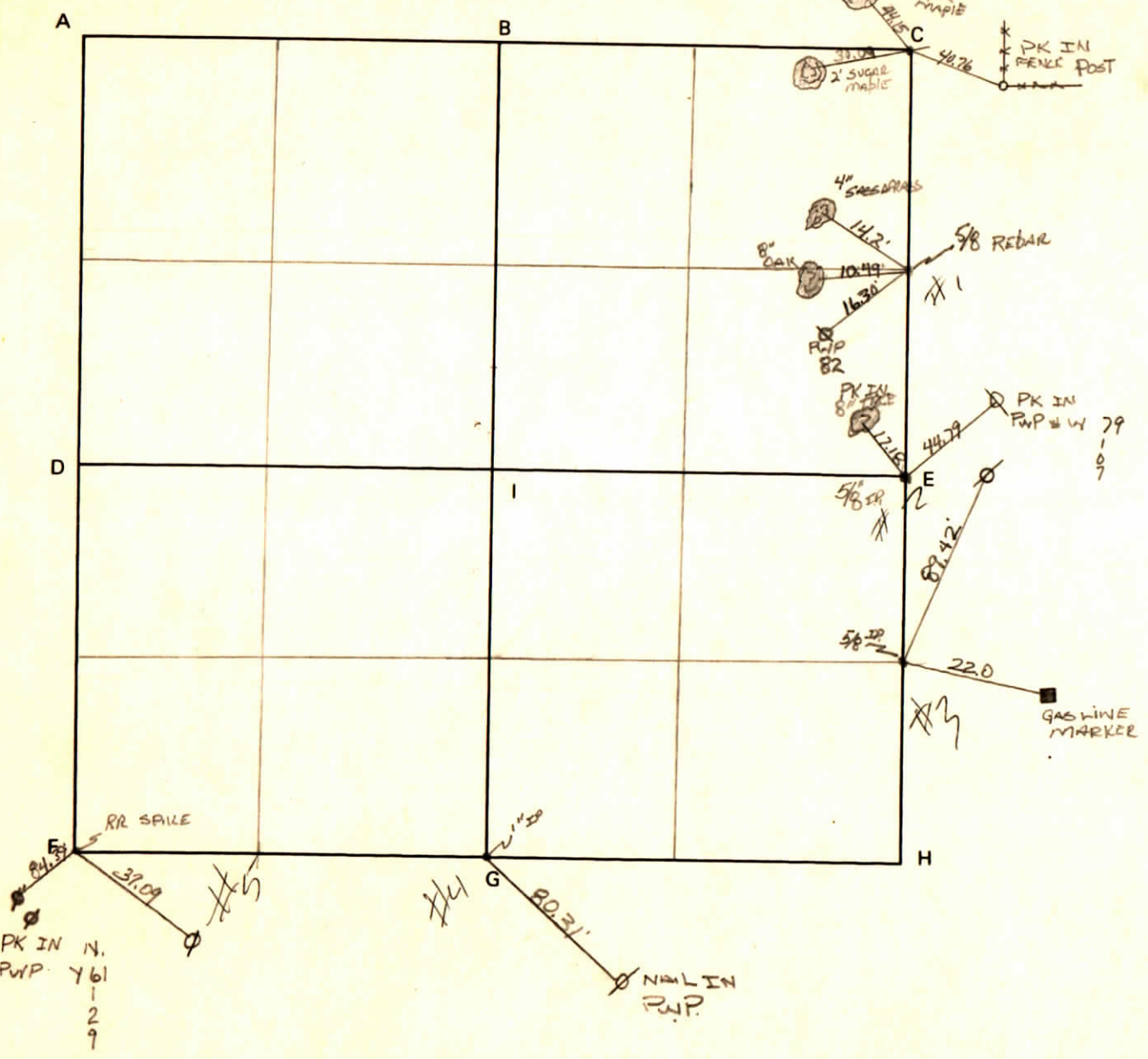
5-13-83



WARRICK COUNTY SURVEYOR
MICHAEL F. FELDBUSCH

CORNER CODE SYSTEM
Warrick County

NOTES



CORNER RECORD
WARRICK COUNTY

DESCRIPTION: CENTER OF SEC.

SE CORNER SE 1/4 NW 1/4

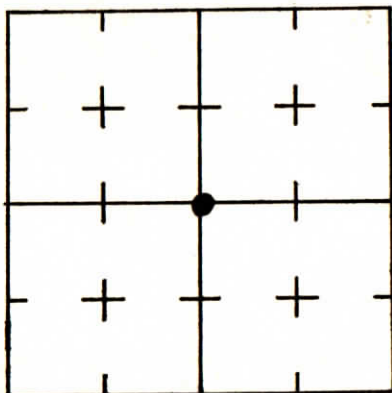
SECTION 16, T. 6 S. R. 8 W.

2nd PRINCIPAL MERIDIAN

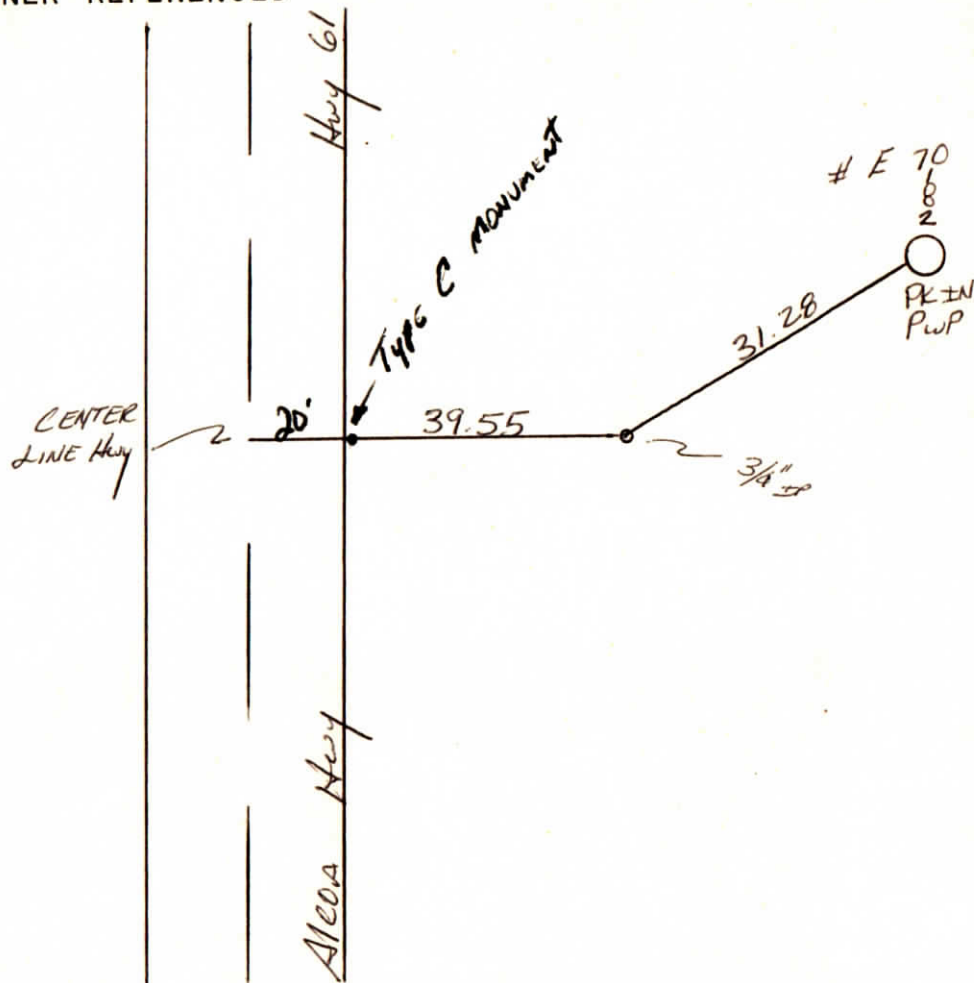
WARRICK COUNTY SURVEYOR
MICHAEL F. FELDBUSCH, L.S.



INDICATE CORNER REFERENCED



DESCRIBE CORNER REFERENCED



STATE PLANE COORDINATE DATA

INDIANA ZONE: WEST

X _____

Y _____

ESTABLISHED BY:

SET

APPROVED BY

INDIANA State Hwy Dept.

DATE

REFERENCED BY:

Ray Beck

DATE

4/18/84

CORNER RECORD
WARRICK COUNTY

DESCRIPTION:

NE CORNER NE 1/4 NW 1/4

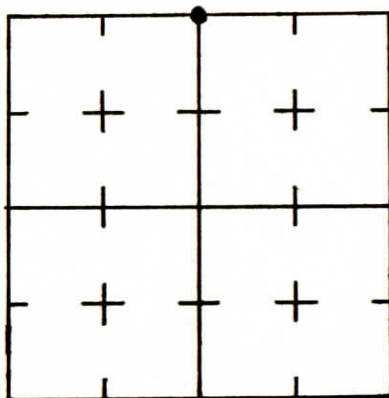
SECTION 16, T. 6 S. R. 8 W.

2nd PRINCIPAL MERIDIAN

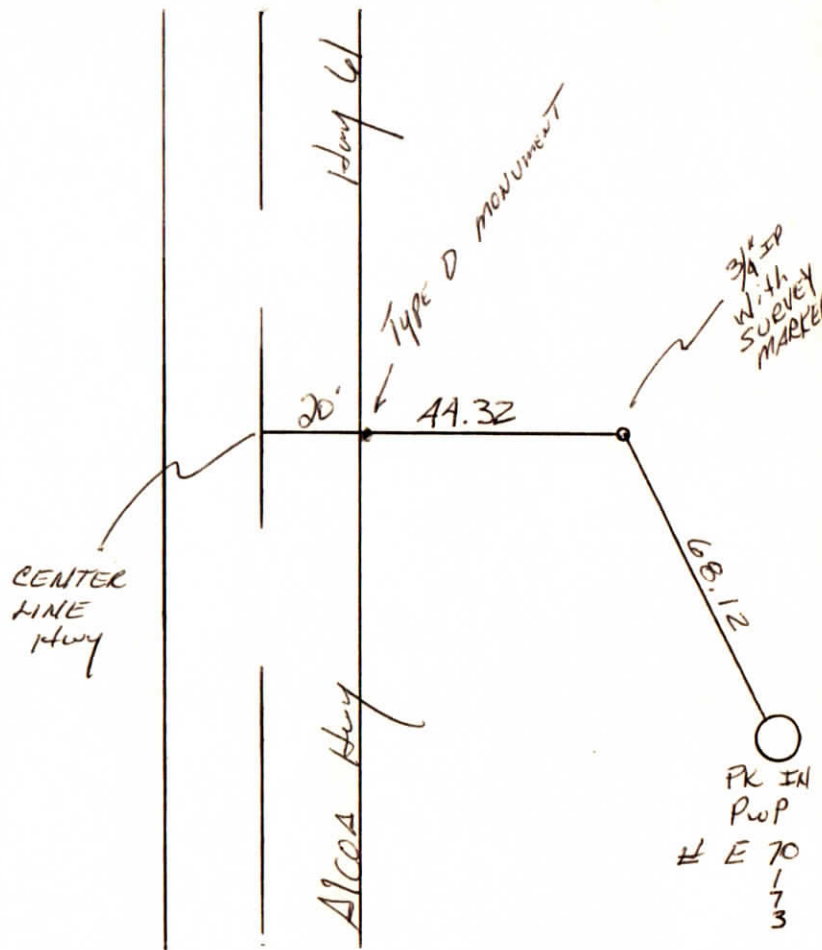
WARRICK COUNTY SURVEYOR
MICHAEL F. FELDBUSCH, L.S.



INDICATE CORNER REFERENCED



DESCRIBE CORNER REFERENCED



STATE PLANE COORDINATE DATA

INDIANA ZONE: WEST

X _____

Y _____

ESTABLISHED BY:

APPROVED BY

INDIANA STATE Hwy Dept

DATE

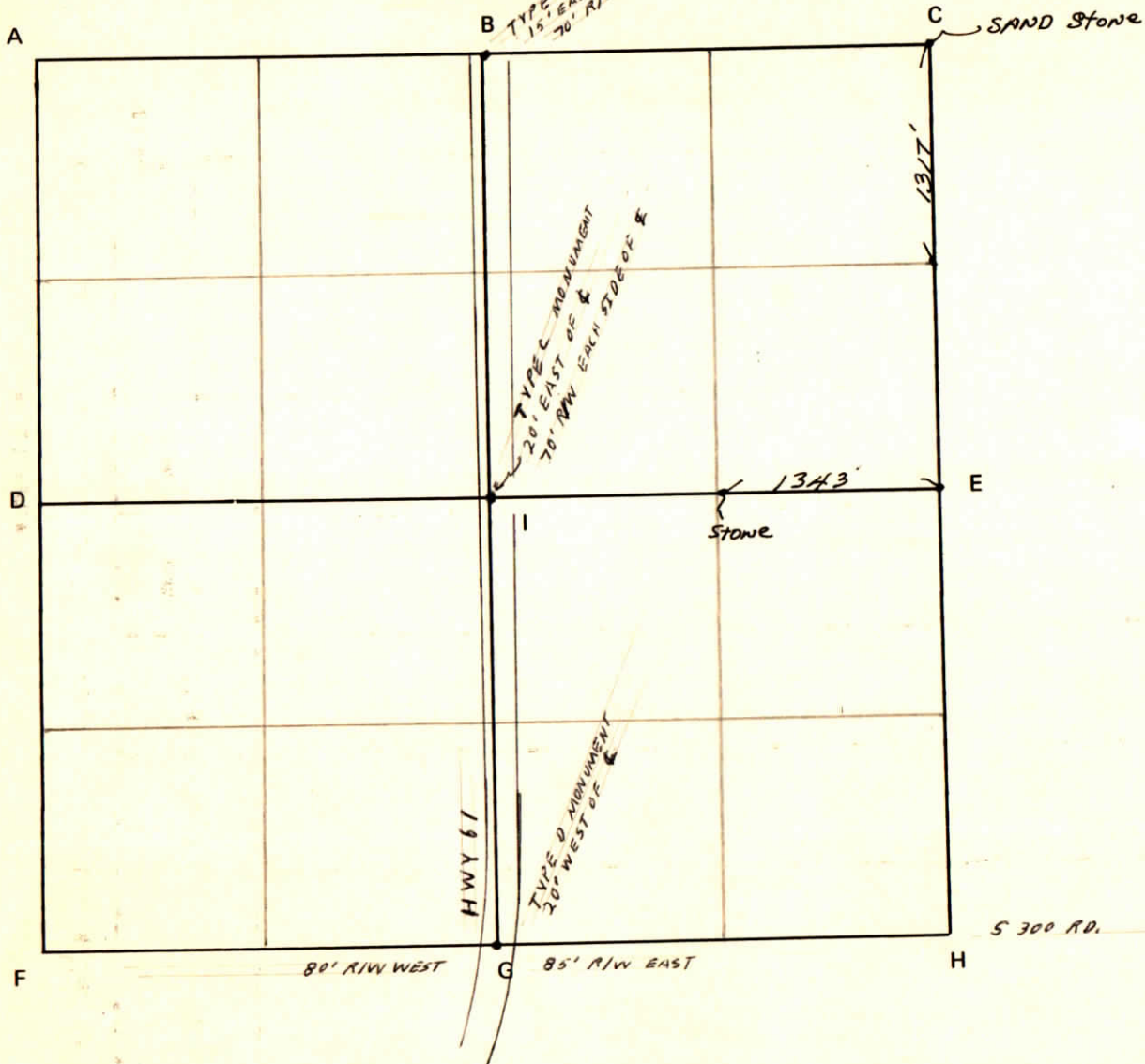
REFERENCED BY:

Ray Beck

DATE

4/18/84

CORNER CODE SYSTEM
Warrick County



NOTES

CORNER RECORD
WARRICK COUNTY



DESCRIPTION:

SW CORNER SE 1/4

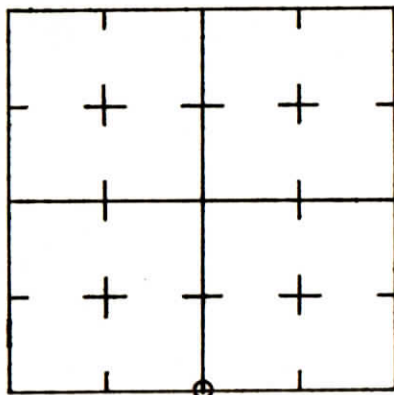
SECTION 17, T. 6 S. R. 8 W.

2nd PRINCIPLE MERIDIAN

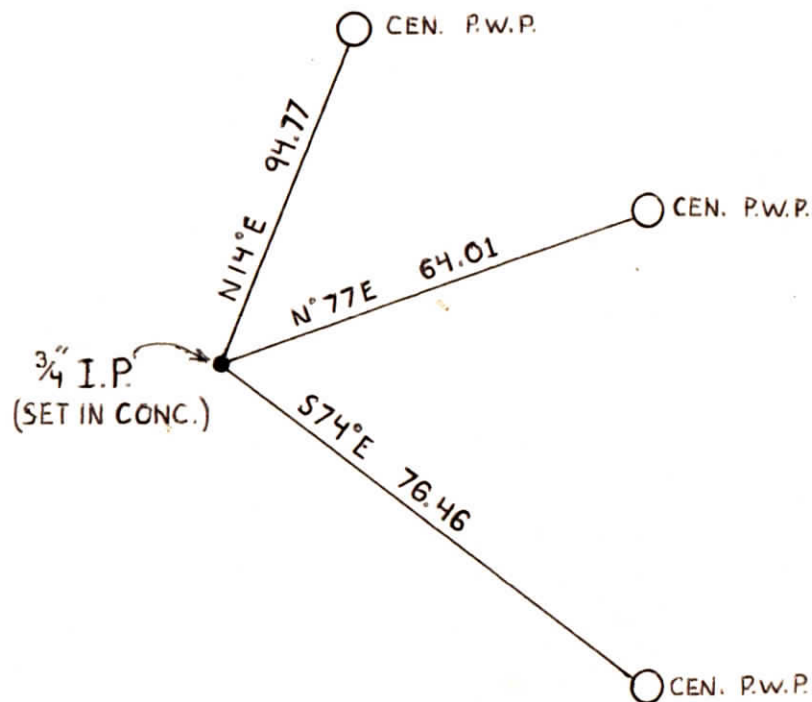
WARRICK COUNTY SURVEYOR

MICHAEL IRVIN

INDICATE CORNER REFERENCED



DESCRIBE CORNER REFERENCED



STATE PLANE COORDINATE DATA

INDIANA ZONE: WEST

X 428,715.25

Y 178,692.49

ESTABLISHED BY:

L. HOFFMAN

APPROVED BY

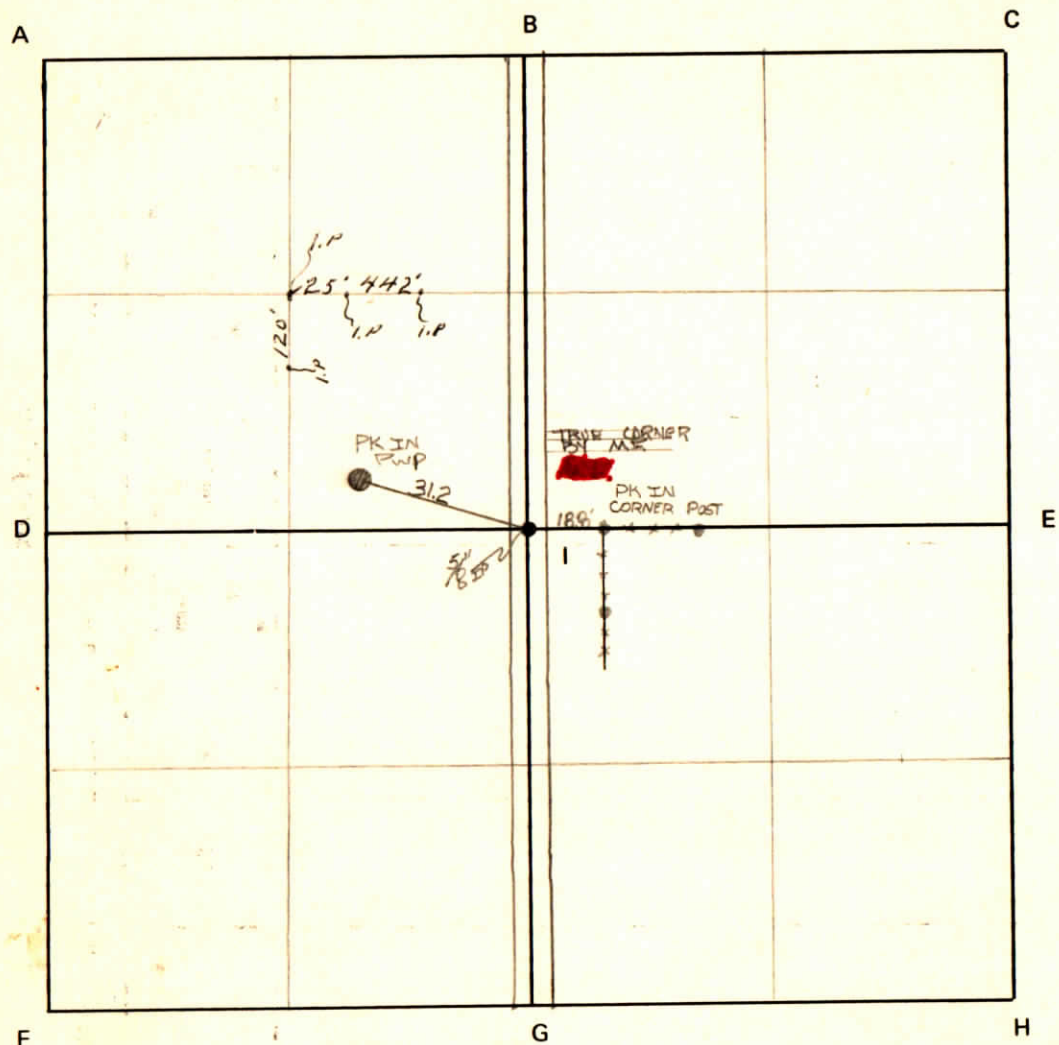
DATE
4-25-1985

REFERENCED BY:

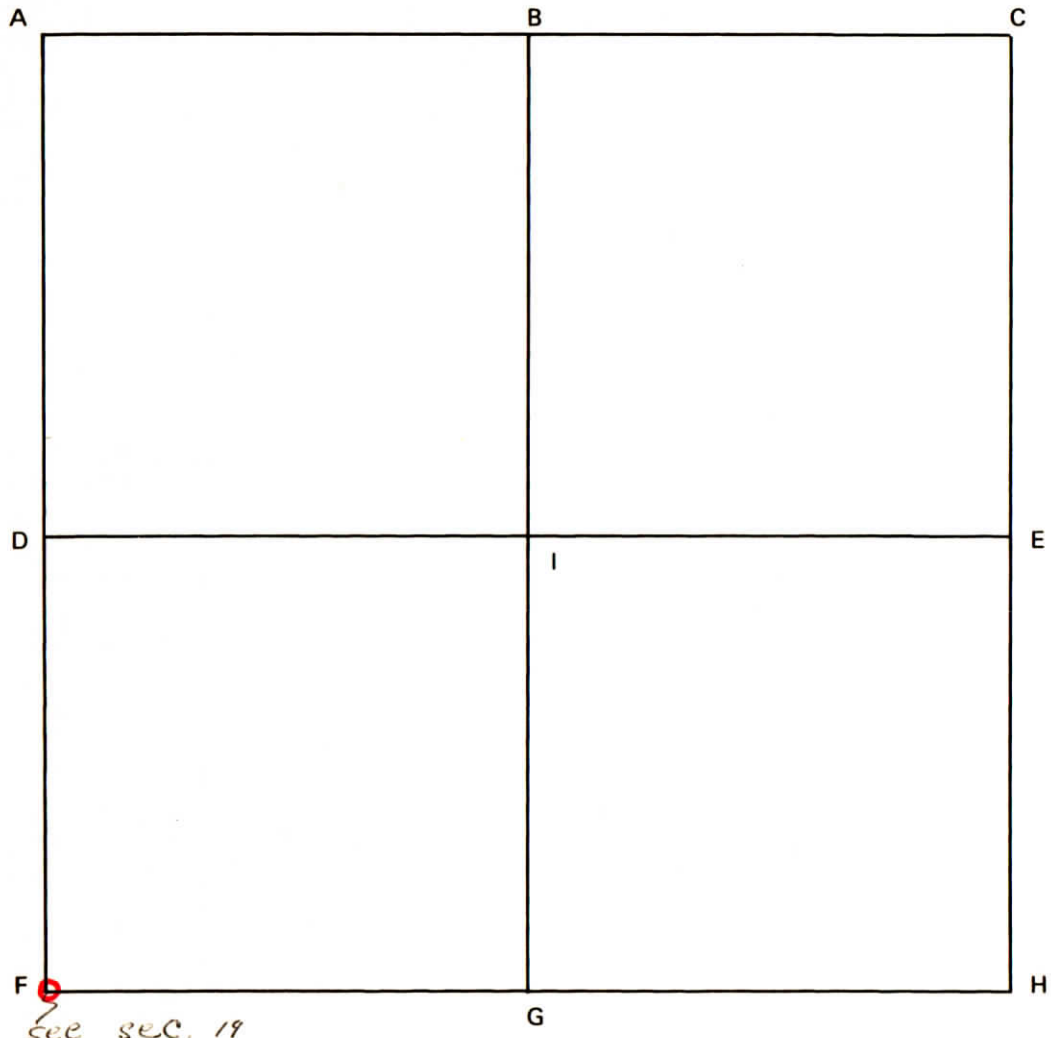
DATE

CORNER CODE SYSTEM
Warrick County

NOTES



CORNER CODE SYSTEM
Warrick County



NOTES

RECORD OF SECTION CORNERS

Warrick County

Section 18 Township 6 South Range 8 West 2nd Principle Meridian

Date	Cor	Location	Description of		Distance from Corner	Bearing from Corner (North Assumed)	Cond	Check By	Remarks
			Monument	Reference					
	A								
	B								
	C								
	D								
	E								
6-18-73 & 9-18-75	F	SW cor.	iron pin in line with east tree line	1) PK nail 2) PK nail 3) PK nail	26.5' 21.6' 33.6'	N 58°E N 87°E N 48°W	fair	GAT	Found in place In 12" Oak In 36" Catalpha In 36" Oak

CORNER RECORD
WARRICK COUNTY



DESCRIPTION:

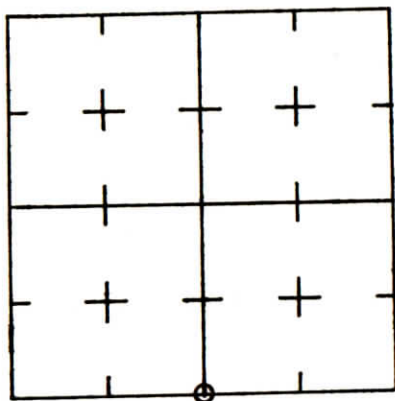
SE CORNER SW¹/₄

SECTION 18, T. 6 S. R. 8 W.

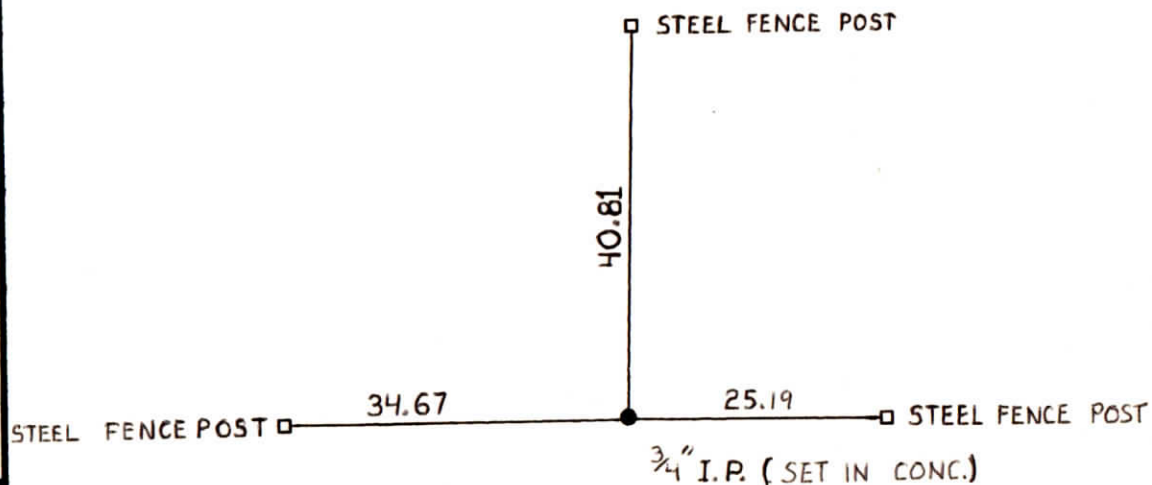
2nd PRINCIPLE MERIDIAN

WARRICK COUNTY SURVEYOR
MICHAEL IRVIN

INDICATE CORNER REFERENCED



DESCRIBE CORNER REFERENCED



STATE PLANE COORDINATE DATA

INDIANA ZONE: WEST

X 423,452.39

Y 178,806.93

ESTABLISHED BY:
L. HOFFMAN

APPROVED BY

DATE
4-25-1984

REFERENCED BY:

DATE

CORNER RECORD
WARRICK COUNTY



DESCRIPTION:

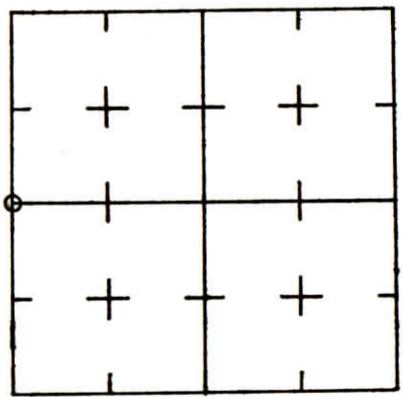
SW CORNER NW¹/₄

SECTION 18, T. 6 S. R. 8 W.

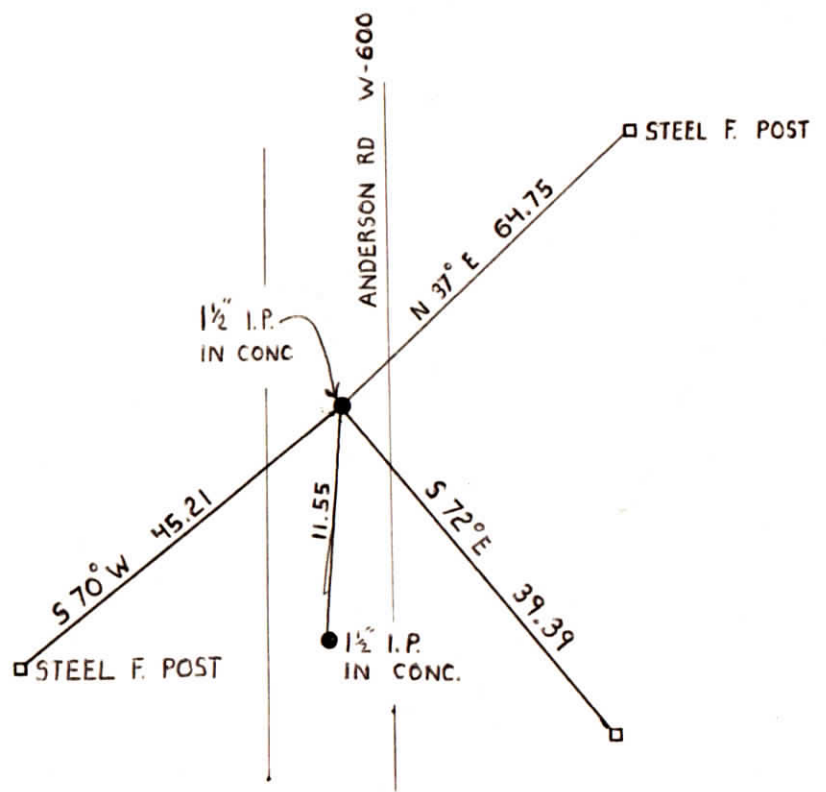
2nd PRINCIPLE MERIDIAN

WARRICK COUNTY SURVEYOR
MICHAEL IRVIN

INDICATE CORNER REFERENCED



DESCRIBE CORNER REFERENCED



STATE PLANE COORDINATE DATA

INDIANA ZONE: WEST

X 420,504.80

Y 181,496.64

ESTABLISHED BY:

L. HOFFMAN

APPROVED BY

DATE
4-25-1985

REFERENCED BY:

DATE

CORNER RECORD
WARRICK COUNTY

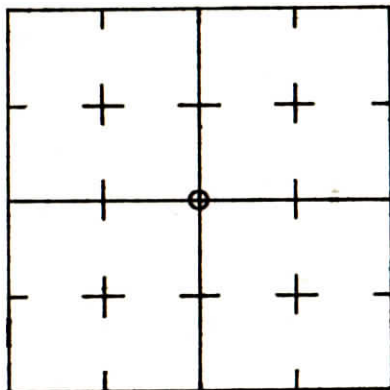


DESCRIPTION: NE 1/4 SW 1/4
NE CORNER CENTER OF SECTION

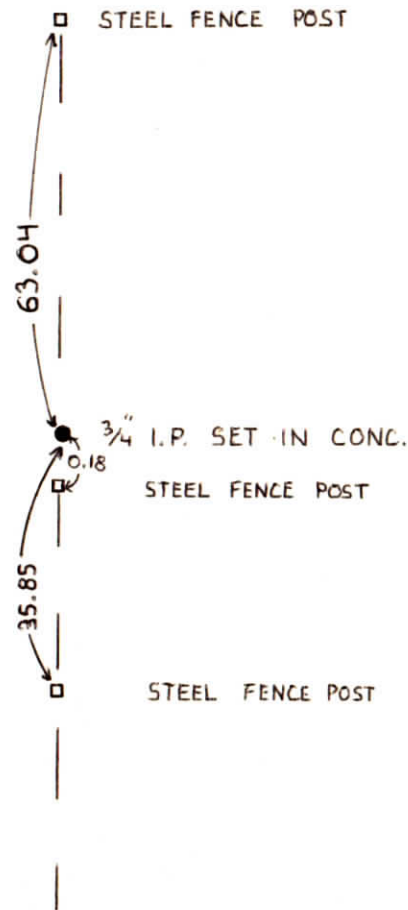
SECTION 18, T. 6 S. R. 8 W.
2nd PRINCIPLE MERIDIAN

WARRICK COUNTY SURVEYOR
MICHAEL IRVIN

INDICATE CORNER REFERENCED



DESCRIBE CORNER REFERENCED



STATE PLANE COORDINATE DATA

INDIANA ZONE: WEST

X 423,519.52

Y 181,440.13

ESTABLISHED BY:

L. HOFFMAN

APPROVED BY

DATE
4-25-1985

REFERENCED BY:

DATE

CORNER RECORD
WARRICK COUNTY



DESCRIPTION:

NW CORNER NW 1/4

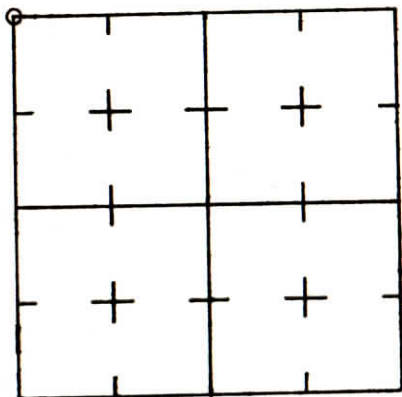
SECTION 18, T. 6 S. R. 8 W.

2nd PRINCIPLE MERIDIAN

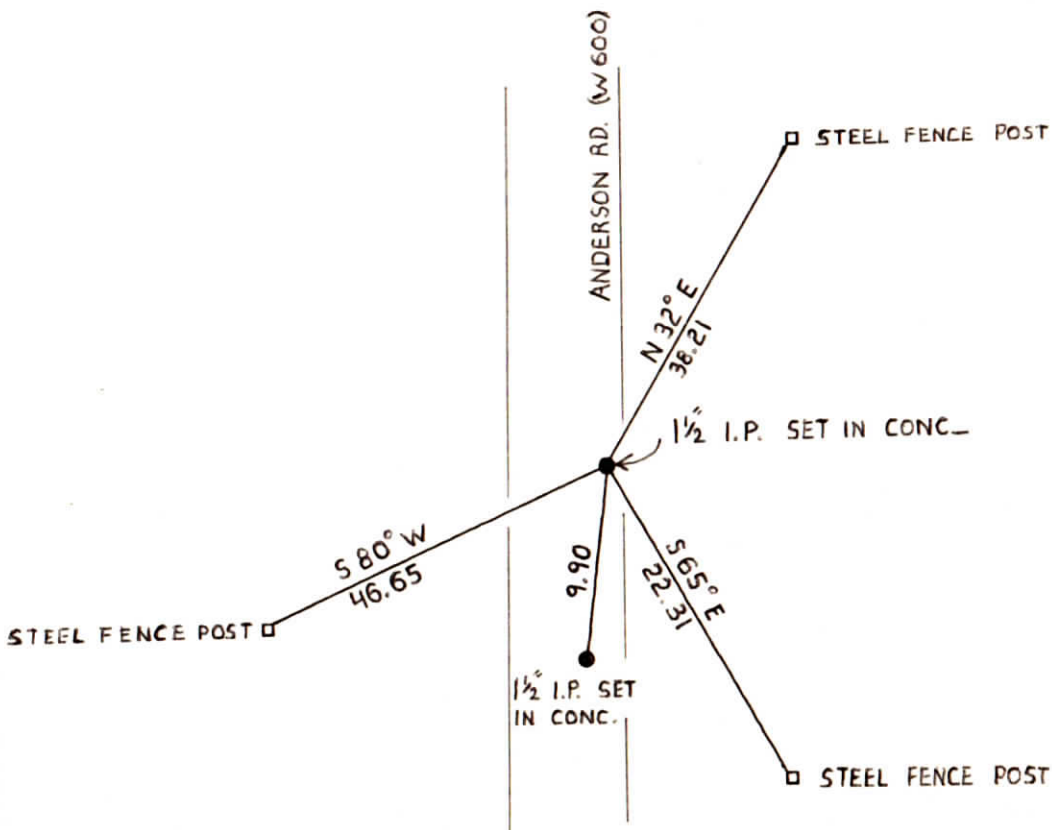
WARRICK COUNTY SURVEYOR

MICHAEL IRVIN

INDICATE CORNER REFERENCED



DESCRIBE CORNER REFERENCED



STATE PLANE COORDINATE DATA

INDIANA ZONE: WEST

X 420,528.75

Y 184,123.86

ESTABLISHED BY:

L. HOFFMAN

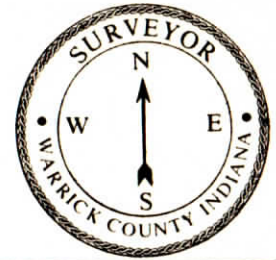
APPROVED BY

DATE
4-25-1985

REFERENCED BY:

DATE

**CORNER RECORD
WARRICK COUNTY**



DESCRIPTION:

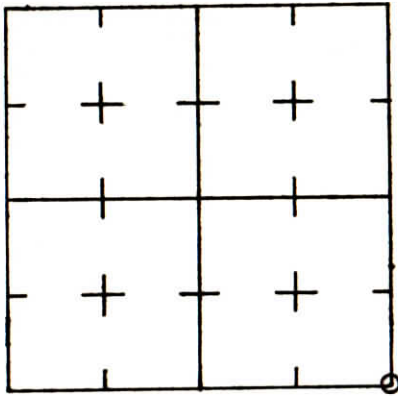
SE CORNER SE 1/4

SECTION 18, T. 6 S. R. 8 W.

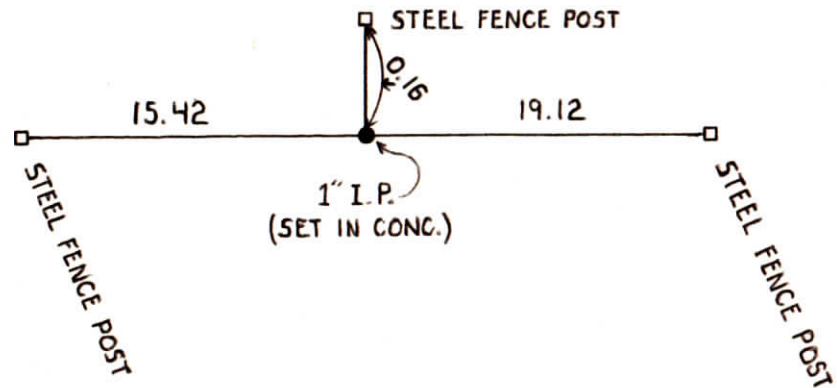
2nd PRINCIPLE MERIDIAN

**WARRICK COUNTY SURVEYOR
MICHAEL IRVIN**

INDICATE CORNER REFERENCED



DESCRIBE CORNER REFERENCED



STATE PLANE COORDINATE DATA

INDIANA ZONE: WEST

X 426,083.86

Y 178,751.58

ESTABLISHED BY:

L. HOFFMAN

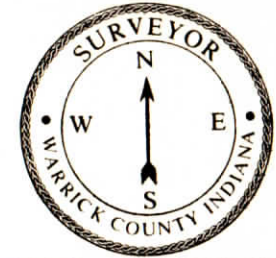
APPROVED BY

DATE
4-25-1985

REFERENCED BY:

DATE

**CORNER RECORD
WARRICK COUNTY**



DESCRIPTION:

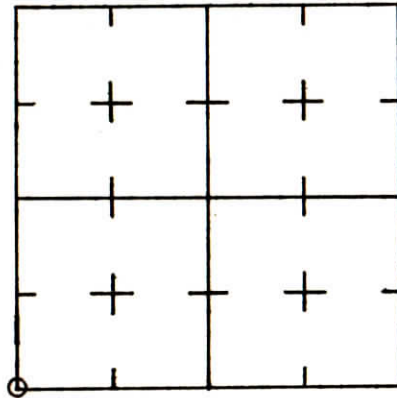
SW CORNER SW¹/₄

SECTION 19, T. 6 S. R. 8 W.

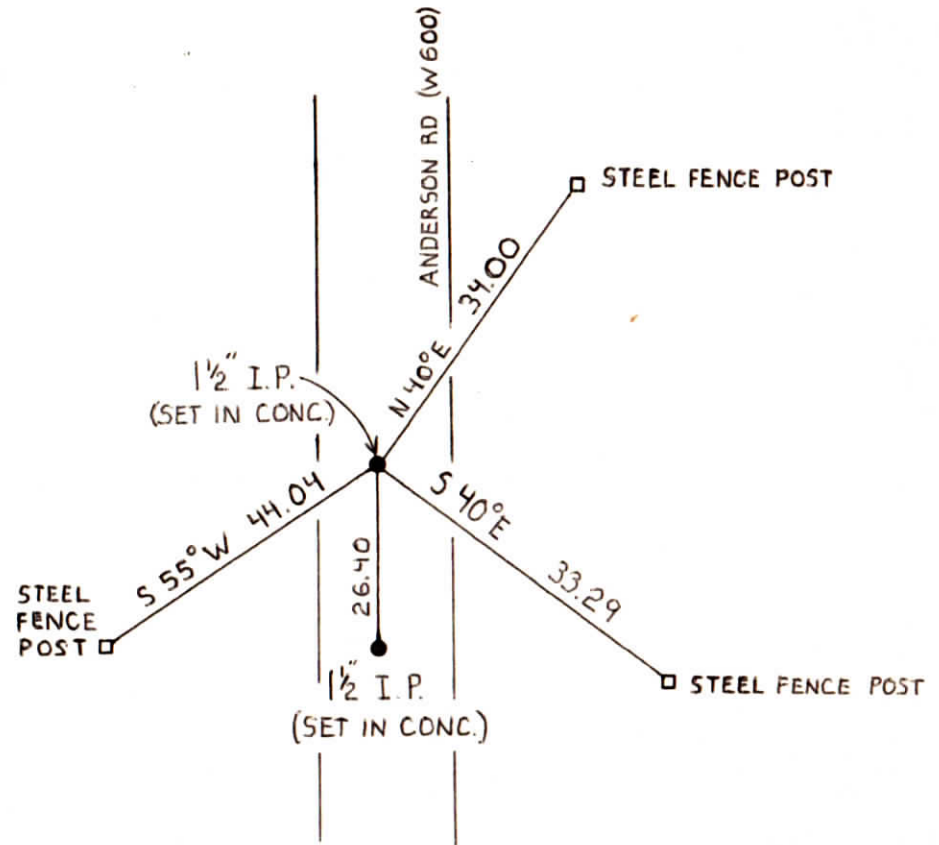
2nd PRINCIPLE MERIDIAN

**WARRICK COUNTY SURVEYOR
MICHAEL IRVIN**

INDICATE CORNER REFERENCED



DESCRIBE CORNER REFERENCED



STATE PLANE COORDINATE DATA

INDIANA ZONE: WEST

X 420,451.60

Y 173,606.79

ESTABLISHED BY:

L. HOFFMAN

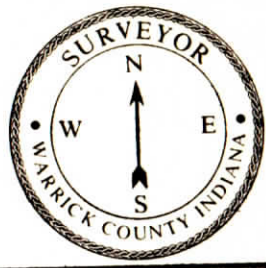
APPROVED BY

DATE
4-25-1985

REFERENCED BY:

DATE

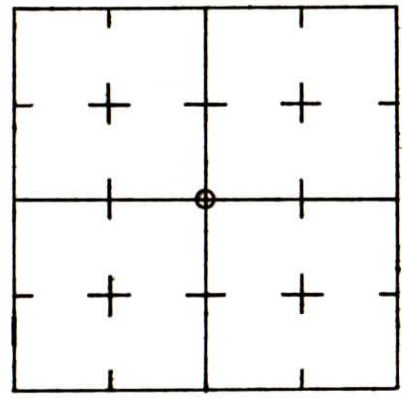
CORNER RECORD
WARRICK COUNTY



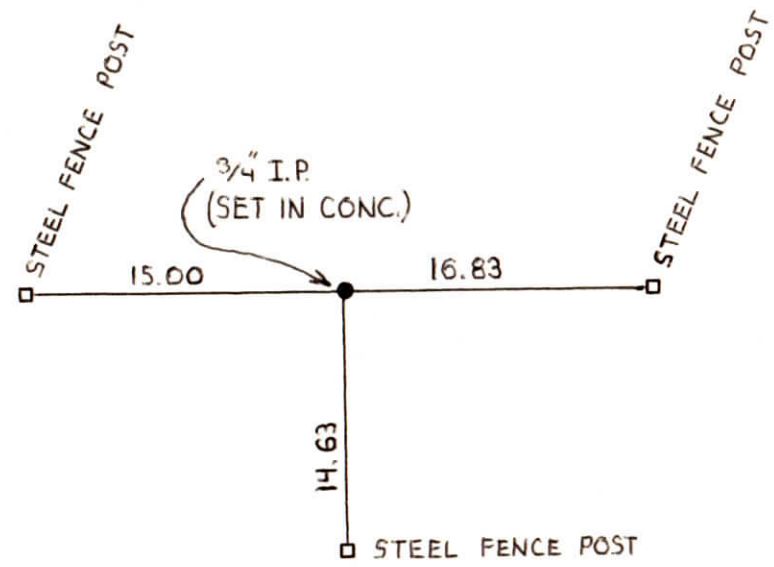
DESCRIPTION: NE¹/₄ SW¹/₄
NE CORNER CENTER OF SECTION
SECTION 19, T. 6 S. R. 8 W.
2nd PRINCIPLE MERIDIAN

WARRICK COUNTY SURVEYOR
MICHAEL IRVIN

INDICATE CORNER REFERENCED



DESCRIBE CORNER REFERENCED



STATE PLANE COORDINATE DATA

INDIANA ZONE: WEST

X 423,420.49

Y 176,171.16

ESTABLISHED BY:

L. HOFFMAN

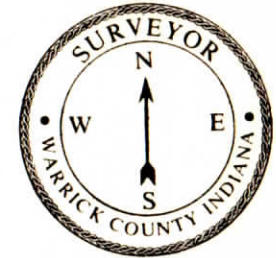
APPROVED BY

DATE
4-25-1985

REFERENCED BY:

DATE

CORNER RECORD
WARRICK COUNTY



DESCRIPTION:

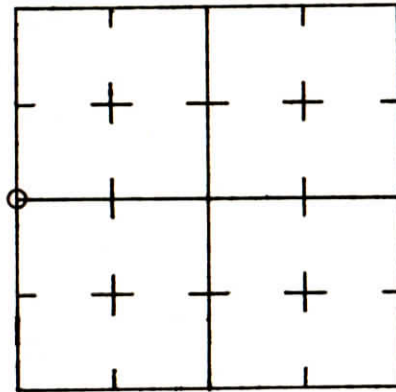
NW CORNER SW¹/₄

SECTION 19, T. 6 S. R. 8 W.

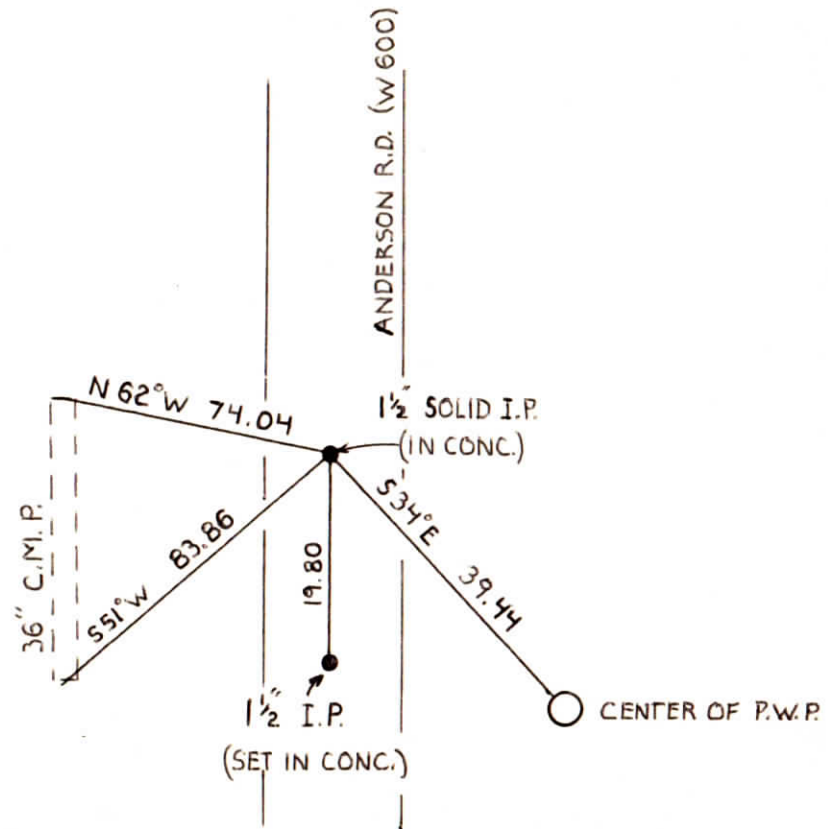
2nd PRINCIPLE MERIDIAN

WARRICK COUNTY SURVEYOR
MICHAEL IRVIN

INDICATE CORNER REFERENCED



DESCRIBE CORNER REFERENCED



STATE PLANE COORDINATE DATA

INDIANA ZONE: WEST

X 420,466.18

Y 176,238.10

ESTABLISHED BY:

L. HOFFMAN

APPROVED BY

DATE

REFERENCED BY:

DATE

**CORNER RECORD
WARRICK COUNTY**



DESCRIPTION:

NW CORNER NW¹/₄

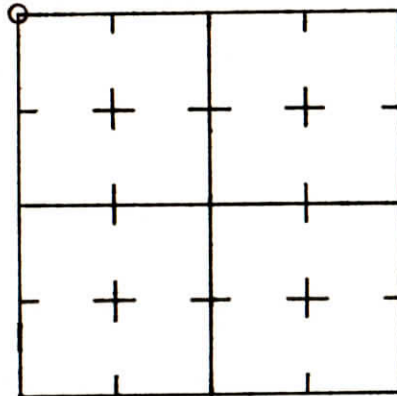
SECTION 19, T. 6 S. R. 8 W.

2nd PRINCIPLE MERIDIAN

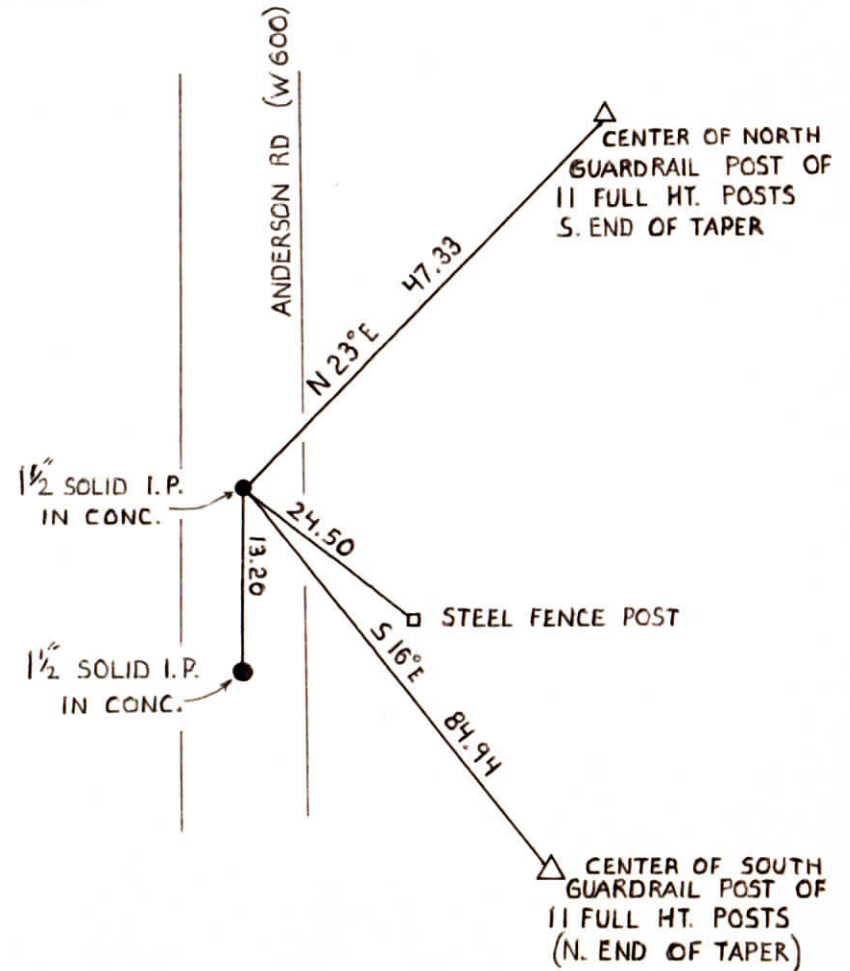
WARRICK COUNTY SURVEYOR

MICHAEL IRVIN

INDICATE CORNER REFERENCED



DESCRIBE CORNER REFERENCED



STATE PLANE COORDINATE DATA

INDIANA ZONE: WEST

X 420,480.82

Y 178,869.42

ESTABLISHED BY:

L. HOFFMAN

APPROVED BY

DATE
4-25-1985

REFERENCED BY:

DATE

CORNER RECORD
WARRICK COUNTY

DESCRIPTION:

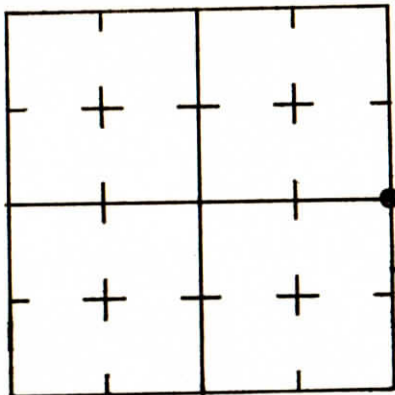
SE CORNER SE 1/4 NE 1/4

SECTION 20, T. 6 S. R. 8 W.
2nd PRINCIPAL MERIDIAN

WARRICK COUNTY SURVEYOR
MICHAEL F. FELDBUSCH, L.S.

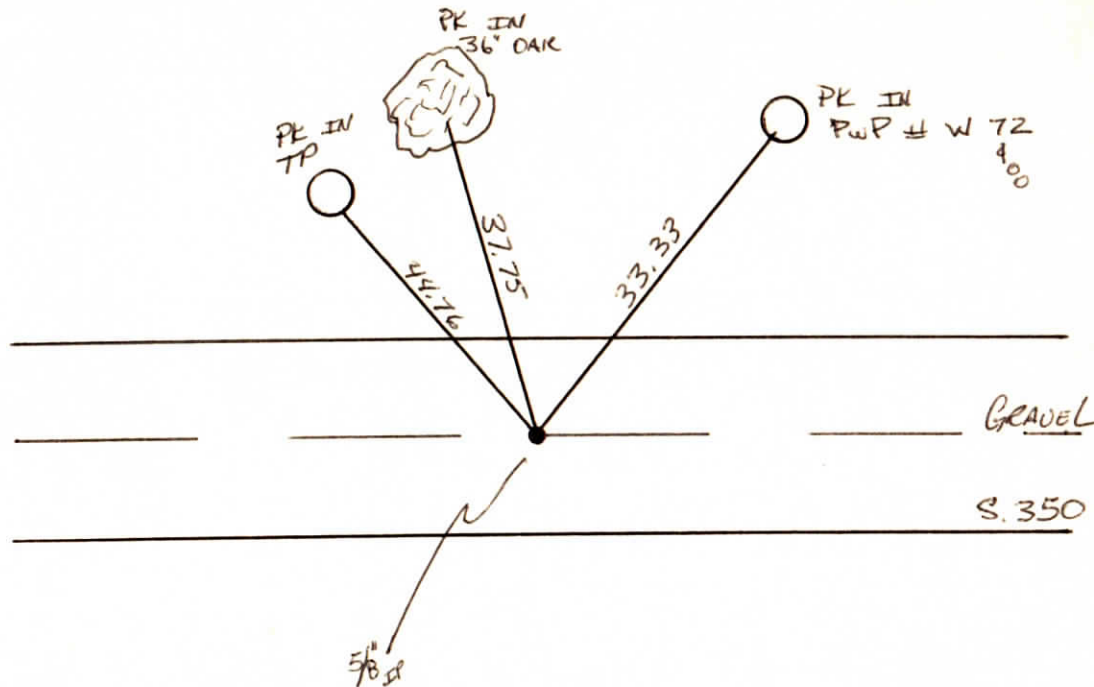


INDICATE CORNER REFERENCED



DESCRIBE CORNER REFERENCED

NOT VERIFIED



STATE PLANE COORDINATE DATA

INDIANA ZONE: WEST

X _____

Y _____

ESTABLISHED BY:

APPROVED BY

DATE

REFERENCED BY:

DATE

Gay Beck

3/23/84

CORNER RECORD
WARRICK COUNTY

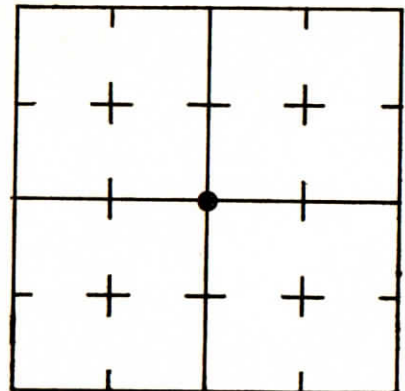
DESCRIPTION: ~~CENTER OF SECTION~~
SW CORNER SW¹/₄ NE¹/₄

SECTION 20, T. 6 S. R. 8 W.
2nd PRINCIPAL MERIDIAN

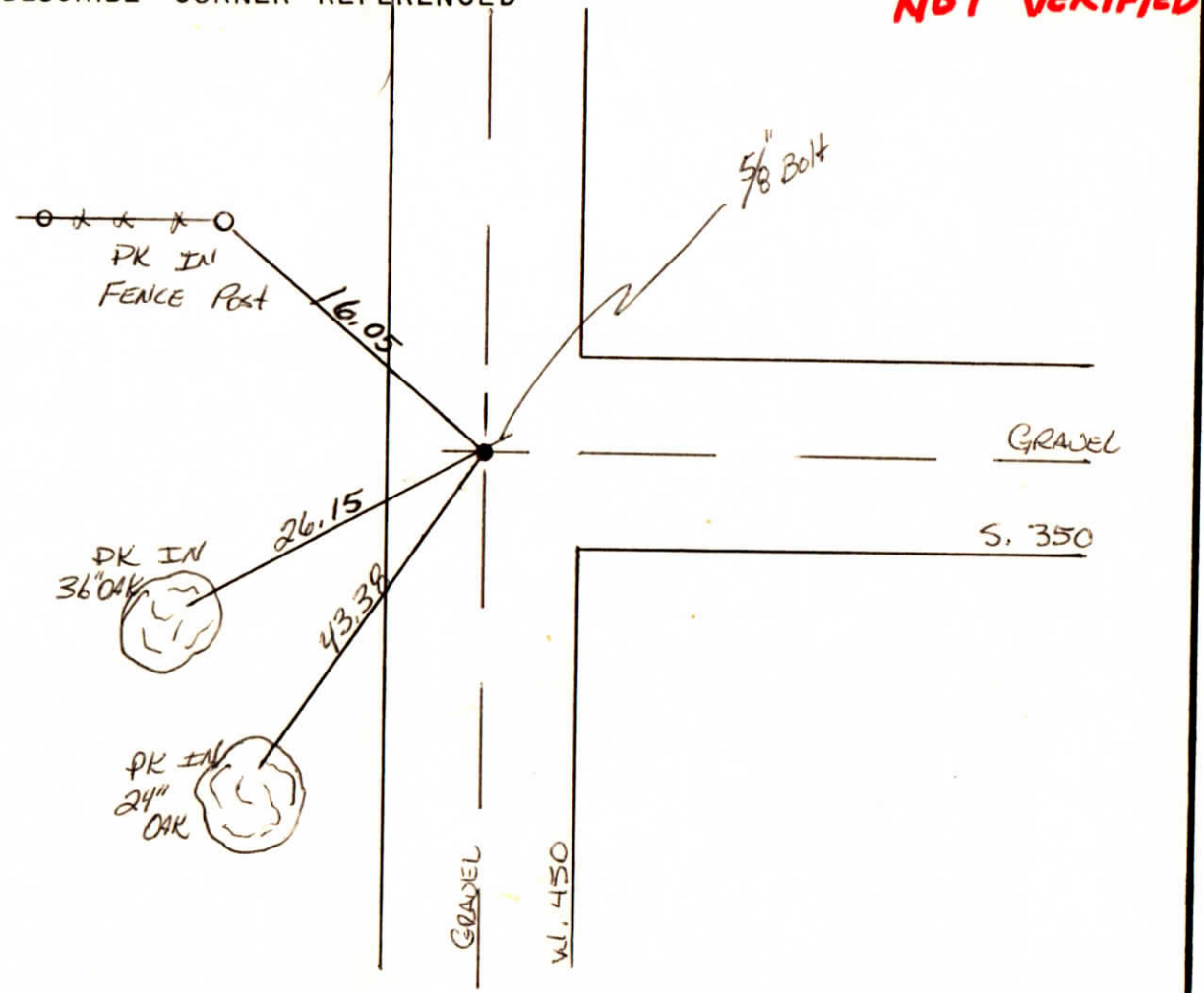
WARRICK COUNTY SURVEYOR
MICHAEL F. FELDBUSCH, L.S.



INDICATE CORNER REFERENCED



DESCRIBE CORNER REFERENCED



STATE PLANE COORDINATE DATA

INDIANA ZONE: WEST

X _____

Y _____

ESTABLISHED BY:

APPROVED BY

DATE

REFERENCED BY:

DATE

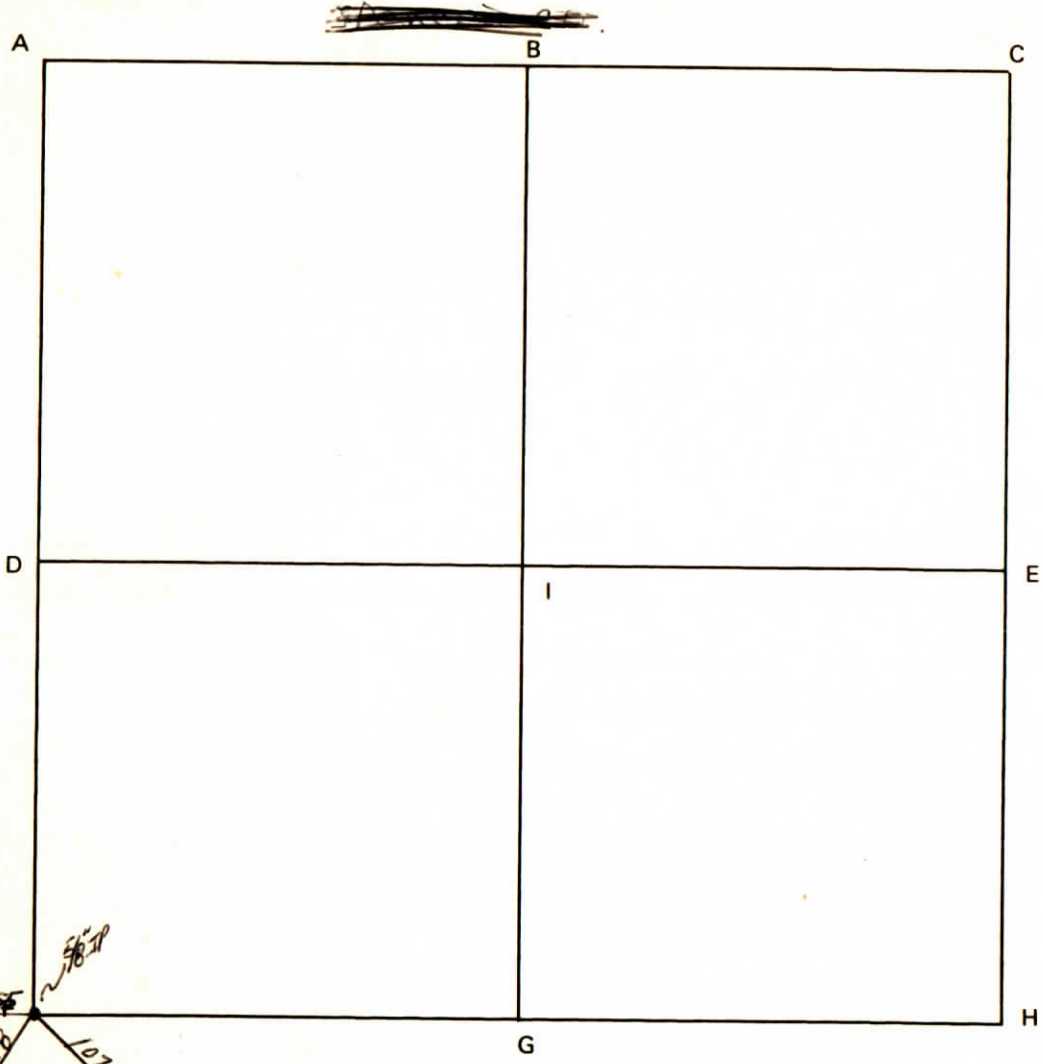
May Beck

3/23/84



WARRICK COUNTY SURVEYOR
MICHAEL F. FELDBUSCH

CORNER CODE SYSTEM
Warrick County

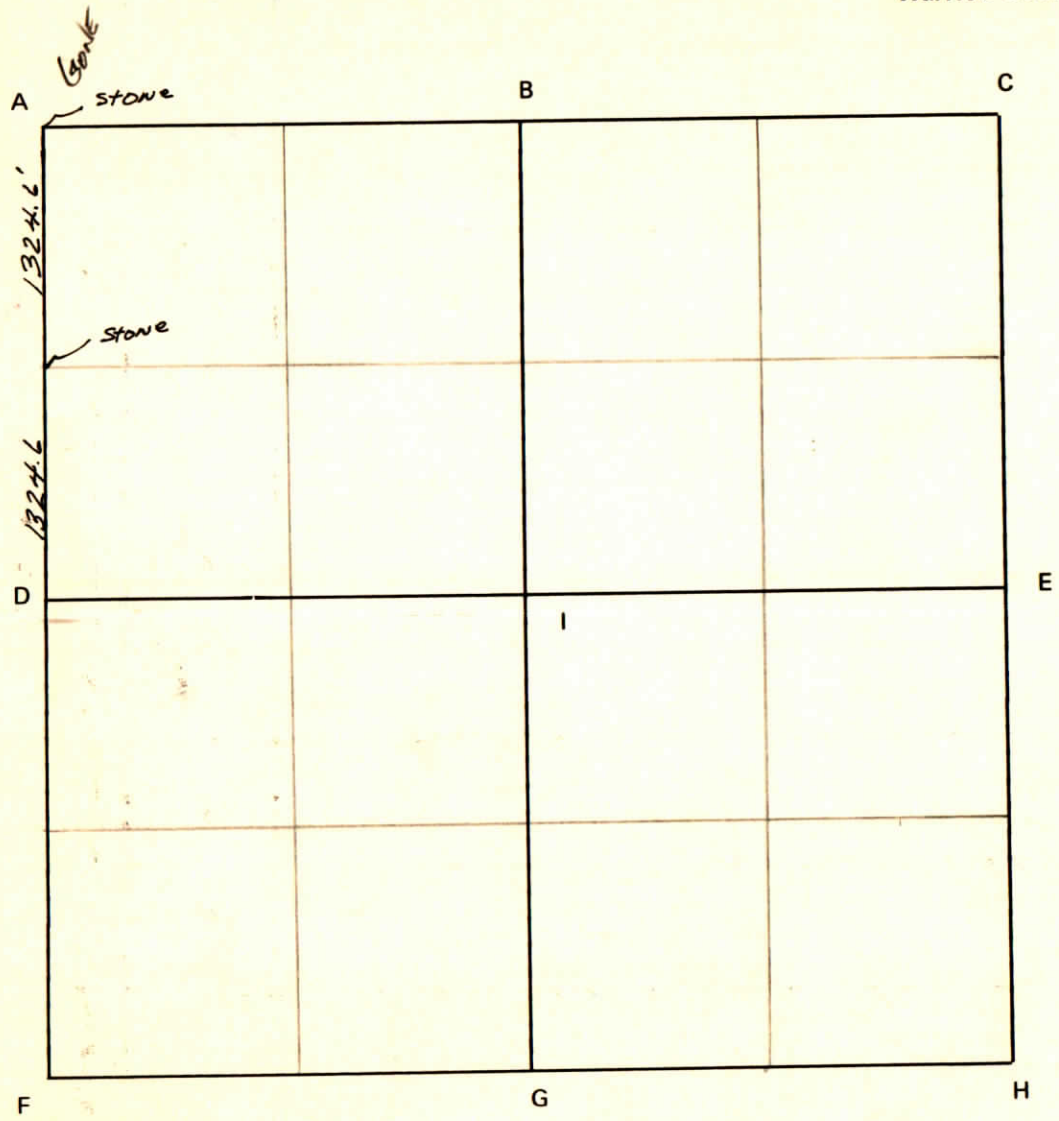


NOTES

24" TREE
83
7378
10142
NAIL IN PWP
NAIL IN PWP

Section 22 ~~21~~ Township 6 South Range 8 West 2nd P.M.

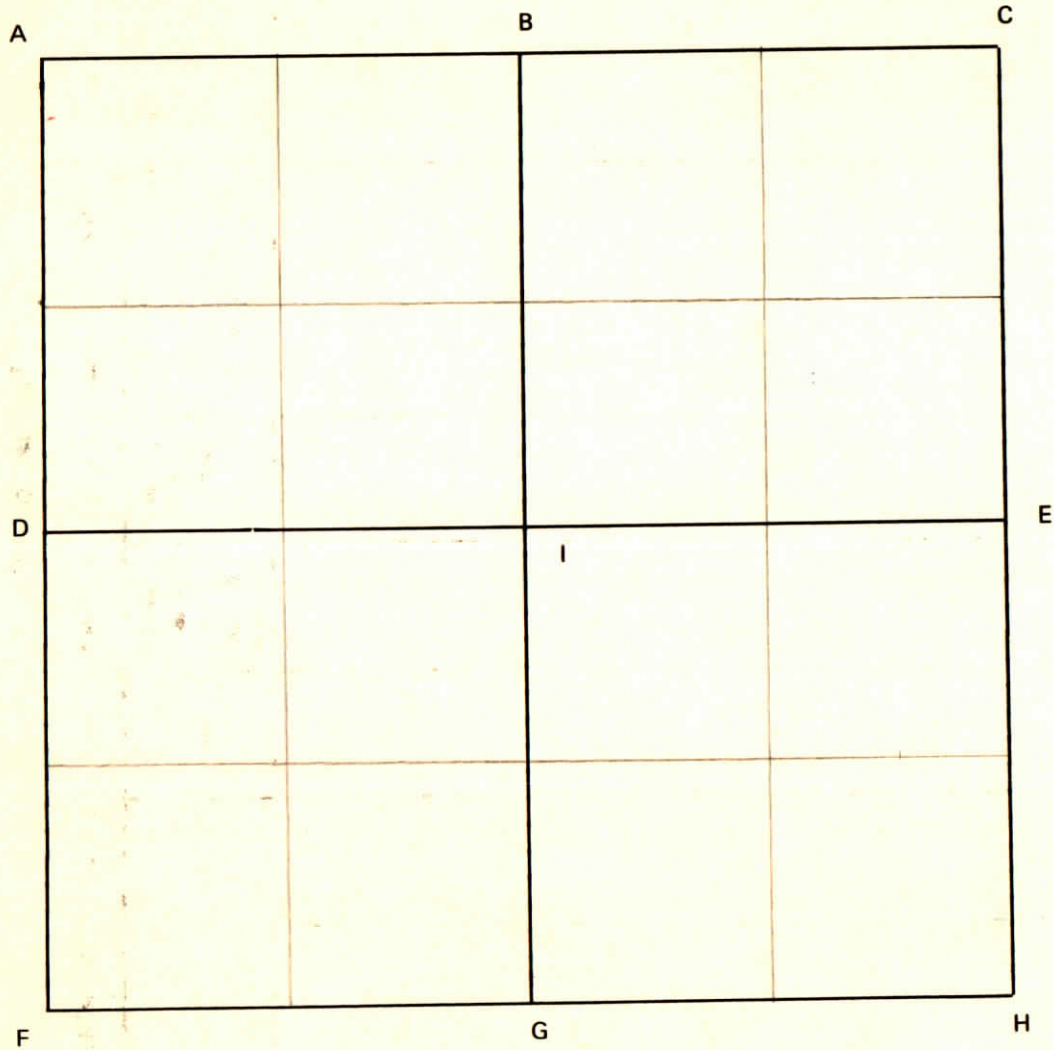
CORNER CODE SYSTEM
Warrick County



NOTES

Section 22 Township 6 South Range 8 West 2nd P.M.

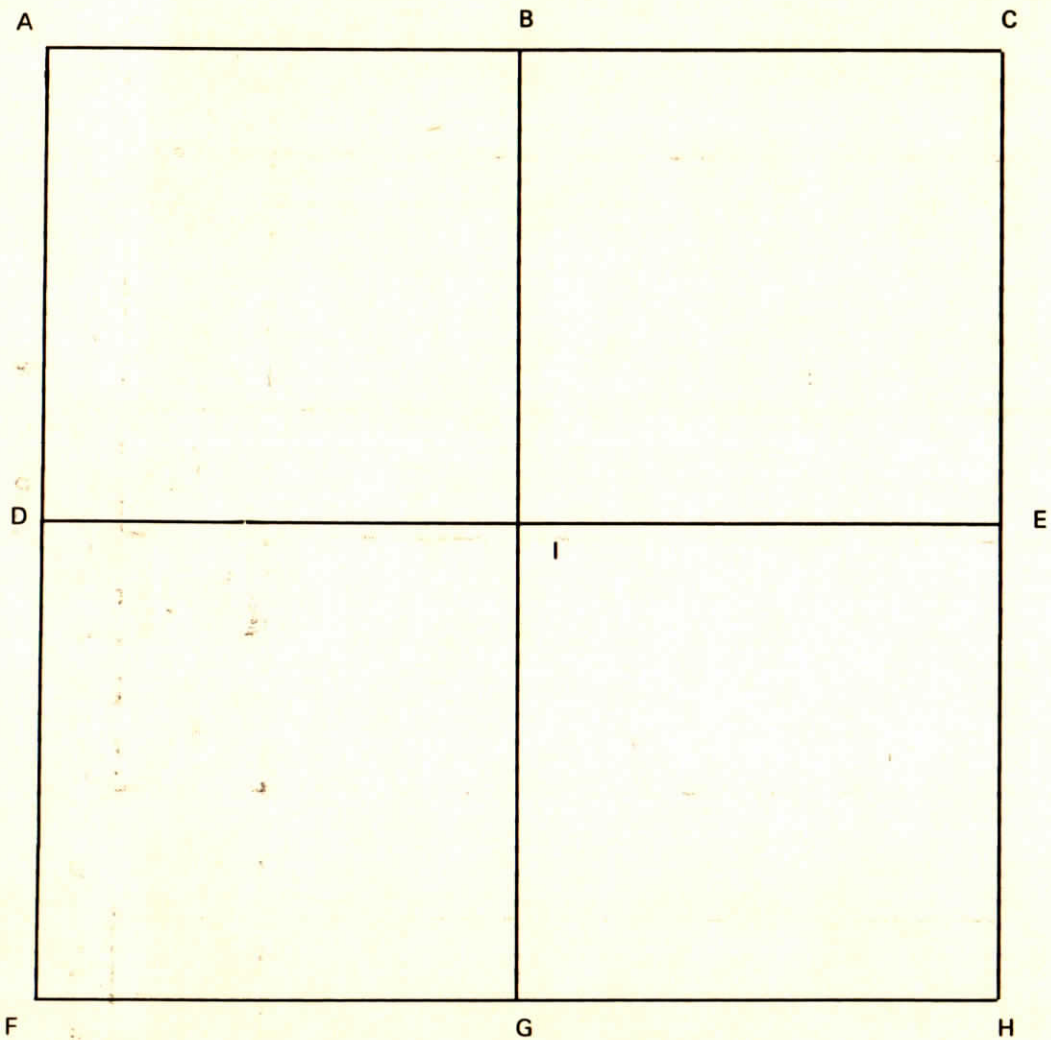
CORNER CODE SYSTEM
Warrick County



NOTES

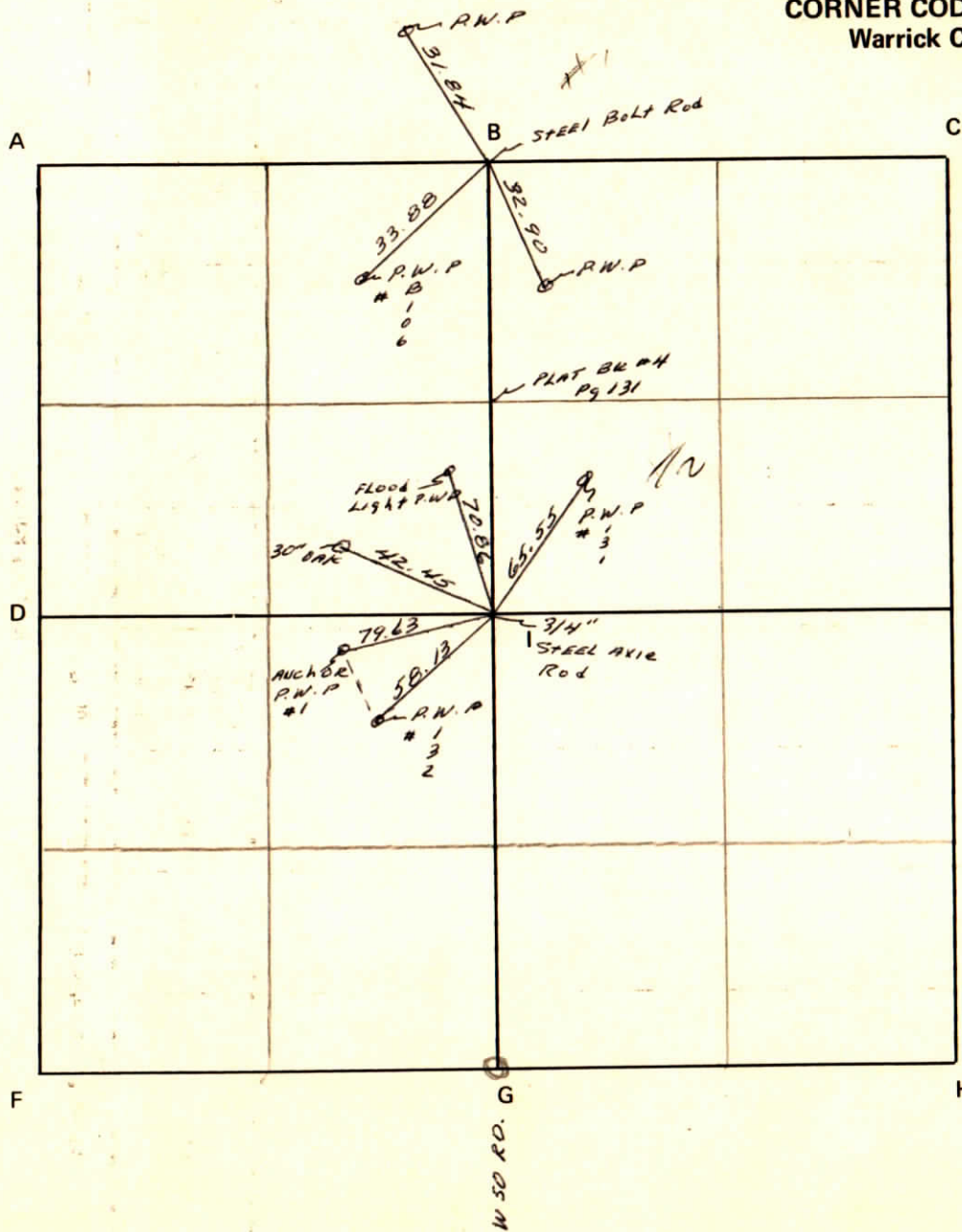
Section 23 Township 6 South Range 8 West 2nd P.M.

CORNER CODE SYSTEM
Warrick County



NOTES

CORNER CODE SYSTEM
Warrick County



NOTES

CORNER RECORD
WARRICK COUNTY



DESCRIPTION:

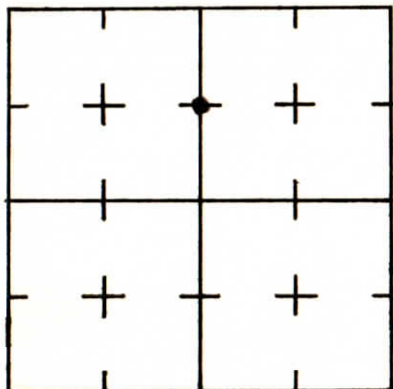
SW CORNER ~~NW 1/4~~ ~~NE 1/4~~

SECTION 24, T. 6 S. R. 8 W.

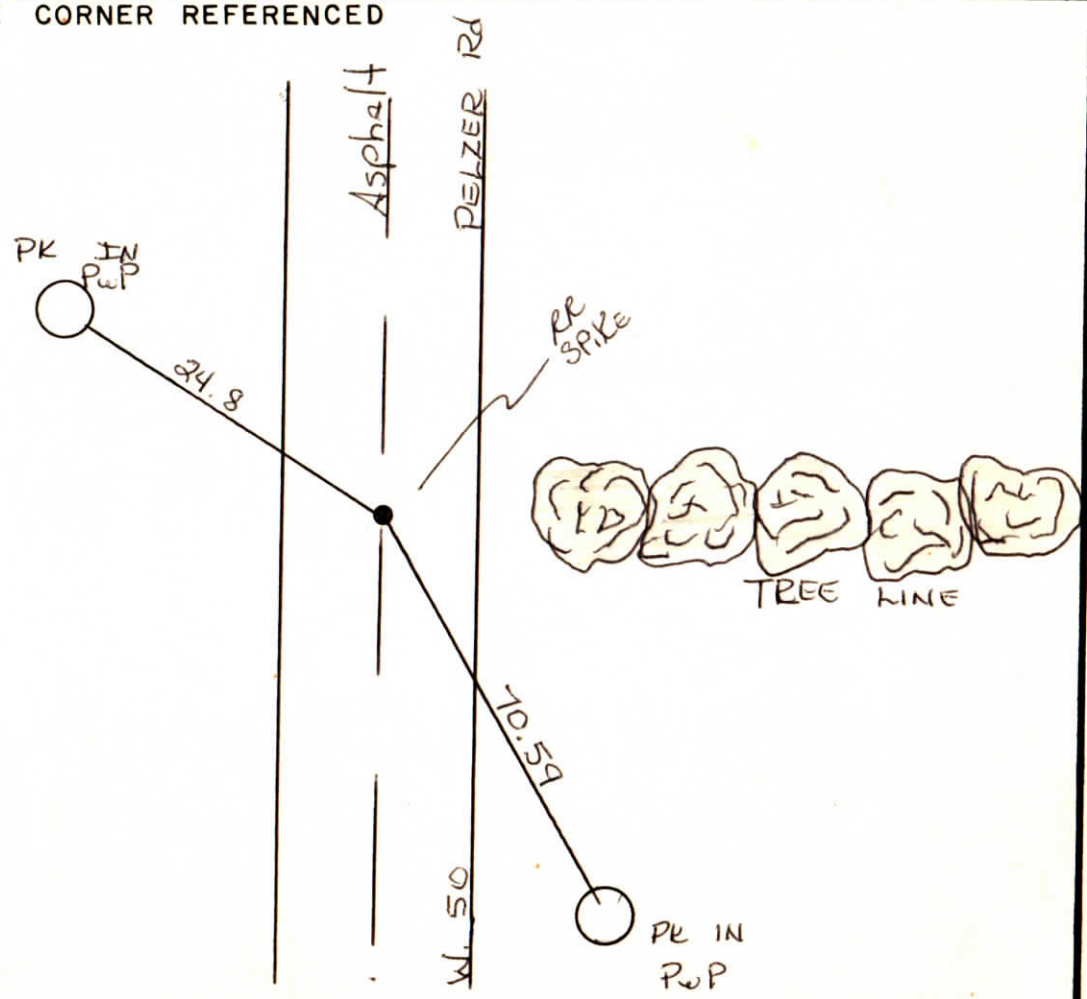
2nd PRINCIPAL MERIDIAN

WARRICK COUNTY SURVEYOR
MICHAEL F. FELDBUSCH, L.S.

INDICATE CORNER REFERENCED



DESCRIBE CORNER REFERENCED



STATE PLANE COORDINATE DATA

INDIANA ZONE: WEST

X _____

Y _____

ESTABLISHED BY:

APPROVED BY M.F. L.S.

DATE

REFERENCED BY:

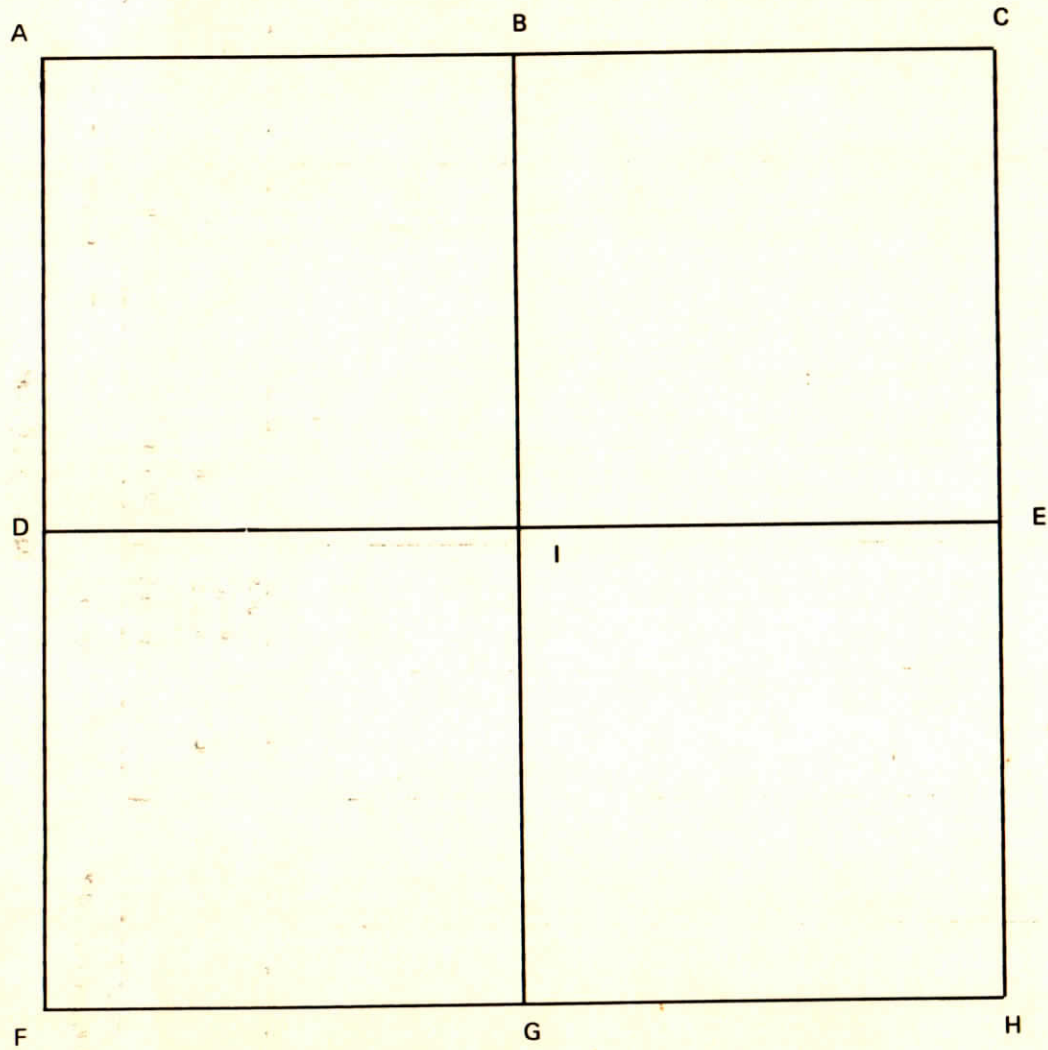
Hay Beck

DATE

2-1-84

Section 25 Township 6 South Range 8 West 2nd P.M.

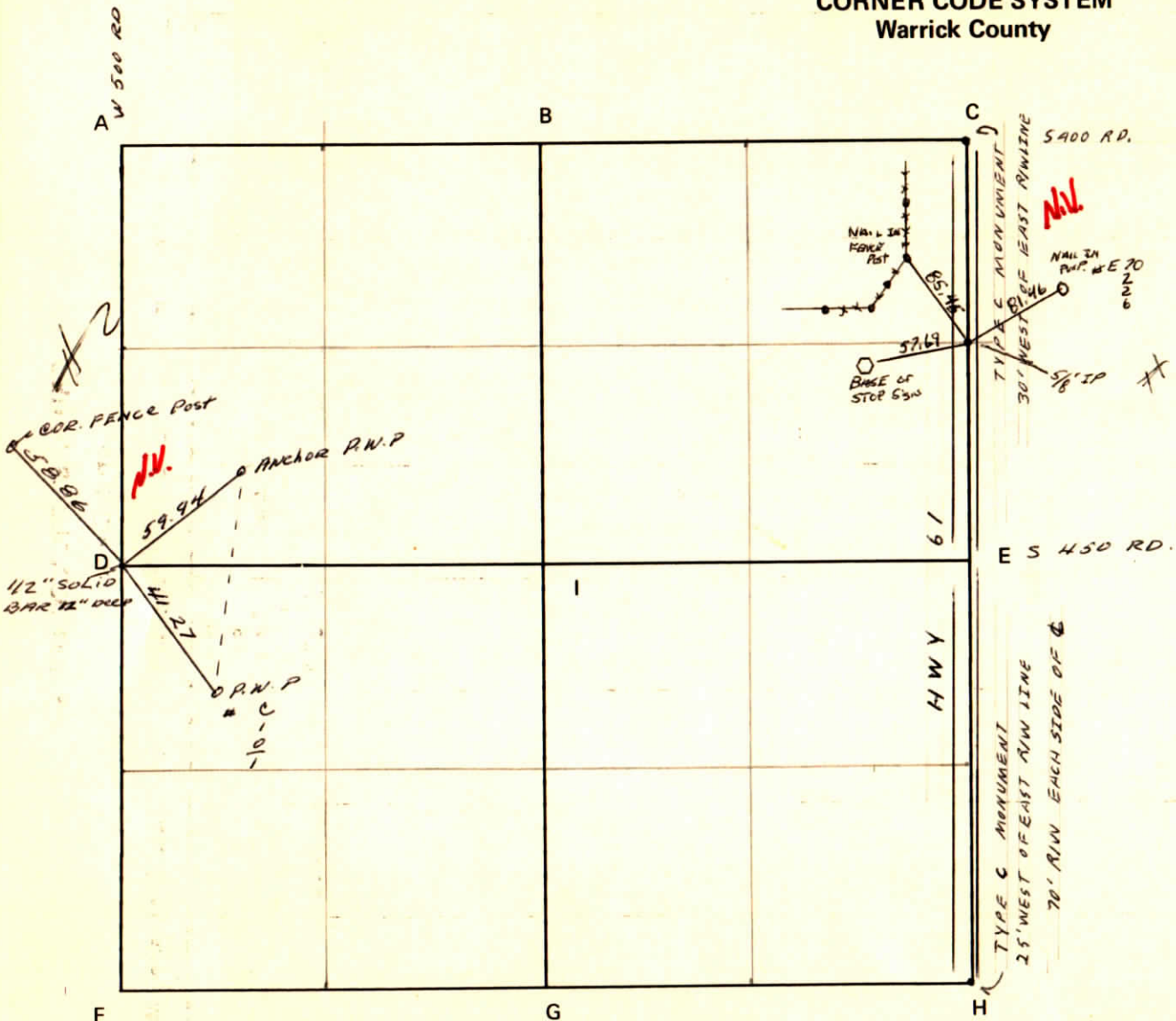
CORNER CODE SYSTEM
Warrick County



NOTES

CORNER CODE SYSTEM
Warrick County

NOTES



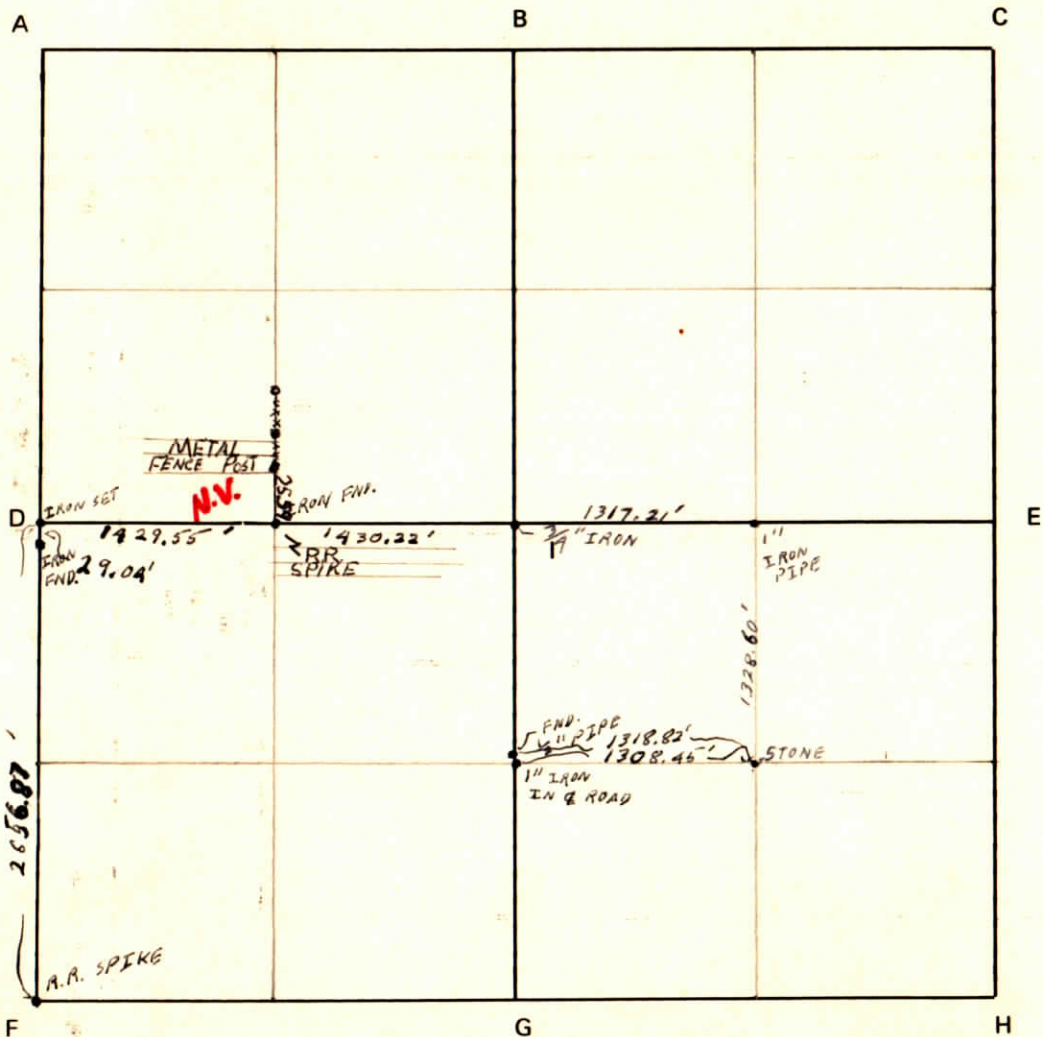
Section 30

Township 6 South

Range 8 West

2nd P.M.

CORNER CODE SYSTEM
Warrick County



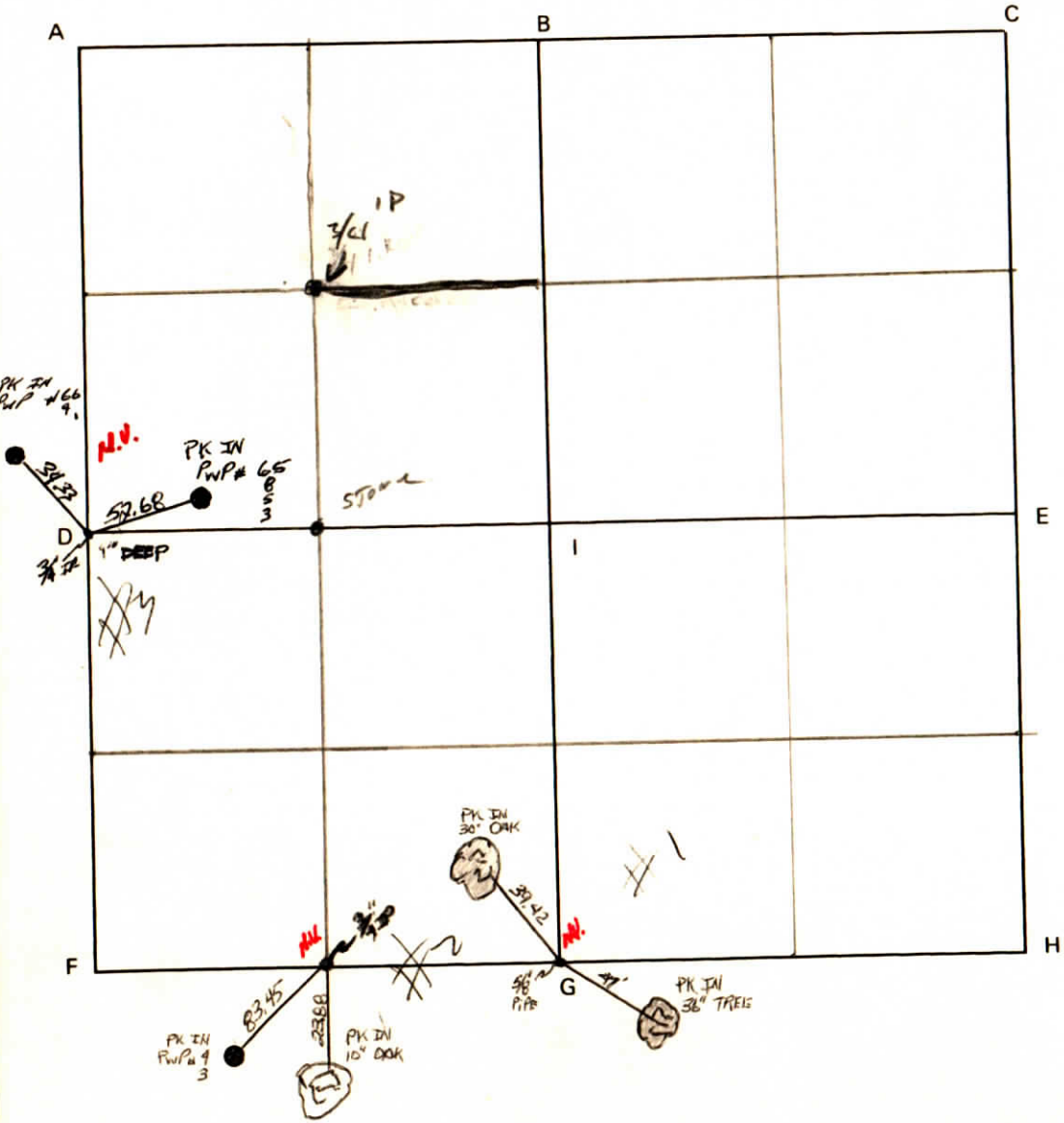
NOTES



WARRICK COUNTY SURVEYOR
MICHAEL F. FELDBUSCH

CORNER CODE SYSTEM
Warrick County

NOTES



CORNER RECORD
WARRICK COUNTY



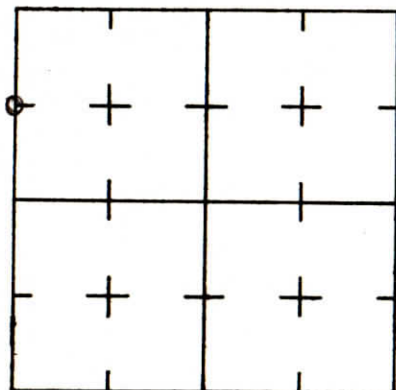
DESCRIPTION:

NW CORNER SW $\frac{1}{4}$ NW $\frac{1}{4}$

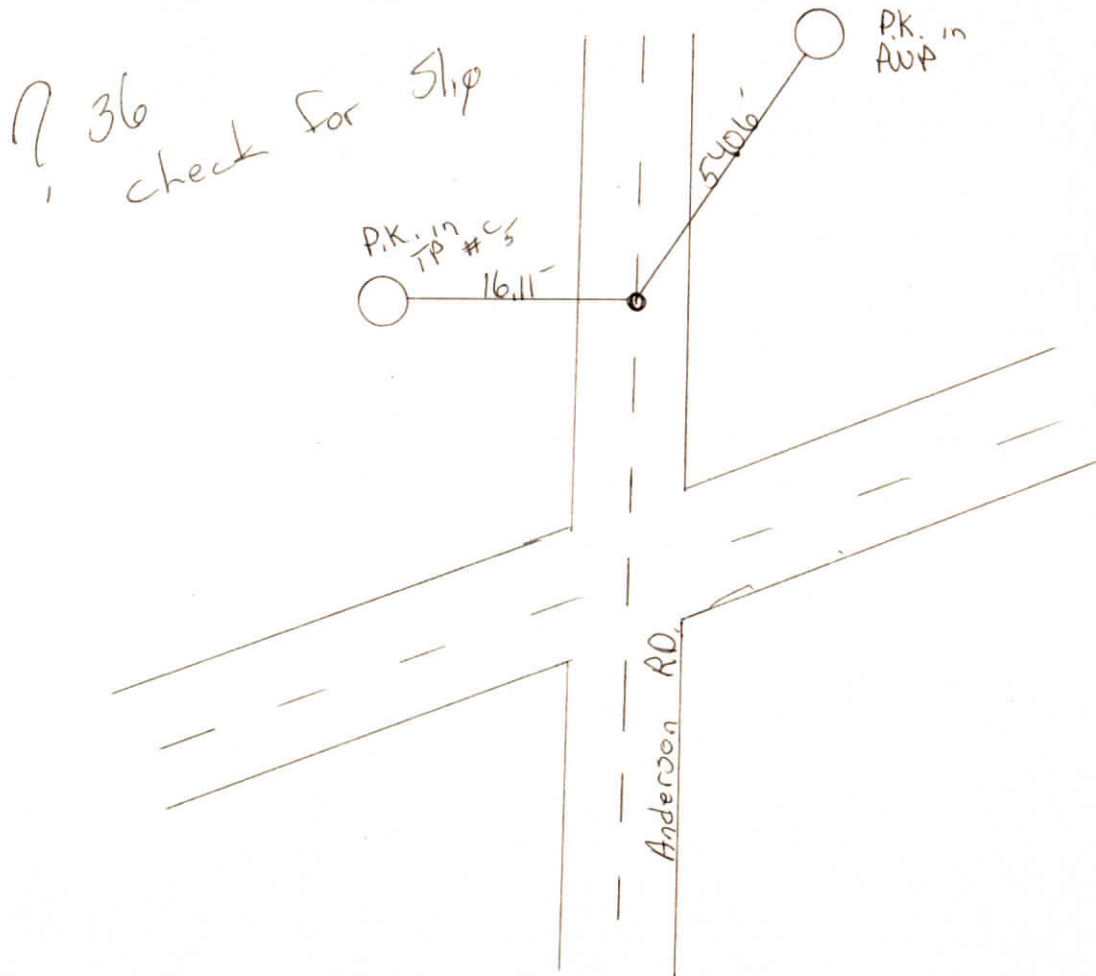
SECTION 31, T. 6 S. R. 8 W.
2nd PRINCIPLE MERIDIAN

WARRICK COUNTY SURVEYOR
MICHAEL IRVIN

INDICATE CORNER REFERENCED



DESCRIBE CORNER REFERENCED



STATE PLANE COORDINATE DATA

INDIANA ZONE: WEST

X _____

Y _____

ESTABLISHED BY:

APPROVED BY Not verified

DATE

REFERENCED BY: Gary + Jeff

DATE 7-30-86

CORNER RECORD
WARRICK COUNTY



DESCRIPTION:

SE CORNER NE 1/4 NE 1/4

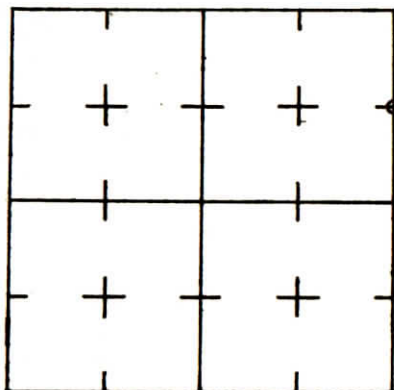
SECTION 31, T. 6 S. R. 8 W.

2nd PRINCIPLE MERIDIAN

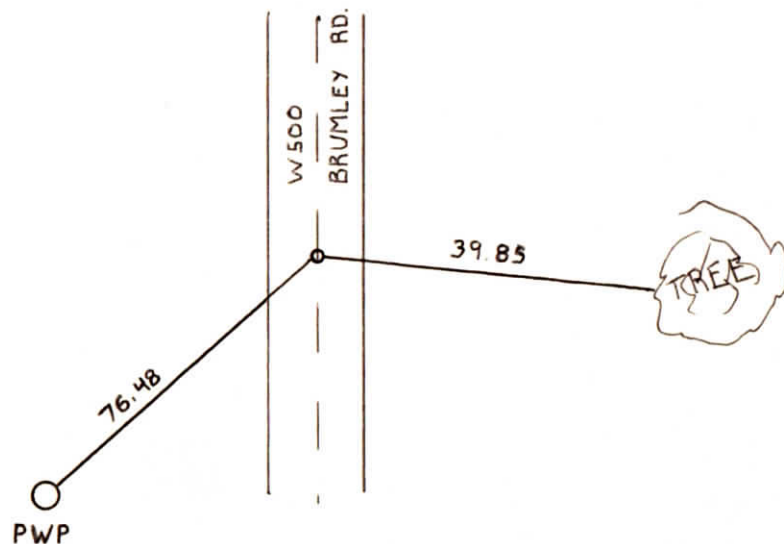
WARRICK COUNTY SURVEYOR

MICHAEL IRVIN

INDICATE CORNER REFERENCED



DESCRIBE CORNER REFERENCED



STATE PLANE COORDINATE DATA

INDIANA ZONE: WEST

X _____

Y _____

ESTABLISHED BY:

APPROVED BY

DATE

REFERENCED BY:

G.B.

DATE

9-11-84

**CORNER RECORD
WARRICK COUNTY**



DESCRIPTION:

NE CORNER SW¹/₄ NW¹/₄

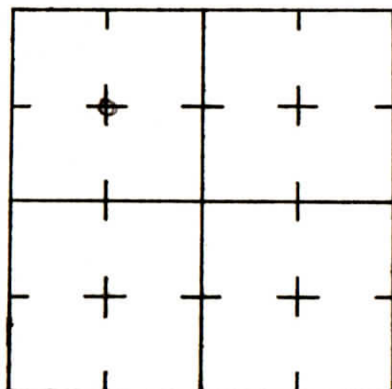
SECTION 31, T. 6 S. R. 8 W.

2nd PRINCIPLE MERIDIAN

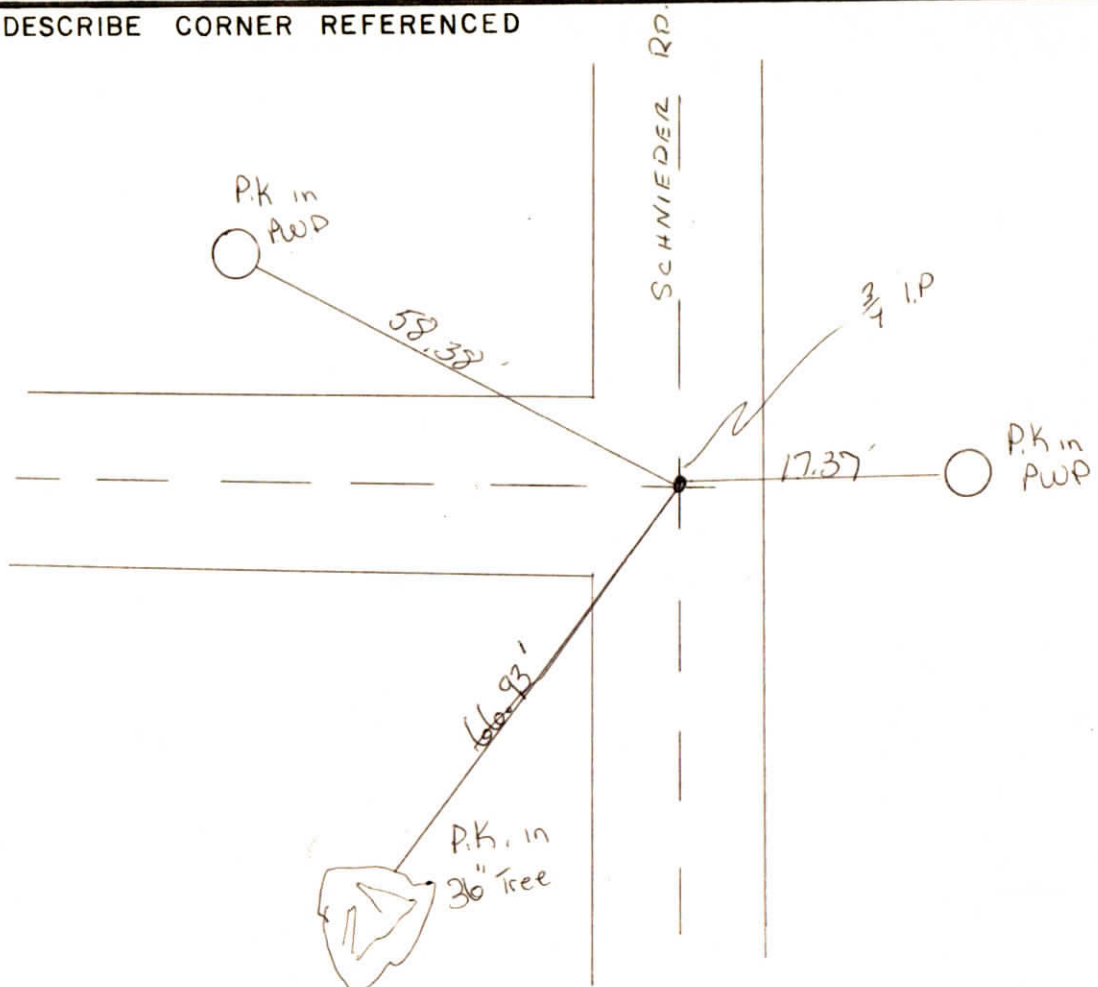
WARRICK COUNTY SURVEYOR

MICHAEL IRVIN

INDICATE CORNER REFERENCED



DESCRIBE CORNER REFERENCED



STATE PLANE COORDINATE DATA

INDIANA ZONE: WEST

X _____

Y _____

ESTABLISHED BY:

APPROVED BY Not Verified

DATE

REFERENCED BY:
Gary & Jeff

DATE
7-30-86

Section 31

Township 6 South

Range 8 West

2nd P.M.

CORNER CODE SYSTEM Warrick County

NOTES

