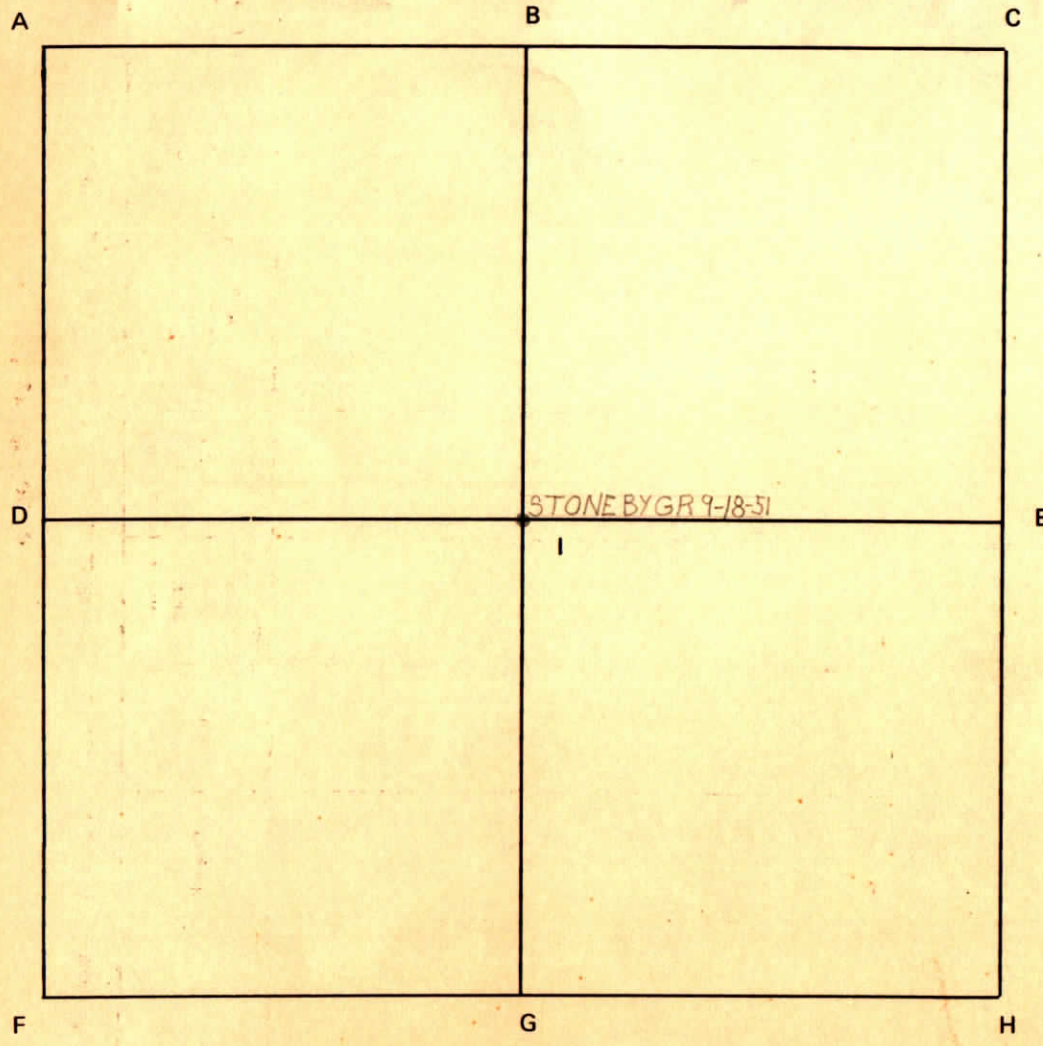


Section 1 Township 5 South Range 9 West 2nd P.M.

CORNER CODE SYSTEM
Warrick County



NOTES

RECORD OF SECTION CORNERS

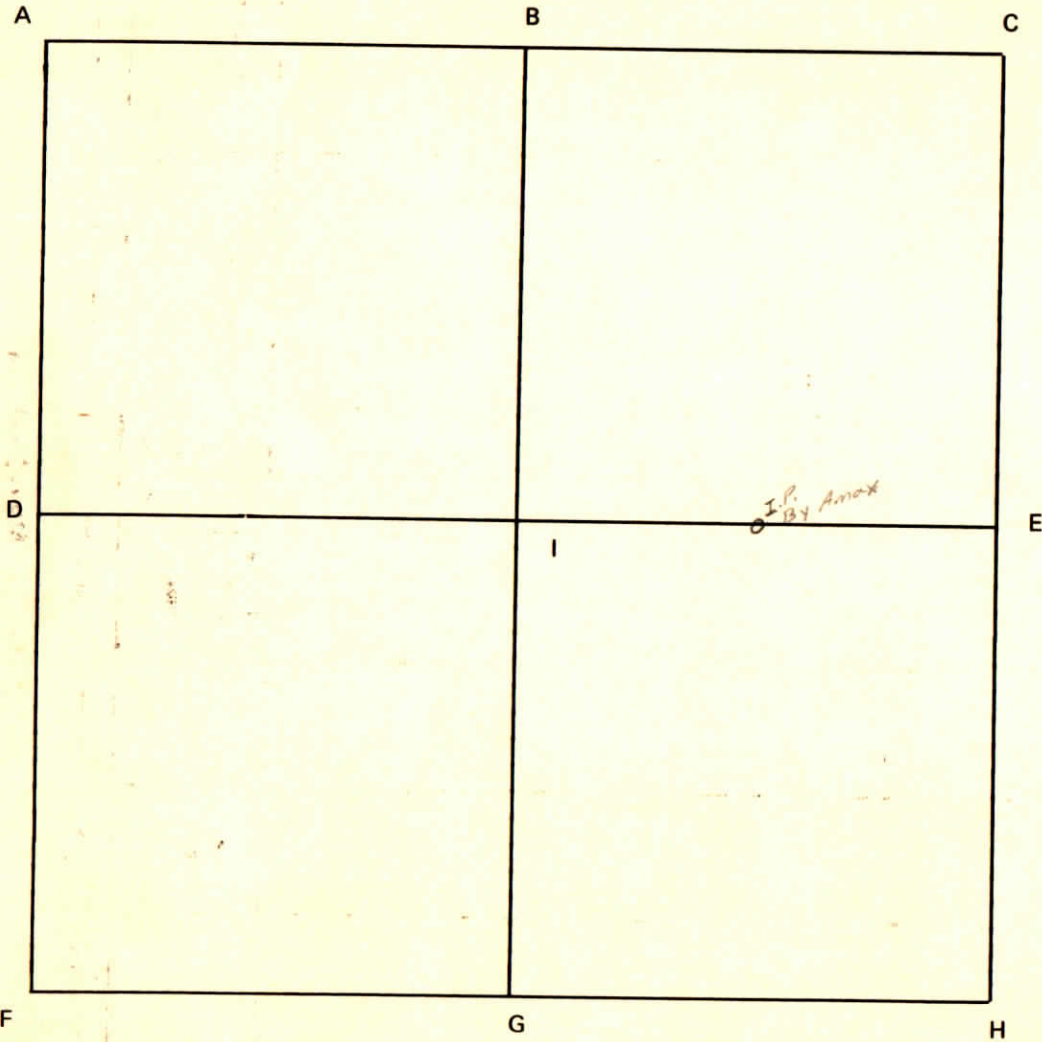
Warrick County

Section 1 Township 5 South Range 9 West 2nd Principle Meridian

Date	Cor	Description of		Distance from Corner	Azimuth from Corner (North Assumed)	Cond	Check By	Remarks
		Monument	Reference					
	A							
	B							
	C							
	D							
	E							
	F							
	G							
	H							
	I							

Section 2 Township 5 South Range 9 West 2nd P.M.

CORNER CODE SYSTEM
Warrick County



NOTES

RECORD OF SECTION CORNERS

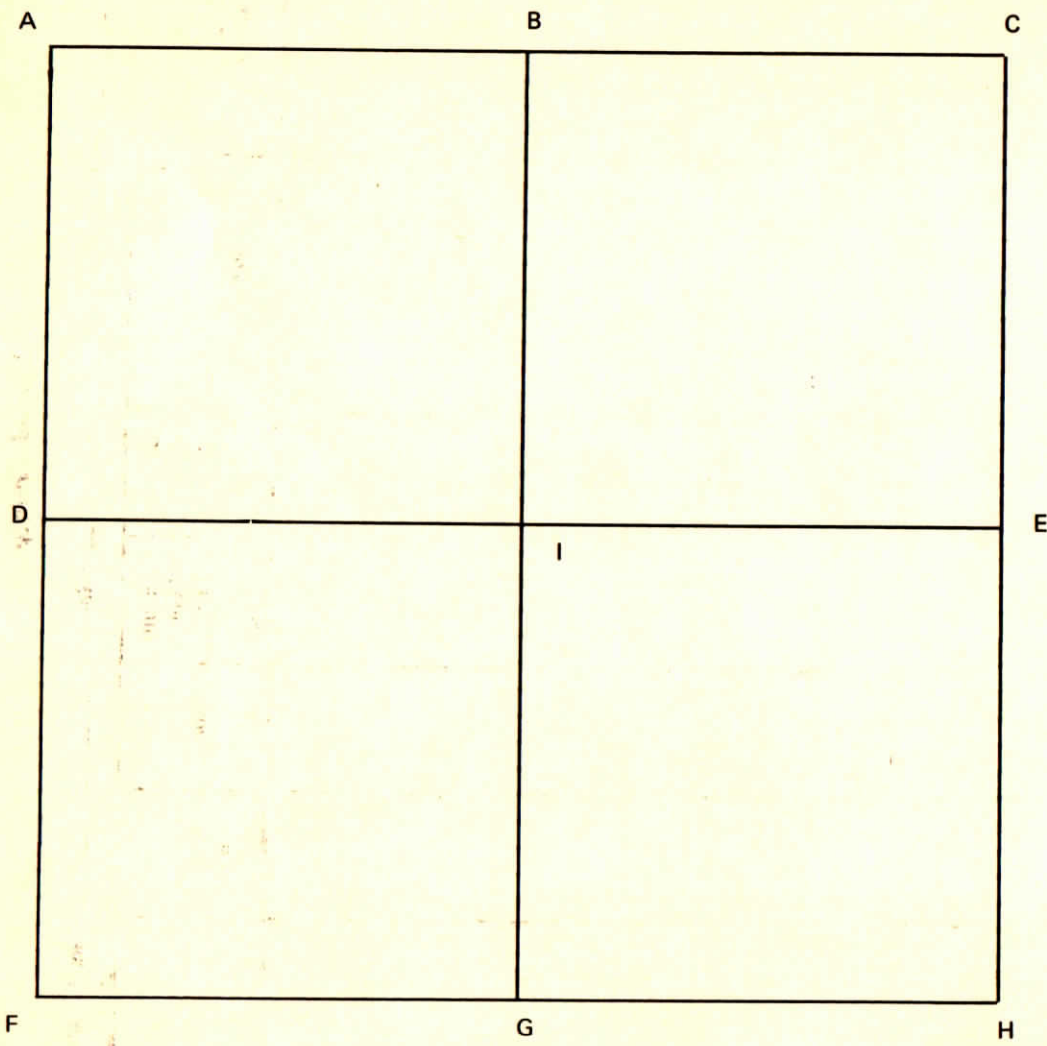
Warrick County

Section 2 Township 5 South Range 9 West 2nd Principle Meridian

Date	Cor	Description of		Distance from Corner	Azimuth from Corner (North Assumed)	Cond	Check By	Remarks
		Monument	Reference					
	A							
	B							
	C							
	D							
	E							
	F							
	G							
	H							
	I							

Section 3 Township 5 South Range 9 West 2nd P.M.

CORNER CODE SYSTEM
Warrick County



NOTES

RECORD OF SECTION CORNERS

Warrick County

Section 3 Township 5 South Range 9 West 2nd Principle Meridian

Date	Cor	Description of		Distance from Corner	Azimuth from Corner (North Assumed)	Cond	Check By	Remarks
		Monument	Reference					
	A							
	B							
	C							
	D							
	E							
	F							
	G							
	H							
	I							

CORNER RECORD
WARRICK COUNTY

DESCRIPTION: CENTER OF SEC.

CORNER

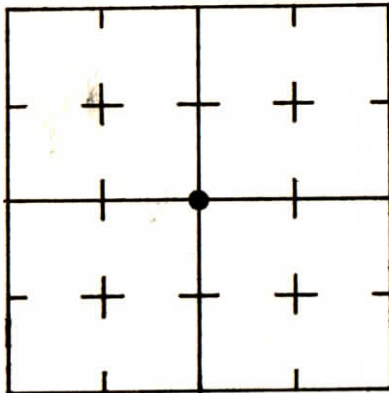
SECTION 4, T. 5 S. R. 9 W.

2nd PRINCIPAL MERIDIAN

WARRICK COUNTY SURVEYOR
MICHAEL F. FELDBUSCH, L.S.



INDICATE CORNER REFERENCED



DESCRIBE CORNER REFERENCED

N.V.

3/4" PIPE UNDER 8" CONCRETE Block
PK IN 24" EIM

PK IN 18" OAK
1.6

2.56

GRAVEL

N. 550

W. 950

STATE PLANE COORDINATE DATA

INDIANA ZONE: WEST

X _____

Y _____

ESTABLISHED BY:

APPROVED BY

DATE

REFERENCED BY:

DATE

Ray Beck

523-83

CORNER RECORD
WARRICK COUNTY

DESCRIPTION:

NE CORNER SE 1/4

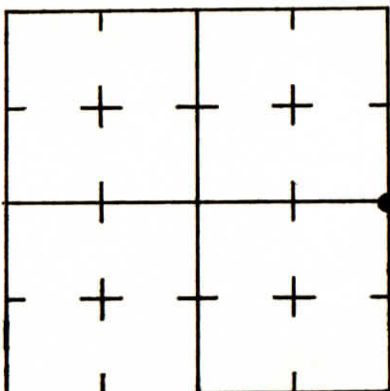
SECTION 4, T. 5 S. R. 9 W.

2nd PRINCIPAL MERIDIAN

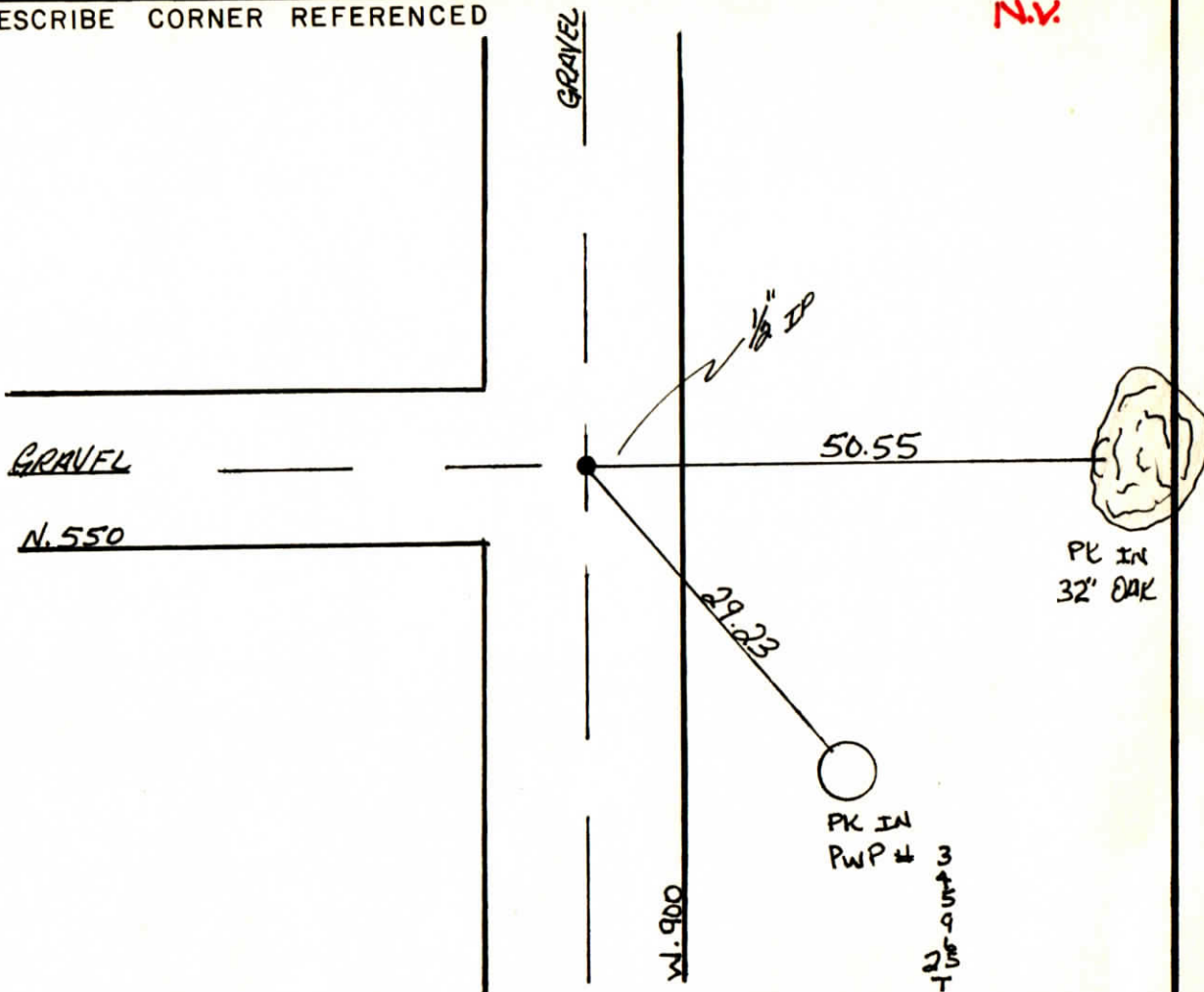
WARRICK COUNTY SURVEYOR
MICHAEL F. FELDBUSCH, L.S.



INDICATE CORNER REFERENCED



DESCRIBE CORNER REFERENCED



STATE PLANE COORDINATE DATA

INDIANA ZONE: WEST

X _____

Y _____

ESTABLISHED BY:

APPROVED BY

DATE

REFERENCED BY:

DATE

Greg Beck

5-23-83

CORNER RECORD
WARRICK COUNTY

DESCRIPTION :

SW CORNER NE¹/₄ NE¹/₄

SECTION 4, T. 5 S.

R. 9 W.

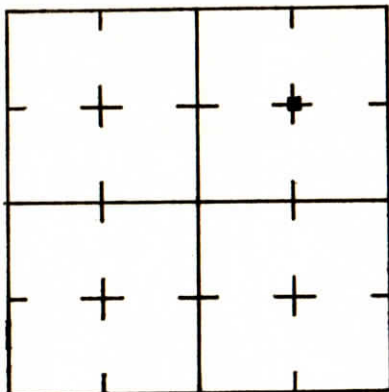
2nd PRINCIPAL MERIDIAN

WARRICK COUNTY SURVEYOR
MICHAEL F. FELDBUSCH, L.S.

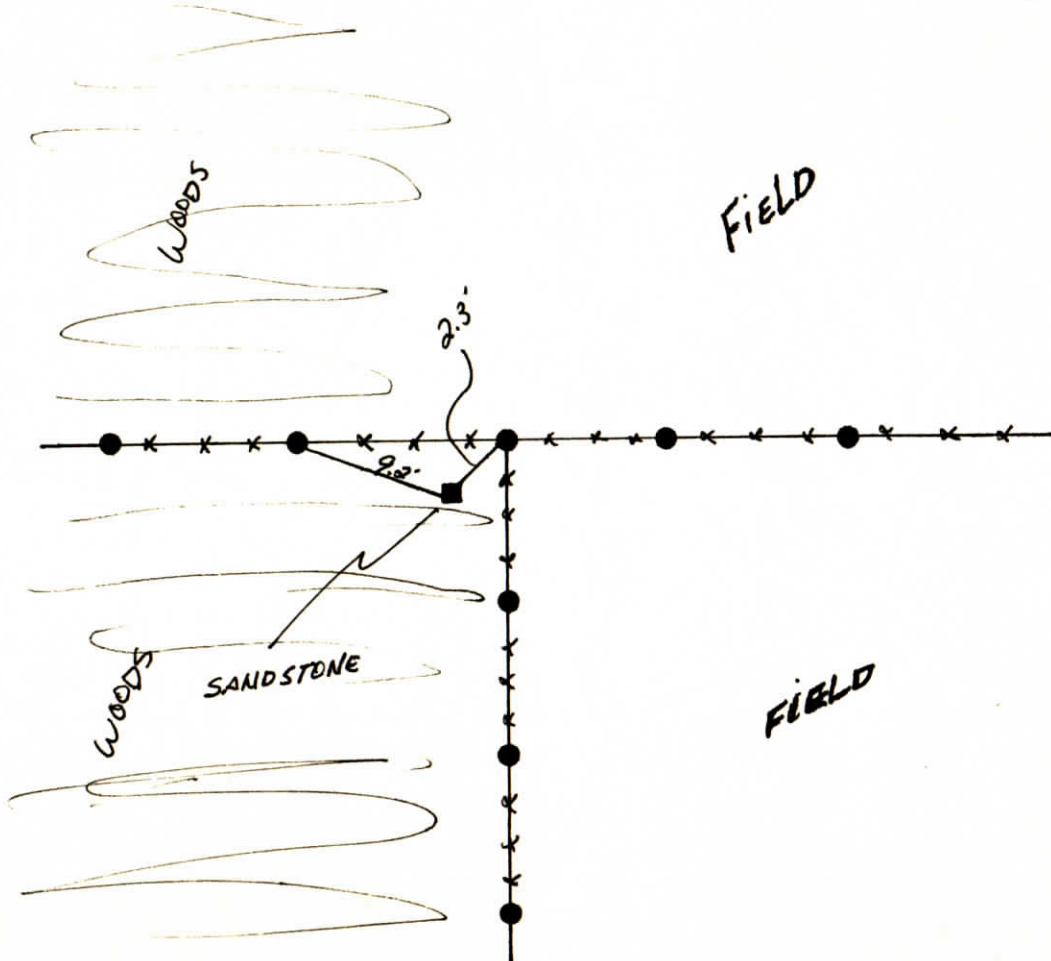


NOT VERIFIED

INDICATE CORNER REFERENCED



DESCRIBE CORNER REFERENCED



STATE PLANE COORDINATE DATA

INDIANA ZONE: WEST

X _____

Y _____

ESTABLISHED BY:

APPROVED BY

DATE

REFERENCED BY:

DATE

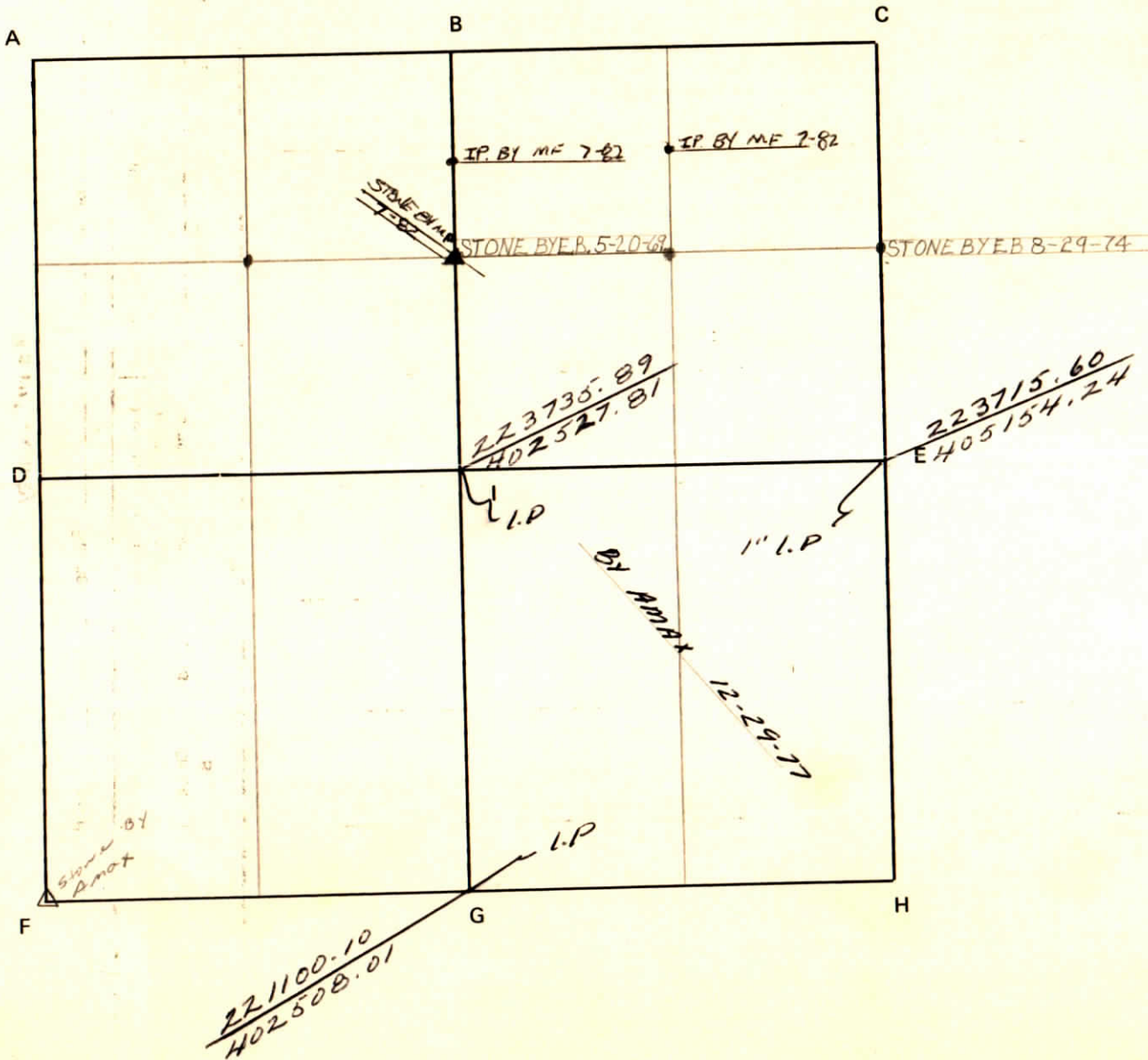
Gay Beck

7-31-84

Section 4 Township 5 Range 9 2nd P.M.

CORNER CODE SYSTEM
Warrick County

NOTES



CORNER RECORD
WARRICK COUNTY

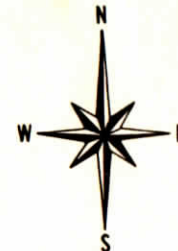
DESCRIPTION:

NW CORNER SW 1/4

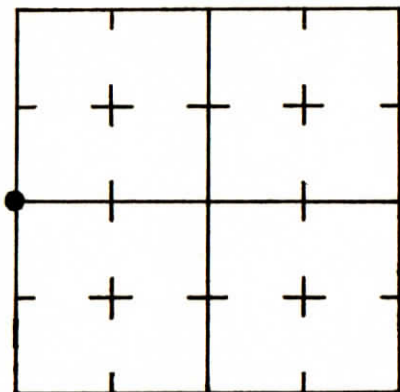
SECTION 6, T. 5 S. R. 9 W.

2nd PRINCIPAL MERIDIAN

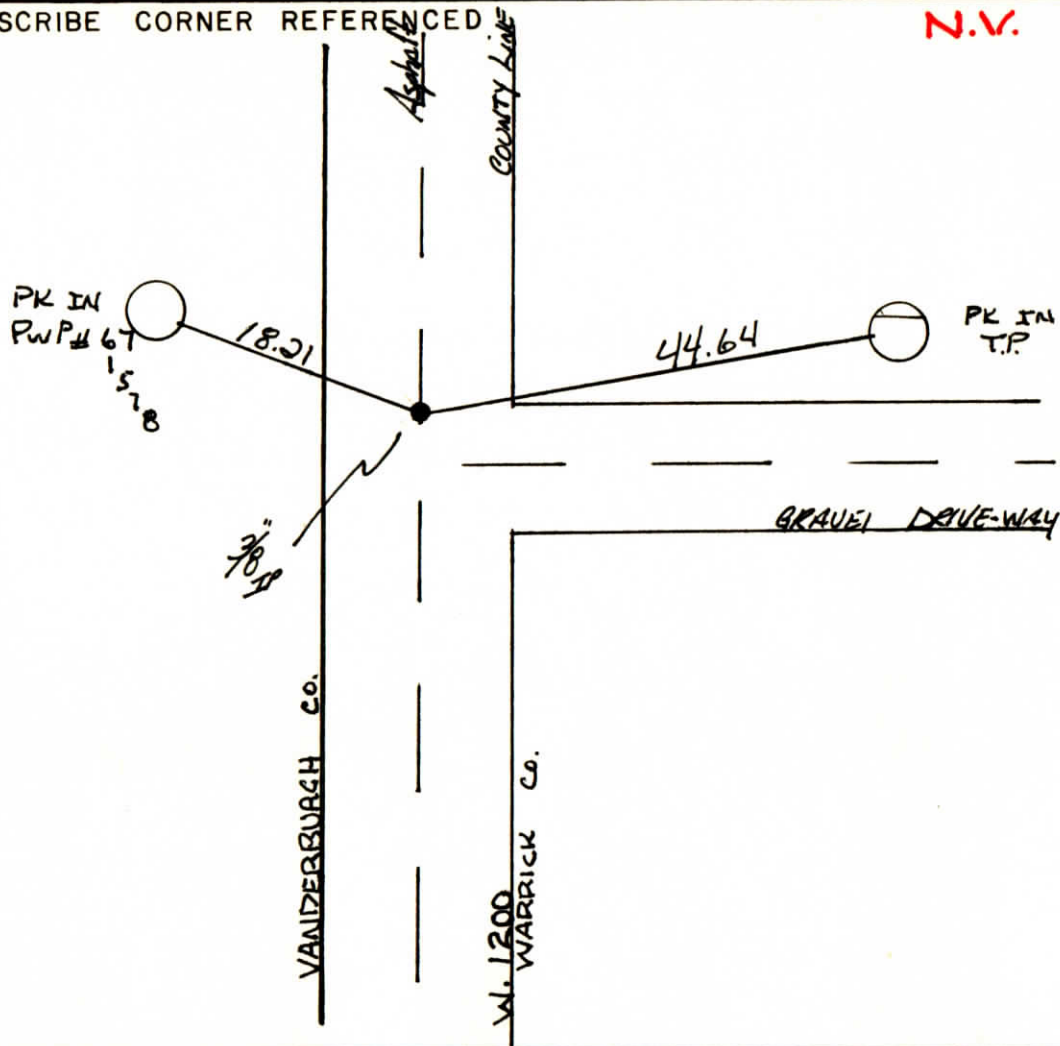
WARRICK COUNTY SURVEYOR
MICHAEL F. FELDBUSCH, L.S.



INDICATE CORNER REFERENCED



DESCRIBE CORNER REFERENCED



STATE PLANE COORDINATE DATA

INDIANA ZONE: WEST

X _____

Y _____

ESTABLISHED BY:

APPROVED BY

DATE

REFERENCED BY:

DATE

Lang Beck

5-16-83

CORNER CODE SYSTEM
Warrick County

NOTES

A ~~226613.57~~
~~388166.74~~

C Stone BY
Amat

IRON
BY AMAX
12-29-77

IP BY
Amat

~~221228.89~~
~~393333.63~~

I.P.
BY AMAX
12-29-77

W.I.P.?

IP BY
AMAX

IRON BY AMAX
12-29-77

H
STONE BY AMAX
12-29-77
IP BY AMAX

Warrick County

RECORD OF SECTION CORNERS

Warrick County

Section 6 Township 5 Range 9 2nd Principle Meridian

Date	Cor	Description of		Distance from Corner	Azimuth from Corner (North Assumed)	Cond	Check By	Remarks
		Monument	Reference					
	A							
	B							
	C							
	D							
	E							
	F							
	G							
	H							
	I							

**CORNER RECORD
WARRICK COUNTY**

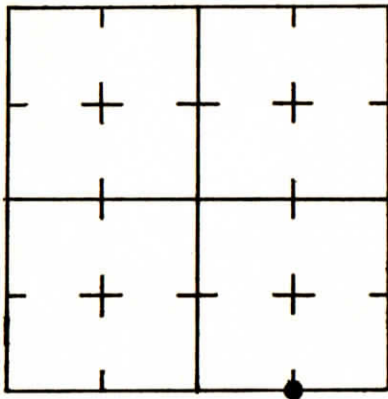
DESCRIPTION:

SW CORNER SE¹/₄ SE¹/₄
SECTION 6, T. 5 S. R. 9 W.
2nd PRINCIPAL MERIDIAN

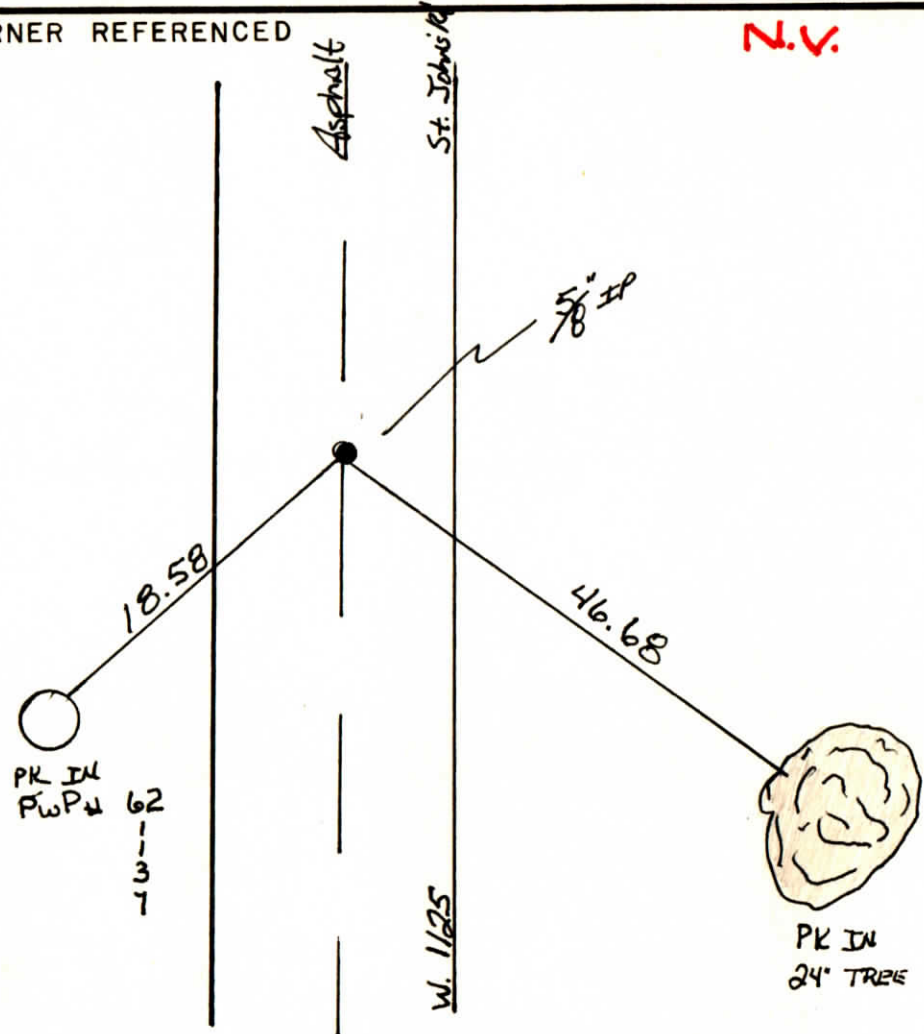
**WARRICK COUNTY SURVEYOR
MICHAEL F. FELDBUSCH, L.S.**



INDICATE CORNER REFERENCED



DESCRIBE CORNER REFERENCED



N.V.

STATE PLANE COORDINATE DATA

INDIANA ZONE: WEST

X _____

Y _____

ESTABLISHED BY:

APPROVED BY

DATE

REFERENCED BY:

DATE

Gay Bud

5-16-83

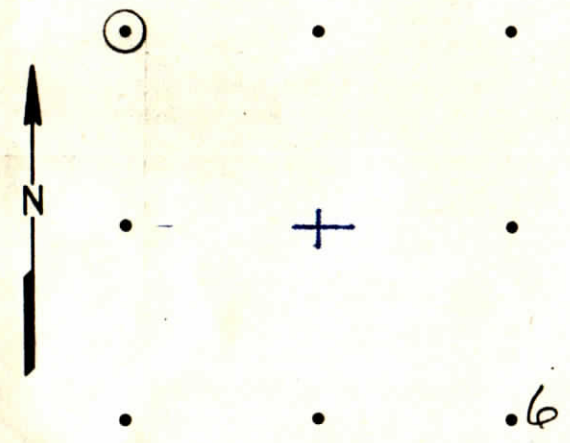
nw cor nw 1/4

CORNER RECORD

INDE.
 FILE NO. A-1 sec. 6
 T 5S R 9W
 Principal Meridian 2nd

COUNTY WARRICK
 STATE INDIANA

CORNER DIAGRAM (160 AC.)



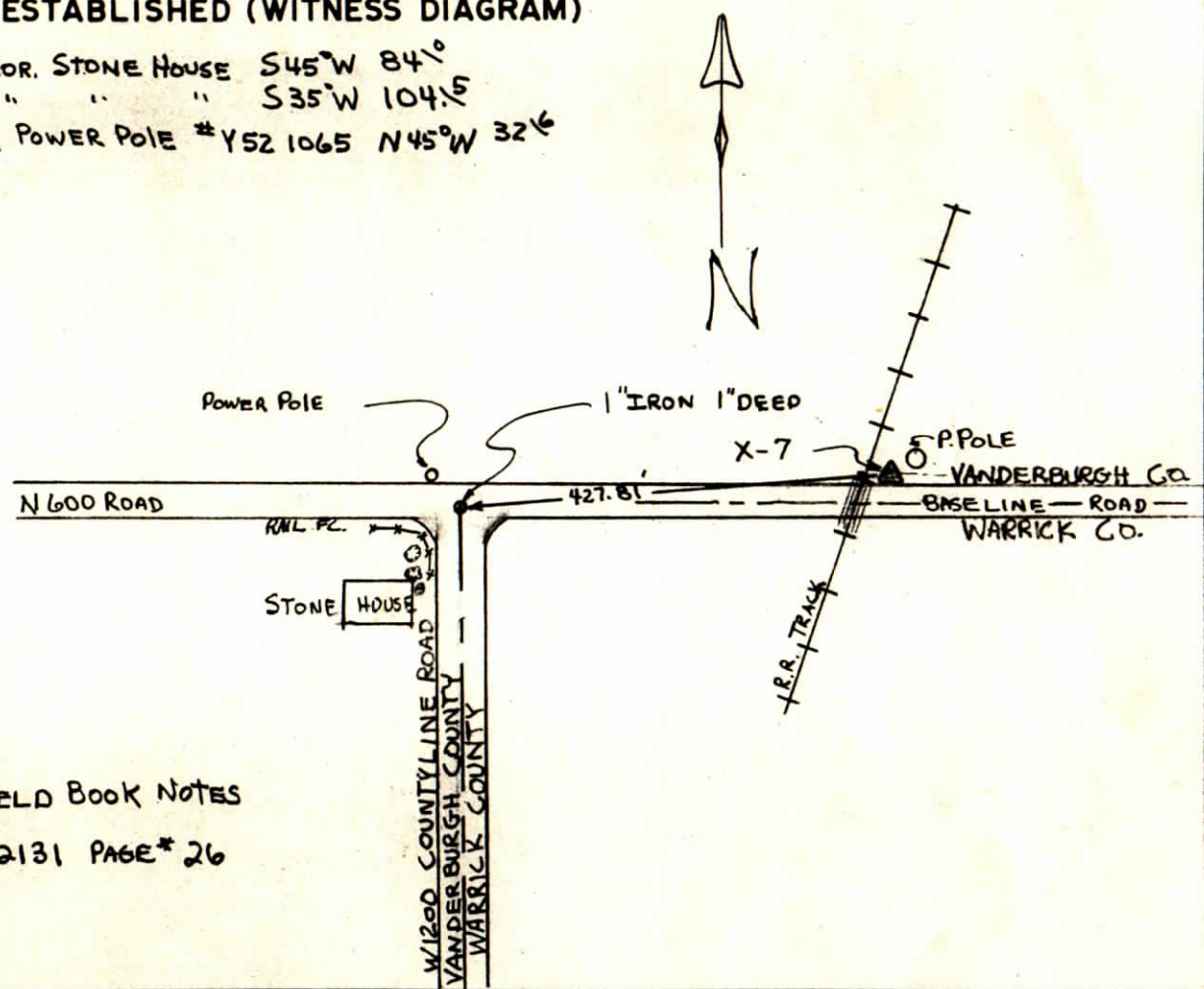
INDICATE SECTION CENTERS

PLANE COORDINATE POSITION DATA

STATE IND ZONE WEST
 X 388166.74
 Y 226628.01
 Established by _____
 SURVEYOR

DESCRIBE CORNER MONUMENT FOUND OR ESTABLISHED (WITNESS DIAGRAM)

COR. STONE HOUSE S45°W 84°
 " " " S35°W 104.5
 ⚡ POWER POLE #Y521065 N45°W 32.6



FIELD BOOK NOTES
 # 2131 PAGE * 26

APPROVED BY _____ TITLE _____ DATE _____

CORNER RECORD

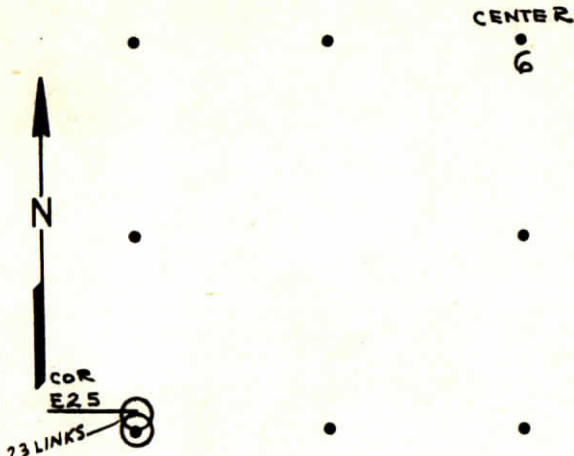
NW cor. NW 1/4

INDEX

FILE NO. E - Sec. 7
T 5S R 9W
Principal Meridian 2ND

COUNTY WARRICK
STATE INDIANA

CORNER DIAGRAM (160 AC.)



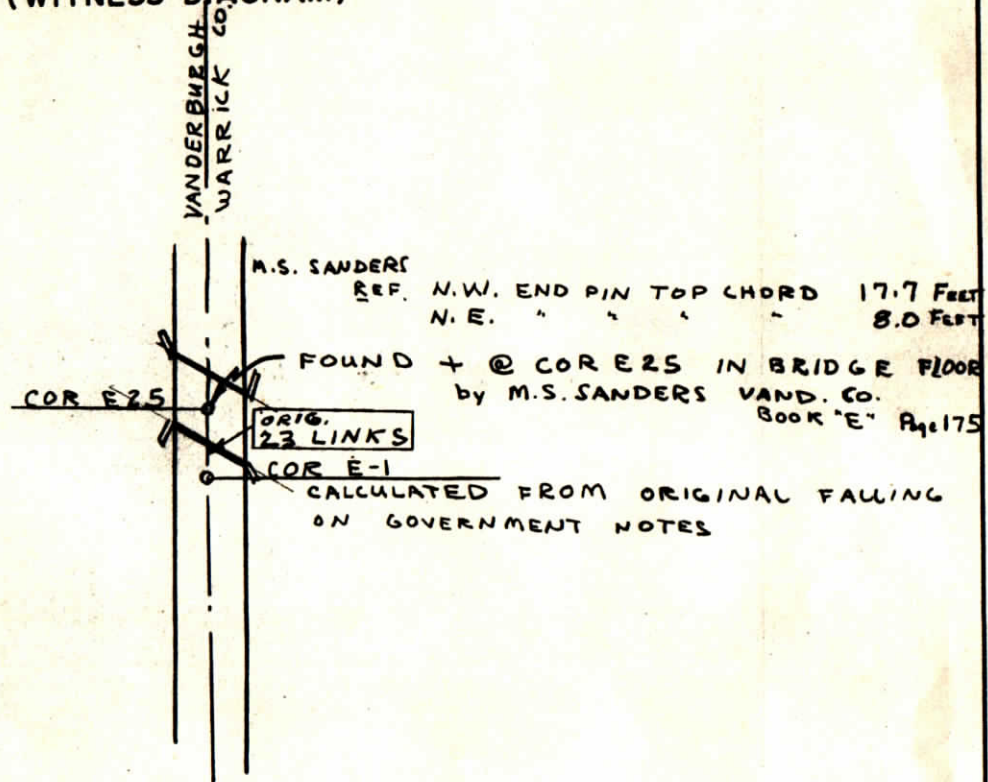
INDICATE SECTION CENTERS

PLANE COORDINATE POSITION DATA

STATE IND ZONE WEST
X 388104.80
Y 221307.89

Established by _____
SURVEYOR

DESCRIBE CORNER MONUMENT FOUND OR ESTABLISHED (WITNESS DIAGRAM)



APPROVED BY

TITLE

DATE

RECORD OF SECTION CORNERS

Warrick County

Section 7 Township 5 South Range 9 West 2nd Principle Meridian

Date	Cor	Description of		Distance from Corner	Azimuth from Corner (North Assumed)	Cond	Check By	Remarks
		Monument	Reference					
	A							
	B							
	C							
	D							
	E							
	F							
	G							
	H							
	I							

CORNER RECORD
WARRICK COUNTY

DESCRIPTION:

SW CORNER SW 1/4

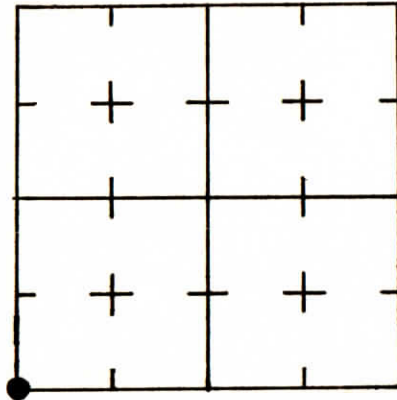
SECTION 7, T. 5 S. R. 9 W.

2nd PRINCIPAL MERIDIAN

WARRICK COUNTY SURVEYOR
MICHAEL F. FELDBUSCH, L.S.

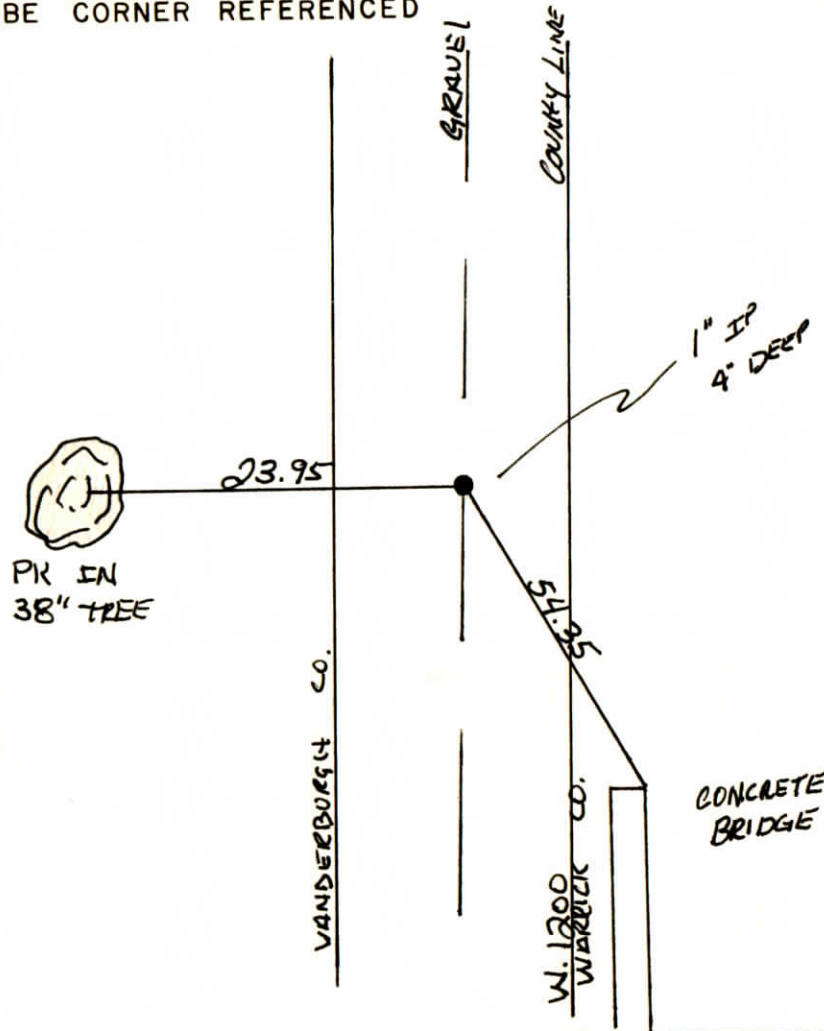


INDICATE CORNER REFERENCED



DESCRIBE CORNER REFERENCED

N.V.



STATE PLANE COORDINATE DATA

INDIANA ZONE: WEST

X _____

Y _____

ESTABLISHED BY:

APPROVED BY

DATE

REFERENCED BY:

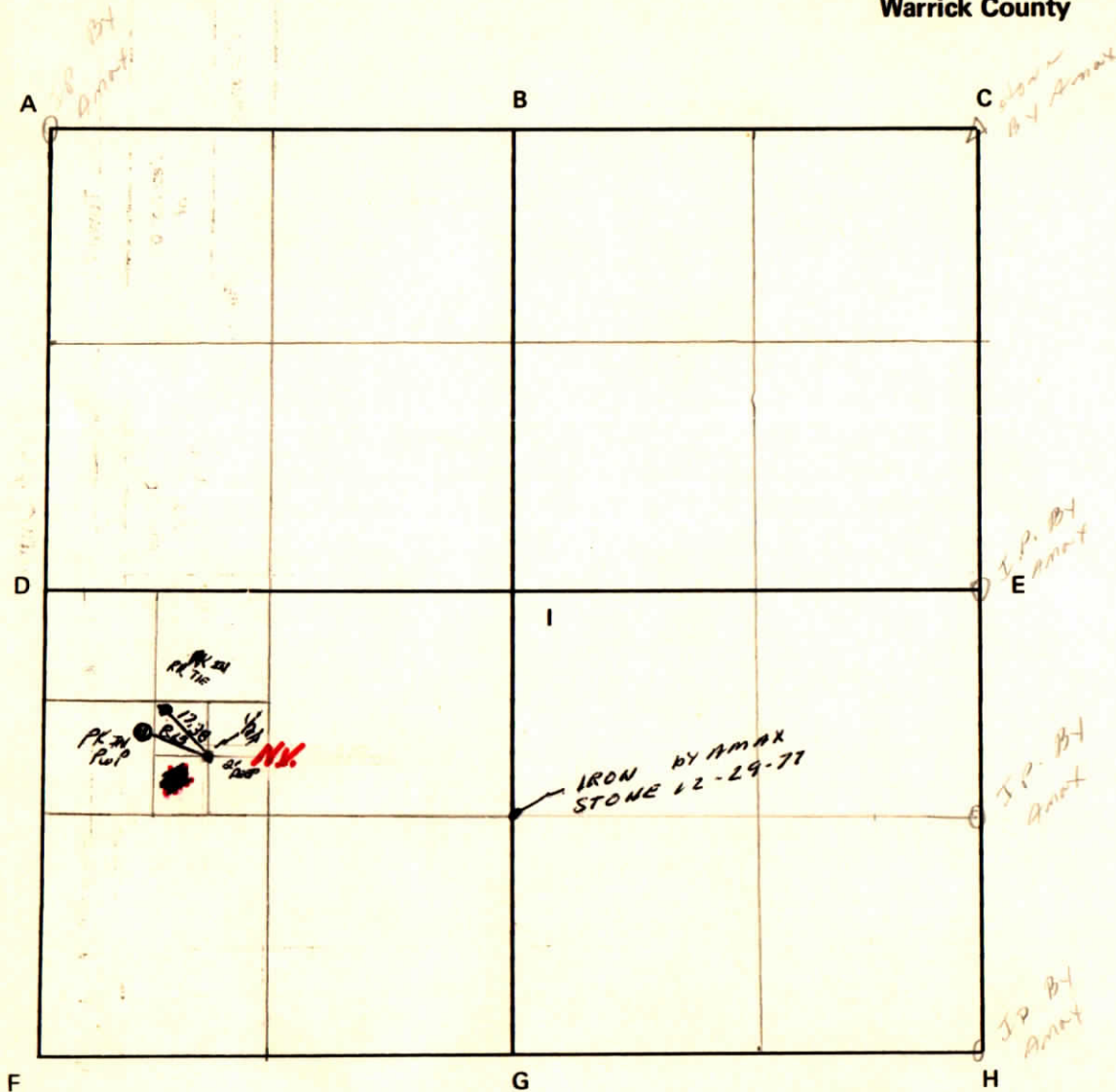
Larry Beck

DATE

5-16-83

Section 8 Township 5 South Range 9 West 2nd P.M.

CORNER CODE SYSTEM
Warrick County



NOTES

RECORD OF SECTION CORNERS

Warrick County

Section 8 Township 5 South Range 9 West 2nd Principle Meridian

Date	Cor	Description of		Distance from Corner	Azimuth from Corner (North Assumed)	Cond	Check By	Remarks
		Monument	Reference					
	A							
	B							
	C							
	D							
	E							
	F							
	G							
	H							
	I							

CORNER RECORD
WARRICK COUNTY

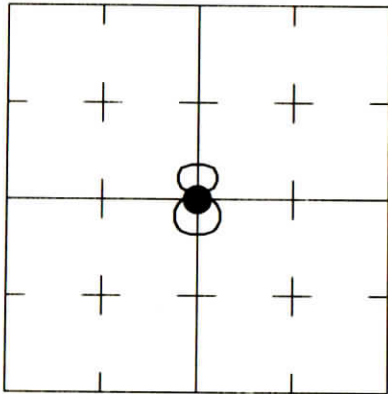


DESCRIPTION:
SOUTHWEST CORNER NORTHEAST QUARTER
SECTION 8, T. 5 S., R. 9 W.
2nd PRINCIPAL MERIDIAN

WARRICK COUNTY SURVEYOR
KARAN HARGRAVE-BARNHILL

FOR NOTES ON CORNER HISTORY SEE REVERSE.

INDICATE CORNER REFERENCED:

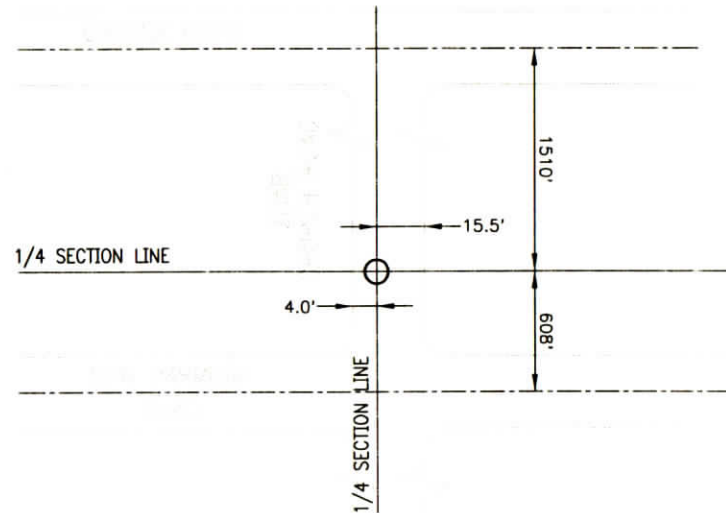


MONUMENT TYPE: ALUM. DISK IN MON. BOX
SIZE: 3-1/4" DIAM.
DEPTH/HEIGHT: DISK 4" BELOW PVMT. GRADE
REFERENCE TIE DRAWING:



Stamping
on Disk

NOTE: Disk is a 3-1/4" aluminum disk w/magnet on a 3/4" x 36" rod with detachable magnetic base, inside a cast-iron monument box stamped "SURVEY" (10" diameter rim of box is flush with asphalt pavement.)



STATE PLANE COORDINATE DATA:
INDIANA WEST ZONE, NAD 83 (1997)
U.S. SURVEY FEET

X _____

Y _____

COORDINATES ESTABLISHED BY:

APPROVED BY:

DATE:

REFERENCED BY: D.DREES/G.M.BURRESS DATE: 6/9/03

APPROVED BY: M.BARTON, RLS#20200055 DATE: 11/3/03

CORNER FILE CODE:
T5S-R9W-G-07

CORNER HISTORY:

CORNER FILE CODE:
T5S-R9W-G-07

ORIGINAL USPLS SURVEY: (Center of Section not monumented by USPLS Survey)

COUNTY SURVEYOR'S BOOKS:

OTHER SURVEYS AND PLATS:

VERIFICATION OF CORNER POSITION: The center of Section 8 was re-established at the bearing-bearing intersection between quarter-section corners. For additional information see the plat of survey recorded 7/11/03 as Document 2003R011600.

Mark A. Barton 11/3/03

CORNER RECORD
WARRICK COUNTY

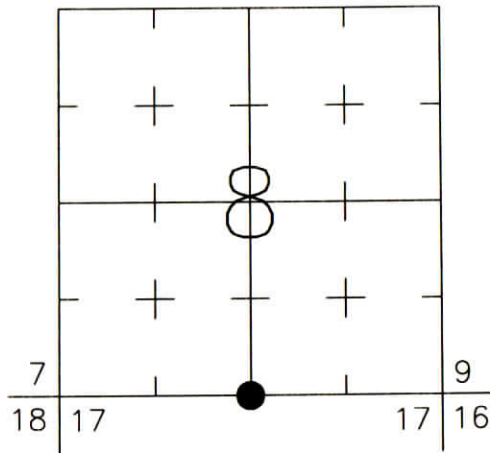


DESCRIPTION:
SOUTHWEST CORNER SOUTHEAST QUARTER
SECTION 8, T. 5 S., R. 9 W.
2nd PRINCIPAL MERIDIAN

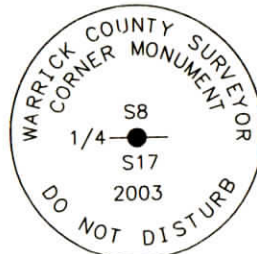
WARRICK COUNTY SURVEYOR
KARAN HARGRAVE-BARNHILL

FOR NOTES ON CORNER HISTORY SEE REVERSE.

INDICATE CORNER REFERENCED:

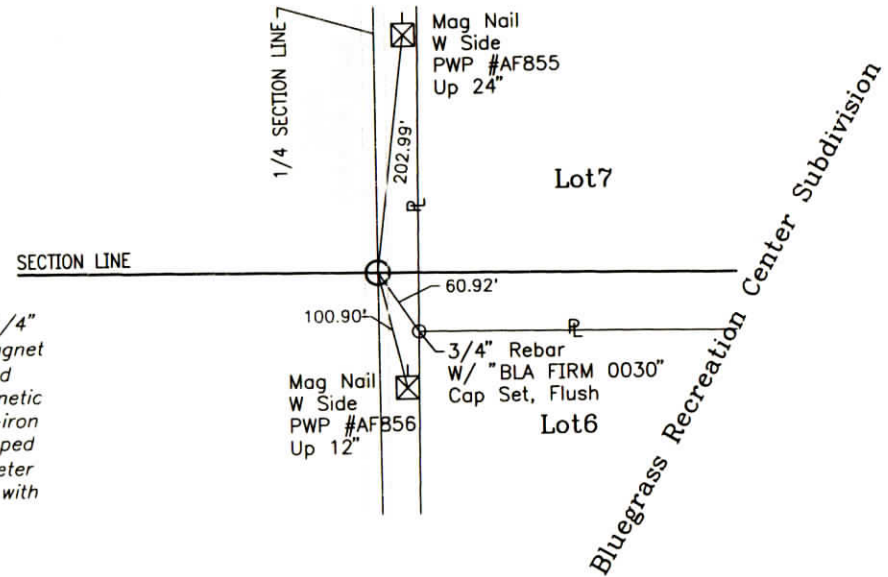


MONUMENT TYPE: ALUM. DISK IN MON. BOX
SIZE: 3-1/4" DIAM.
DEPTH/HEIGHT: DISK 4" BELOW PVMT. GRADE
REFERENCE TIE DRAWING:



Stamping
on Disk

NOTE: Disk is a 3-1/4" aluminum disk w/magnet on a 3/4" x 36" rod with detachable magnetic base, inside a cast-iron monument box stamped "SURVEY" (10" diameter rim of box is flush with asphalt pavement.)



STATE PLANE COORDINATE DATA:
INDIANA WEST ZONE, NAD 83 (1997)
U.S. SURVEY FEET

X ----

Y ----

COORDINATES ESTABLISHED BY:

APPROVED BY:

DATE:

REFERENCED BY: D.DREES/G.M.BURRESS DATE: 6/9/03

APPROVED BY: M.BARTON, RLS#20200055 DATE: 11/3/03

CORNER FILE CODE:
T5S-R9W-J-07

CORNER HISTORY:

CORNER FILE CODE:
T5S-R9W-J-07

ORIGINAL USPLS SURVEY:

COUNTY SURVEYOR'S BOOKS:

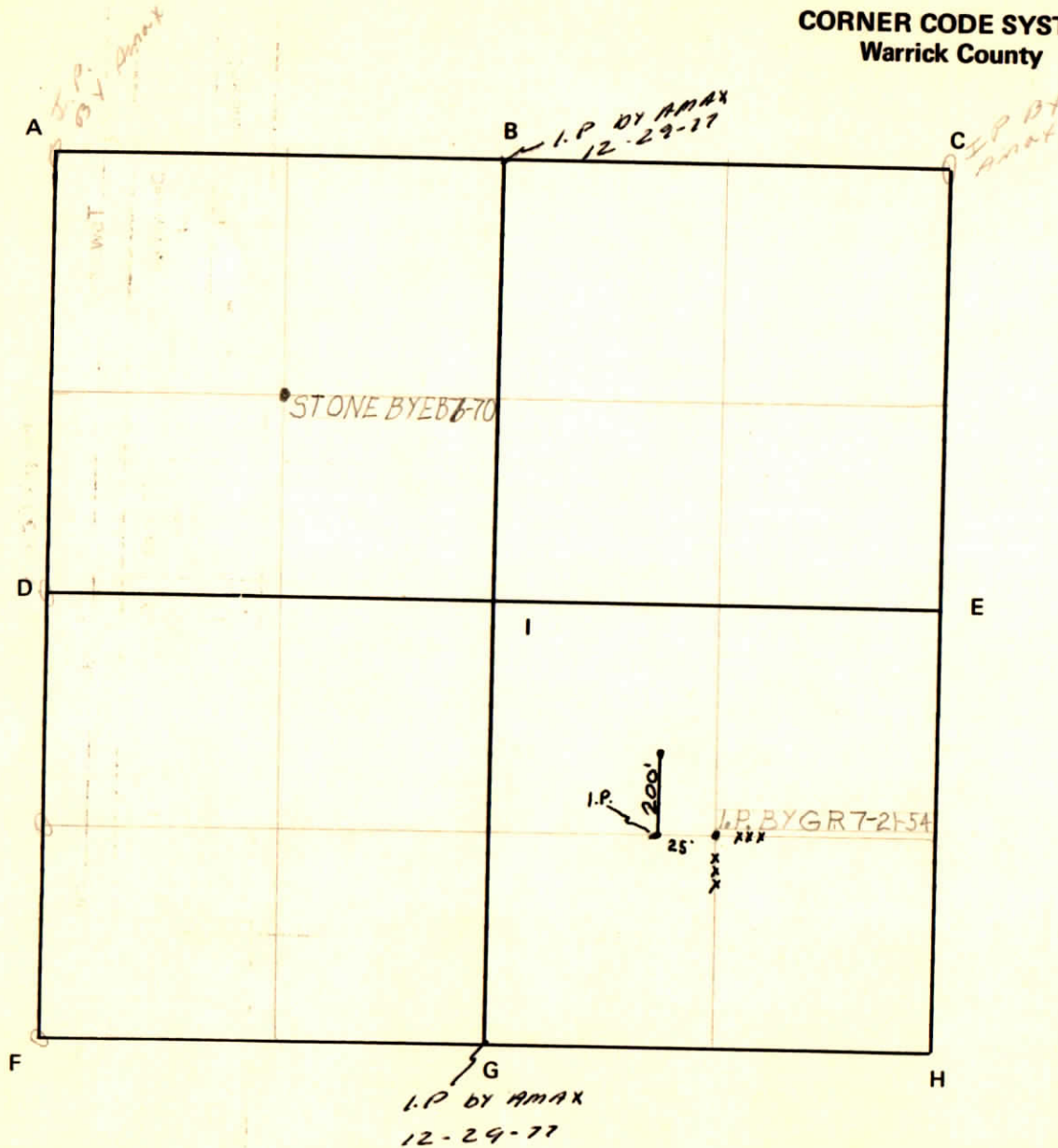
OTHER SURVEYS AND PLATS:

VERIFICATION OF CORNER POSITION: *The south quarter-corner of Section 8 was re-established at the midpoint between the southeast and southwest corners of the section. For additional information see the plat of survey recorded 7/11/03 as Document 2003R011600.*

Mark A. Barton 11/3/03

Section 9 Township 5 South Range 9 West 2nd P.M.

CORNER CODE SYSTEM
Warrick County



NOTES

RECORD OF SECTION CORNERS

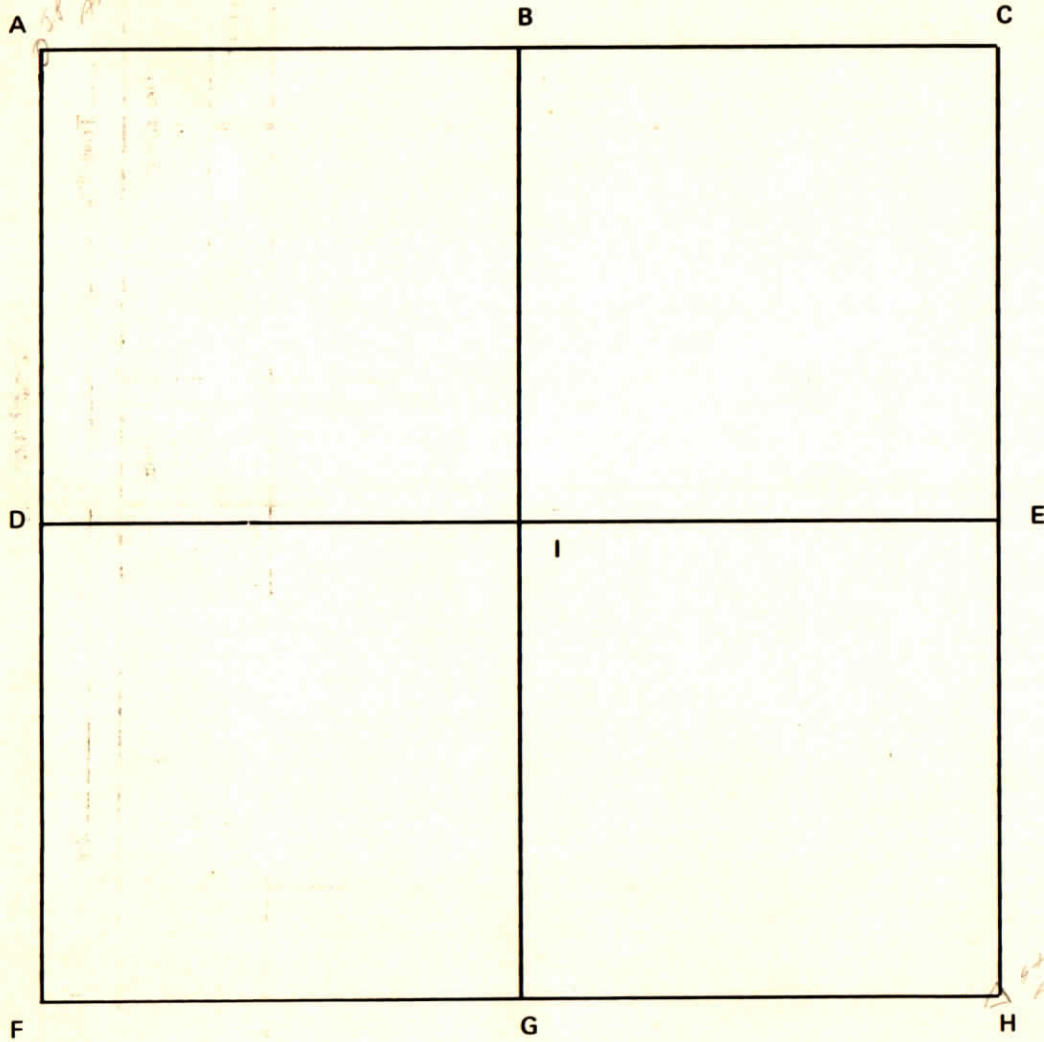
Warrick County

Section 9 Township 5 South Range 9 West 2nd Principle Meridian

Date	Cor	Description of		Distance from Corner	Azimuth from Corner (North Assumed)	Cond	Check By	Remarks
		Monument	Reference					
7/21/54	A		SE cor. NW-SE					Reynolds SWC
	B							
	C							
	D							
	E							
	F							
	G							
	H							
	I							

Section 10 Township 5 South Range 9 West 2nd P.M.

CORNER CODE SYSTEM
Warrick County



NOTES

*6-20-01
Amat*

RECORD OF SECTION CORNERS

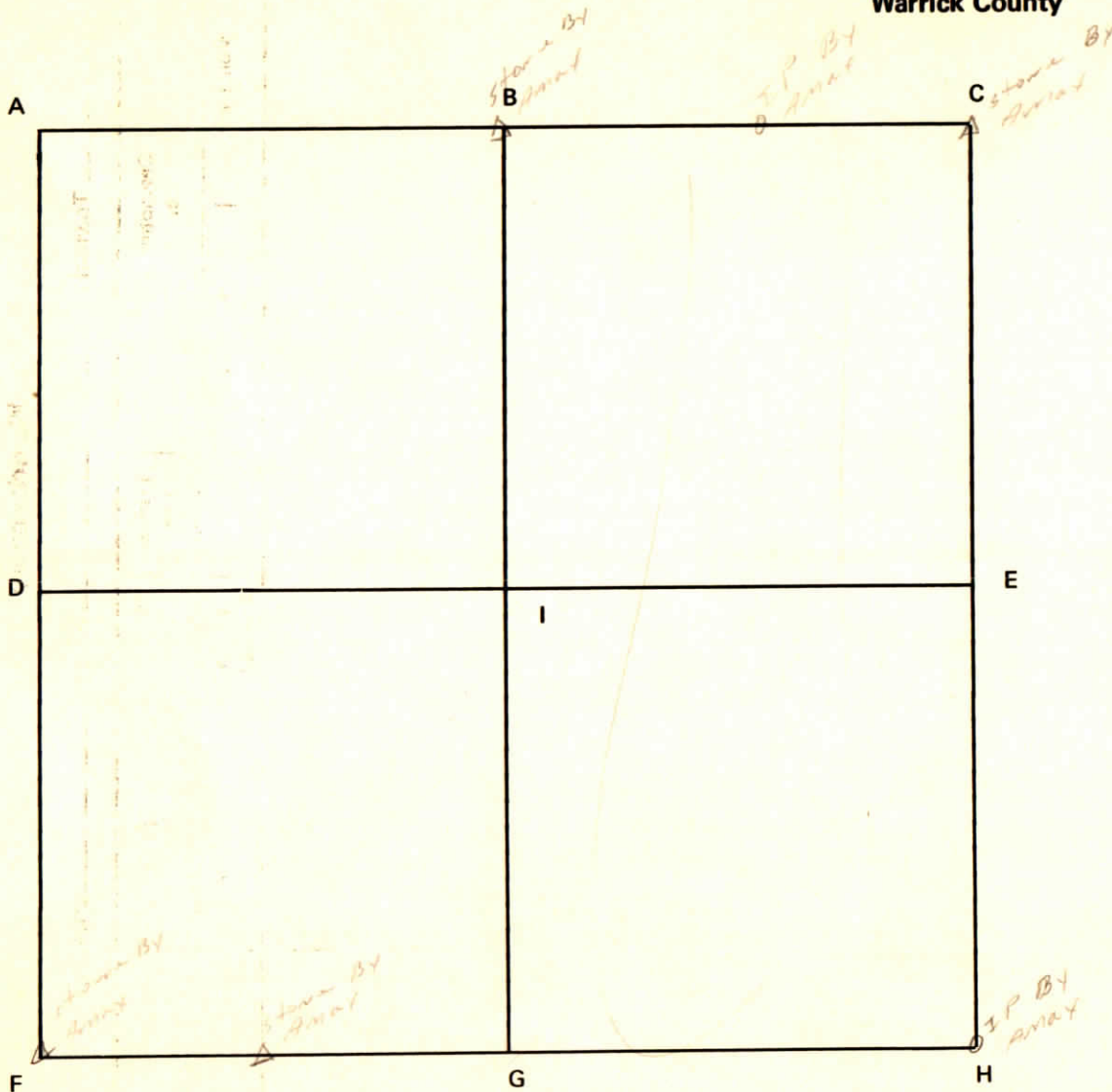
Warrick County

Section 10 Township 5 South Range 9 West 2nd Principle Meridian

Date	Cor	Description of		Distance from Corner	Azimuth from Corner (North Assumed)	Cond	Check By	Remarks
		Monument	Reference					
	A							
	B							
	C							
	D							
	E							
	F							
	G							
	H							
	I							

Section 11 Township 5 South Range 9 West 2nd P.M.

CORNER CODE SYSTEM
Warrick County



NOTES

RECORD OF SECTION CORNERS

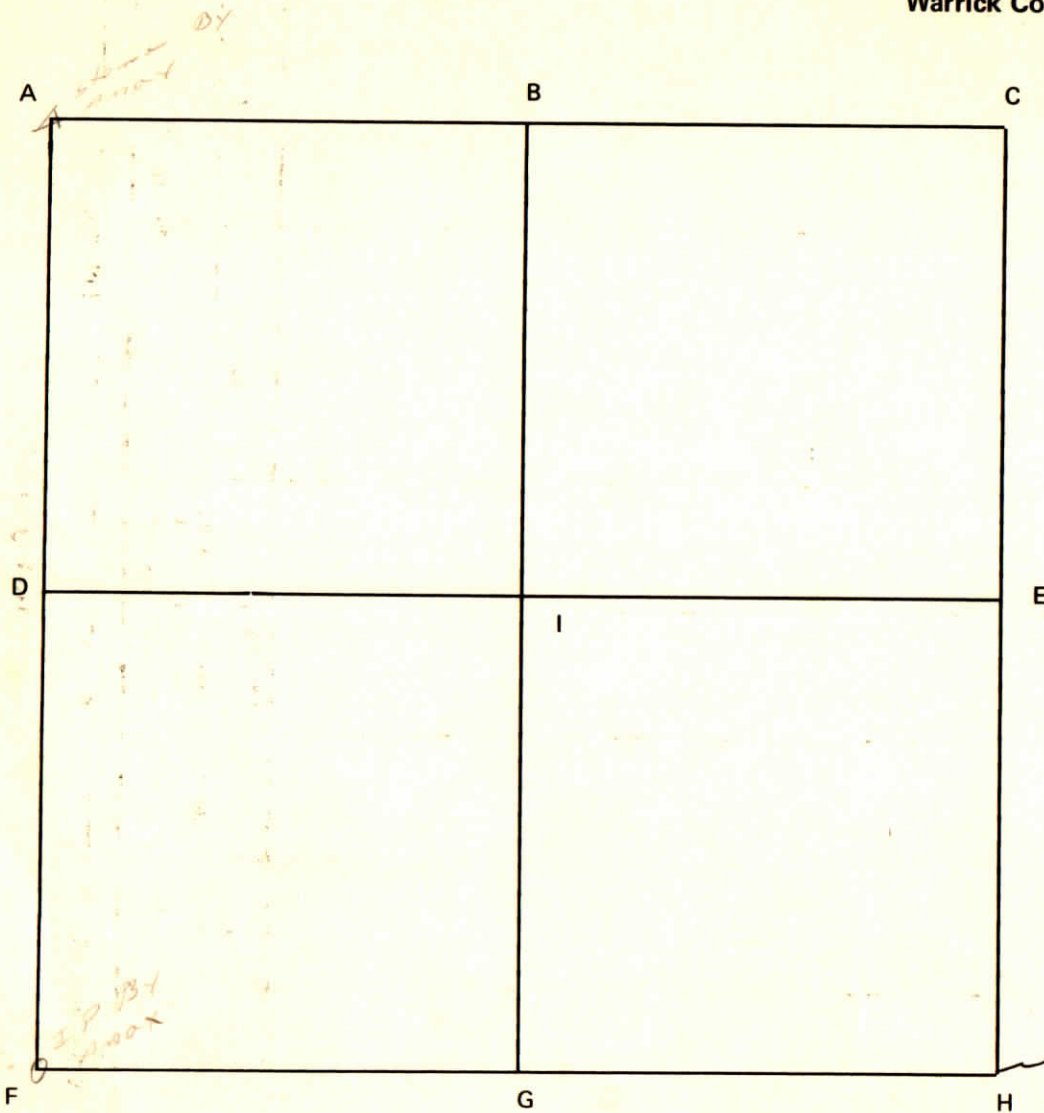
Warrick County

Section 11 Township 5 South Range 9 West 2nd Principle Meridian

Date	Cor	Description of		Distance from Corner	Azimuth from Corner (North Assumed)	Cond	Check By	Remarks
		Monument	Reference					
	A							
	B							
	C							
	D							
	E							
	F							
	G							
	H							
	I							

Section 12 Township 5 South Range 9 West 2nd P.M.

CORNER CODE SYSTEM
Warrick County



NOTES

BT. SPIKE by AMAX
1" PIPE 12-29-77

3" P. 134
AMAX

RECORD OF SECTION CORNERS

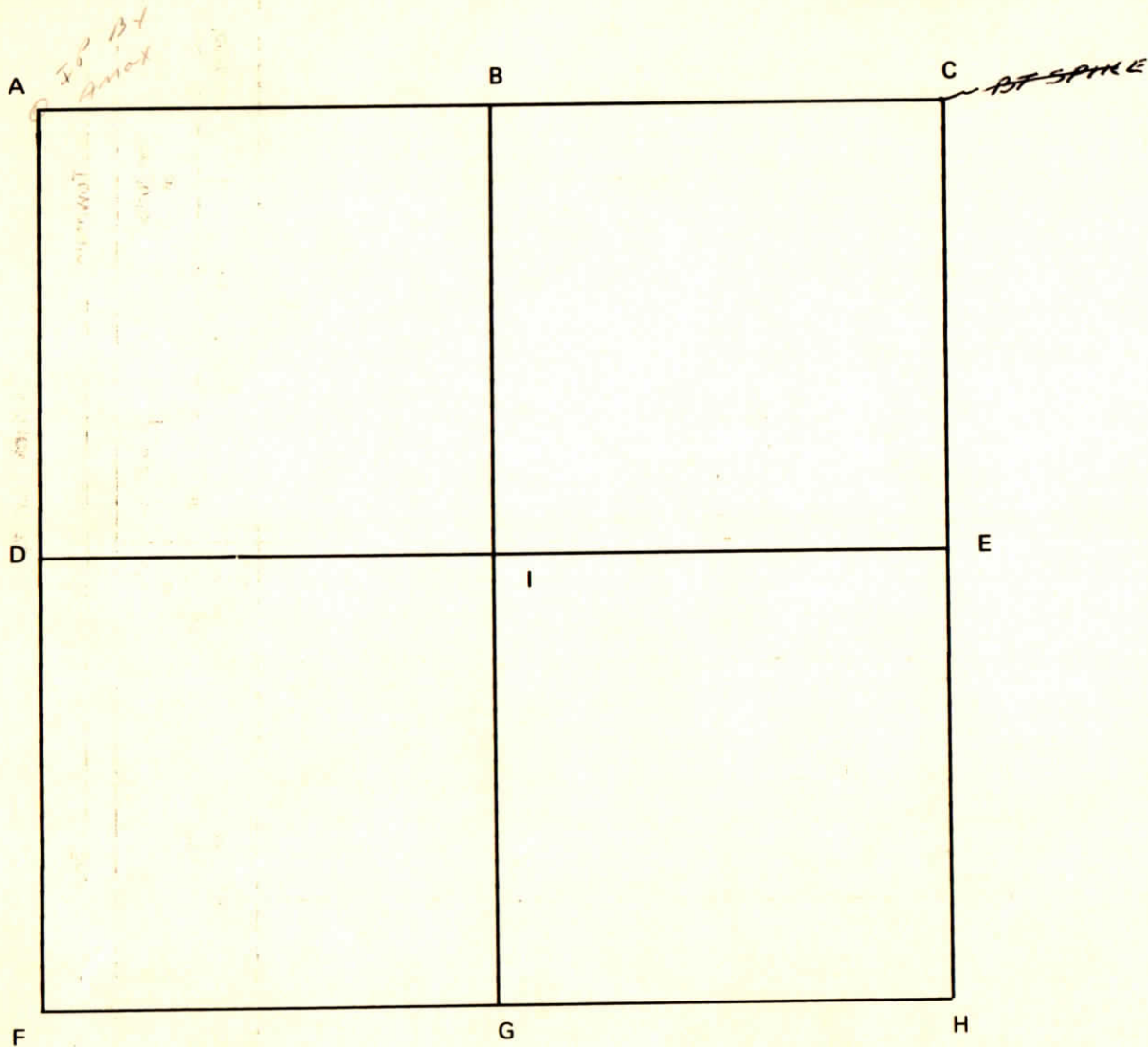
Warrick County

Section 12 Township 5 South Range 9 West 2nd Principle Meridian

Date	Cor	Description of		Distance from Corner	Azimuth from Corner (North Assumed)	Cond	Check By	Remarks
		Monument	Reference					
	A							
	B							
	C							
	D							
	E							
	F							
	G							
	H							
	I							

Section 13 Township 5 South Range 9 West 2nd P.M.

CORNER CODE SYSTEM
Warrick County



NOTES

RECORD OF SECTION CORNERS

Warrick County

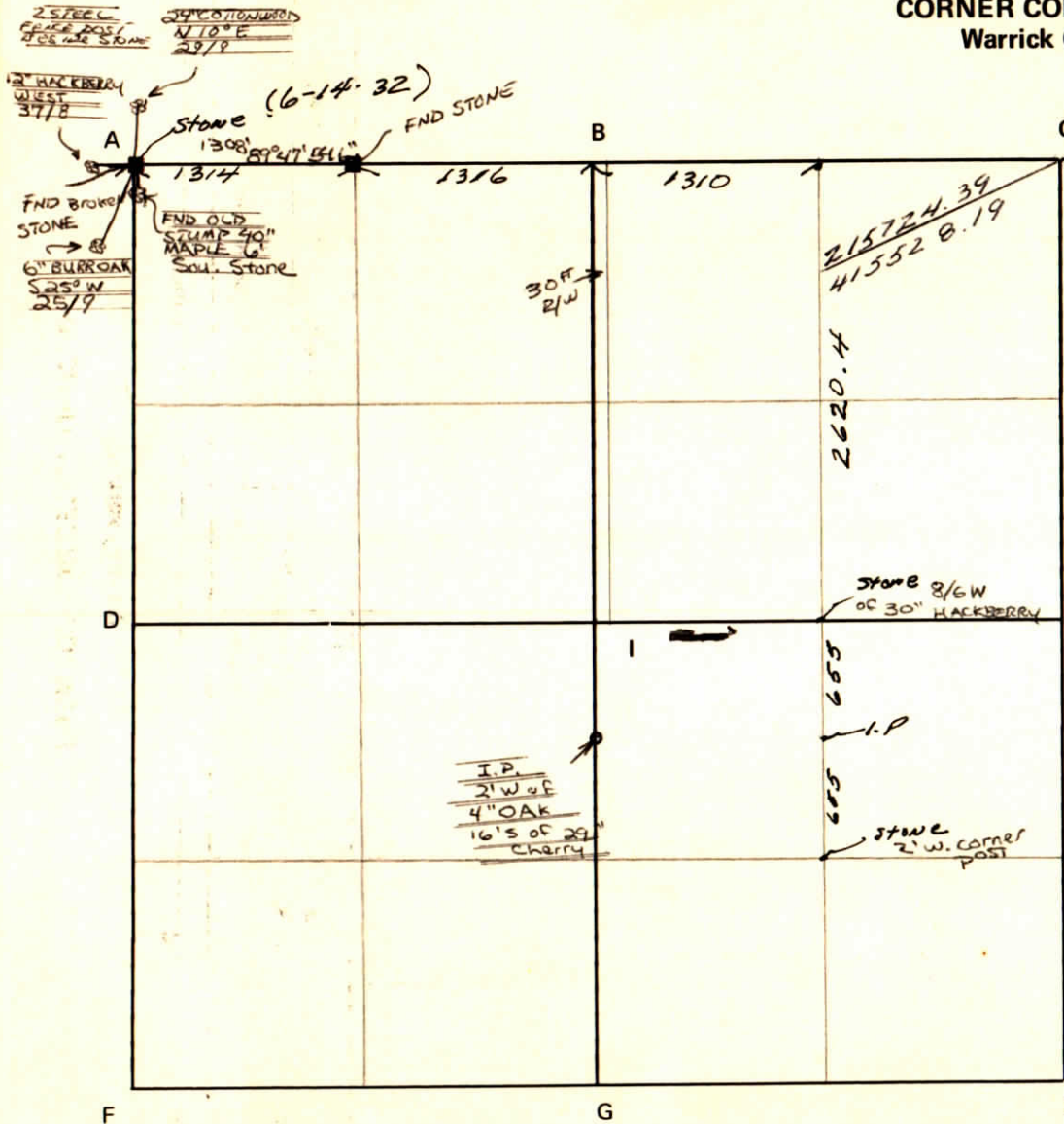
Section 13 Township 5 South Range 9 West 2nd Principle Meridian

Date	Cor	Description of		Distance from Corner	Azimuth from Corner (North Assumed)	Cond	Check By	Remarks
		Monument	Reference					
	A							
	B							
	C							
	D							
	E							
	F							
	G							
	H							
	I							

3 FT 6" LONG
"SR HEAD" D
Rebr @ PT

Section 14 Township 5 South Range 9 West 2nd P.M.

CORNER CODE SYSTEM
Warrick County



13T SPIKE BY AMAX
1" PIPE 12-29-77

NOTES

RECORD OF SECTION CORNERS

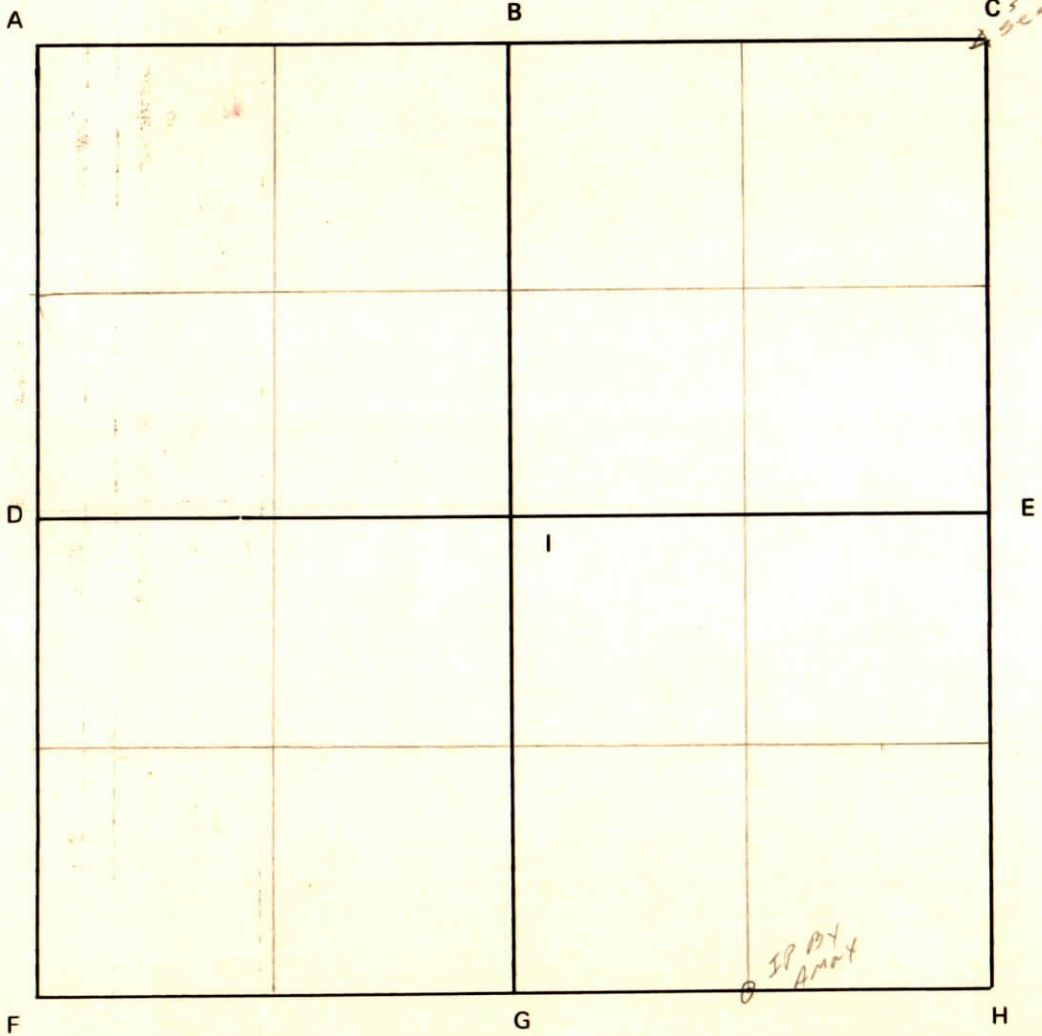
Warrick County

Section 14 Township 5 South Range 9 West 2nd Principle Meridian

Date	Cor	Description of		Distance from Corner	Azimuth from Corner (North Assumed)	Cond	Check By	Remarks
		Monument	Reference					
	A							
	B							
	C							
	D							
	E							
	F							
	G							
	H							
	I							

Section 15 Township 5 South Range 9 West 2nd P.M.

CORNER CODE SYSTEM
Warrick County



NOTES

RECORD OF SECTION CORNERS

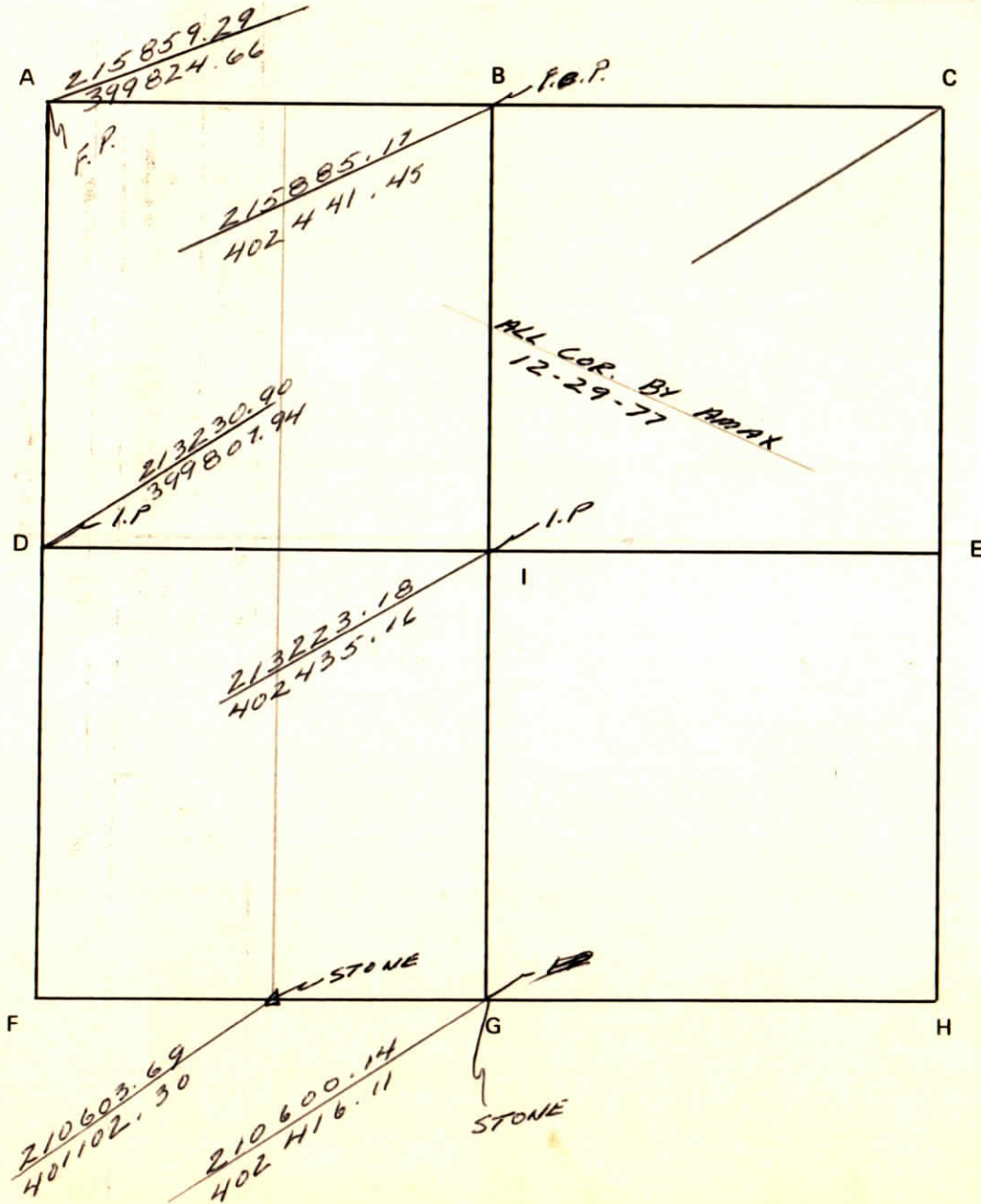
Warrick County

Section 15 Township 5 South Range 9 West 2nd Principle Meridian

Date	Cor	Description of		Distance from Corner	Azimuth from Corner (North Assumed)	Cond	Check By	Remarks
		Monument	Reference					
	A							
	B							
	C							
	D							
	E							
	F							
	G							
	H							
	I							

Section 16 Township 5 South Range 9 West 2nd P.M.

CORNER CODE SYSTEM
Warrick County



NOTES

RECORD OF SECTION CORNERS

Warrick County

Section 16 Township 5 South Range 9 West 2nd Principle Meridian

Date	Cor	Description of		Distance from Corner	Azimuth from Corner (North Assumed)	Cond	Check By	Remarks
		Monument	Reference					
	A							
	B							
	C							
	D							
	E							
	F							
	G							
	H							
	I							

Waters Edge Sub

CORNER RECORD
WARRICK COUNTY



DESCRIPTION:

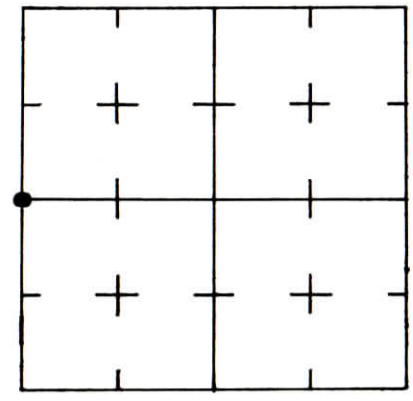
NW CORNER Sw 1/4

SECTION 16, T. 5 S. R. 9 W.

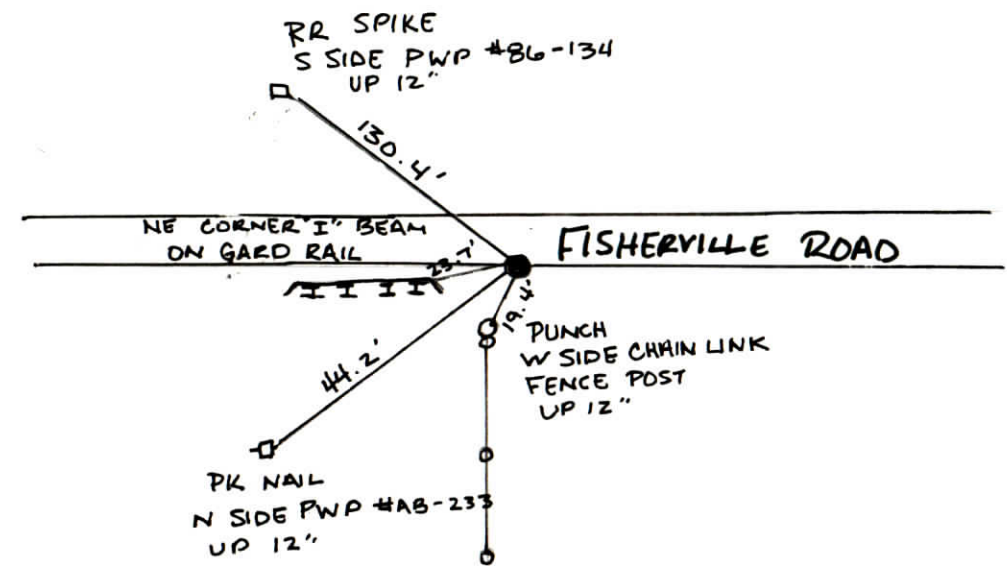
2nd PRINCIPLE MERIDIAN

WARRICK COUNTY SURVEYOR
KARAN HARGRAVE-BARNHILL

INDICATE CORNER REFERENCED



DESCRIBE CORNER REFERENCED



STATE PLANE COORDINATE DATA

INDIANA ZONE: WEST

X _____

Y _____

ESTABLISHED BY:

APPROVED BY

DATE

REFERENCED BY:

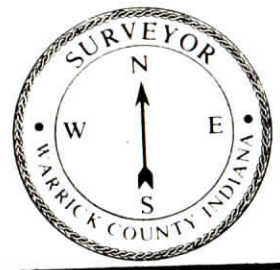
DATE

MATTHEW WANNEMUEHLER

9-16-2002

WATERS EDGE SURV

CORNER RECORD WARRICK COUNTY



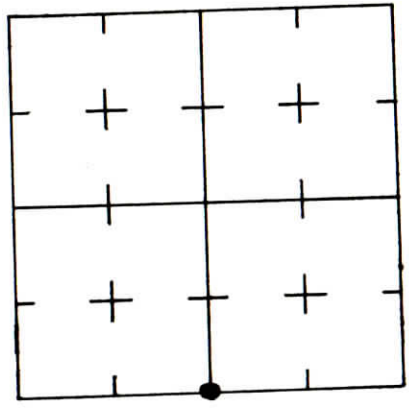
DESCRIPTION:

SE CORNER SW 1/4
SECTION 16, T. 5 S.
2nd PRINCIPLE MERIDIAN

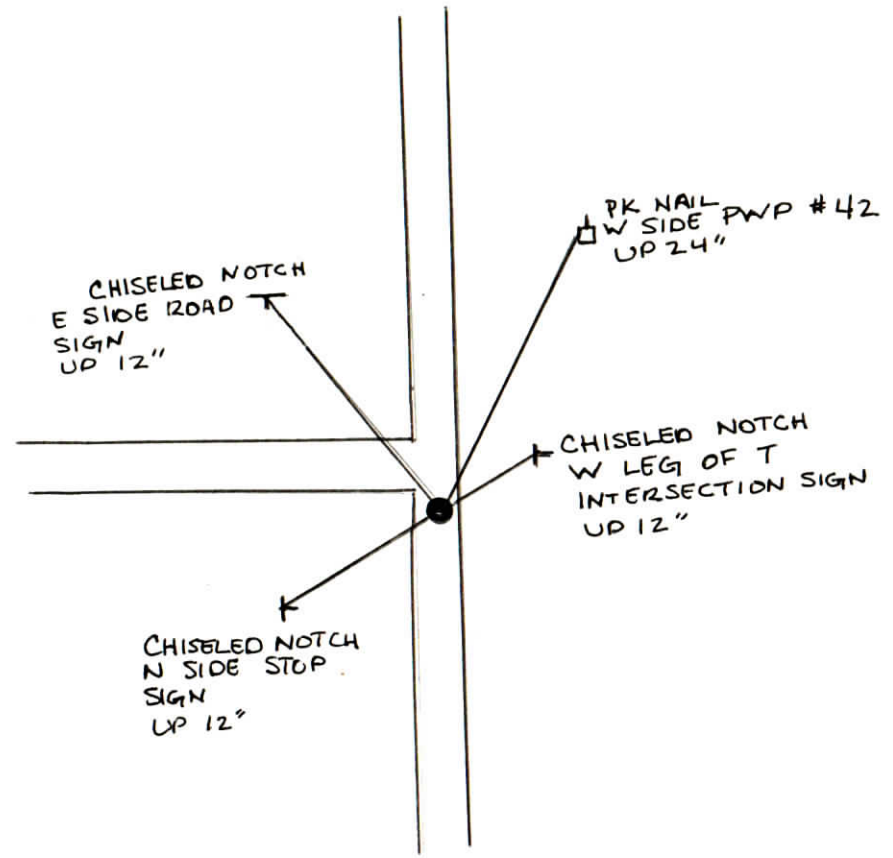
R. 9 W.

WARRICK COUNTY SURVEYOR
KARAN HARGRAVE-BARNHILL

INDICATE CORNER REFERENCED



DESCRIBE CORNER REFERENCED



STATE PLANE COORDINATE DATA

INDIANA ZONE: WEST

X _____

Y _____

ESTABLISHED BY:

APPROVED BY

DATE

REFERENCED BY:

MATTHEW WANNEMUEHLER

DATE

9-16-02

Waters Edge Sub
**CORNER RECORD
 WARRICK COUNTY**

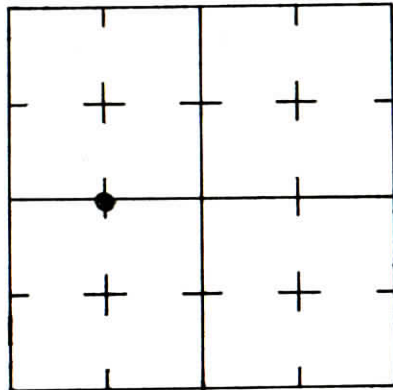


DESCRIPTION :

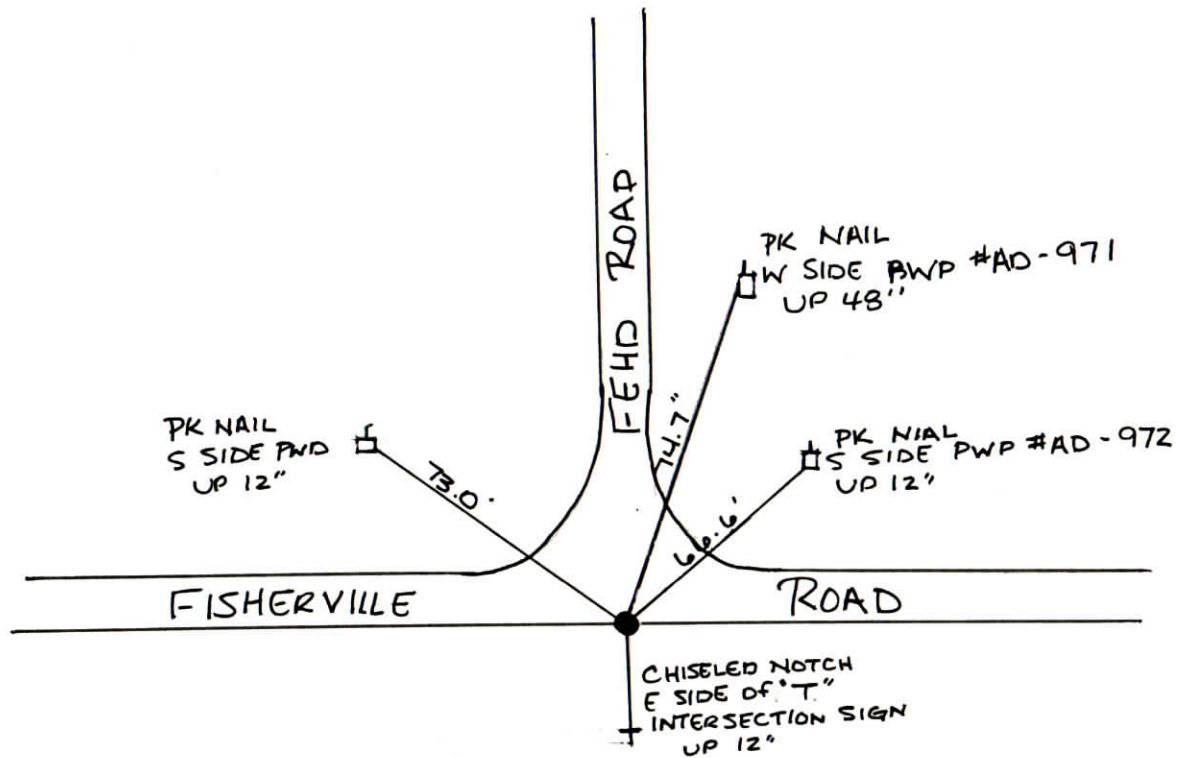
SW CORNER E 1/2 NW 1/4
 SECTION 16, T. 5 S. R. 9 W.
 2nd PRINCIPLE MERIDIAN

**WARRICK COUNTY SURVEYOR
 KARAN HARGRAVE-BARNHILL**

INDICATE CORNER REFERENCED



DESCRIBE CORNER REFERENCED



STATE PLANE COORDINATE DATA

INDIANA ZONE: WEST

X _____

Y _____

ESTABLISHED BY:

APPROVED BY

DATE

REFERENCED BY:

DATE

MATTHEW WANNEMUEHLER

9-16-2002

WATERS EDGE SURV

CORNER RECORD
WARRICK COUNTY

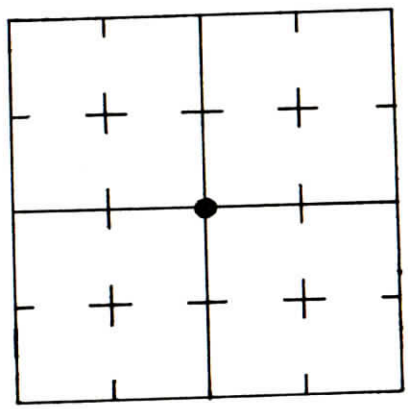


DESCRIPTION:
NE CORNER SW 1/4
SECTION 16, T. 5 S.
2nd PRINCIPLE MERIDIAN

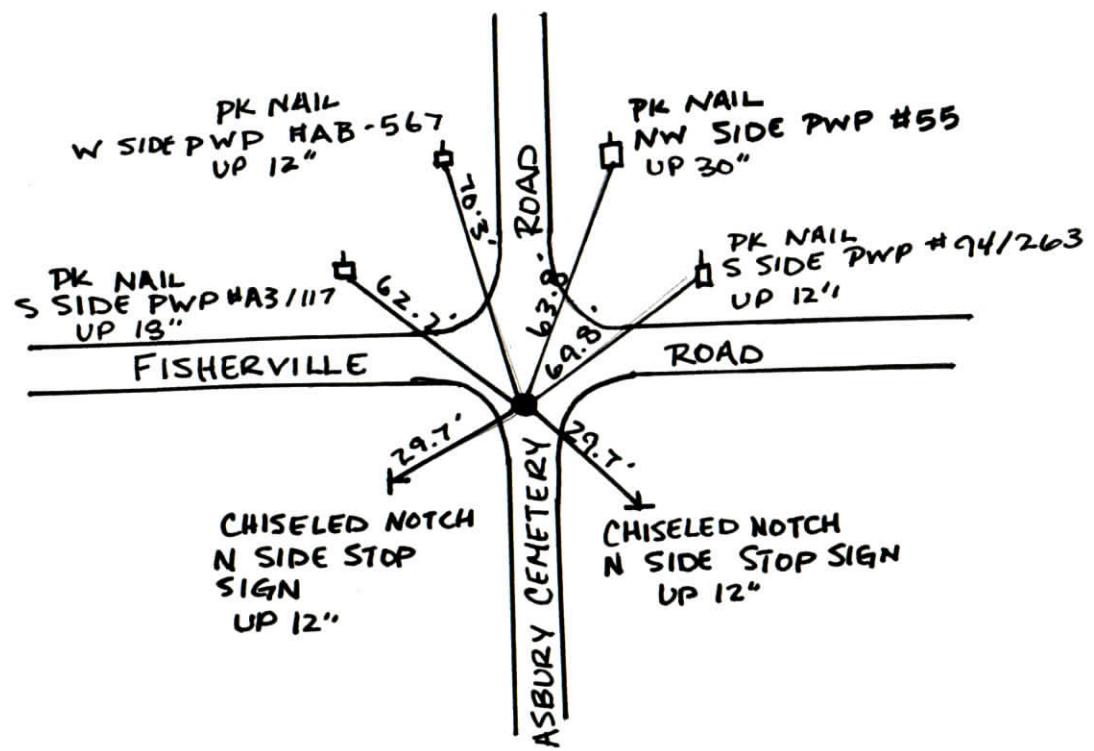
R. 9 W.

WARRICK COUNTY SURVEYOR
KARAN HARGRAVE-BARNHILL

INDICATE CORNER REFERENCED



DESCRIBE CORNER REFERENCED



STATE PLANE COORDINATE DATA

INDIANA ZONE: WEST

X _____

Y _____

ESTABLISHED BY:

APPROVED BY

DATE

REFERENCED BY:

DATE

MATTHEW WANNEMUEHLER

9-16-2002

CORNER RECORD
WARRICK COUNTY

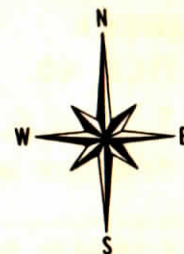
DESCRIPTION: CENTER OF SEC.

CORNER

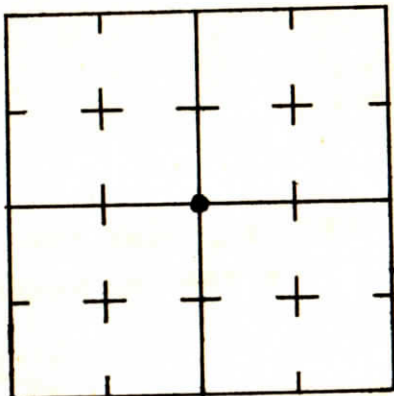
SECTION 16, T. 5 S. R. 9 W.

2nd PRINCIPAL MERIDIAN

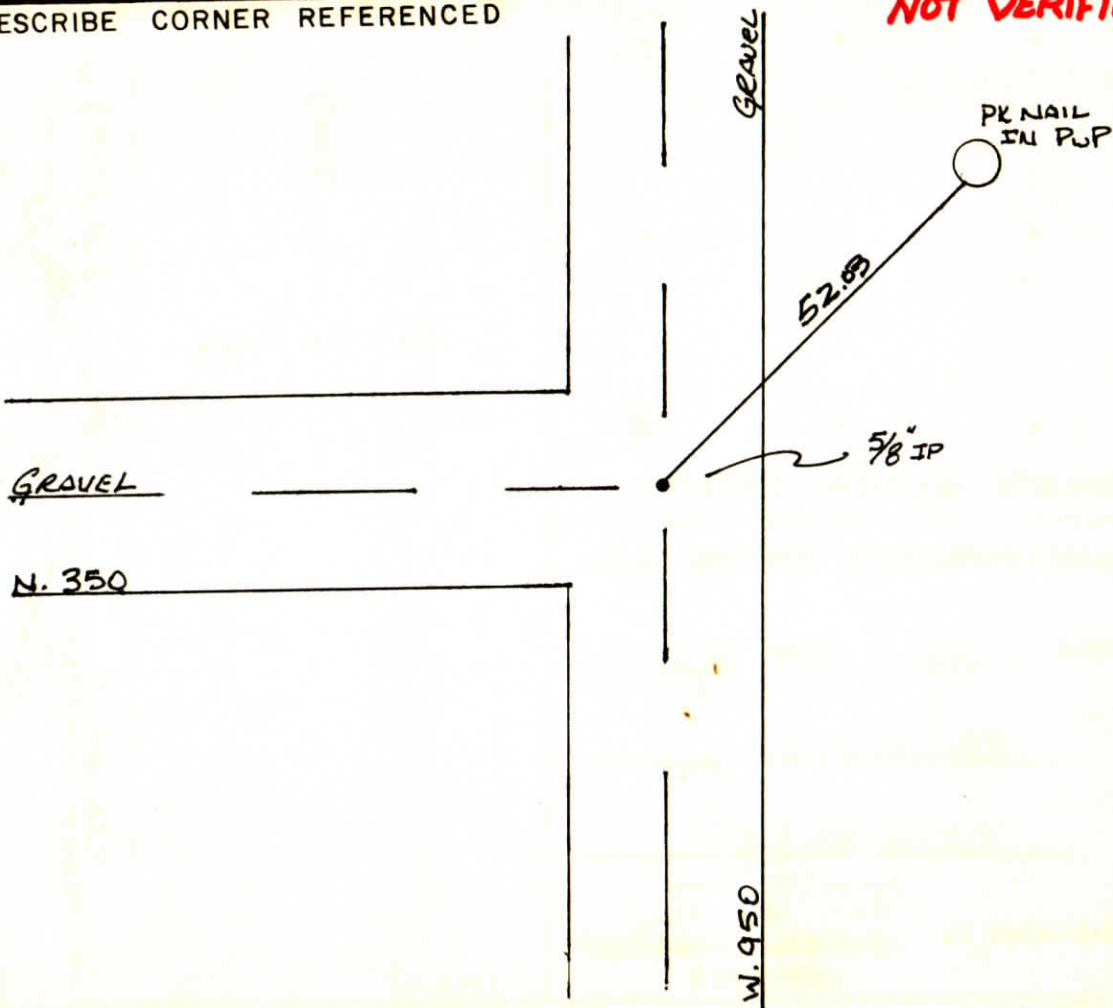
WARRICK COUNTY SURVEYOR
MICHAEL F. FELDBUSCH, L.S.



INDICATE CORNER REFERENCED



DESCRIBE CORNER REFERENCED



NOT VERIFIED

STATE PLANE COORDINATE DATA

INDIANA ZONE: WEST

X _____

Y _____

ESTABLISHED BY:

APPROVED BY

SET: By AMAX

DATE

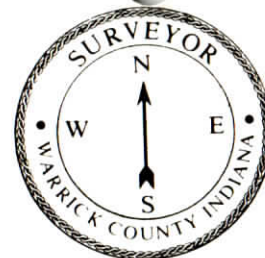
REFERENCED BY:

Loy Beck

DATE

4-27-84

CORNER RECORD
WARRICK COUNTY



DESCRIPTION :

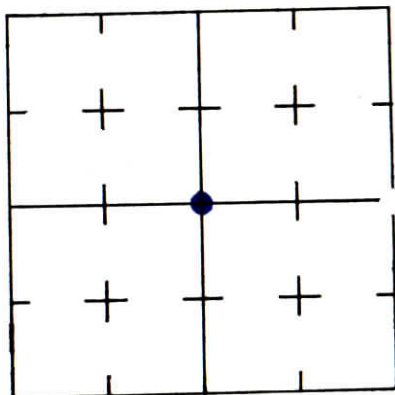
SE CORNER NW/4

SECTION 16, T. S S. R. 9 W.

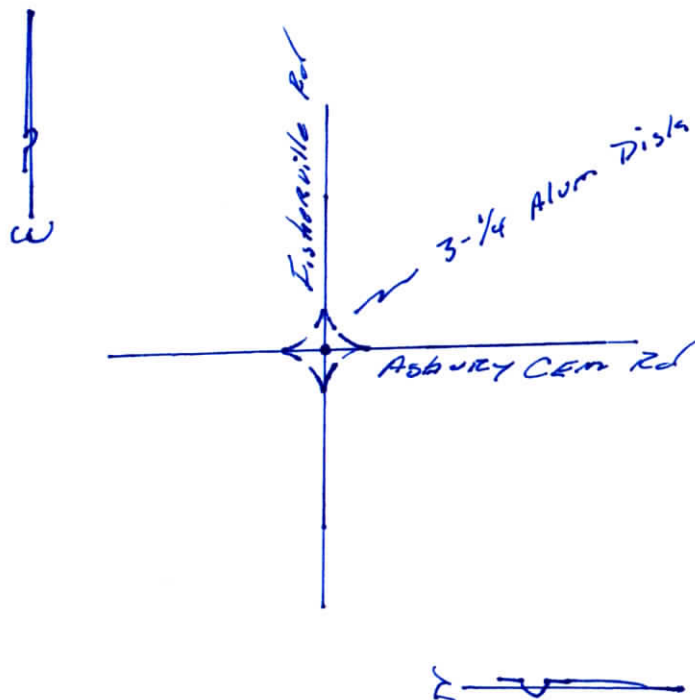
2nd PRINCIPLE MERIDIAN

WARRICK COUNTY SURVEYOR
KARAN HARGRAVE-BARNHILL

INDICATE CORNER REFERENCED



DESCRIBE CORNER REFERENCED



STATE PLANE COORDINATE DATA

INDIANA ZONE: WEST

X _____

Y _____

ESTABLISHED BY:

APPROVED BY

DATE

REFERENCED BY:

SUZUBYER
MATHEW E. Wannomuchlor

DATE

1-31-00

CORNER RECORD
WARRICK COUNTY



DESCRIPTION :

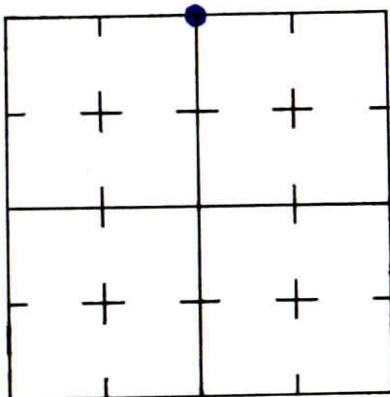
NE CORNER 4th 1/4

SECTION 16, T. 5 S. R. 9 W.

2nd PRINCIPLE MERIDIAN

WARRICK COUNTY SURVEYOR
KARAN HARGRAVE-BARNHILL

INDICATE CORNER REFERENCED



DESCRIBE CORNER REFERENCED



Asbury Heights
Sub.



Asbury Cem. Rd.

3-1/4" Alum Disk
NW Cor of Lot 15
NE

STATE PLANE COORDINATE DATA

INDIANA ZONE: WEST

X _____

Y _____

ESTABLISHED BY:

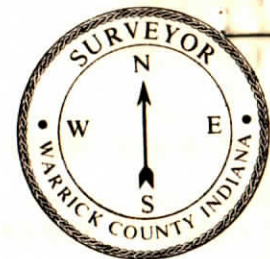
APPROVED BY

DATE

REFERENCED BY:

DATE

CORNER RECORD
WARRICK COUNTY



DESCRIPTION: Center of 16

_____ CORNER _____

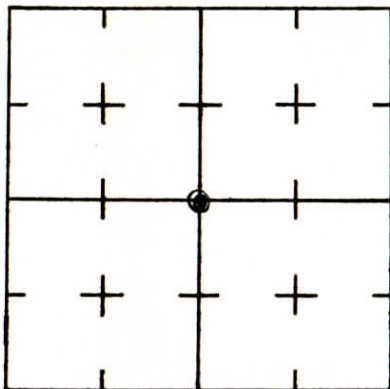
SECTION 16, T. 5 S. R. 4 W.

2nd PRINCIPLE MERIDIAN

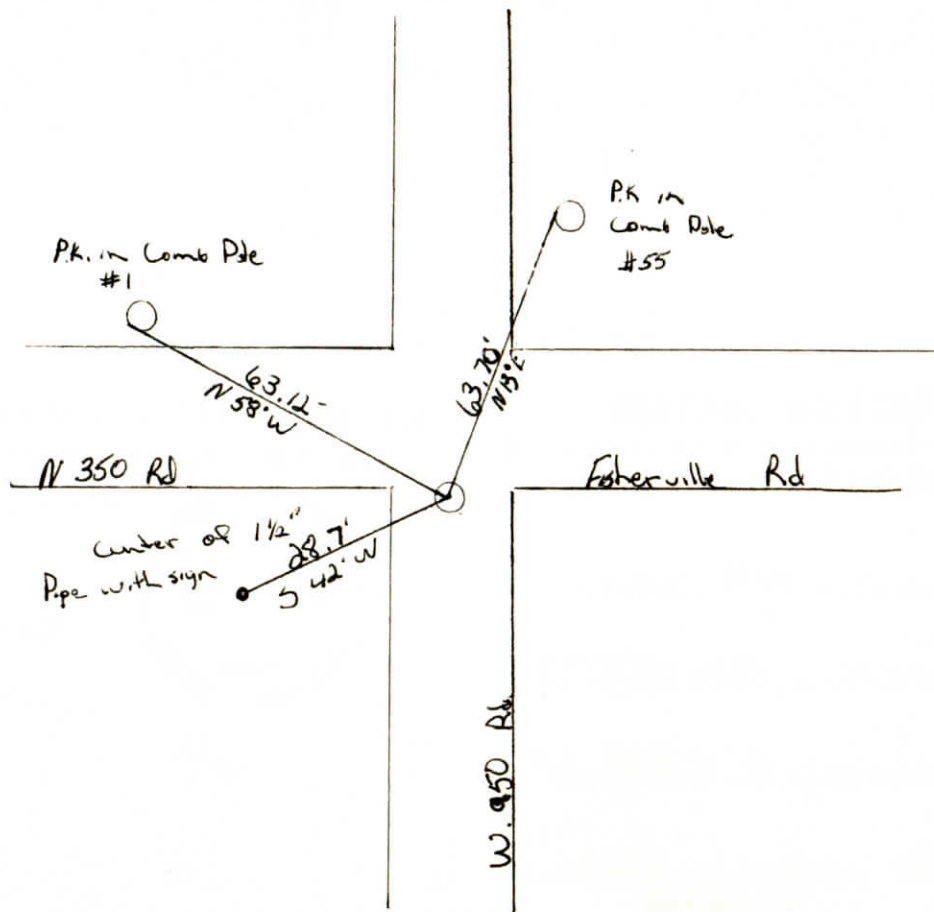
WARRICK COUNTY SURVEYOR

MICHAEL IRVIN

INDICATE CORNER REFERENCED



DESCRIBE CORNER REFERENCED



STATE PLANE COORDINATE DATA

INDIANA ZONE: WEST

X _____

Y _____

ESTABLISHED BY:

APPROVED BY

Set By Amax

DATE

REFERENCED BY:

DATE

6-26-86

CORNER RECORD

INDEX

FILE NO. L-11

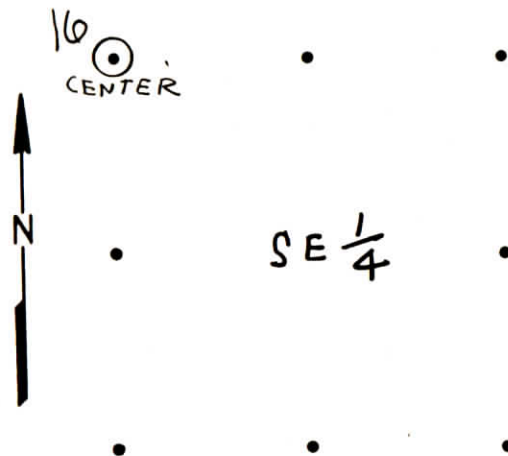
T 5S R 9W

Principal Meridian _____

COUNTY WARRICK

STATE INDIANA

CORNER DIAGRAM (160 AC.)



INDICATE SECTION CENTERS

PLANE COORDINATE POSITION DATA

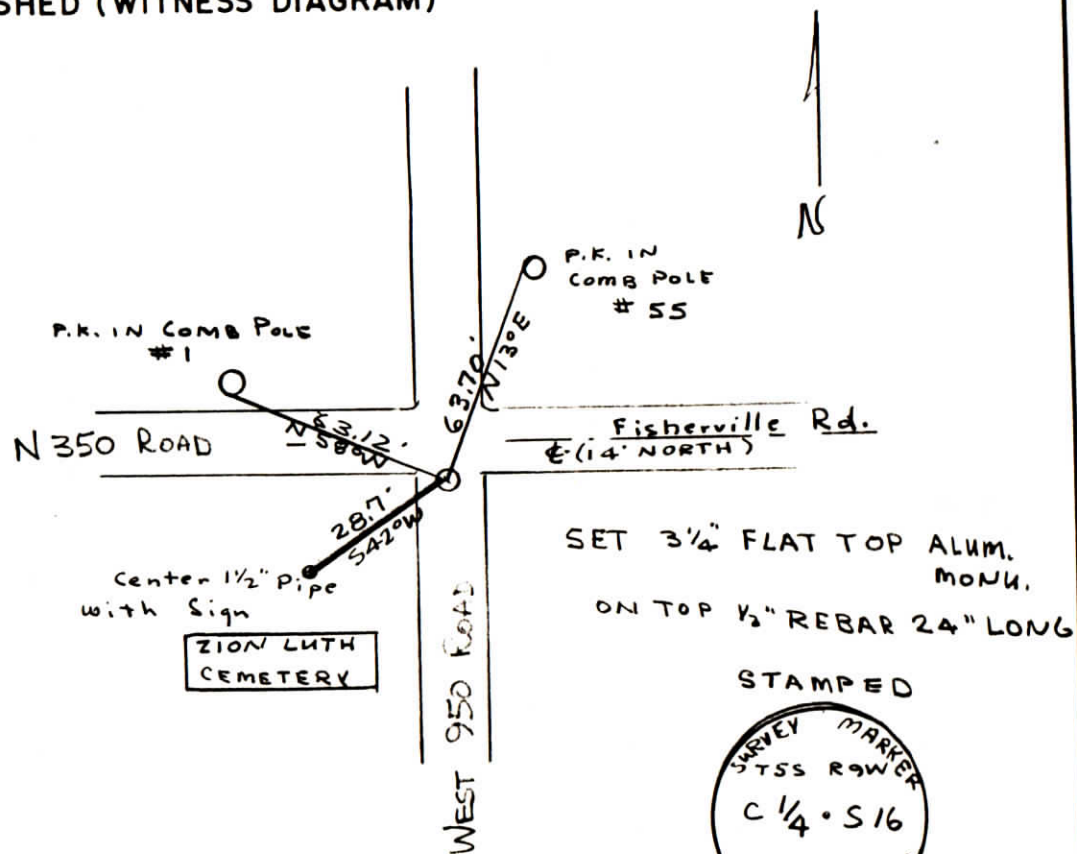
STATE IND ZONE WEST

X 402434.39

Y 213223.10

Established by DON WESTFALL
JEFF KANDOVER
ROGER FULKERSON
SURVEYOR

DESCRIBE CORNER MONUMENT FOUND OR ESTABLISHED (WITNESS DIAGRAM)



SET 3/4" FLAT TOP ALUM. MONU.
ON TOP 1/2" REBAR 24" LONG

STAMPED



APPROVED BY

Alvin J Paul

TITLE

LS# 50415 SURVEY CHIEF (MAX)

DATE

6-26-86

CORNER RECORD
WARRICK COUNTY



DESCRIPTION:

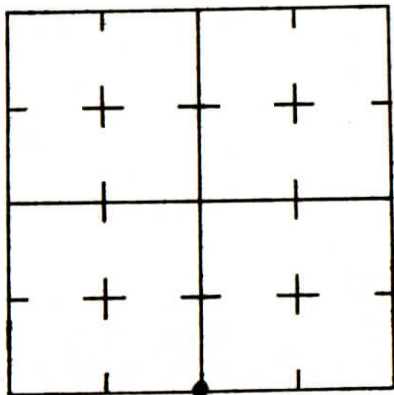
SW CORNER SE

SECTION 16, T. 5 S. R. 9 W.

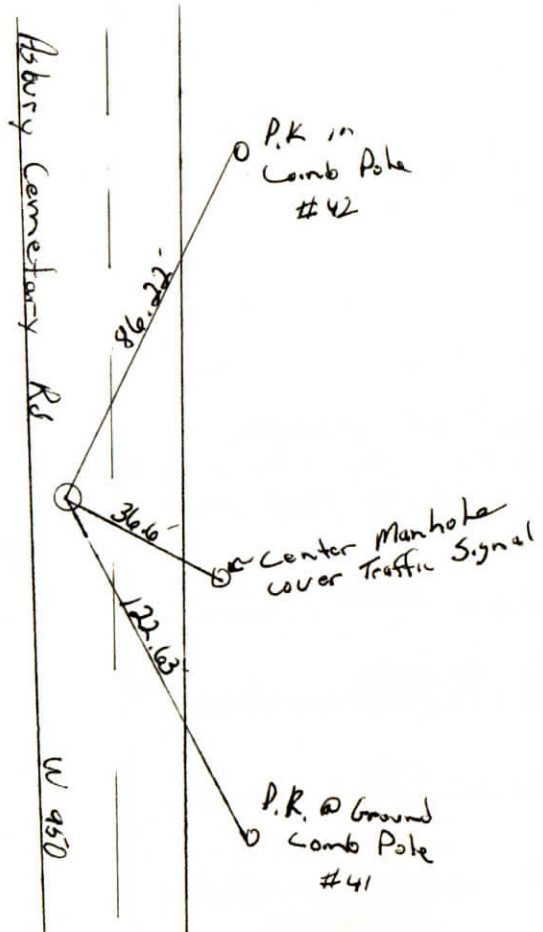
2nd PRINCIPLE MERIDIAN

WARRICK COUNTY SURVEYOR
MICHAEL IRVIN

INDICATE CORNER REFERENCED



DESCRIBE CORNER REFERENCED



STATE PLANE COORDINATE DATA

INDIANA ZONE: WEST

X _____

Y _____

ESTABLISHED BY:

APPROVED BY

Set by Amax

DATE

REFERENCED BY:

DATE

6-26-86

CORNER RECORD

INDEX

FILE NO. N 11

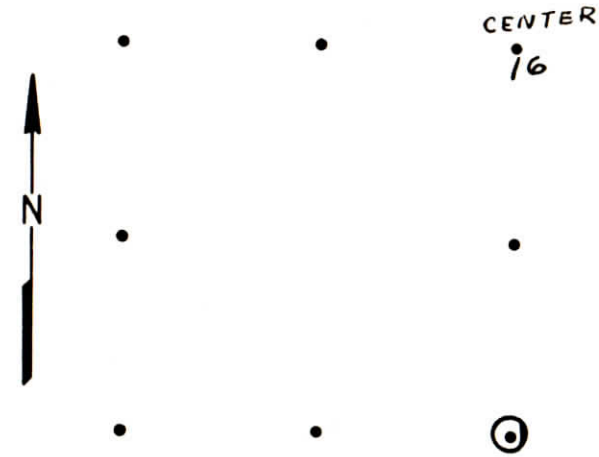
T 55 R 9W

Principal Meridian 2ND

COUNTY WARRICK

STATE INDIANA

CORNER DIAGRAM (160 AC.)



INDICATE SECTION CENTERS

PLANE COORDINATE POSITION DATA

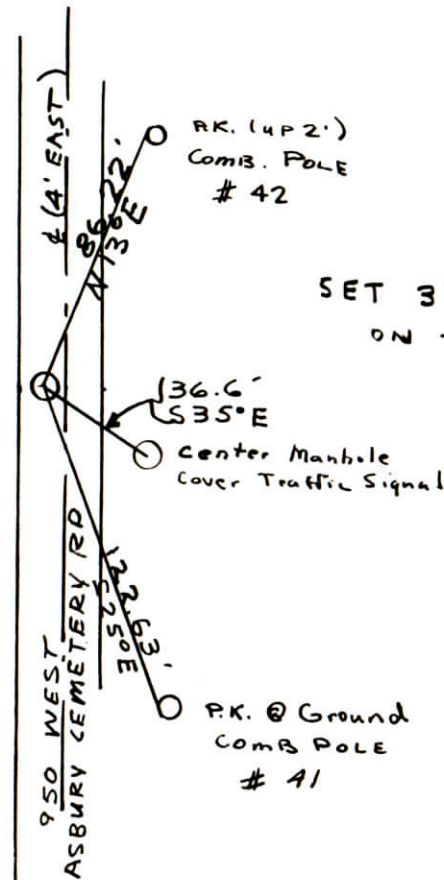
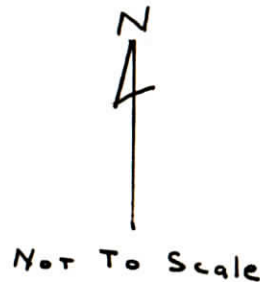
STATE IND ZONE WEST

X 402416.34

Y 210600.06

Established by ALVIN L. PAUL
DON WESTFALL
ROGER FULKERSON
SURVEYOR

DESCRIBE CORNER MONUMENT FOUND OR ESTABLISHED (WITNESS DIAGRAM)



SET 3/4" FLAT TOP ALUM. MONU.
ON TOP 1/2" REBAR 24" LONG



IRON

APPROVED BY

Alvin L. Paul

TITLE

LS# S0415 SURVEY CHIEF (MAX)

DATE

6-26-86

CORNER RECORD
WARRICK COUNTY



DESCRIPTION:

NW CORNER NW NE

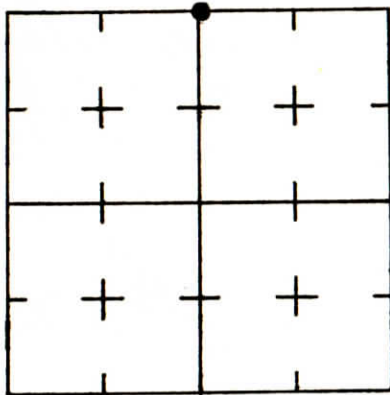
SECTION 16, T. 5 S. R. 9 W.

2nd PRINCIPLE MERIDIAN

WARRICK COUNTY SURVEYOR

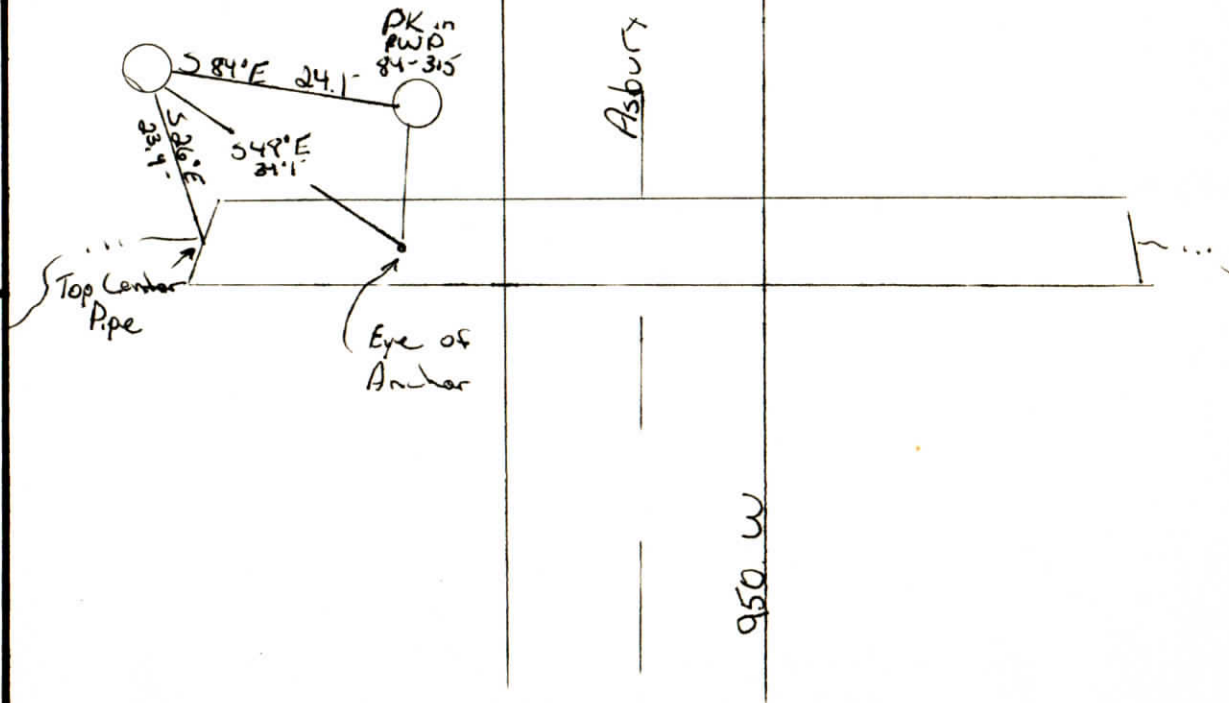
MICHAEL IRVIN

INDICATE CORNER REFERENCED



DESCRIBE CORNER REFERENCED

Set $3\frac{1}{4}^{\circ}$ Flat Top Alum. Mon. on Top $\frac{1}{2}$ Rebar 24" Long stamped



STATE PLANE COORDINATE DATA

INDIANA ZONE: WEST

X _____

Y _____

ESTABLISHED BY:

APPROVED BY Alvin L Paul
Set by Amax

DATE 6-26-86 REFERENCED BY:

DATE

CORNER RECORD

INDEX

FILE NO. J-11

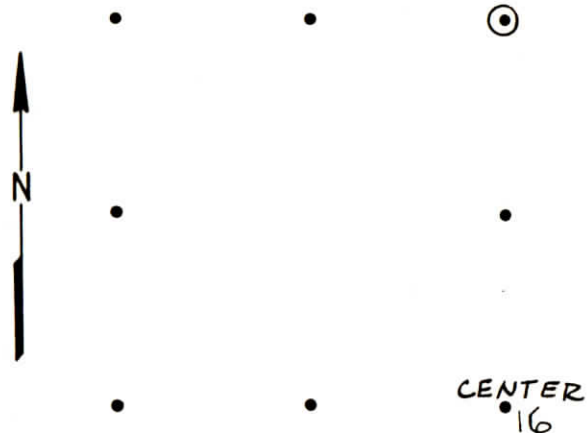
T 5-S R 9-W

Principal Meridian 2ND

COUNTY WARRICK

STATE INDIANA

CORNER DIAGRAM (160 AC.)



INDICATE SECTION CENTERS

PLANE COORDINATE POSITION DATA

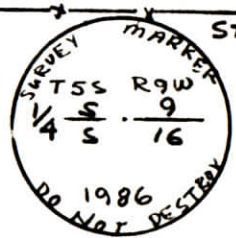
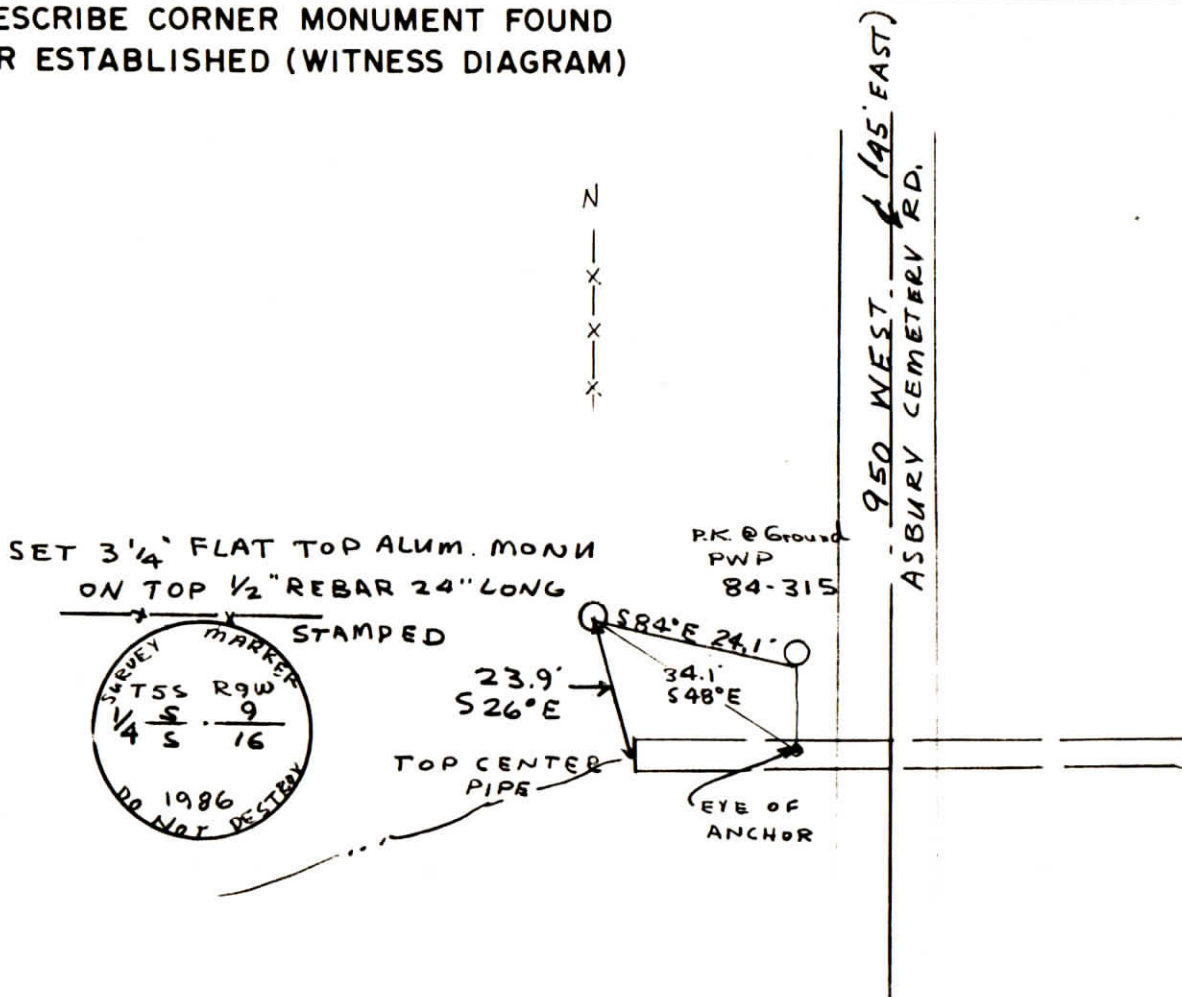
STATE IND ZONE WEST

X 402441.46 402450.04

Y 215885.22 215848.54

Established by ALVIN L. PAUL
DON WESTFALL
HARVEY MOORE
SURVEYOR

DESCRIBE CORNER MONUMENT FOUND OR ESTABLISHED (WITNESS DIAGRAM)



APPROVED BY

Alvin L. Paul

TITLE

LS# 50415 SURVEY CHIEF (AMAX)

DATE

6-26-86

CORNER RECORD
WARRICK COUNTY



DESCRIPTION :

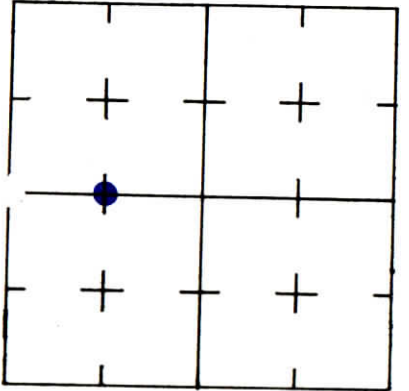
SW CORNER E 1/2 NW 1/4

SECTION 16, T. 5 S. R. 9 W.

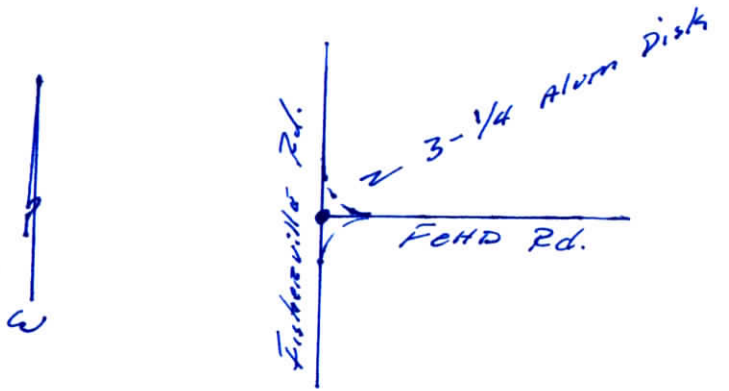
2nd PRINCIPLE MERIDIAN

WARRICK COUNTY SURVEYOR
KARAN HARGRAVE-BARNHILL

INDICATE CORNER REFERENCED



DESCRIBE CORNER REFERENCED



STATE PLANE COORDINATE DATA

INDIANA ZONE: WEST

X _____

Y _____

ESTABLISHED BY:

APPROVED BY

DATE

REFERENCED BY:

Surveyed
MATHEW E. WARRICKMUEHLER

DATE

1-31-00