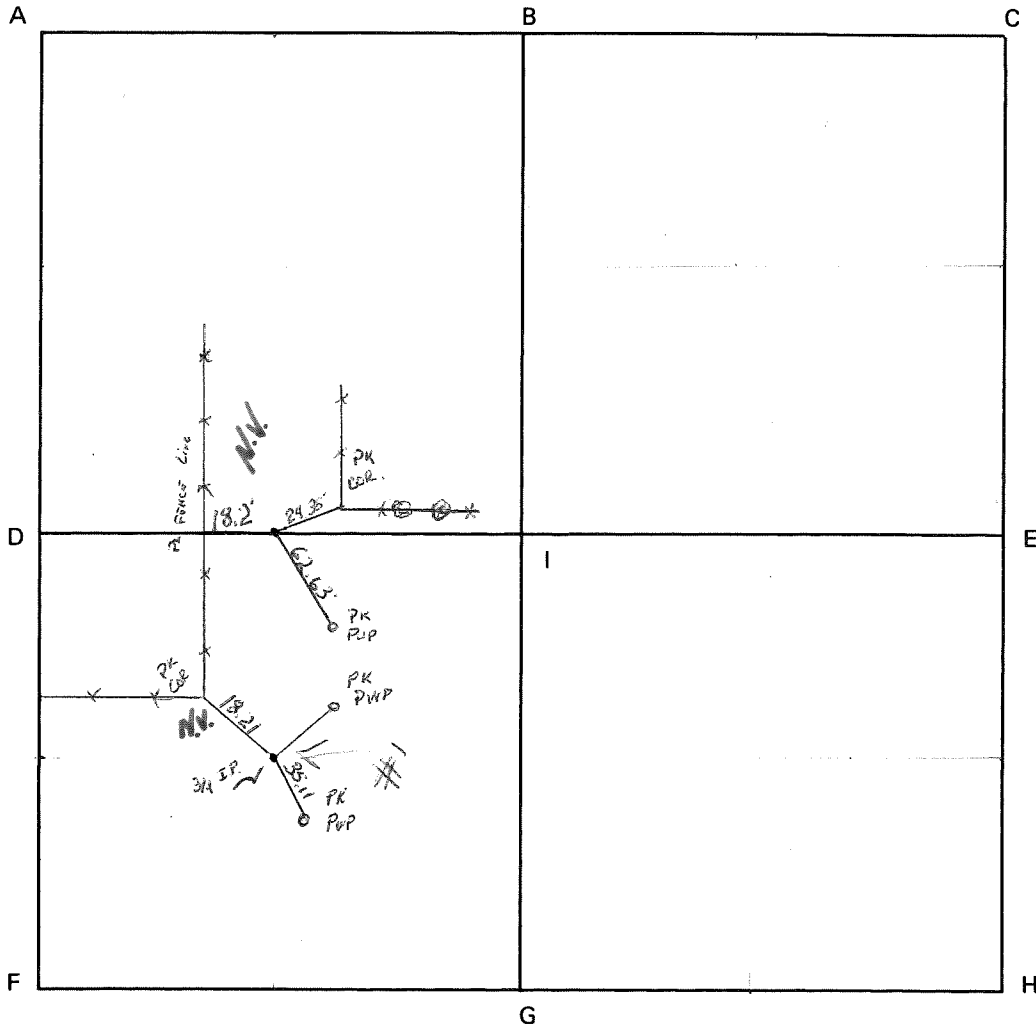


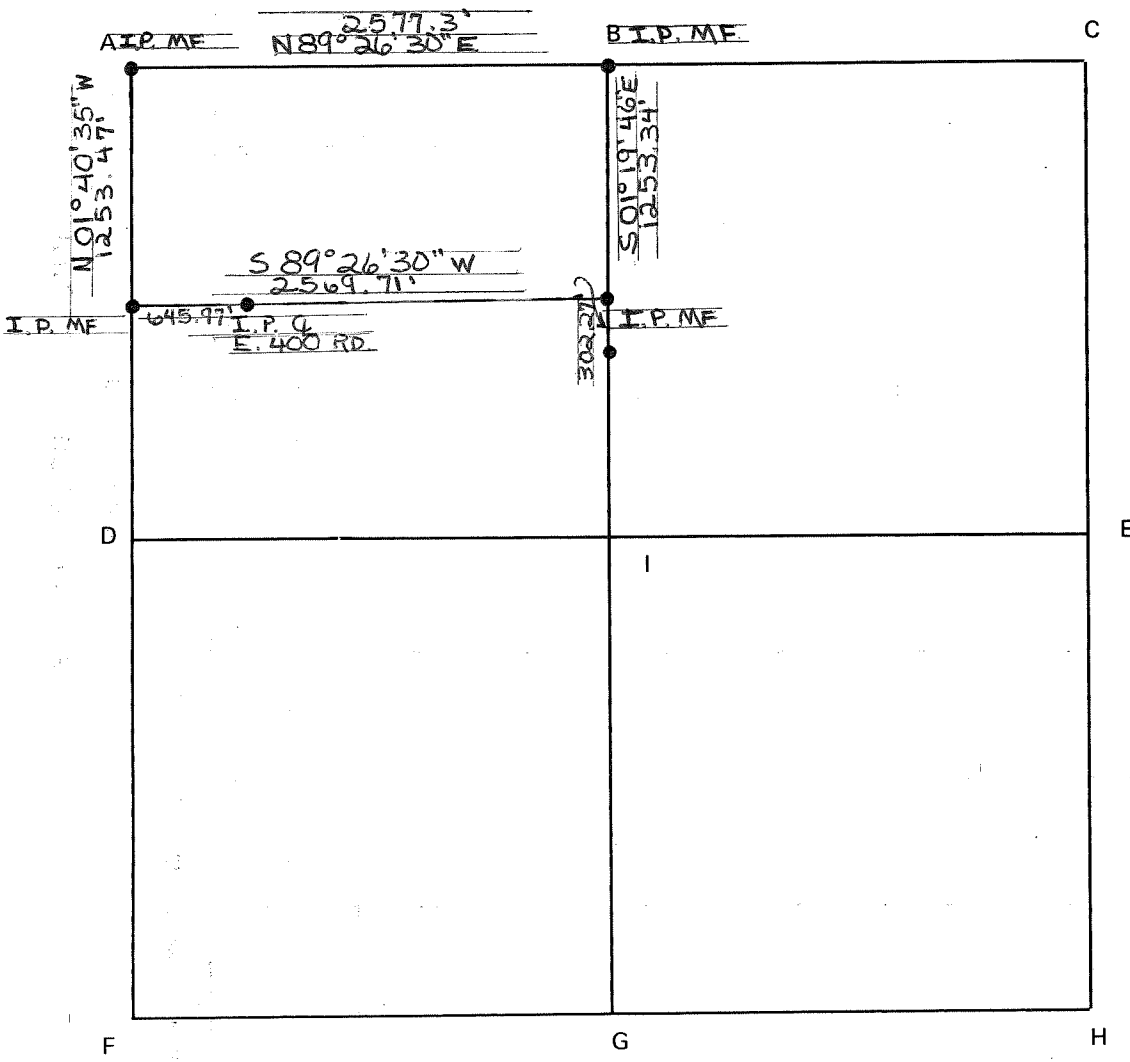
CORNER CODE SYSTEM
Warrick County



NOTES

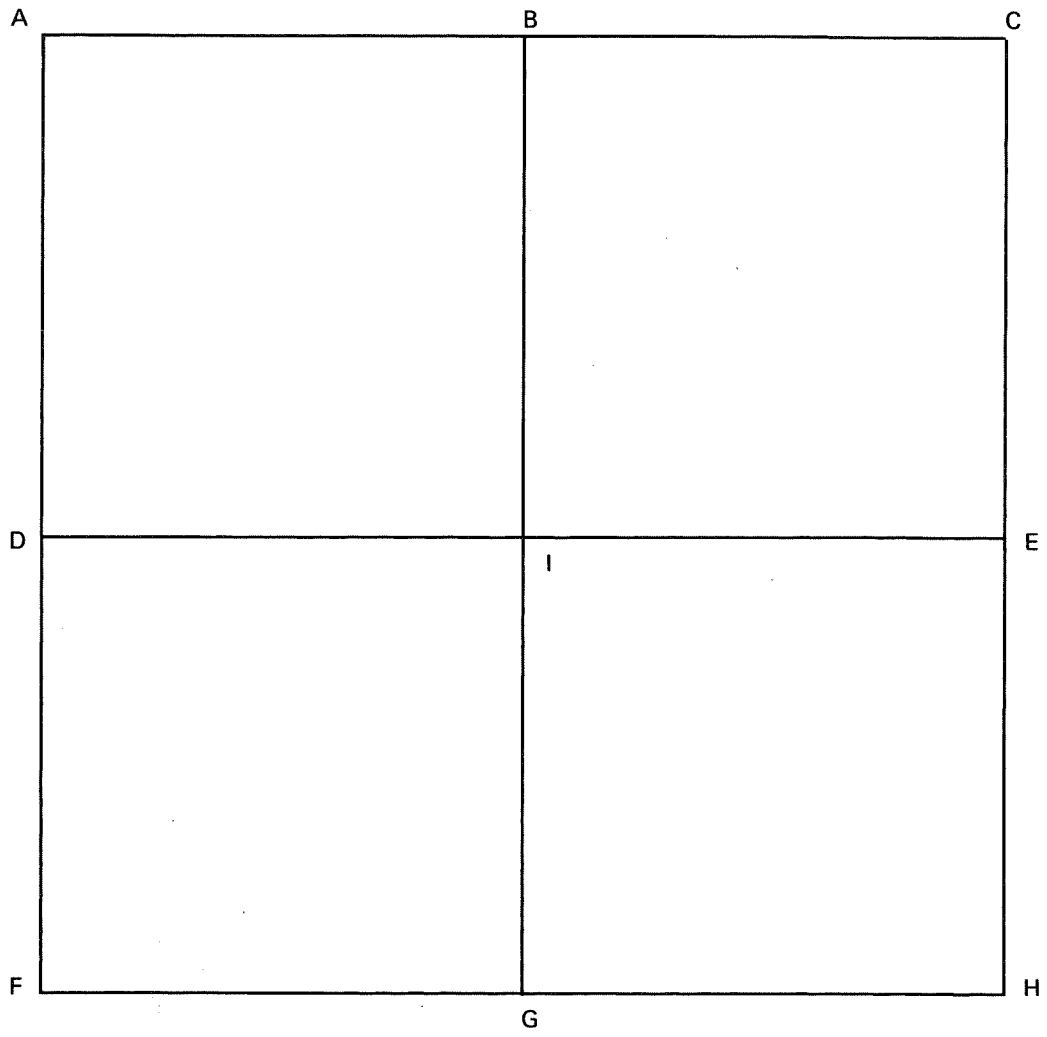
Section 2 Township 5 South Range 7 WEST 2nd P.M.

CORNER CODE SYSTEM
Warrick County



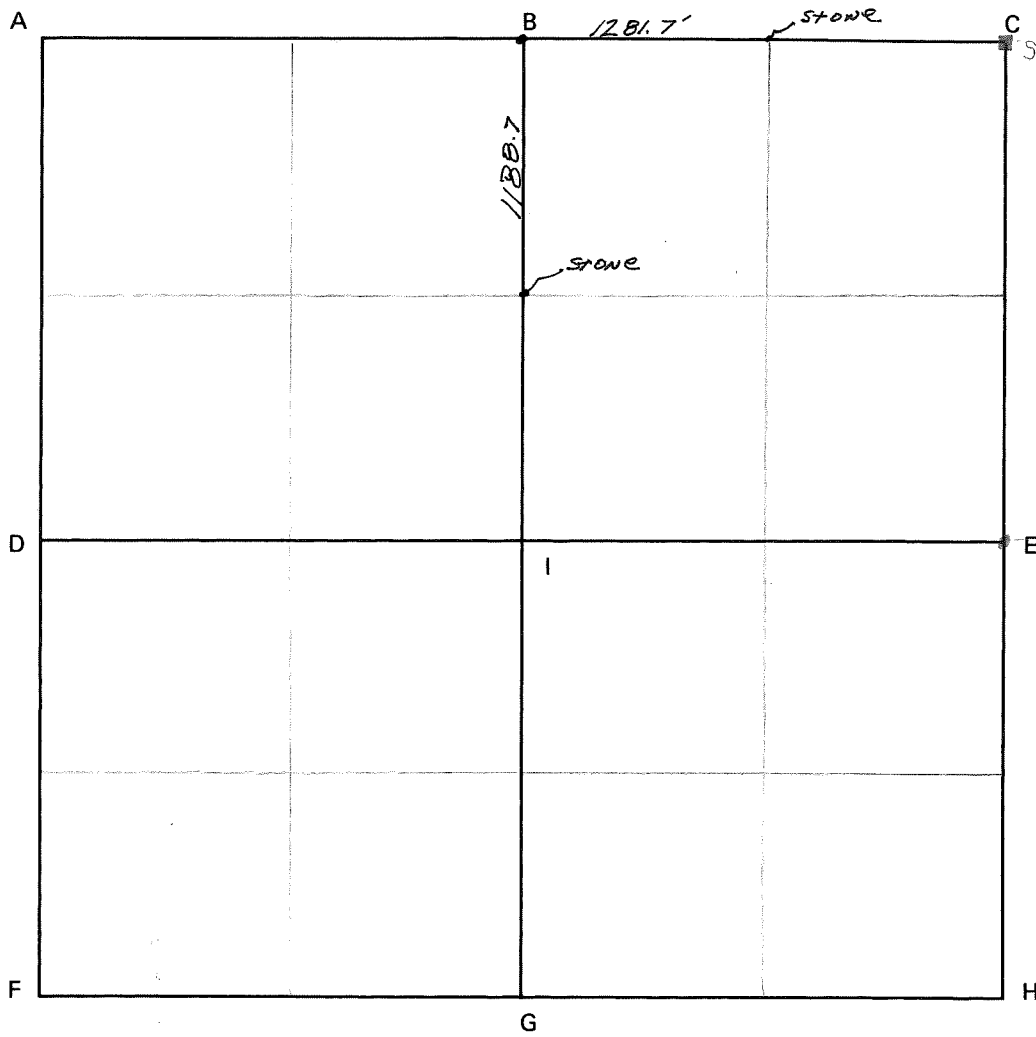
NOTES

CORNER CODE SYSTEM
Warrick County



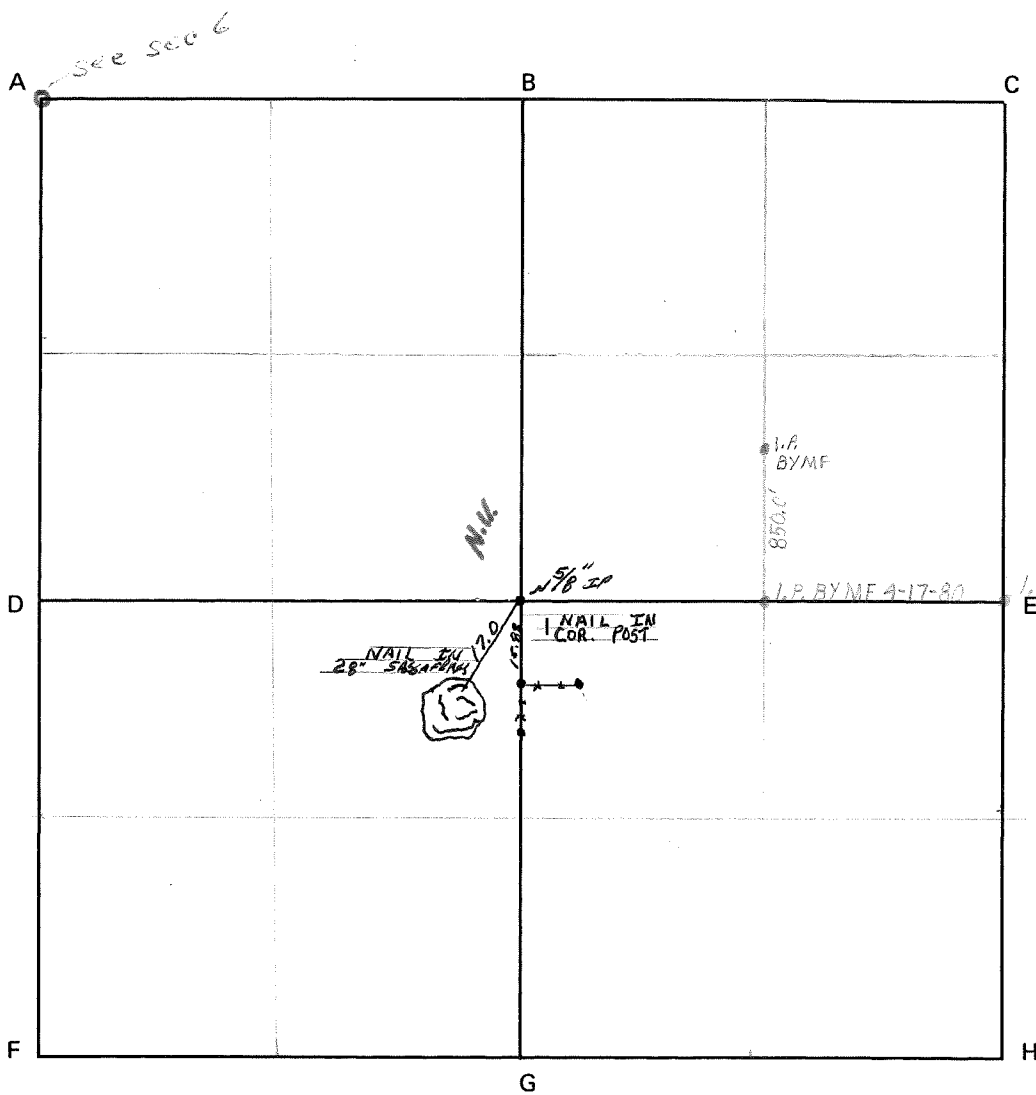
NOTES

CORNER CODE SYSTEM
Warrick County



NOTES

CORNER CODE SYSTEM
Warrick County



NOTES

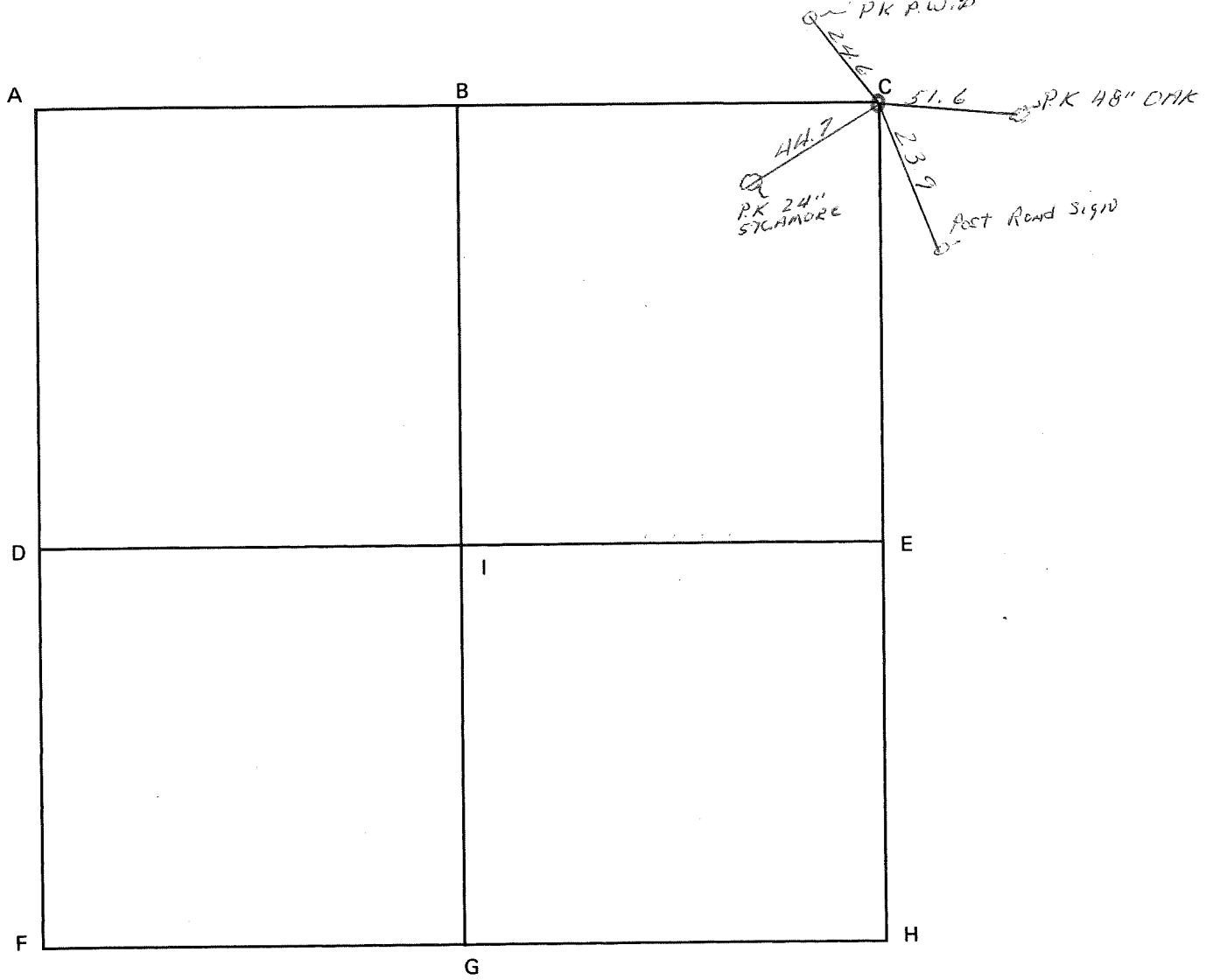
RECORD OF SECTION CORNERS

Warrick County

Section 5 Township 5 South Range 7 West 2nd Principle Meridian

| Date | Cor | Location | Description of | | Distance from Corner | Bearing from Corner (North Assumed) | Cond | Check By | Remarks |
|---------|-----|----------------------------|----------------|---|----------------------------------|--|------|----------|--|
| | | | Monument | Reference | | | | | |
| 7-30-74 | A | NW cor NW $\frac{1}{4}$ | 3/4" iron pin | 1) PK nail 2) Post 3) PK nail 4) PK nail | 51.6' 23.9' 44.7' 24.6' | S 75° E S 28° E S 43° W N 36° W | poor | GAT | Found in place In 48" pin oak Post of ROAD sign In 24" sycamore In FWP |

CORNER CODE SYSTEM
Warrick County



NOTES

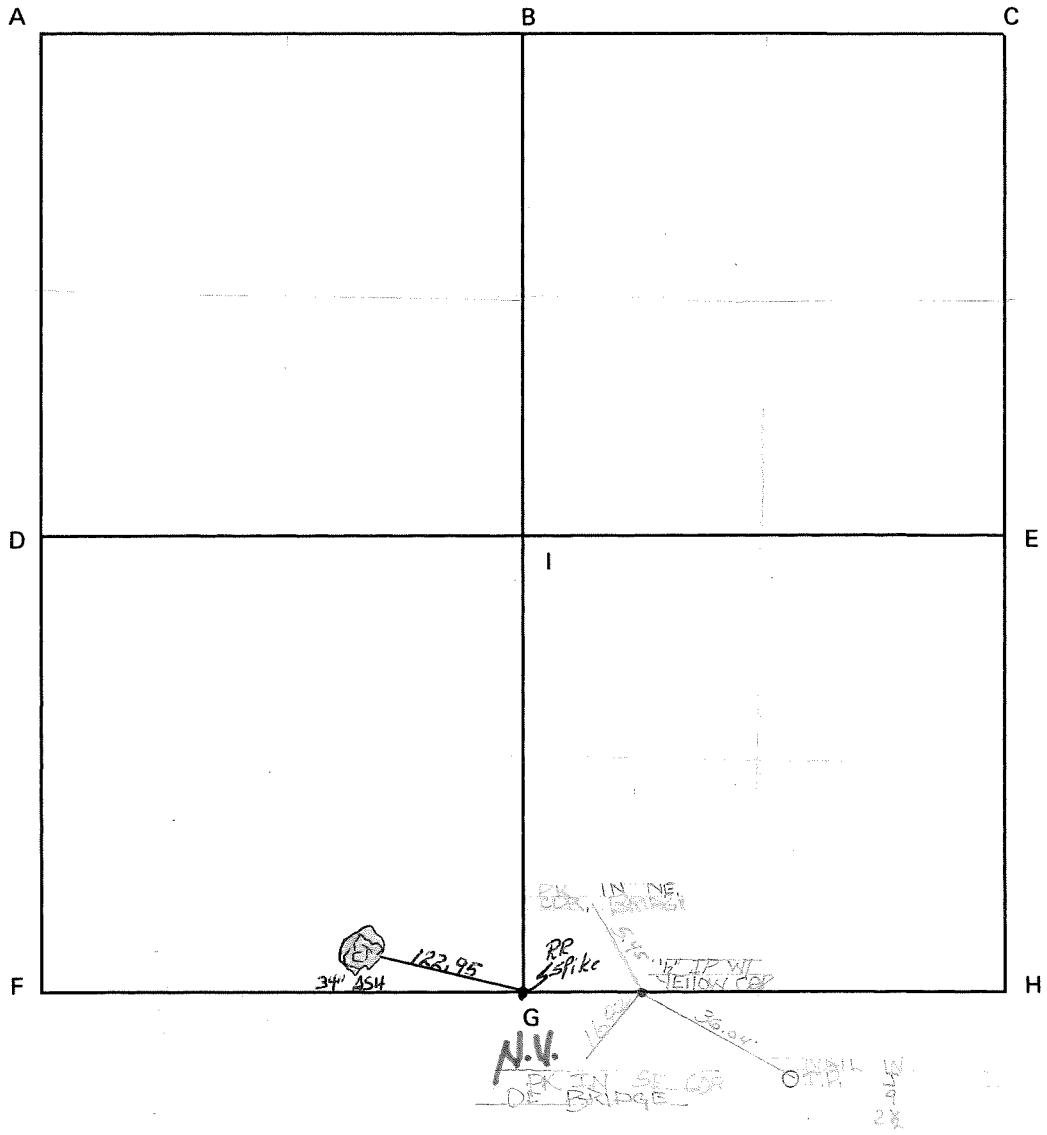
RECORD OF SECTION CORNERS

Warrick County

Section 6 Township 5 South Range 7 West 2nd Principle Meridian _____

| Date | Cor | Location | Description of | | Distance from Corner | Bearing from Corner (North Assumed) | Cond | Check By | Remarks |
|---------|-----|-----------------------------|------------------|------------|----------------------|-------------------------------------|------|----------|--|
| | | | Monument | Reference | | | | | |
| 7-30-74 | A | NE cor. NE $\frac{1}{4}$ | 3/4" iron pin | | | | poor | GAT | Found in place In 48" pin oak Post of ROAD sign In 24" sycamore In FWP |
| | B | | | | | | | | |
| | C | | | 1) PK nail | 51.6' | S 75° E | | | |
| | | | | 2) Post | 23.9' | S 28° E | | | |
| | | 3) PK nail | 44.7' | S 43° W | | | | | |
| | | 4) PK nail | 24.6' | N 36° W | | | | | |

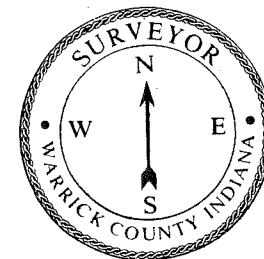
CORNER CODE SYSTEM
Warrick County



NOTES

G, NORA

CORNER RECORD
WARRICK COUNTY



DESCRIPTION:

SE CORNER _____

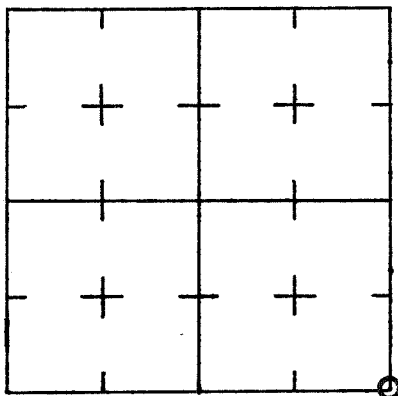
SECTION 8, T. 5 S. R. 7 W.

2nd PRINCIPLE MERIDIAN

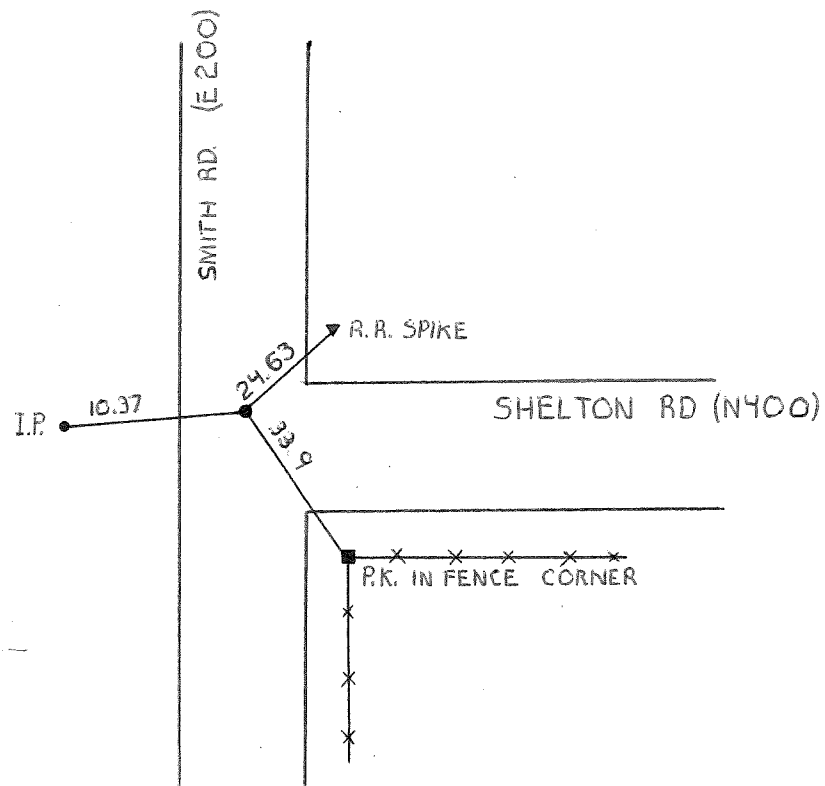
WARRICK COUNTY SURVEYOR

MICHAEL IRVIN

INDICATE CORNER REFERENCED



DESCRIBE CORNER REFERENCED



STATE PLANE COORDINATE DATA

INDIANA ZONE: WEST

X _____

Y _____

ESTABLISHED BY:

APPROVED BY

DATE
10-1-73

REFERENCED BY:

DATE

COR. H

000061

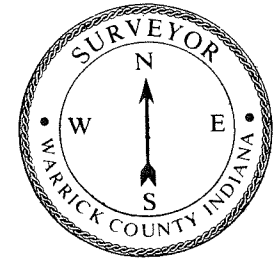
(SE cor sec 8 T55R7W + SW cor sec 9 T55R7W
NW cor sec 16 T55R7W + NE cor sec 17 T55R7W)

Type Monument: I.P. (existing)

Date referenced: 10-1-73

referenced by: SWC

CORNER RECORD
WARRICK COUNTY



DESCRIPTION:

SW CORNER NW¹/₄ NW¹/₄

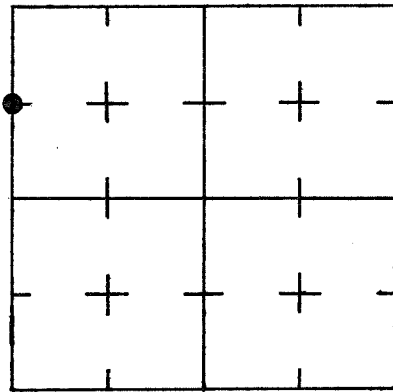
SECTION 8, T. 5 S. R. 7 W.

2nd PRINCIPLE MERIDIAN

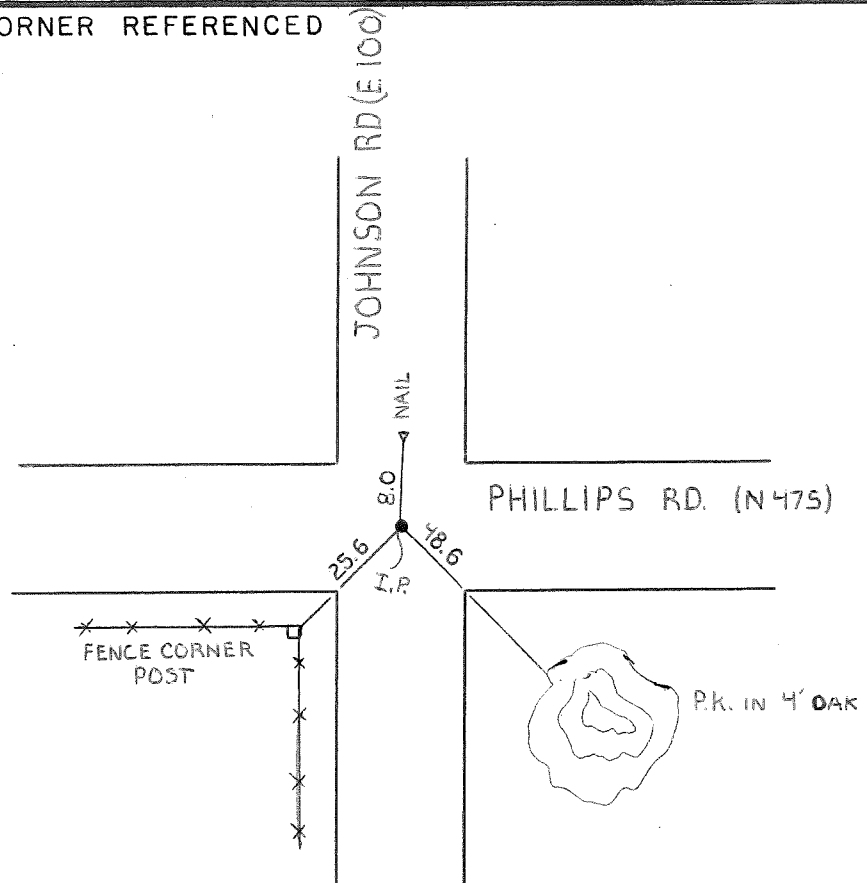
WARRICK COUNTY SURVEYOR

MICHAEL IRVIN

INDICATE CORNER REFERENCED



DESCRIBE CORNER REFERENCED



STATE PLANE COORDINATE DATA

INDIANA ZONE: WEST

X _____

Y _____

ESTABLISHED BY:

APPROVED BY

DATE
10-1-73

REFERENCED BY:

DATE

000060

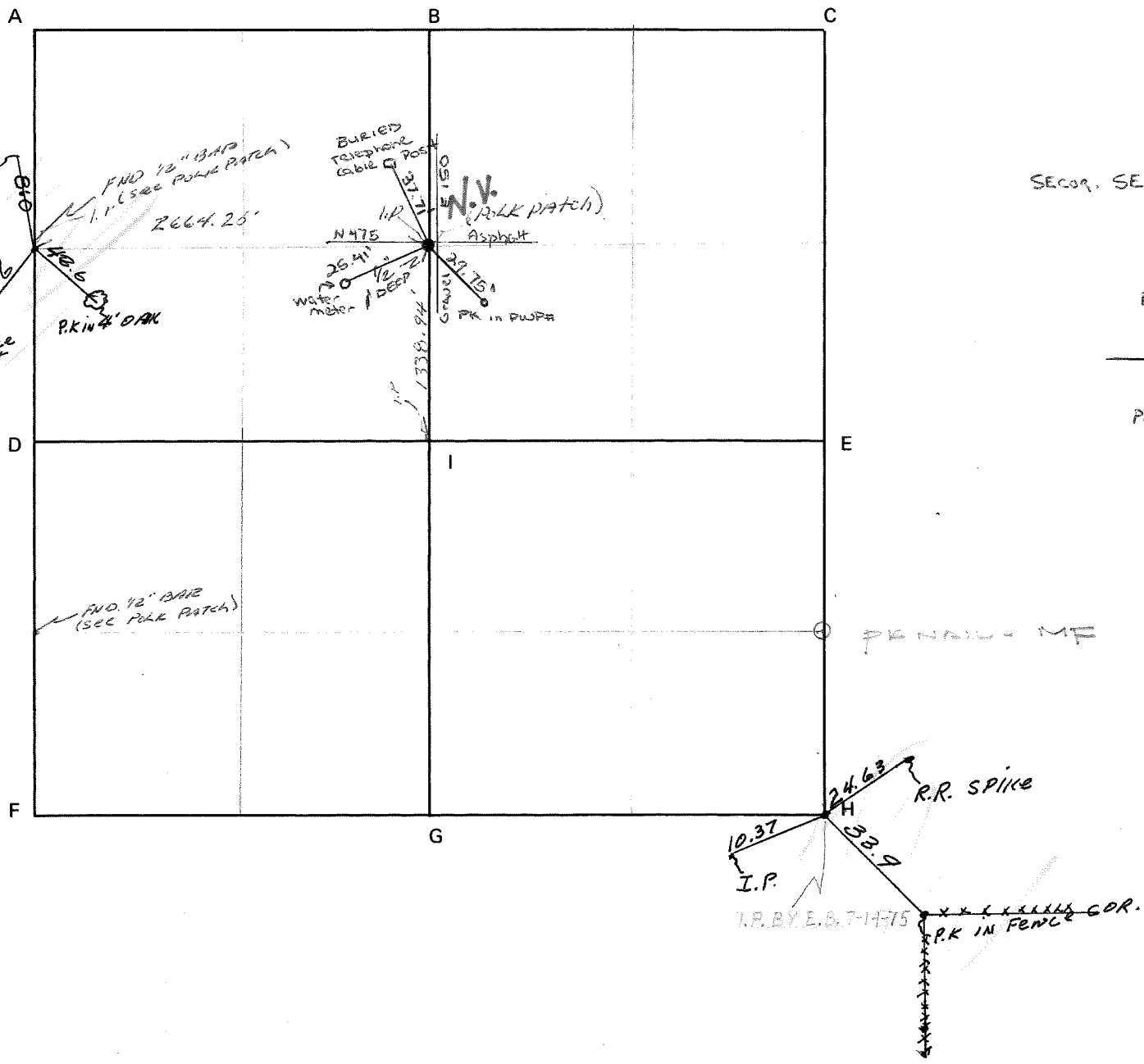
(SW cor NW $\frac{1}{4}$ NW $\frac{1}{4}$ ~~sec~~ 8-55-7W) +
SE cor NE $\frac{1}{4}$ NE $\frac{1}{4}$ sec 7-T55-R7W

Type Monument: I.P. (existing)

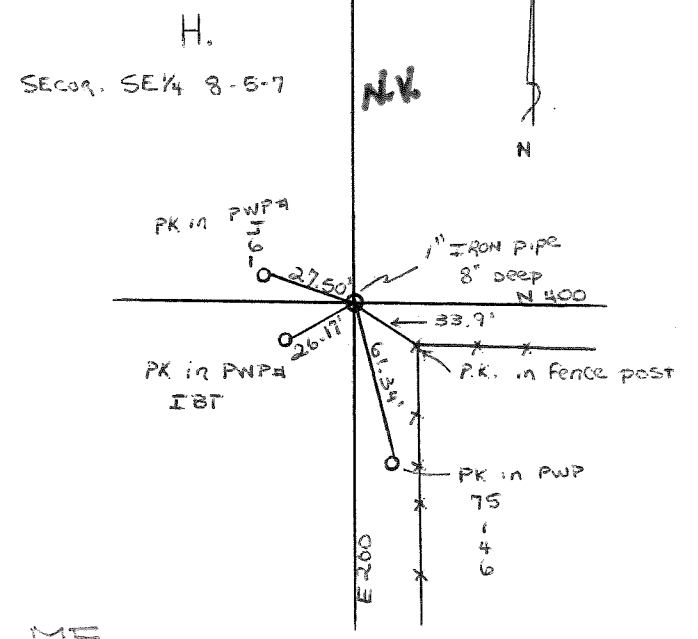
Date referenced: 10-1-73

referenced by: SWC

CORNER CODE SYSTEM
Warrick County

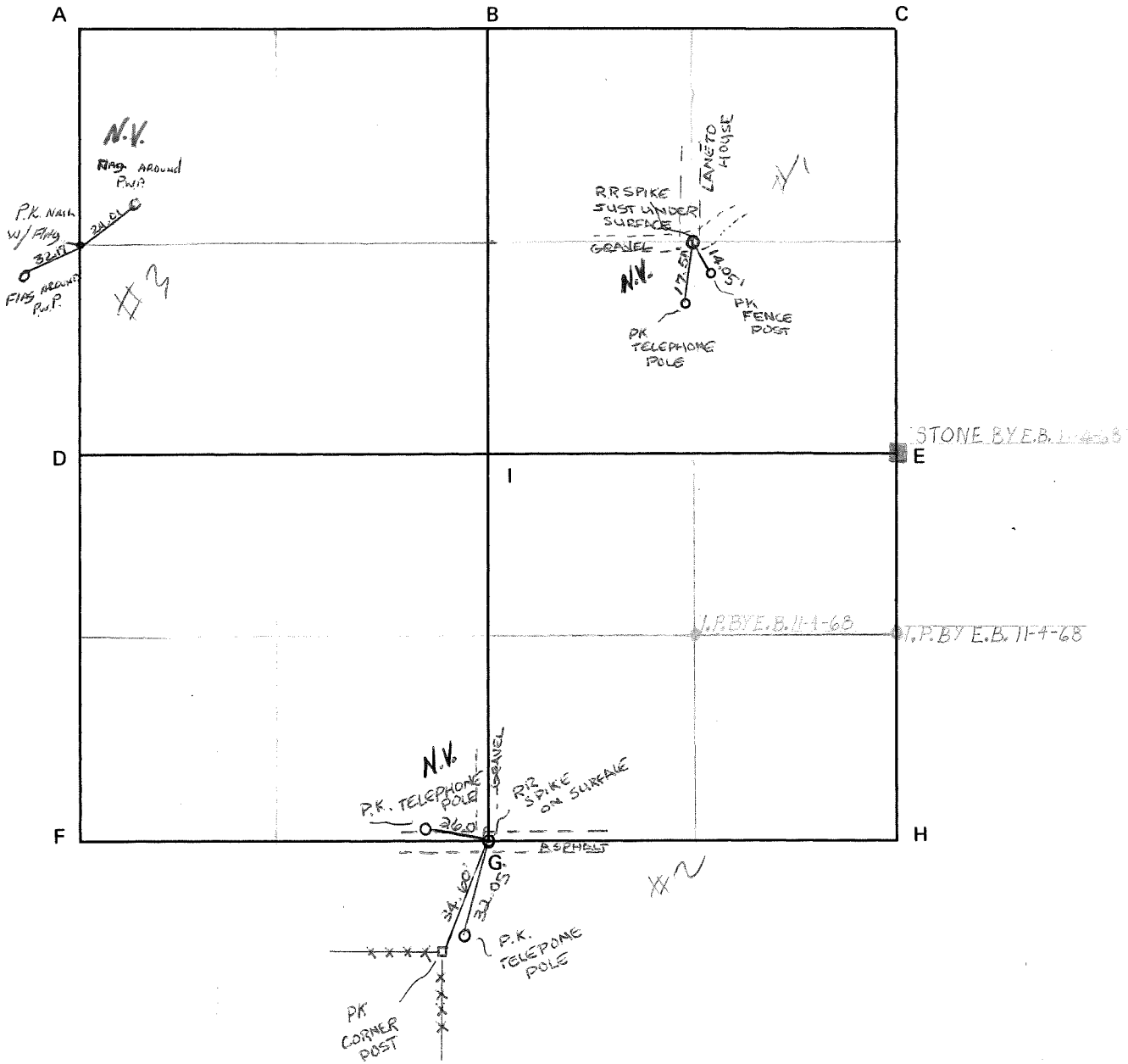


NOTES

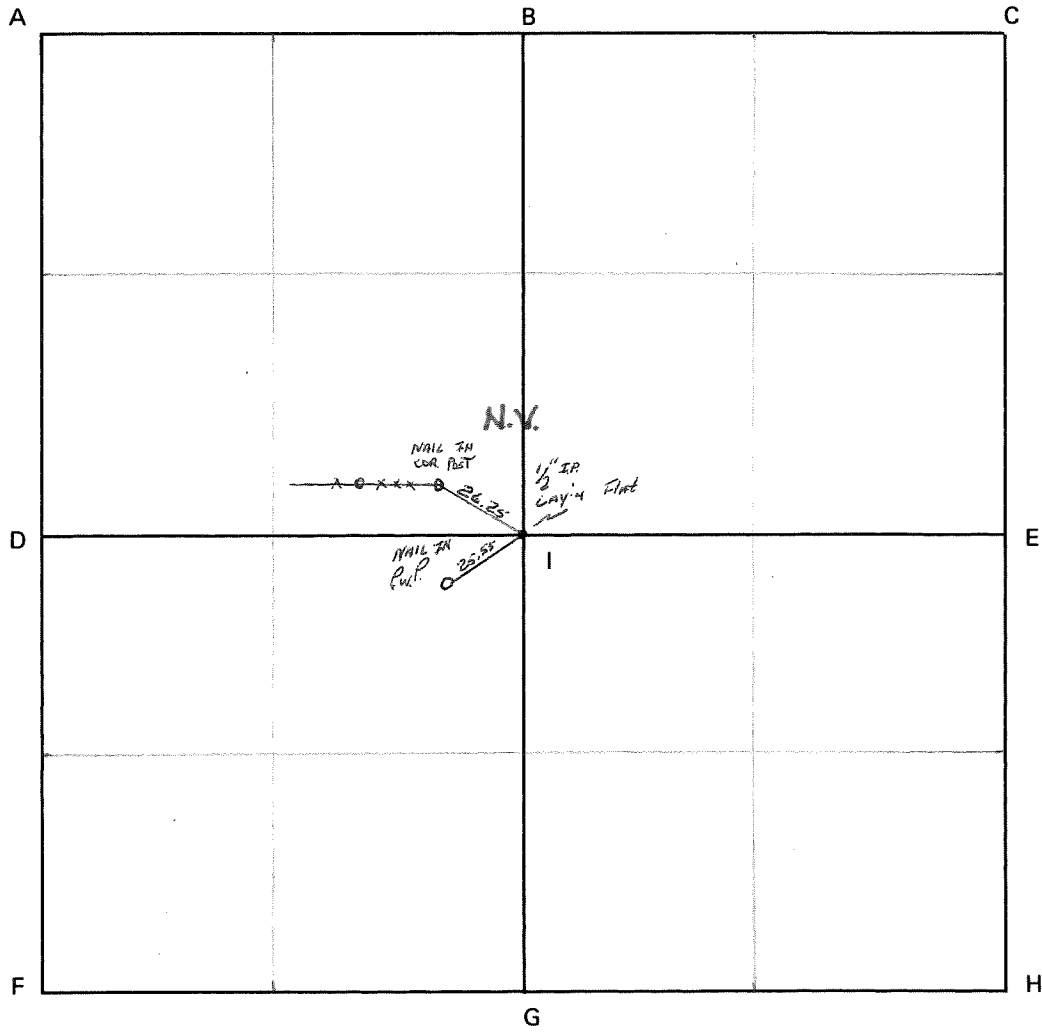


CORNER CODE SYSTEM
Warrick County

NOTES



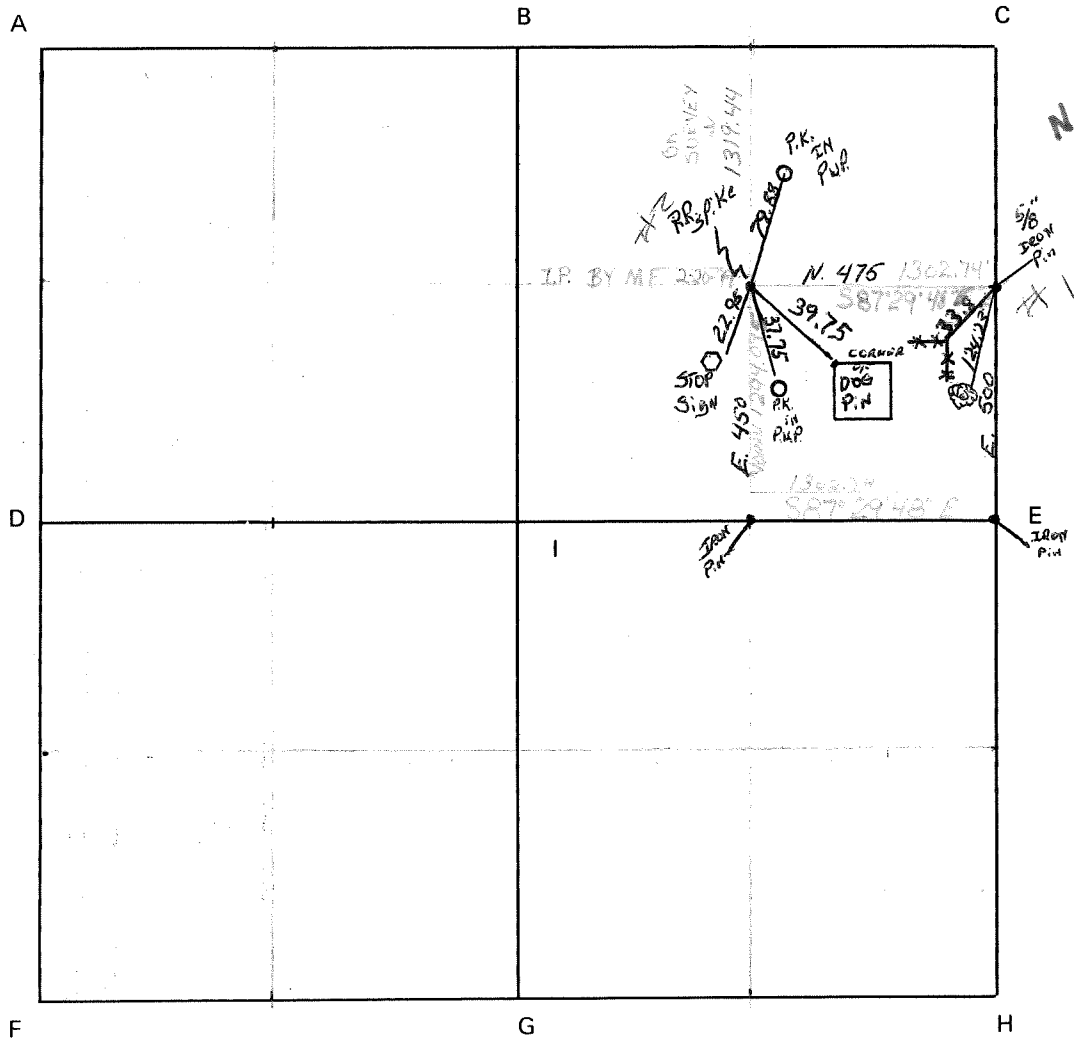
CORNER CODE SYSTEM
Warrick County



NOTES

Section 11 Township 5 Range 7 2nd P.M.

CORNER CODE SYSTEM
Warrick County



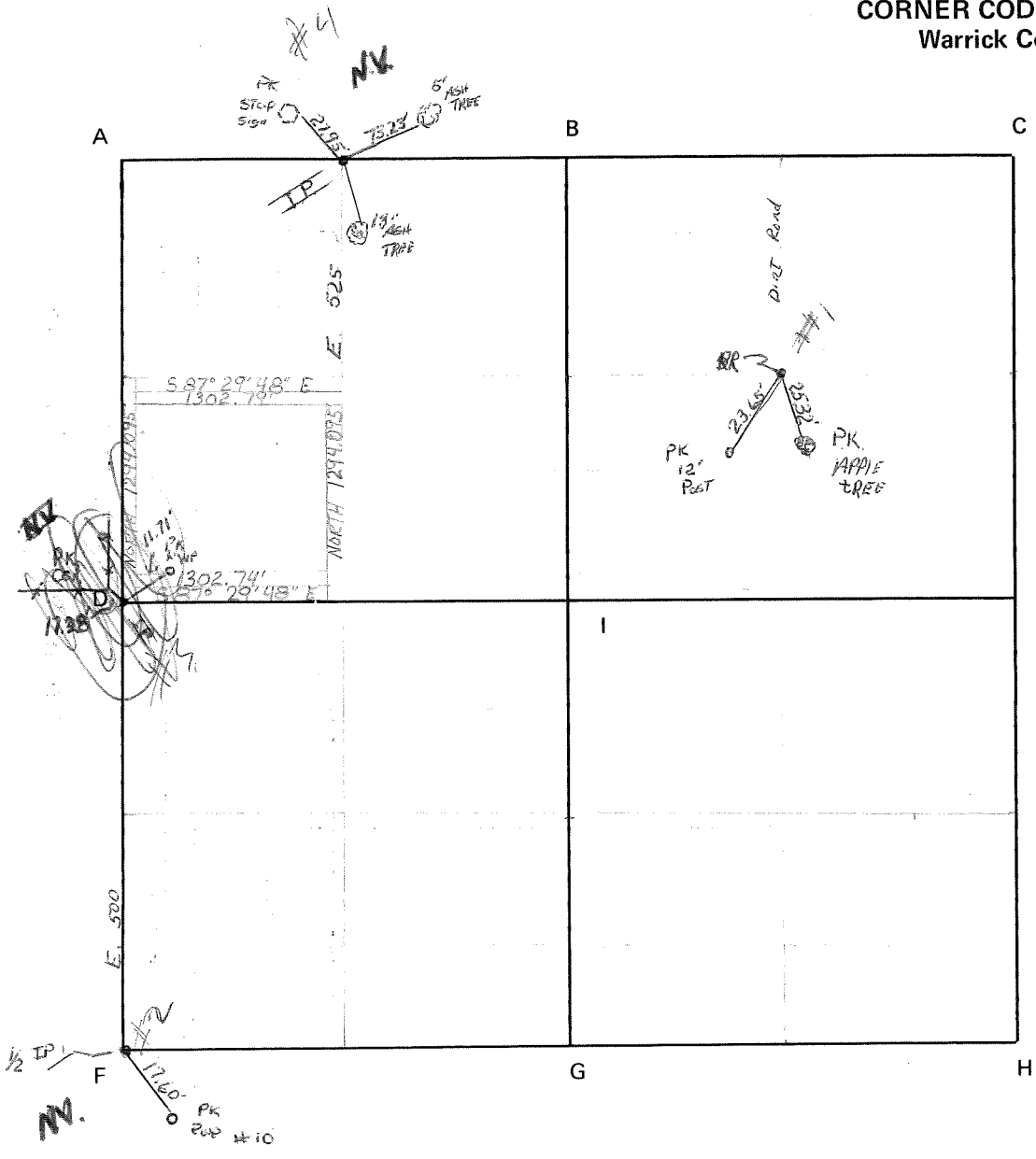
NOTES

N.V.

Section 12 Township 5 South Range 7 WEST 2nd P.M.

CORNER CODE SYSTEM
Warrick County

NOTES

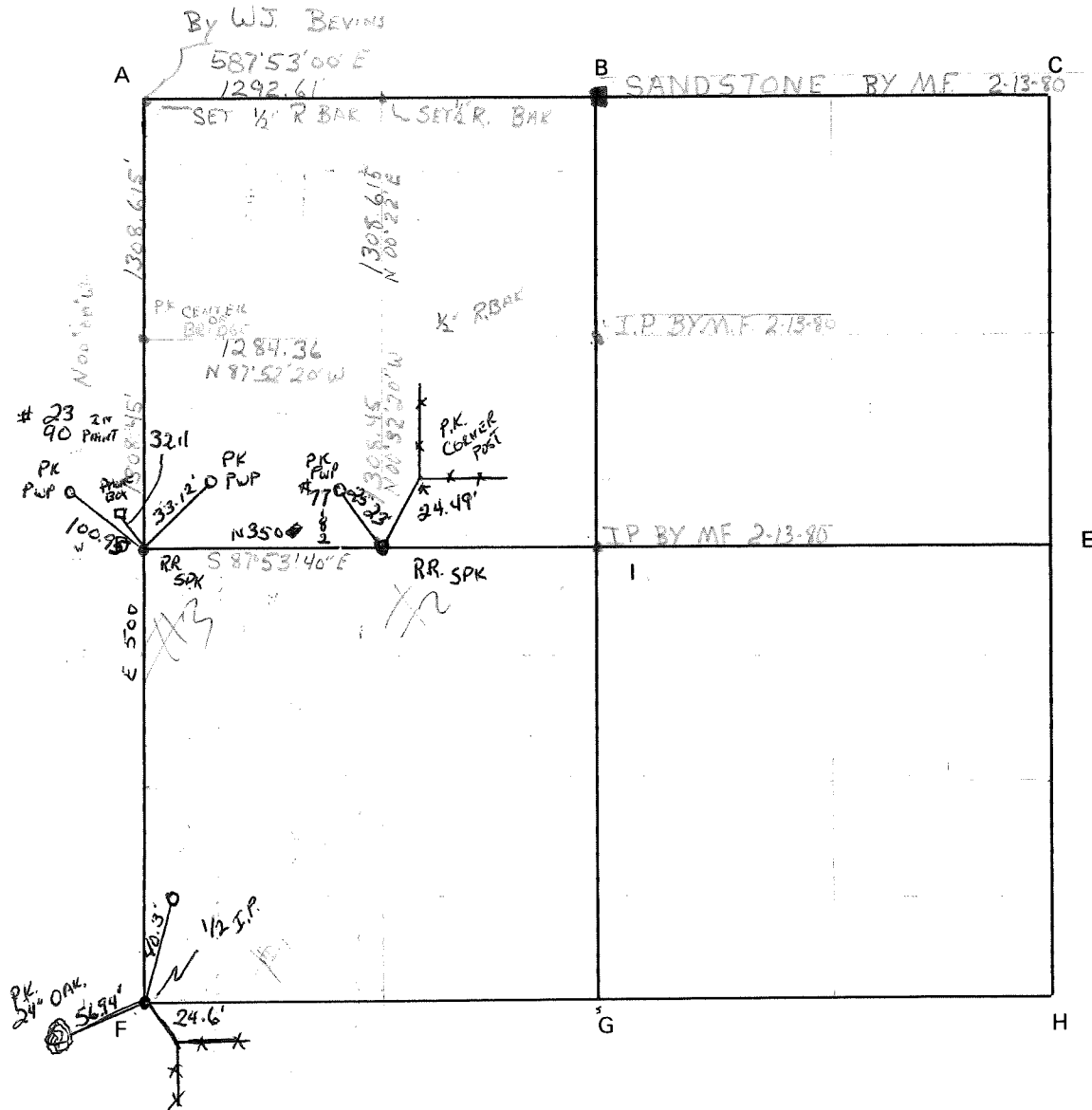


Section 13 Township 5 South Range 7 WEST 2nd P.M.

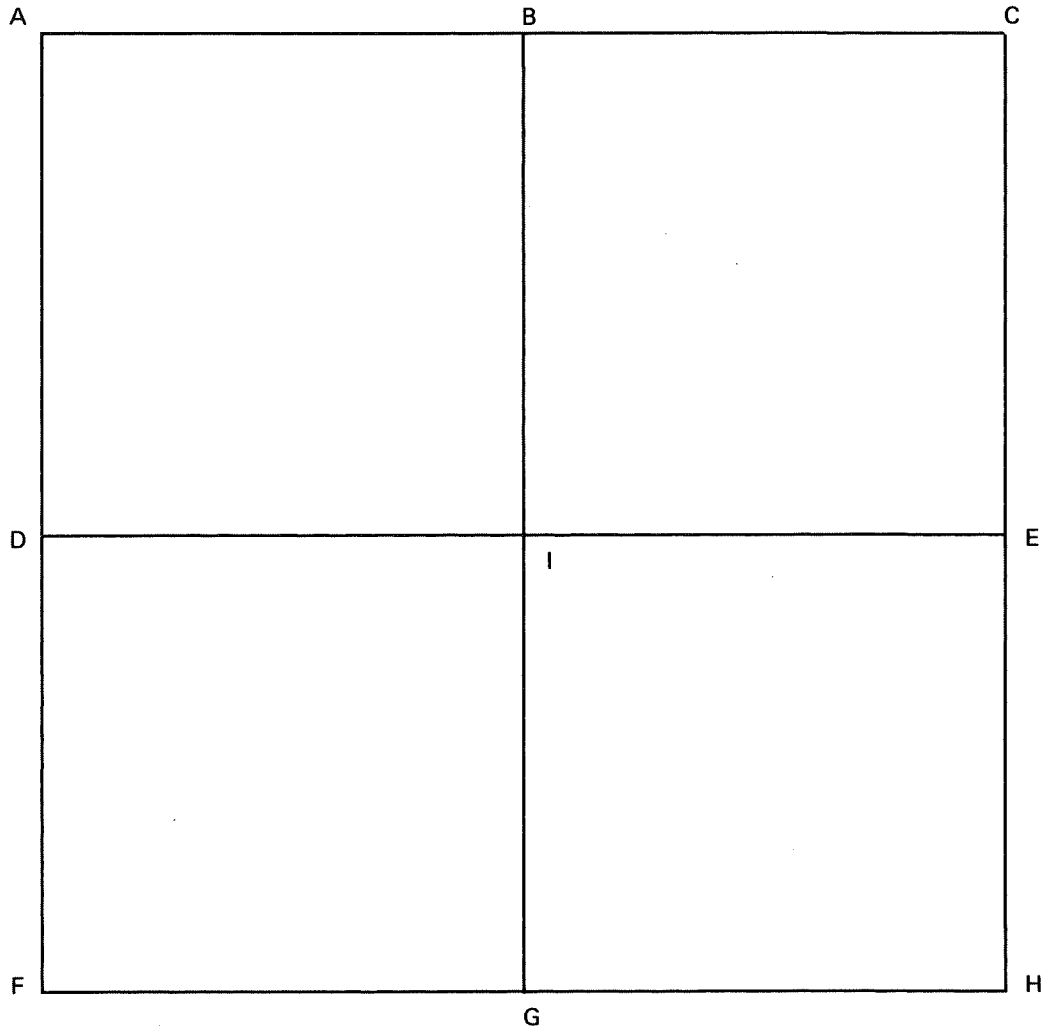
CORNER CODE SYSTEM
Warrick County

N.V.

NOTES



CORNER CODE SYSTEM
Warrick County



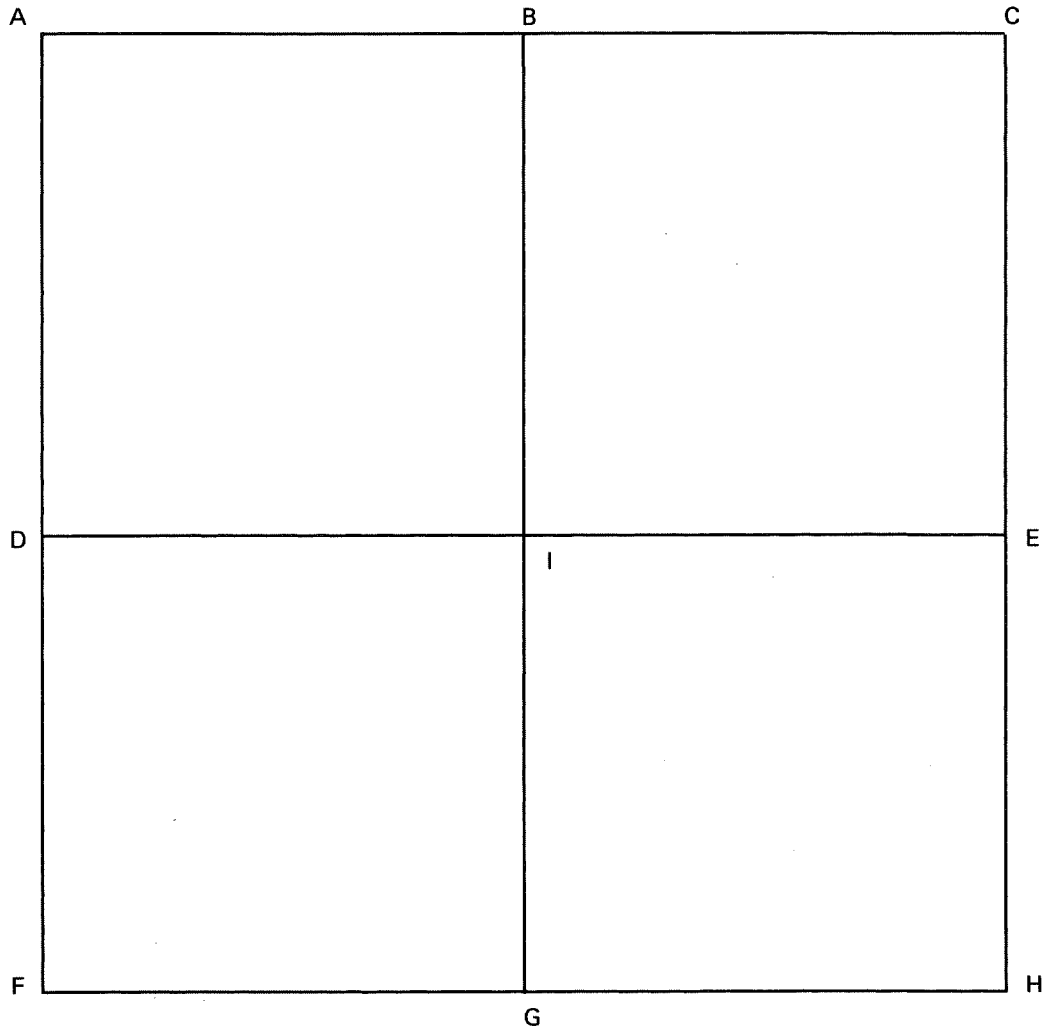
NOTES

EAMES

Eames
on Barren Fork Creek
Pt. SE $\frac{1}{4}$ SE $\frac{1}{4}$ 13-5-7

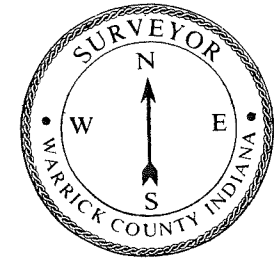
PB 1 PG 83

CORNER CODE SYSTEM
Warrick County



NOTES

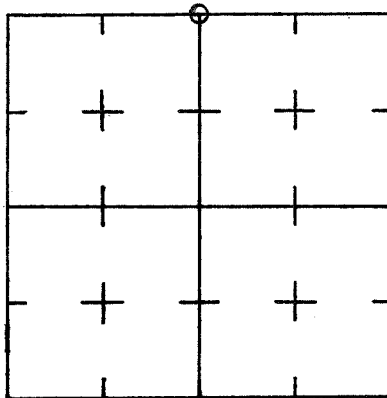
CORNER RECORD
WARRICK COUNTY



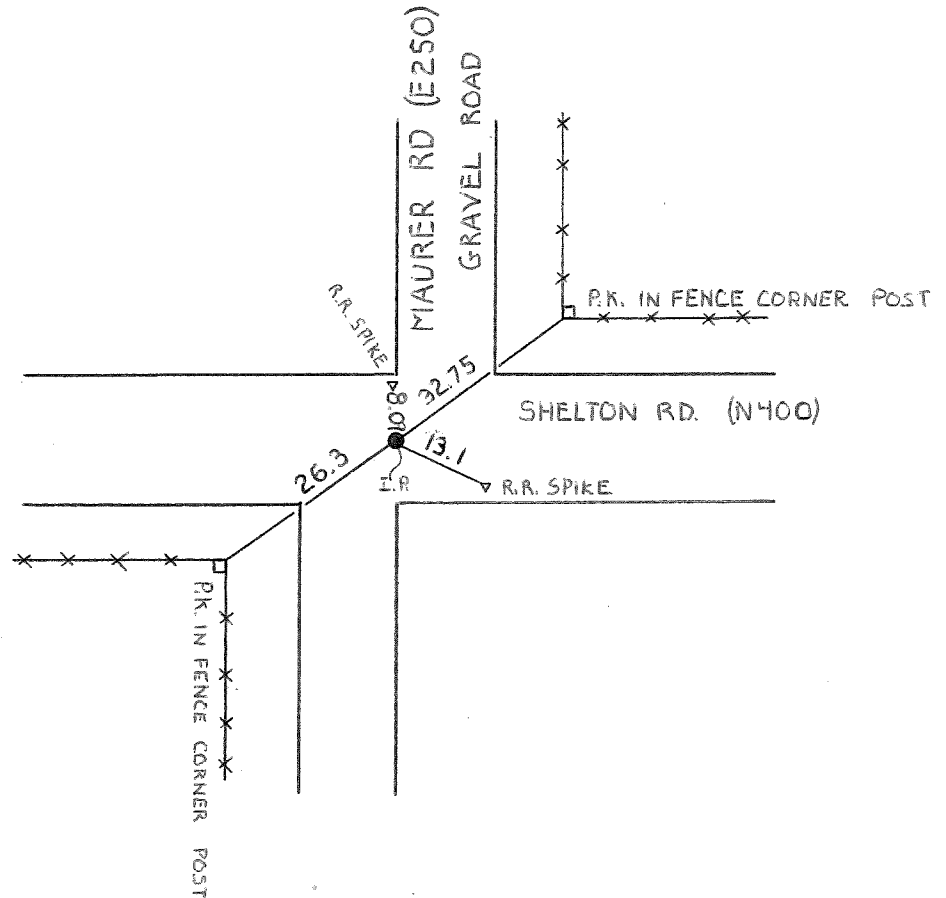
DESCRIPTION:
NE CORNER NW¹/₄
 SECTION 16, T. 5 S. R. 7 W.
 2nd PRINCIPLE MERIDIAN

WARRICK COUNTY SURVEYOR
 MICHAEL IRVIN

INDICATE CORNER REFERENCED



DESCRIBE CORNER REFERENCED



STATE PLANE COORDINATE DATA

INDIANA ZONE: WEST

X _____

Y _____

ESTABLISHED BY:

NOT VERIFIED

APPROVED BY

DATE
10-2-73

REFERENCED BY:

DATE

000062

SW cor SE $\frac{1}{4}$ sec 9 T55 R7W
(NE cor NW $\frac{1}{4}$ sec 10 T55 R7W)

Type Monument: I.P. (existing)

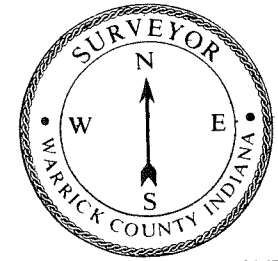


Date referenced: 10-2-73

referenced by: SWC



CORNER RECORD
WARRICK COUNTY



DESCRIPTION:

SW CORNER SW¹/₄ SE¹/₄

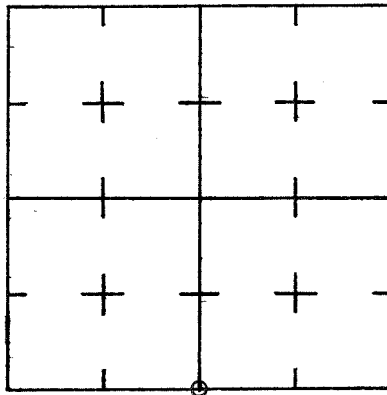
SECTION 16, T. 5 S. R. 7 W.

2nd PRINCIPLE MERIDIAN

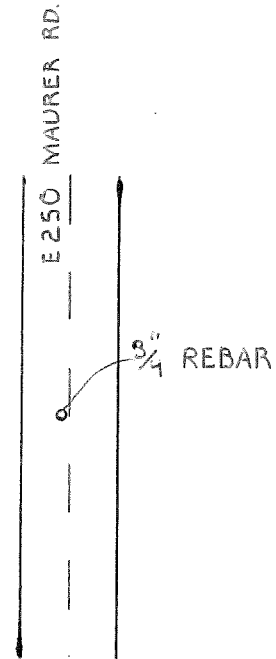
WARRICK COUNTY SURVEYOR

MICHAEL IRVIN

INDICATE CORNER REFERENCED



DESCRIBE CORNER REFERENCED



STATE PLANE COORDINATE DATA

INDIANA ZONE: WEST

X _____

Y _____

ESTABLISHED BY:

APPROVED BY

DATE

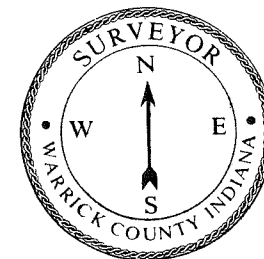
REFERENCED BY:

G.B.

DATE

10-9-84

CORNER RECORD
WARRICK COUNTY



DESCRIPTION:

SW CORNER NW 1/4

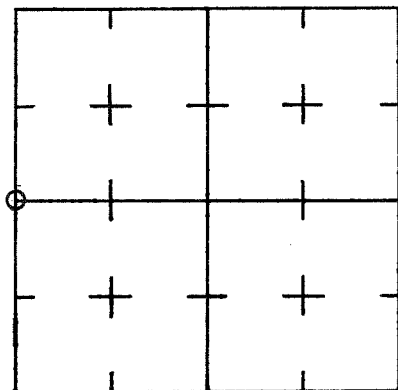
SECTION 16, T. 5 S. R. 7 W.

2nd PRINCIPLE MERIDIAN

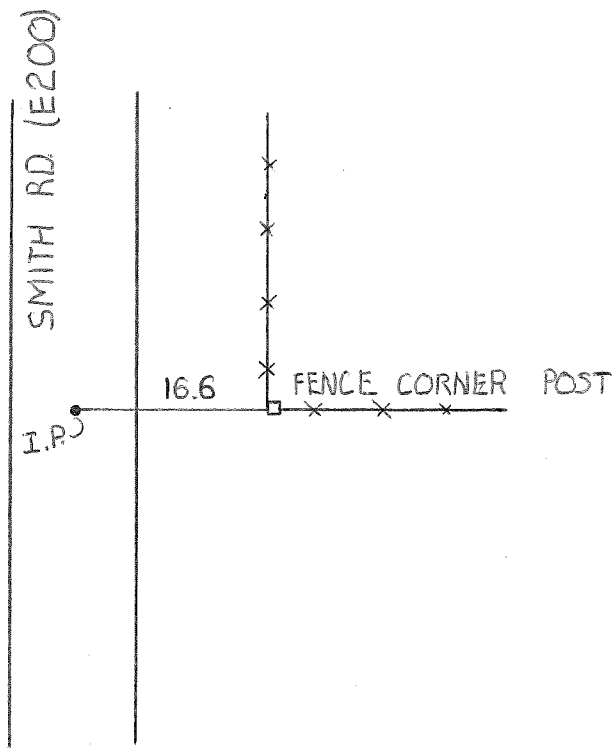
WARRICK COUNTY SURVEYOR

MICHAEL IRVIN

INDICATE CORNER REFERENCED



DESCRIBE CORNER REFERENCED



STATE PLANE COORDINATE DATA

INDIANA ZONE: WEST

X _____

Y _____

ESTABLISHED BY:

APPROVED BY

DATE
10-1-73

REFERENCED BY:

DATE

COR. D.

000063

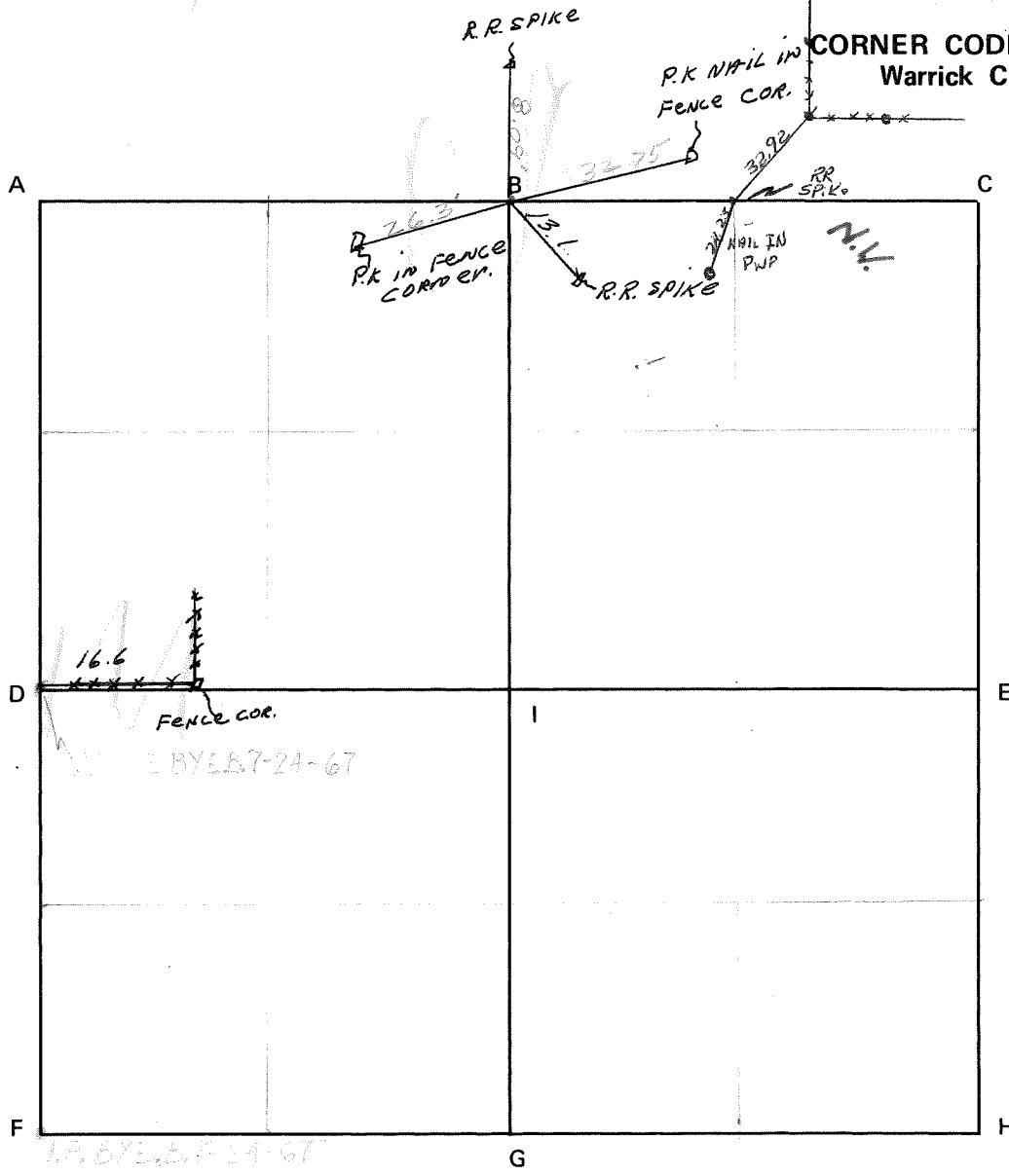
(SW cor NW $\frac{1}{4}$ sec 16 T5S R7W)
SE cor NE $\frac{1}{4}$ sec 17 T5S R7W

Type Monument: I.P.

Date referenced: 10-1-73

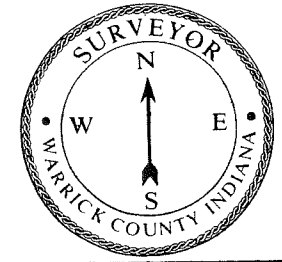
referenced by: SWC

CORNER CODE SYSTEM
Warrick County



NOTES

CORNER RECORD
WARRICK COUNTY



DESCRIPTION: CENTER OF SECTION

_____ CORNER _____

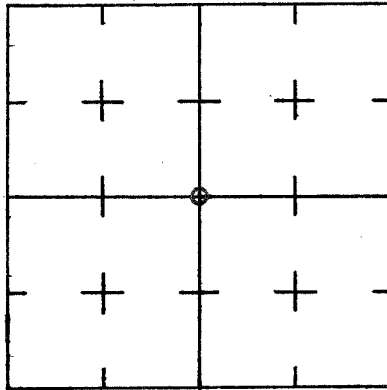
SECTION 16, T. 5 S. R. 7 W.

2nd PRINCIPLE MERIDIAN

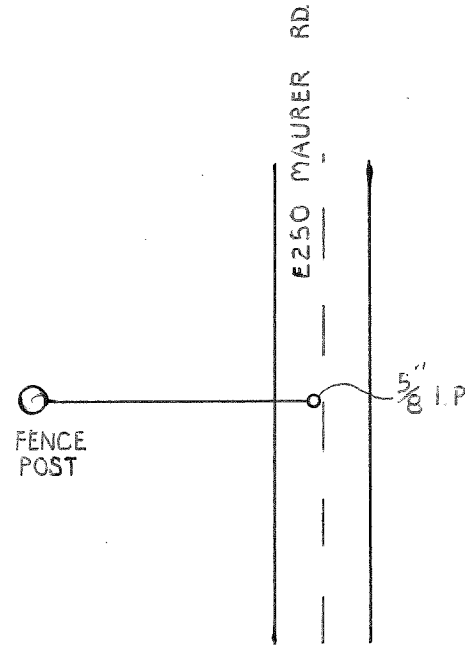
WARRICK COUNTY SURVEYOR

MICHAEL IRVIN

INDICATE CORNER REFERENCED



DESCRIBE CORNER REFERENCED



STATE PLANE COORDINATE DATA

INDIANA ZONE: WEST

X _____

Y _____

ESTABLISHED BY:

APPROVED BY

DATE

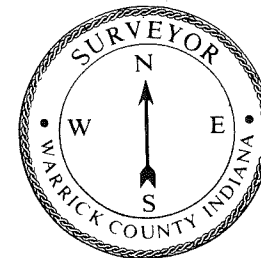
REFERENCED BY:

G.B.

DATE

10-9-84

CORNER RECORD
WARRICK COUNTY



DESCRIPTION:

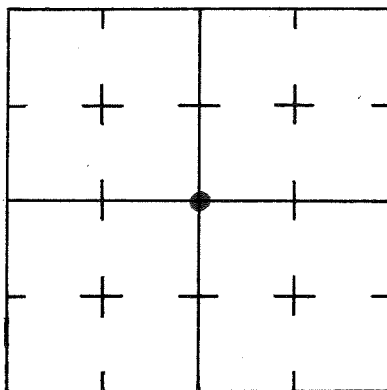
NE CORNER NE¹/₄ SW¹/₄

SECTION 17, T. 5 S. R. 7 W.

2nd PRINCIPLE MERIDIAN

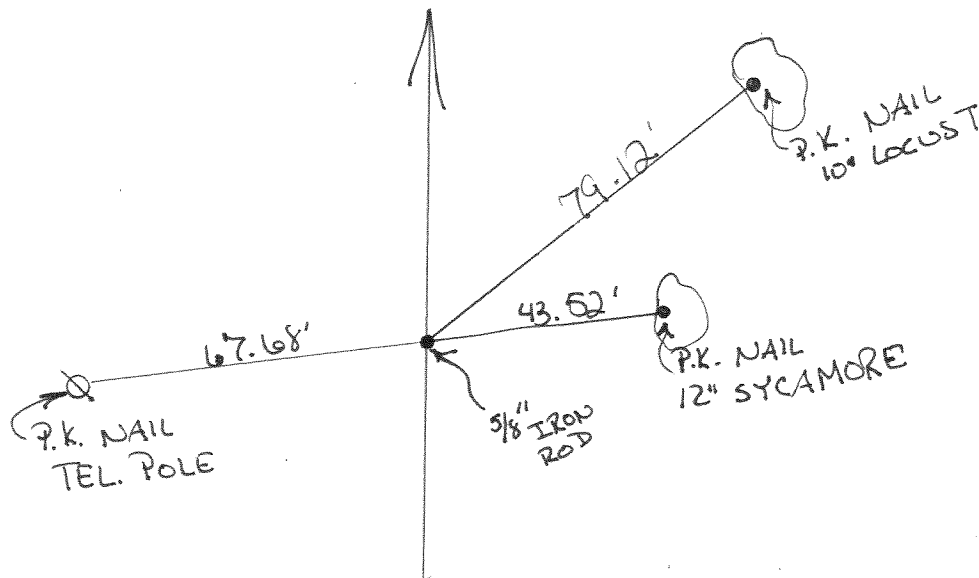
WARRICK COUNTY SURVEYOR
KARAN HARGRAVE-BARNHILL

INDICATE CORNER REFERENCED



DESCRIBE CORNER REFERENCED

FOREST LAKE SUB.



STATE PLANE COORDINATE DATA

INDIANA ZONE: WEST

X _____

Y _____

ESTABLISHED BY:

APPROVED BY

DATE

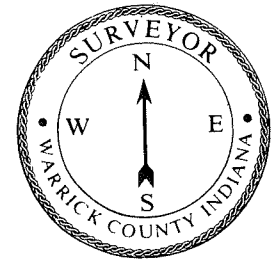
REFERENCED BY:

DATE

RALPH A. EASLEY SR.

7-1-76

CORNER RECORD
WARRICK COUNTY



DESCRIPTION:

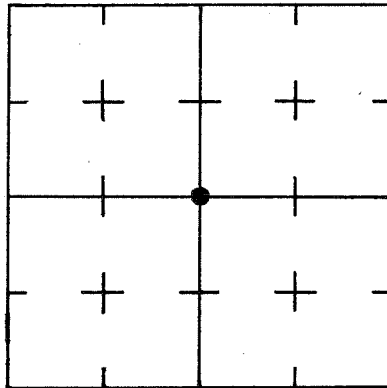
SW CORNER SW 1/4 NE 1/4

SECTION 17, T. 5 S. R. 7 W.

2nd PRINCIPLE MERIDIAN

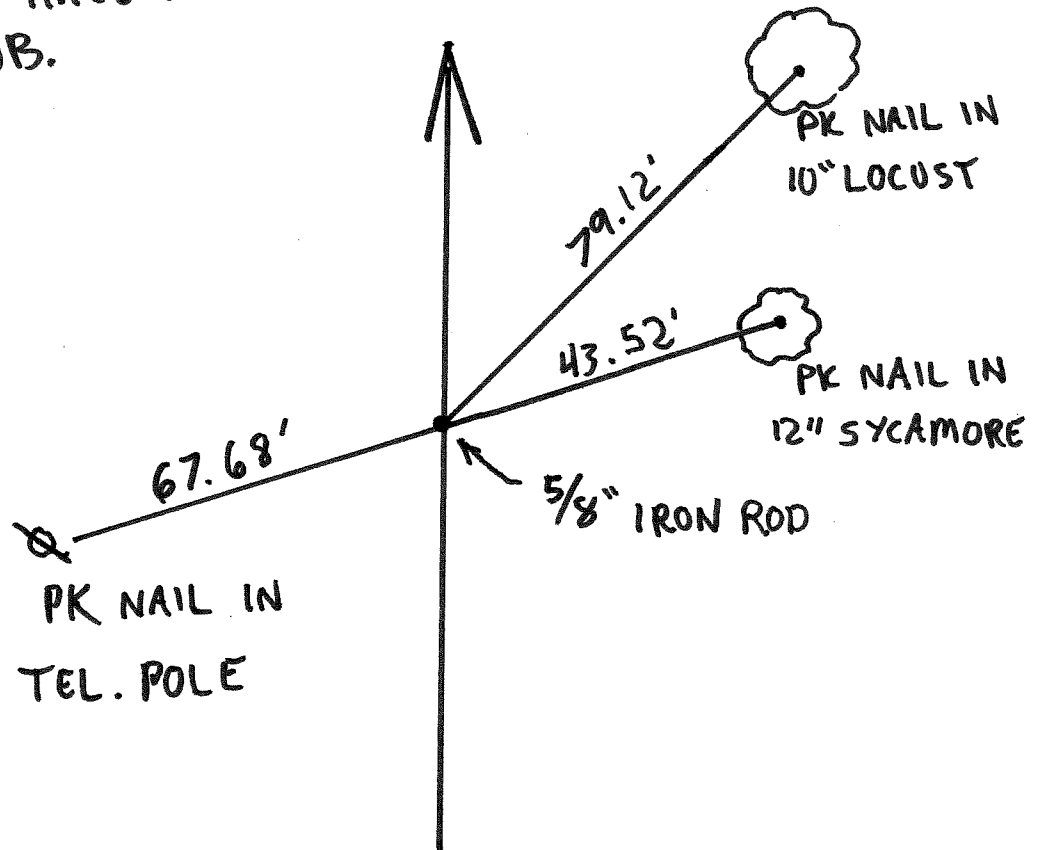
WARRICK COUNTY SURVEYOR
KARAN HARGRAVE-BARNHILL

INDICATE CORNER REFERENCED



DESCRIBE CORNER REFERENCED

DEER HAVEN
SUB.



STATE PLANE COORDINATE DATA

INDIANA ZONE: WEST

X _____

Y _____

ESTABLISHED BY:

APPROVED BY

DATE

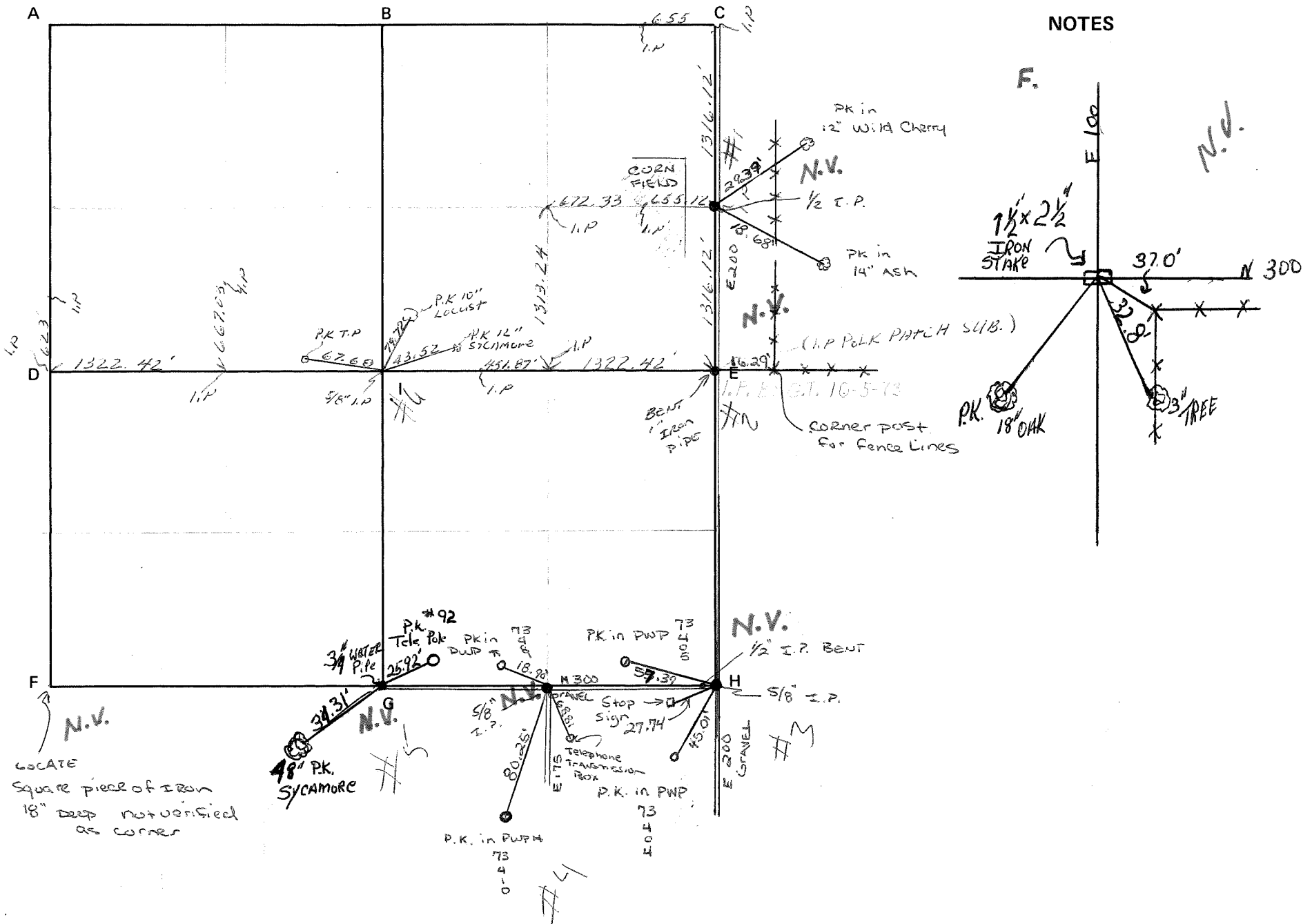
REFERENCED BY:

DATE

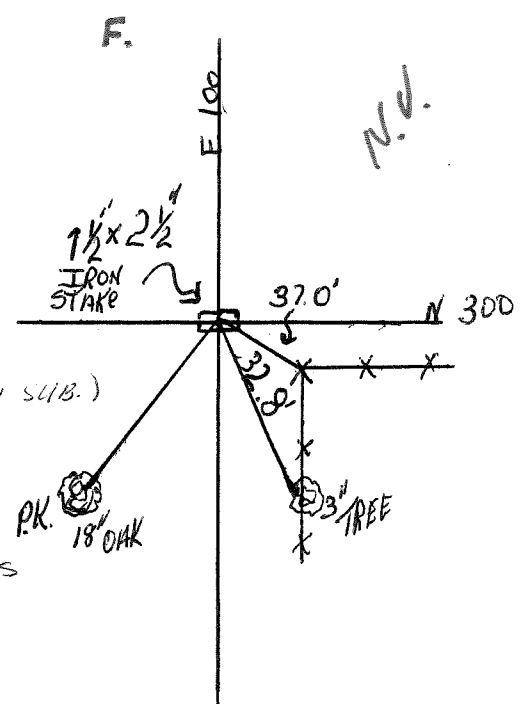
RALPH A. EASLEY JR

MAY 30 1974

CORNER CODE SYSTEM
Warrick County



NOTES



LOCATE
Square piece of IRON
18" deep not verified
as corner

CORNER RECORD
WARRICK COUNTY

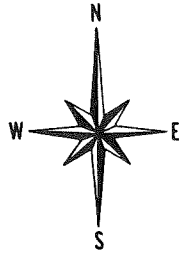
DESCRIPTION:

NE CORNER SE 1/4

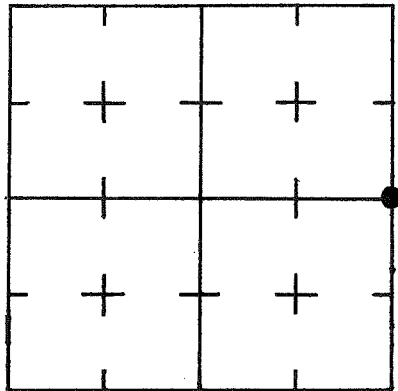
SECTION 18, T. 5 S. R. 7 W.

2nd PRINCIPAL MERIDIAN

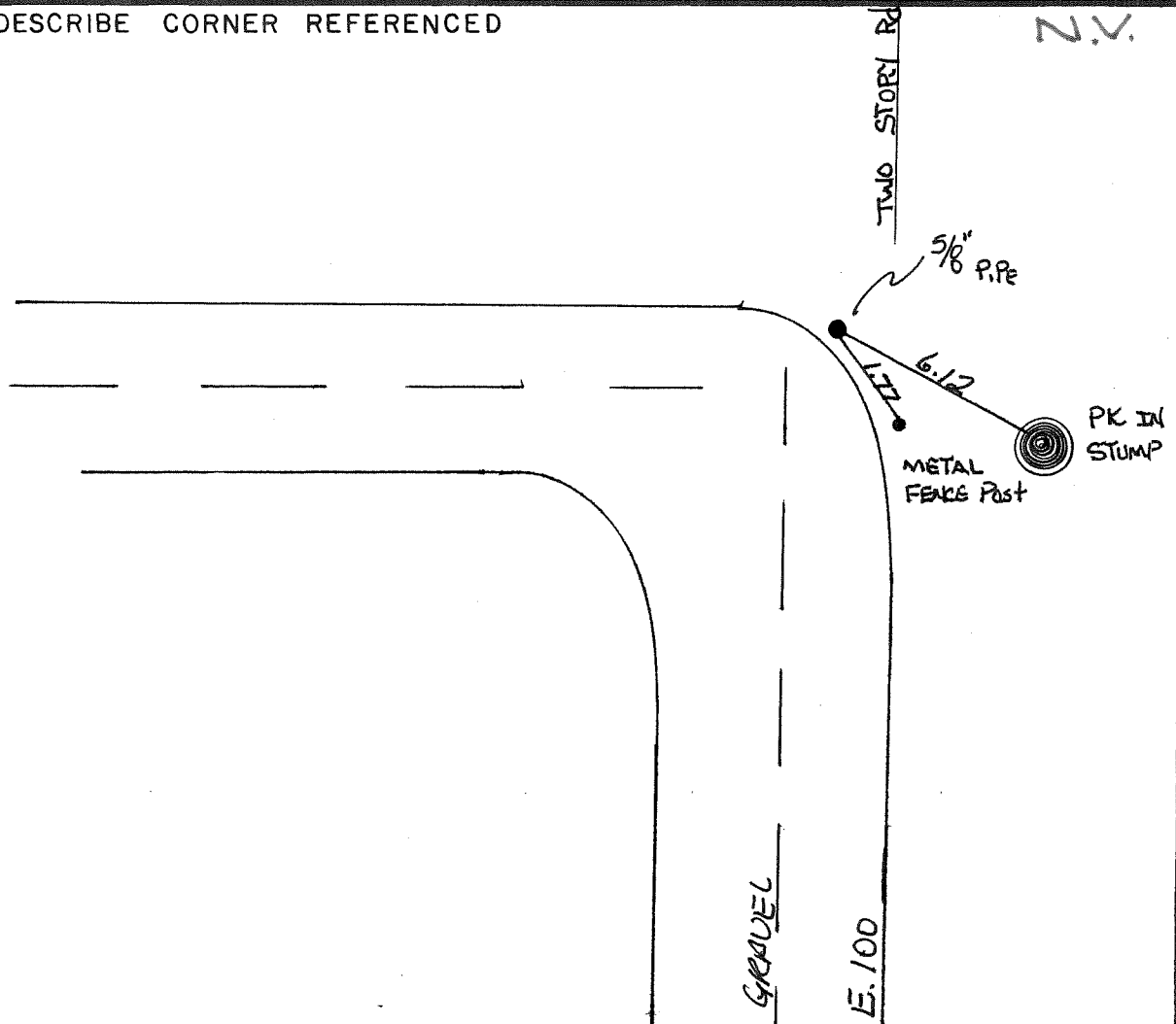
WARRICK COUNTY SURVEYOR
MICHAEL F. FELDBUSCH, L.S.



INDICATE CORNER REFERENCED



DESCRIBE CORNER REFERENCED



STATE PLANE COORDINATE DATA

INDIANA ZONE: WEST

X _____

Y _____

ESTABLISHED BY:

APPROVED BY

DATE

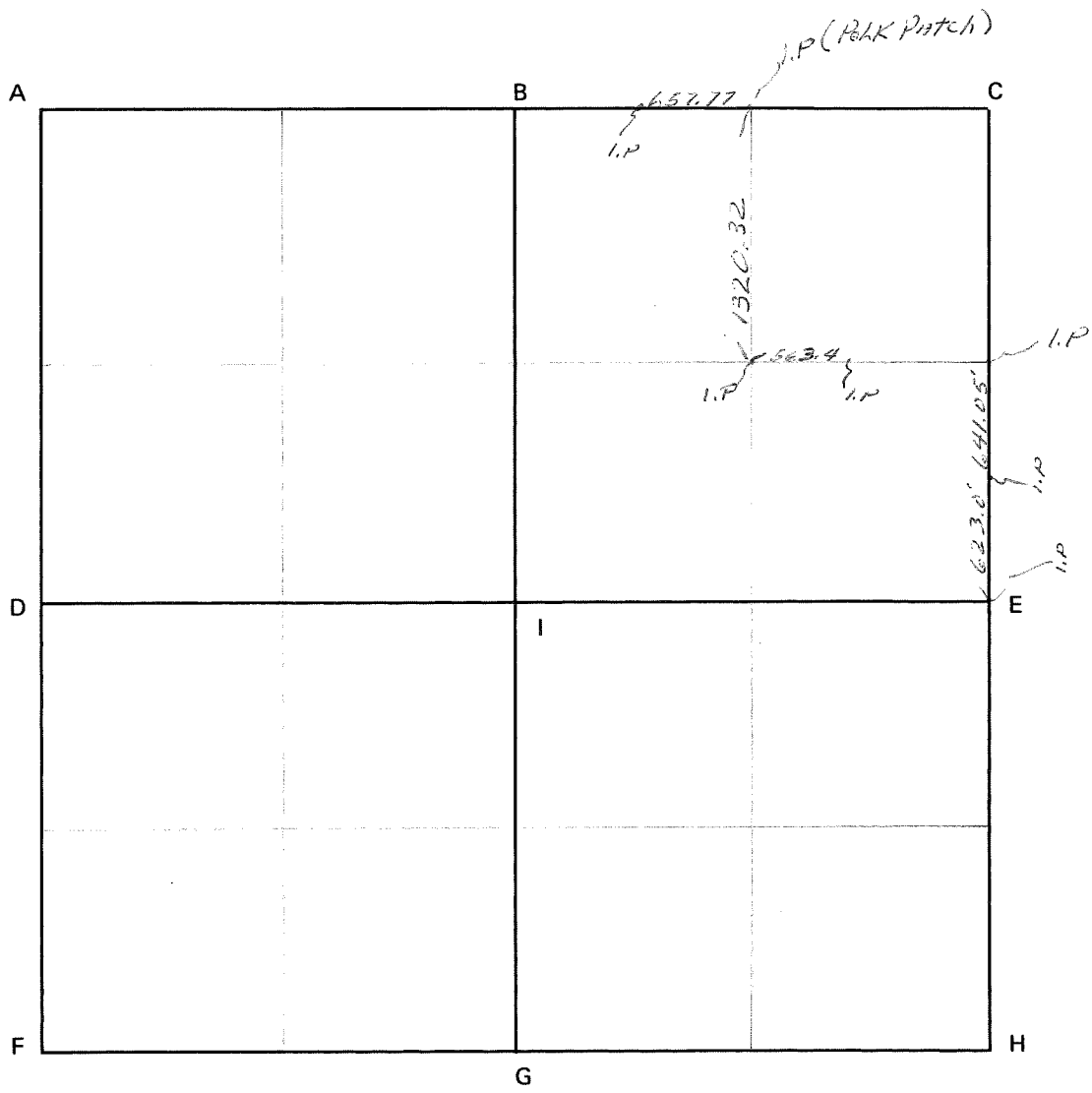
REFERENCED BY:

DATE

Lang Beck

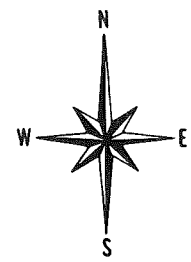
4-21-83

CORNER CODE SYSTEM
Warrick County



NOTES

CORNER RECORD
WARRICK COUNTY



DESCRIPTION:

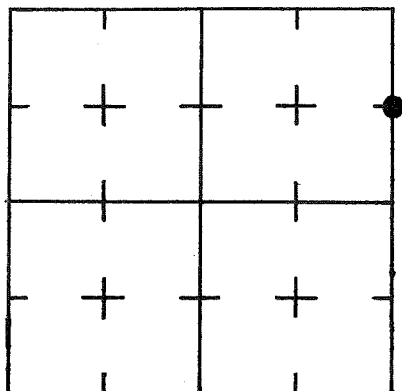
SE CORNER NE 1/4 NE 1/4

SECTION 19, T. 5 S. R. 7 W.

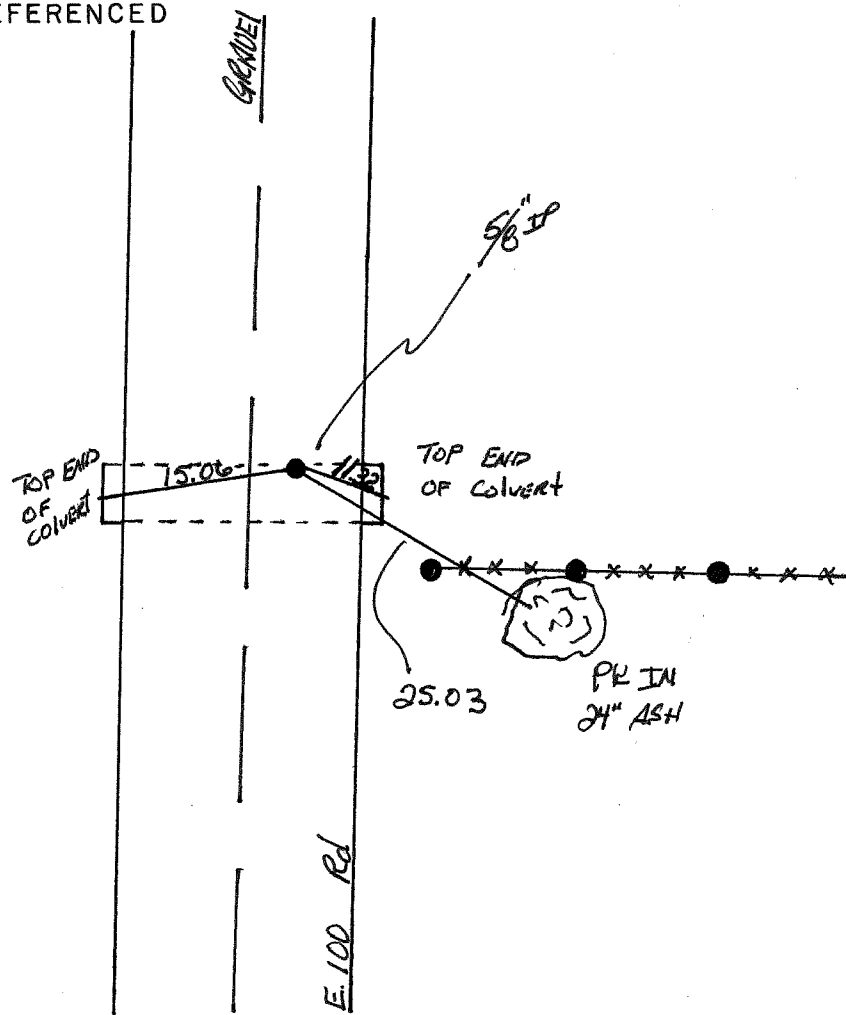
2nd PRINCIPAL MERIDIAN

WARRICK COUNTY SURVEYOR
MICHAEL F. FELDBUSCH, L.S.

INDICATE CORNER REFERENCED



DESCRIBE CORNER REFERENCED



STATE PLANE COORDINATE DATA

INDIANA ZONE: WEST

X _____

Y _____

ESTABLISHED BY:

APPROVED BY

DATE

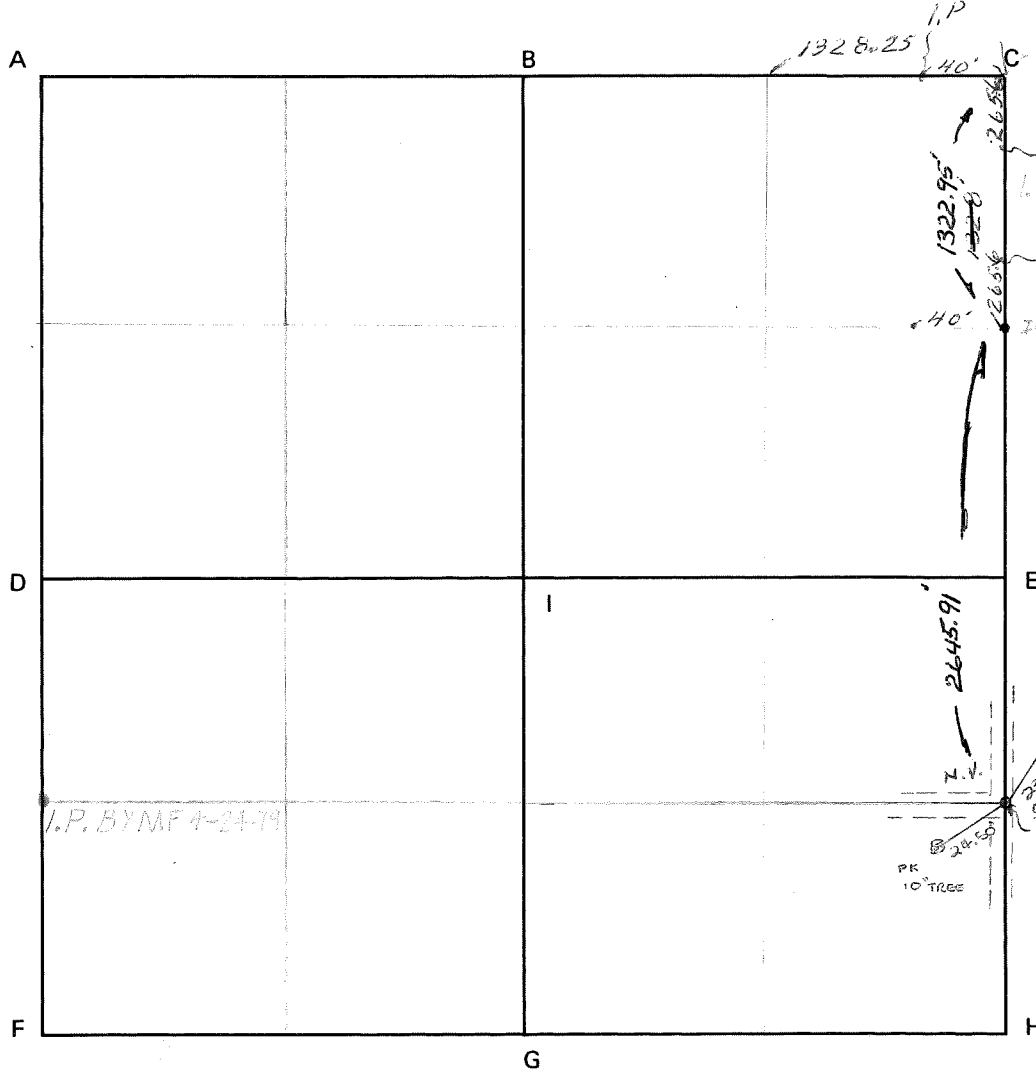
REFERENCED BY:

DATE

Long Beck

4-21-83

CORNER CODE SYSTEM
Warrick County



NOTES

(SEE SEC. 20-5-7)

5/8 REBAR
w/ FLANGING
3\"/>

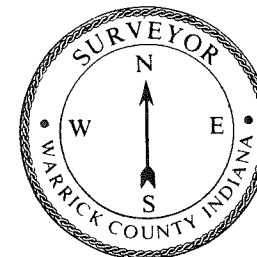
RECORD OF SECTION CORNERS

Warrick County

Section 19 Township 5 South Range 7 West 2nd Principle Meridian

| Date | Cor | Location | Description of | | Distance from Corner | Bearing from Corner (North Assumed) | Cond | Check By | Remarks |
|---------|-----|----------|----------------|-----------|----------------------|-------------------------------------|------|----------|-----------------|
| | | | Monument | Reference | | | | | |
| 4/16/53 | | | iron pin | | | | | | George Reynolds |

**CORNER RECORD
WARRICK COUNTY**



DESCRIPTION :

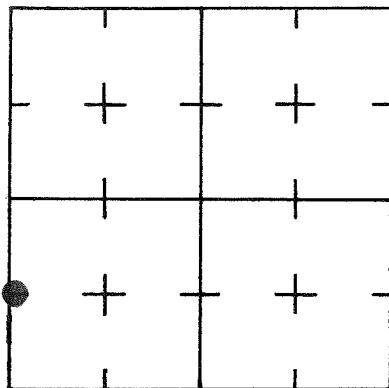
SW CORNER NW 1/4 SW 1/4

SECTION 19, T. 5 S. R. 7 W.

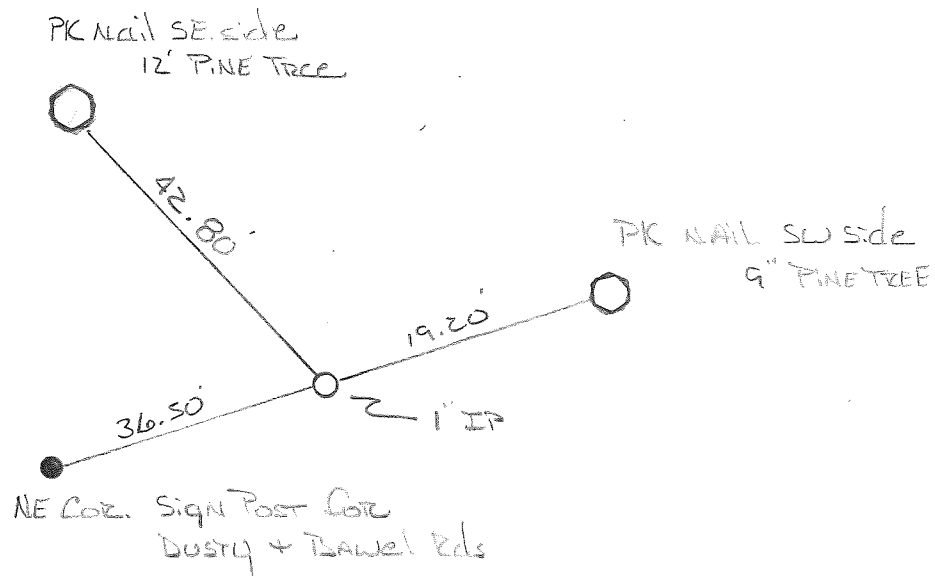
2nd PRINCIPLE MERIDIAN

**WARRICK COUNTY SURVEYOR
MICHAEL IRVIN**

INDICATE CORNER REFERENCED



DESCRIBE CORNER REFERENCED



STATE PLANE COORDINATE DATA

INDIANA ZONE: WEST

X _____

Y _____

ESTABLISHED BY:

APPROVED BY

DATE

REFERENCED BY:

DATE

William Irvin

9/8/93

CORNER RECORD
WARRICK COUNTY

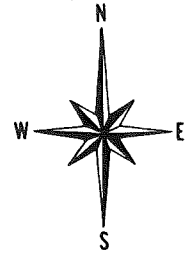
DESCRIPTION:

~~NEW~~ CORNER SW 1/4 SW 1/4

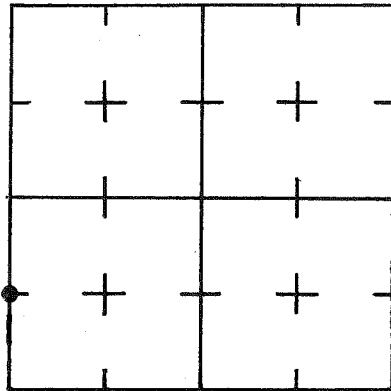
SECTION 19, T. 5 S. R. 7 W.

2nd PRINCIPAL MERIDIAN

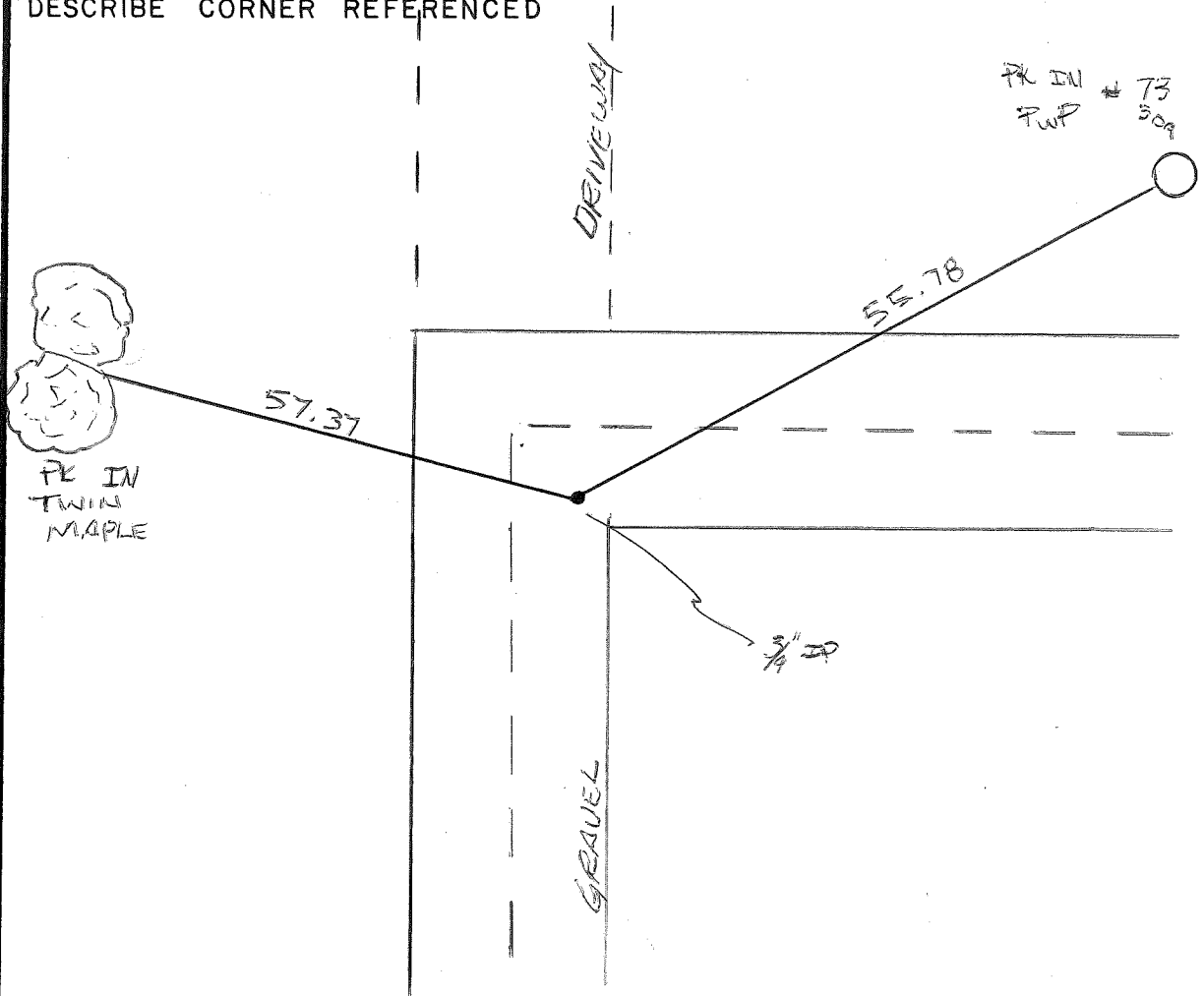
WARRICK COUNTY SURVEYOR
MICHAEL F. FELDBUSCH, L.S.



INDICATE CORNER REFERENCED



DESCRIBE CORNER REFERENCED



STATE PLANE COORDINATE DATA

INDIANA ZONE: WEST

X _____

Y _____

ESTABLISHED BY:

APPROVED BY

MIKE FELDBUSCH L.S. 0459

DATE

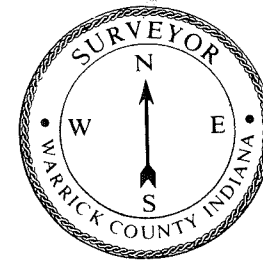
REFERENCED BY:

Jay Beck

DATE

8-18-84

CORNER RECORD
WARRICK COUNTY



DESCRIPTION:

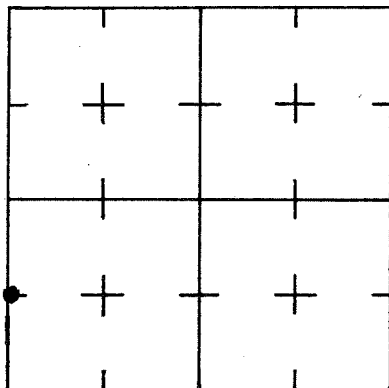
SW CORNER NW 1/4 SW 1/4

SECTION 19, T. 5 S. R. 7 W.

2nd PRINCIPLE MERIDIAN

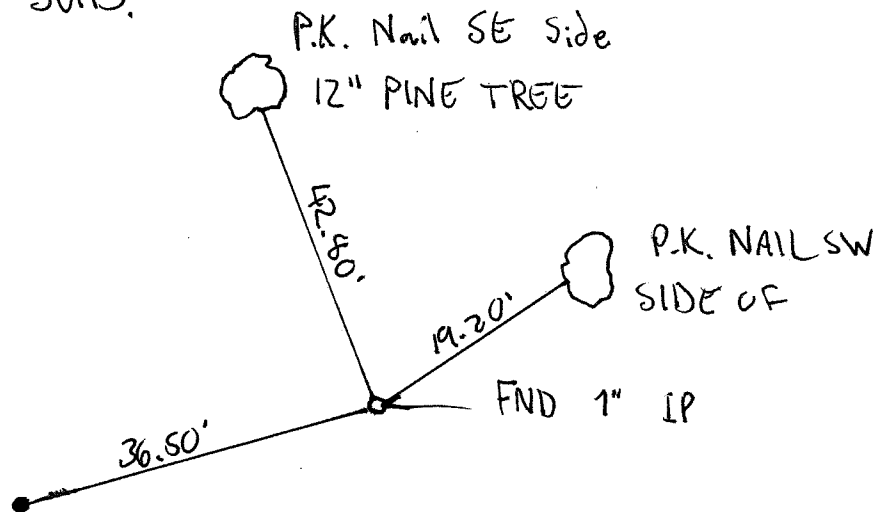
WARRICK COUNTY SURVEYOR
KARAN HARGRAVE-BARNHILL

INDICATE CORNER REFERENCED



DESCRIBE CORNER REFERENCED

GROSSMAN SUB.



STATE PLANE COORDINATE DATA

INDIANA ZONE: WEST

X _____

Y _____

ESTABLISHED BY:

APPROVED BY

DATE

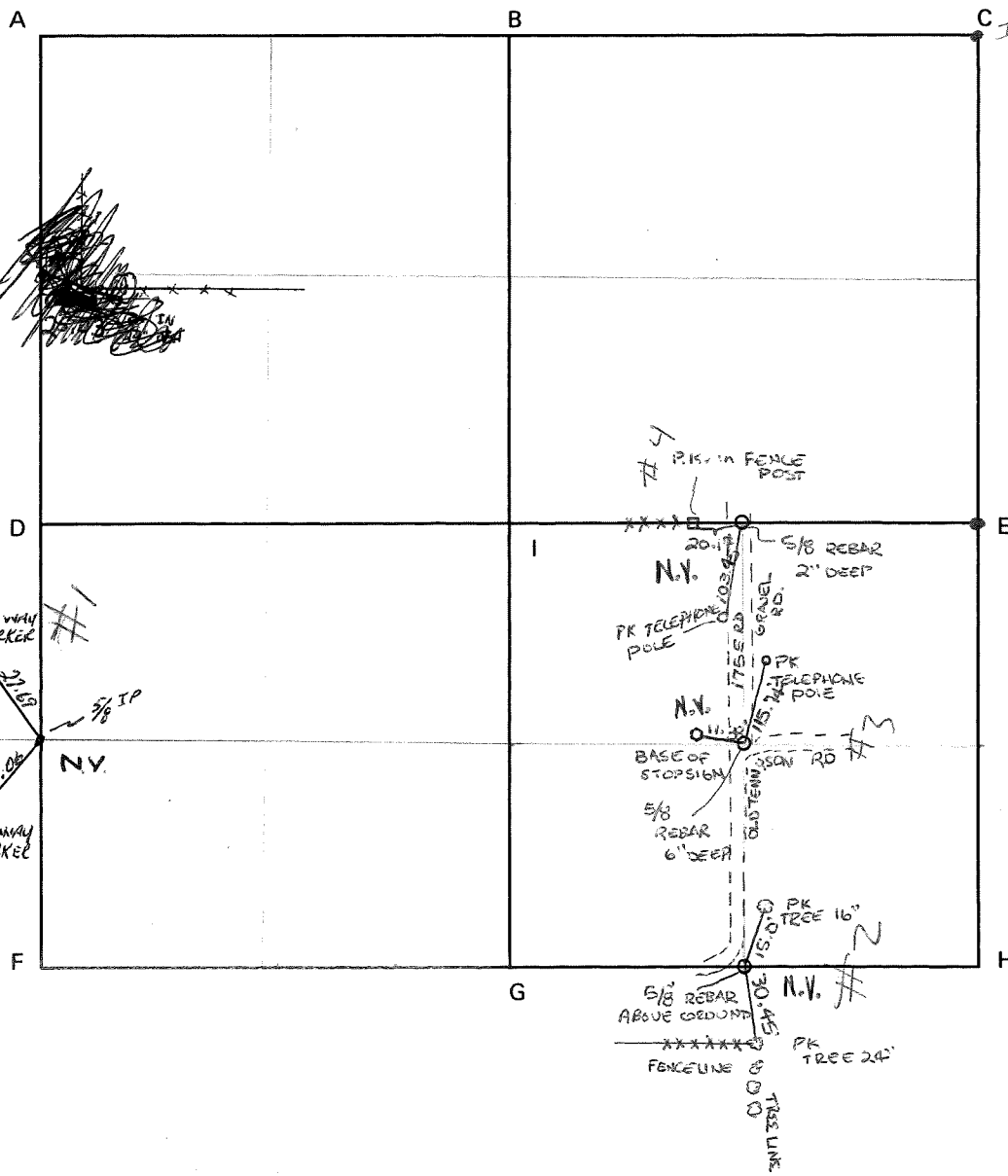
REFERENCED BY:

DATE

WILLIAM Y. BIVINS

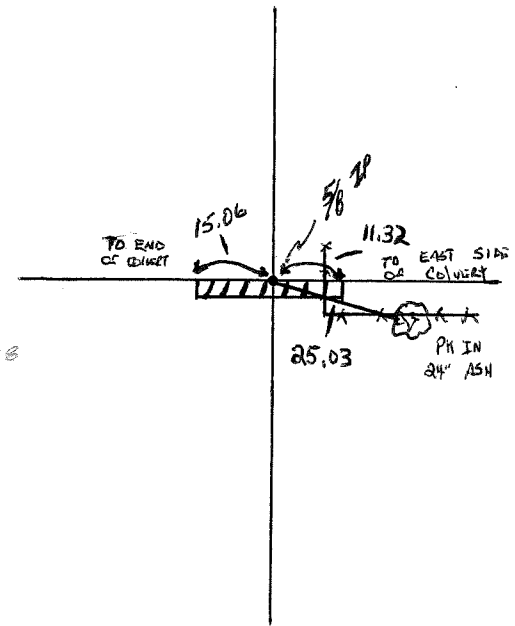
JAN 4, 1993

CORNER CODE SYSTEM
Warrick County

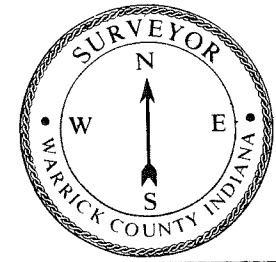


NOTES

NW 1/4 NW 1/4 SW Cor.



CORNER RECORD
WARRICK COUNTY



DESCRIPTION: CENTER OF SECTION

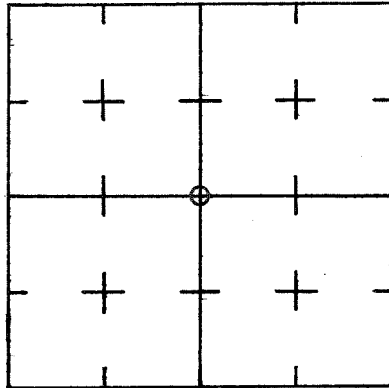
_____ CORNER _____

SECTION 21, T. 5 S. R. 7 W.

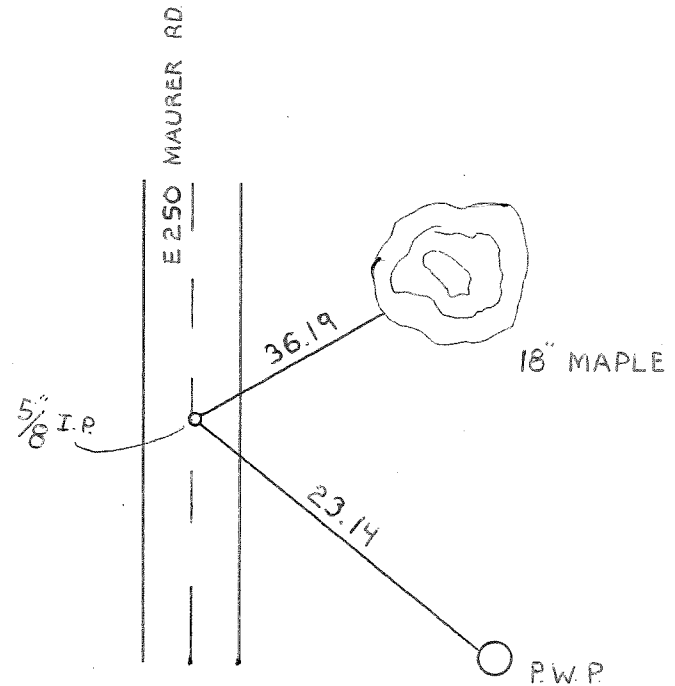
2nd PRINCIPLE MERIDIAN

WARRICK COUNTY SURVEYOR
MICHAEL IRVIN

INDICATE CORNER REFERENCED



DESCRIBE CORNER REFERENCED



STATE PLANE COORDINATE DATA

INDIANA ZONE: WEST

X _____

Y _____

ESTABLISHED BY:

APPROVED BY

DATE

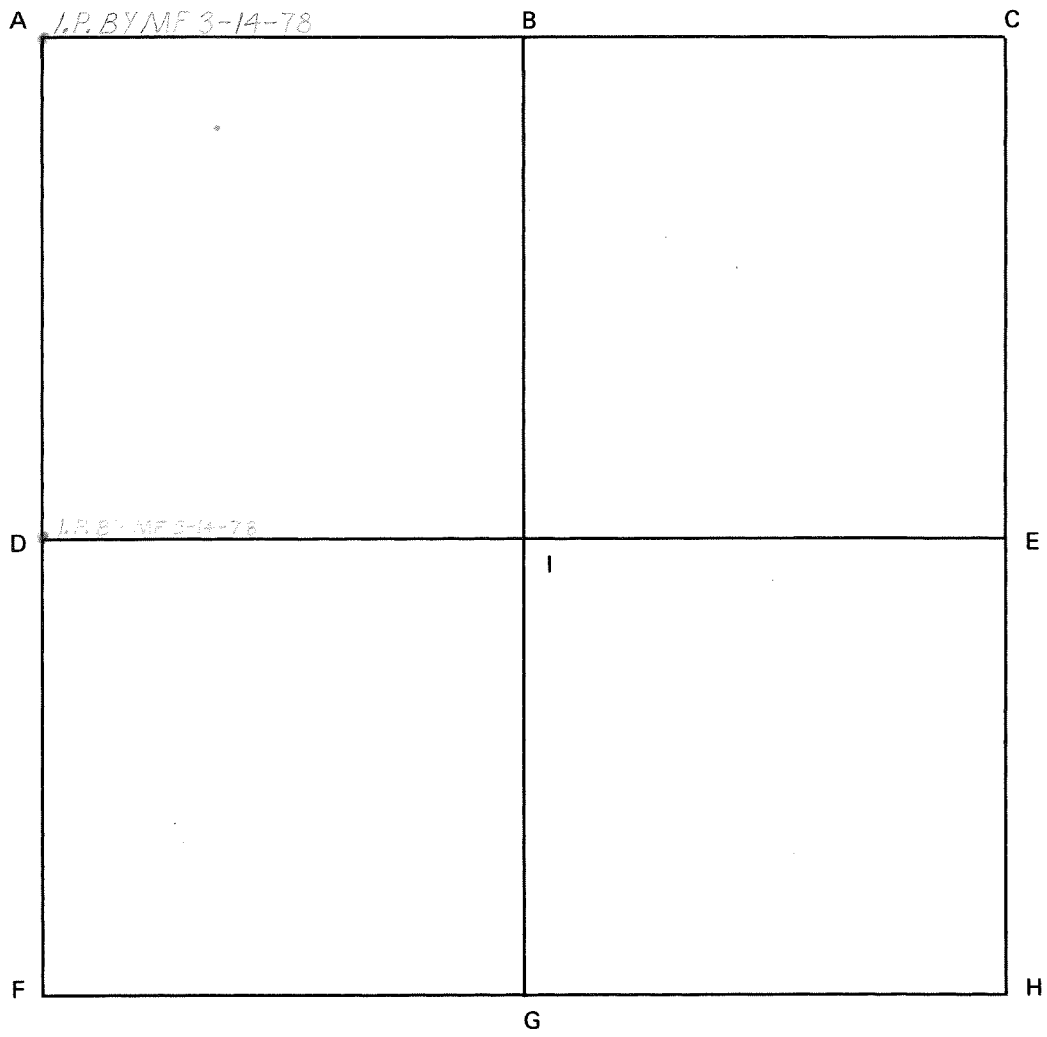
REFERENCED BY:

G.B.

DATE

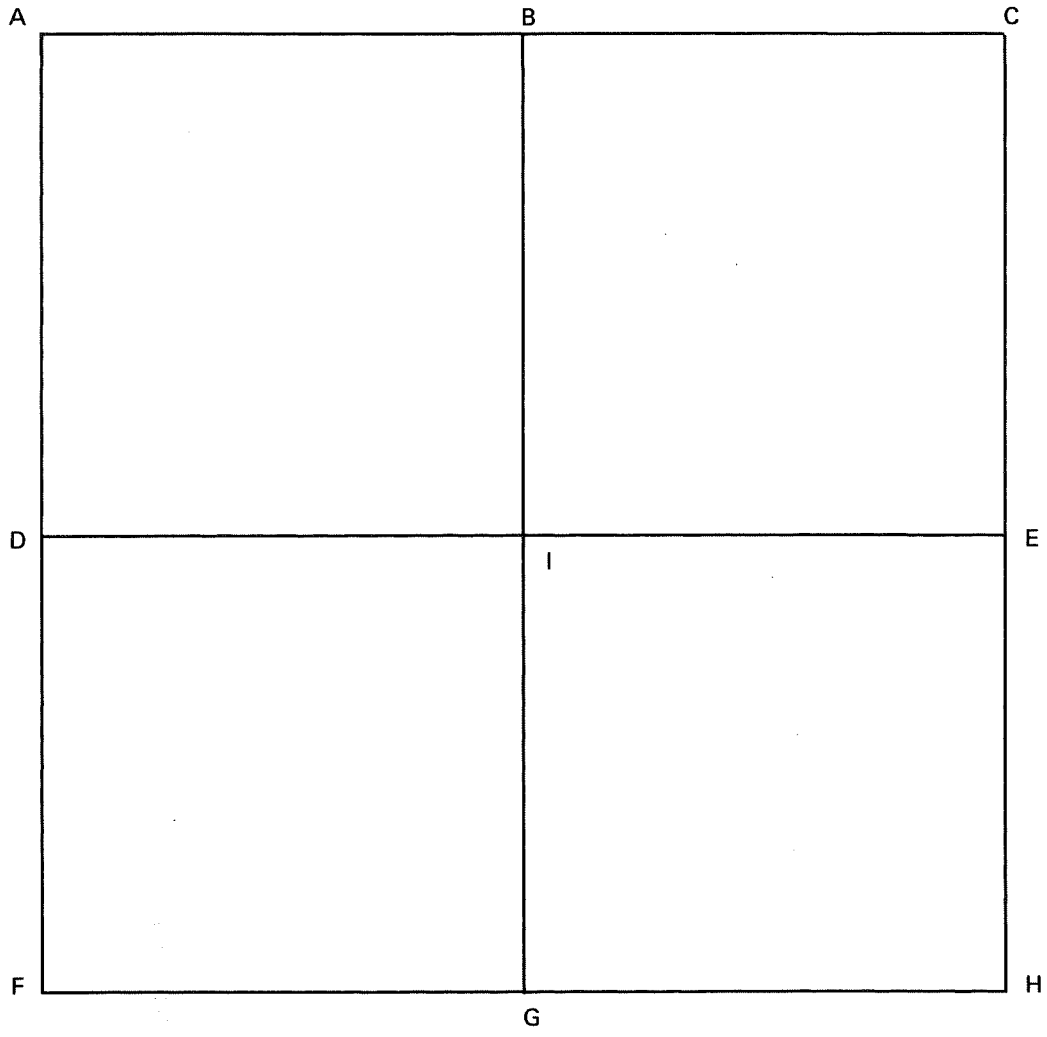
10-9-84

CORNER CODE SYSTEM
Warrick County



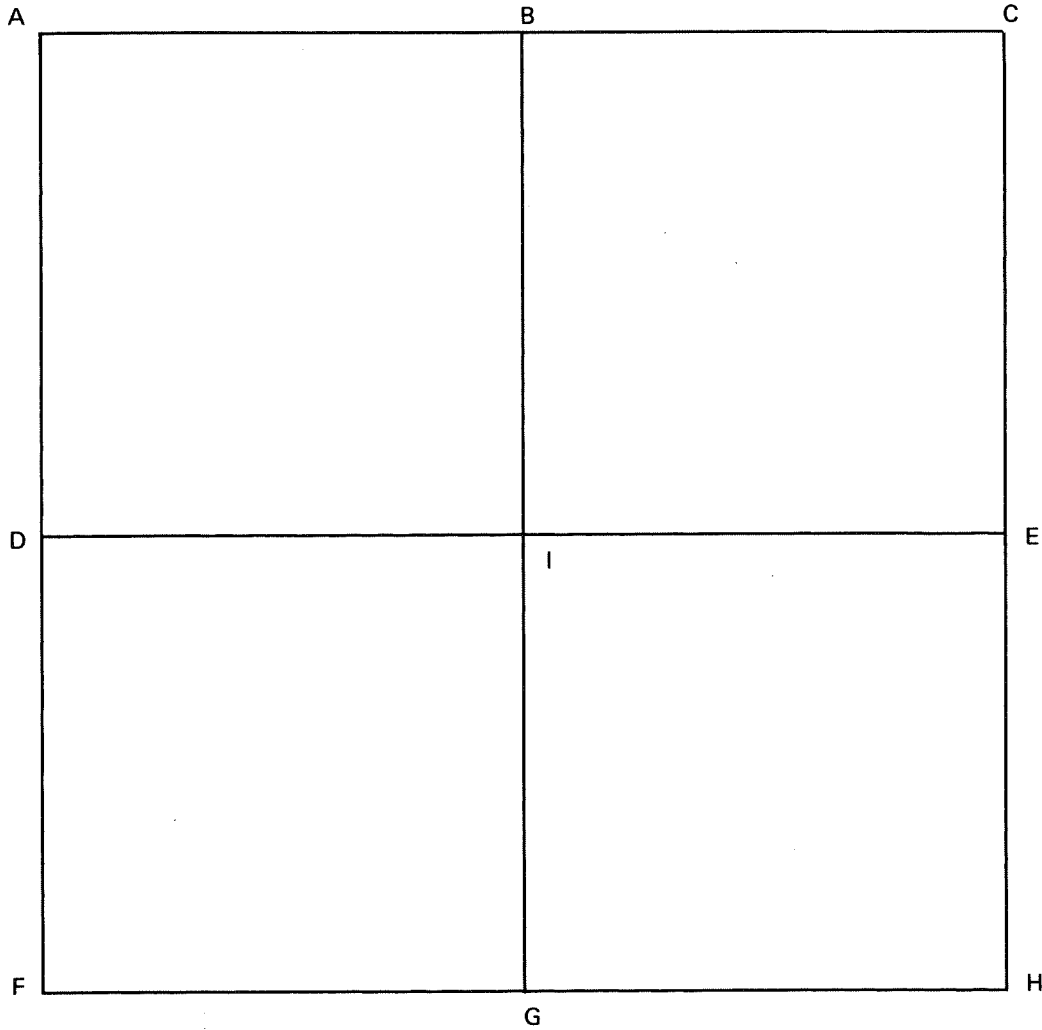
NOTES

CORNER CODE SYSTEM
Warrick County



NOTES

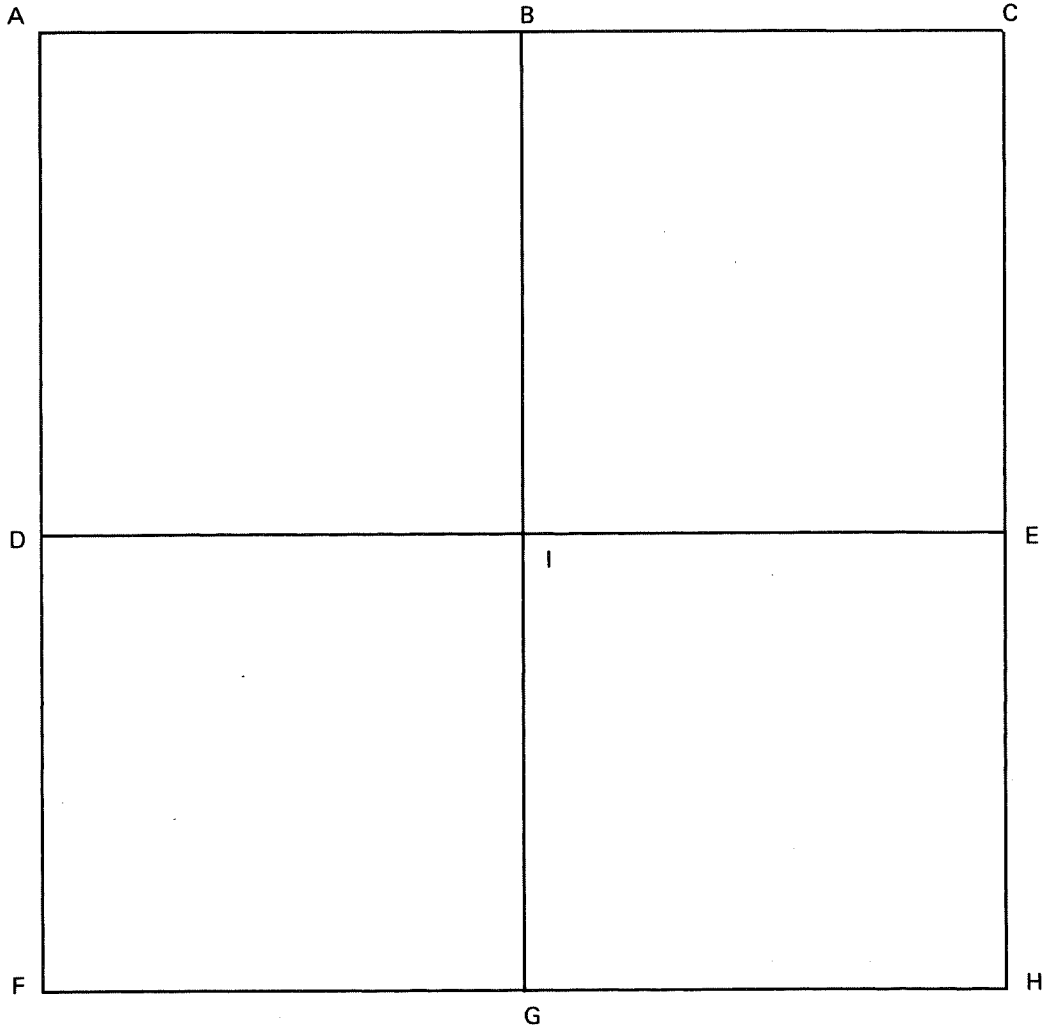
CORNER CODE SYSTEM
Warrick County



NOTES

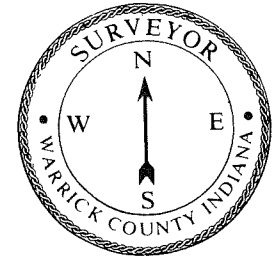
Section 24 Township 5 South Range 7 West 2nd P

CORNER CODE SYSTEM
Warrick County



NOTES

CORNER RECORD
WARRICK COUNTY



DESCRIPTION:

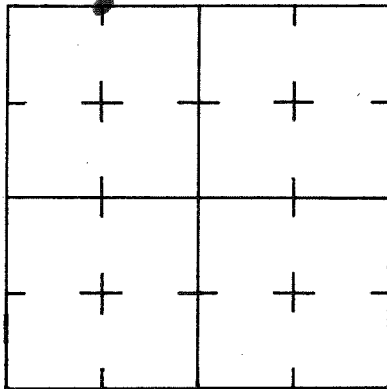
NE CORNER NW/4 NW/4

SECTION 25, T. 5 S. R. 7 W.

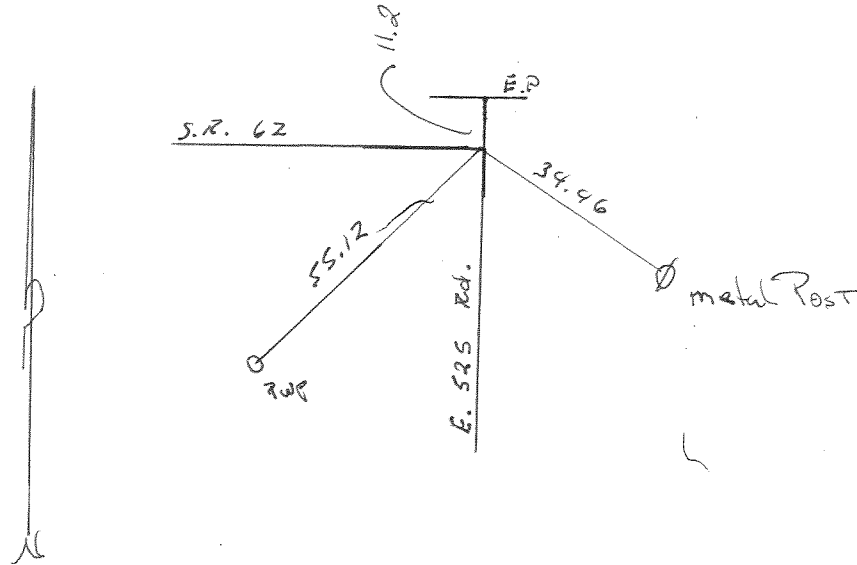
2nd PRINCIPLE MERIDIAN

WARRICK COUNTY SURVEYOR
KARAN HARGRAVE-BARNHILL

INDICATE CORNER REFERENCED



DESCRIBE CORNER REFERENCED



STATE PLANE COORDINATE DATA

INDIANA ZONE: WEST

X _____

Y _____

ESTABLISHED BY:

APPROVED BY

DATE

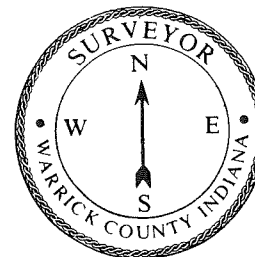
REFERENCED BY:

Dockery

DATE

Jun 20 1982

CORNER RECORD
WARRICK COUNTY



DESCRIPTION:

NE CORNER NW/4 NW/4

SECTION 25, T. S S. R. 7 W.

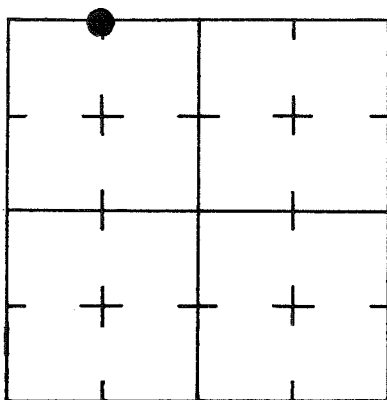
2nd PRINCIPLE MERIDIAN

Borden Sub

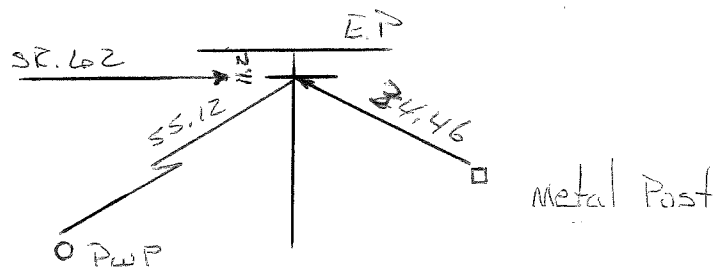
WARRICK COUNTY SURVEYOR

MICHAEL IRVIN

INDICATE CORNER REFERENCED



DESCRIBE CORNER REFERENCED



STATE PLANE COORDINATE DATA

INDIANA ZONE: WEST

X _____

Y _____

ESTABLISHED BY:

APPROVED BY

DATE

REFERENCED BY:

DATE

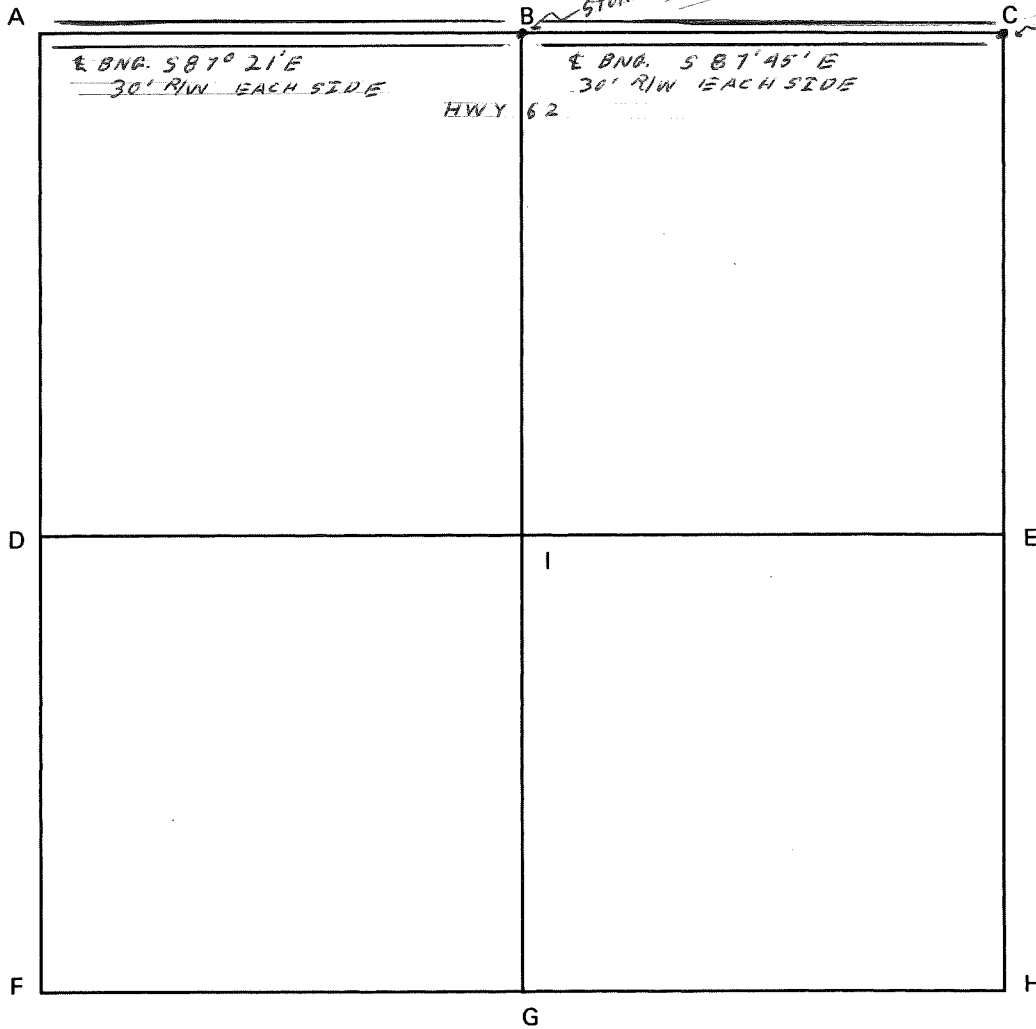
Elmo D Dockery

July 14, 1982

CORNER CODE SYSTEM
Warrick County

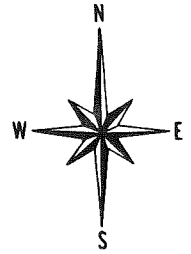
STONE REPLACED WITH
MONUMENT

STONE REPLACED WITH
MONUMENT



NOTES

**CORNER RECORD
WARRICK COUNTY**



DESCRIPTION:

NE CORNER NW¹/₄ SW¹/₄

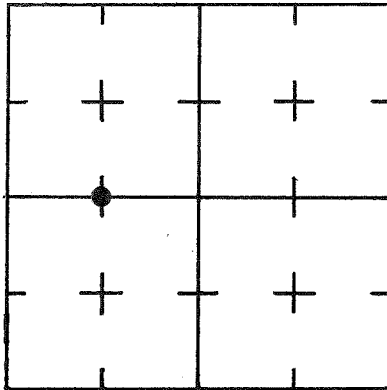
SECTION 26, T. 5 S.

R. 7 W.

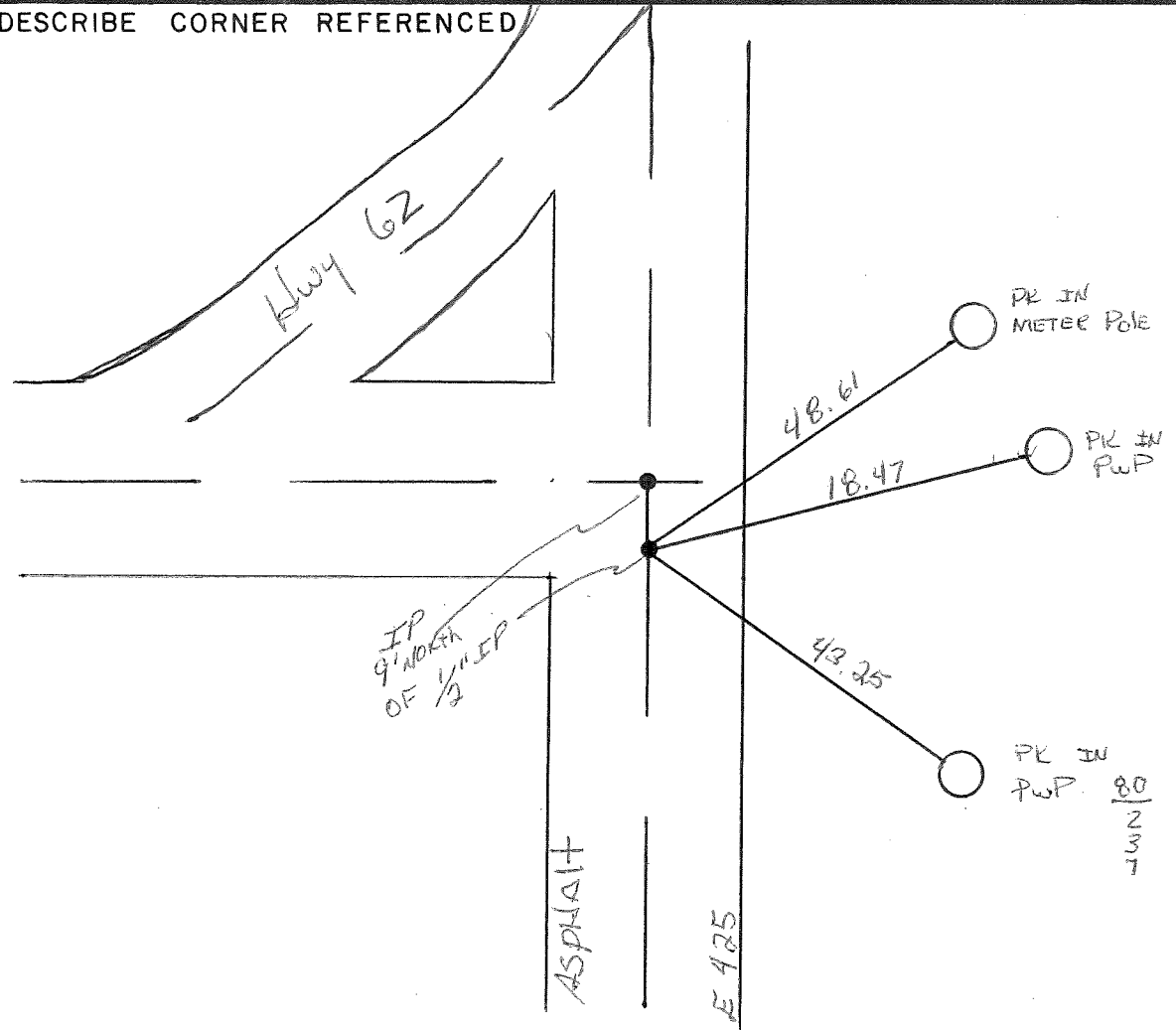
2nd PRINCIPAL MERIDIAN

**WARRICK COUNTY SURVEYOR
MICHAEL F. FELDBUSCH, L.S.**

INDICATE CORNER REFERENCED



DESCRIBE CORNER REFERENCED



STATE PLANE COORDINATE DATA

INDIANA ZONE: WEST

X _____

Y _____

ESTABLISHED BY:

APPROVED BY

MIKE FELDBUSCH L.S.

DATE

REFERENCED BY:

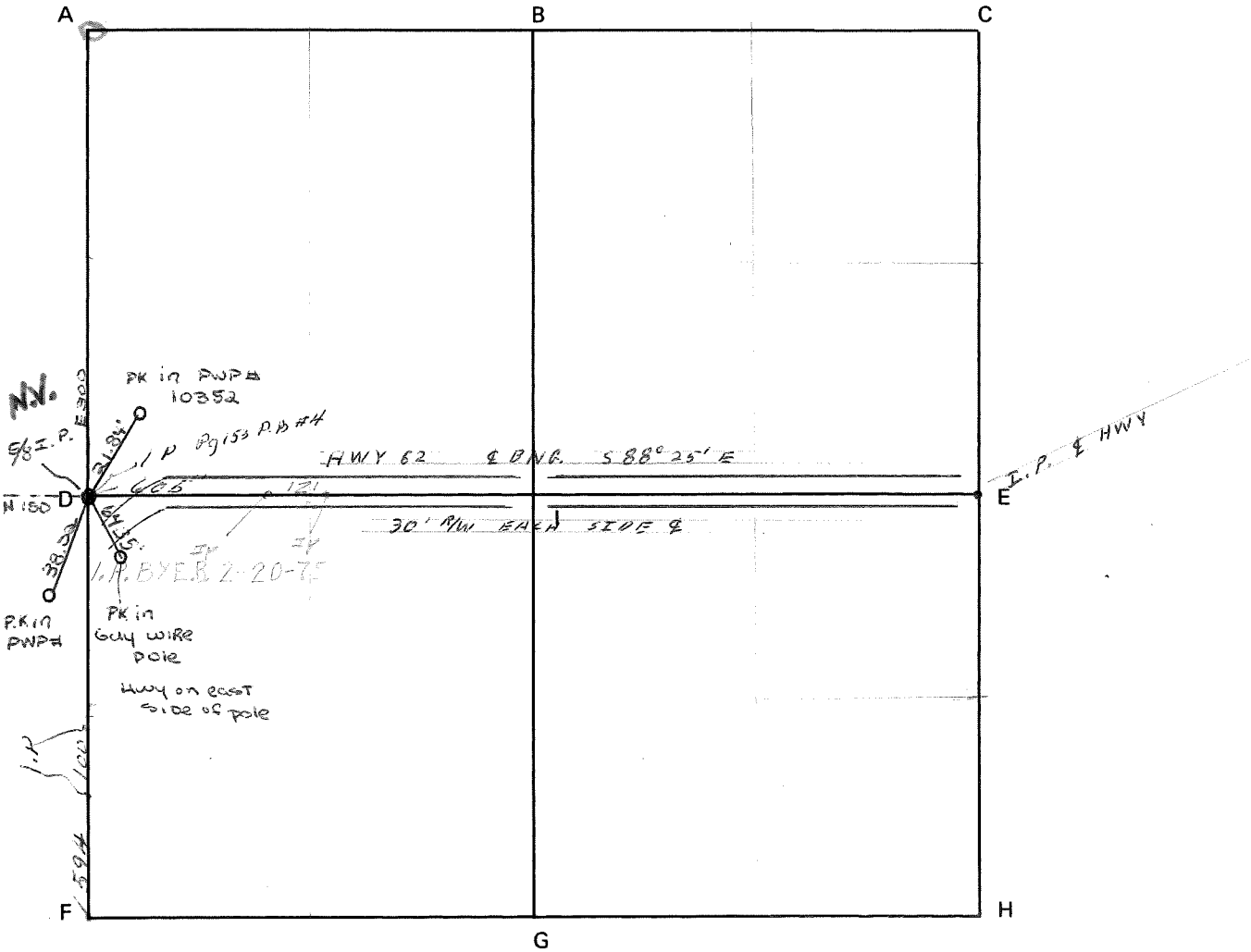
Lay Beck

DATE

3/23/84

CORNER CODE SYSTEM
Warrick County

NOTES

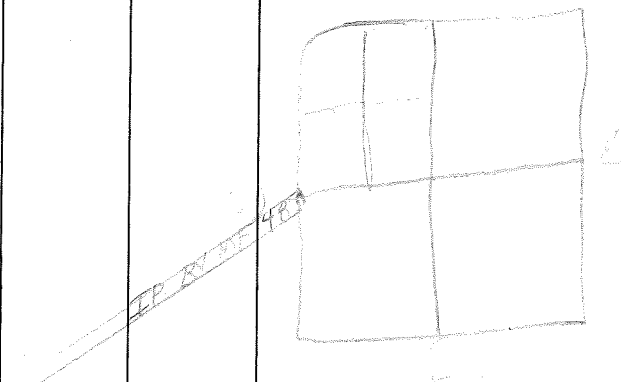


RECORD OF SECTION CORNERS

Warrick County

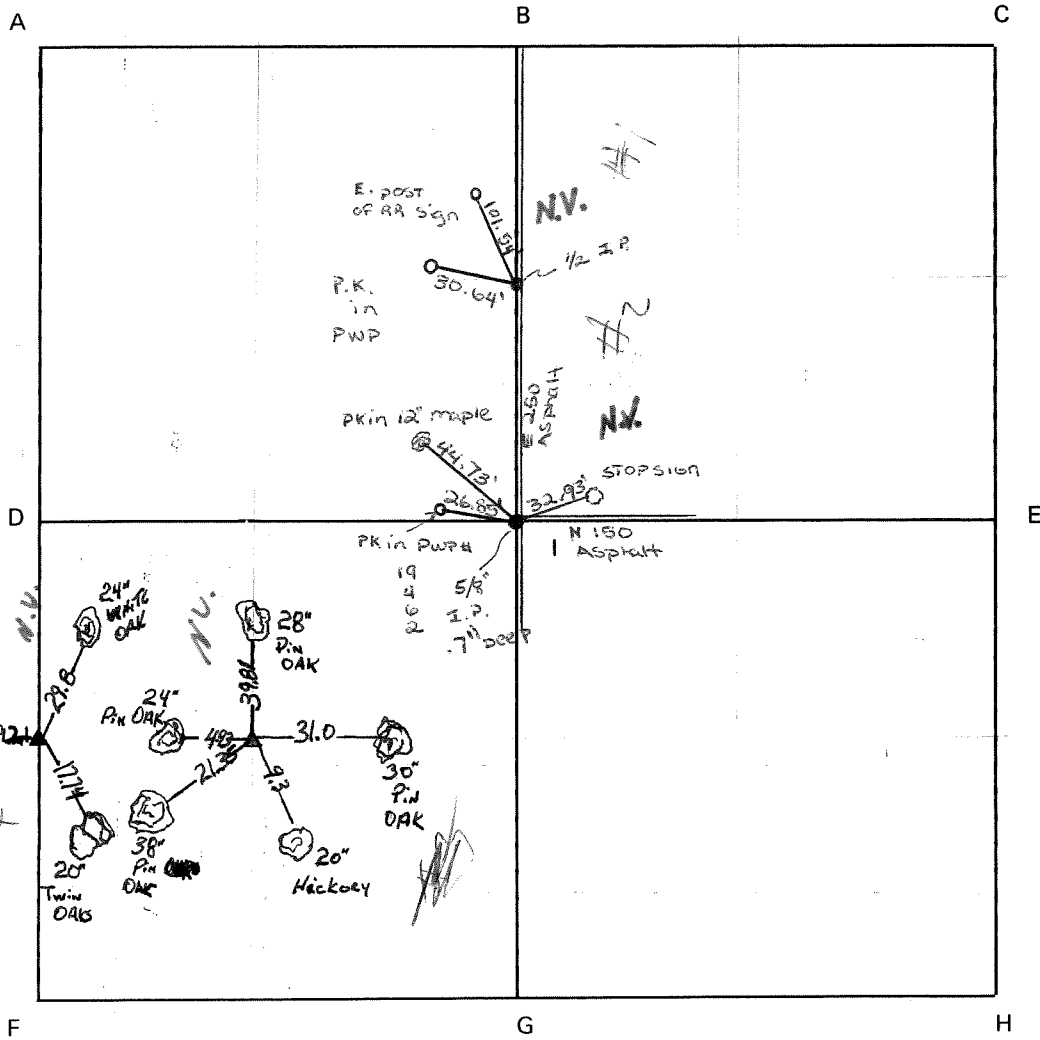
tion 27 27 Township SS 5 South Range 7^W West 2nd Principle Meridian

| Date | Cor | Location | Description of | | Distance from Corner | Bearing from Corner (North Assumed) | Cond | Check By | Remarks |
|--------|-----|----------|----------------|-----------|----------------------|-------------------------------------|------|----------|-----------------|
| | | | Monument | Reference | | | | | |
| 7/1/54 | | | | | | | | | George Reynolds |



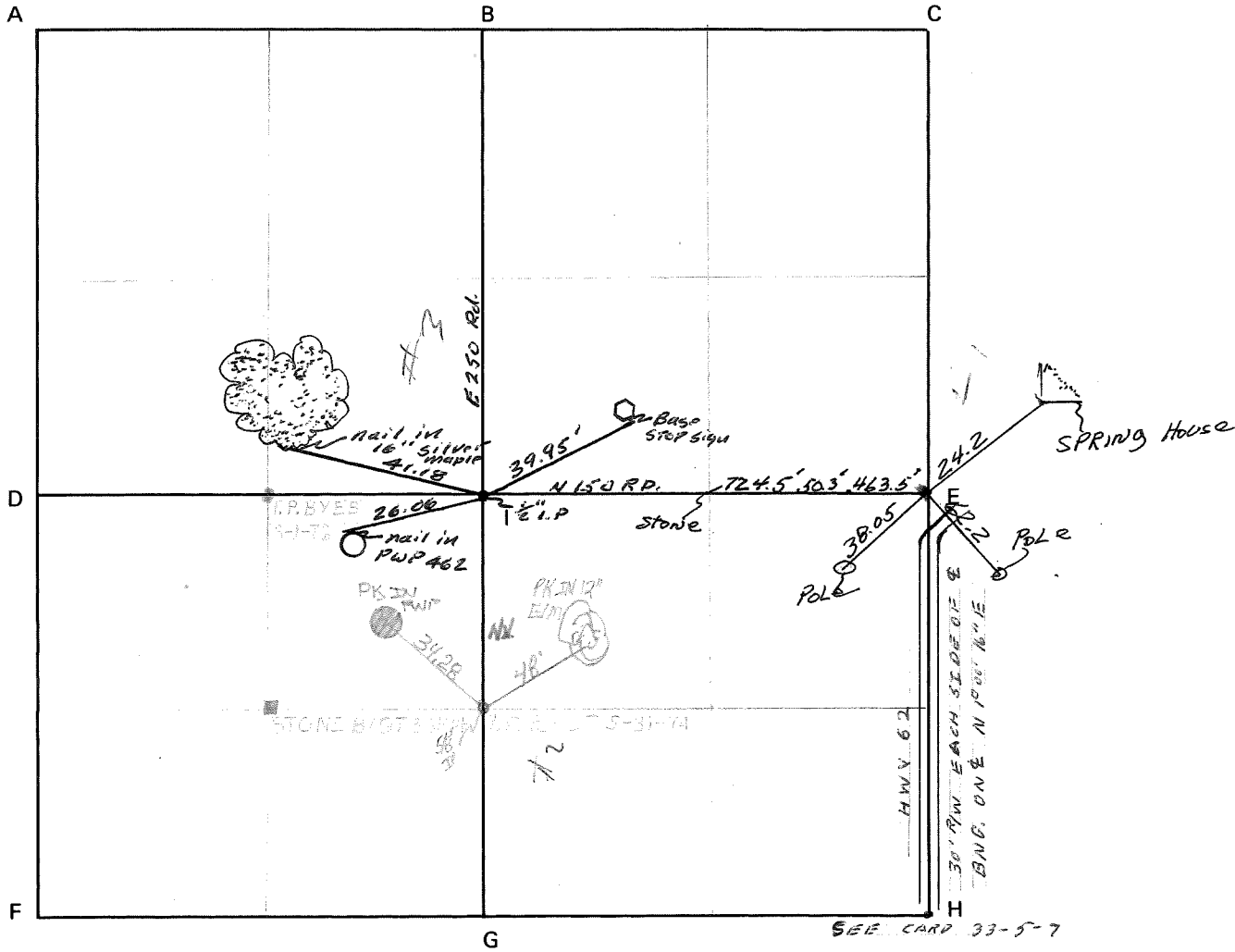
CORNER CODE SYSTEM
Warrick County

NOTES

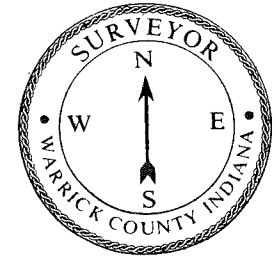


CORNER CODE SYSTEM
Warrick County

NOTES



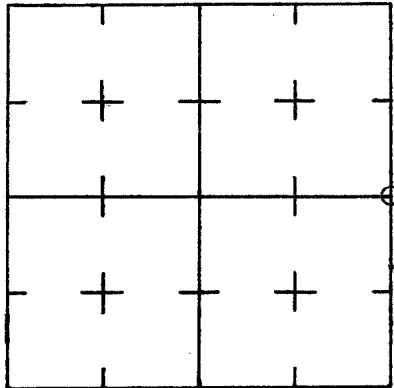
CORNER RECORD
WARRICK COUNTY



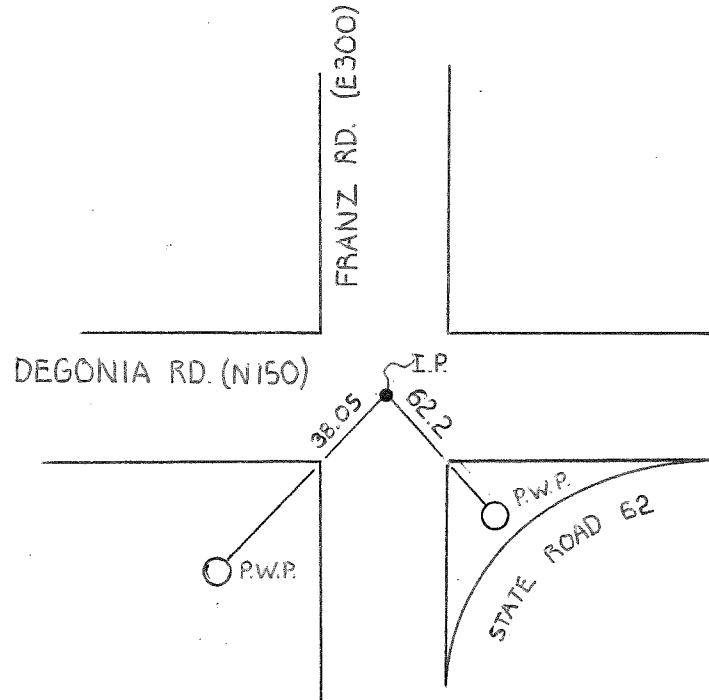
DESCRIPTION:
SE CORNER NE 1/4
SECTION 28, T. 5 S. R. 7 W.
2nd PRINCIPLE MERIDIAN

WARRICK COUNTY SURVEYOR
MICHAEL IRVIN

INDICATE CORNER REFERENCED



DESCRIBE CORNER REFERENCED



STATE PLANE COORDINATE DATA

INDIANA ZONE: WEST

X _____

Y _____

ESTABLISHED BY:

APPROVED BY

DATE
5-21-73

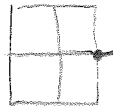
REFERENCED BY:

DATE

NW corner of SW $\frac{1}{4}$ + SW corner of the NW $\frac{1}{4}$ sec. 27-5-7
NE corner of SE $\frac{1}{4}$ + SE corner of NE $\frac{1}{4}$ sec. 28-5-7

000015

Type of Monument: I.P.



COR E

Date referenced: 5/21/73

referenced by: SWC



CORNER RECORD
WARRICK COUNTY

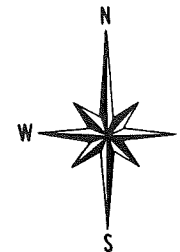
DESCRIPTION:

SE CORNER SE 1/4 NE 1/4

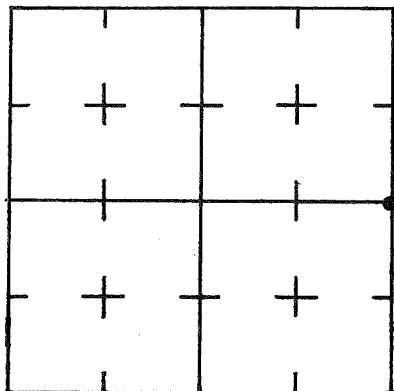
SECTION 28, T. 5 S. R. 7 W.

2nd PRINCIPAL MERIDIAN

WARRICK COUNTY SURVEYOR
MICHAEL F. FELDBUSCH, L.S.

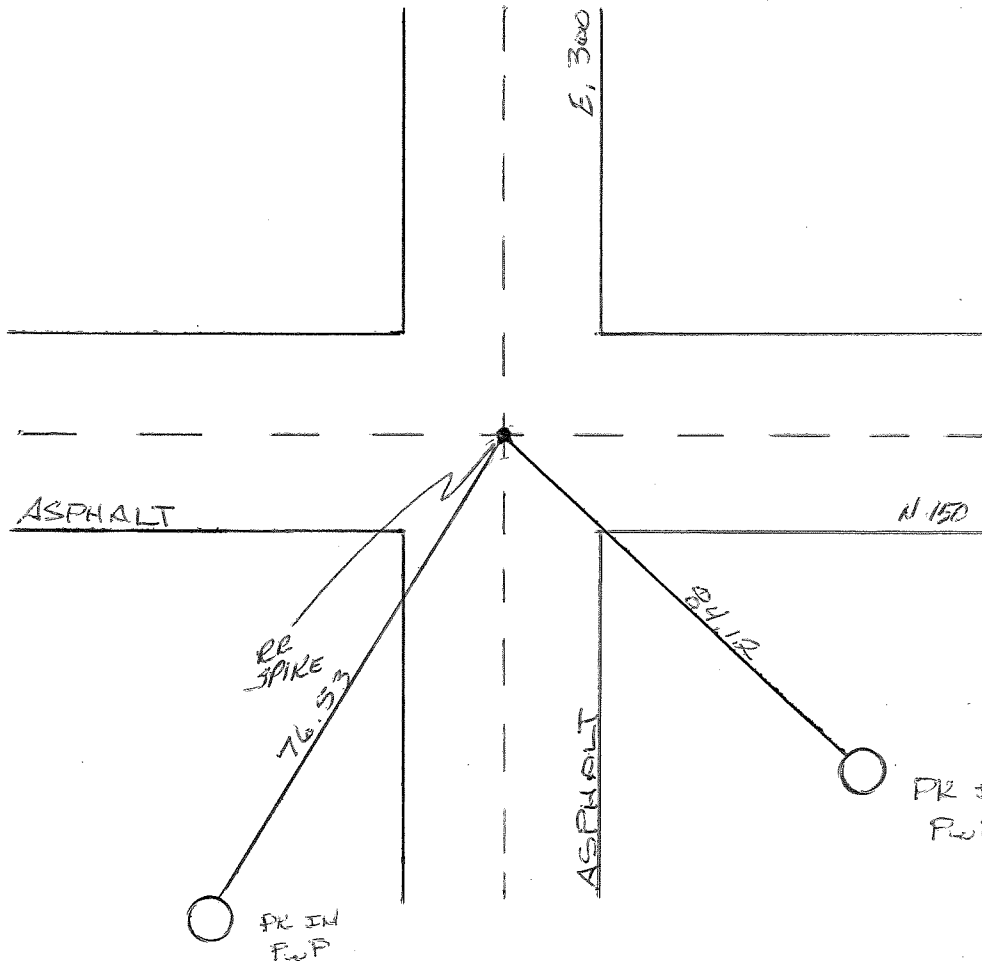


INDICATE CORNER REFERENCED



DESCRIBE CORNER REFERENCED

NOT VERIFIED



STATE PLANE COORDINATE DATA

INDIANA ZONE: WEST

X _____

Y _____

ESTABLISHED BY:

APPROVED BY

DATE

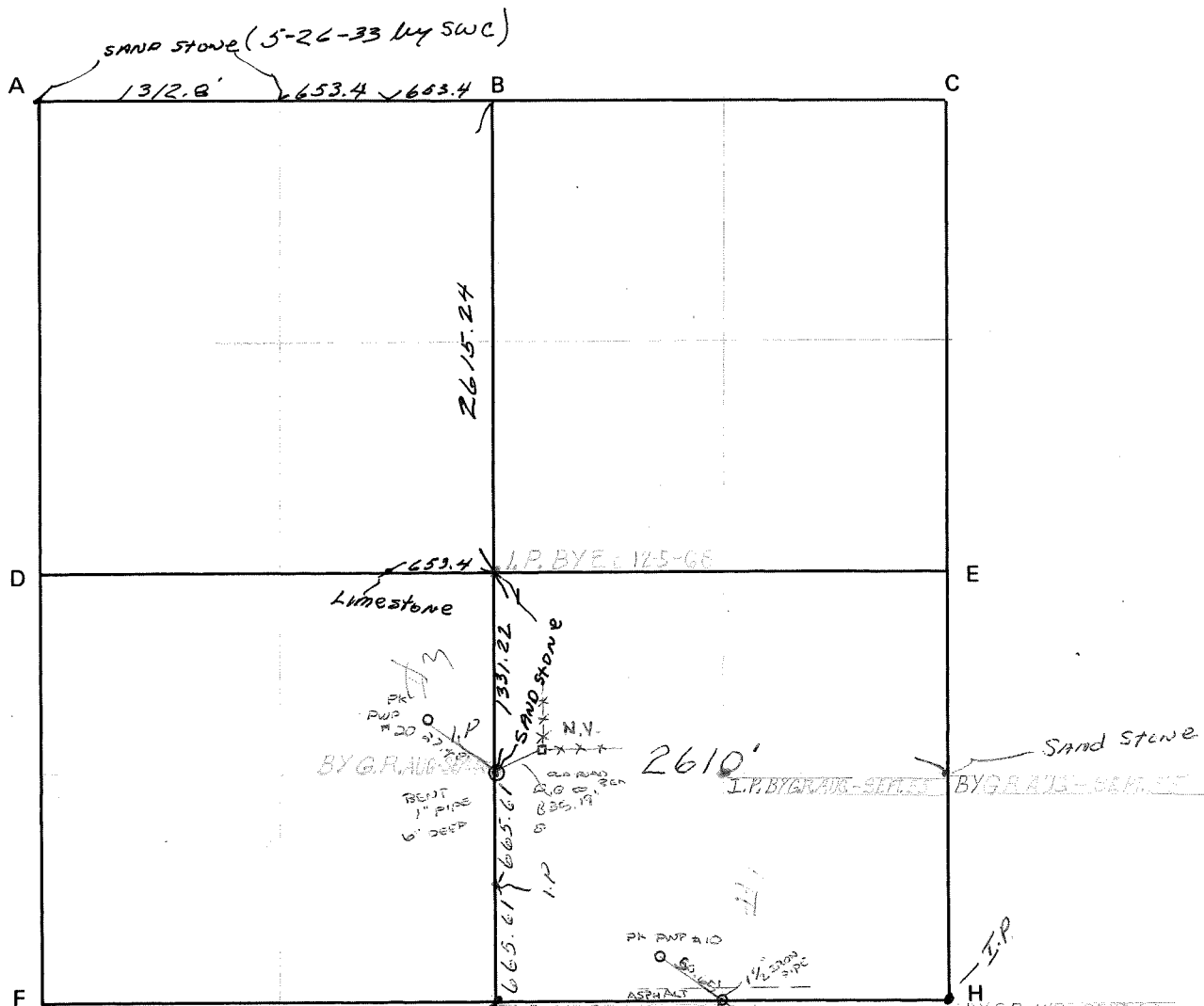
REFERENCED BY:

DATE

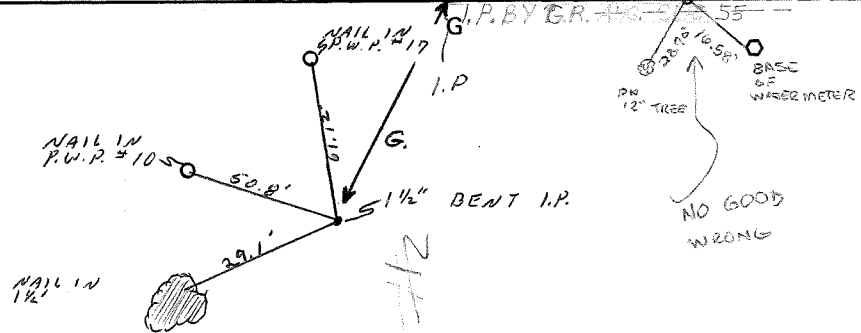
Hay Beck

8-27-84

CORNER CODE SYSTEM
Warrick County



NOTES



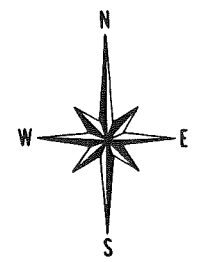
RECORD OF SECTION CORNERS

Warrick County

Section 29 Township 5 South Range 7 West 2nd Principle Meridian

| Date | Cor | Location | Description of | | Distance from Corner | Bearing from Corner (North Assumed) | Cond | Check By | Remarks |
|------|-----|------------------|----------------|------------------------------------|----------------------|-------------------------------------|------|----------|---------|
| | | | Monument | Reference | | | | | |
| | | ne cor. SE SE | old saw stone | | | | | | |
| | G | | Iron pin | 30' north 25" east of corner | | | | | |

CORNER RECORD
WARRICK COUNTY



DESCRIPTION:

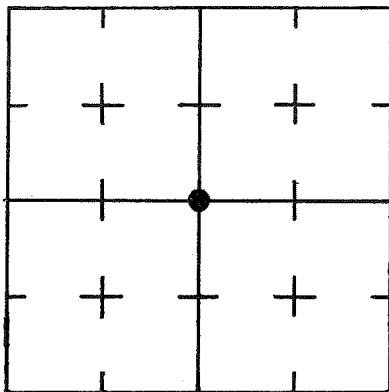
SW CORNER NE 1/4

SECTION 29, T. 5 S. R. 7 W.

2nd PRINCIPAL MERIDIAN

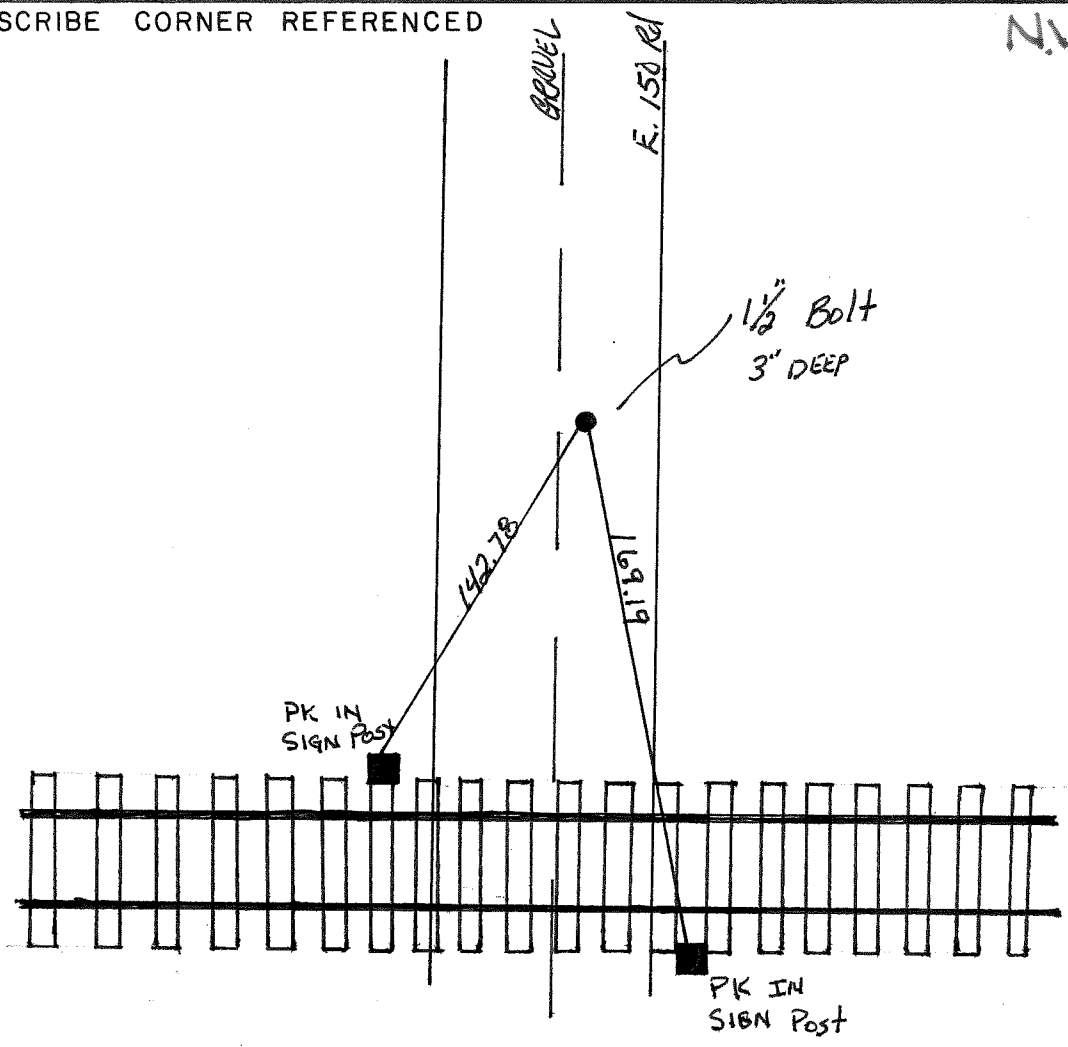
WARRICK COUNTY SURVEYOR
MICHAEL F. FELDBUSCH, L.S.

INDICATE CORNER REFERENCED



DESCRIBE CORNER REFERENCED

N.V.



STATE PLANE COORDINATE DATA

INDIANA ZONE: WEST

X _____

Y _____

ESTABLISHED BY:

APPROVED BY

DATE

REFERENCED BY:

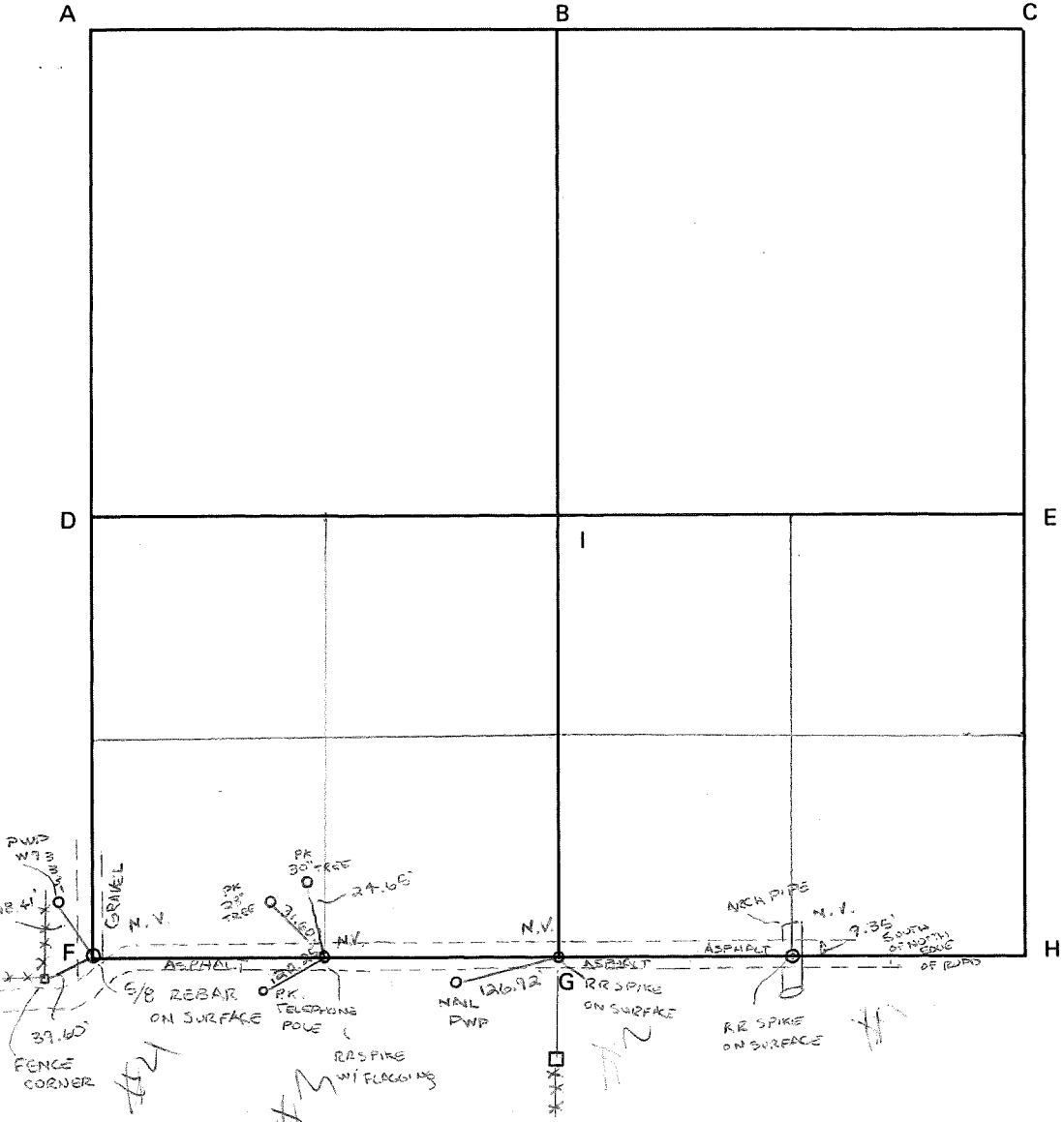
DATE

Larry Beck

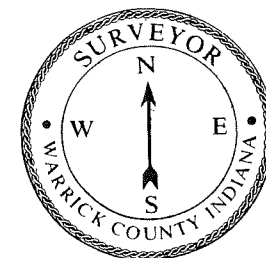
4-21-83

CORNER CODE SYSTEM
Warrick County

NOTES



CORNER RECORD
WARRICK COUNTY



DESCRIPTION: CENTER OF SECTION

_____ CORNER _____

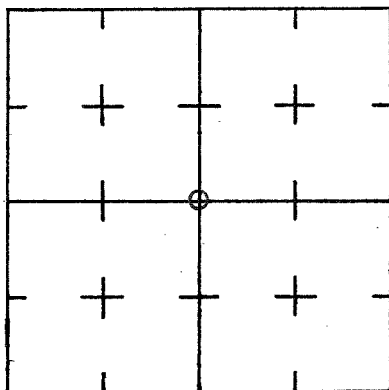
SECTION 31, T. 5 S. R. 7 W.

2nd PRINCIPLE MERIDIAN

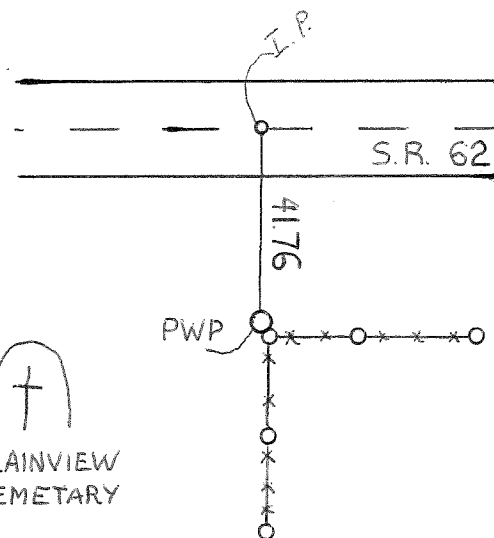
WARRICK COUNTY SURVEYOR

MICHAEL IRVIN

INDICATE CORNER REFERENCED



DESCRIBE CORNER REFERENCED



STATE PLANE COORDINATE DATA

INDIANA ZONE: WEST

X _____

Y _____

ESTABLISHED BY:

APPROVED BY

DATE

REFERENCED BY:

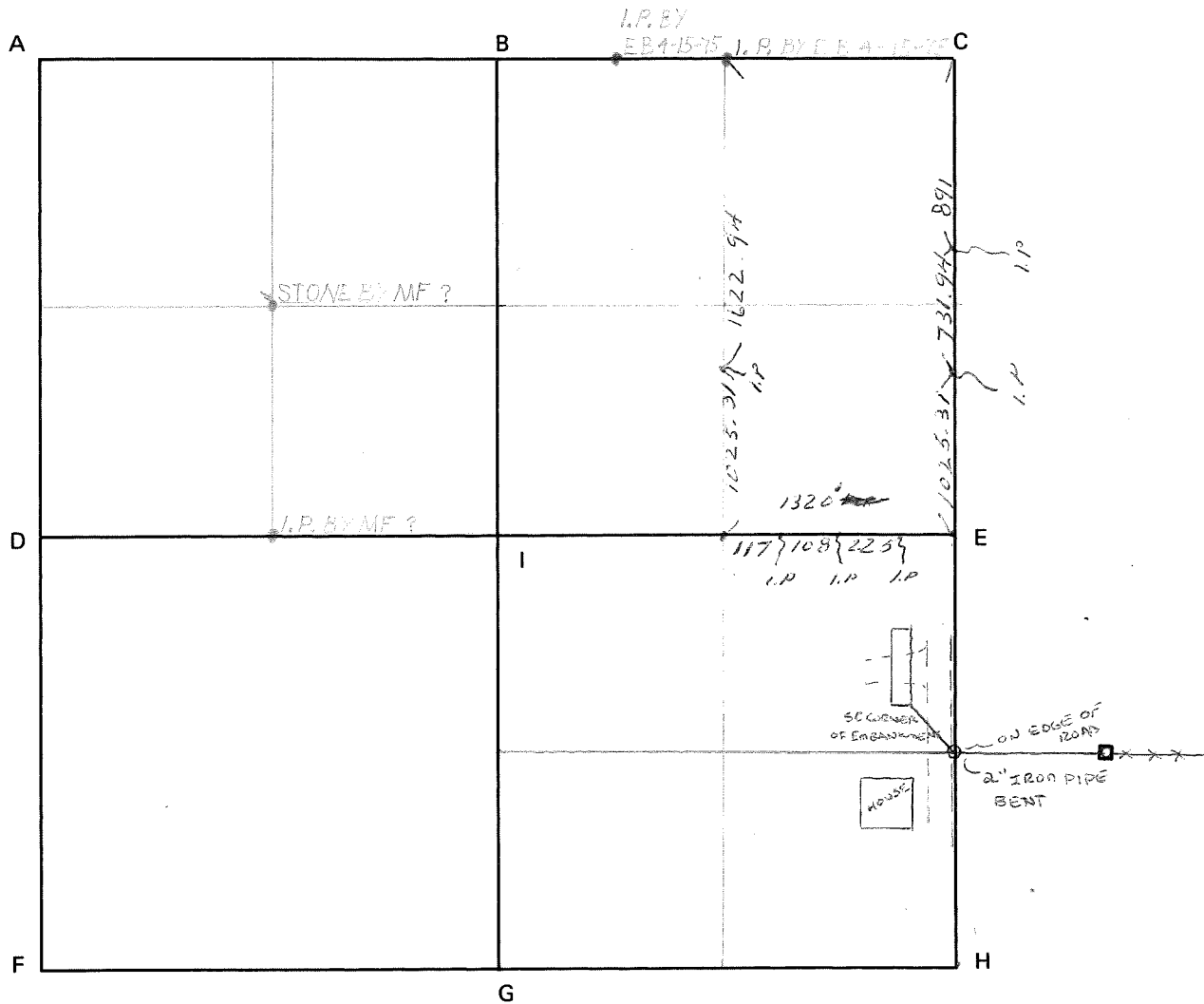
G.B.

DATE

9-19-84

CORNER CODE SYSTEM
Warrick County

NOTES



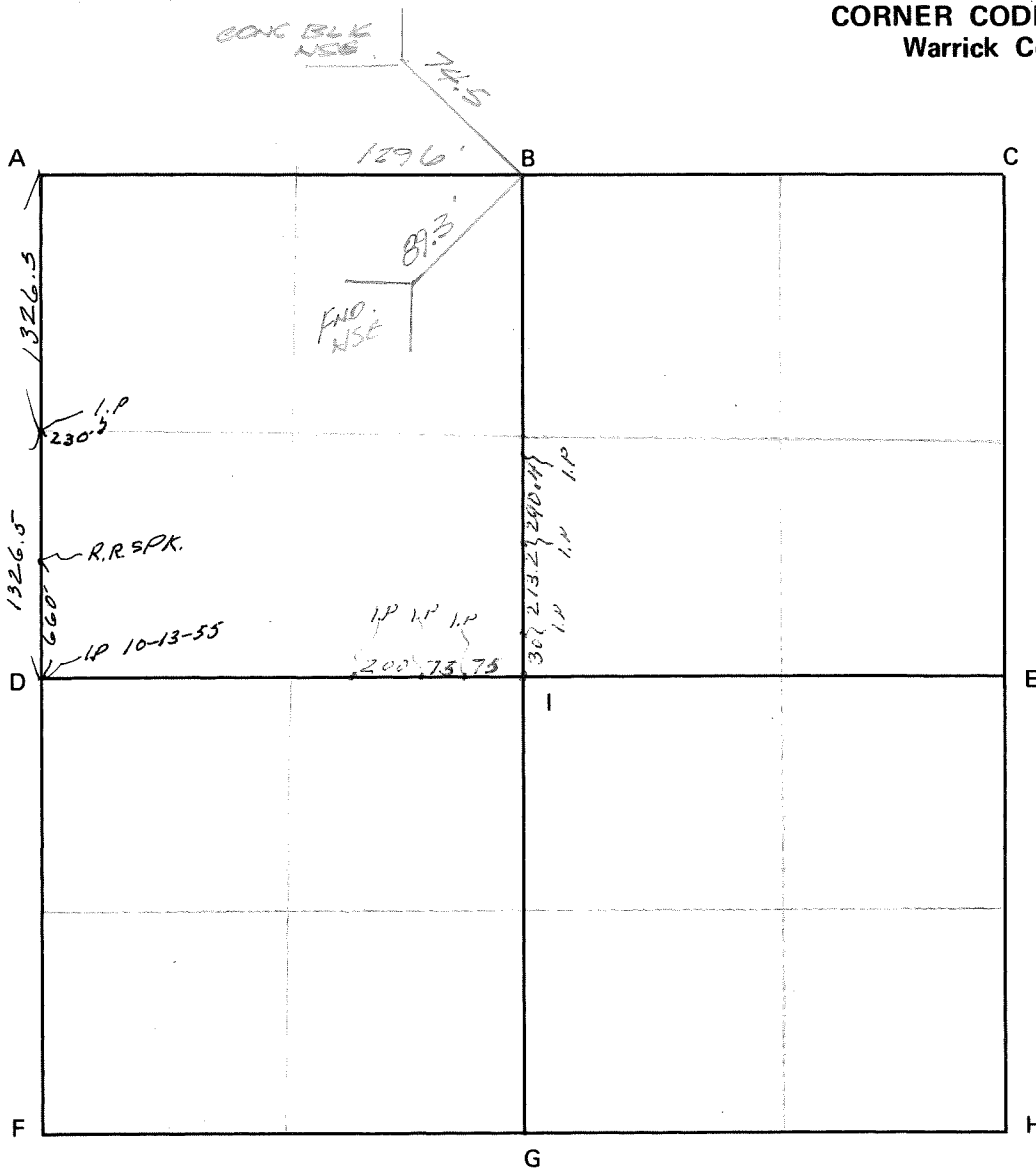
RECORD OF SECTION CORNERS

Warrick County

tion 31 Township 5 South Range 7 West 2nd Principle Meridian _____

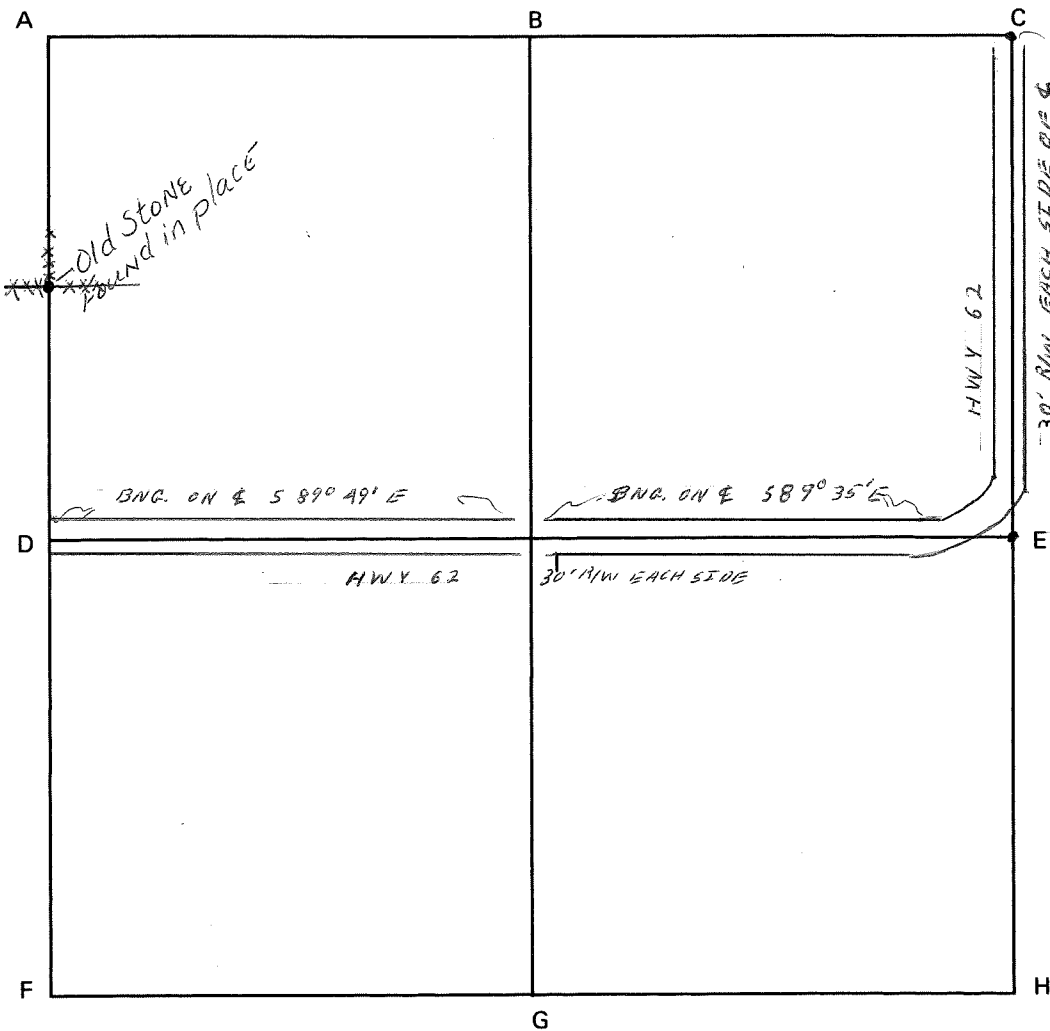
| Date | Cor | Location | Description of | | Distance from Corner | Bearing from Corner (North Assumed) | Cond | Check By | Remarks |
|---------|-----|----------|----------------|------------|----------------------|-------------------------------------|------|----------|-----------------|
| | | | Monument | Reference | | | | | |
| 10/1/53 | sw | cor. | e | 1/2 Ne 1/4 | | | | | George Reynolds |

CORNER CODE SYSTEM
Warrick County



NOTES

CORNER CODE SYSTEM
Warrick County



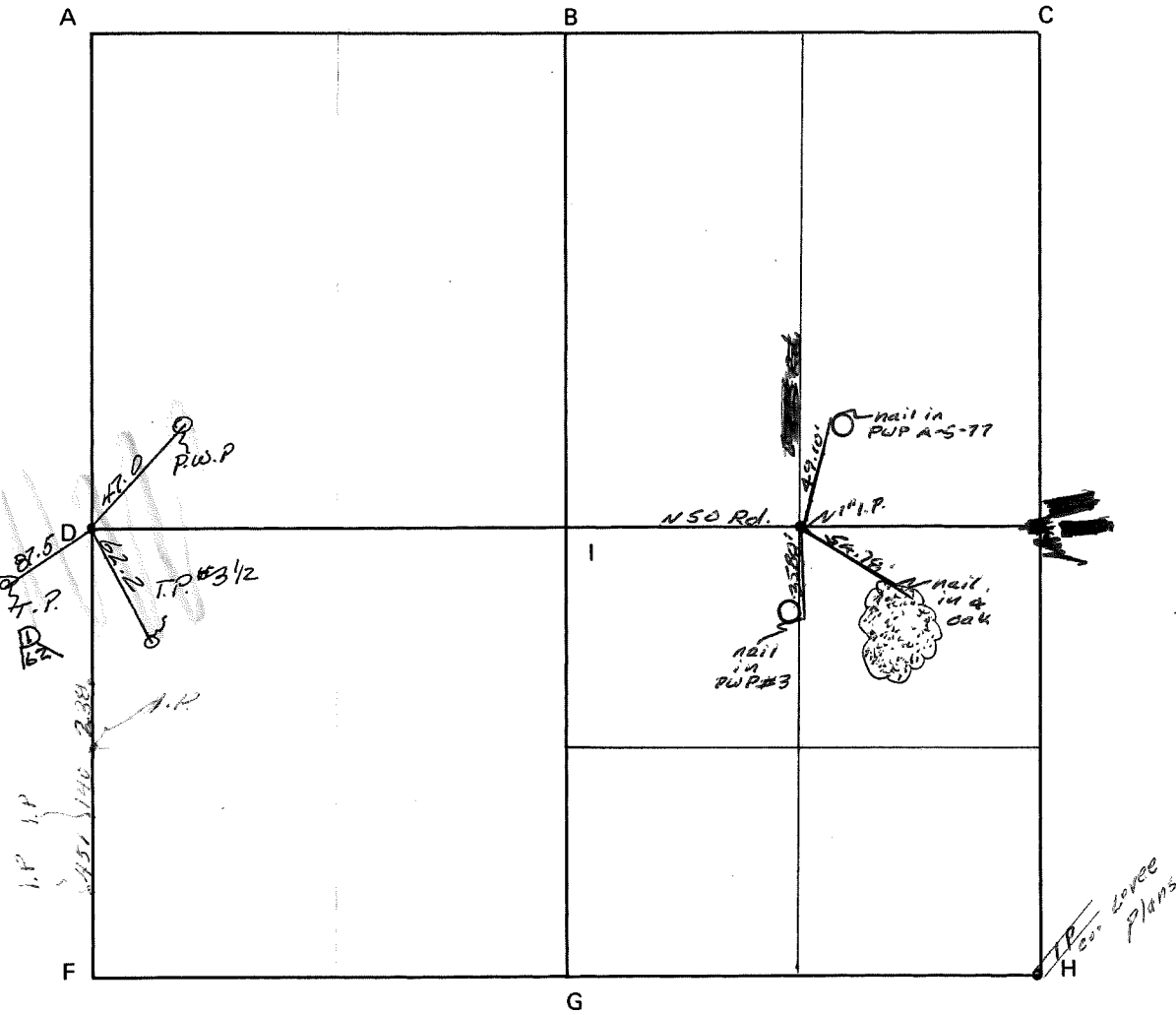
NOTES

STONE REPLACED WITH MONUMENT

STONE REPLACED BY MONUMENT

CORNER CODE SYSTEM
Warrick County

NOTES



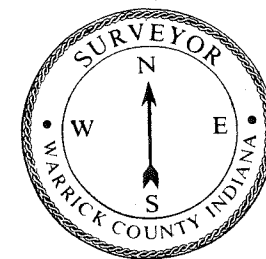
RECORD OF SECTION CORNERS

Warrick County

Section 34 Township 5 South Range 7 West 2nd Principle Meridian _____

| Date | Cor | Location | Description of | | Distance from Corner | Bearing from Corner (North Assumed) | Cond | Check By | Remarks |
|---------|-----|----------|-------------------|-----------|----------------------|-------------------------------------|------|----------|---------|
| | | | Monument | Reference | | | | | |
| 9/19/50 | | SW cor. | NW-SW iron pin | | | | | | SWC |

CORNER RECORD
WARRICK COUNTY



DESCRIPTION:

SW CORNER NW 1/4

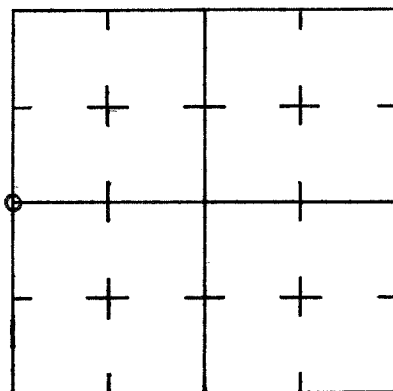
SECTION 34, T. 5 S. R. 7 W.

2nd PRINCIPLE MERIDIAN

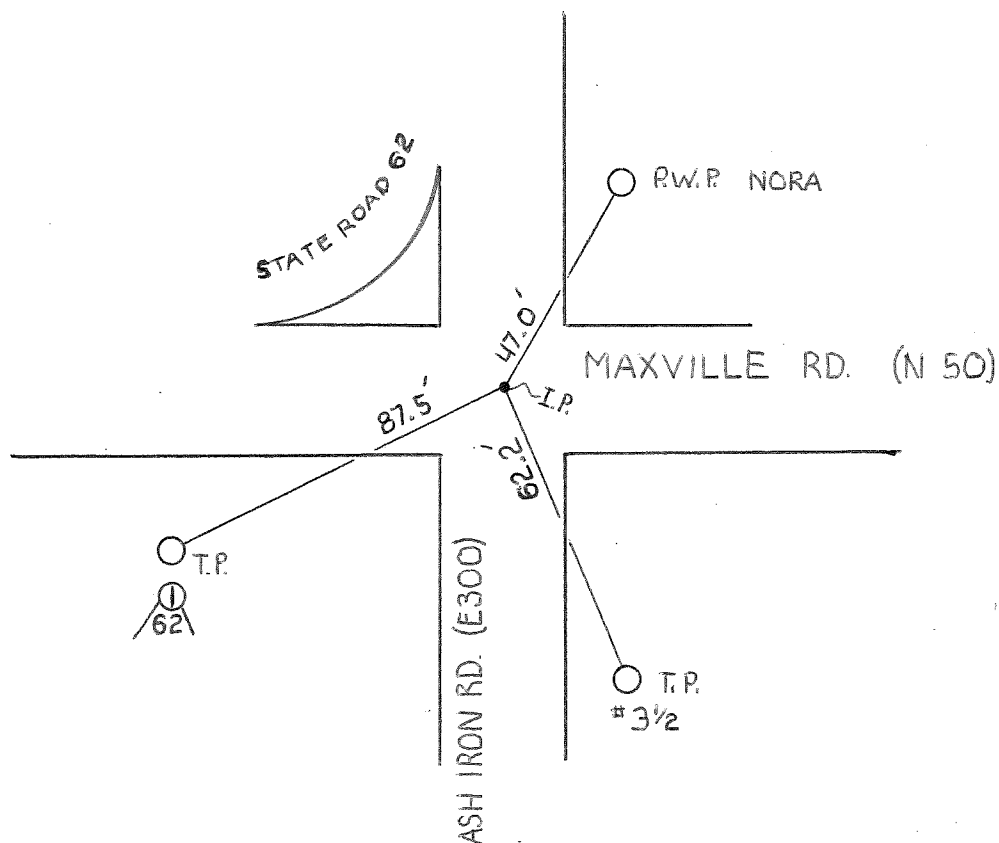
WARRICK COUNTY SURVEYOR

MICHAEL IRVIN

INDICATE CORNER REFERENCED



DESCRIBE CORNER REFERENCED



STATE PLANE COORDINATE DATA

INDIANA ZONE: WEST

X _____

Y _____

ESTABLISHED BY:

APPROVED BY

DATE
5-21-73

REFERENCED BY:

DATE

000016

SE corner of NE $\frac{1}{4}$ + NE corner SE $\frac{1}{4}$ sec. 33-55-7w
NW corner of SW $\frac{1}{4}$ + (SW corner NW $\frac{1}{4}$ sec. 34-55-7w)

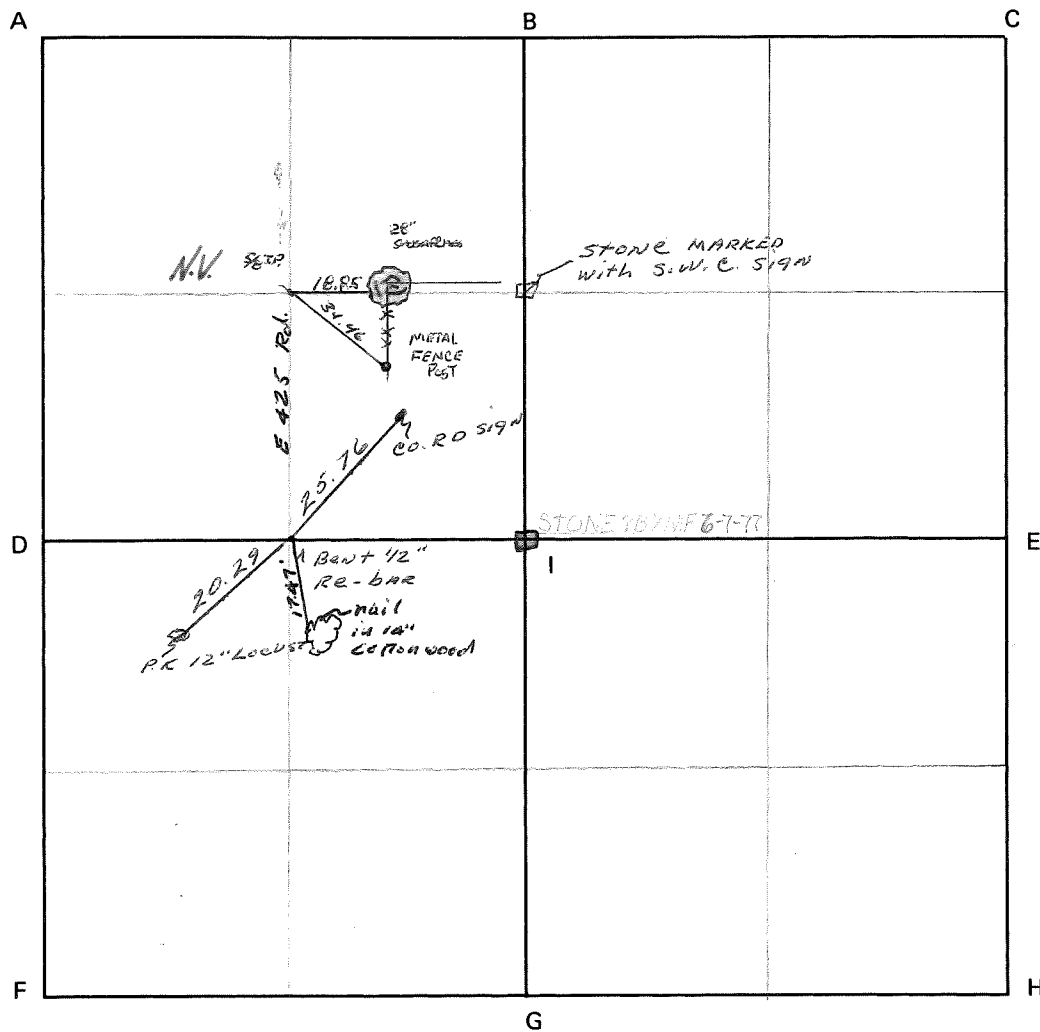
Type of Monument: I.P.

Date referenced: 5/21/73

referenced by: SWC



CORNER CODE SYSTEM
Warrick County



NOTES

