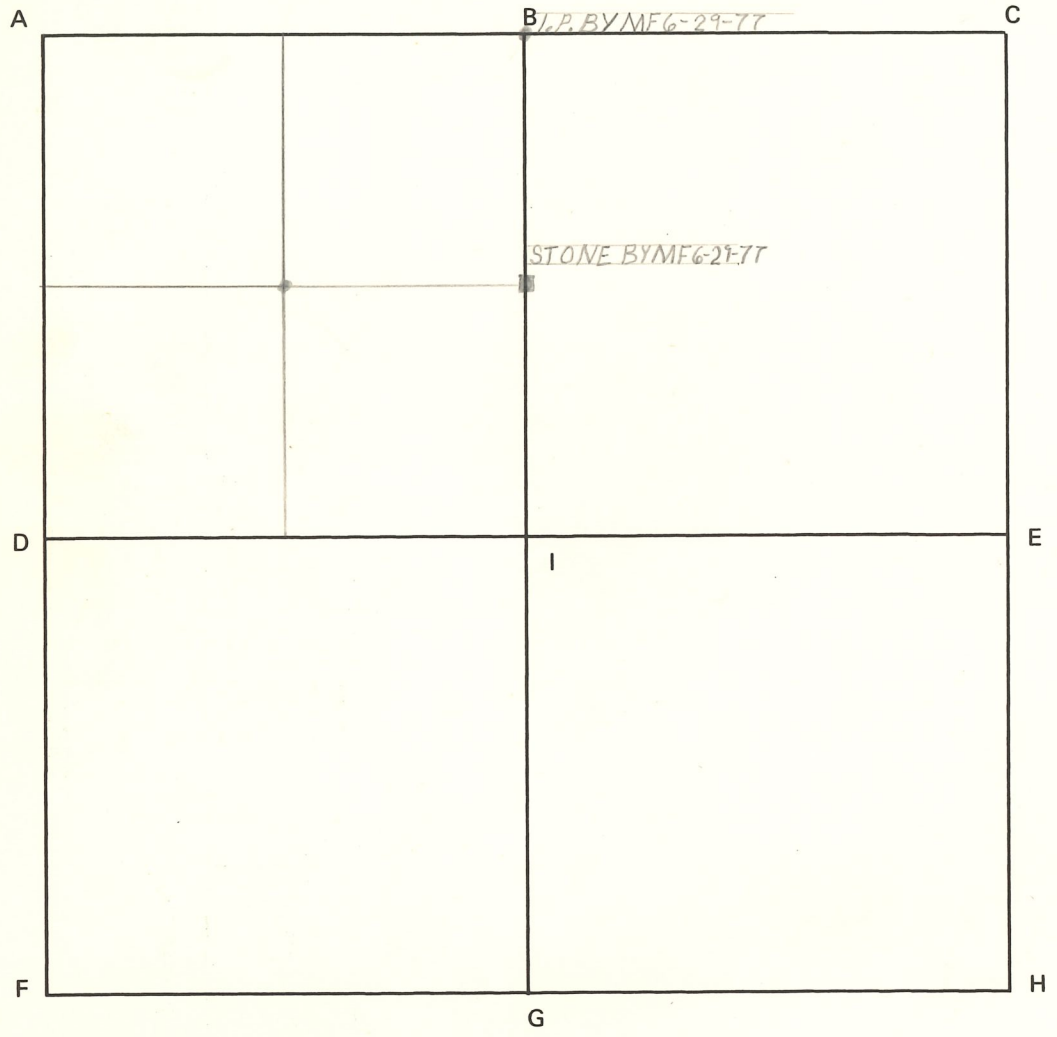


CORNER CODE SYSTEM
Warrick County



NOTES

CORNER RECORD WARRICK COUNTY

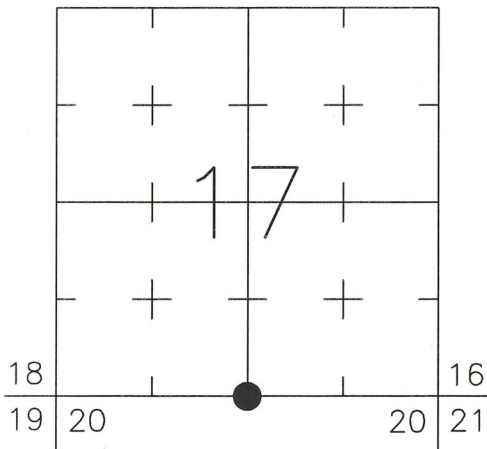


DESCRIPTION:
SOUTHWEST CORNER SOUTHEAST QUARTER
 SECTION 17, T. 5 S., R. 6 W.
 2nd PRINCIPAL MERIDIAN

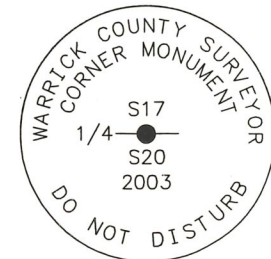
WARRICK COUNTY SURVEYOR
 KARAN HARGRAVE-BARNHILL

FOR NOTES ON CORNER HISTORY SEE REVERSE.

INDICATE CORNER REFERENCED:



MONUMENT TYPE: ALUMINUM DISK
 SIZE: 3-1/4" DIAM.
 DEPTH/HEIGHT: FLUSH
 REFERENCE TIE DRAWING:



Stamping
on Disk

Nail Stamped "SURVEY MARK"
 SW Side
 27" Twin-Trunk Hick.
 Up 18"

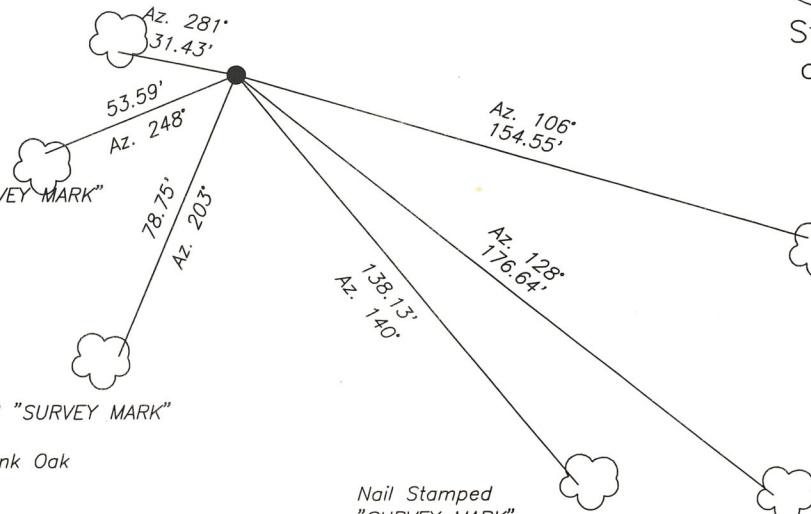
Nail Stamped "SURVEY MARK"
 N. Side
 48" Shagbark Hick.
 Up 54"

Nail Stamped "SURVEY MARK"
 NE Side
 26" Trip. Trunk Oak
 Up 54"

Nail Stamped "SURVEY MARK"
 SW Side
 18" Sycamore
 (Leaning N.)
 Up 63"

Nail Stamped "SURVEY MARK"
 NW Side
 27" Ash
 Up 80"

Nail Stamped "SURVEY MARK"
 W. Side
 24" Walnut
 Up 75"



STATE PLANE COORDINATE DATA:
 INDIANA WEST ZONE, NAD 83 (1997)
 U.S. SURVEY FEET

X 2947958.08

Y 1029563.53

COORDINATES ESTABLISHED BY:
 Bernardin-Lochmueller Assoc. by GPS
 ties to HARN Station "JACKSON"
 APPROVED BY:

DATE:

REFERENCED BY: M.BADGER/C.BINKLEY DATE: 4/10/03
 DISK SET 10/24/03 D.DREES/G.M.BURRESS
 APPROVED BY: P.JONES, RLS#9600016 DATE: 10/28/03

CORNER FILE CODE:
 T5S-R6W-N-07

CORNER HISTORY:

CORNER FILE CODE:
T5S-R6W-N-07

ORIGINAL USPLS SURVEY: Survey by Augustus Stone, 1805.

COUNTY SURVEYOR'S BOOKS: Book 2 P. 11 O.B. Pasco WCS November 30, 1880 (bearing trees only, monument not identified).

Book 3 P. 34 Louis Meyer WCS May 10, 1904 "Sandstone Set".

OTHER SURVEYS AND PLATS: (none found).

VERIFICATION OF CORNER POSITION: April, 2003; The corner position was re-established by projecting eastward the bearing and distance measured between a pinchtap pipe found at the northwest corner of Section 20 and a rebar found at the NE corner NW 1/4 NW 1/4 of Section 20. This is consistent with the 1904 County Surveyor's records, and produced more reasonable proportions within Section 20 than if re-established by single proportion between the northwest and northeast corners of the section. (Also, uncertainties in the northing position of the northeast corner of the section made single proportion seem less reliable.) The easting position as re-established was consistent with a woods line running north and south and an existing fenceline running north. The uncertainty in this corner is estimated at 18' north and 2' west, based on the relative position that would result from single proportion. Coordinates shown were obtained by a combination of rapid-static GPS and total-station traverse. For additional information refer to the Boundary Retracement Survey recorded in Doc. 2003R-006299 (Bernardin-Lochmueller Assoc. Proj. 102-0060-OSV/SVOA). The rebar with cap shown on Doc. 2003R-006299 was replaced October 24, 2003 with the aluminum disk shown.

P.E. Jones 10/28/03

CORNER RECORD
WARRICK COUNTY

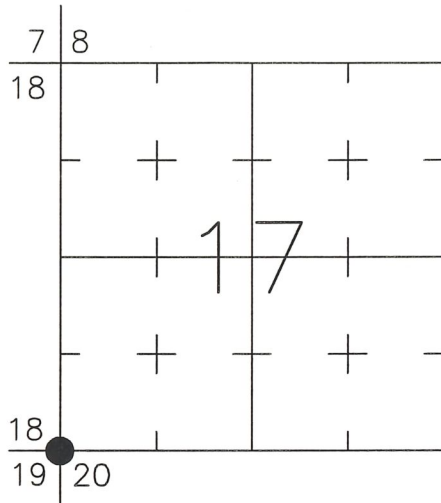


DESCRIPTION:

SOUTHWEST CORNER _____
SECTION 17, T. 5 S., R. 6 W.
2nd PRINCIPAL MERIDIAN

WARRICK COUNTY SURVEYOR
KARAN HARGRAVE-BARNHILL

INDICATE CORNER REFERENCED:



MONUMENT TYPE: IRON PINCH-TOP PIPE
SIZE: 2-1/2" O.D.
DEPTH/HEIGHT: PROJECTING 36"
REFERENCE TIE DRAWING:

FOR NOTES ON CORNER HISTORY SEE REVERSE.

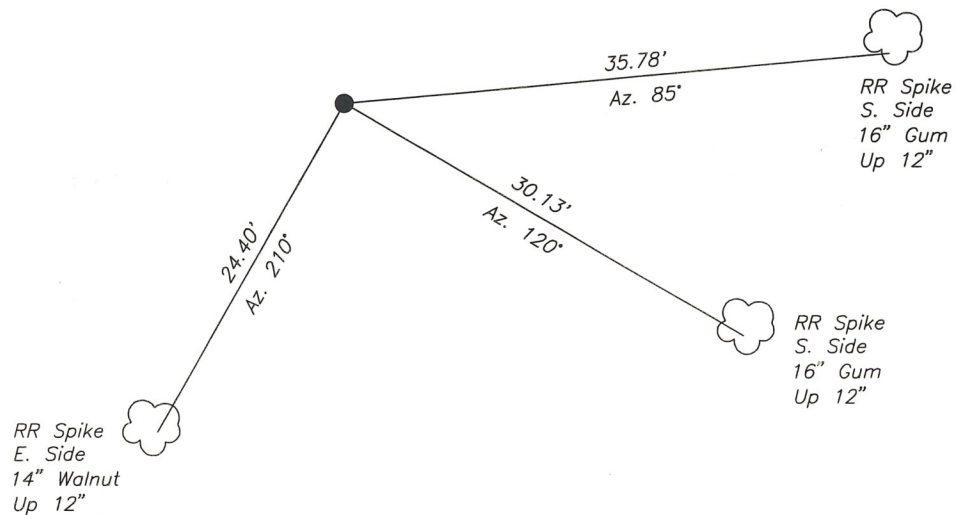
STATE PLANE COORDINATE DATA:
INDIANA WEST ZONE, NAD 83 (1997)
U.S. SURVEY FEET

X 2945340.26

Y 1029622.57

COORDINATES ESTABLISHED BY:
Bernardin-Lochmueller Assoc. by GPS
ties to HARN Station "JACKSON"
APPROVED BY:

DATE:



REFERENCED BY: M.BADGER/G.M.BURRESS DATE: 3/18/03

APPROVED BY: P.JONES, RLS#9600016

DATE: 4/17/03

CORNER FILE CODE:
T5S-R6W-N-05

CORNER HISTORY:

CORNER FILE CODE:
T5S-R6W-N-05

ORIGINAL USPLS SURVEY: Survey by Augustus Stone, 1805.

COUNTY SURVEYOR'S BOOKS: Book 1 P. 121 John C. Frary WCS September 20, 1859 (dimensions only, monument not identified).

Book 2 P. 11 O.B. Pasco WCS November 30, 1880 (bearing trees only, monument not identified).

Book 3 P. 34 Louis Meyer WCS May 10, 1904 "Sandstone Set".

Book 3 P. 34 Jnos J. Wilke WCS February 12&13, 1906 "Pieces of rock found".

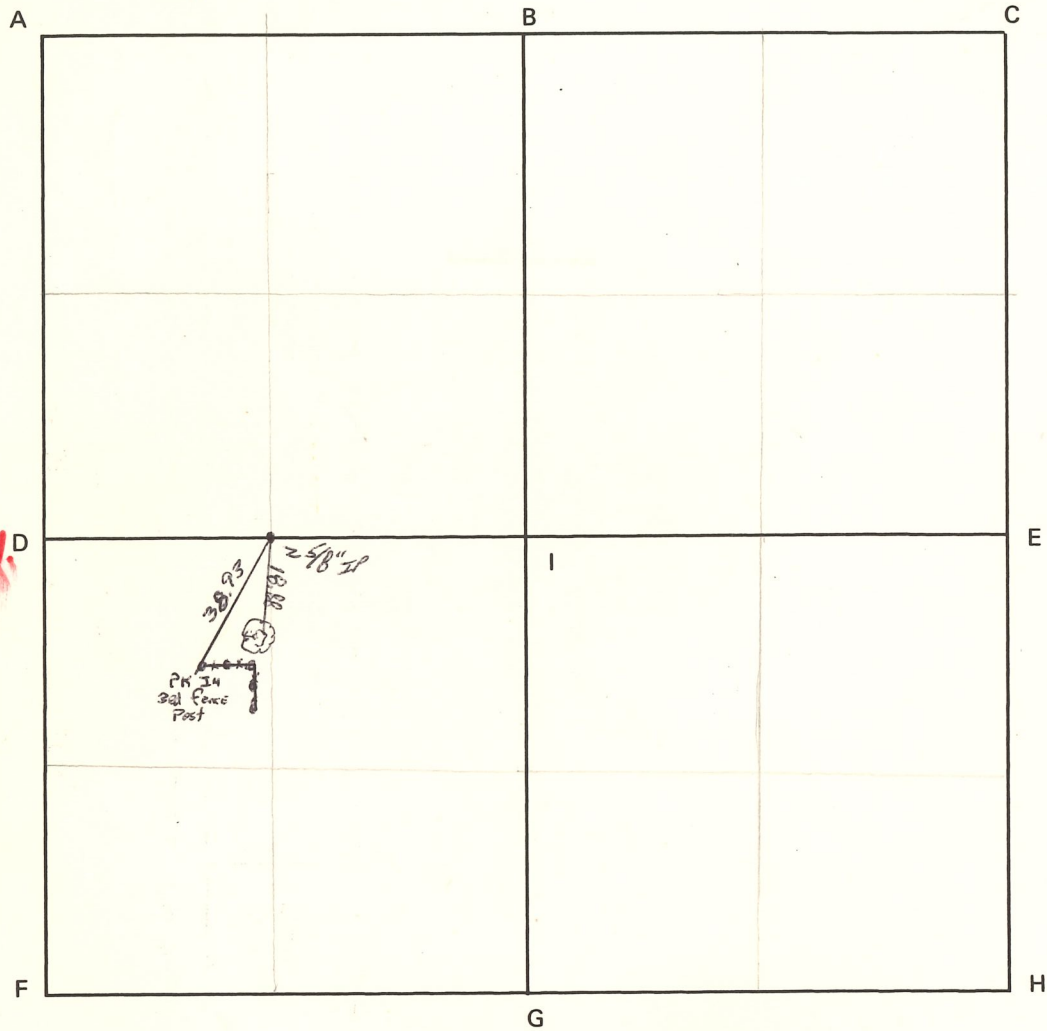
OTHER SURVEYS AND PLATS: (none found)

VERIFICATION OF CORNER POSITION: March, 2003; the 2-1/4" O.D. iron pinch-top pipe was found in place. The history of the pipe is not known. Coordinates shown were obtained by a combination of rapid-static GPS and total-station traverse. For additional information refer to the Boundary Retracement Survey recorded in Doc. 2003R-006299 (Bernardin-Lochmueller Assoc. Proj. 102-0060-OSV/SVOA).

P.E. Jones 4/17/03

CORNER CODE SYSTEM
Warrick County

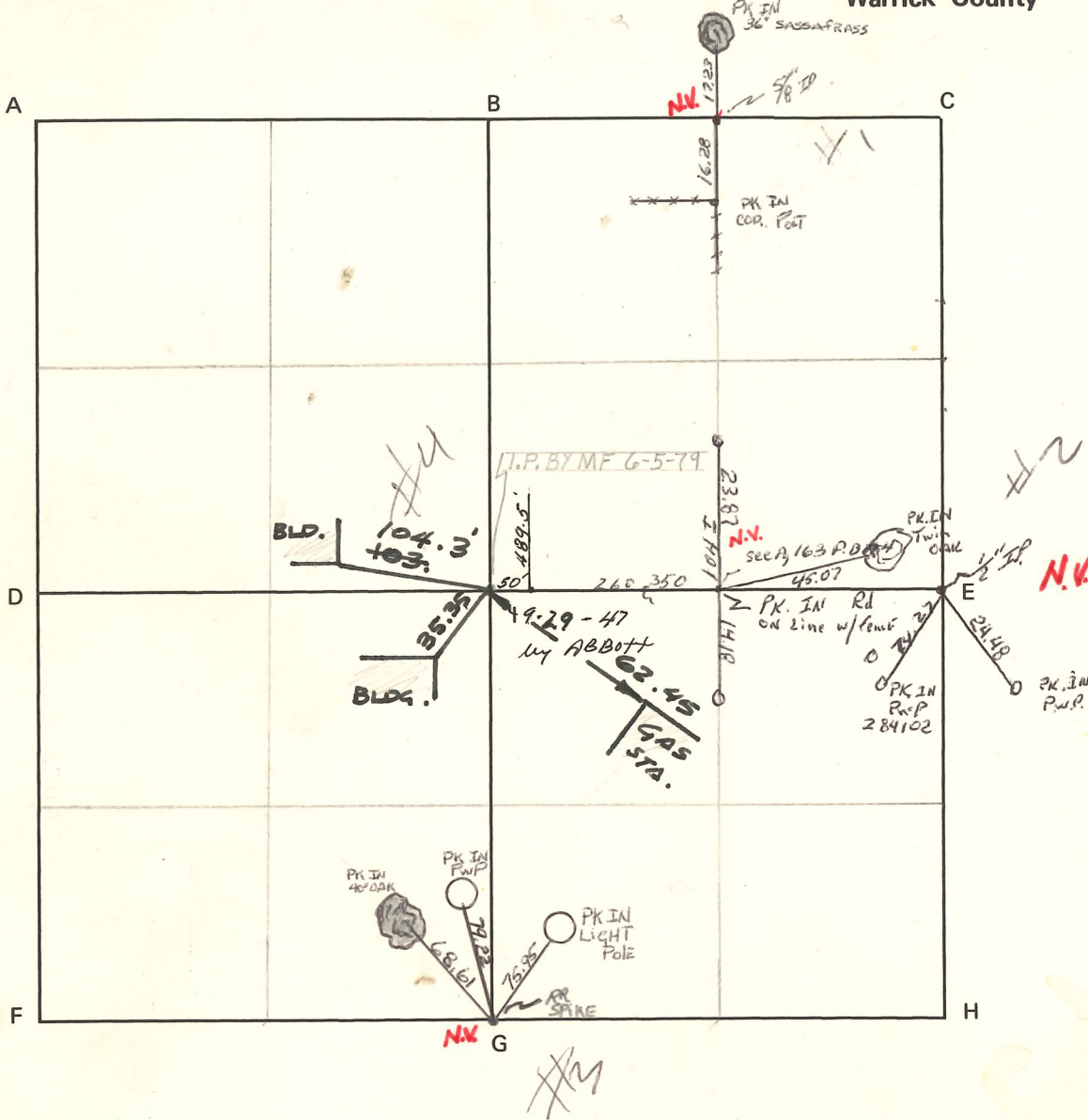
NOTES



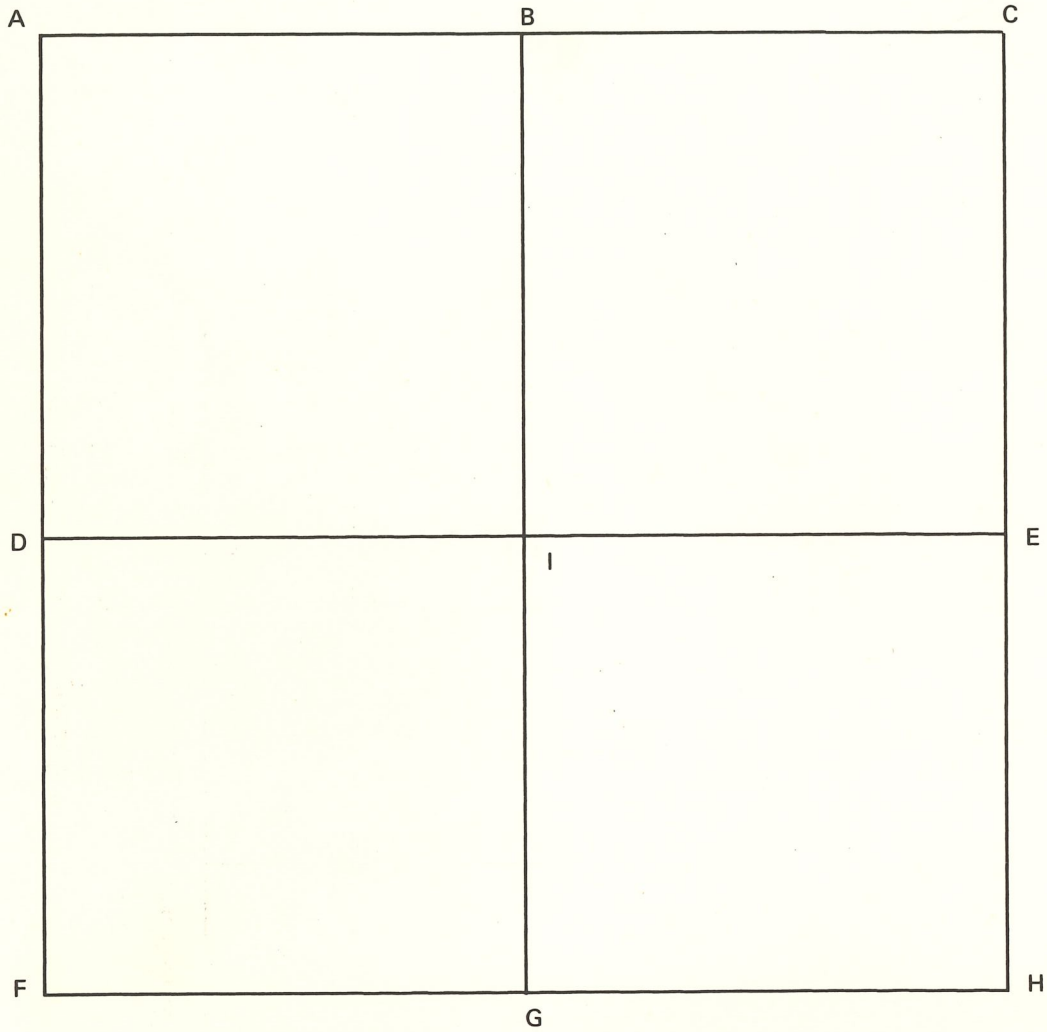
NH

CORNER CODE SYSTEM
Warrick County

NOTES

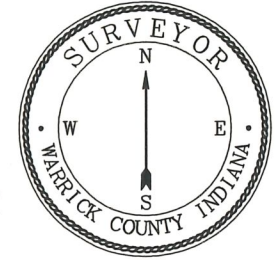


CORNER CODE SYSTEM
Warrick County



NOTES

CORNER RECORD WARRICK COUNTY

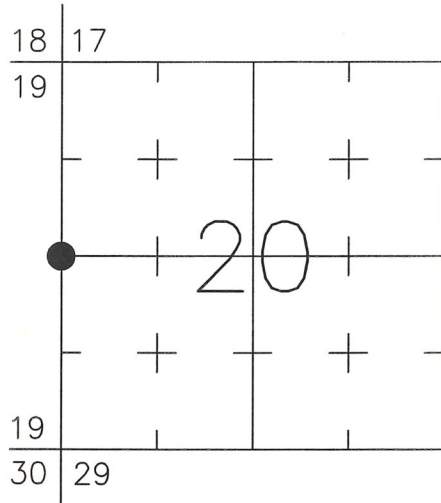


DESCRIPTION:
SOUTHWEST CORNER NORTHWEST QUARTER
SECTION 20, T. 5 S., R. 6 W.
 2nd PRINCIPAL MERIDIAN

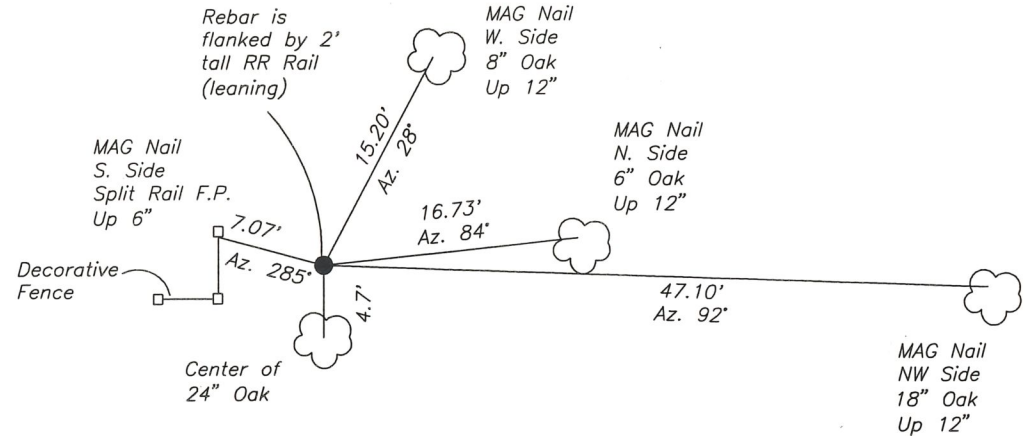
WARRICK COUNTY SURVEYOR
 KARAN HARGRAVE-BARNHILL

FOR NOTES ON CORNER HISTORY SEE REVERSE.

INDICATE CORNER REFERENCED:



MONUMENT TYPE: REBAR
 SIZE: 5/8" DIA.
 DEPTH/HEIGHT: FLUSH WITH EXIST. GROUND
 REFERENCE TIE DRAWING:



STATE PLANE COORDINATE DATA:
 INDIANA WEST ZONE, NAD 83 (1997)
 U.S. SURVEY FEET

X 2945313.36

Y 1026987.61

COORDINATES ESTABLISHED BY:
 Bernardin-Lochmueller Assoc. by GPS
 ties to HARN Station "JACKSON"
 APPROVED BY:

Co. Rd. 250 N. (Wilson Lane)
 (Asph.)

DATE:

REFERENCED BY: M.BADGER/G.M.BURRESS DATE: 4/14/03

APPROVED BY: P.JONES, RLS#9600016

DATE: 4/17/03

CORNER FILE CODE:
 T5S-R6W-P-05

CORNER HISTORY:

CORNER FILE CODE:
T5S-R6W-P-05

ORIGINAL USPLS SURVEY: Survey by Augustus Stone, 1805.

COUNTY SURVEYOR'S BOOKS: Book 1 Pp. 121 & 122 John C. Frary WCS September 20, 1859 "Oak Post".

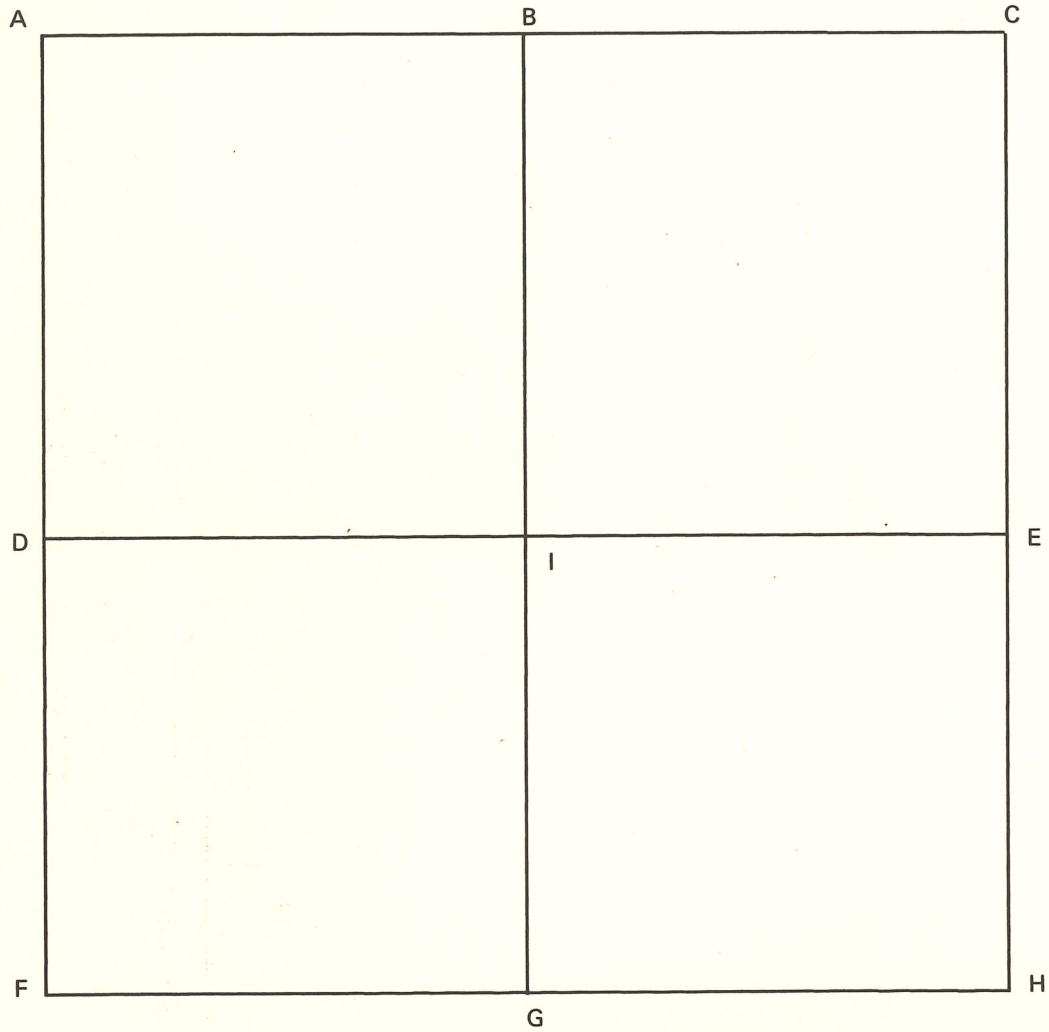
Book 2 P. 11 O.B. Pasco WCS November 30, 1880 (bearing trees only, monument not identified).

OTHER SURVEYS AND PLATS:

VERIFICATION OF CORNER POSITION: April, 2003; the 5/8" rebar shown was found in place. Its history is unknown. A piece of railroad rail, 24" tall but leaning, stands next to the rebar. The rebar is within 1 foot of being equidistant from a pipe marking the northwest corner and the calculated southwest corner of Section 20 (calculated using S.R. 62 road plan data). There is an uncertainty of 23' southerly due to the relative location of County Road 250N, which would generally be expected to follow approximately the quarter-section lines. Coordinates shown were obtained by a combination of rapid-static GPS and total-station traverse. For additional information refer to the Boundary Retracement Survey recorded in Doc. 2003R-006299 (Bernardin-Lochmueller Assoc. Proj. 102-0060-OSV/SV0A).

P.E. Jones 4/17/03

CORNER CODE SYSTEM
Warrick County



NOTES

CORNER RECORD
WARRICK COUNTY

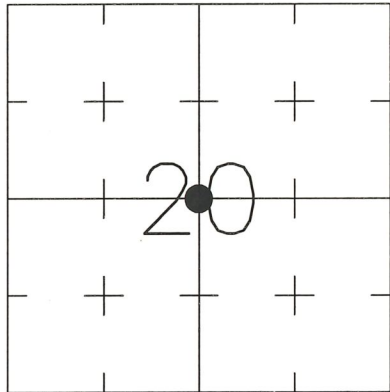


DESCRIPTION:
SOUTHWEST CORNER NORTHEAST QUARTER
SECTION 20, T. 5 S., R. 6 W.
2nd PRINCIPAL MERIDIAN

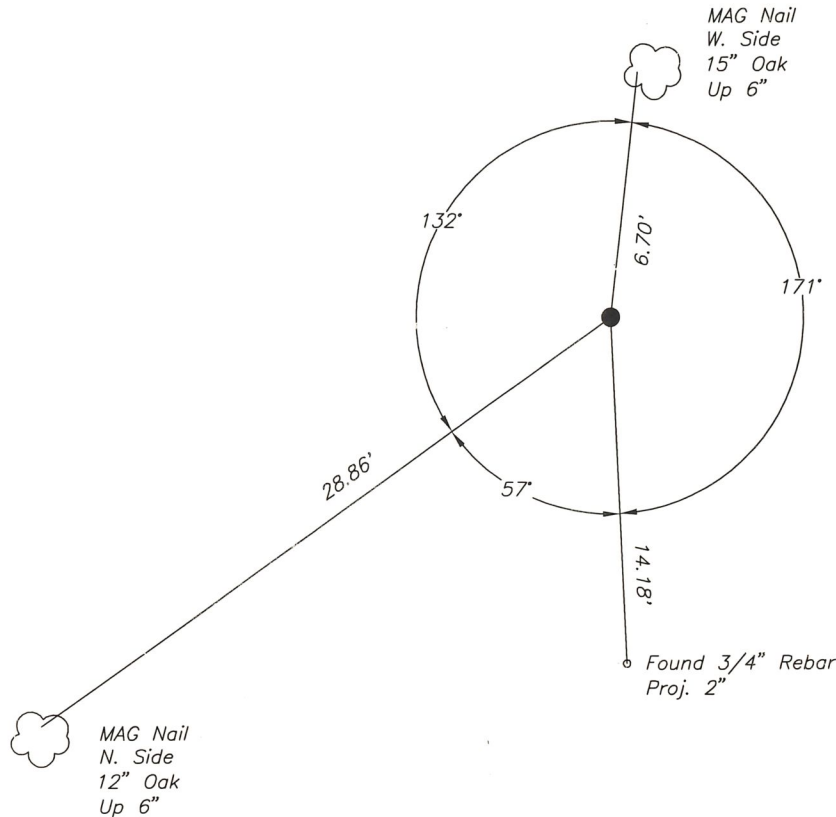
WARRICK COUNTY SURVEYOR
KARAN HARGRAVE-BARNHILL

FOR NOTES ON CORNER HISTORY SEE REVERSE.

INDICATE CORNER REFERENCED:



MONUMENT TYPE: ALUMINUM DISK
SIZE: 3-1/4" DIAM.
DEPTH/HEIGHT: FLUSH
REFERENCE TIE DRAWING:



Stamping
on Disk

STATE PLANE COORDINATE DATA:
INDIANA WEST ZONE, NAD 83 (1997)
U.S. SURVEY FEET

X 2947937.95

Y 1026980.32

COORDINATES ESTABLISHED BY:
Bernardin-Lochmueller Assoc. by GPS
ties to HARN Station "JACKSON"
APPROVED BY:

DATE:

REFERENCED BY: G.F.BERRY/G.M.BURRESS DATE: 4/10/03
DISK SET 10/24/03 D.DREES/G.M.BURRESS
APPROVED BY: P.JONES, RLS#9600016 DATE: 10/28/03

CORNER FILE CODE:
T5S-R6W-P-07

CORNER HISTORY:

CORNER FILE CODE:
T5S-R6W-P-07

ORIGINAL USPLS SURVEY: (Center of section not monumented by USPLS survey)

COUNTY SURVEYOR'S BOOKS: Book 1 P. 122 John C. Frary WCS September 20, 1859 "Stone marked CS set 2 links too far south". (R. Oak 8 S41°E 7-1/2).

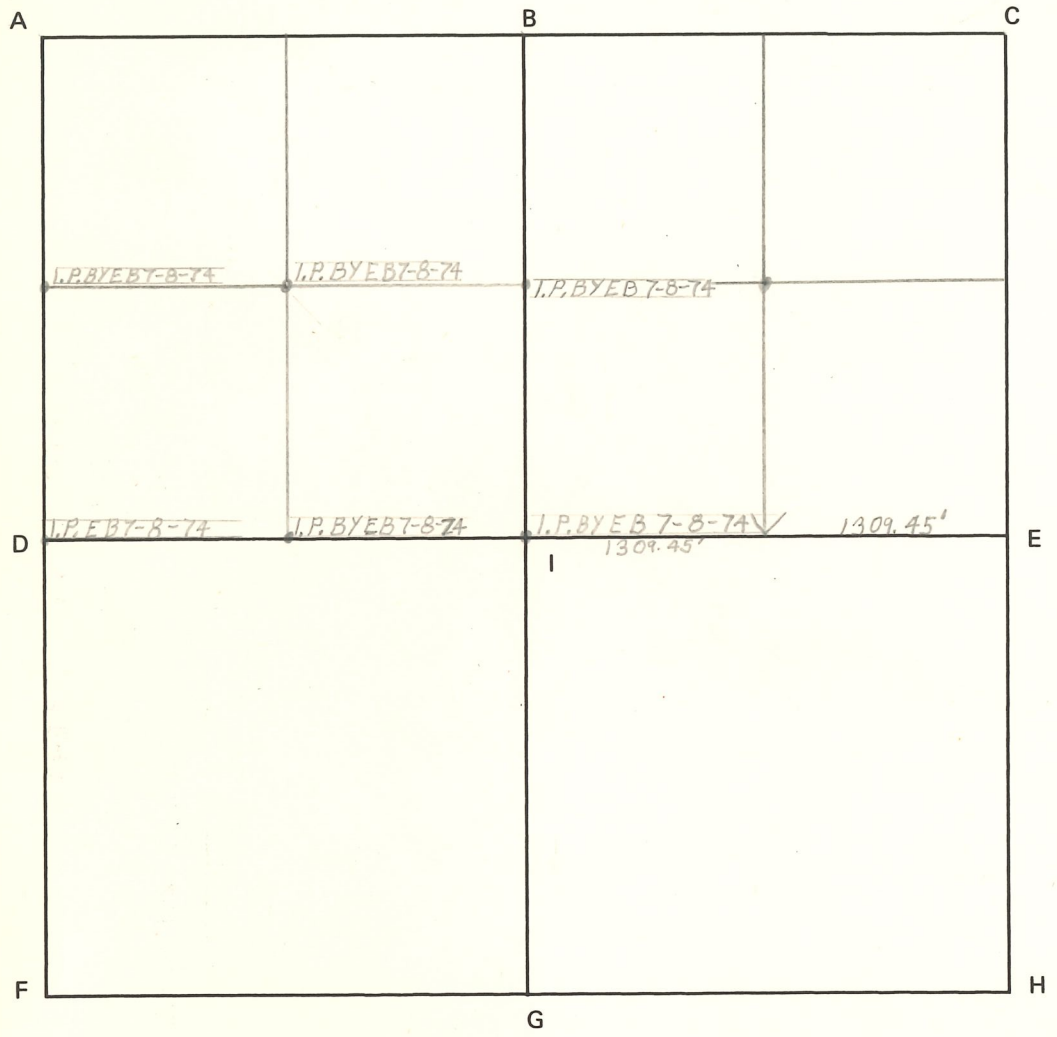
Book 4 P. 46 C. Warren Abbott WCS 1946 "Old original stone found". (also mentions Red Oak bearing tree in place per Bk. 1, P. 122).

OTHER SURVEYS AND PLATS: (None found)

VERIFICATION OF CORNER POSITION: April, 2003; the center of section was re-established at the calculated intersection of the north-south half-section line (on line between the calculated north quarter corner and a stone found at the SW corner NW 1/4 SE 1/4) with the east-west half-section line (on line between a rebar found at the west quarter corner and a RR tie fence post at the east quarter corner). The re-established position agrees well with old fencelines to the west and south. A 3/4" rebar was found 0.62 feet west and 14.17 feet south of the re-established location. The history of the rebar is not known; it was not used since it appears to have been placed at the same time as rebars marking the corners of the 5-acre tract cut out of the E 1/2 NW 1/4 (Deed File 3, Card 13455). The bearings measured between these rebars did not correspond well with other monumentation in the area and therefore were not considered reliable. Coordinates shown were obtained by a combination of rapid-static GPS and total-station traverse. For additional information refer to the Boundary Retracement Survey recorded in Doc. 2003R-006299 (Bernardin-Lochmueller Assoc. Proj. 102-0060-OSV/SV0A). The rebar with cap shown on Doc. 2003R-006299 was replaced October 24, 2003 with the aluminum disk shown.

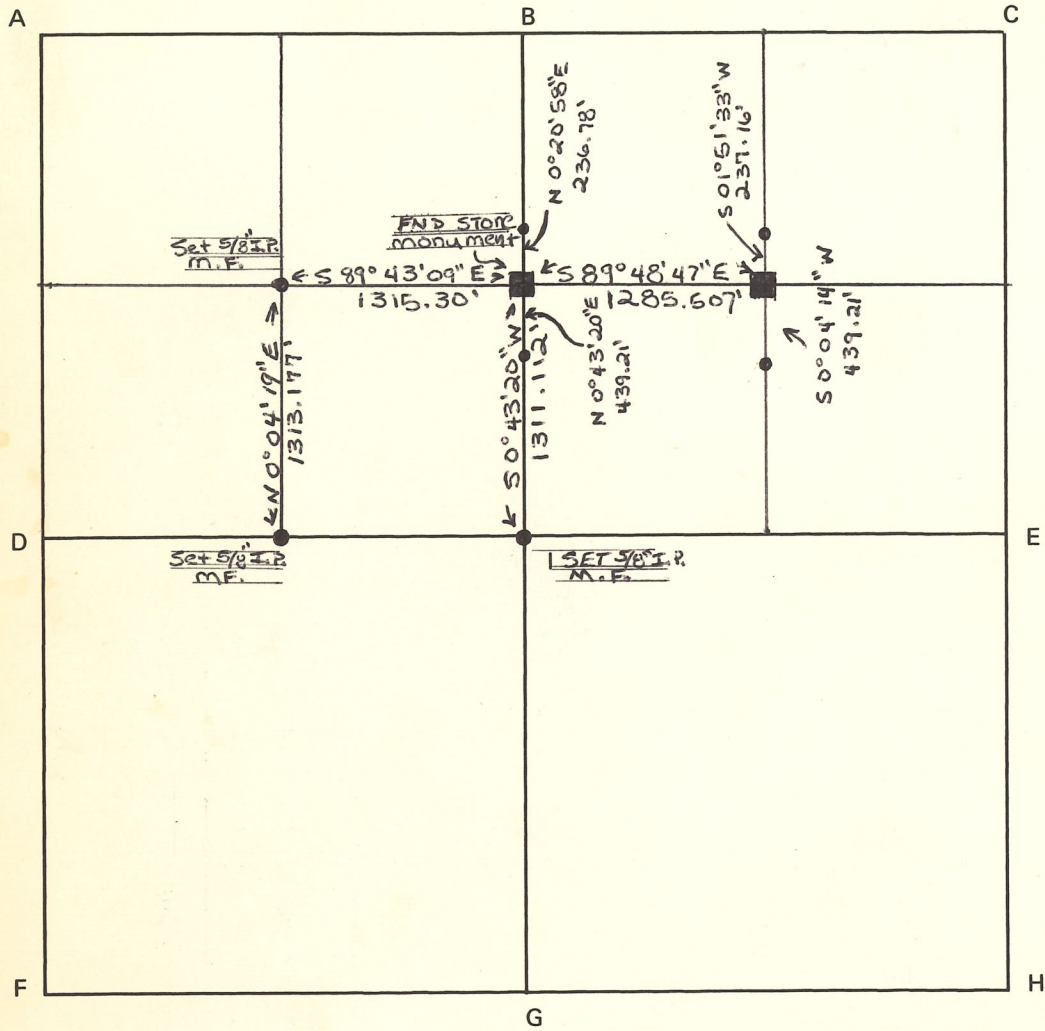
P.E. Jones 10/28/03

CORNER CODE SYSTEM
Warrick County



NOTES

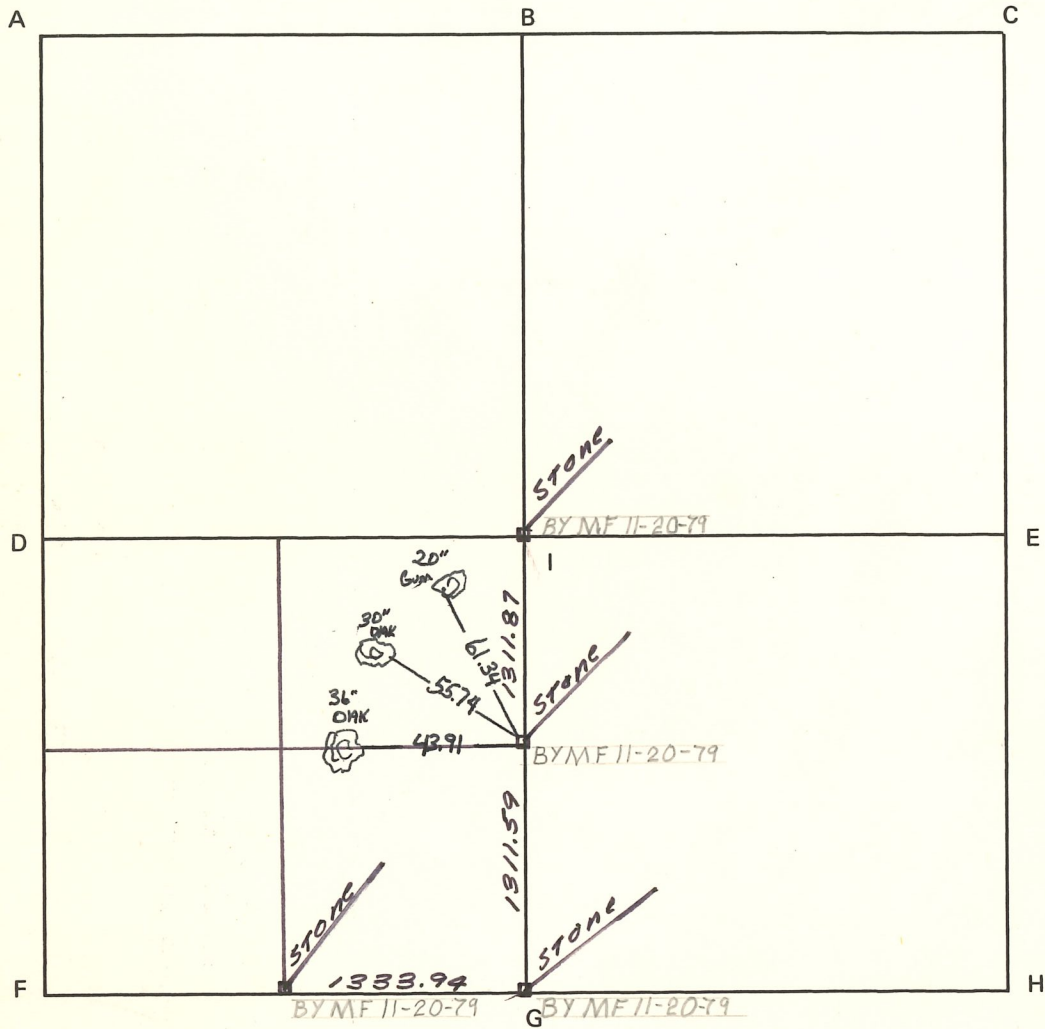
CORNER CODE SYSTEM
Warrick County



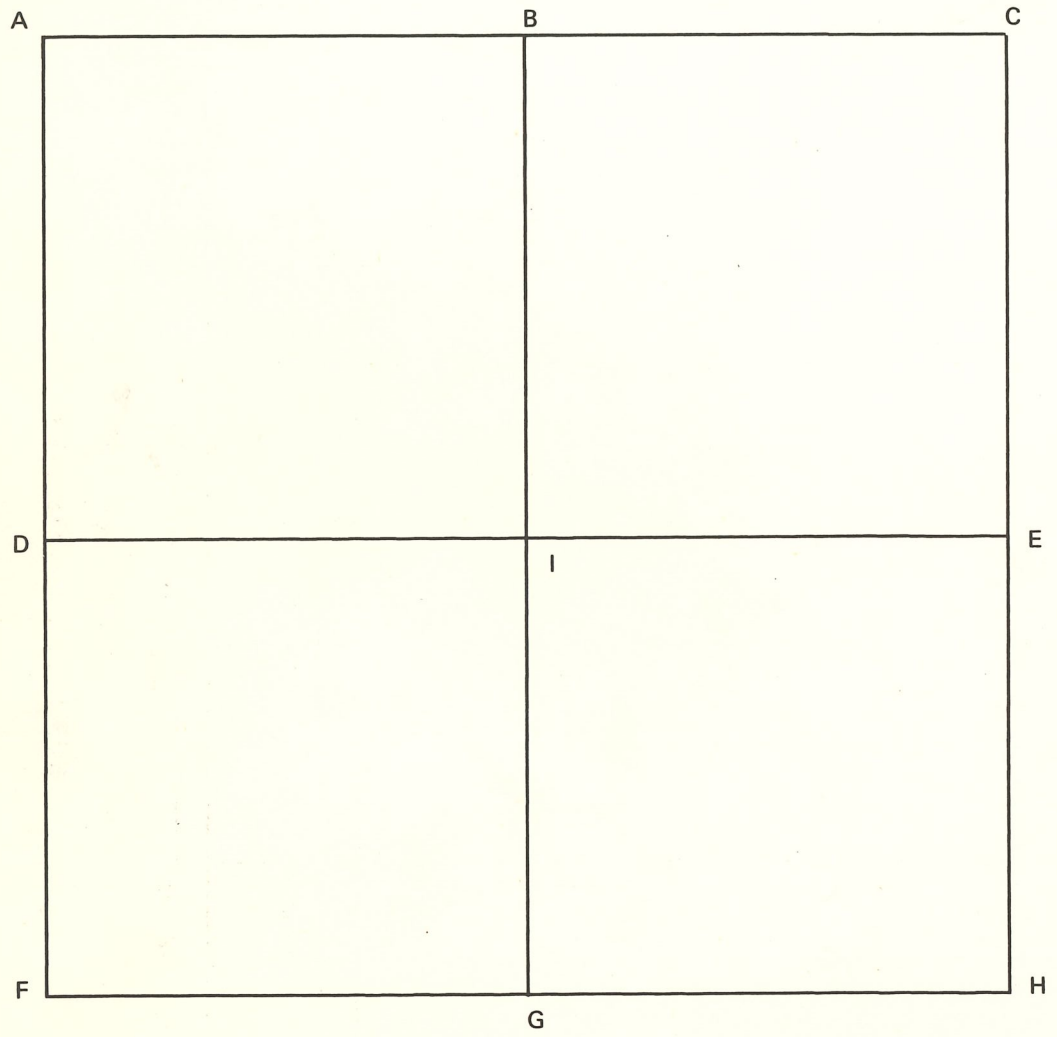
NOTES

CORNER CODE SYSTEM
Warrick County

NOTES

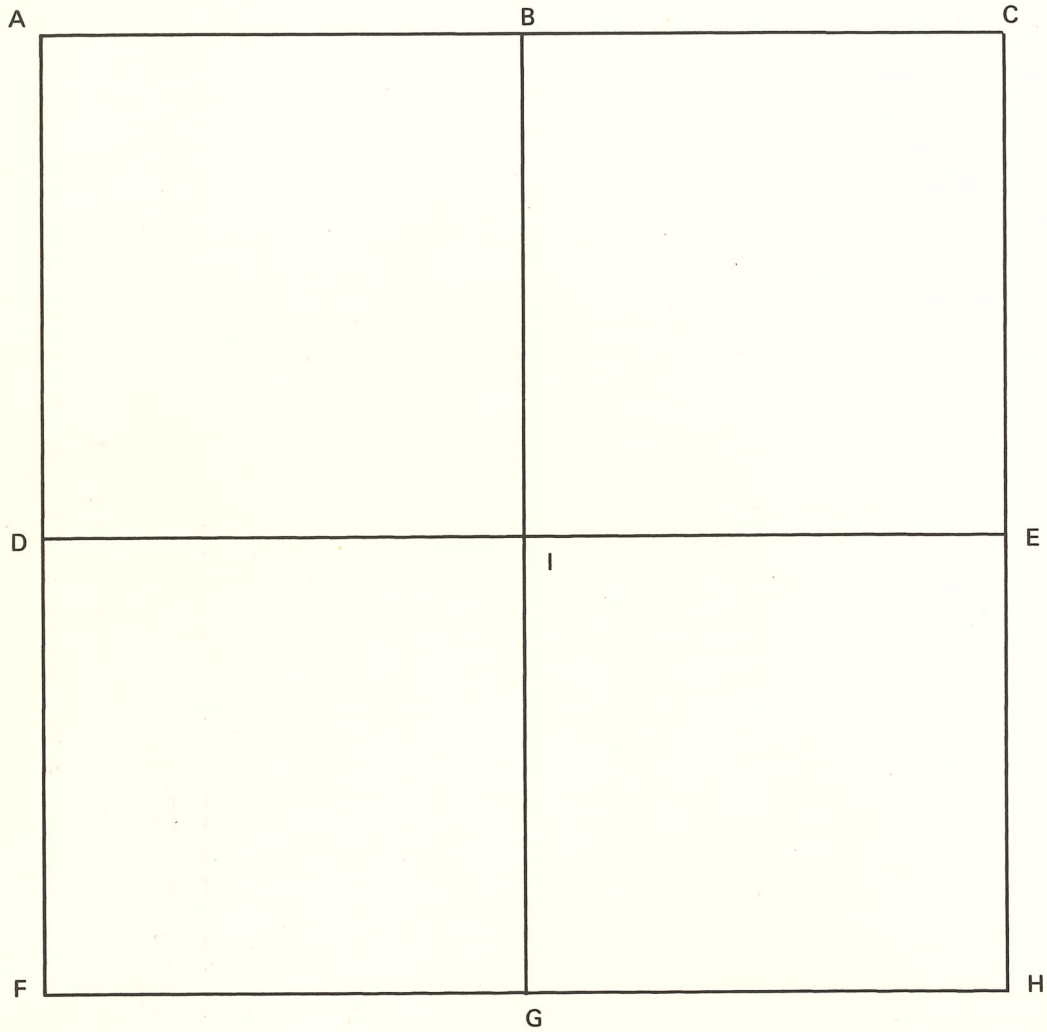


CORNER CODE SYSTEM
Warrick County



NOTES

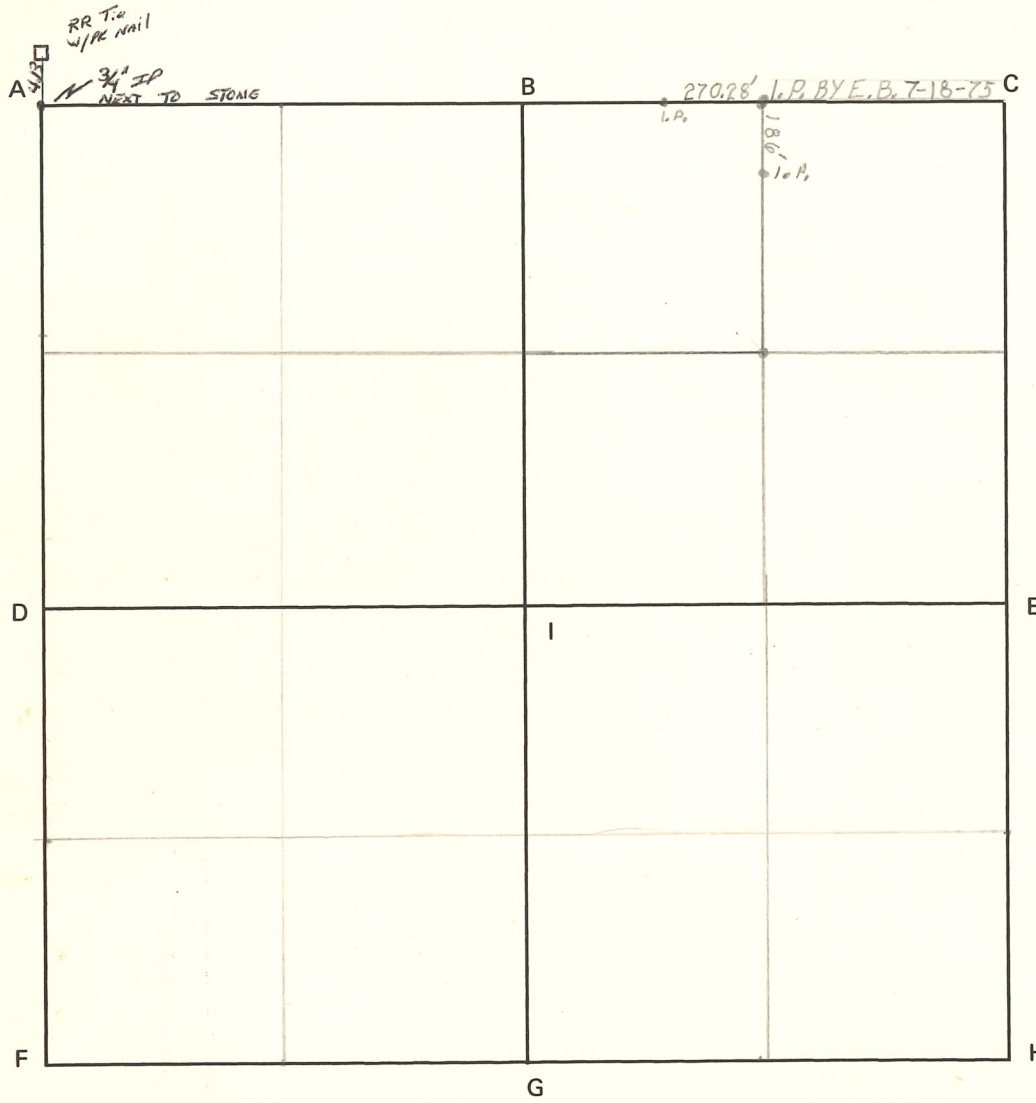
CORNER CODE SYSTEM
Warrick County



NOTES

CORNER CODE SYSTEM
Warrick County

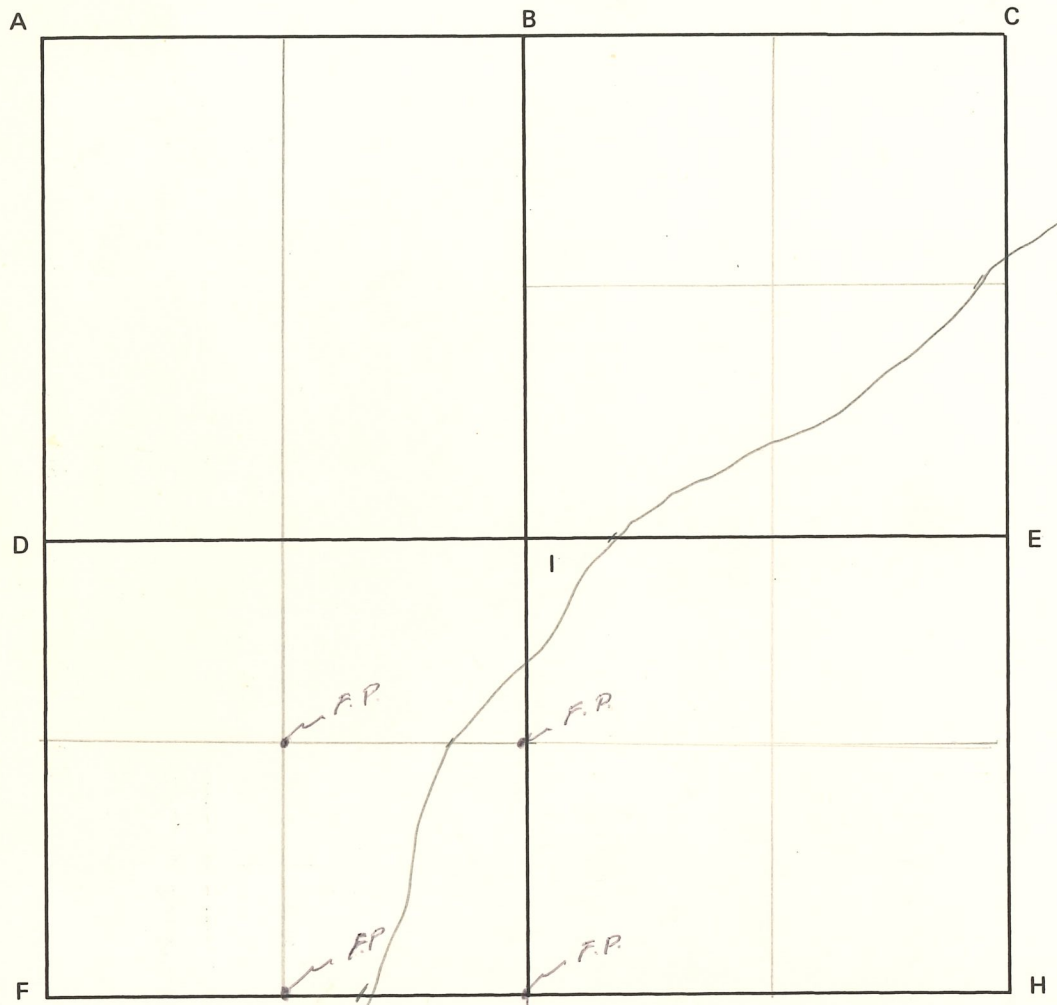
N.V.



NOTES

CORNER CODE SYSTEM
Warrick County

NOTES



□ STONE IN
SPENCER CO.
MAD BY SWC SIGN