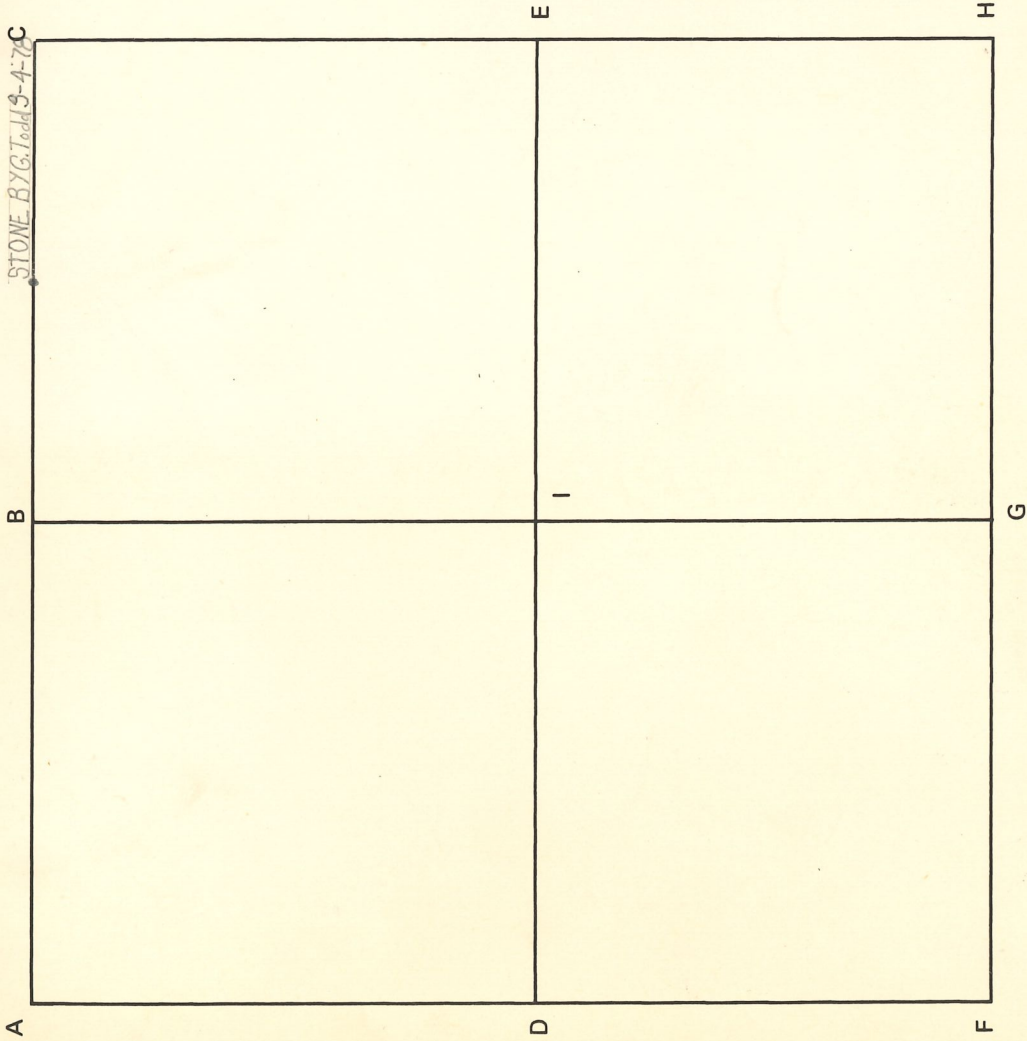


Section 1 Township 4 South Range 8 West 2nd F

CORNER CODE SYSTEM
Warrick County

STONE BY G. T. J. 13-4-70



NOTES

CORNER RECORD
WARRICK COUNTY



DESCRIPTION:

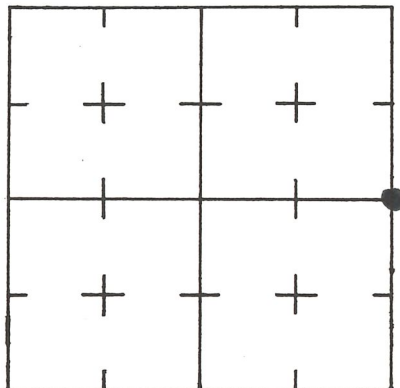
SE CORNER NE 1/4

SECTION 2, T. 4 S. R. 8 W.

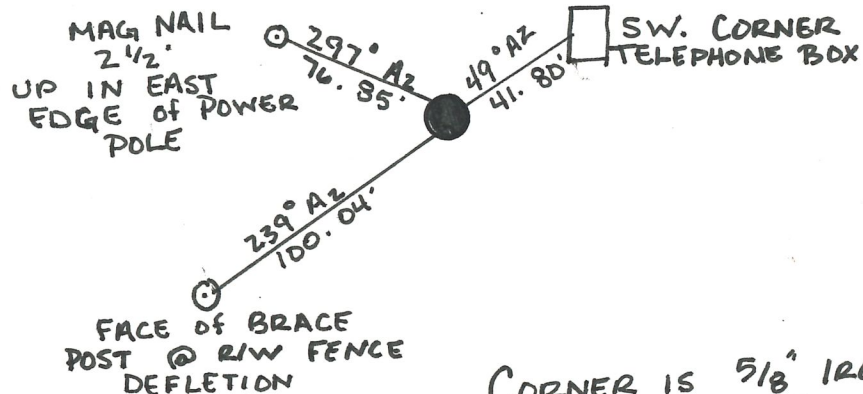
2nd PRINCIPLE MERIDIAN

WARRICK COUNTY SURVEYOR
KARAN HARGRAVE-BARNHILL

INDICATE CORNER REFERENCED



DESCRIBE CORNER REFERENCED



CORNER IS 5/8" IRON PIN
5.0 SOUTH OF C.L.
HWY #68 + 9 WEST
OF C.L. EBY ROAD

STATE PLANE COORDINATE DATA

INDIANA ZONE: WEST

X _____

Y _____

ESTABLISHED BY:

APPROVED BY

DATE

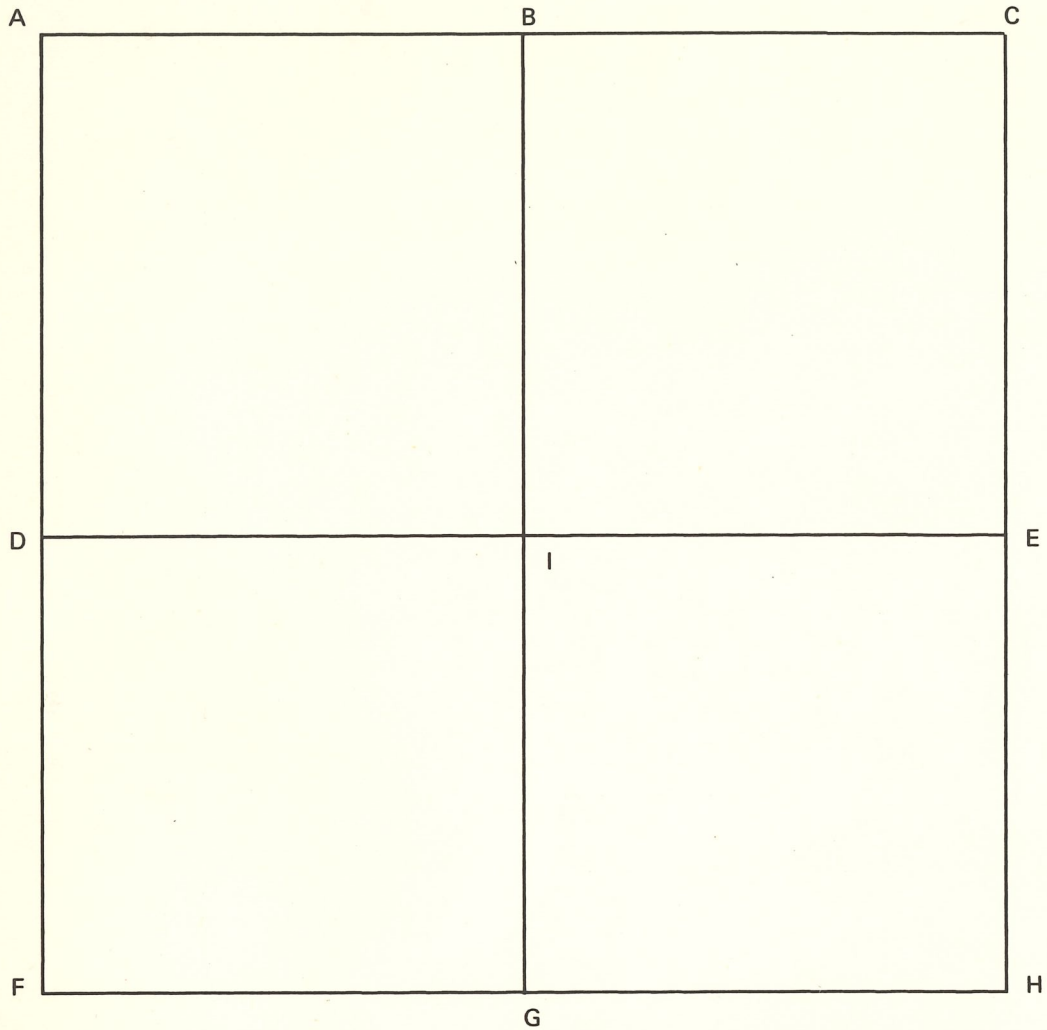
REFERENCED BY:

DATE

FRED J. KUESTER

9-4-2002

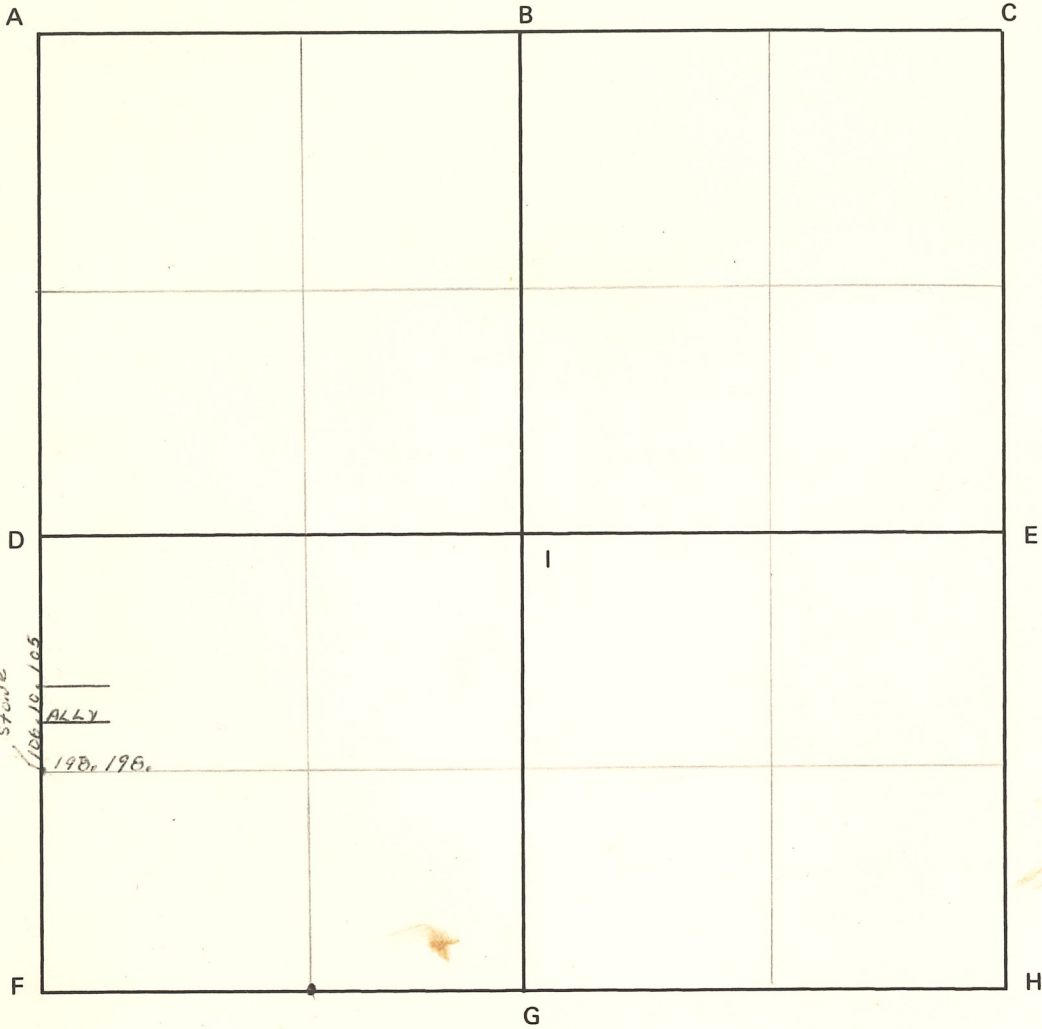
CORNER CODE SYSTEM
Warrick County



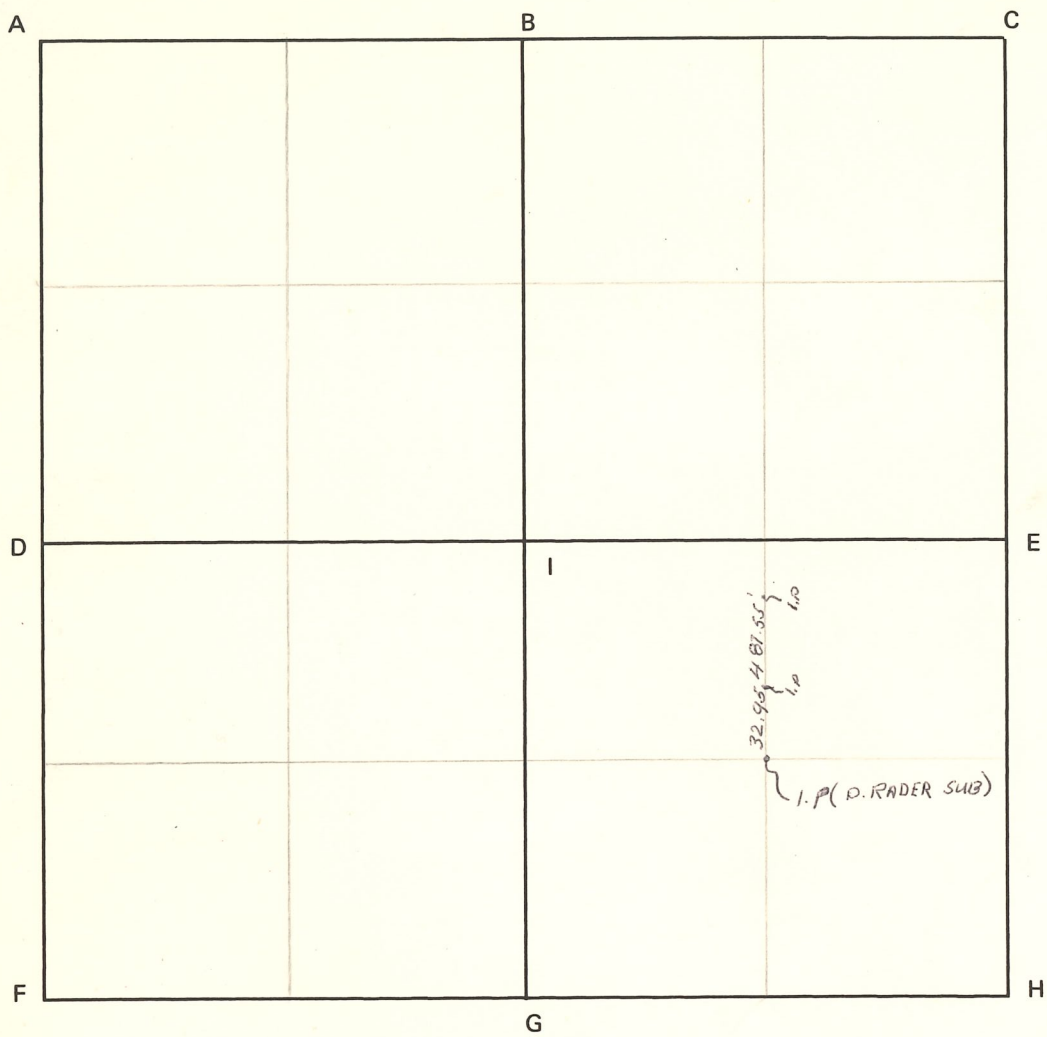
NOTES

CORNER CODE SYSTEM
Warrick County

NOTES



CORNER CODE SYSTEM
Warrick County

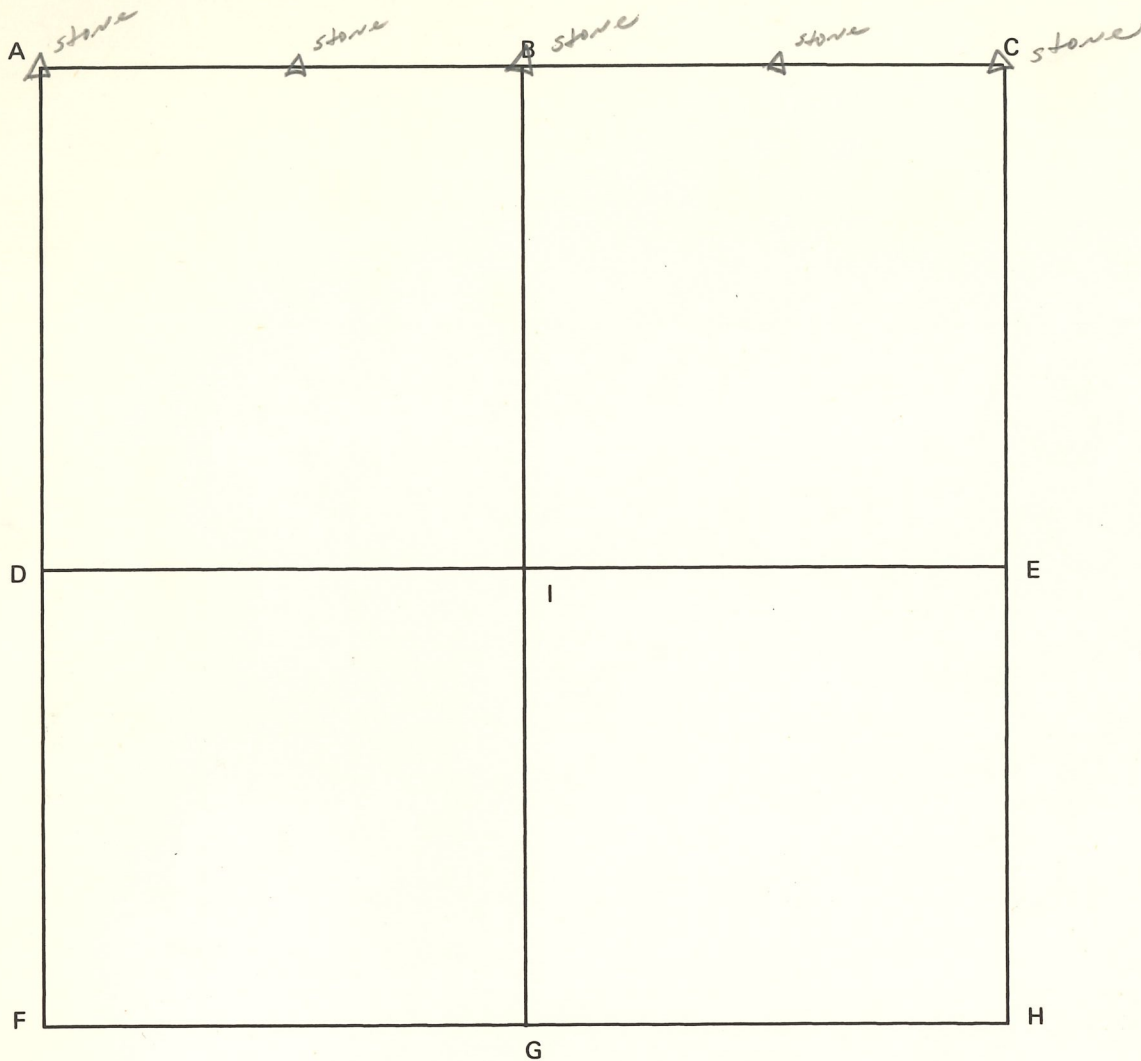


NOTES

Beckwarth's Add.
to Lynnville Cemetary
Pt. NW $\frac{1}{4}$ NE $\frac{1}{4}$ PB 1 PG 128

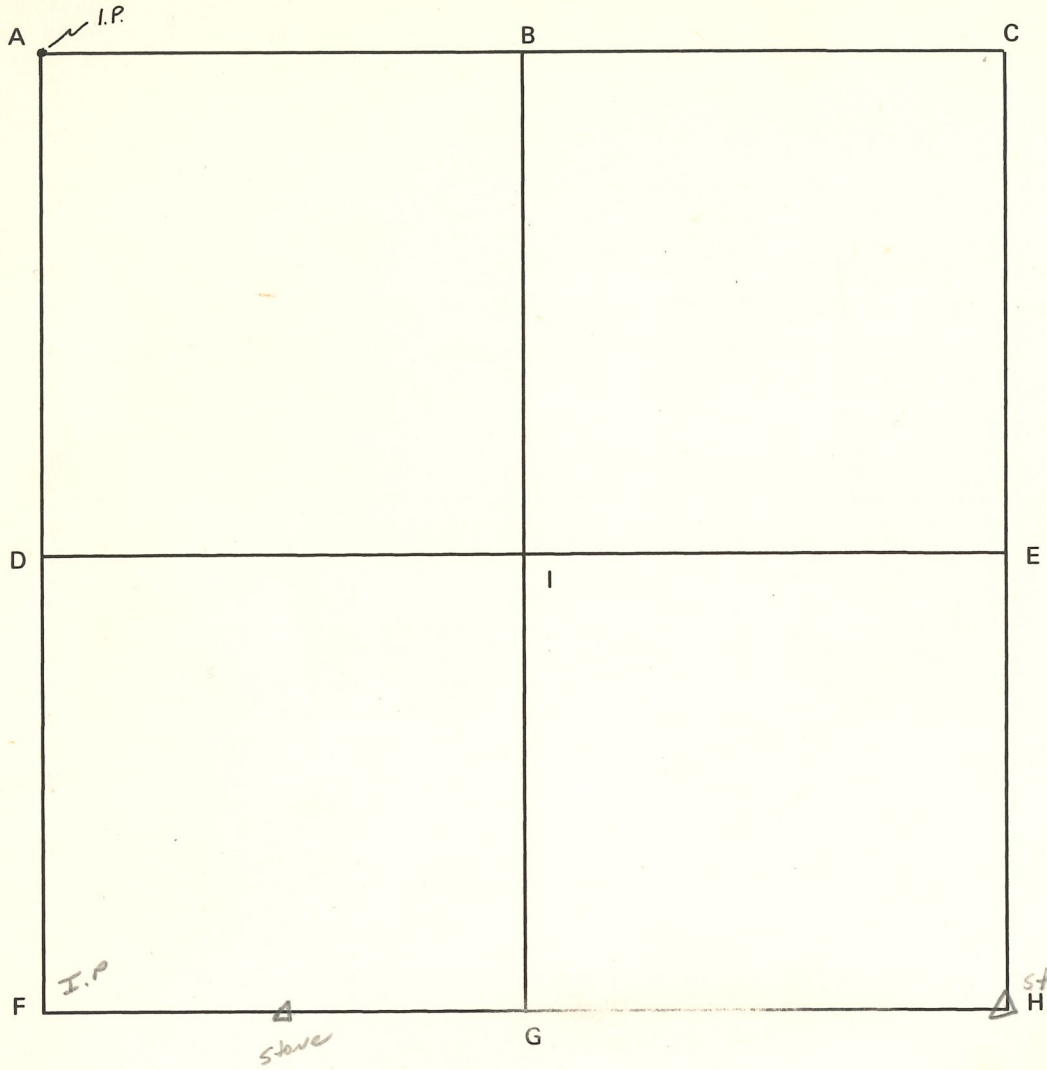
Miles Subd'n
Pt. NE $\frac{1}{4}$ PB 4 PG 427

CORNER CODE SYSTEM
Warrick County



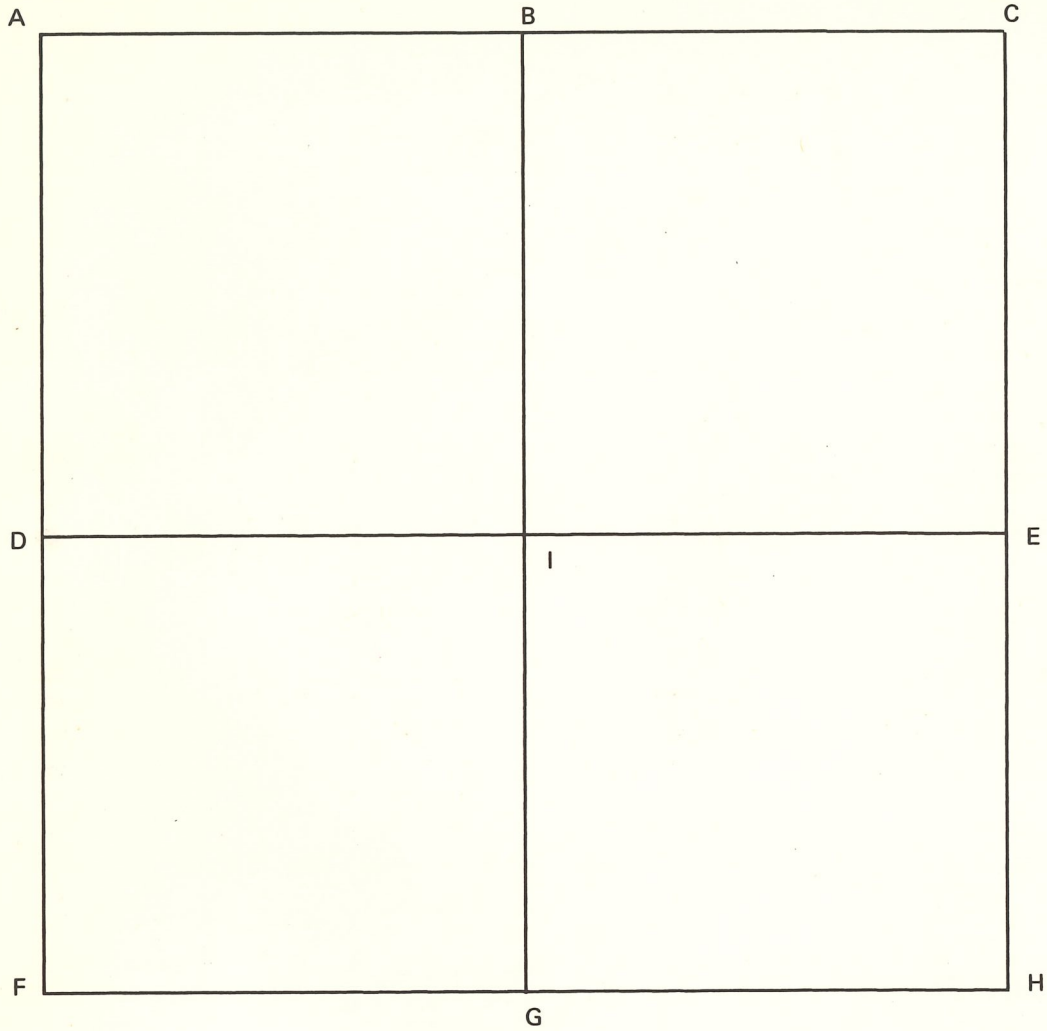
NOTES

CORNER CODE SYSTEM
Warrick County



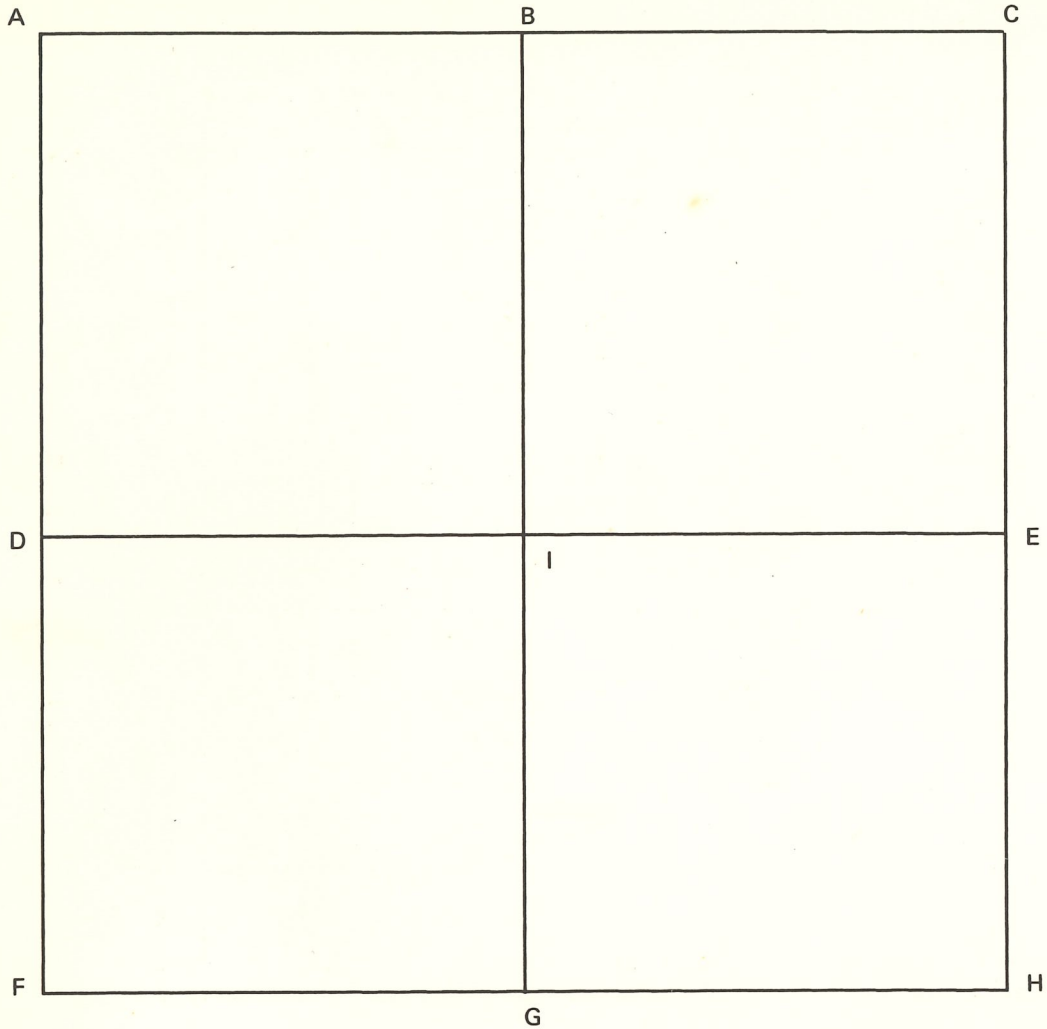
NOTES

CORNER CODE SYSTEM
Warrick County



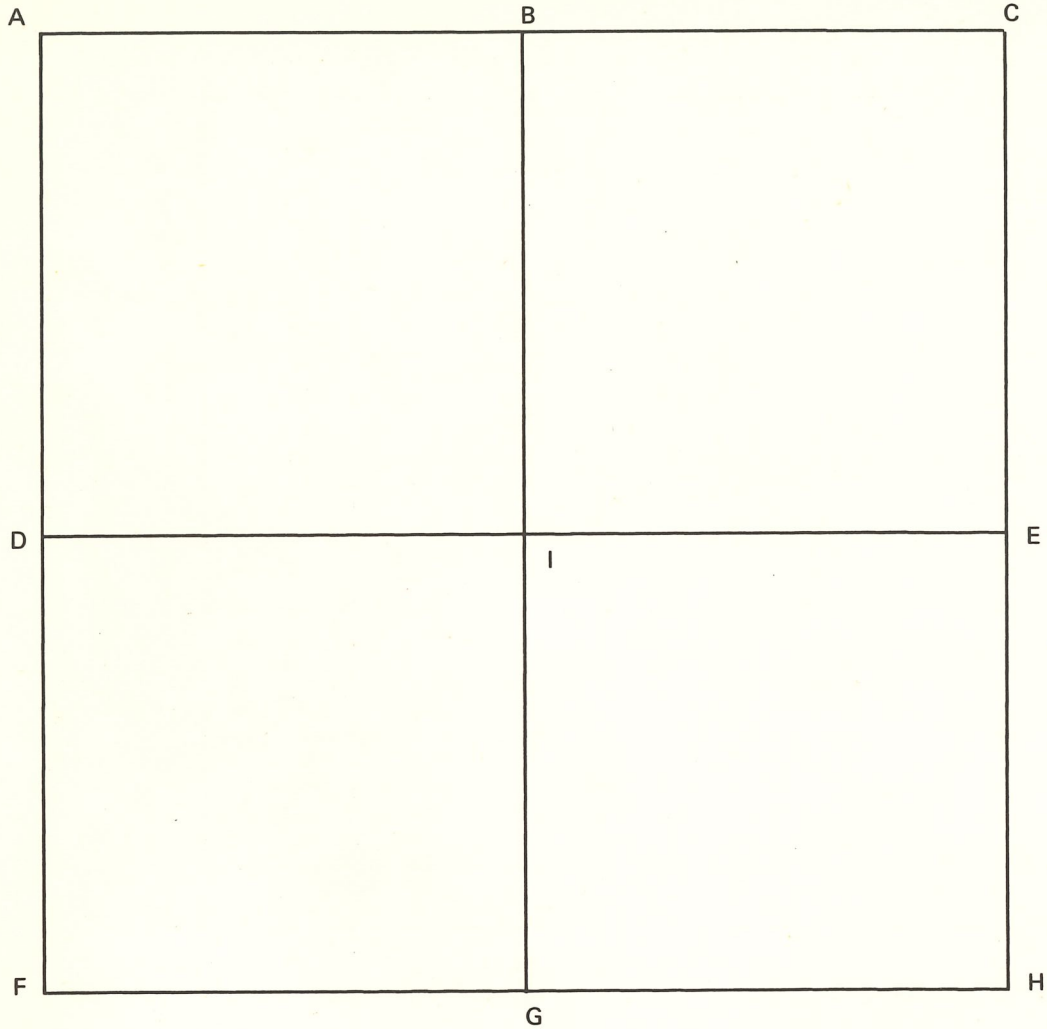
NOTES

CORNER CODE SYSTEM
Warrick County



NOTES

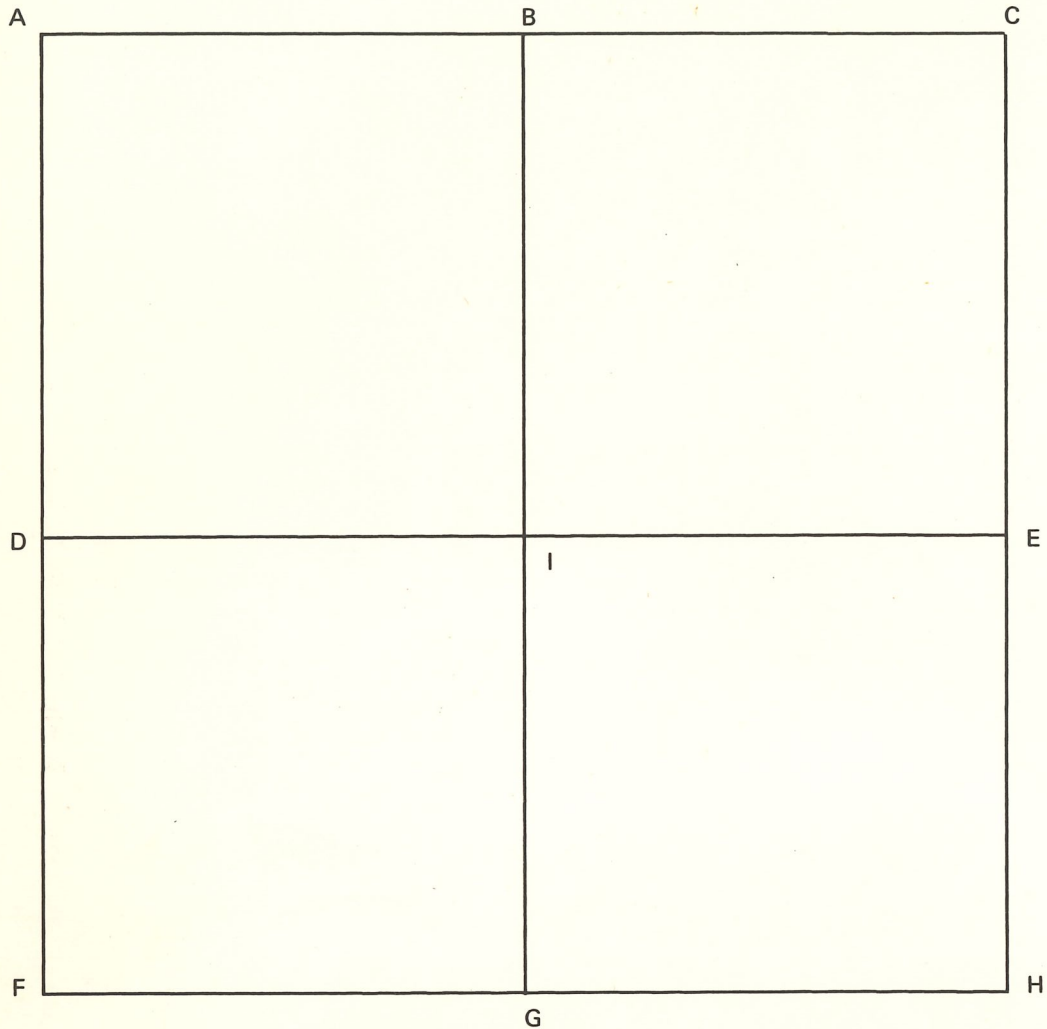
CORNER CODE SYSTEM
Warrick County



NOTES

Section 10 Township 4 South Range 8 West 2nd F

CORNER CODE SYSTEM
Warrick County



NOTES

CORNER RECORD
WARRICK COUNTY

DESCRIPTION:

SE CORNER SW 1/4 SE 1/4

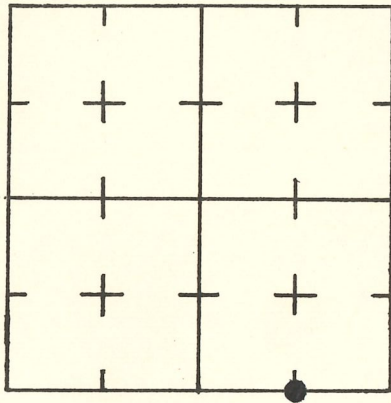
SECTION 10, T. 4 S. R. 8 W.

2nd PRINCIPAL MERIDIAN

WARRICK COUNTY SURVEYOR
MICHAEL F. FELDBUSCH, L.S.

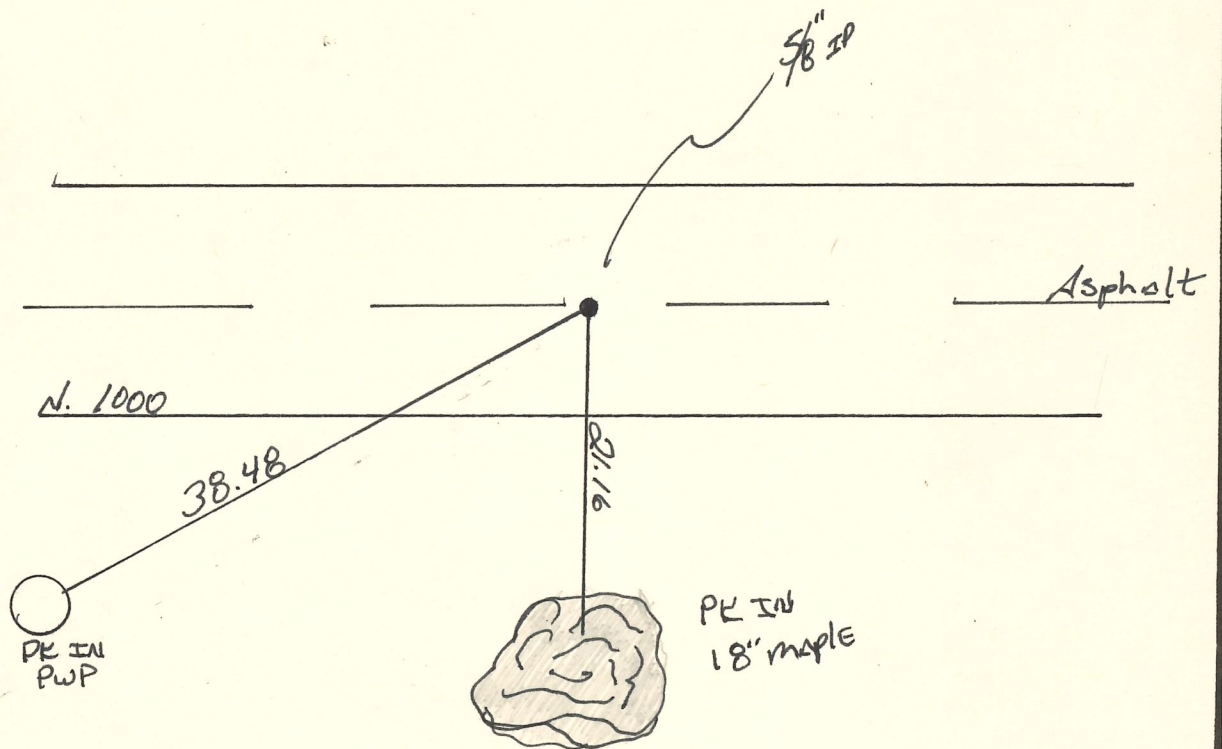


INDICATE CORNER REFERENCED



DESCRIBE CORNER REFERENCED

N.V.



STATE PLANE COORDINATE DATA

INDIANA ZONE: WEST

X _____

Y _____

ESTABLISHED BY:

APPROVED BY

DATE

REFERENCED BY:

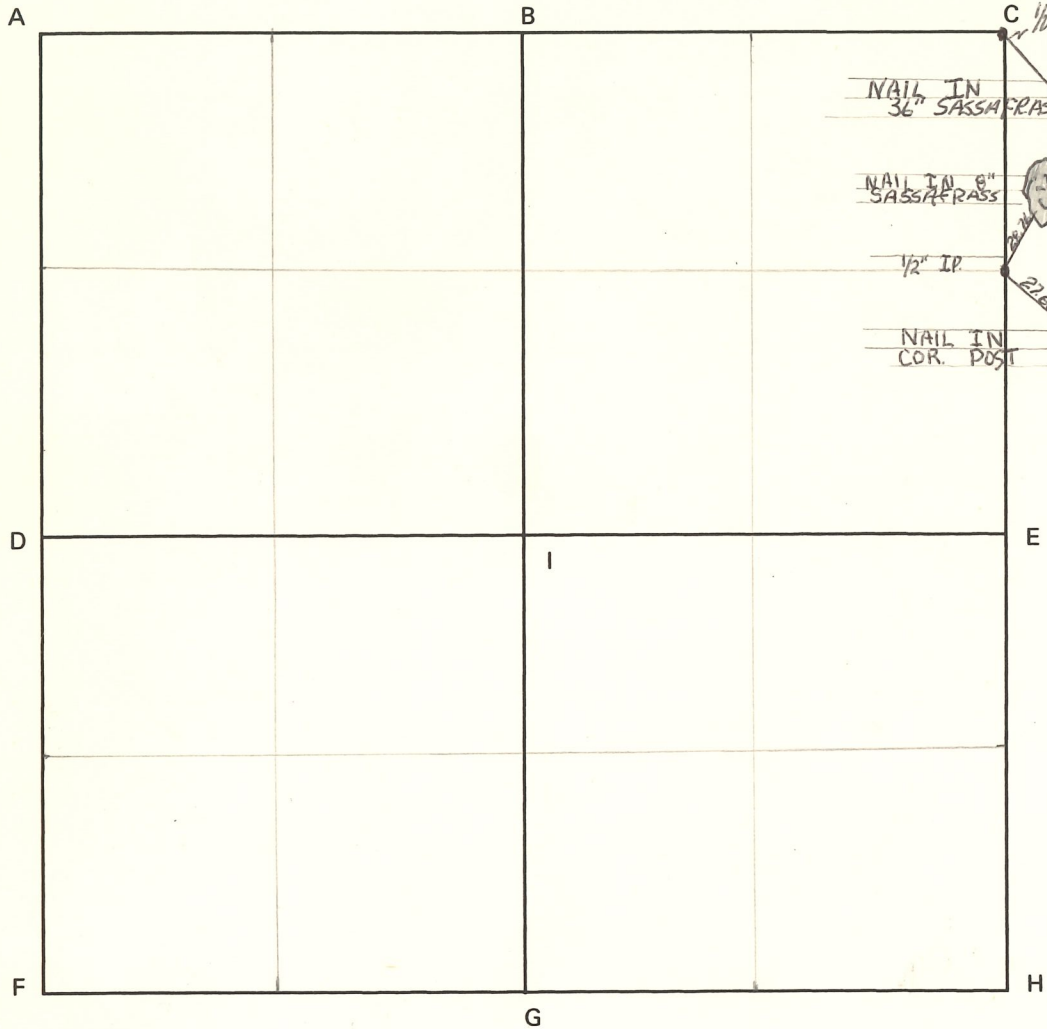
DATE

Larry Beck

6-1-83

CORNER CODE SYSTEM
Warrick County

N.Y.



NOTES

C. NO OTHER REFERENCE'S AVAILABLE

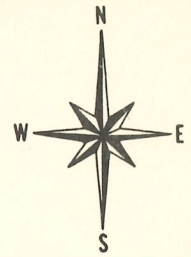
CORNER RECORD
WARRICK COUNTY

DESCRIPTION:

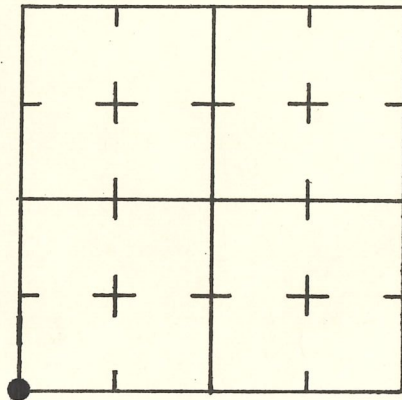
SW CORNER SW 1/4
SECTION 12, T. 4 S.
2nd PRINCIPAL MERIDIAN

R. 8 W.

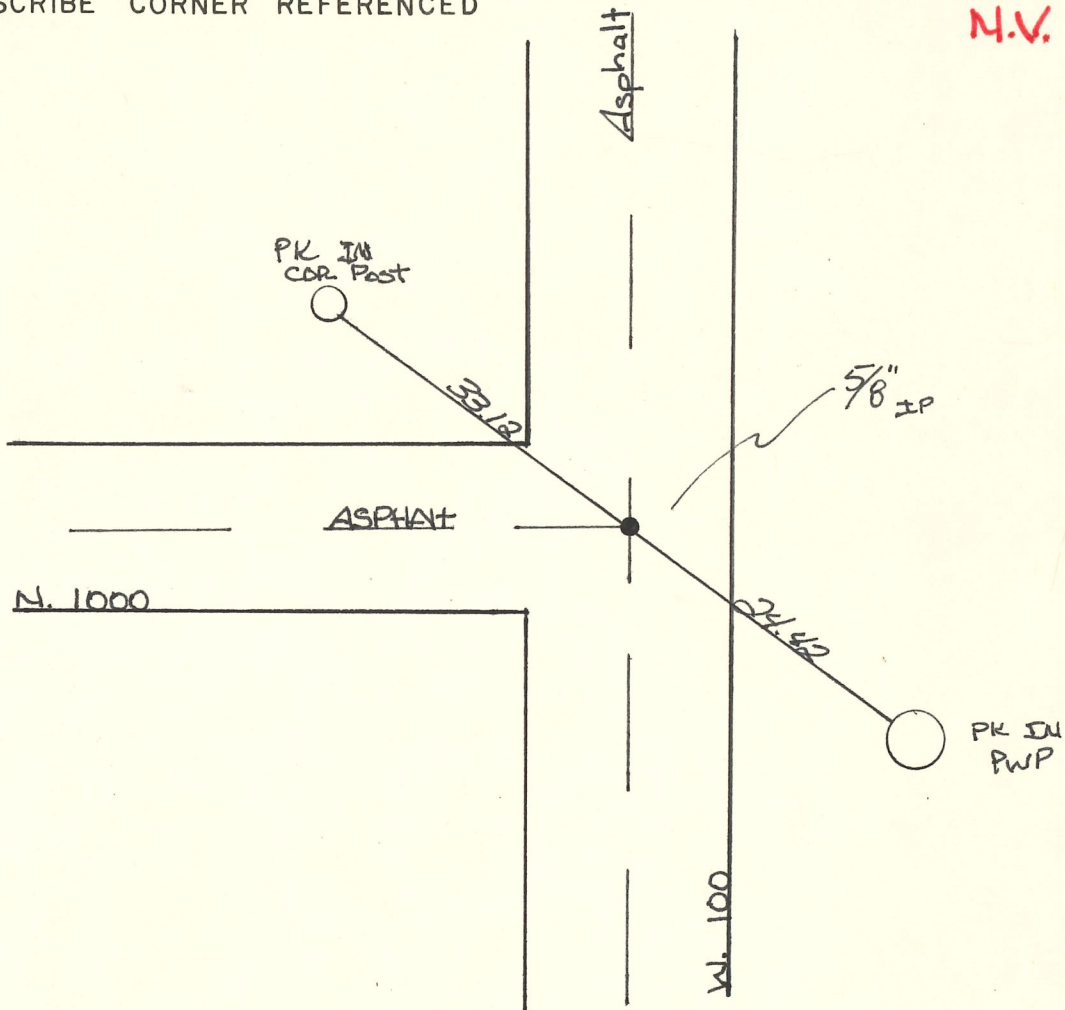
WARRICK COUNTY SURVEYOR
MICHAEL F. FELDBUSCH, L.S.



INDICATE CORNER REFERENCED



DESCRIBE CORNER REFERENCED



STATE PLANE COORDINATE DATA

INDIANA ZONE: WEST

X _____

Y _____

ESTABLISHED BY:

APPROVED BY

DATE

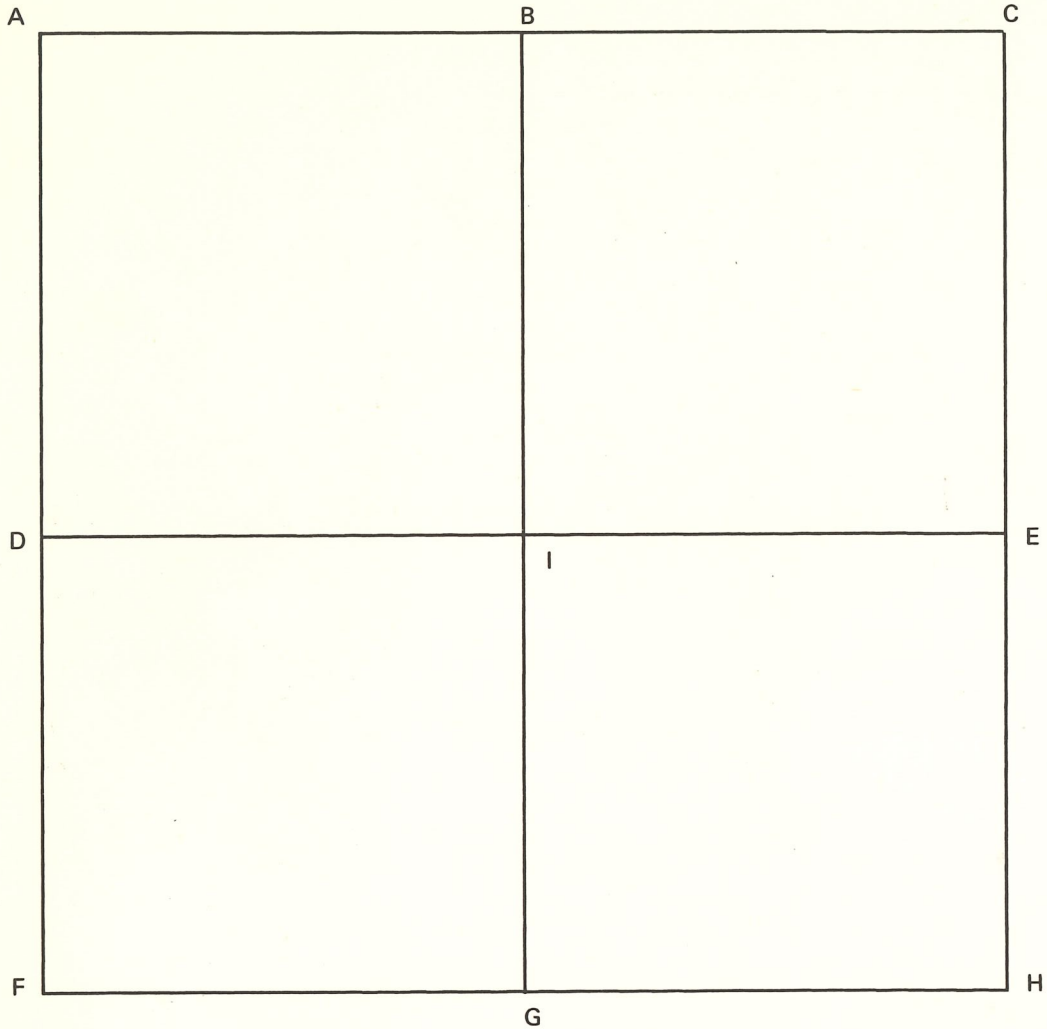
REFERENCED BY:

DATE

Gary Beck

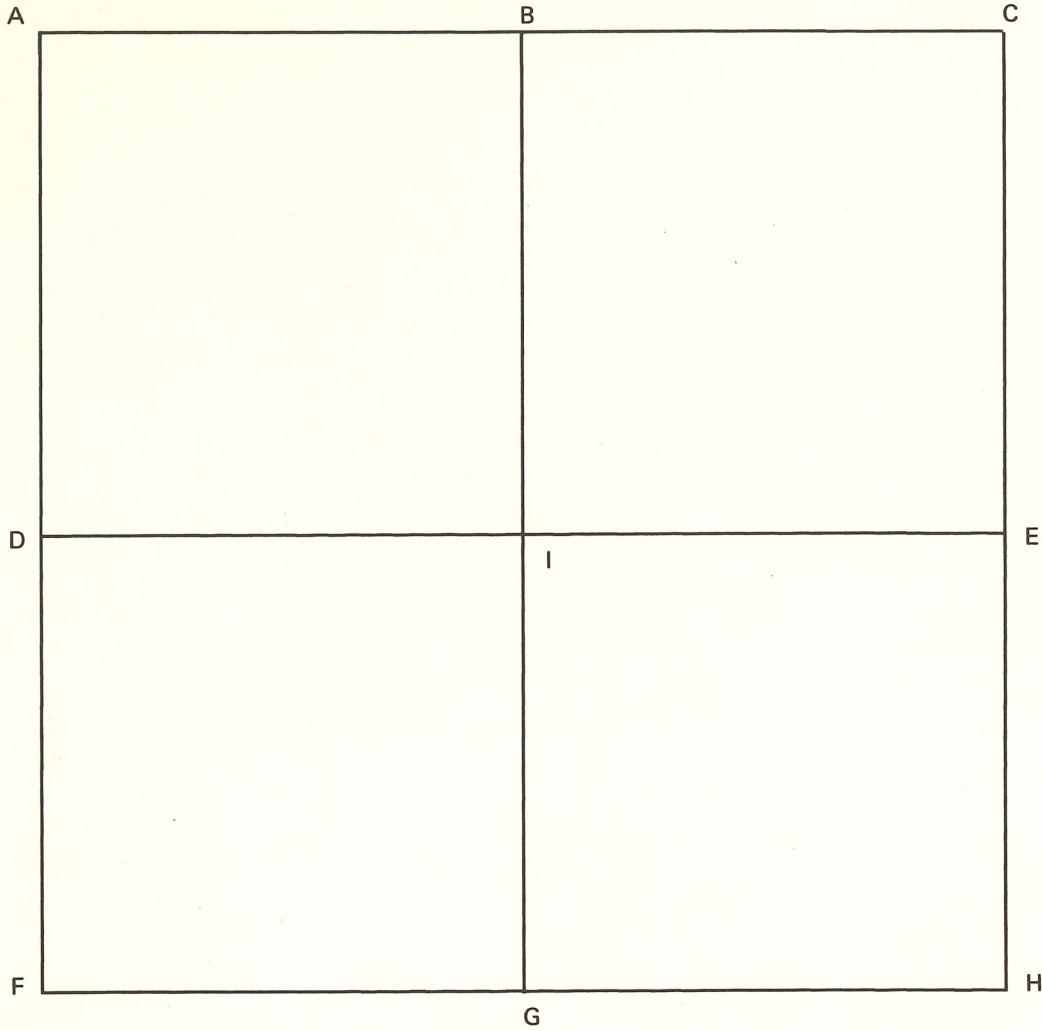
6-1-83

CORNER CODE SYSTEM
Warrick County



NOTES

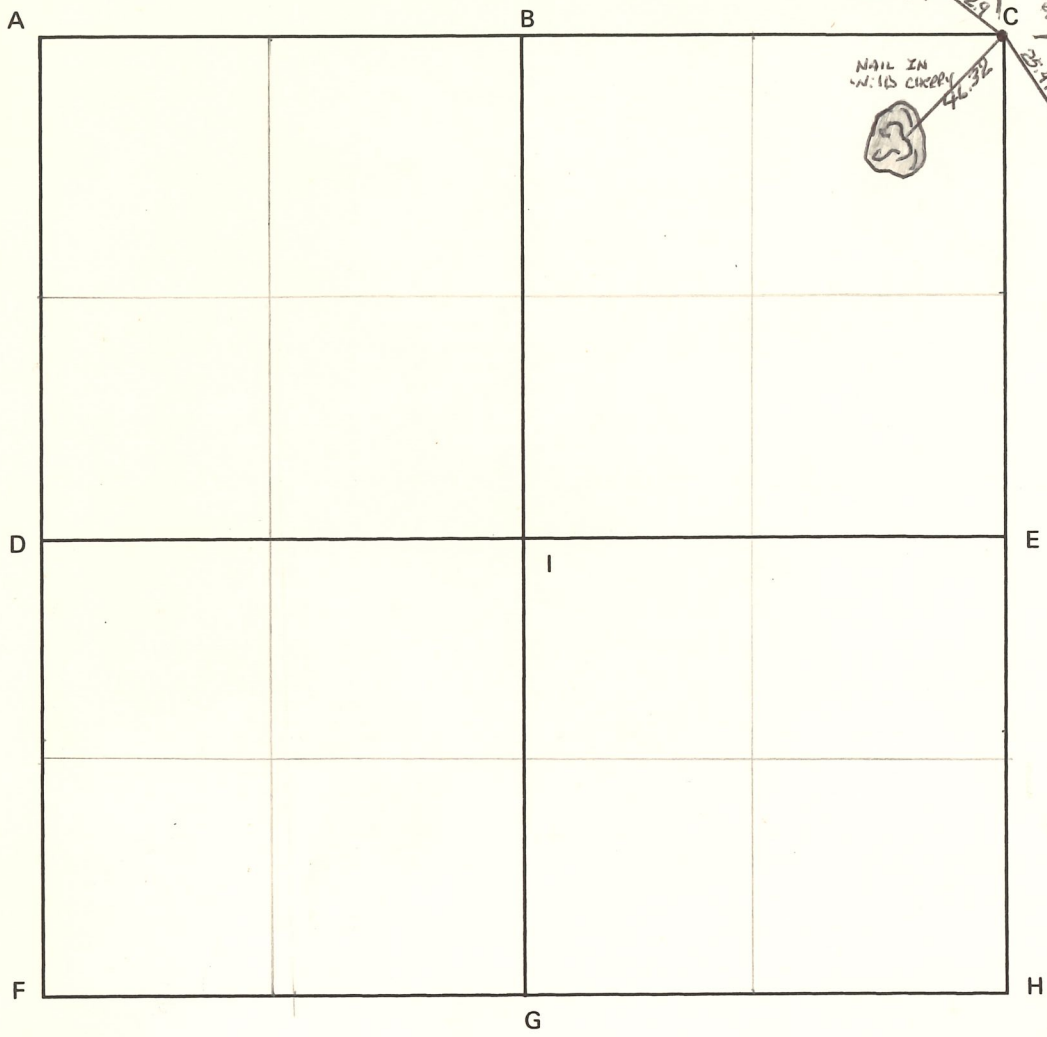
CORNER CODE SYSTEM
Warrick County



NOTES

CORNER CODE SYSTEM
Warrick County

N.V.

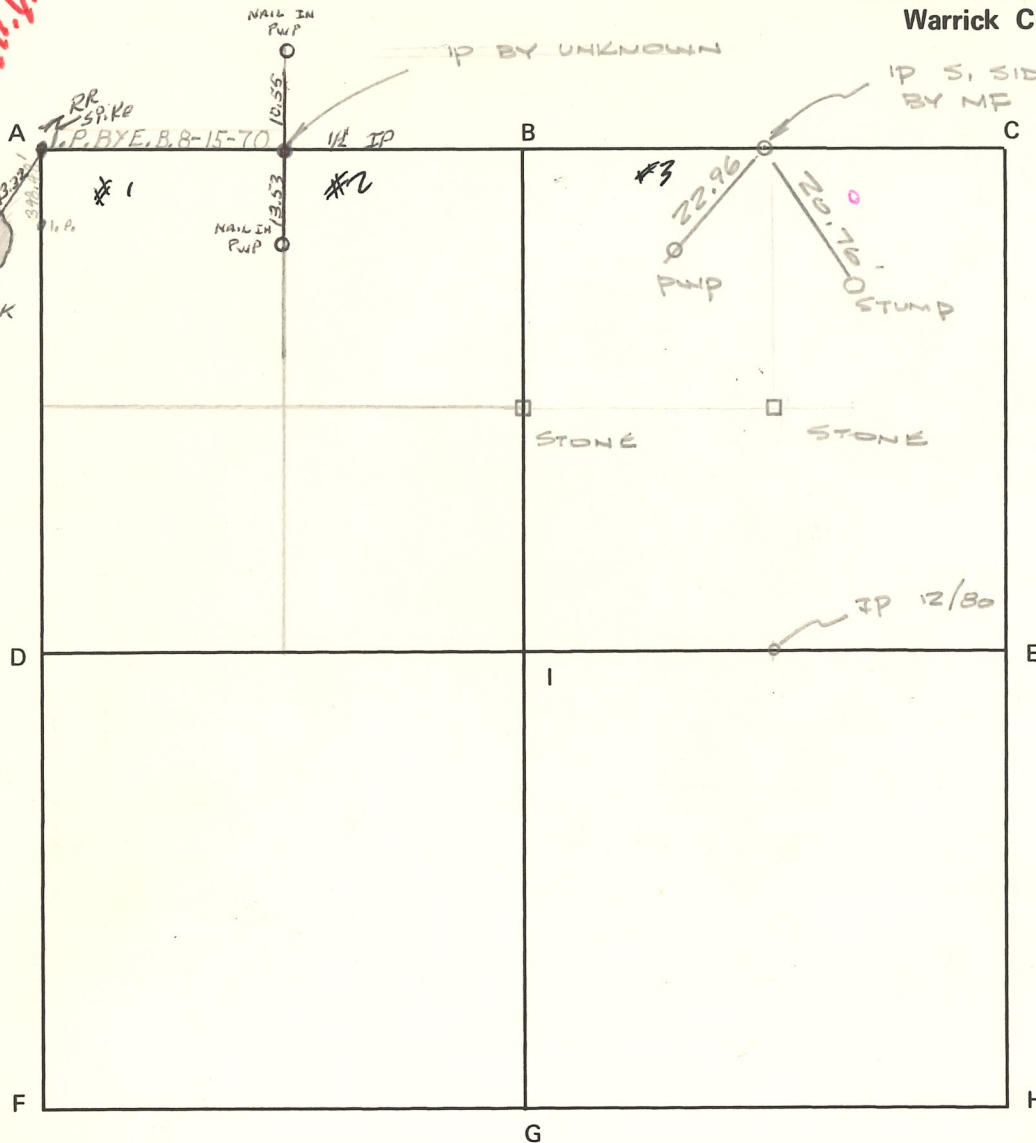


NOTES

11/12

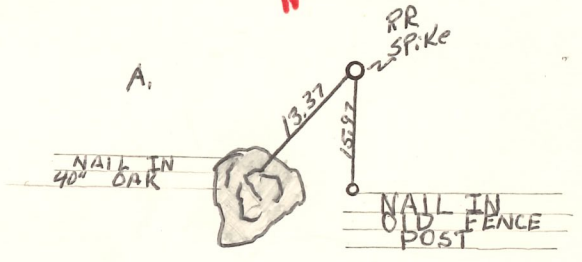
CORNER CODE SYSTEM
Warrick County

N.W.

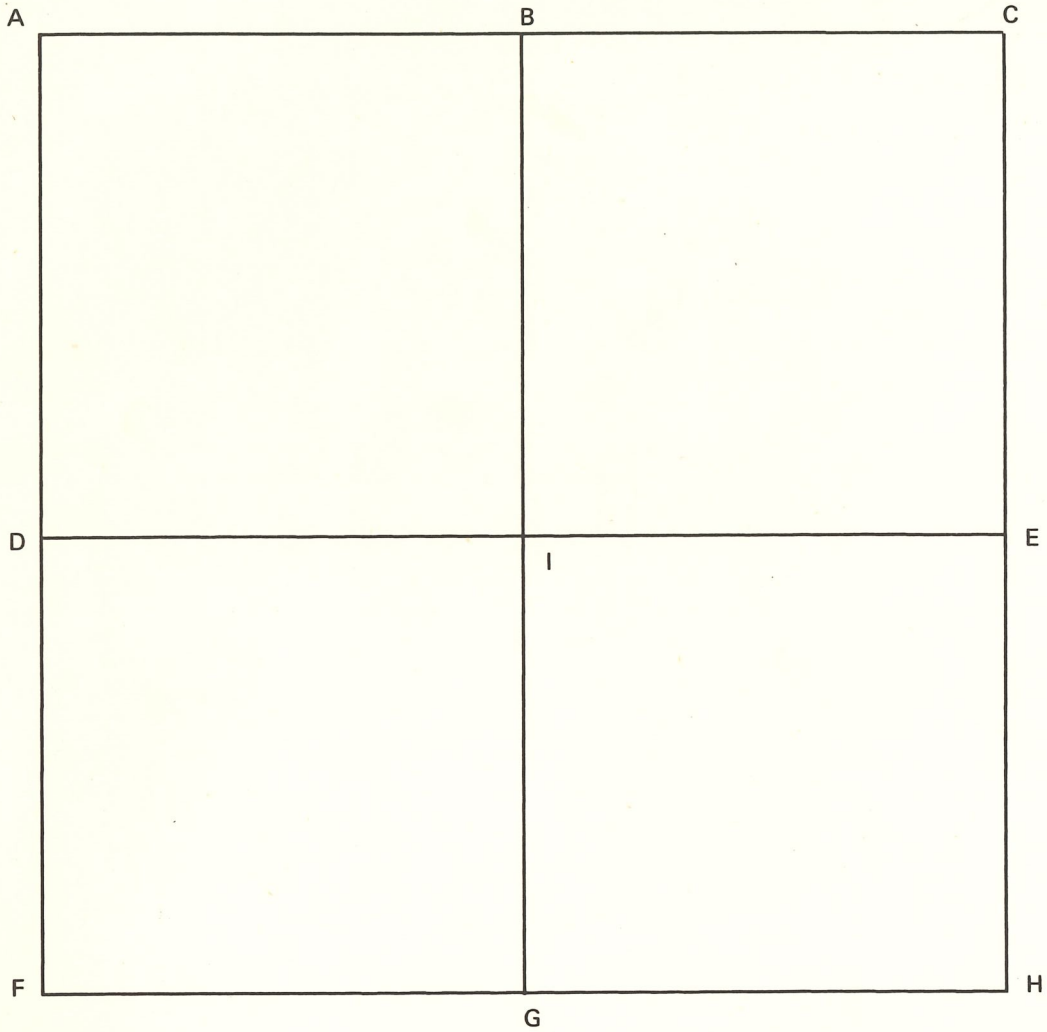


N.W.

NOTES

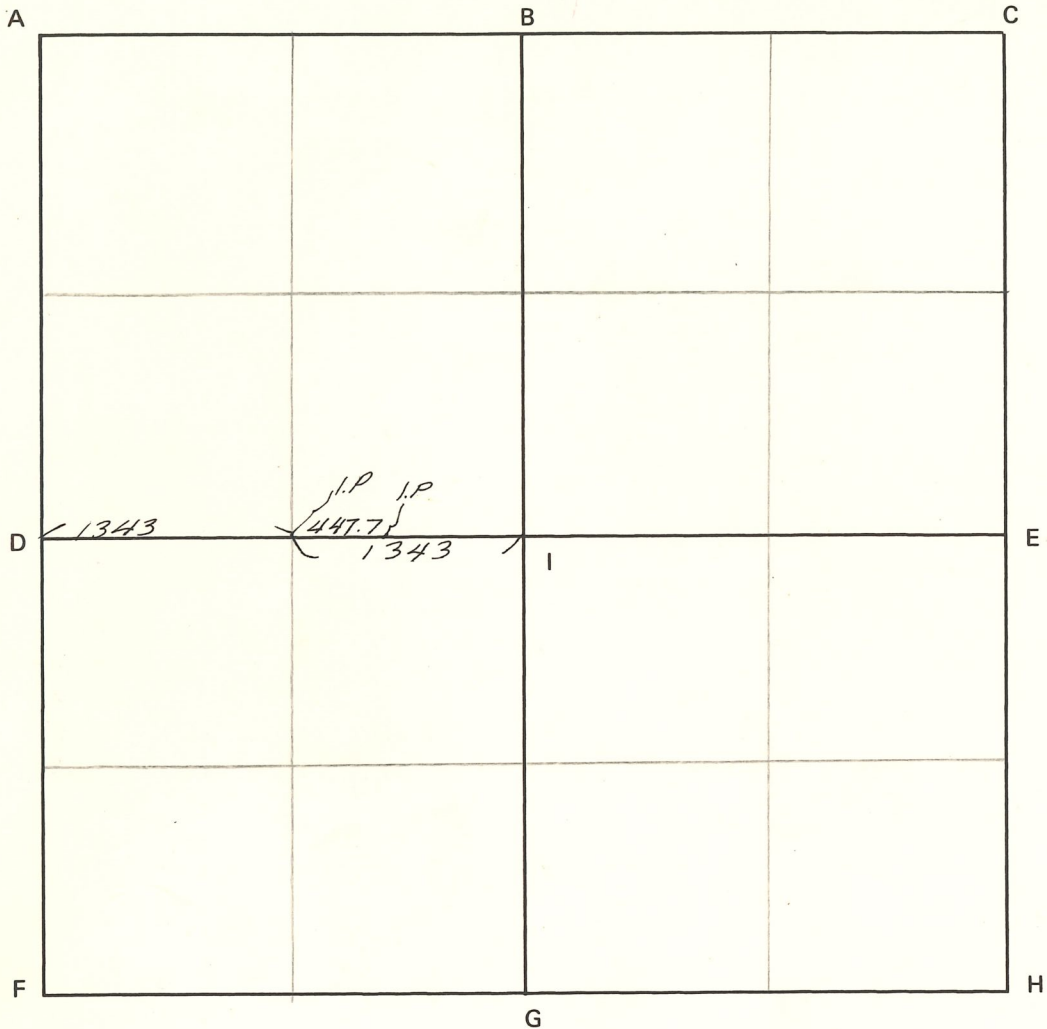


CORNER CODE SYSTEM
Warrick County



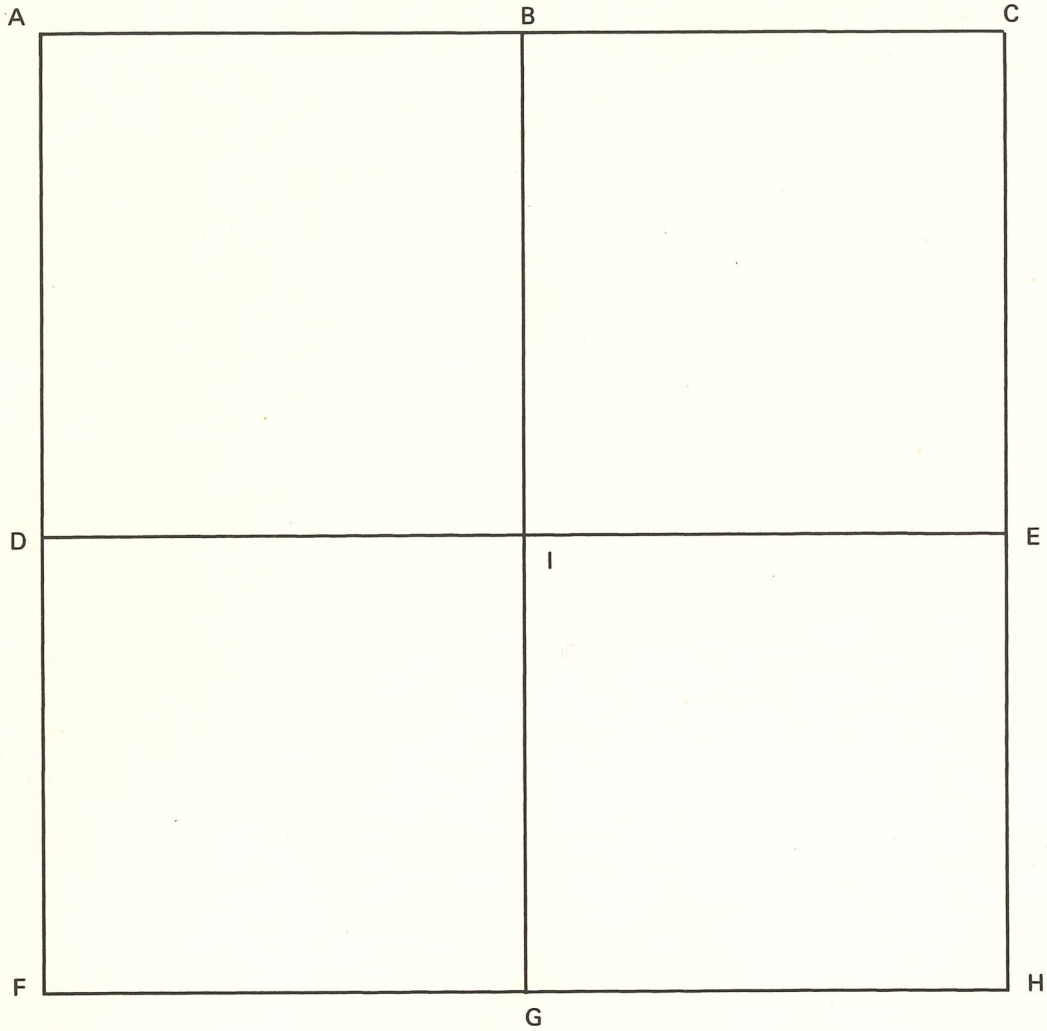
NOTES

CORNER CODE SYSTEM
Warrick County



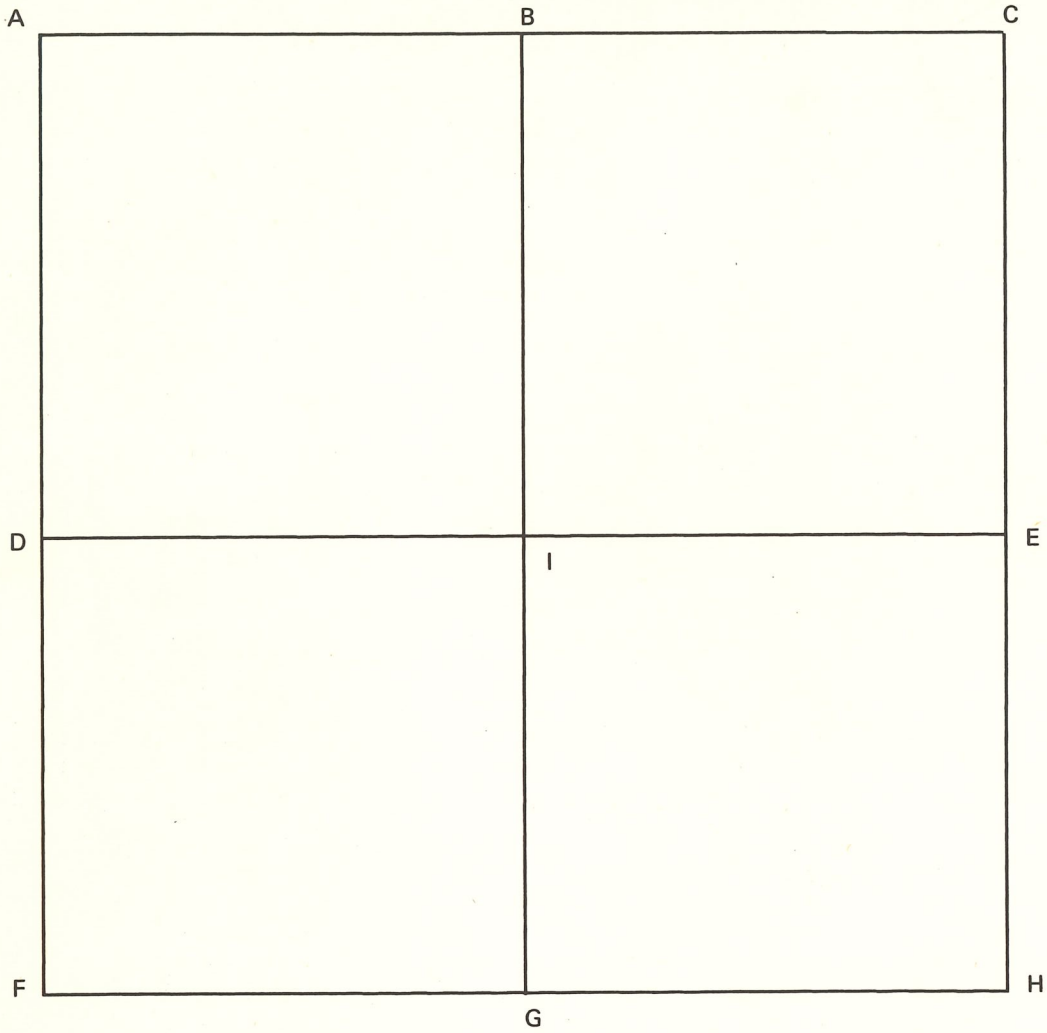
NOTES

CORNER CODE SYSTEM
Warrick County



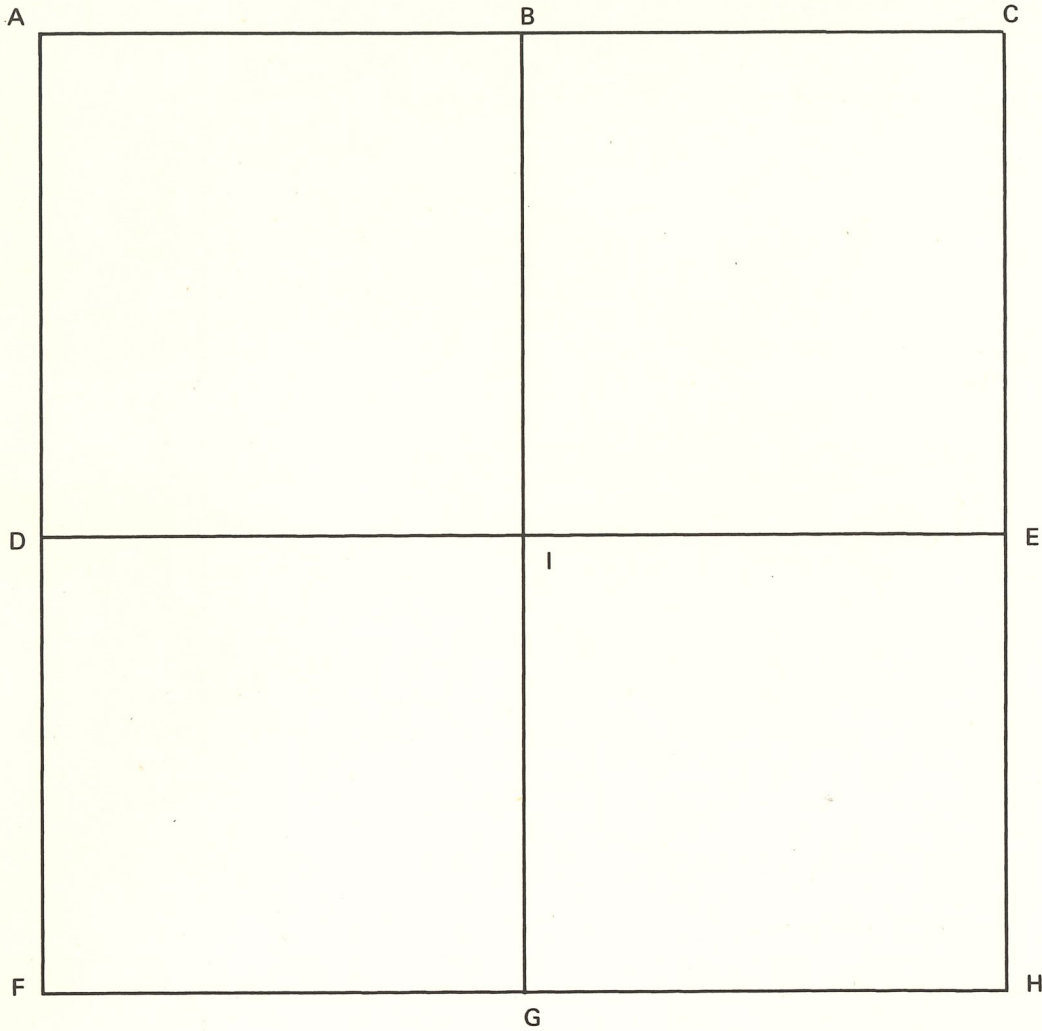
NOTES

CORNER CODE SYSTEM
Warrick County



NOTES

CORNER CODE SYSTEM
Warrick County



NOTES

CORNER RECORD
WARRICK COUNTY

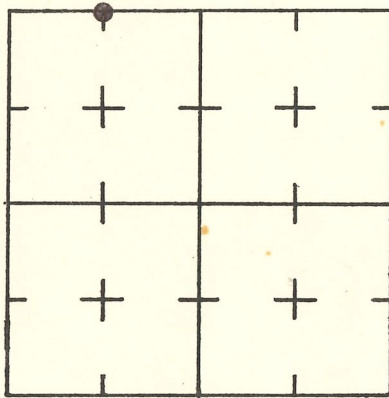
DESCRIPTION:

NE CORNER NW 1/4 NW 1/4
SECTION 20, T. 4 S. R. 8 W.
2nd PRINCIPAL MERIDIAN

WARRICK COUNTY SURVEYOR
MICHAEL F. FELDBUSCH, L.S.

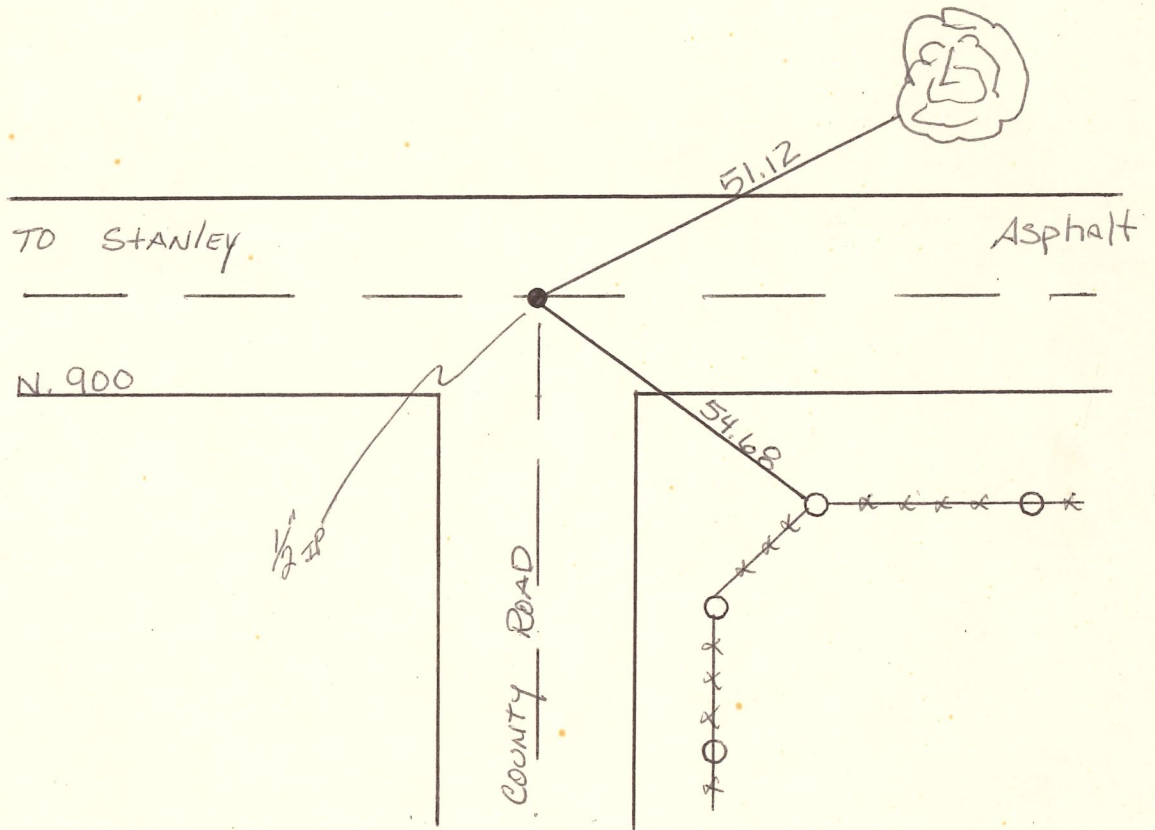


INDICATE CORNER REFERENCED



DESCRIBE CORNER REFERENCED

NOT VERIFIED



STATE PLANE COORDINATE DATA

INDIANA ZONE: WEST

X _____

Y _____

ESTABLISHED BY:

APPROVED BY

DATE

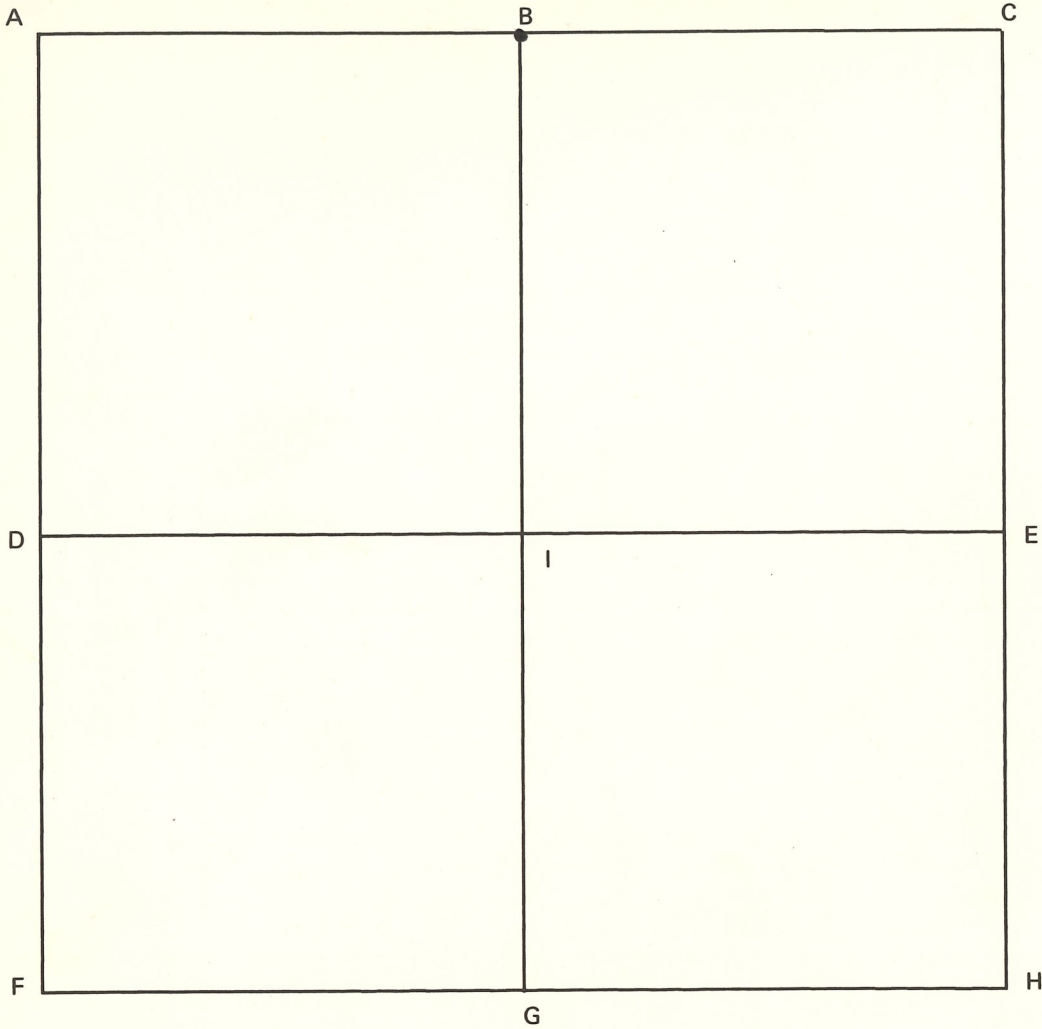
REFERENCED BY:

DATE

Jay Beck

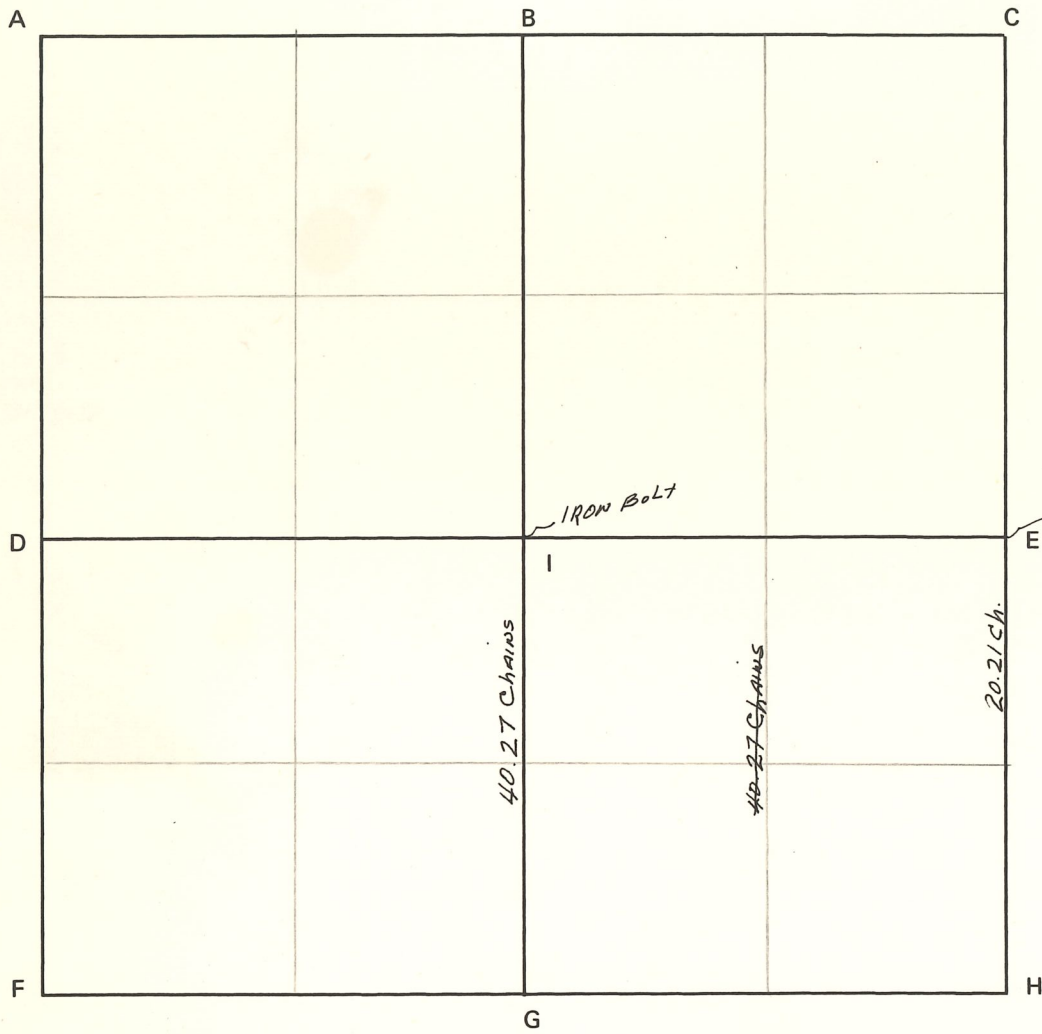
2-12-84

CORNER CODE SYSTEM
Warrick County



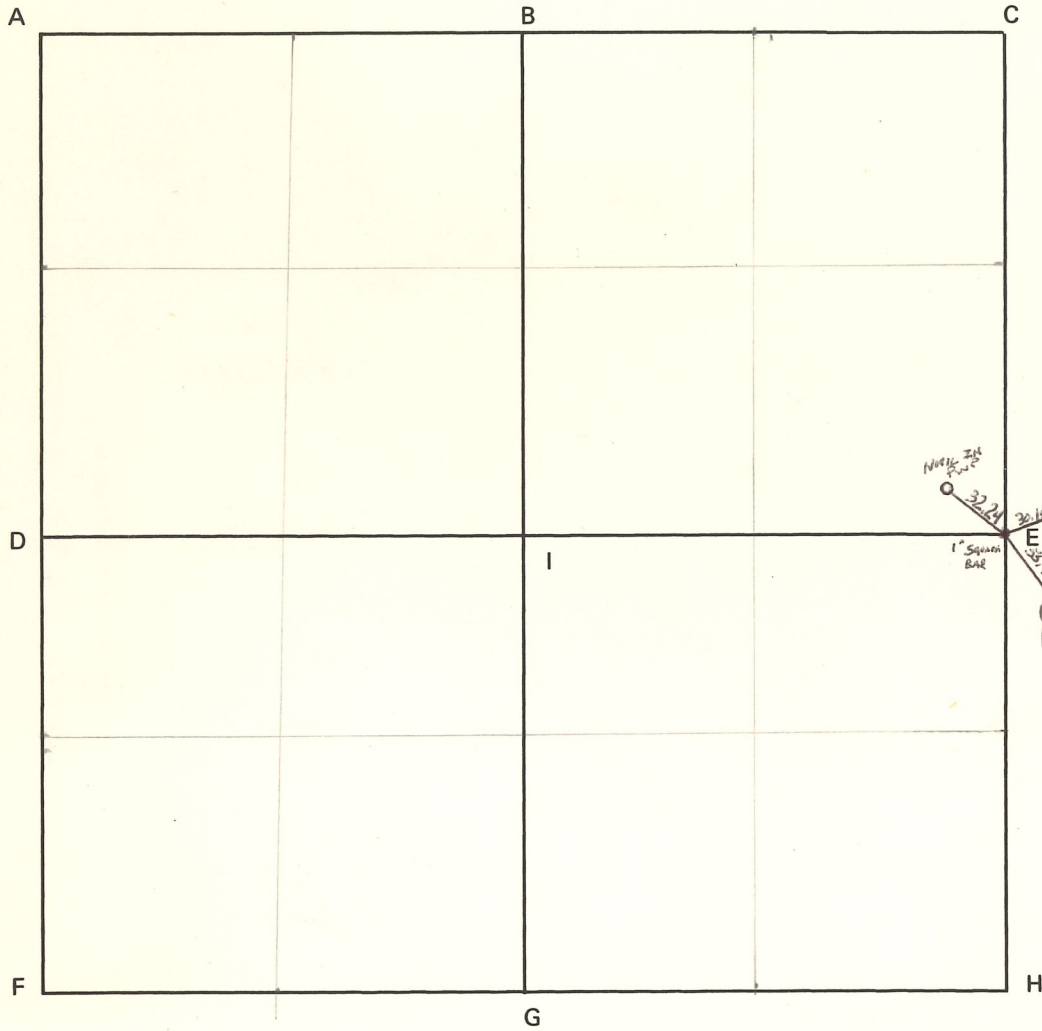
NOTES

CORNER CODE SYSTEM
Warrick County



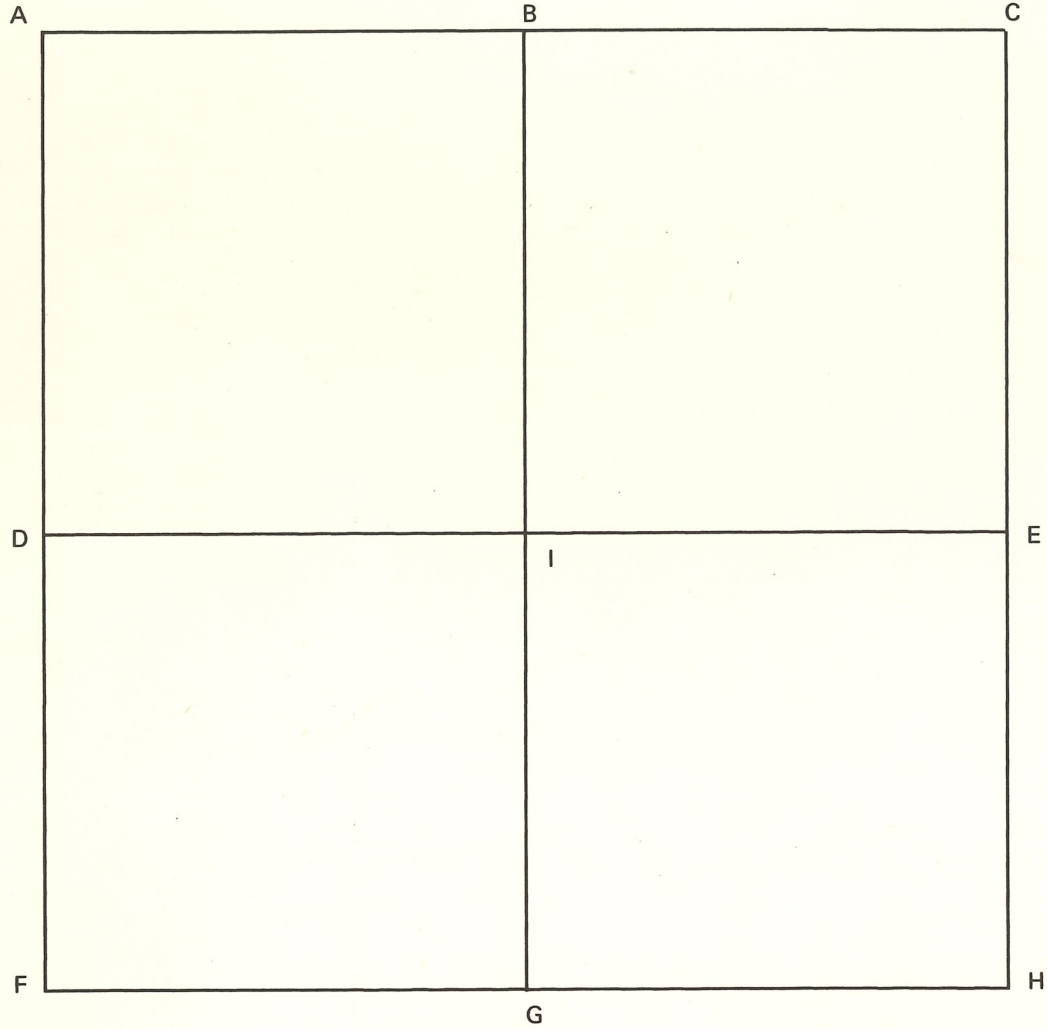
NOTES

CORNER CODE SYSTEM
Warrick County



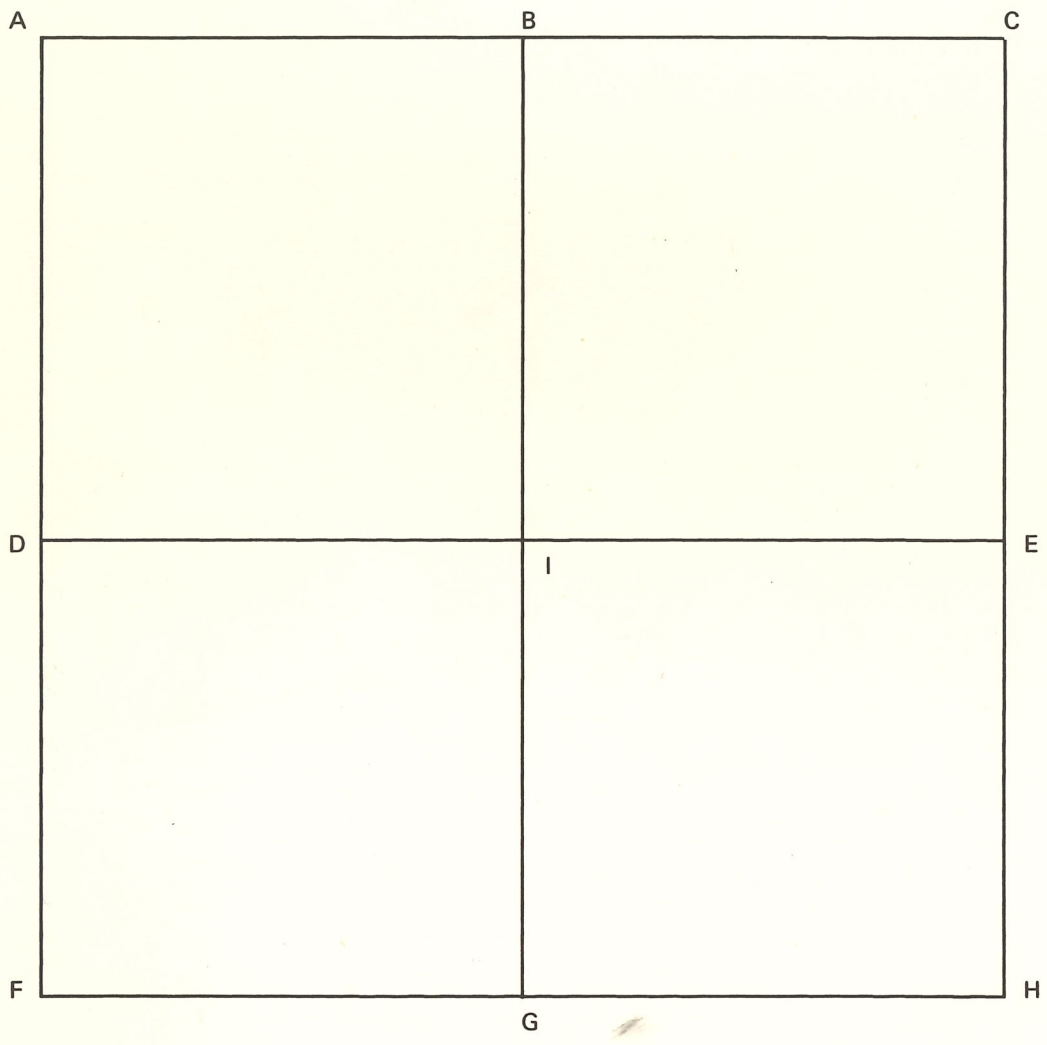
NOTES

CORNER CODE SYSTEM
Warrick County



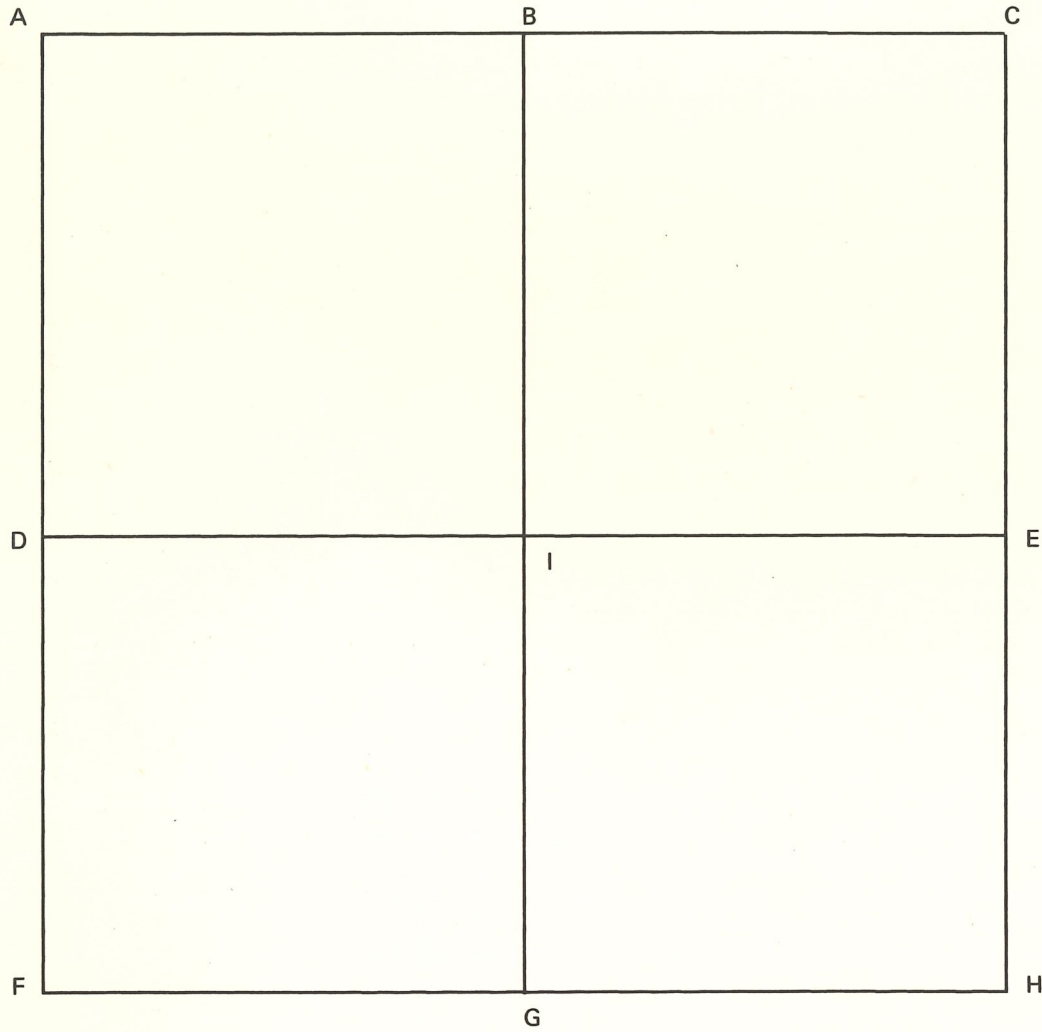
NOTES

CORNER CODE SYSTEM
Warrick County



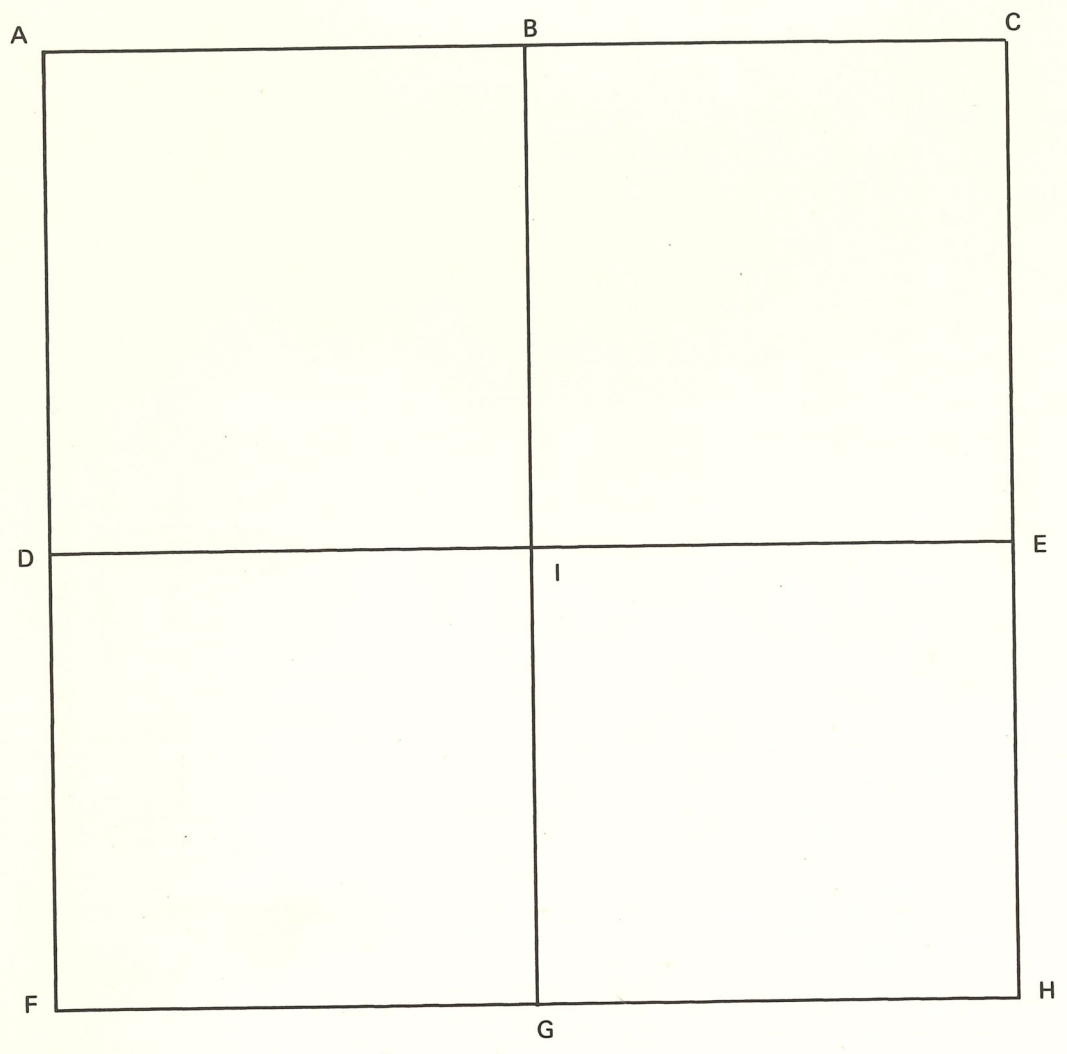
NOTES

CORNER CODE SYSTEM
Warrick County



NOTES

CORNER CODE SYSTEM
Warrick County



NOTES

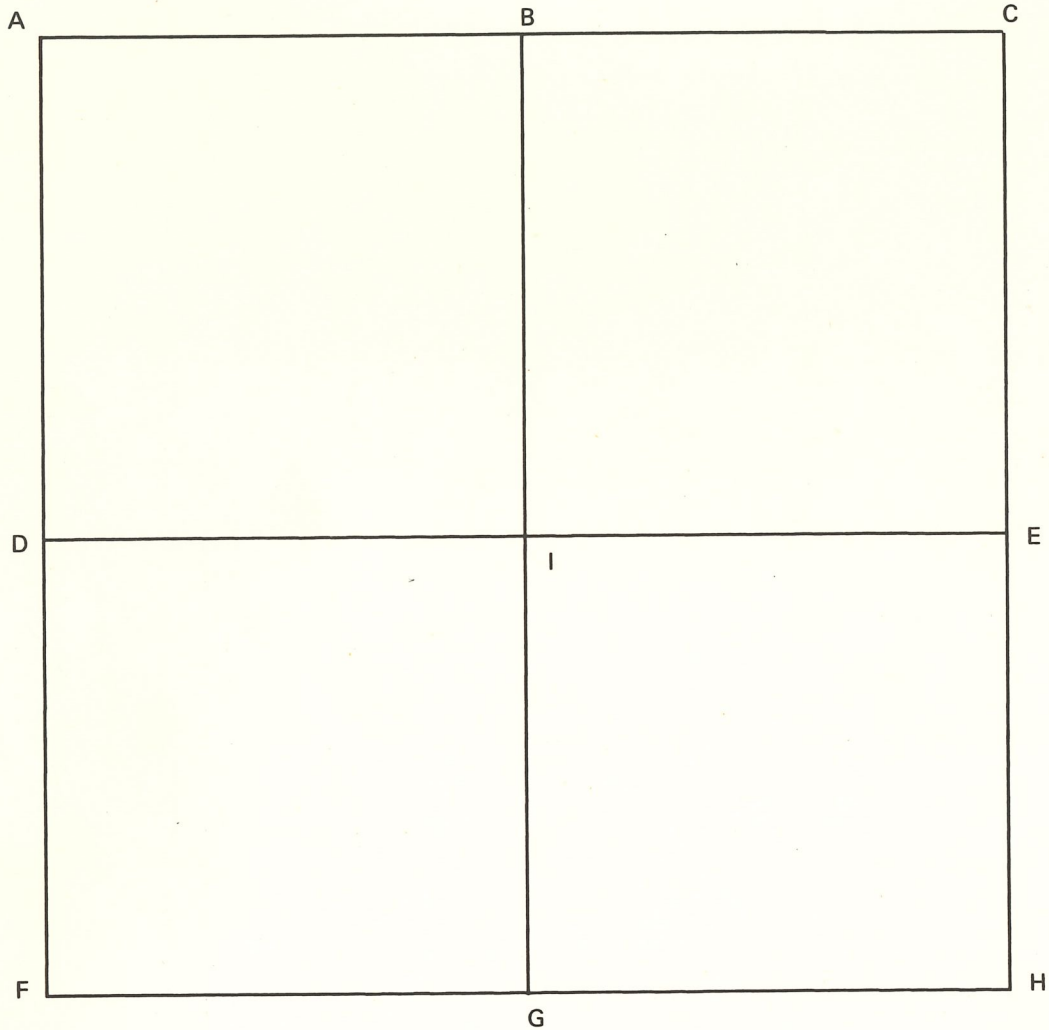
Section 28

Township 4 South

Range 8 West

2nd P

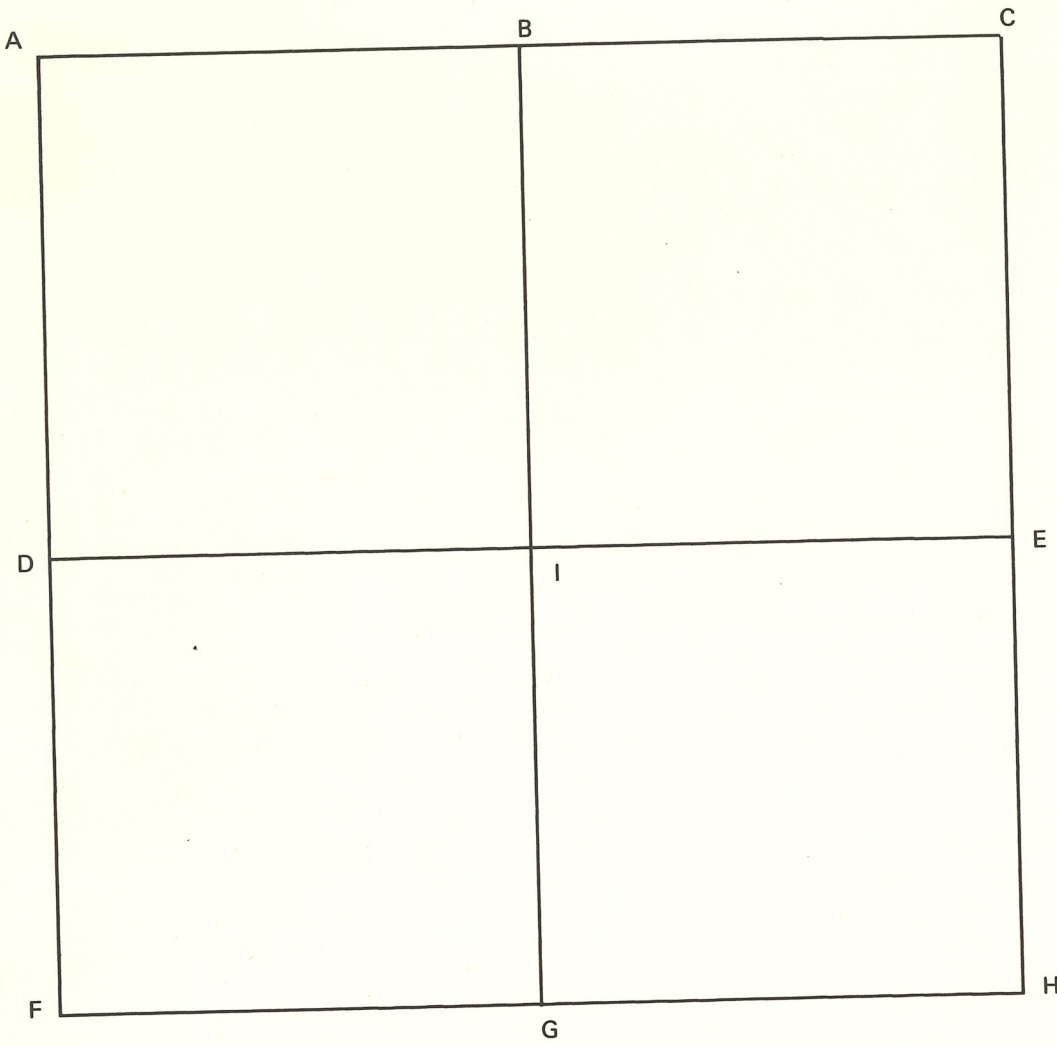
CORNER CODE SYSTEM
Warrick County



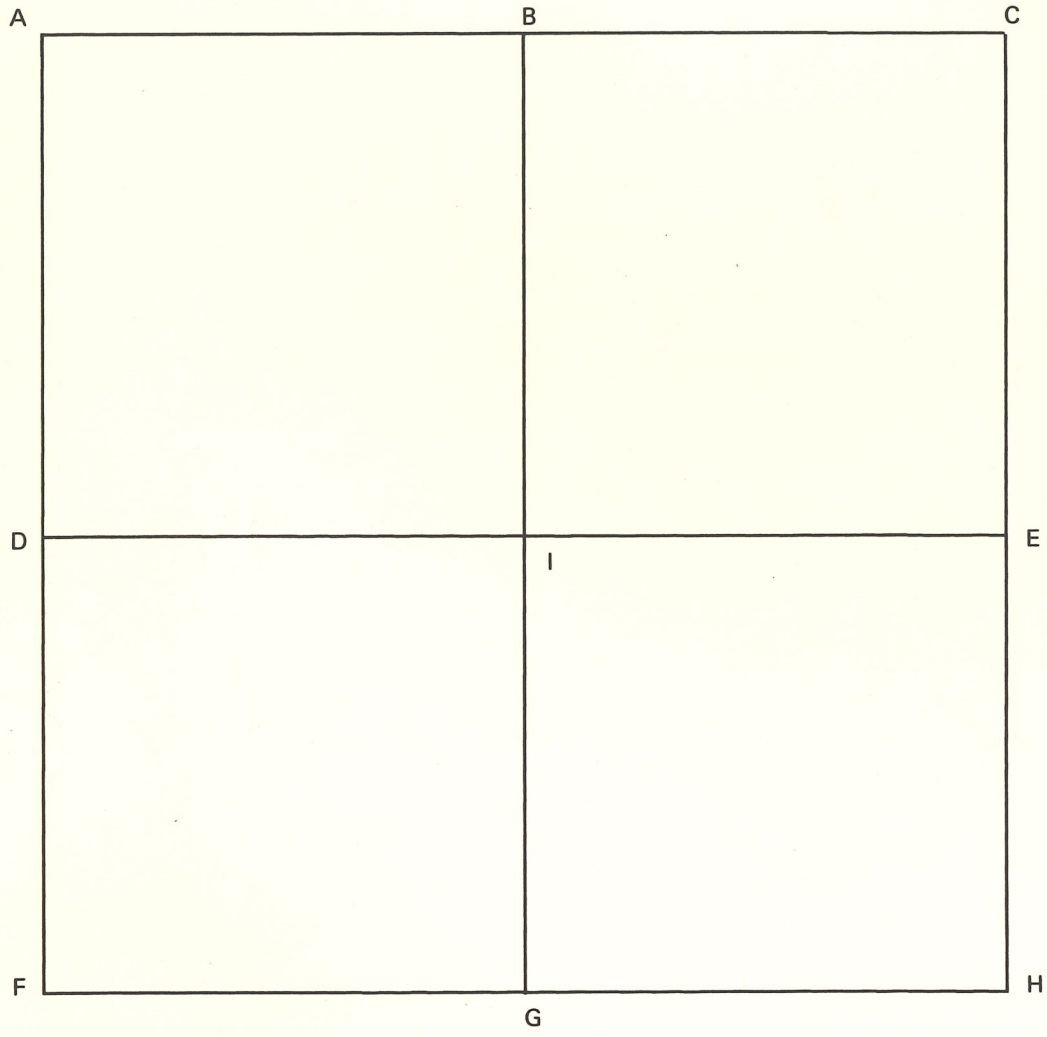
NOTES

CORNER CODE SYSTEM
Warrick County

NOTES

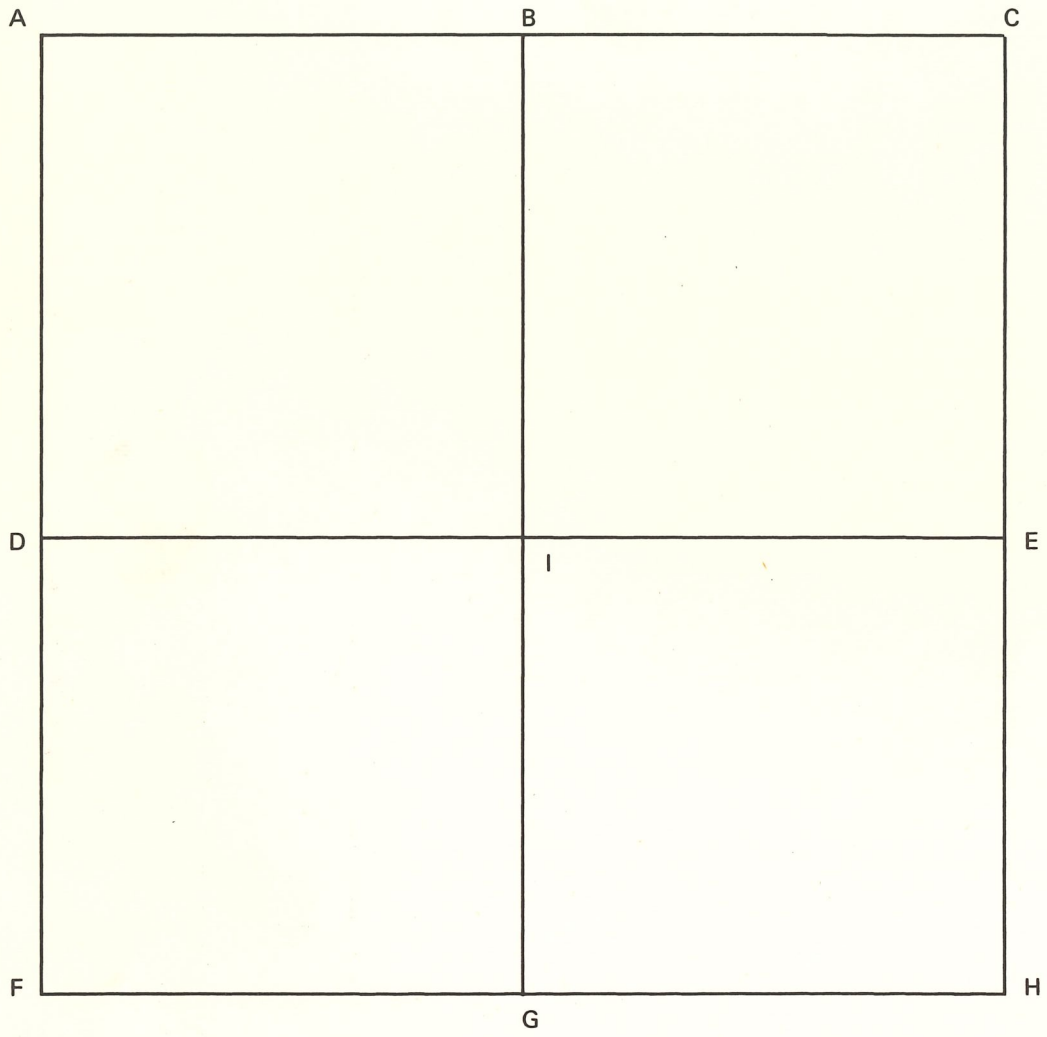


CORNER CODE SYSTEM
Warrick County



NOTES

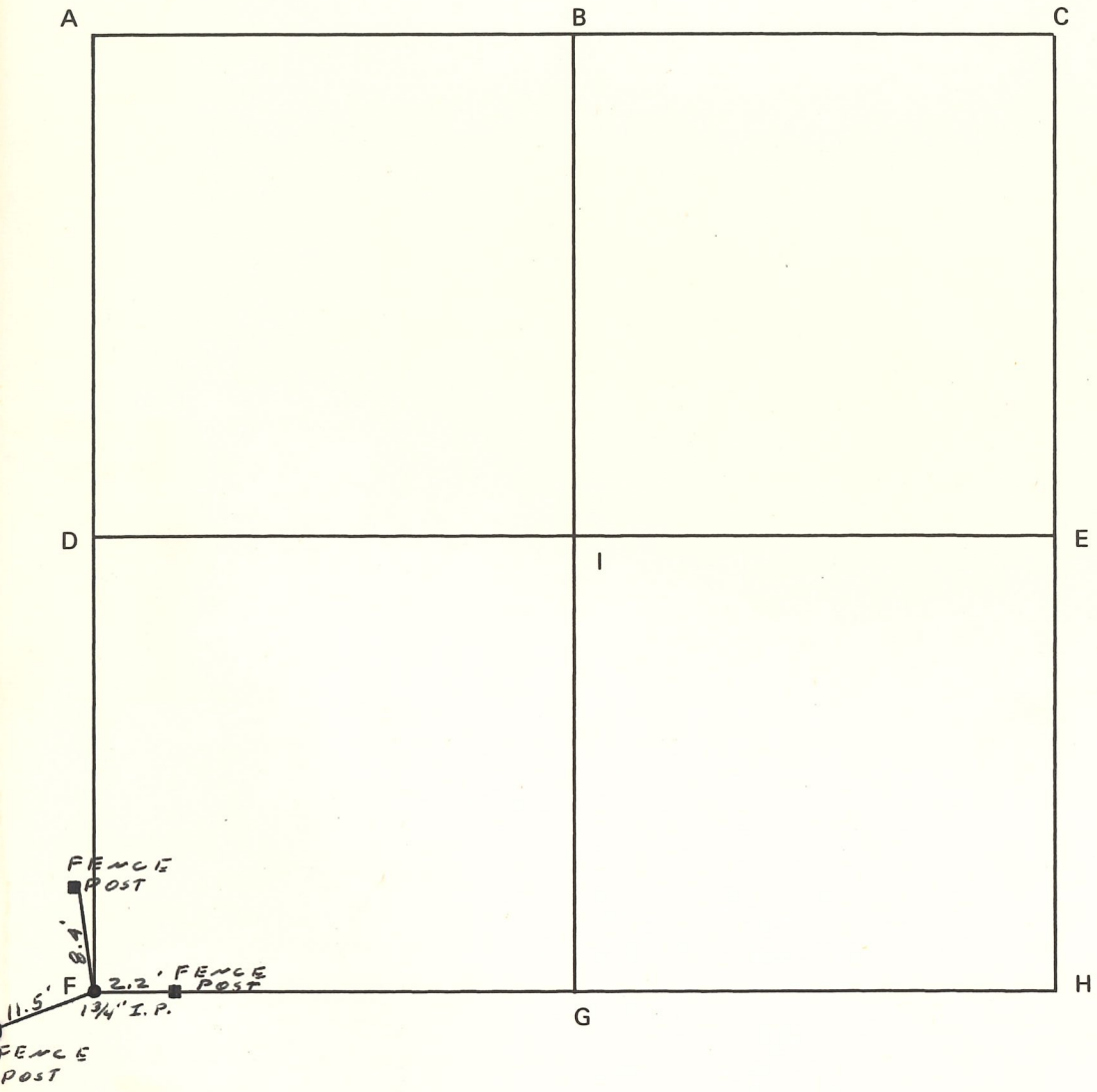
CORNER CODE SYSTEM
Warrick County



NOTES

CORNER CODE SYSTEM
Warrick County

NOTES



CORNER RECORD
WARRICK COUNTY



DESCRIPTION:

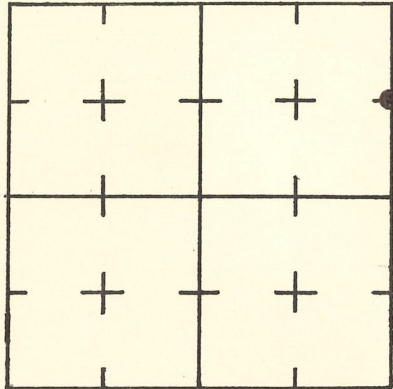
SE CORNER NE 1/4 NE 1/4

SECTION 33, T. 4 S. R. 8 W.

2nd PRINCIPAL MERIDIAN

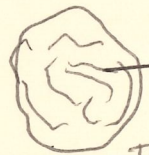
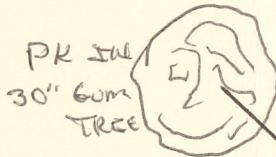
WARRICK COUNTY SURVEYOR
MICHAEL F. FELDBUSCH, L.S.

INDICATE CORNER REFERENCED



DESCRIBE CORNER REFERENCED

NOT VERIFIED



53.75

39.63

Hwy 61

RR Spike

66.18

PK END
PwP

STATE PLANE COORDINATE DATA

INDIANA ZONE: WEST

X _____

Y _____

ESTABLISHED BY:

APPROVED BY

DATE

REFERENCED BY:

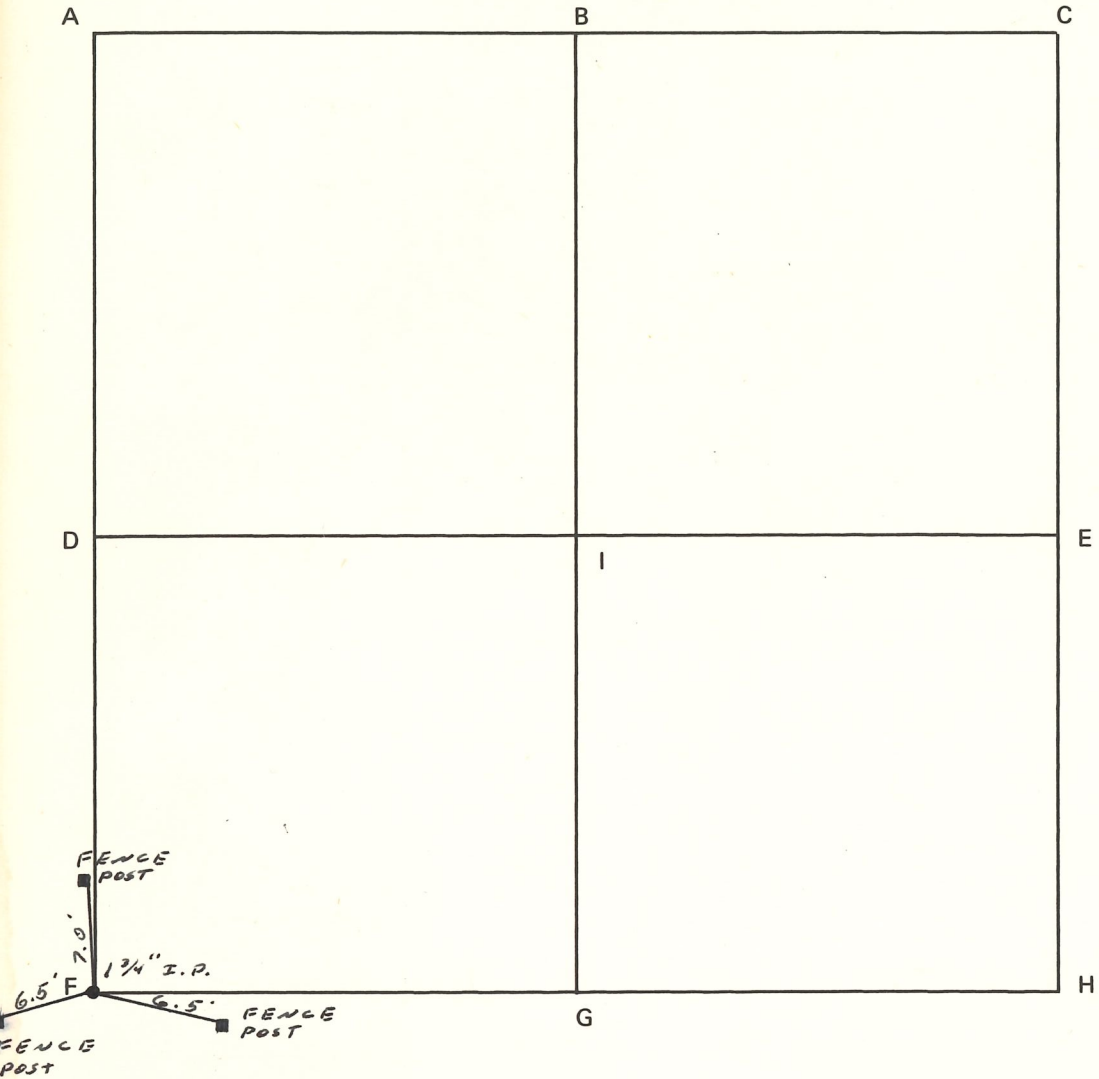
DATE

Henry Beck

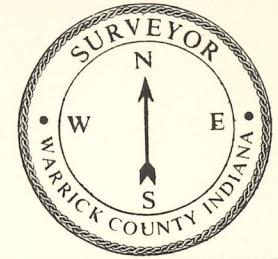
3/15/84

CORNER CODE SYSTEM
Warrick County

NOTES



CORNER RECORD
WARRICK COUNTY



DESCRIPTION: CENTER OF SECTION

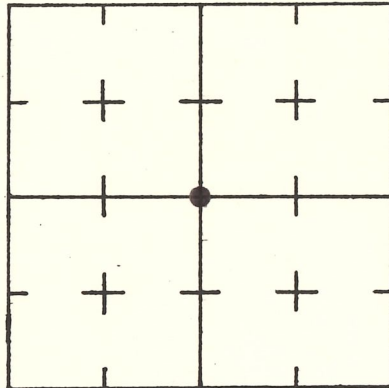
_____ CORNER _____

SECTION 34, T. 4 S. R. 8 W.

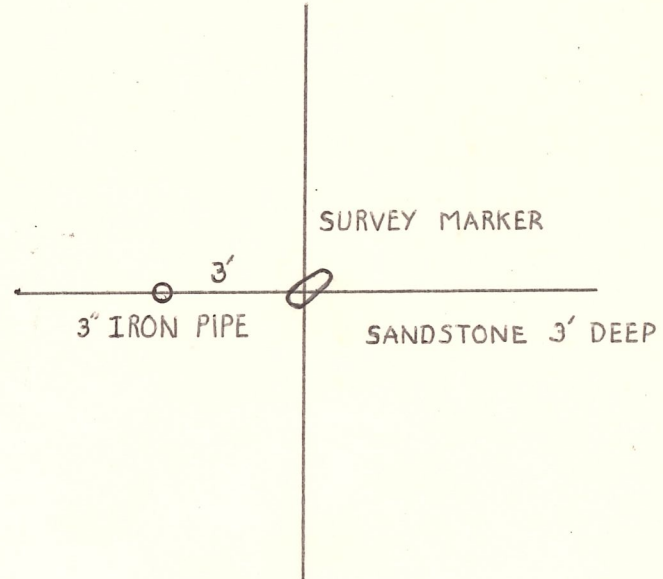
2nd PRINCIPLE MERIDIAN

WARRICK COUNTY SURVEYOR
MICHAEL IRVIN

INDICATE CORNER REFERENCED



DESCRIBE CORNER REFERENCED



STATE PLANE COORDINATE DATA

INDIANA ZONE: WEST

X _____

Y _____

ESTABLISHED BY:

APPROVED BY

DATE

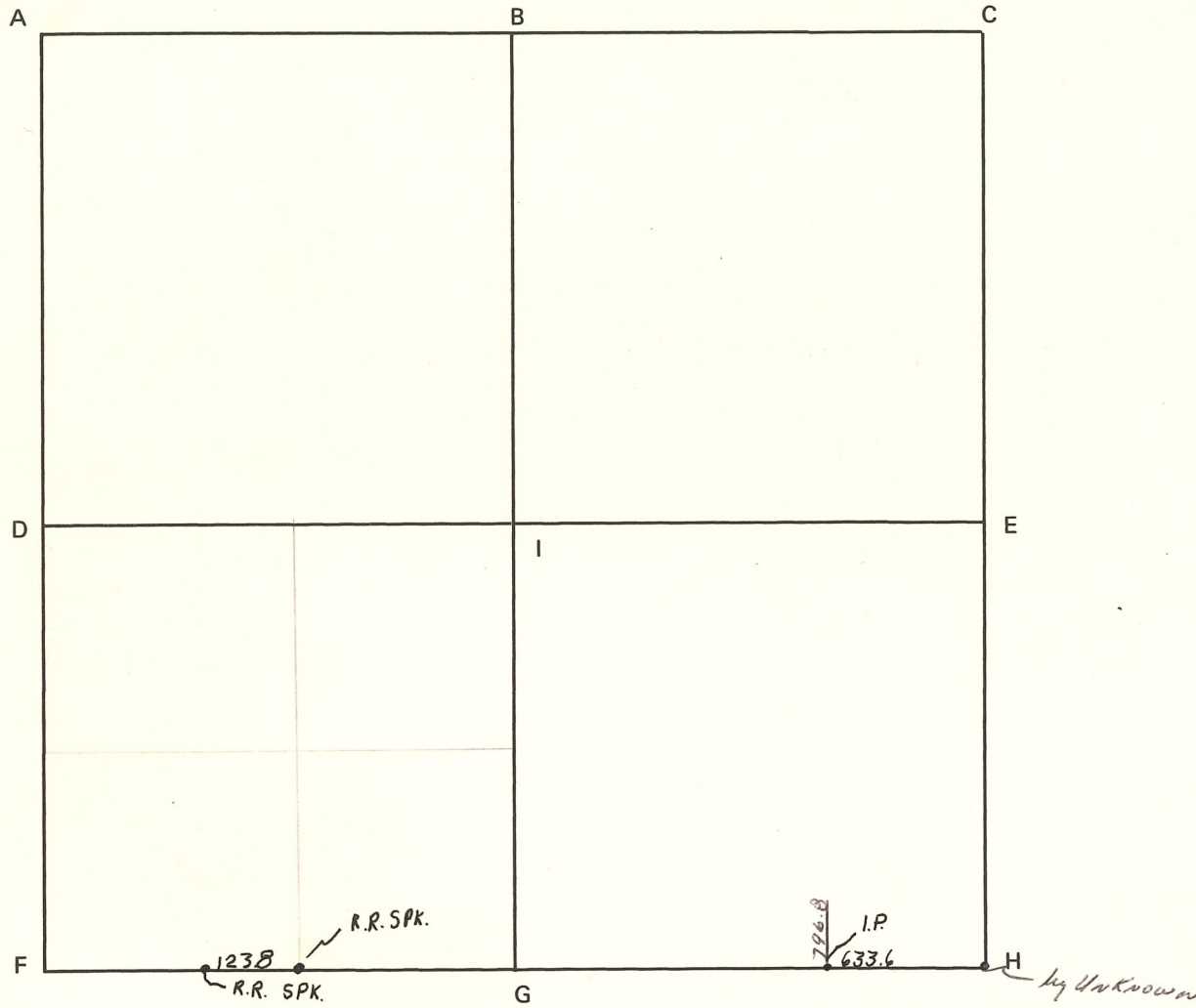
REFERENCED BY:

G.B., G.S.

DATE

4-2-85

CORNER CODE SYSTEM
Warrick County



NOTES

Clarence +Ella Bruner

PB 3 PG 82

Mr. Gilbert Buzzingham
Pt. E $\frac{1}{2}$ SW $\frac{1}{4}$

PB 4 PG 214

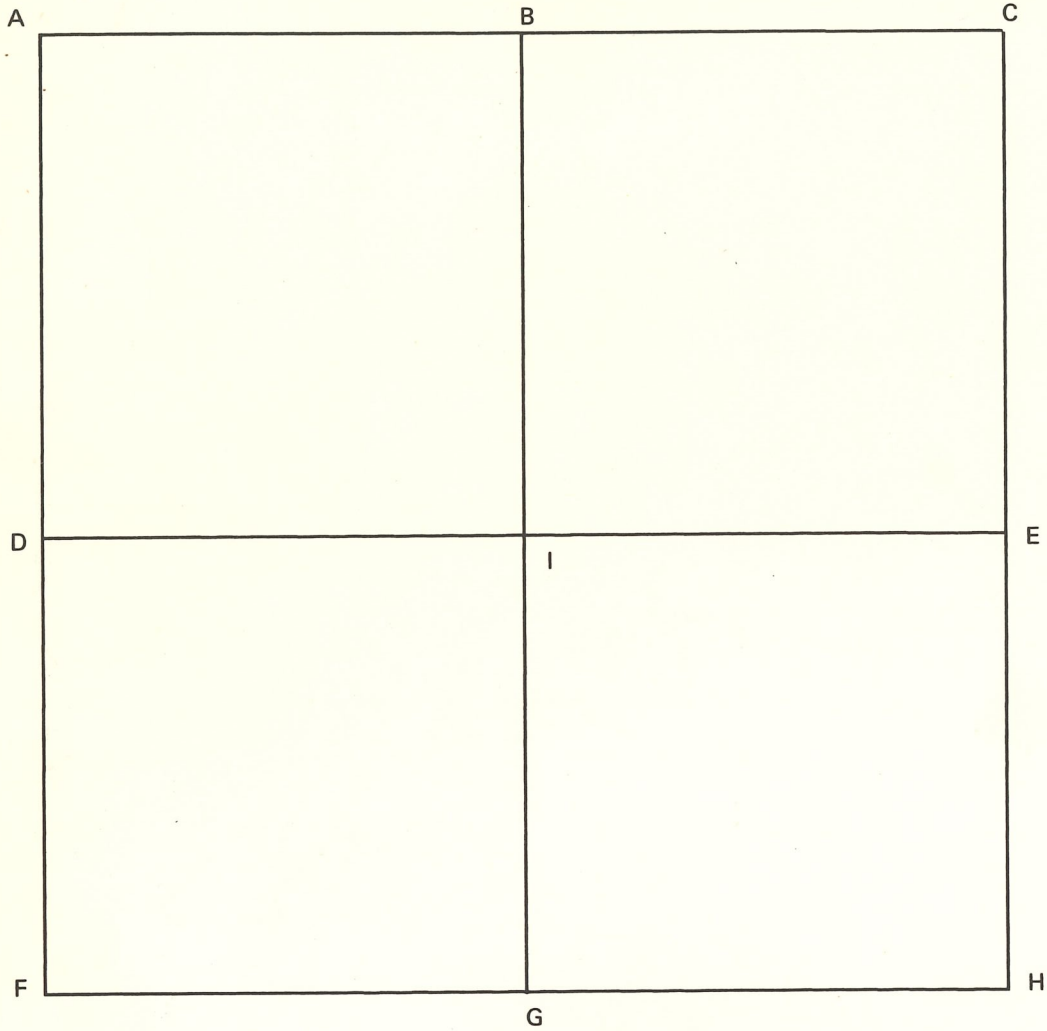
RECORD OF SECTION CORNERS

Warrick County

tion 34 Township 4 South Range 8 West 2nd Principle Meridian _____

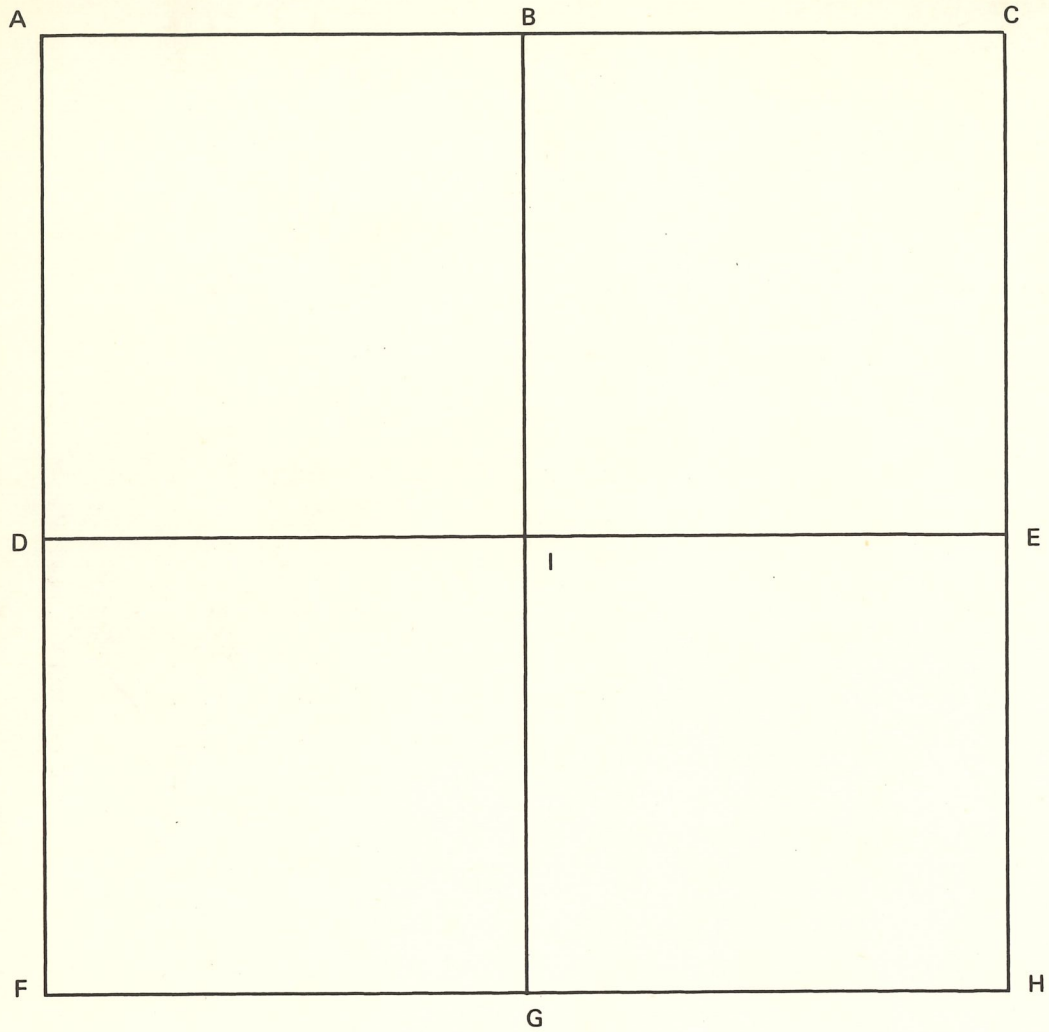
Date	Cor	Location	Description of		Distance from Corner	Bearing from Corner (North Assumed)	Cond	Check By	Remarks
			Monument	Reference					
8/8/52		SE cor. SW-SW	R.R. spike						George Reynolds
		SE cor. section 34							

CORNER CODE SYSTEM
Warrick County



NOTES

CORNER CODE SYSTEM
Warrick County



NOTES